

# Liberty Elementary School

Till\_sch11A

Tillamook SD 9

Building Type		County	
School		Tillamook	
Street			
1700 9th St			
City	State	Zip	
Tillamook	OR	97141	
Latitude		Longitude	
45.45199		123.84673	
Tracking Code		Inspection Date	
SER & RVS2006		9/11/2006	



Seismicity Zone: Very High

## FEMA 154 Rapid Visual Screening Score Card

	Type	Basic Score	Vert Irreg	Plan Irreg	Pre-Code	Post-Bench	Soil C	Soil D	Soil E	RVS Score
Primary	W2	3.8	-2	-0.5	0	0	0	-0.8	0	0.5
Secondary		0	0	0	0	0	0	0	0	0
Tertiary		0	0	0	0	0	0	0	0	0

Liberty Elementary School

## Final RVS Score

Final Type

Final Score

W2

0.5

FEMA-154 Collapse Potential

High (>10%)



OregonGeology

Rapid Visual Screening - Senate Bill #2 - Seismic Needs Assessment  
Oregon Department of Geology and Mineral Industries

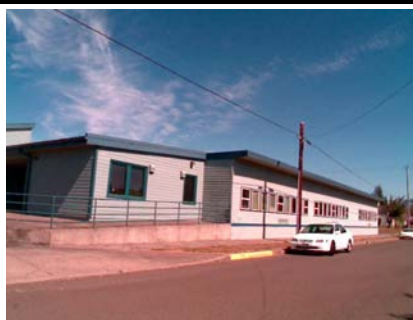
Enrollment	Year Built (Field Verified)	Year Built (Alt. Source)	Est. Decade Built
201		1961	1960
Total Area (square ft)	Number of Stories	Basement	Pounding Potential
26500	1	No	Yes

Plan Irregularities	Vertical Irregularities
Reentrant Corners: Other	Steps in Elevation View: 2 to 3 Changes
Reentrant Corners: Other (Adjacent Build/Entity)	Steps in Elevation View: 2 to 3 Changes (Adjacent Building/Entity)
None	None

Falling Hazards	Poor Conditions
None	None
None	None
None	None



SW Plan Irregularity Primary



SW Elevation View


SE Primary Structural Type  
STUCCO END WALL


N Vertical Irregularity Primary



NW Vertical Irregularity Secondary

# Liberty Elementary School

Tillamook SD 9

Till\_sch11B

Building Type		County	
School		Tillamook	
Street			
1700 9th St			
City	State	Zip	
Tillamook	OR	97141	
Latitude		Longitude	
45.45226		123.84641	
Tracking Code		Inspection Date	
SER & RVS2006		9/11/2006	



Seismicity Zone: Very High

## FEMA 154 Rapid Visual Screening Score Card

	Type	Basic Score	Vert Irreg	Plan Irreg	Pre-Code	Post-Bench	Soil C	Soil D	Soil E	RVS Score
Primary	W2	3.8	0	-0.5	0	2.4	0	-0.8	0	4.9
Secondary		0	0	0	0	0	0	0	0	0
Tertiary		0	0	0	0	0	0	0	0	0

Liberty Elementary School

## Final RVS Score

Final Type

Final Score

W2

4.9

FEMA-154 Collapse Potential

Low (<1%)



OregonGeology

Rapid Visual Screening - Senate Bill #2 - Seismic Needs Assessment  
Oregon Department of Geology and Mineral Industries



Enrollment	Year Built (Field Verified)	Year Built (Alt. Source)	Est. Decade Built
201		1961	1980
Total Area (square ft)	Number of Stories	Basement	Pounding Potential
26500	1	No	Yes

Plan Irregularities	Vertical Irregularities
Reentrant Corners: Other	Steps in Elevation View: Single Change
Reentrant Corners: Other (Adjacent Build/Entity)	Steps in Elevation View: Single Change (Adjacent Building/Entity)
None	None

Falling Hazards	Poor Conditions
None	None
None	None
None	None



NW Plan Irregularity Primary



NW Vertical Irregularity Secondary

# Liberty Elementary School

Till\_sch11C

Tillamook SD 9

Building Type		County	
School		Tillamook	
Street			
1700 9th St			
City	State	Zip	
Tillamook	OR	97141	
Latitude		Longitude	
45.45256		123.84687	
Tracking Code		Inspection Date	
SER & RVS2006		9/11/2006	



Seismicity Zone: Very High

## FEMA 154 Rapid Visual Screening Score Card

	Type	Basic Score	Vert Irreg	Plan Irreg	Pre-Code	Post-Bench	Soil C	Soil D	Soil E	RVS Score
Primary	W2	3.8	-2	0	-1	0	0	-0.8	0	0
Secondary		0	0	0	0	0	0	0	0	0
Tertiary		0	0	0	0	0	0	0	0	0

Liberty Elementary School

## Final RVS Score

Final Type

Final Score

W2

0

FEMA-154 Collapse Potential

Very High (100%)



OregonGeology

Rapid Visual Screening - Senate Bill #2 - Seismic Needs Assessment  
Oregon Department of Geology and Mineral Industries

Enrollment	Year Built (Field Verified)	Year Built (Alt. Source)	Est. Decade Built
201		1961	1920
Total Area (square ft)	Number of Stories	Basement	Pounding Potential
26500	1	No	Yes

Plan Irregularities	Vertical Irregularities
Reentrant Corners: Other	Steps in Elevation View: 2 to 3 Changes
Reentrant Corners: Other (Adjacent Build/Entity)	None
None	None

Falling Hazards	Poor Conditions
Other: Ornamental Hazard Over Exit	None
None	None
None	None



SE Vertical Irregularity Primary



NW Plan Irregularity Primary



SW Plan Irregularity Secondary