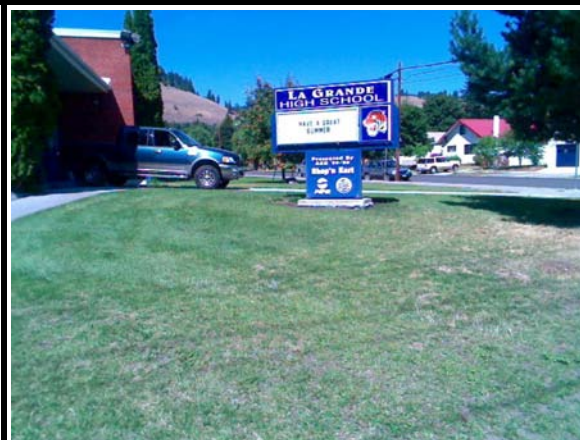


La Grande High School

La Grande SD 1

Unio_sch03A

Building Type		County	
School		Union	
Street			
708 K Ave			
City	State	Zip	
La Grande	OR	97850	
Latitude		Longitude	
45.32086		118.10042	
Tracking Code		Inspection Date	
RVS in 2006		8/3/2006	



Seismicity Zone: Moderate

FEMA 154 Rapid Visual Screening Score Card

	Type	Basic Score	Vert Irreg	Plan Irreg	Pre-Code	Post-Bench	Soil C	Soil D	Soil E	RVS Score
Primary	C2	3.6	-2	-0.5	0	0	0	-1.2	0	-0.1
Secondary	RM1	3.6	-2	-0.5	0	0	0	-1.2	0	-0.1
Tertiary		0	0	0	0	0	0	0	0	0

La Grande High School

Final RVS Score

Final Type

Final Score

C2

-0.1

FEMA-154 Collapse Potential

Very High (100%)



OregonGeology

Rapid Visual Screening - Senate Bill #2 - Seismic Needs Assessment
Oregon Department of Geology and Mineral Industries

Enrollment	Year Built (Field Verified)	Year Built (Alt. Source)	Est. Decade Built
761		1951	1950
Total Area (square ft)	Number of Stories	Basement	Pounding Potential
162327	1	No	No

Plan Irregularities	Vertical Irregularities
Reentrant Corners: Other	Steps in Elevation View: 2 to 3 Changes (Adjacent Building/Entity)
Reentrant Corners: Other	Steps in Elevation View: 2 to 3 Changes
None	None

Falling Hazards	Poor Conditions
None	None
None	None
None	None



E Elevation View



S Elevation View



S Vertical Irregularity Primary



W Elevation View

La Grande High School

La Grande SD 1

Unio_sch03B

Building Type		County	
School		Union	
Street			
708 K Ave			
City	State	Zip	
La Grande	OR	97850	
Latitude		Longitude	
45.32012		118.10016	
Tracking Code		Inspection Date	
RVS in 2006		8/3/2006	



Seismicity Zone: Moderate

FEMA 154 Rapid Visual Screening Score Card

	Type	Basic Score	Vert Irreg	Plan Irreg	Pre-Code	Post-Bench	Soil C	Soil D	Soil E	RVS Score
Primary	C2	3.6	-2	-0.5	0	0	0	-1.2	0	-0.1
Secondary	PC1	3.2	0	-0.5	0	0	0	-1	0	1.7
Tertiary	C1	3	-2	-0.5	0	0	0	-1	0	-0.5

La Grande High School

Final RVS Score

Final Type

Final Score

C1

-0.5

FEMA-154 Collapse Potential

Very High (100%)



OregonGeology

Rapid Visual Screening - Senate Bill #2 - Seismic Needs Assessment
Oregon Department of Geology and Mineral Industries

Enrollment	Year Built (Field Verified)	Year Built (Alt. Source)	Est. Decade Built
761		1951	1970
Total Area (square ft)	Number of Stories	Basement	Pounding Potential
162327	1	No	No

Plan Irregularities	Vertical Irregularities
Reentrant Corners: L shaped (Adjacent Build/Entity)	Steps in Elevation View: Single Change
Reentrant Corners: Other	None
None	None

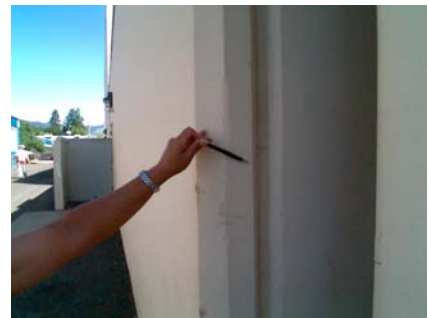
Falling Hazards	Poor Conditions
None	None
None	None
None	None



SW Elevation View



W Elevation View



W Secondary Structural Type



NE Elevation View

La Grande High School

La Grande SD 1

Unio_sch03C

Building Type		County	
School		Union	
Street			
708 K Ave			
City	State	Zip	
La Grande	OR	97850	
Latitude		Longitude	
45.32004		118.10088	
Tracking Code		Inspection Date	
RVS in 2006		8/3/2006	



Seismicity Zone: Moderate

FEMA 154 Rapid Visual Screening Score Card

	Type	Basic Score	Vert Irreg	Plan Irreg	Pre-Code	Post-Bench	Soil C	Soil D	Soil E	RVS Score
Primary	RM1	3.6	-2	-0.5	0	0	0	-1.2	0	-0.1
Secondary		0	0	0	0	0	0	0	0	0
Tertiary		0	0	0	0	0	0	0	0	0

La Grande High School

Final RVS Score

Final Type

Final Score

RM1

-0.1

FEMA-154 Collapse Potential

Very High (100%)



OregonGeology

Rapid Visual Screening - Senate Bill #2 - Seismic Needs Assessment
Oregon Department of Geology and Mineral Industries

Enrollment	Year Built (Field Verified)	Year Built (Alt. Source)	Est. Decade Built
761		1951	1950
Total Area (square ft)	Number of Stories	Basement	Pounding Potential
162327	1	No	No

Plan Irregularities	Vertical Irregularities
Reentrant Corners: L Shaped	Steps in Elevation View: Single Change
None	None
None	None

Falling Hazards	Poor Conditions
None	None
None	None
None	None



E Elevation View

La Grande High School

La Grande SD 1

Unio_sch03D

Building Type		County	
School		Union	
Street			
708 K Ave			
City	State	Zip	
La Grande	OR	97850	
Latitude		Longitude	
45.3207		118.10155	
Tracking Code		Inspection Date	
RVS in 2006		8/3/2006	



Seismicity Zone: Moderate

FEMA 154 Rapid Visual Screening Score Card

	Type	Basic Score	Vert Irreg	Plan Irreg	Pre-Code	Post-Bench	Soil C	Soil D	Soil E	RVS Score
Primary	PC1	3.2	0	-0.5	0	0	0	-1	0	1.7
Secondary	S1	3.6	-2	-0.5	0	0	0	-1	0	0.1
Tertiary		0	0	0	0	0	0	0	0	0

La Grande High School

Final RVS Score

Final Type

Final Score

S1

0.1

FEMA-154 Collapse Potential

High (>10%)



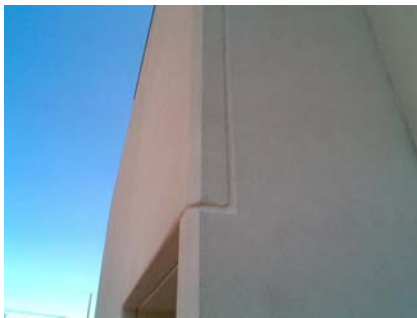
OregonGeology

Rapid Visual Screening - Senate Bill #2 - Seismic Needs Assessment
Oregon Department of Geology and Mineral Industries

Enrollment	Year Built (Field Verified)	Year Built (Alt. Source)	Est. Decade Built
761		1951	1970
Total Area (square ft)	Number of Stories	Basement	Pounding Potential
162327	2	No	No

Plan Irregularities	Vertical Irregularities
Reentrant Corners: Other	Steps in Elevation View: Very Irregular Changes
None	None
None	None

Falling Hazards	Poor Conditions
None	None
None	None
None	None



S Primary Structural Type



N Elevation View

W Other
steel not necessarily braced though

La Grande High School

La Grande SD 1

Unio_sch03E

Building Type		County	
School		Union	
Street			
708 K Ave			
City	State	Zip	
La Grande	OR	97850	
Latitude		Longitude	
45.31999		118.10158	
Tracking Code		Inspection Date	
RVS in 2006		8/3/2006	



Seismicity Zone: Moderate

FEMA 154 Rapid Visual Screening Score Card

	Type	Basic Score	Vert Irreg	Plan Irreg	Pre-Code	Post-Bench	Soil C	Soil D	Soil E	RVS Score
Primary	S3	3.8	0	0	0	0	0	-1	0	2.8
Secondary	RM1	3.6	0	0	0	0	0	-1.2	0	2.4
Tertiary		0	0	0	0	0	0	0	0	0

La Grande High School

Final RVS Score

Final Type

Final Score

RM1

2.4

FEMA-154 Collapse Potential

Low (<1%)



OregonGeology

Rapid Visual Screening - Senate Bill #2 - Seismic Needs Assessment
Oregon Department of Geology and Mineral Industries

Enrollment	Year Built (Field Verified)	Year Built (Alt. Source)	Est. Decade Built
761		1951	1990
Total Area (square ft)	Number of Stories	Basement	Pounding Potential
162327	1	No	No

Plan Irregularities	Vertical Irregularities
None	None
None	None
None	None

Falling Hazards	Poor Conditions
None	None
None	None
None	None



S Other



SW Elevation View

