

The Dalles-Wahtonka High School (The Dalles Camp

Wasc_sch05A

North Wasco County SD 21

Building Type	County	
School	Wasco	
Street		
220 E 10th St		
City	State	Zip
The Dalles	OR	97058
Latitude		Longitude
45.59564		121.18794
Tracking Code		Inspection Date
RVS in 2006		8/23/2006



Seismicity Zone: Moderate

FEMA 154 Rapid Visual Screening Score Card

	Type	Basic Score	Vert Irreg	Plan Irreg	Pre-Code	Post-Bench	Soil C	Soil D	Soil E	RVS Score
Primary	C2	3.6	-2	-0.5	-0.4	0	0	0	0	0.7
Secondary		0	0	0	0	0	0	0	0	0
Tertiary		0	0	0	0	0	0	0	0	0

The Dalles-Wahtonka High School
(The Dalles Campus)

Final RVS Score

Final Type

Final Score

C2

0.7

FEMA-154 Collapse Potential

High (>10%)



OregonGeology

Rapid Visual Screening - Senate Bill #2 - Seismic Needs Assessment
Oregon Department of Geology and Mineral Industries

The Dalles-Wahtonka High School (The Dalles Campus)

Wasc_sch05A

Enrollment	Year Built (Field Verified)	Year Built (Alt. Source)	Est. Decade Built
966		1940	1940
Total Area (square ft)	Number of Stories	Basement	Pounding Potential
	2	No	Yes

Plan Irregularities	Vertical Irregularities
Out of Plane Lateral-Force-Resistance Elements	Steps in Elevation View: 2 to 3 Changes
Reentrant Corners: Other (Adjacent Build/Entity)	Building On Hill or Sloped Site
None	Steps in Elevation View: Single Change (Adjacent Building/Entity)

Falling Hazards	Poor Conditions
None	None
None	None
None	None



N
a and d Pounding Potential



NE Vertical Irregularity Secondary



SE Elevation View



E Elevation View



OregonGeology

Rapid Visual Screening - Senate Bill #2 - Seismic Needs Assessment
Oregon Department of Geology and Mineral Industries

The Dalles-Wahtonka High School (The Dalles Camp

Wasc_sch05B

North Wasco County SD 21

Building Type	County	
School	Wasco	
Street		
220 E 10th St		
City	State	Zip
The Dalles	OR	97058
Latitude	Longitude	
45.59624	121.18774	
Tracking Code	Inspection Date	
RVS in 2006	8/23/2006	



Seismicity Zone: Moderate

FEMA 154 Rapid Visual Screening Score Card

	Type	Basic Score	Vert Irreg	Plan Irreg	Pre-Code	Post-Bench	Soil C	Soil D	Soil E	RVS Score
Primary	C2	3.6	-2	-0.5	-0.4	0	0	0	0	0.7
Secondary		0	0	0	0	0	0	0	0	0
Tertiary		0	0	0	0	0	0	0	0	0

The Dalles-Wahtonka High School
(The Dalles Campus)

Final RVS Score

Final Type

Final Score

C2

0.7

FEMA-154 Collapse Potential

High (>10%)



OregonGeology

Rapid Visual Screening - Senate Bill #2 - Seismic Needs Assessment
Oregon Department of Geology and Mineral Industries

The Dalles-Wahtonka High School (The Dalles Campus)

Wasc_sch05B

Enrollment	Year Built (Field Verified)	Year Built (Alt. Source)	Est. Decade Built
966	1940	1940	1940
Total Area (square ft)	Number of Stories	Basement	Pounding Potential
	2	Yes	Yes

Plan Irregularities	Vertical Irregularities
Reentrant Corners: Other	Steps in Elevation View: Very Irregular Changes
Reentrant Corners: Other (Adjacent Build/Entity)	Building On Hill or Sloped Site
None	Steps in Elevation View: Single Change (Adjacent Building/Entity)

Falling Hazards	Poor Conditions
Other: Smokestack	None
None	None
None	None



N Primary Structural Type
form marks



E Elevation View



N Other



NE Building Name



N Vertical Irregularity Secondary



N Basement



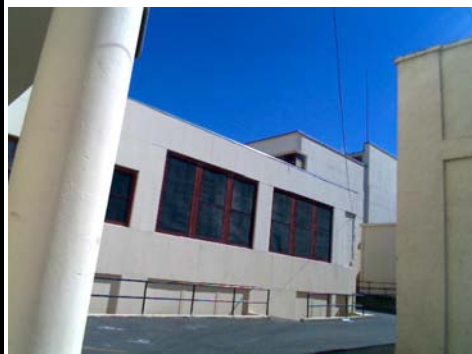
N Pounding Potential



SW Plan Irregularity Primary



W Falling Hazard



W Elevation View

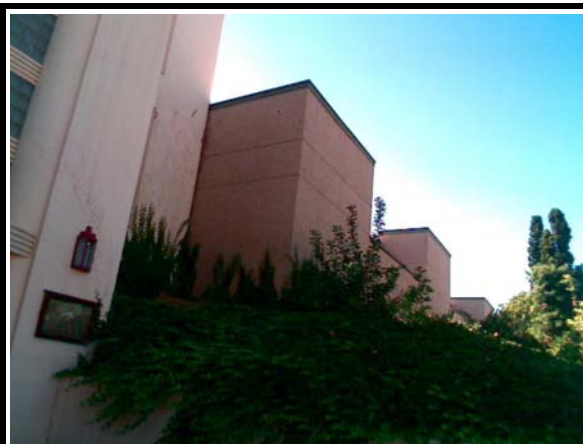


The Dalles-Wahtonka High School (The Dalles Camp

Wasc_sch05C

North Wasco County SD 21

Building Type	County	
School	Wasco	
Street		
220 E 10th St		
City	State	Zip
The Dalles	OR	97058
Latitude		Longitude
45.5967		121.18869
Tracking Code		Inspection Date
RVS in 2006		8/23/2006



Seismicity Zone: Moderate

FEMA 154 Rapid Visual Screening Score Card

	Type	Basic Score	Vert Irreg	Plan Irreg	Pre-Code	Post-Bench	Soil C	Soil D	Soil E	RVS Score
Primary	RM1	3.6	0	0	0	0	0	0	0	3.6
Secondary		0	0	0	0	0	0	0	0	0
Tertiary		0	0	0	0	0	0	0	0	0

The Dalles-Wahtonka High School
(The Dalles Campus)

Final RVS Score

Final Type

Final Score

RM1

3.6

FEMA-154 Collapse Potential

Low (<1%)



OregonGeology

Rapid Visual Screening - Senate Bill #2 - Seismic Needs Assessment
Oregon Department of Geology and Mineral Industries

Enrollment	Year Built (Field Verified)	Year Built (Alt. Source)	Est. Decade Built
966		1940	1970
Total Area (square ft)	Number of Stories	Basement	Pounding Potential
	1	No	Yes

Plan Irregularities	Vertical Irregularities
Reentrant Corners: Other	Steps in Elevation View: Very Irregular Changes
Reentrant Corners: Other (Adjacent Build/Entity)	Steps in Elevation View: Single Change (Adjacent Building/Entity)
None	Building On Hill or Sloped Site

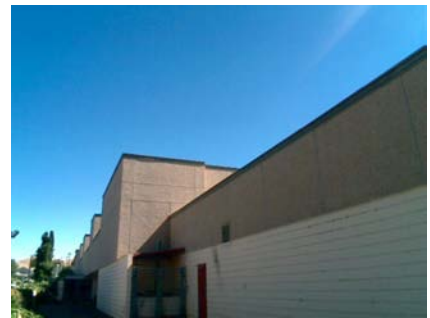
Falling Hazards	Poor Conditions
Other: Light Cladding	None
None	None
None	None



NW Primary Structural Type



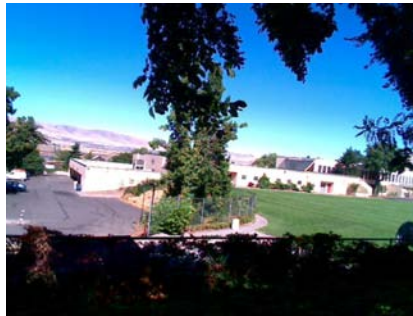
NW Primary Structural Type



NW Vertical Irregularity Primary



SW Plan Irregularity Primary



SW Vertical Irregularity Tertiary

S General Site
conn to b

The Dalles-Wahtonka High School (The Dalles Camp

Wasc_sch05D

North Wasco County SD 21

Building Type	County	
School	Wasco	
Street		
220 E 10th St		
City	State	Zip
The Dalles	OR	97058
Latitude	Longitude	
45.5958	121.18833	
Tracking Code	Inspection Date	
RVS in 2006	8/23/2006	



Seismicity Zone: Moderate

FEMA 154 Rapid Visual Screening Score Card

	Type	Basic Score	Vert Irreg	Plan Irreg	Pre-Code	Post-Bench	Soil C	Soil D	Soil E	RVS Score
Primary	RM1	3.6	-2	-0.5	0	0	0	0	0	1.1
Secondary	C1	3	-2	-0.5	0	0	0	0	0	0.5
Tertiary	C3	3.2	-2	-0.5	0	0	0	0	0	0.7

The Dalles-Wahtonka High School
(The Dalles Campus)

Final RVS Score

Final Type

Final Score

C1

0.5

FEMA-154 Collapse Potential

High (>10%)



OregonGeology

Rapid Visual Screening - Senate Bill #2 - Seismic Needs Assessment
Oregon Department of Geology and Mineral Industries

The Dalles-Wahtonka High School (The Dalles Campus)

Wasc_sch05D

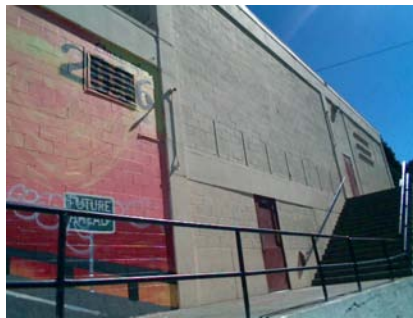
Enrollment	Year Built (Field Verified)	Year Built (Alt. Source)	Est. Decade Built
966		1940	1950
Total Area (square ft)	Number of Stories	Basement	Pounding Potential
	1	No	Yes

Plan Irregularities	Vertical Irregularities
Reentrant Corners: Other (Adjacent Build/Entity)	Steps in Elevation View: Single Change (Adjacent Building/Entity)
None	Building On Hill or Sloped Site
None	Steps in Elevation View: Single Change

Falling Hazards	Poor Conditions
None	None
None	None
None	None



NW Primary Structural Type



W Primary Structural Type



N Elevation View

The Dalles-Wahtonka High School (The Dalles Camp

Wasc_sch05E

North Wasco County SD 21

Building Type	County	
School	Wasco	
Street		
220 E 10th St		
City	State	Zip
The Dalles	OR	97058
Latitude		Longitude
45.5961		121.18817
Tracking Code		Inspection Date
RVS in 2006		8/23/2006



Seismicity Zone: Moderate

FEMA 154 Rapid Visual Screening Score Card

	Type	Basic Score	Vert Irreg	Plan Irreg	Pre-Code	Post-Bench	Soil C	Soil D	Soil E	RVS Score
Primary	RM1	3.6	0	0	0	0	0	0	0	3.6
Secondary	C1	3	0	0	0	0	0	0	0	3
Tertiary	C3	3.2	0	0	0	0	0	0	0	3.2

The Dalles-Wahtonka High School
(The Dalles Campus)

Final RVS Score

Final Type

Final Score

C1

3

FEMA-154 Collapse Potential

Low (<1%)



OregonGeology

Rapid Visual Screening - Senate Bill #2 - Seismic Needs Assessment
Oregon Department of Geology and Mineral Industries

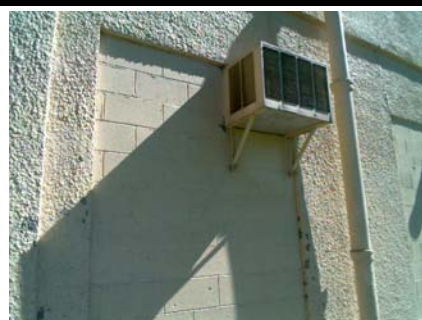
The Dalles-Wahtonka High School (The Dalles Campus)

Wasc_sch05E

Enrollment	Year Built (Field Verified)	Year Built (Alt. Source)	Est. Decade Built
966		1940	1950
Total Area (square ft)	Number of Stories	Basement	Pounding Potential
	1	No	No

Plan Irregularities	Vertical Irregularities
None	None
None	None
None	None

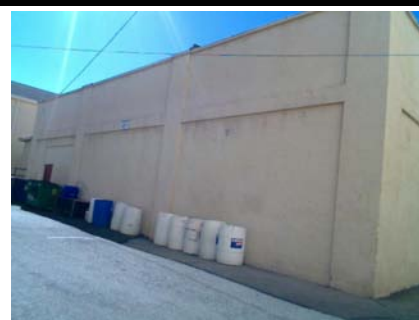
Falling Hazards	Poor Conditions
None	None
None	None
None	None



W Primary Structural Type



SW Elevation View



E Elevation View