

# Maupin Elementary School

South Wasco County SD 1

Wasc\_sch10A

Building Type		County	
School		Wasco	
Street			
308 Deschutes Ave			
City	State	Zip	
Maupin	OR	97037	
Latitude		Longitude	
45.17665		121.07871	
Tracking Code		Inspection Date	
RVS in 2006		8/25/2006	



Seismicity Zone: Moderate

## FEMA 154 Rapid Visual Screening Score Card

	Type	Basic Score	Vert Irreg	Plan Irreg	Pre-Code	Post-Bench	Soil C	Soil D	Soil E	RVS Score
Primary	C2	3.6	-2	-0.5	-0.4	0	0	0	0	0.7
Secondary		0	0	0	0	0	0	0	0	0
Tertiary		0	0	0	0	0	0	0	0	0

Maupin Elementary School

## Final RVS Score

Final Type

Final Score

C2

0.7

FEMA-154 Collapse Potential

High (>10%)



OregonGeology

Rapid Visual Screening - Senate Bill #2 - Seismic Needs Assessment  
Oregon Department of Geology and Mineral Industries

Enrollment	Year Built (Field Verified)	Year Built (Alt. Source)	Est. Decade Built
123		1930	1930
Total Area (square ft)	Number of Stories	Basement	Pounding Potential
31691	2	No	Yes

Plan Irregularities	Vertical Irregularities
Reentrant Corners: Other	Steps in Elevation View: Single Change
Reentrant Corners: Other (Adjacent Build/Entity)	Steps in Elevation View: 2 to 3 Changes (Adjacent Building/Entity)
None	None

Falling Hazards	Poor Conditions
Unreinforced Chimneys	None
None	None
None	None



W Falling Hazard



E Vertical Irregularity Primary



S Elevation View


S General Site  
conn to c

# Maupin Elementary School

South Wasco County SD 1

Wasc\_sch10B

Building Type		County	
School		Wasco	
Street			
308 Deschutes Ave			
City	State	Zip	
Maupin	OR	97037	
Latitude		Longitude	
45.17689		121.07885	
Tracking Code		Inspection Date	
RVS in 2006		8/25/2006	



Seismicity Zone: Moderate

## FEMA 154 Rapid Visual Screening Score Card

	Type	Basic Score	Vert Irreg	Plan Irreg	Pre-Code	Post-Bench	Soil C	Soil D	Soil E	RVS Score
Primary	C2	3.6	-2	-0.5	-0.4	0	0	0	0	0.7
Secondary		0	0	0	0	0	0	0	0	0
Tertiary		0	0	0	0	0	0	0	0	0

Maupin Elementary School

## Final RVS Score

Final Type

Final Score

C2

0.7

FEMA-154 Collapse Potential

High (>10%)



OregonGeology

Rapid Visual Screening - Senate Bill #2 - Seismic Needs Assessment  
Oregon Department of Geology and Mineral Industries



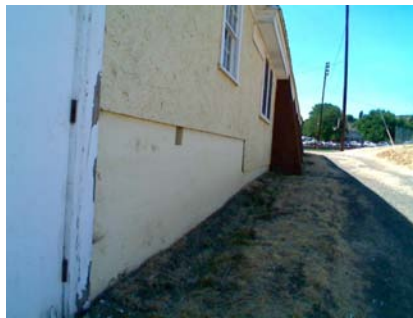
Enrollment	Year Built (Field Verified)	Year Built (Alt. Source)	Est. Decade Built
123		1930	1930
Total Area (square ft)	Number of Stories	Basement	Pounding Potential
31691	1	No	Yes

Plan Irregularities	Vertical Irregularities
Reentrant Corners: Other (Adjacent Build/Entity)	Steps in Elevation View: Single Change (Adjacent Building/Entity)
None	None
None	None

Falling Hazards	Poor Conditions
None	None
None	None
None	None



NW Elevation View


NE Primary Structural Type  
form marks


NE Elevation View


SE General Site  
conn to a

# Maupin Elementary School

South Wasco County SD 1

Wasc\_sch10C

Building Type		County	
School		Wasco	
Street			
308 Deschutes Ave			
City	State	Zip	
Maupin	OR	97037	
Latitude		Longitude	
45.17646		121.0789	
Tracking Code		Inspection Date	
RVS in 2006		8/25/2006	



Seismicity Zone: Moderate

## FEMA 154 Rapid Visual Screening Score Card

	Type	Basic Score	Vert Irreg	Plan Irreg	Pre-Code	Post-Bench	Soil C	Soil D	Soil E	RVS Score
Primary	RM1	3.6	-2	-0.5	0	0	0	0	0	1.1
Secondary		0	0	0	0	0	0	0	0	0
Tertiary		0	0	0	0	0	0	0	0	0

Maupin Elementary School

## Final RVS Score

Final Type

Final Score

RM1

1.1

FEMA-154 Collapse Potential

Moderate (>1%)



OregonGeology

Rapid Visual Screening - Senate Bill #2 - Seismic Needs Assessment  
Oregon Department of Geology and Mineral Industries

Enrollment	Year Built (Field Verified)	Year Built (Alt. Source)	Est. Decade Built
123		1930	1970
Total Area (square ft)	Number of Stories	Basement	Pounding Potential
31691	1	No	Yes

Plan Irregularities	Vertical Irregularities
Reentrant Corners: Other (Adjacent Build/Entity)	Steps in Elevation View: Single Change (Adjacent Building/Entity)
None	None
None	None

Falling Hazards	Poor Conditions
None	None
None	None
None	None



SE Elevation View



SW Elevation View

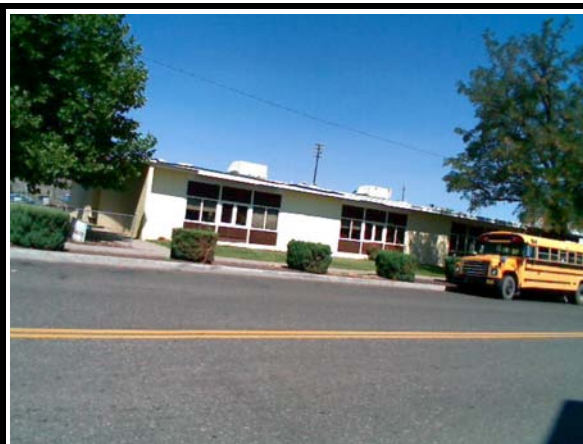


# Maupin Elementary School

South Wasco County SD 1

Wasc\_sch10D

Building Type		County	
School		Wasco	
Street			
308 Deschutes Ave			
City	State	Zip	
Maupin	OR	97037	
Latitude		Longitude	
45.17622		121.07931	
Tracking Code		Inspection Date	
RVS in 2006		8/25/2006	



Seismicity Zone: Moderate

## FEMA 154 Rapid Visual Screening Score Card

	Type	Basic Score	Vert Irreg	Plan Irreg	Pre-Code	Post-Bench	Soil C	Soil D	Soil E	RVS Score
Primary	RM1	3.6	0	0	0	0	0	0	0	3.6
Secondary		0	0	0	0	0	0	0	0	0
Tertiary		0	0	0	0	0	0	0	0	0

Maupin Elementary School

## Final RVS Score

Final Type

Final Score

RM1

3.6

FEMA-154 Collapse Potential

Low (<1%)



OregonGeology

Rapid Visual Screening - Senate Bill #2 - Seismic Needs Assessment  
Oregon Department of Geology and Mineral Industries

Enrollment	Year Built (Field Verified)	Year Built (Alt. Source)	Est. Decade Built
123		1930	1970
Total Area (square ft)	Number of Stories	Basement	Pounding Potential
31691	1	No	No

Plan Irregularities	Vertical Irregularities
Out of Plane Lateral-Force-Resistance Elements	None
None	None
None	None

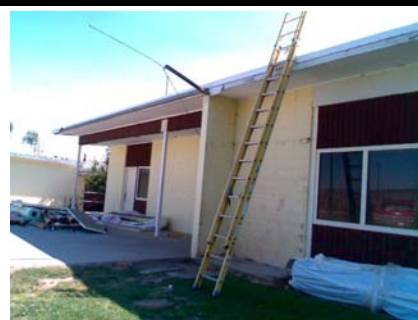
Falling Hazards	Poor Conditions
None	None
None	None
None	None



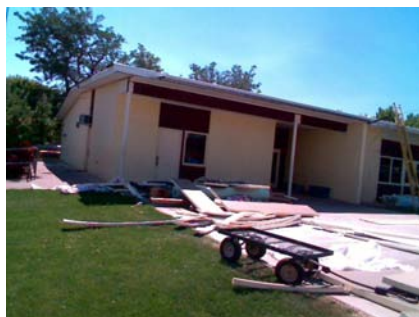
SW Primary Structural Type



NW Elevation View



NW Plan Irregularity Primary



NE Elevation View



SE Plan Irregularity Primary