

# Tuality Community Hospital - Forest Grove

Tuality Healthcare NFP

Wash\_hos03A

Building Type		County	
Hospital		Washington	
Street			
1809 Maple St			
City	State	Zip	
Forest Grove	OR	97116	
Latitude		Longitude	
45.51708		123.09043	
Tracking Code		Inspection Date	
New Building		7/12/2006	



Seismicity Zone: High

## FEMA 154 Rapid Visual Screening Score Card

	Type	Basic Score	Vert Irreg	Plan Irreg	Pre-Code	Post-Bench	Soil C	Soil D	Soil E	RVS Score
Primary	RM1	2.8	0	-0.5	0	0	-0.4	0	0	1.9
Secondary		0	0	0	0	0	0	0	0	0
Tertiary		0	0	0	0	0	0	0	0	0

Tuality Community Hospital - Forest Grove

## Final RVS Score

Final Type

Final Score

RM1

1.9

FEMA-154 Collapse Potential

Low (<1%)



OregonGeology

Rapid Visual Screening - Senate Bill #2 - Seismic Needs Assessment  
Oregon Department of Geology and Mineral Industries

# Tuality Community Hospital - Forest Grove

Wash\_hos03A

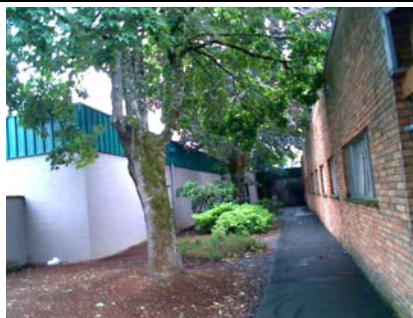
Enrollment	Year Built (Field Verified)	Year Built (Alt. Source)	Est. Decade Built
			1960
Total Area (square ft)	Number of Stories	Basement	Pounding Potential
	1	No	Yes

Plan Irregularities	Vertical Irregularities
Reentrant Corners: Other	Steps in Elevation View: 2 to 3 Changes
None	None
None	None

Falling Hazards	Poor Conditions
Other: Brick Veneer	None
Parapets: General	None
None	None



SW General Site



E Plan Irregularity Secondary  
Out patient on right side bldg A on right.



NE General Site



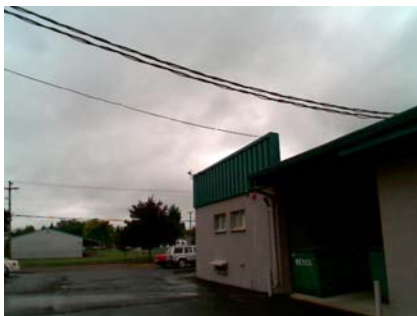
SE Primary Structural Type  
RM1



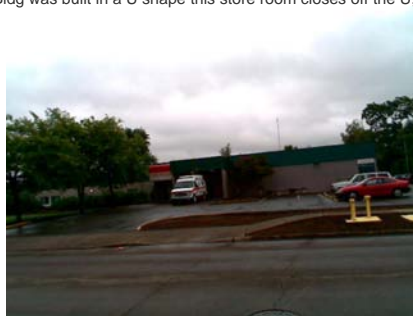
S Pounding Potential  
W2 store room not RVSeD on plan view. Storeroom is W1.  
Bldg was built in a U shape this store room closes off the U, see



E General Site  
Opening in side of building.



NE Falling Hazard  
parapets



NW General Site



NW General Site



W Falling Hazard

