

Neil Armstrong Middle School

Forest Grove SD 15

Wash_sch10A

Building Type		County	
School		Washington	
Street			
1777 Mt View Ln			
City	State	Zip	
Forest Grove	OR	97116	
Latitude		Longitude	
45.51604		123.07462	
Tracking Code		Inspection Date	
RVS in 2006		7/12/2006	



Seismicity Zone: High

FEMA 154 Rapid Visual Screening Score Card

	Type	Basic Score	Vert Irreg	Plan Irreg	Pre-Code	Post-Bench	Soil C	Soil D	Soil E	RVS Score
Primary	C2	2.8	-1	-0.5	0	0	-0.4	0	0	0.9
Secondary	PC1	2.6	0	-0.5	0	0	-0.4	0	0	1.7
Tertiary		0	0	0	0	0	0	0	0	0

Neil Armstrong Middle School

Final RVS Score

Final Type

Final Score

C2

0.9

FEMA-154 Collapse Potential

High (>10%)



OregonGeology

Rapid Visual Screening - Senate Bill #2 - Seismic Needs Assessment
Oregon Department of Geology and Mineral Industries

Enrollment	Year Built (Field Verified)	Year Built (Alt. Source)	Est. Decade Built
946	1970	1970	1970
Total Area (square ft)	Number of Stories	Basement	Pounding Potential
136410	1	No	Yes

Plan Irregularities	Vertical Irregularities
Reentrant Corners: H Shaped	Steps in Elevation View: Single Change
None	None
None	None

Falling Hazards	Poor Conditions
None	None
None	None
None	None



W General Site



W General Site



NE Primary Structural Type

N Field Verified Year Built
1970

Neil Armstrong Middle School

Forest Grove SD 15

Wash_sch10B

Building Type		County	
School		Washington	
Street			
1777 Mt View Ln			
City	State	Zip	
Forest Grove	OR	97116	
Latitude		Longitude	
45.51604		123.07389	
Tracking Code		Inspection Date	
RVS in 2006		7/12/2006	



Seismicity Zone: High

FEMA 154 Rapid Visual Screening Score Card

	Type	Basic Score	Vert Irreg	Plan Irreg	Pre-Code	Post-Bench	Soil C	Soil D	Soil E	RVS Score
Primary	RM1	2.8	0	-0.5	0	0	-0.4	0	0	1.9
Secondary		0	0	0	0	0	0	0	0	0
Tertiary		0	0	0	0	0	0	0	0	0

Neil Armstrong Middle School

Final RVS Score

Final Type

Final Score

RM1

1.9

FEMA-154 Collapse Potential

Moderate (>1%)



OregonGeology

Rapid Visual Screening - Senate Bill #2 - Seismic Needs Assessment
Oregon Department of Geology and Mineral Industries

Enrollment	Year Built (Field Verified)	Year Built (Alt. Source)	Est. Decade Built
946		1970	1990
Total Area (square ft)	Number of Stories	Basement	Pounding Potential
136410	1	No	Yes

Plan Irregularities	Vertical Irregularities
Reentrant Corners: Other (Adjacent Build/Entity)	None
None	None
None	None

Falling Hazards	Poor Conditions
None	None
None	None
None	None



NE General Site



W Seismic Upgrade



E General Site



N Seismic Upgrade



Neil Armstrong Middle School

Forest Grove SD 15

Wash_sch10C

Building Type		County	
School		Washington	
Street			
1777 Mt View Ln			
City	State	Zip	
Forest Grove	OR	97116	
Latitude		Longitude	
45.51546		123.07457	
Tracking Code		Inspection Date	
RVS in 2006		7/12/2006	



Seismicity Zone: High

FEMA 154 Rapid Visual Screening Score Card

	Type	Basic Score	Vert Irreg	Plan Irreg	Pre-Code	Post-Bench	Soil C	Soil D	Soil E	RVS Score
Primary	PC1	2.6	0	-0.5	0	0	-0.4	0	0	1.7
Secondary	C2	2.8	-1	-0.5	0	0	-0.4	0	0	0.9
Tertiary		0	0	0	0	0	0	0	0	0

Neil Armstrong Middle School

Final RVS Score

Final Type

Final Score

C2

0.9

FEMA-154 Collapse Potential

High (>10%)



Enrollment	Year Built (Field Verified)	Year Built (Alt. Source)	Est. Decade Built
946		1970	1970
Total Area (square ft)	Number of Stories	Basement	Pounding Potential
136410	1	No	Yes

Plan Irregularities	Vertical Irregularities
Reentrant Corners: Other (Adjacent Build/Entity)	Steps in Elevation View: Single Change (Adjacent Building/Entity)
None	None
None	None

Falling Hazards	Poor Conditions
None	Poor Concrete
None	None
None	None



W General Site



SW Poor Condition



W Poor Condition



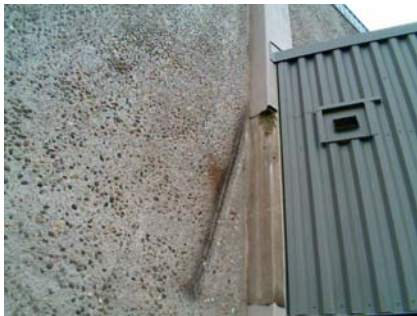
NE Plan Irregularity Secondary



N Pounding Potential



NE Pounding Potential



N Poor Condition
There may have been a roof line here and this is damage from when it was removed.



N Poor Condition



NW Secondary Structural Type
there isn't caulking in the joints,
Edge is solid concrete.

