

# Sheridan Fire District

City of Sheridan

Yamh\_fir03A

Building Type		County	
Fire - City		Yamhill	
Street			
230 Sw Mill St			
City	State	Zip	
Sheridan	OR	97378	
Latitude		Longitude	
45.09671		123.39716	
Tracking Code		Inspection Date	
RVS in 2006		8/14/2006	



Seismicity Zone: High

## FEMA 154 Rapid Visual Screening Score Card

	Type	Basic Score	Vert Irreg	Plan Irreg	Pre-Code	Post-Bench	Soil C	Soil D	Soil E	RVS Score
Primary	RM1	2.8	-1	0	0	0	-0.4	0	0	1.4
Secondary		0	0	0	0	0	0	0	0	0
Tertiary		0	0	0	0	0	0	0	0	0

Sheridan Fire District

## Final RVS Score

Final Type

Final Score

RM1

1.4

FEMA-154 Collapse Potential

Moderate (>1%)



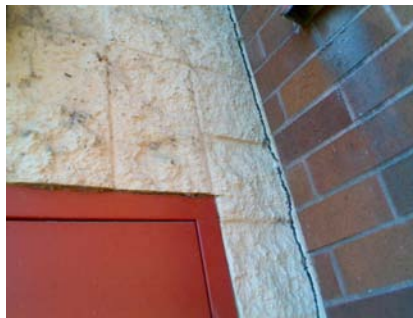
Enrollment	Year Built (Field Verified)	Year Built (Alt. Source)	Est. Decade Built
	1983	1983	1980
Total Area (square ft)	Number of Stories	Basement	Pounding Potential
	2	No	No

Plan Irregularities	Vertical Irregularities
Reentrant Corners: L Shaped	Steps in Elevation View: 2 to 3 Changes
Torsion: Eccentric Stiffness	None
None	None

Falling Hazards	Poor Conditions
None	None
None	None
None	None



N Plan Irregularity Primary



N Primary Structural Type



NW Plan Irregularity Secondary



NW Vertical Irregularity Primary



NW Secondary Structural Type  
concrete over doors



SE Building Quality



W Elevation View



SW Elevation View



NW Plan Irregularity Primary



E Field Verified Year Built  
1983



NE Building Name

