

**Elliott State Research Forest
Update 12.10.19**

Anthony S. Davis, Interim Dean



**Oregon State University
College of Forestry**



Sustainability Crisis



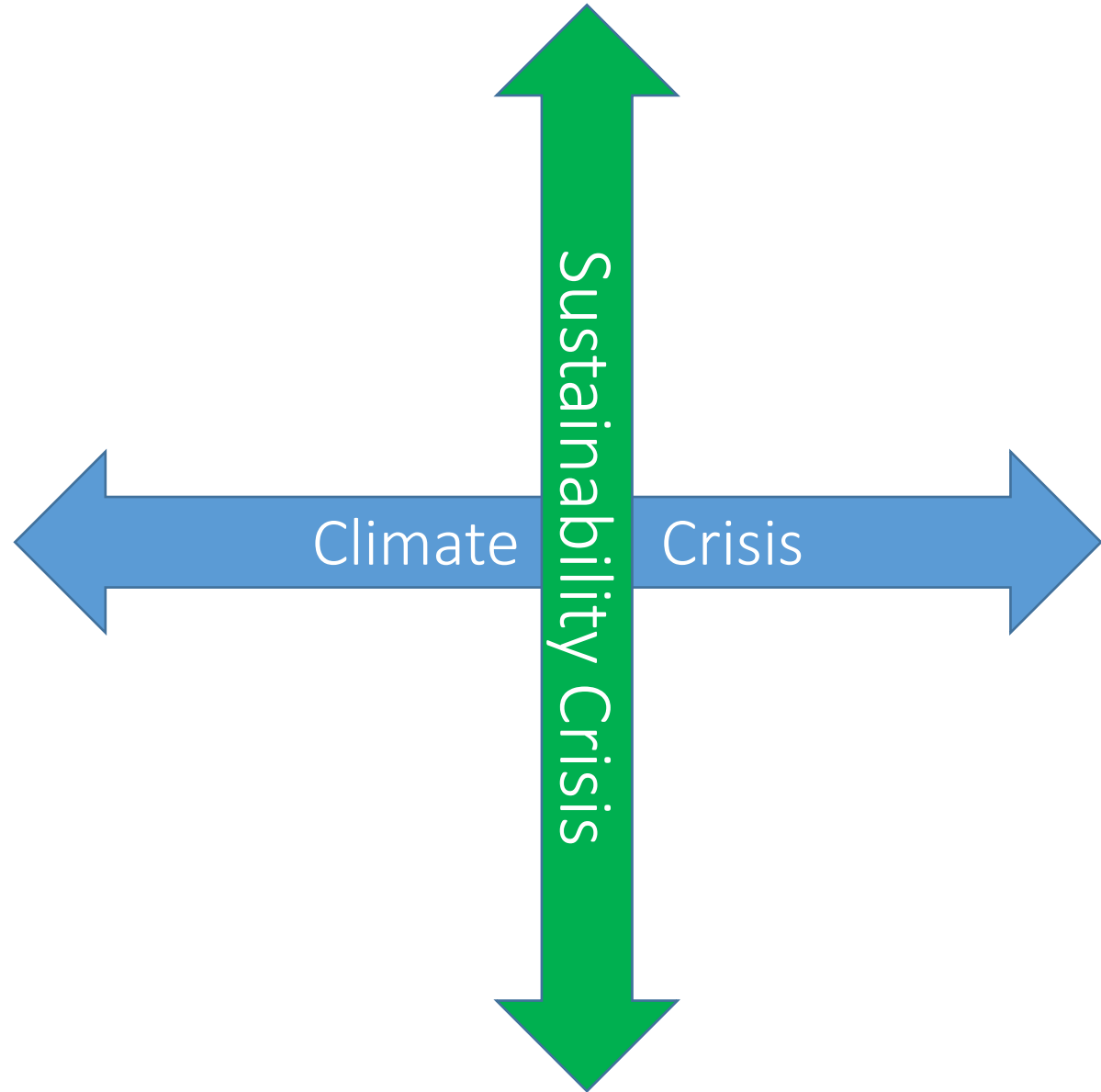
Climate Crisis

Over my lifetime:

Wood	~30%
Population	~80%
Steel	~180%
Cement	~400%

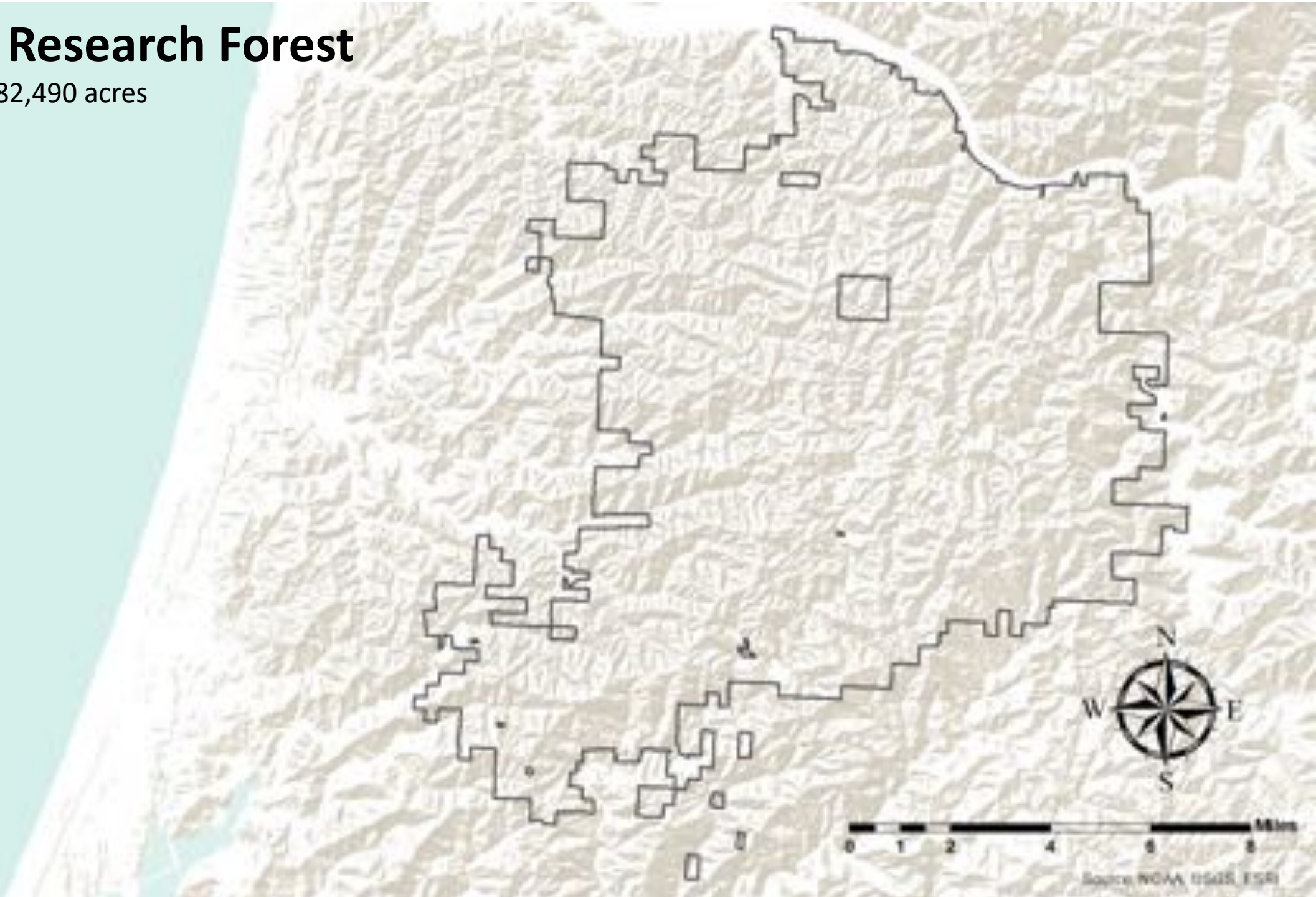
Carbon (CO ₂)	~23%
Warming	~1.8°F
Ecosystem change	
Human conflict	

We are at the intersection of a climate crisis and a sustainability crisis



Elliott State Research Forest

Total Analysis Area = 82,490 acres



Elliott State Research Forest

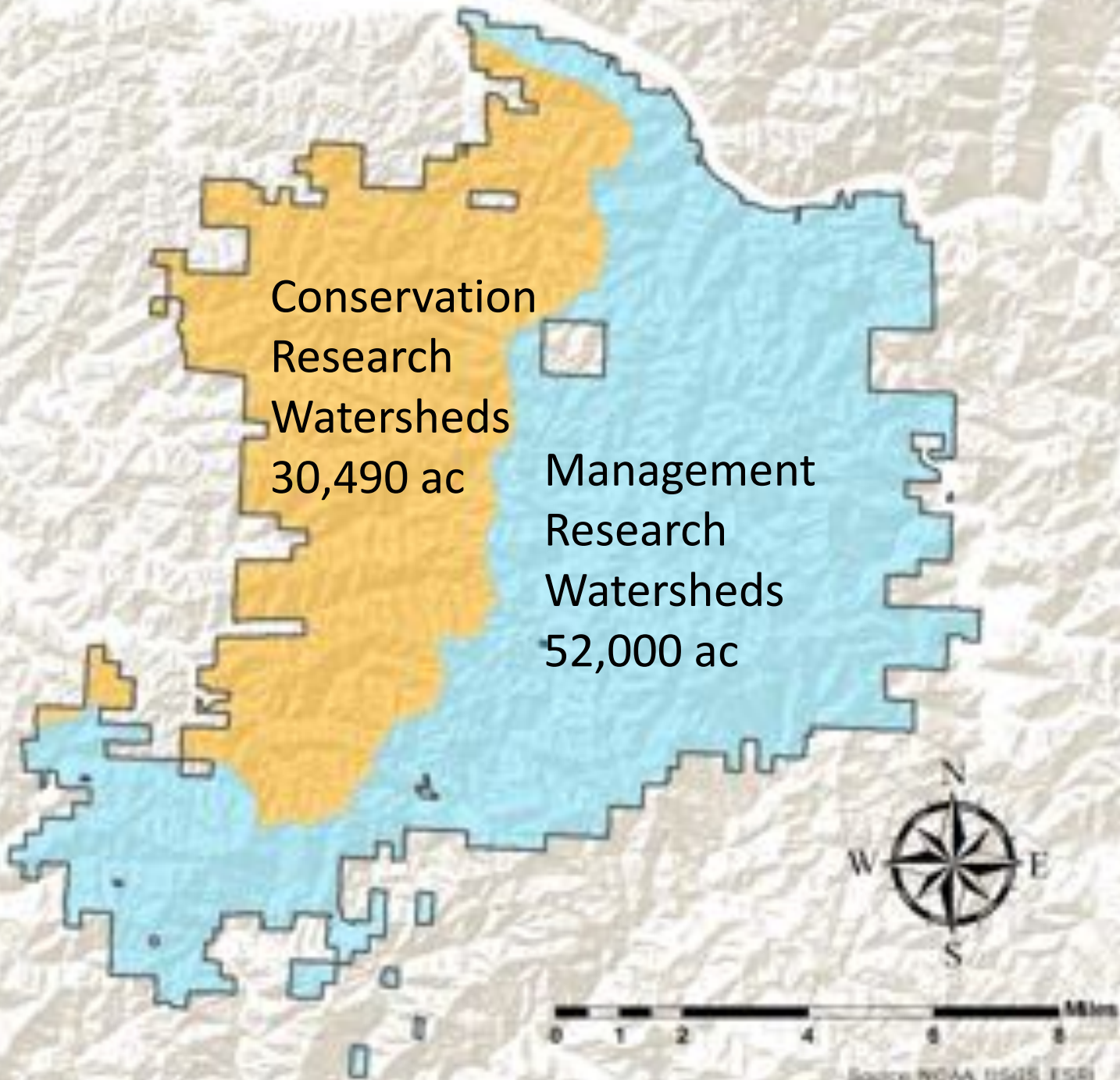
Total Analysis Area = 82,490 acres

Conservation Research Watersheds

- Biodiversity and forest habitat-related research to advance conservation of at-risk species

Management Research Watersheds

- Research examining effects of different management approaches on conservation outcomes, carbon storage, timber production, and livelihood objectives



Elliott State Research Forest

Total Analysis Area = 82,490 acres

- Scientific/statistical rigor
 - Landscape scale
 - 53 watershed “catchments” from 425 to 2,000 acres
 - Multiple replications of each management approach
- Land allocations
 - 58% reserves/conservation
 - 26% extensive/multiple-values management
 - 16% intensive management
- Platform for variety of research
- Allows for scaling/transfer

