



Oregon

Tina Kotek, Governor

Department of State Lands

775 Summer Street NE, Suite 100

Salem, OR 97301-1279

(503) 986-5200

FAX (503) 378-4844

www.oregon.gov/dsl

State Land Board

Tina Kotek

Governor

Tobias Read

Secretary of State

Elizabeth Steiner

State Treasurer

State Land Board Meeting February 10, 2026

Agenda Item Presentations

- Real Property Annual Report Presentation – page 2-13
- Climate Action Spotlight Presentations
 - Geologic Carbon Spotlight Presentation – page 14-25
 - Elliott State Research Forest, Forest Carbon Project Presentations
 - Department of State Lands Presentation – page 26-32
 - Anew Climate Presentation – page 33-46



Real Property Annual Report

Chris Castelli, Deputy Director of the Land Management Division
Amber McKernan, Manager of Real Property Program



Program Services

1 LEASING RANGELANDS

2 LEASING AGRICULTURAL LANDS

3 PROTECTING CULTURAL RESOURCES

4 HABITAT PROTECTION

5 WORKING FORESTLANDS

6 LAND TRANSACTIONS & OWNERSHIP

7 INDUSTRIAL, COMMERCIAL, & RESIDENTIAL

8 MAINTAINING PUBLIC ACCESS

Fiscal Highlights

\$987,063 NET OPERATING INCOME PROGRAM-WIDE

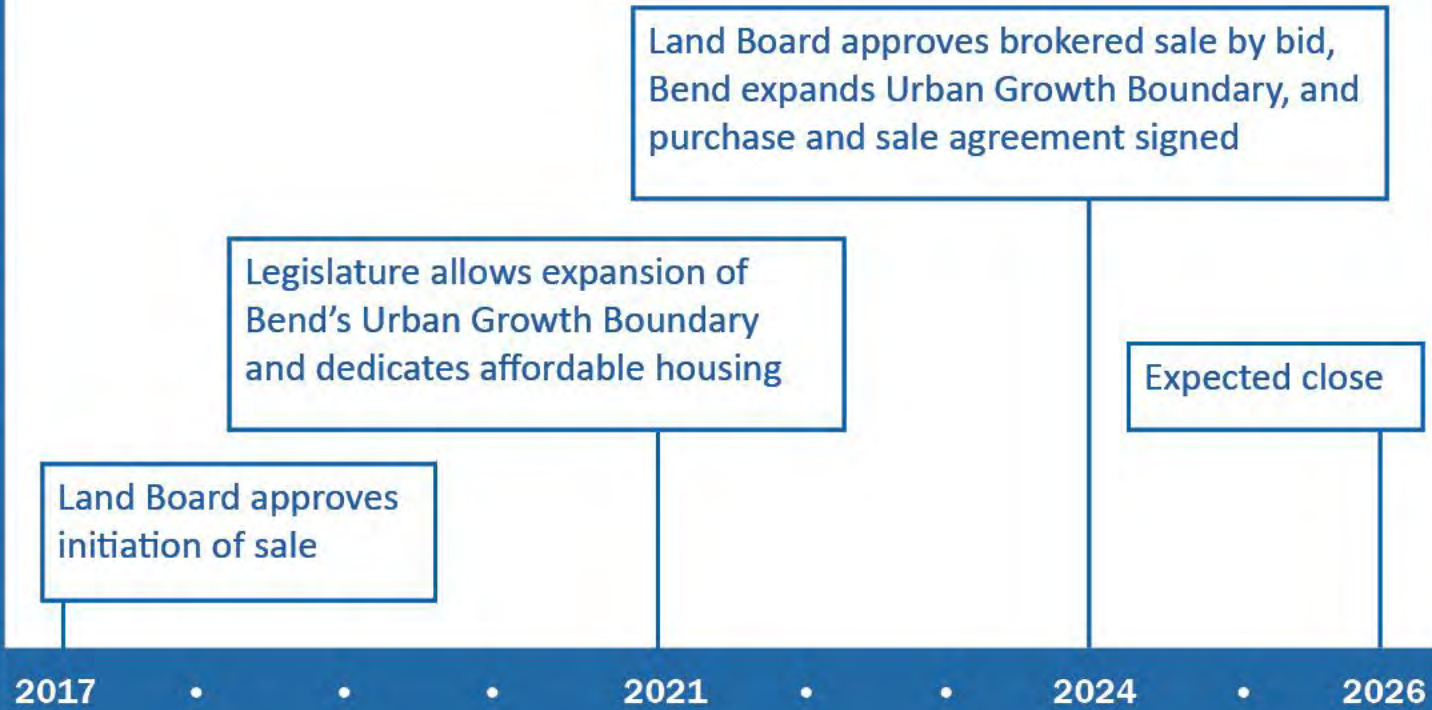
\$1 MILLION WILDFIRE SUPPRESSION COSTS

Report Takeaway

Meeting Real Estate Needs



STEVENS TRACT TIMELINE



Report Takeaway

Managing Wildfire Costs



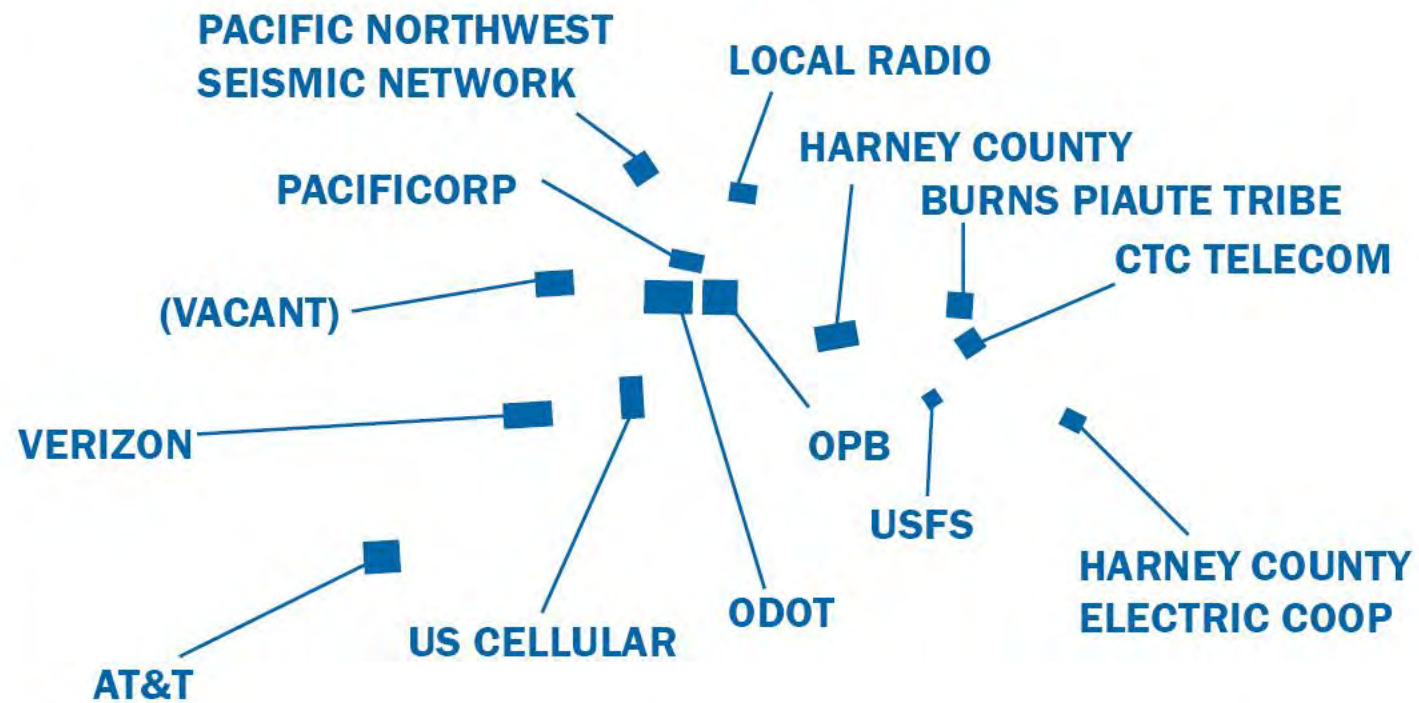


DSL IN DURKEE FIRE: 5,725 ACRES

Report Takeaway

Updating Communication Sites





The background of the slide is a close-up photograph of a plant with thin, woody, reddish-brown branches. Several small, five-petaled purple flowers with bright yellow centers are in various stages of bloom. The background is a soft-focus, light brown, textured surface, possibly soil or a rock face.

Six Upcoming Actions

1 DSL-MANAGED FORESTLANDS

2 RENEWABLE ENERGY

3 HABITAT MITIGATION

4 PRINEVILLE

5 PARTNERSHIP PROJECTS CONTINUE

6 RULEMAKING

Four Priority Projects

1 STEVENS ROAD TRACT

2 SOUTH REDMOND INDUSTRIAL LAND

3 LANDS OWED TO THE STATE

4 GEOLOGIC CARBON SEQUESTRATION





Thank You

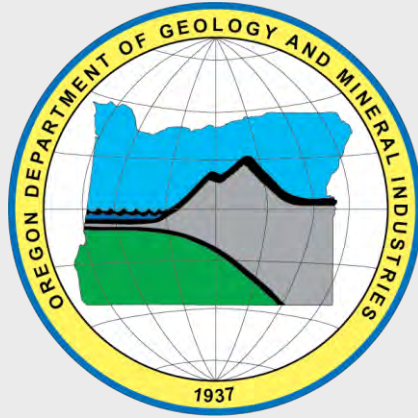
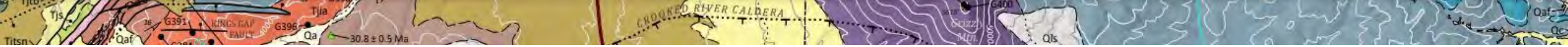
Chris Castelli

DEPUTY DIRECTOR OF THE LAND MANAGEMENT DIVISION

Amber McKernan

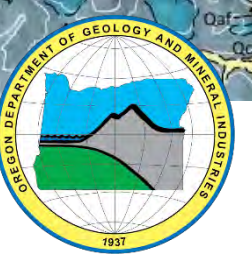
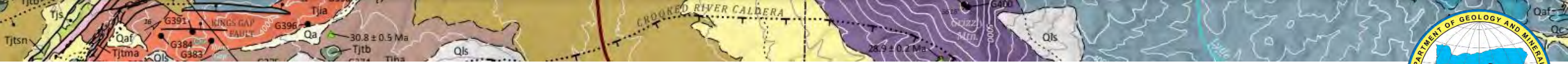
MANAGER OF REAL PROPERTY PROGRAM

Oregon.gov/DSL



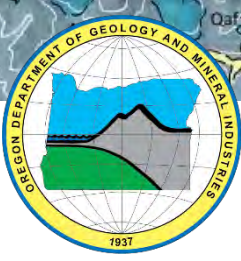
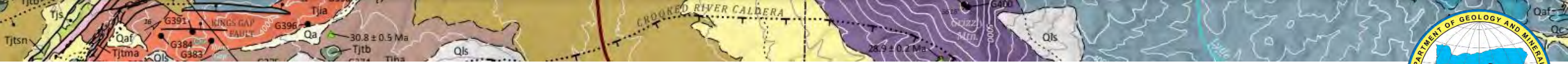
Geologic Carbon Sequestration in Oregon

Oregon Dept. of Geology and Mineral Industries
February 2026



Outline

1. DSL-DOGAMI interagency agreement: **signed ✓**
2. Carbfix agreement update
3. DOGAMI positions
 - Geoscience Lead: **filled ✓**
 - Project Manager: **offer accepted**
 - Geotechnical Specialist: **TBC**
4. Tribal engagement and consultation update
5. Site selection update
6. Project Timeline
7. Current state of the GCS market



Agreements

DSL-DOGAMI interagency agreement

- Signed November 26th, 2025
- Sets out
 - Project relationship between DSL-DOGAMI
 - Executive, Fiscal, Engagement, and Technical team structures
 - Full list of tasks to be completed within the project
 - Nominal timeline for tasks
 - Mechanisms for project reporting and review

Carbfix Agreement

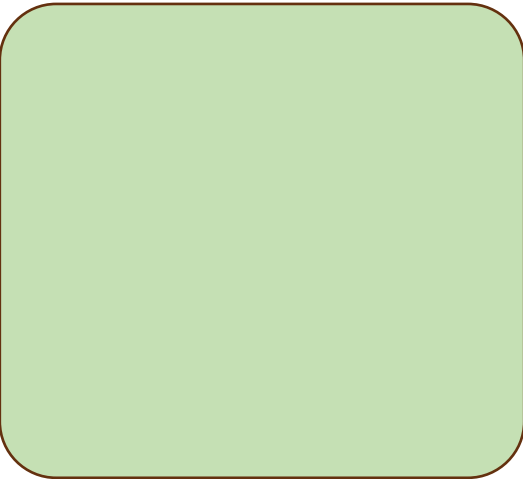
- Draft agreement in discussion
- A scope of work is evolving

A man with a beard, wearing a dark puffy jacket, sunglasses, and a cap, stands next to a golden retriever. They are in a rugged, rocky outdoor environment with sparse vegetation. The man has his hands in his pockets, and the dog is sitting and looking towards the camera.

Dr Richard Walker

20 years of research experience in
basaltic systems:

- Fluid-rock interaction
- Fluid flow in basalts
- Rock properties and rock strength
- Natural mineral carbonation

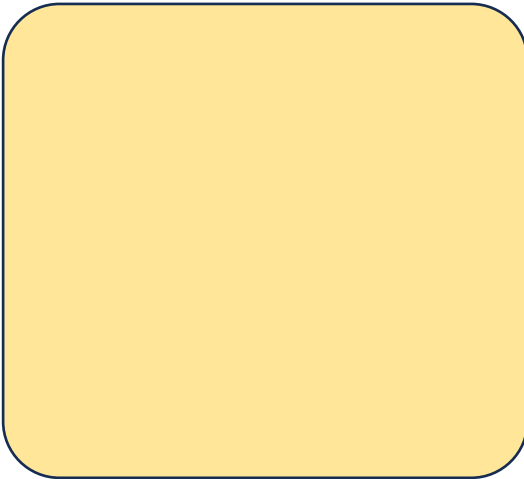


offer accepted

Strong background in:

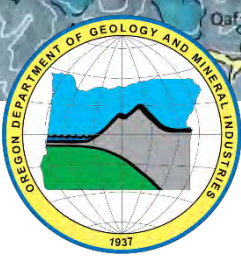
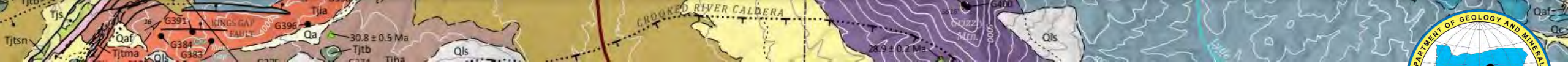
- Project management
- Decarbonization geoscience topics
- Carbon storage technical viability
- Well-drilling

Start date: March 2nd



[under assessment]

DOGAMI will assess technical needs
once Project Manager begins



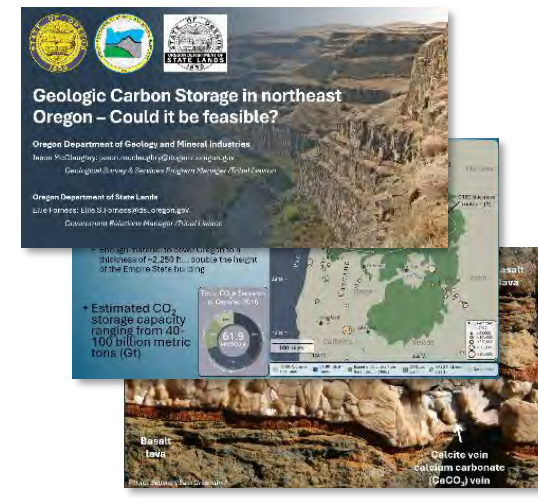
Tribal engagement and consultation

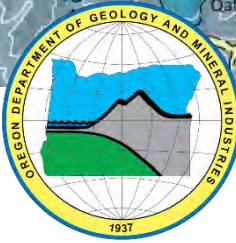
Principles

- **Recognize** Tribal Sovereignty
- **Communicate** early and often
- **Prioritize** Tribal engagement
- **Collaborate** with Tribes and other State and governmental agencies
- **Identify** Oregon Tribes with regional interest in the project
- **Differentiate** between government-to-government vs. community relations
- **Listen** to Tribal perspectives, needs, ideas, and concerns
- **Respond** to and incorporate feedback
- **Build Trust** with Tribal and community partners
- **Find** areas for partnership in the project

Activities

2023	<ul style="list-style-type: none"> • CTUIR Carbon and Culture Symposium: October
2025	<ul style="list-style-type: none"> • Update sent to representatives of the nine Federally recognized Tribes: May • Geologic Carbon Storage Factsheet: September • CTUIR Carbon and Culture Symposium: September
2026	<ul style="list-style-type: none"> • LCIS Culture Cluster Meeting: January • Draft tribal engagement plan for the GCS project: January • <i>LCIS Natural Resource Work Group: February</i> • <i>Staff-to-staff discussions with Tribal representatives: TBC</i> • <i>Official consultation during permitting process: TBC</i>

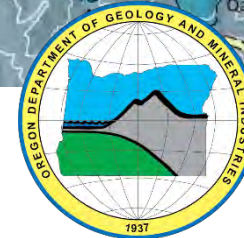




Site Selection Criteria

- An exploration well is critical in validating a basalt CO₂ storage site
- Siting is strategically chosen to provide the most representative data across the key criteria:
 - Safety
 - Mineralization Potential
 - Storage Capacity
 - Injectivity & Operational Feasibility
- Decision criteria on where to drill are focused on maximizing information about the flow path and reactivity of the target reservoir

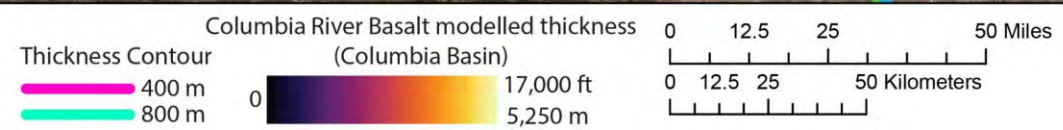
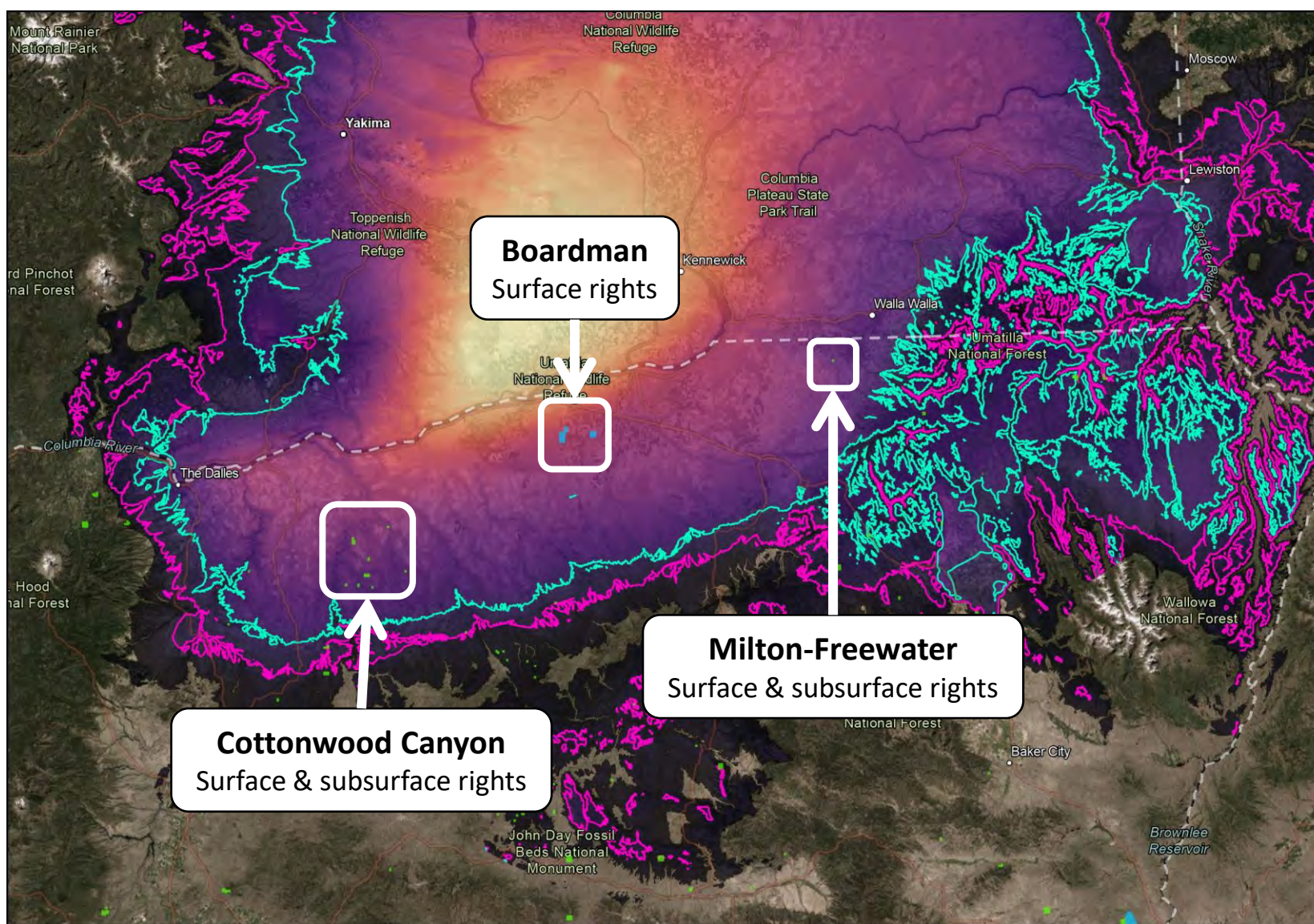
Category	Criterion
Geology	Basalt Thickness Mineral Chemistry Caprock Integrity Structural Setting
Data Gaps	Legacy Subsurface Data Borehole Ground Truth
Hydrology	Water Salinity (TDS) Injectivity Potential
Logistics	Proximity to Source Utility Access
Surface Ownership & Access	Rights & access Footprint & Slope Road Infrastructure

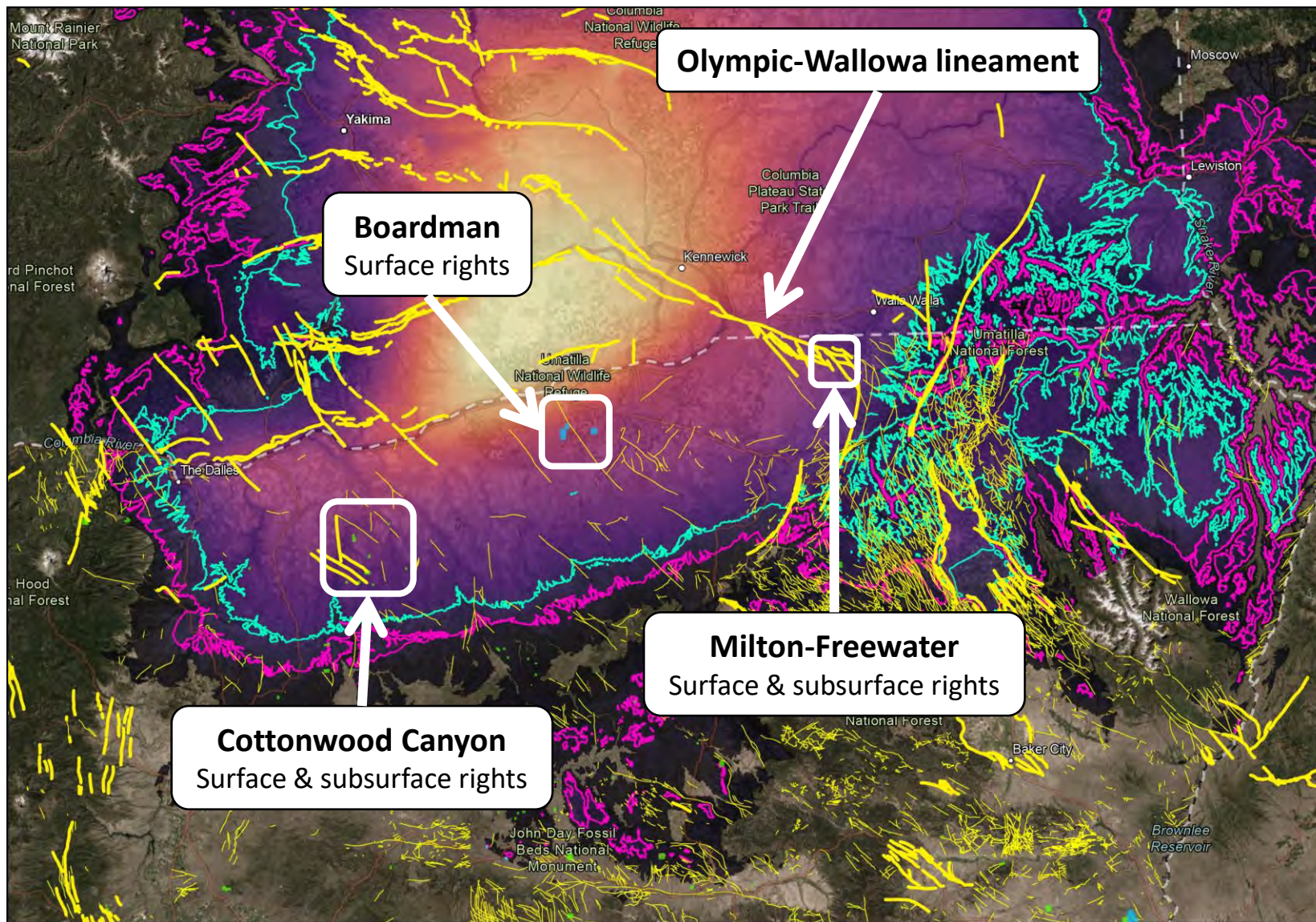
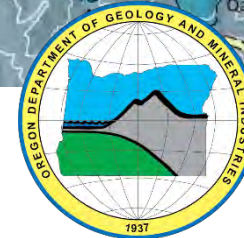


Site selection

Category 1: Geology

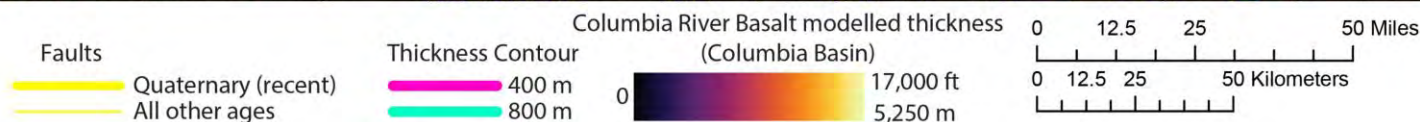
- DSL school lands
 - Surface access required
- Columbia River Basalt modelled thickness
- Minimum thickness for injection technologies
 - Supercritical CO₂: ~800 m
 - Dilute solution: ~400 m



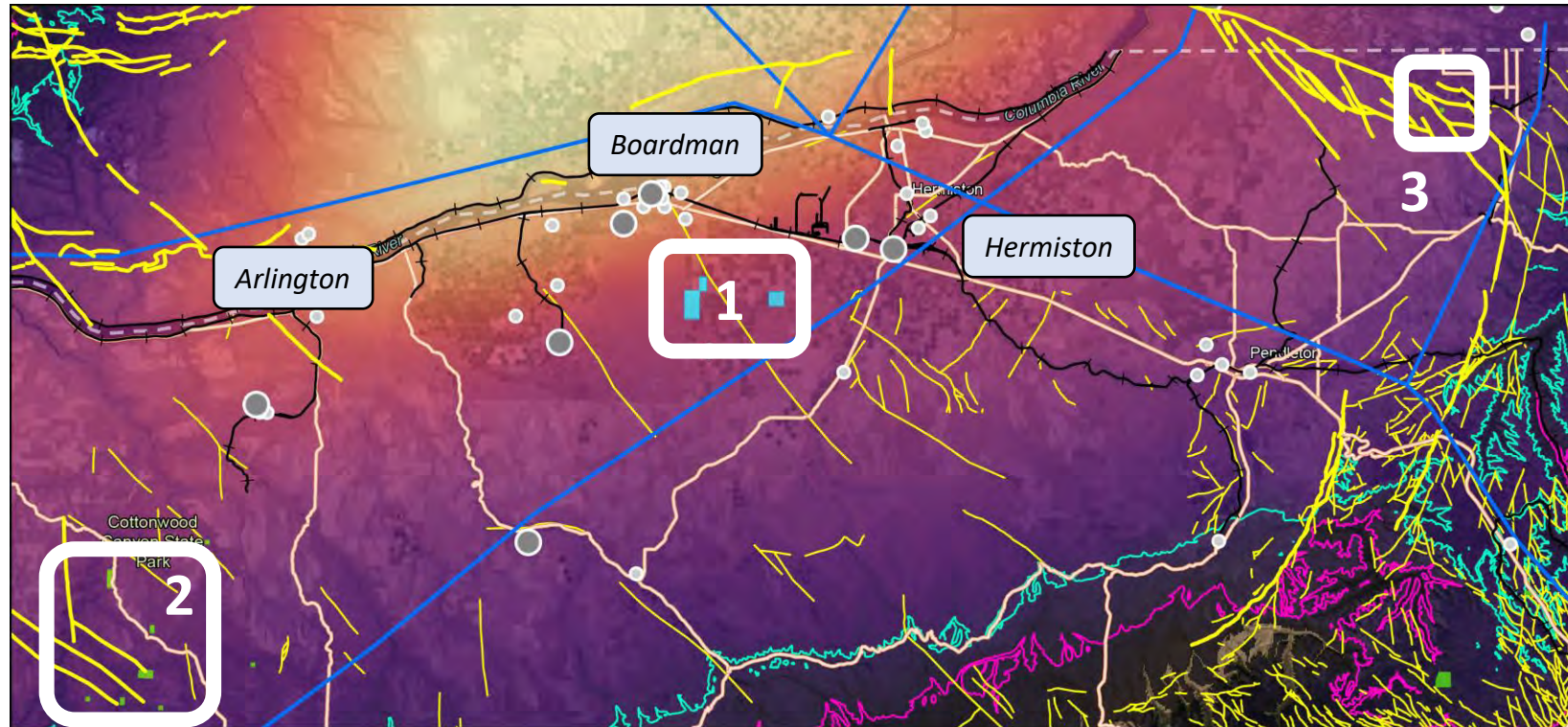


Site selection Category 1: Geology

- DSL school lands
- Columbia River Basalt modelled thickness
- Minimum thickness for injection technologies
- Proximity to *recent* faults
- Proximity to *other* faults

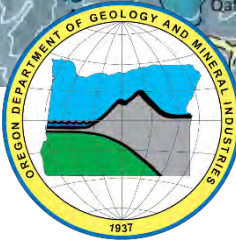


Site selection Category 2: Logistics



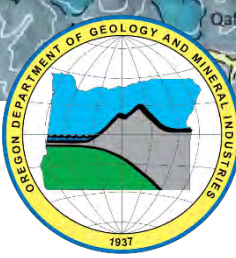
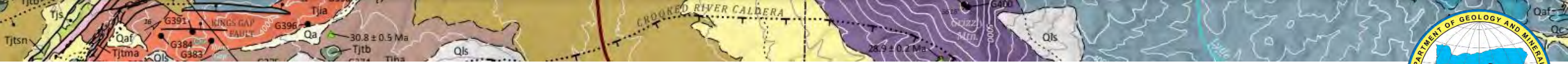
- Proximity to CO₂ sources
- Existing infrastructure
- Next and Ongoing:
 - Required access rights for drilling
 - In consultation with DOJ
 - Site specific potential for cultural significance
 - Existing leases
 - Assess and fill data gaps
 - Well planning
 - DSL special-use application

- 1: Boardman sites: *surface rights only*
- 2: Cottonwood Canyon sites: *surface & subsurface rights*
- 3: Milton-Freewater site: *surface & subsurface rights*



Project timeline

[illegible]



Update on the US Carbon Storage Market

- Market size
 - Estimated (US) CCS market value of **\$2.8 billion** in 2026
 - Annual growth of ~14-18%
 - Clean energy investment continued to exceed fossil fuel supply investment in 2025
- Impact of the 45Q tax credit
 - Current credits provide \$85/tCO₂ for storage from industrial sources & \$180/tCO₂ for DAC
 - Credits expanded to allow enhanced oil recovery
- Policy and funding shifts
 - ~\$7 billion in proposed federal cuts to CCUS demonstrations (Hermiston CarbonSAFE)
 - Shifts from CO₂ infrastructure funding to other technologies (e.g., nuclear)
- Infrastructure and regulatory trends
 - Market moving to hubs over isolated projects
 - More states seeking primacy to reduce EPA bottlenecks



Elliott State Research Forest Carbon Project

State Land Board Meeting
February 10, 2026

Carbon Project History



The State Land Board's Vision for the Elliott

Guiding work since 2017

- Keeping the forest publicly owned with public access
- Decoupling the forest from the Common School Fund, compensating the school fund for the forest and releasing the forest from its obligation to generate revenue for schools
- Continuing habitat conservation planning to protect species and allow for harvest
- Providing for multiple forest benefits, including recreation, education, and working forest research

ESRF Climate and Self-Sufficiency Goals



The ESRF Carbon Project is centrally connected to:

1. Meeting Statewide and ESRF climate policy objectives.
2. Advancing the ESRF's self-sufficiency principle.
3. Demonstrating and testing a new business model—relevant to the ESRF and potentially beyond.

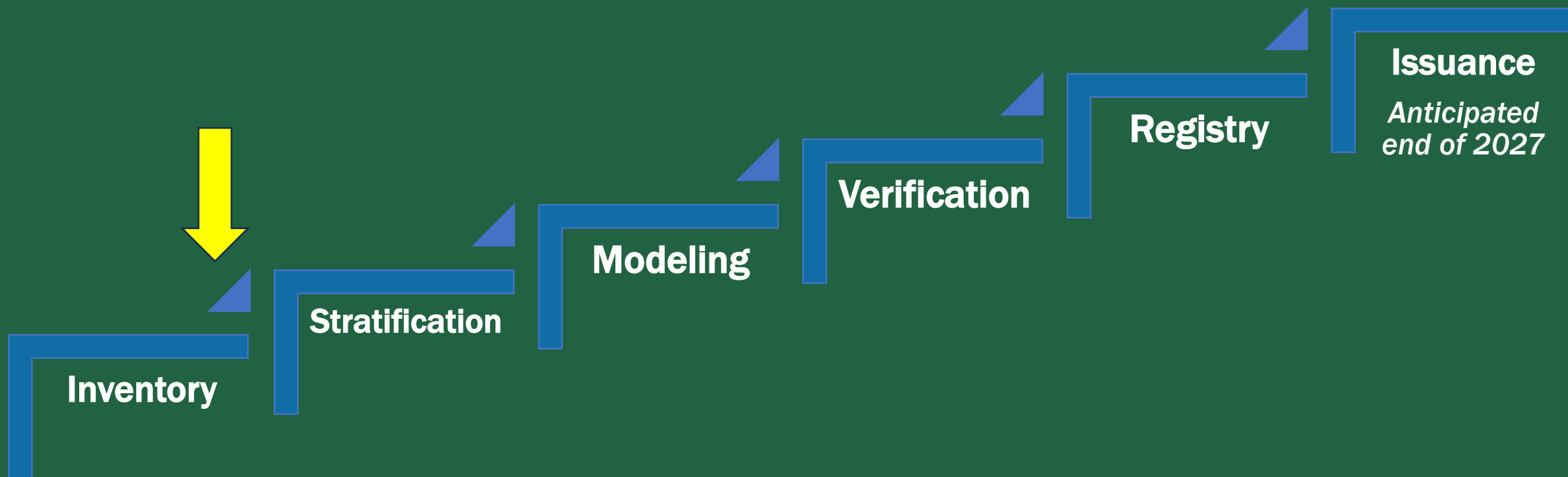
What a Carbon Project Means

Meeting multiple values (and demonstrating they can co-exist):

1. Advancing Oregon's Climate Policy Objectives (incl. EO 25-26)
2. Sustainable Stewardship
3. Research and Science Compatibility
4. Co-Benefit Production

Carbon Roadmap: *Steps to Issuance*

*Credits enable voluntary market
sales to climate-committed
companies*



Outcomes of next step work:

1. How many credits will exist.
2. How was additionally ensured (baseline vs project scenario).
3. How much revenue per year (and where it will be invested).
4. Engagement of ESRF Board and public.

February 10, 2026

Oregon State Land Board Meeting



Agenda



- Who Anew is
- Why ESRF fits in Anew's Portfolio
- Crediting outlook
- The role of credits in GHG reductions
- Project status/technical update
- The mechanics of IFM projects
- Project milestones
- Advancing integrity in forestry projects
- Credit purchasing process



Who we are

Anew brings together climate-committed businesses and environmental projects to create measurable impact. Together, we are helping build the low-carbon economy of the future.



Wholesaler

Anew offers environmental instruments & products from markets around the world to address Scopes 1, 2 & 3 emissions



Market Maker

We look for opportunities to use the power of the market to improve the environment



Developer

We are the largest and most established carbon offset developer in North America.



Advisor

Anew simplifies the complex and helps clients take action at any stage in their climate journey.

300+

carbon projects

20+

years of experience

\$5B

in global impact

Carbon Credits

Carbon solutions that complement reduce and replace strategies—nature-based, tech-driven, and globally aligned.

- Active in compliance and voluntary markets across North America and Europe
 - Top ranked supplier of compliance and voluntary carbon credits
 - Turnkey transaction service for sale, transfer, and retirement of credits
 - Expert administration of registry management and credit generation, including standardized protocol development
- | | |
|----------------------------|--|
| ✓ Forests & grasslands | ✓ Community projects (e.g. cookstoves) |
| ✓ Regenerative agriculture | ✓ BECCs & Biochar |
| ✓ Landfill gas | ✓ Industrial projects |



200M+

Carbon tonnes transacted

6M+

Acres protected

125+

Registered IFM carbon projects

35

CCP labeled LFG projects in the Anew portfolio

300+

Carbon projects in the Anew portfolio



Why Elliott State Research Forest fits into Anew's Portfolio



Alignment of Values & Mission

We choose to lead with creativity including using innovative solutions

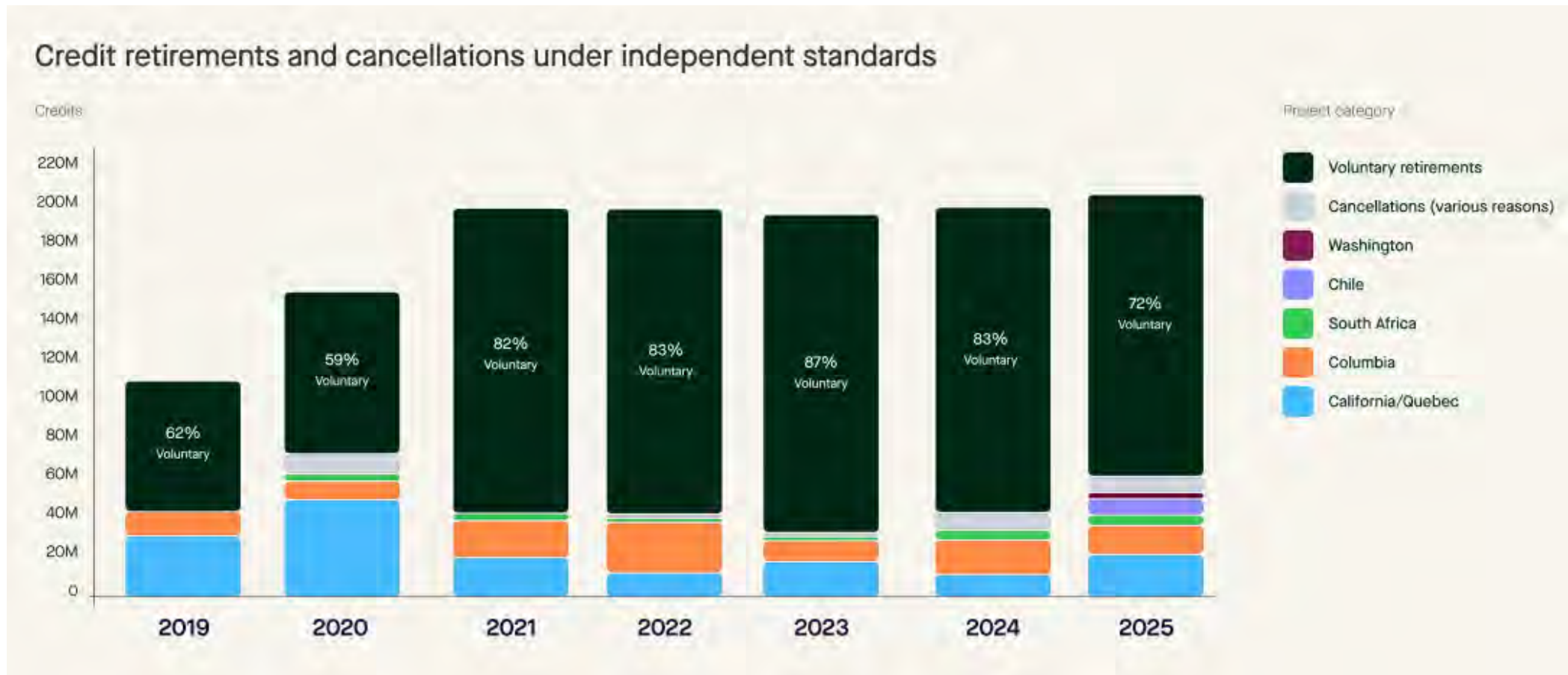
Location

The project is in a highly desirable location for buyers in the voluntary carbon market

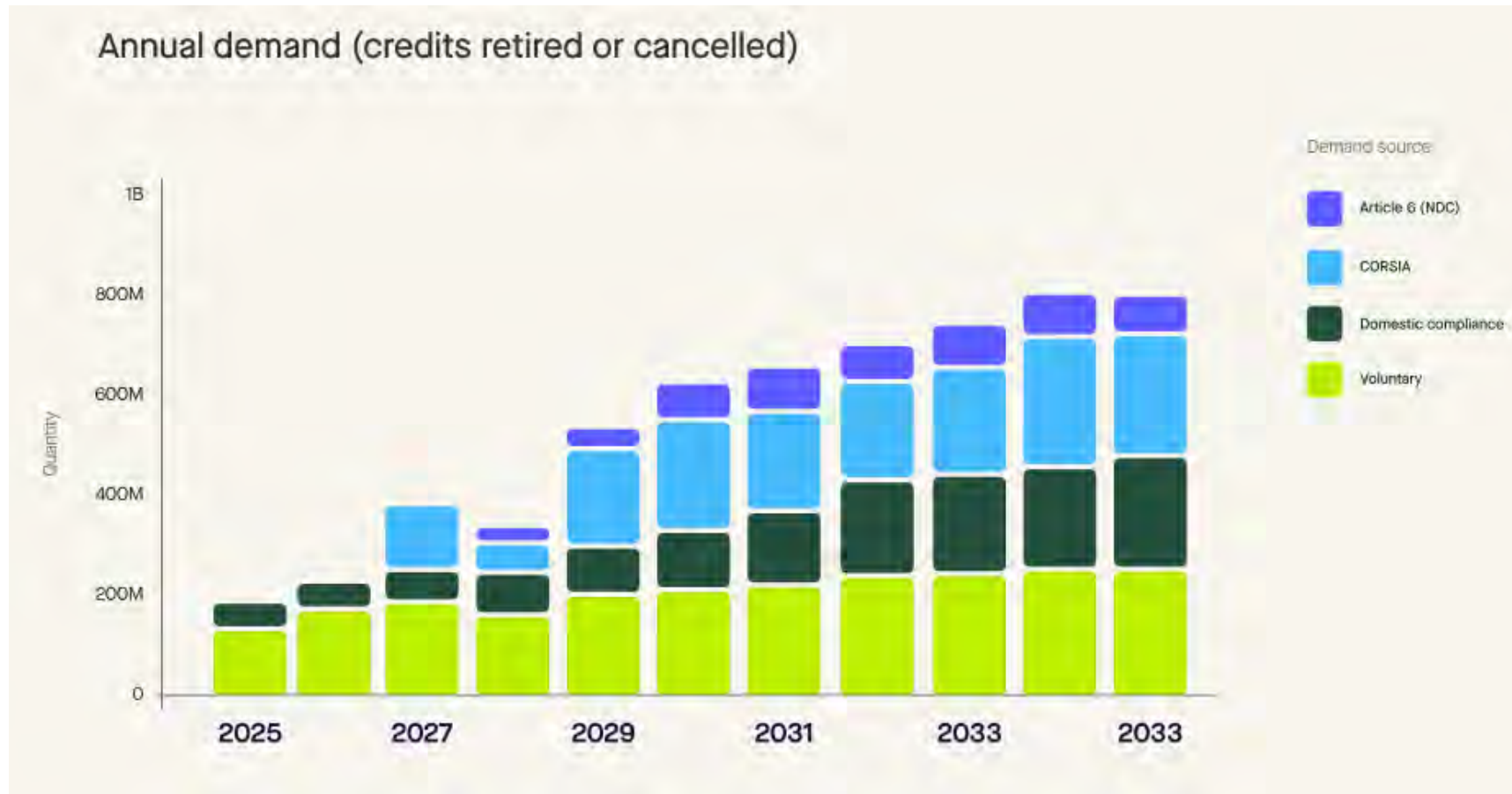
Co-Benefits

Nationally-relevant research forest connection (science and forestry practices)
Sustainable stewardship partnership efforts (e.g., biodiversity, local community, Indigenous, wood products)

Compliance and Voluntary Carbon Market Trends



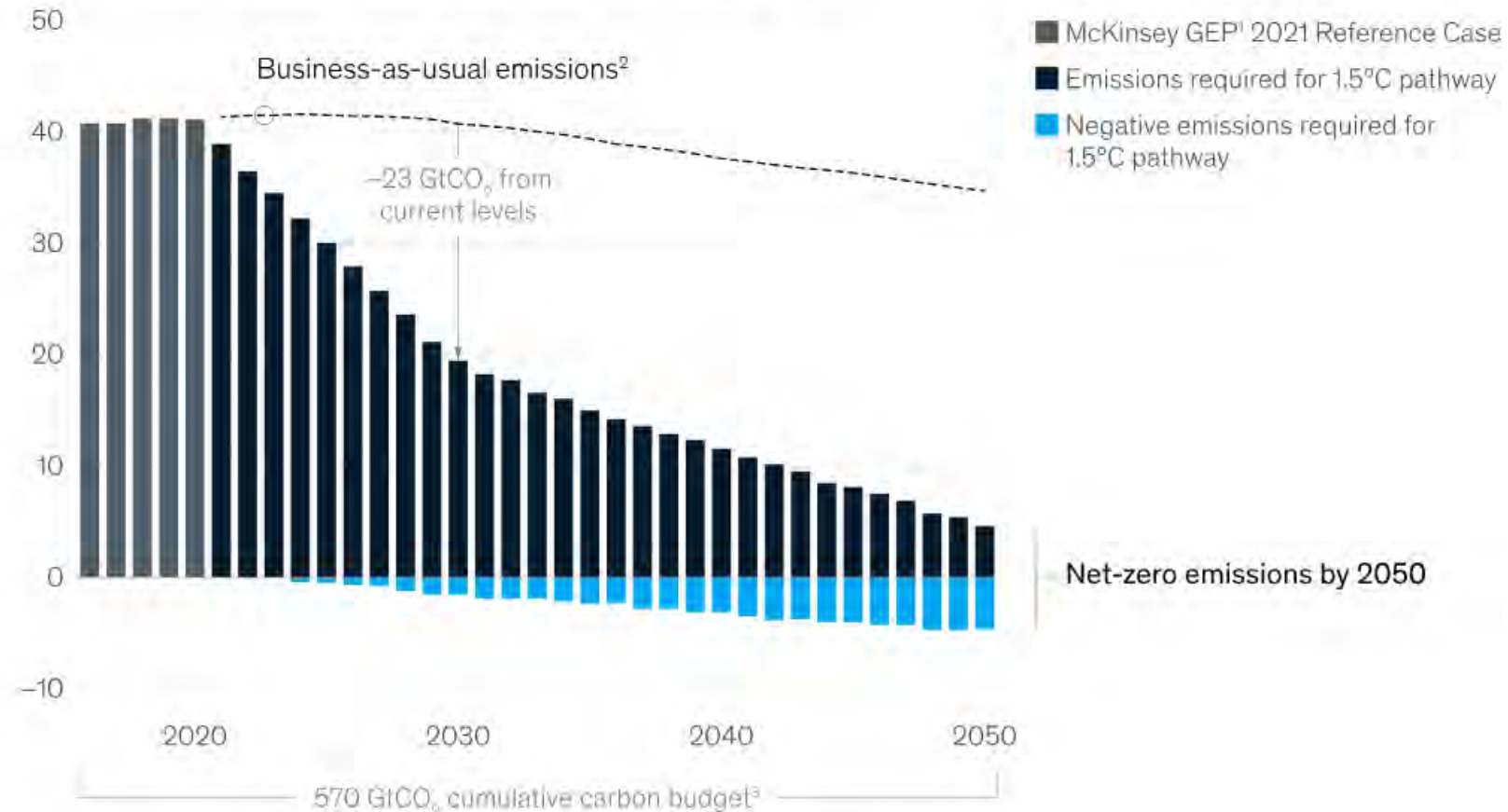
Future Carbon Credit Market Forecast



The Role of Voluntary Carbon Markets in Addressing Climate Change

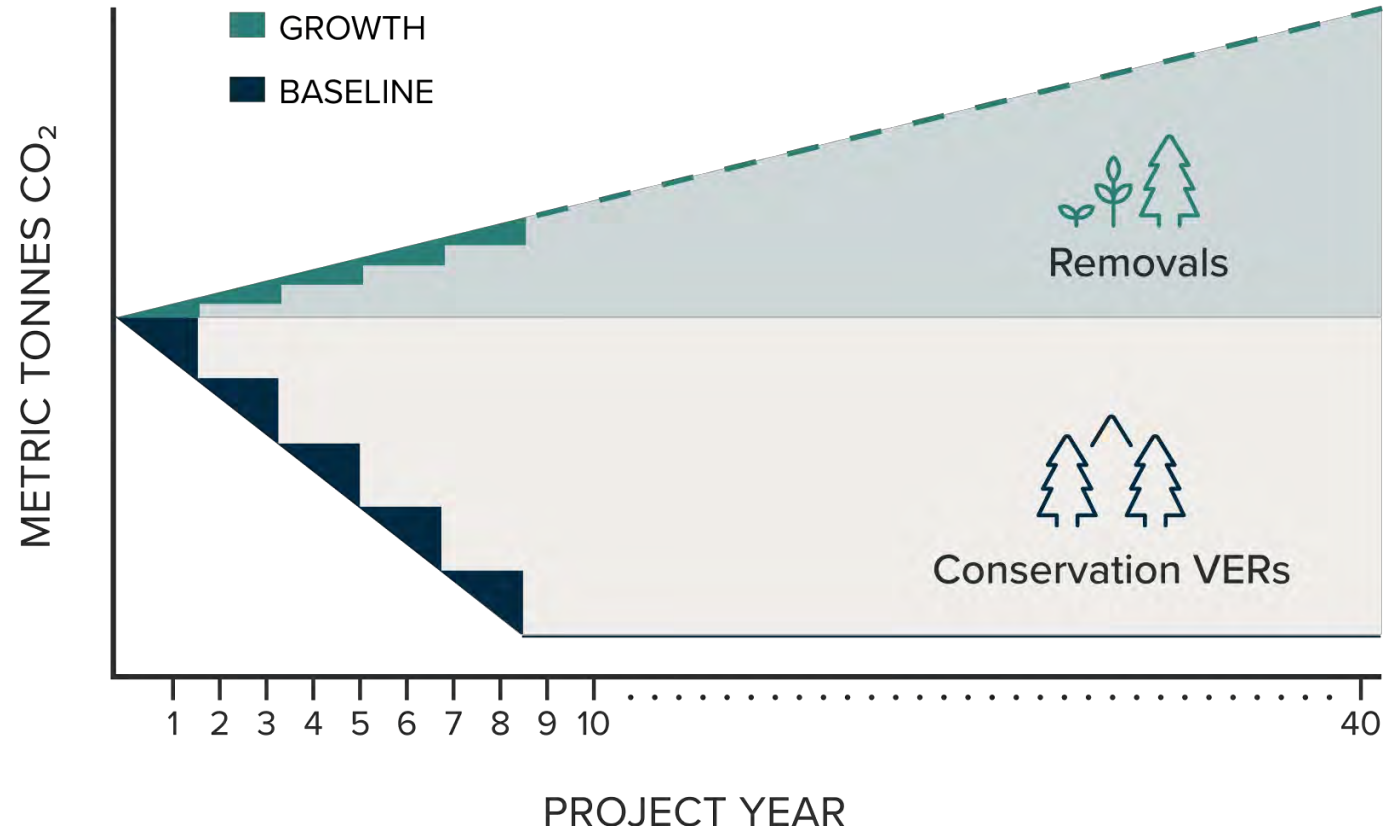
Reaching the 1.5-degree warming target could require a large quantity of negative emissions, including some generated using carbon credits.

Global carbon-dioxide emissions, gigatons (GtCO₂) per year

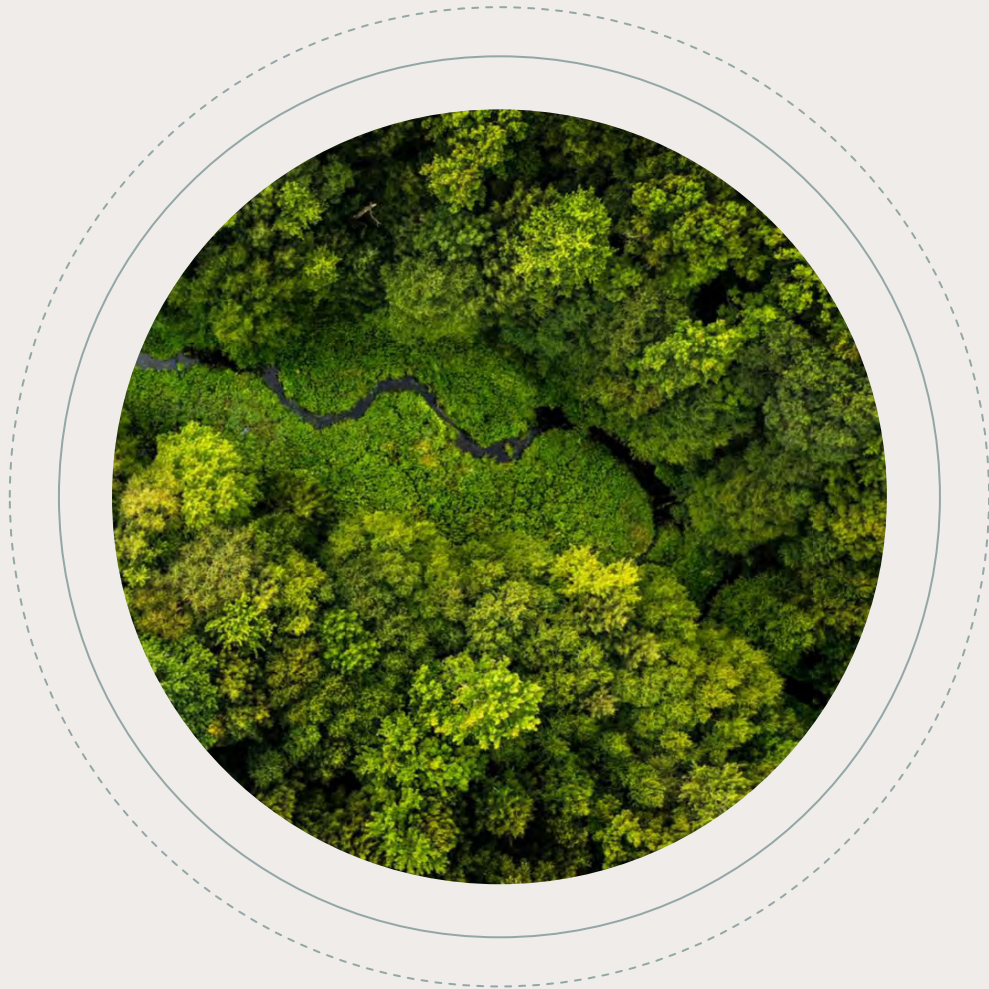


Improved Forest Management (IFM)

Conservation and Removal Quantification



Increasing Integrity: ACR IFM Methodology Update



ACR IFM v2.0 and earlier:

Static Baselines

Baselines were set for 20 years

NPV Maximization Model

Baselines were based on what could have theoretically been harvested on the property by the landowner

ACR IFM v2.1 is a complete overhaul of how ACR IFM baselines are determined:

Dynamic Baselines

Baselines are remodeled at least every 5 years

Baseline Harvest Constraints

Baseline harvest rates are constrained by observed neighboring historical harvesting rates using remote sensing

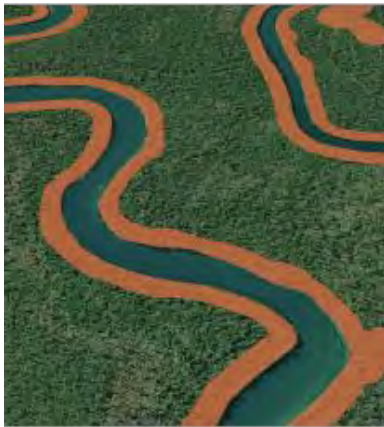
Professional Forester Attestation:

Requires a professional forester to attest on feasibility of the baseline assumptions during every verification

New Annual Dynamic Baseline Evaluation



5 Step Annual Dynamic Evaluation Framework



Legality



**Operability
and Access**



**Financial
Feasibility**

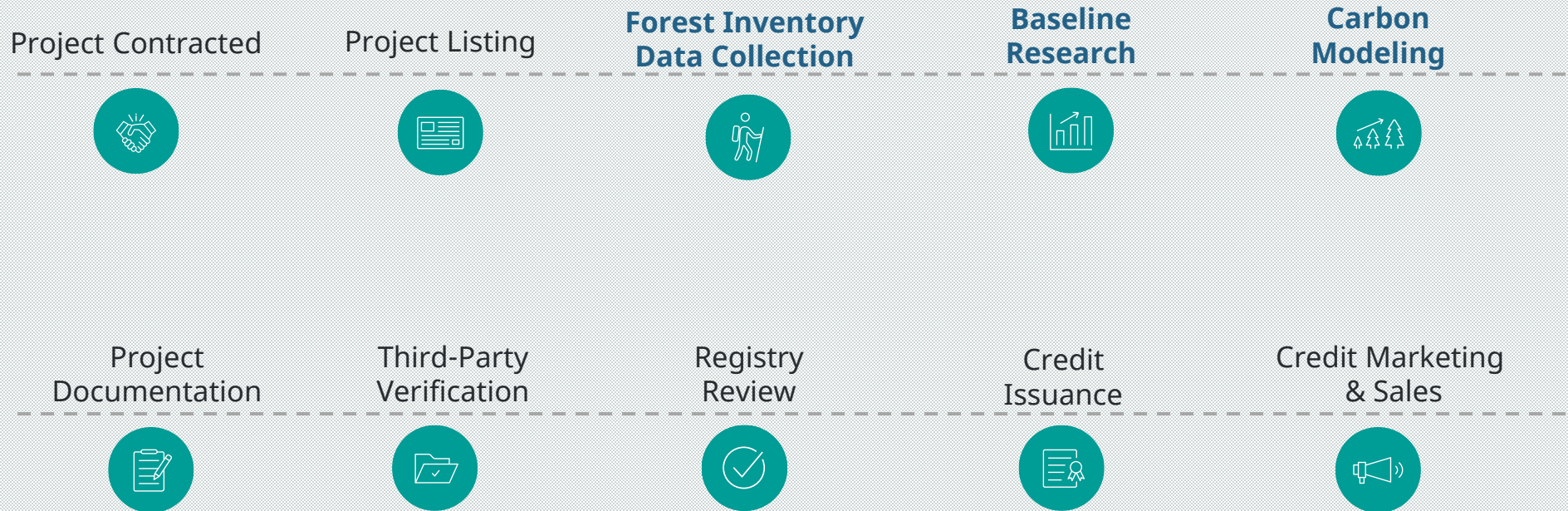


**Regional Timber
Market Capacity**



**Common Practice
Silviculture**

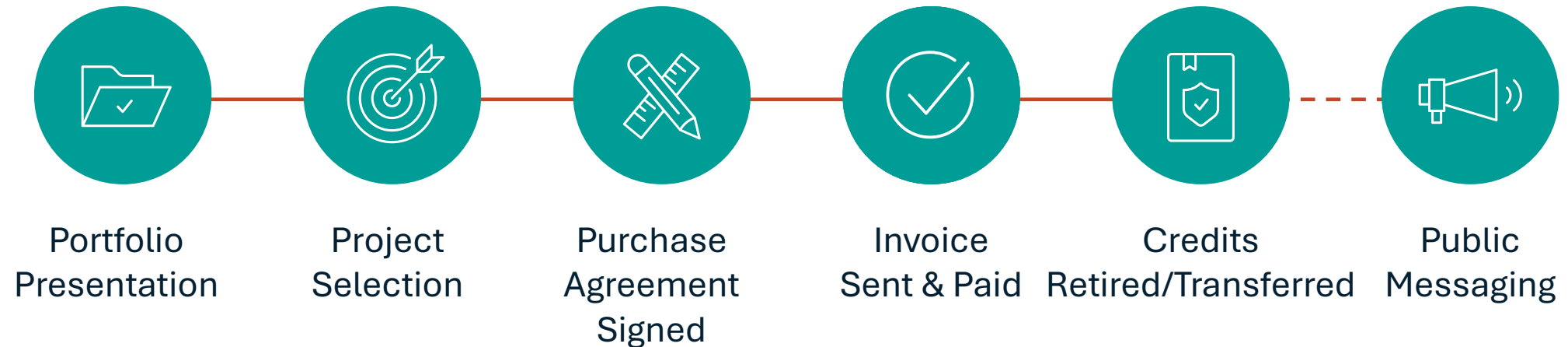
Project Milestones



Our implementation team works on multiple components of the project at once.
We are in the process of forest inventory which is tied to the baseline research and carbon modeling.

Anew expects to issue credits in Q3 2027

Credit Purchasing Process



*Note that credits can be presold prior to issuance. This provides a guaranteed price for credits, hedging against future market downturn. However, locking-in price may also lead to credits being sold lower than market in the future if prices increase.

Lizzie Aldrich

Vice president of Business Development and
Head of Voluntary Carbon Sales

laldrich@anewclimate.com

