



Asset Management Plan

Information Session and
Public Rule Hearing
March 12, 2024
12:30PM





Agenda

12:30 PM - Information Session

- Overview of the proposed Asset Management Plan
- Question and Answer

1:00 PM - Public Rule Hearing

- Spoken Comments

**Agenda is estimated and dependent upon duration of Q&A. The public hearing will begin immediately following close of the information session.*

Give Spoken Comment Today



Use the "Raise Hand" feature to provide comment. Time is limited and we may not be able to hear from all of you today.

- To raise your hand, click the reactions near the bottom of your screen and click "raise hand" or by pressing *9 if you are on the phone.
- You will be called in the order in which (virtual) hands are raised.
- Please keep your mic muted unless it is your turn to speak.

When it's your turn to speak:

- When your turn is coming up, the moderator will call on you to begin speaking.
- Please say your name, where you're from, and any organization you're representing.
- Please keep your remarks to **three minutes** and be respectful of each other and agency representatives. We will help track your time.

Provide Written Comment



Written comments may be submitted through **April 3, 2024** by:



Email

realproperty@dsl.oregon.gov



Online form

www.oregon.gov/dsl/lands/Pages/2023plan.aspx



Mail

Oregon Department of State Lands

951 SW Simpson Ave., Suite #104

Bend, OR 97702



Asset Management Plan For School Lands Draft Presentation

Amber McKernan, Real Property Program Manager
Brian Cochran, Real Property Policy Specialist



Who is the Department of State Lands (DSL)?

Common School Fund Mission

Malheur Stockade/ PHOTO: Randy Wiest



OLDEST AGENCY IN OREGON

- 3.4 million acres of lands granted to state from federal government
- Established at statehood to benefit schools
- Administrative arm of the State Land Board
- Revenues earned contribute to the Common School Fund
- Funds distributed annually to public school districts.
- Today: 1.5 million acres of surface and subsurface acres

DEPARTMENT PROGRAMS

- Oregon-owned waterways
- South Slough Reserve
- Elliott State Research Forest
- Regulatory Removal and Fill Law
- School Lands

Asset Management Plan Background

- Real Property Program carries out the Asset Management Plan
- 1995 – Legislature directed an Asset Management Plan
- This draft is the fourth version of the Asset Management Plan
- Last Plan was completed in 2012
- Draft divided into five sections – introduction, guiding principles, land classifications, action areas, and measuring success

2024 ASSET MANAGEMENT PLAN

MAJOR TASKS	STATUS
Report on achievements of the previous plan and frame process for developing the next plan	 Complete in 2022
Gather initial perspectives from the public and stakeholders	 Complete in 2023
Conduct research and analysis	 Complete in 2023
Develop a draft plan for public review and comment	 In progress / On track
Present the proposed plan to the State Land Board for consideration	 Not yet started

OVERALL STATUS: On track to **meet the June 30, 2024 target** with the plan anticipated to be before the Land Board for consideration in spring 2024.



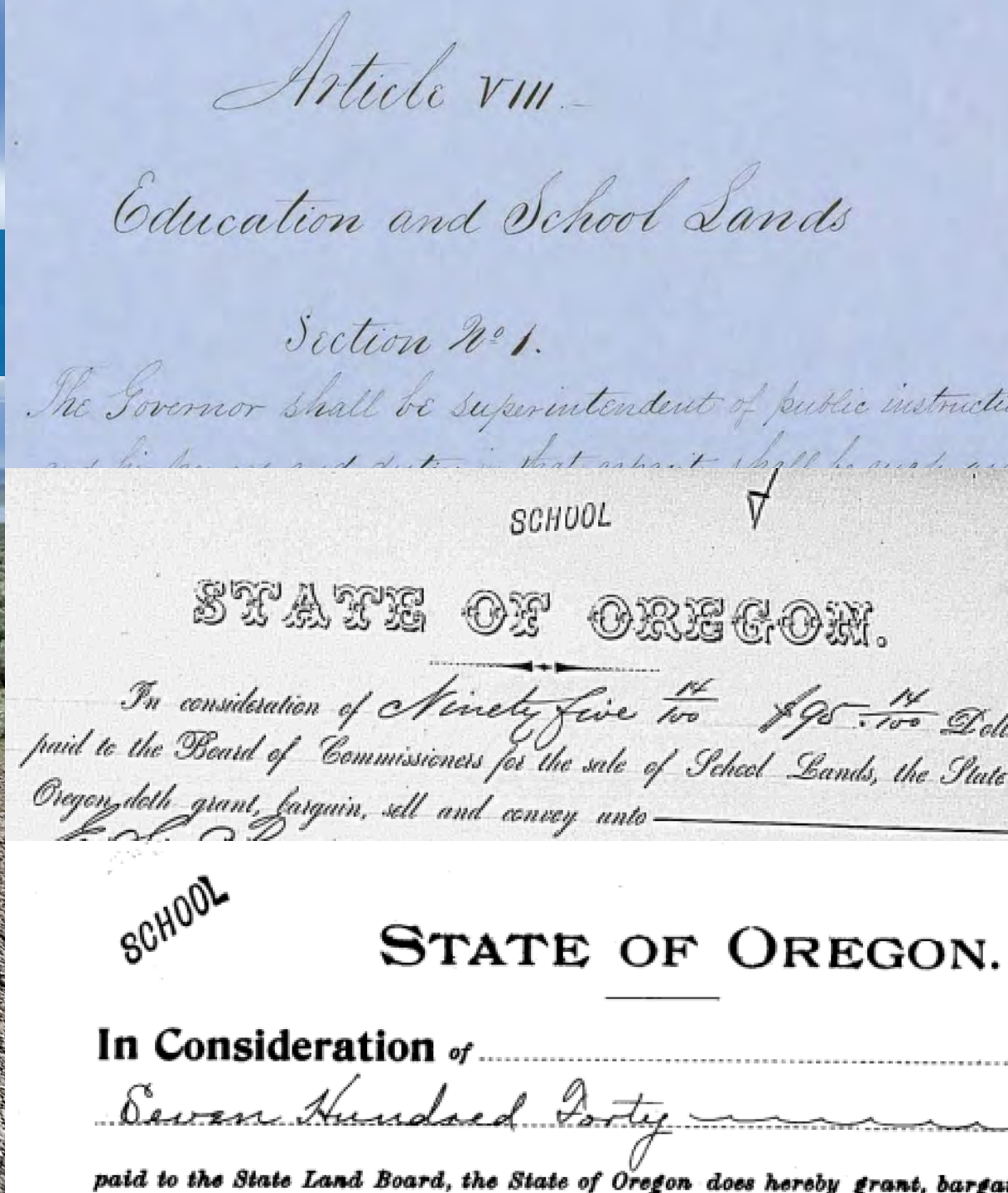
School Lands



Asset Management Plan covers:

- 96% Constitutionally Dedicated School Lands
- 4% Statutory Lands

Crump Lake / PHOTO: Brian Cochran



Article VIII -

Education and School Lands

Section No. 1.

The Governor shall be superintendent of public instruction and his duties in that respect shall be such as

SCHOOL

STATE OF OREGON.

In consideration of Ninety five $\frac{14}{100}$ \$95. $\frac{14}{100}$ Dollars paid to the Board of Commissioners for the sale of School Lands, the State of Oregon, doth grant, bargain, sell and convey unto

SCHOOL

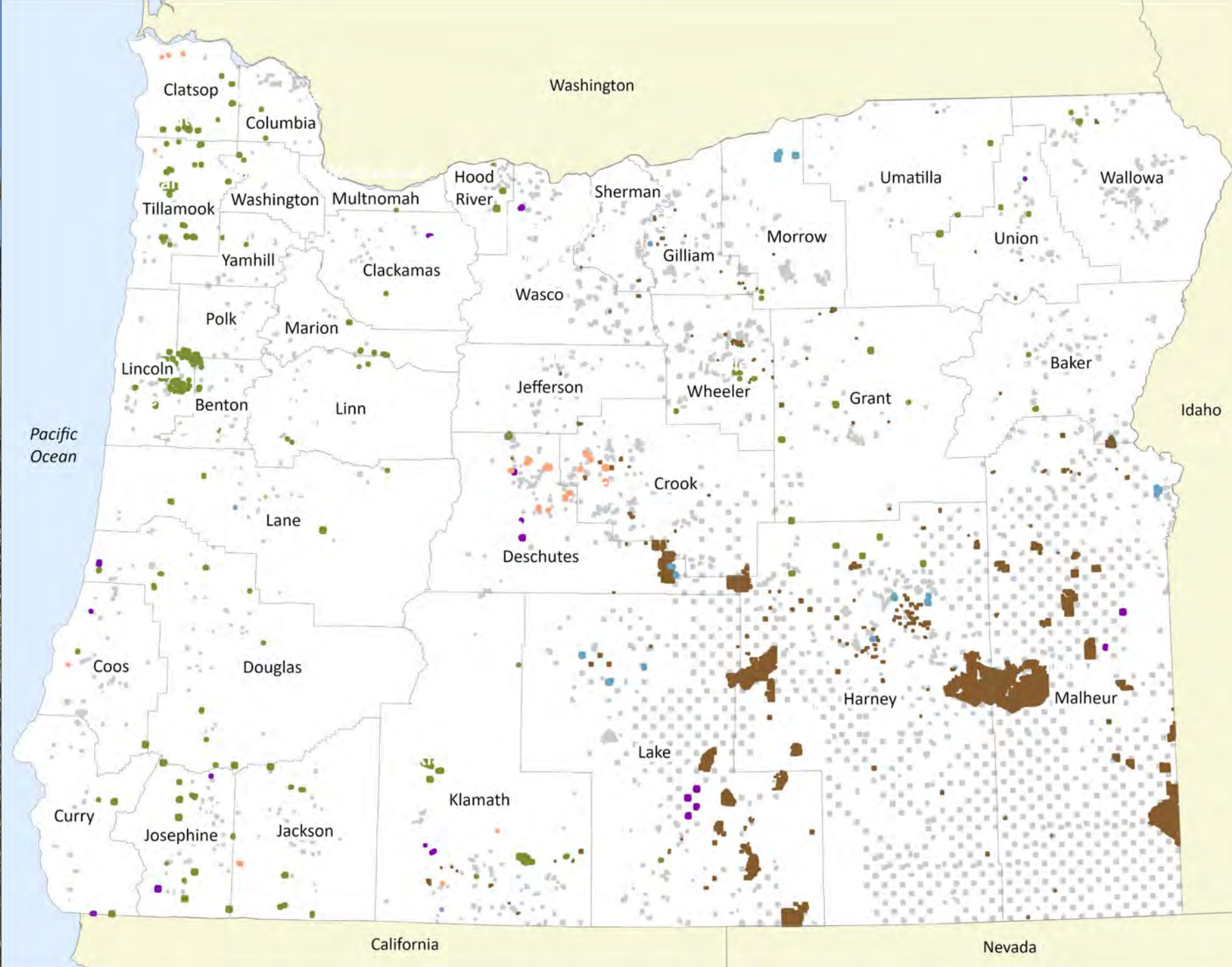
STATE OF OREGON.

In Consideration of

Seven Hundred Forty

paid to the State Land Board, the State of Oregon does hereby grant, bargain

School Lands



-  Agricultural Lands
-  Forestlands
-  Industrial/
Commercial/
Residential Lands
-  Rangelands
-  Special Stewardship
Lands
-  Mineral Only
Ownership



Pacific Ocean

California

Nevada

Washington

Clatsop

Columbia

Tillamook

Washington

Multnomah

Hood River

Sherman

Umatilla

Wallowa

Clackamas

Gilliam

Morrow

Union

Polk

Marion

Wasco

Lincoln

Benton

Linn

Jefferson

Wheeler

Grant

Baker

Idaho

Lane

Crook

Deschutes

Coos

Douglas

Harney

Malheur

Curry

Josephine

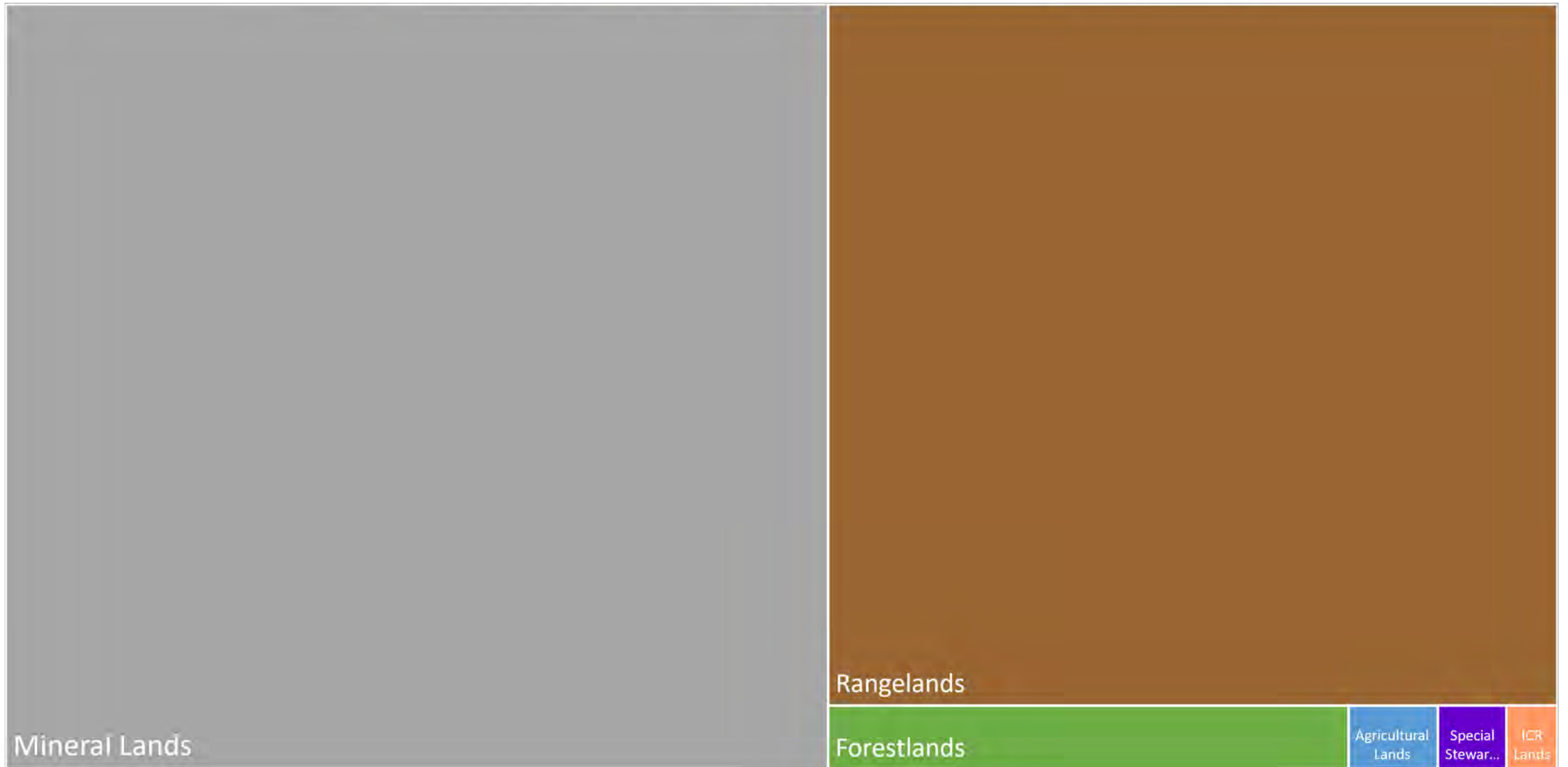
Jackson

Klamath

Lake

School Lands by Land Classification

■ Forestlands ■ Agricultural Lands ■ Rangelands ■ ICR Lands ■ Mineral Lands ■ Special Stewardship Lands



Action Areas

1. Modernize Administrative Rules
2. Transition to paperless processes, records
3. Use the Land Revolving Account
4. Ensure legal access to school lands
5. Depart from real market value tracking
6. Transfer management of forestlands
7. Increasing DSL-managed forestland work
8. Complete in-lieu acquisitions
9. Renewable energy land expansion
10. Environmental Markets Analysis
11. ICR Land planning
12. Expanding Partnerships



Swamp Cr., Harney County, Juniper removal / Photo: Randy Wiest

Action Areas: Forestlands

6. Transfer management of forestlands*
Oregon Department of Forestry-managed
vs.
DSL-managed
7. Increasing DSL-managed forestland work*
DSL staff are managing forests, creating
unique projects that benefit communities,
resiliency, and the Common School Fund



Action Area: Renewable Energy Lands

An aerial photograph of a solar farm. The solar panels are arranged in neat, parallel rows that stretch across a landscape. The panels are dark blue or black with a grid of silver lines. The ground between the rows is a mix of brown soil and green grass. The sky is a clear, light blue.

9. Renewable energy land expansion

- Large revenue potential
- Currently have three sites under leases as they are being explored for development
- Developing Analysis for renewable energy potential on other DSL lands
- Plan to use a portion of renewable revenue to improve rangeland habitat

Action Areas: Partnerships



Cow Lakes, Malheur County Aerial Herbicide Applications/ PHOTO: Randy Wiest



Desert Creek, Crook County Fuels reduction work / PHOTO: Randy Wiest



Stockade Block, Malheur County Prescribed burning/ PHOTO: Randy Wiest



Bolger Creek Juniper Removal, Harney County / PHOTO: Randy Wiest

Measuring Success - Performance Details

- Discontinue Return on Asset Value
- Total Annual Revenue (gross income)
- Net Operating Income (annual revenue – expenses)
- Calculated by each land classification
- Reported annually to the State Land Board

Measuring Success - Outcomes

Non-monetary benefits of school land management

- Supporting climate resilience and environmental benefits
- Meeting community needs through land planning (ICR lands)
- Reducing wildfire risk on school lands and surrounding communities
- Supporting local and state economies
- Considering environmental justice communities



Thank You!

**Brian Cochran, Real
Property Policy Specialist**

brian.cochran@dsl.oregon.gov

Oregon.gov/DSL



Questions?



Provide Written Comment



Written comments may be submitted through **April 3, 2024** by:



Email

realproperty@dsl.oregon.gov



Online form

www.oregon.gov/dsl/lands/Pages/2023plan.aspx



Mail

Oregon Department of State Lands

951 SW Simpson Ave., Suite #104

Bend, OR 97702

Give Spoken Comment Today



Use the "Raise Hand" feature to provide comment. Time is limited and we may not be able to hear from all of you today.

- To raise your hand, click the reactions near the bottom of your screen and click "raise hand" or by pressing *9 if you are on the phone.
- You will be called in the order in which (virtual) hands are raised.
- Please keep your mic muted unless it is your turn to speak.

When it's your turn to speak:

- When your turn is coming up, the moderator will call on you to begin speaking.
- Please say your name, where you're from, and any organization you're representing.
- Please keep your remarks to **three minutes** and be respectful of each other and agency representatives. We will help track your time.



Thank You!

Oregon.gov/DSL

