



Oregon

Tina Kotek, Governor

Department of State Lands

951 SW Simpson Ave., Suite #104

Bend, OR 97702

(541) 388-6112

FAX (541) 388-6480

www.oregon.gov/dsl

State Land Board

March 6, 2024

TO: INTERESTED PARTY

Tina Kotek
Governor

FROM: Oregon Department of State Lands

LaVonne Griffin-Valade

RE: **Notice of Proposed Clearing Title to State-Owned Formerly Submerged and Submersible Lands: 64870-LE and 64904-LE**

Secretary of State

Tobias Read
State Treasurer

We are reaching out to inform you that parties are exchanging deeds to clarify ownership and remove cloud on title related to formerly submerged and submersible lands in Columbia County:

- **Transaction # 64870-LE (approximately 6 acres):** Abutting tax lot 200 from the Ordinary High Water Line to the center of the current channel of the Clatskanie River
- **Transaction # 64904-LE (approximately 1 acre):** Abutting tax lots 201 and 3100 from the Ordinary High Water Line to the center of the current channel of the Clatskanie River

In order to clear title to the lands located at: **Township 07 North, Range 04 West, Section 08**. See the attached map(s) for more information.

How to Comment

You may provide public comment on the proposed exchange **by April 5, 2024**. For current information and to submit a comment, visit: www.oregon.gov/dsl/lands/Pages/land-sales.aspx

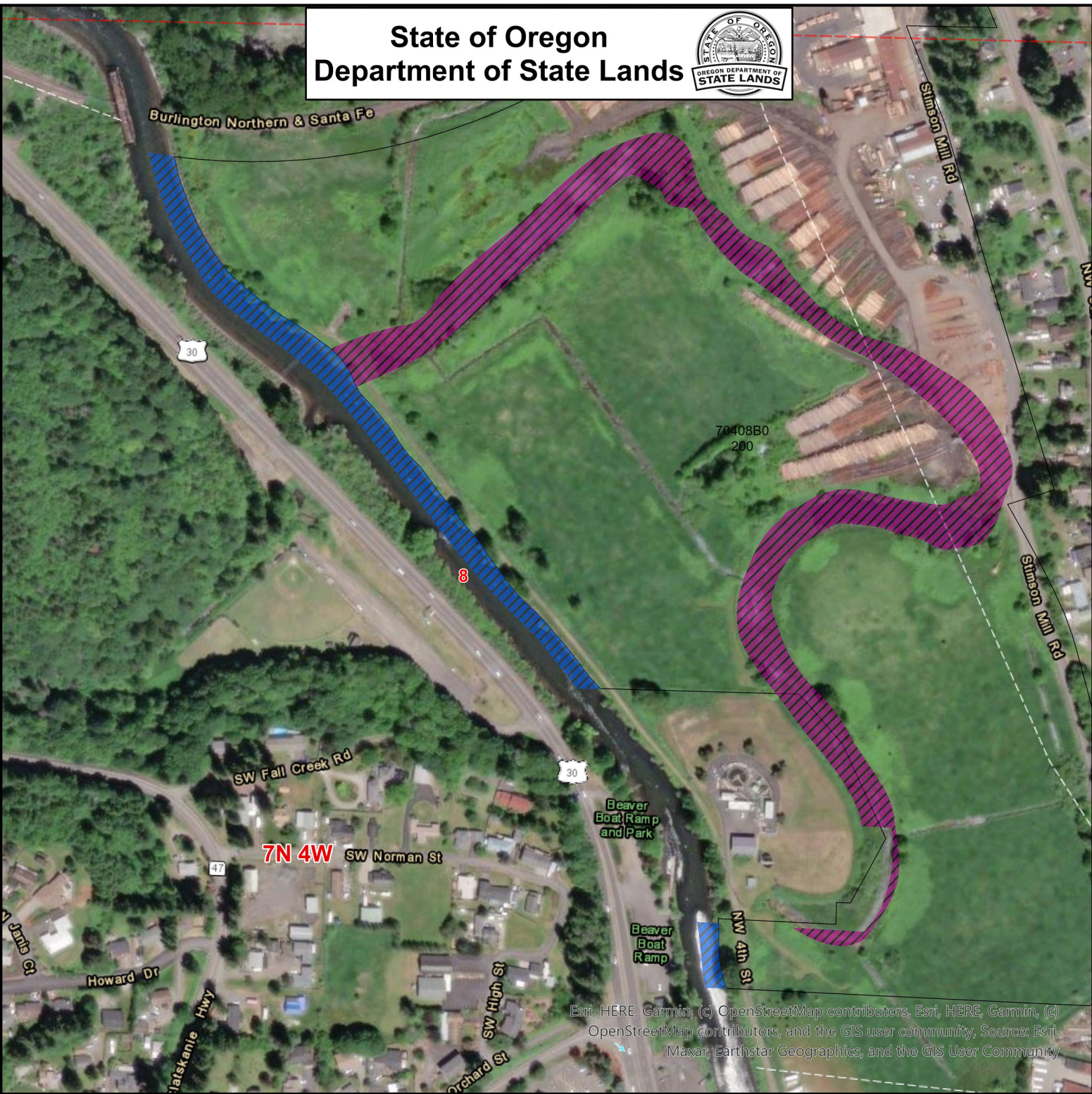
Following the public comment period, the Director will make a decision on whether to exchange the deeds or not. If you have any questions, contact us at realproperty@dsl.oregon.gov or at:

Department of State Lands
Real Property Program
951 SW Simpson Ave., Suite 104
Bend, OR 97702

About Submerged and Submersible Lands

The Department of State Lands has statutory jurisdiction over submerged and submersible lands of all navigable streams and lakes of the State of Oregon and may use and dispose of those submerged and submersible lands as provided by law. Pursuant ORS 274.915 and in accordance with OAR 141-067, the Director may issue a quitclaim deed to resolve a cloud of title over formerly submerged and submersible land. Such land may be, but is not limited to, areas that once were submerged or submersible land but are no longer connected to or a part of a state-owned (navigable) body of water. The State Land Board, by and through the Department of State Lands, is responsible for the management and disposition of these state-owned lands.

State of Oregon
Department of State Lands



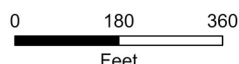
Esri, HERE, Garmin, (c) OpenStreetMap contributors, Esri, HERE, Garmin, (c) OpenStreetMap contributors, and the GIS user community, Source: Esri, Maxar, Earthstar Geographics, and the GIS User Community

EXHIBIT A

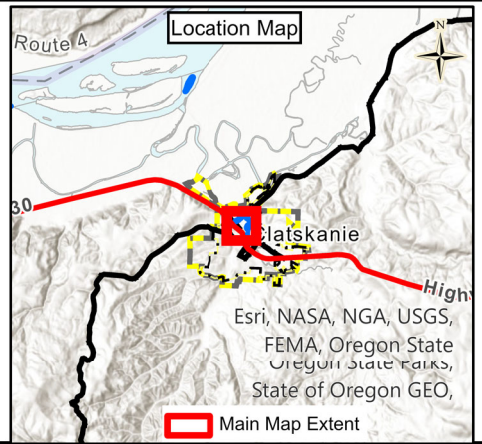
64870-LE
T07N, R04W Section 08
Columbia County

- Colu_Tax
- DSL to Stimson
- Stimpson to DSL

This map depicts the approximate location and extent of a Department of State Lands Proprietary authorization for use. This product is for informational purposes only and may not have been prepared for, or be suitable for legal, engineering, or surveying purposes. Users of this information should review or consult the primary data and information sources to ascertain the usability of the information.



Map Projection:
Oregon Statewide Lambert
Datum NAD83
International Feet
State of Oregon
Department of State Lands
775 Summer St NE, Suite 100
Salem, OR 97301
503-986-5200
www.oregon.gov/DSL
Date: 2/28/2024



Esri, NASA, NGA, USGS,
FEMA, Oregon State
Oregon State Parks,
State of Oregon GEO,
 Main Map Extent

State of Oregon
Department of State Lands



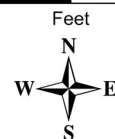
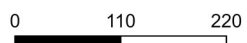
Esri, HERE, Garmin, (c) OpenStreetMap contributors, Esri, HERE, Garmin, (c) OpenStreetMap contributors, and the GIS user community, Source: Esri, Maxar, Earthstar Geographics, and the GIS User Community

EXHIBIT A

64904-LE
T07N, R04W Section 08
Columbia County

- Colu_Tax
- City of Clatskanie to DSL
- DSL to City of Clatskanie

This map depicts the approximate location and extent of a Department of State Lands Proprietary authorization for use. This product is for informational purposes only and may not have been prepared for, or be suitable for legal, engineering, or surveying purposes. Users of this information should review or consult the primary data and information sources to ascertain the usability of the information.



Map Projection:
Oregon Statewide Lambert
Datum NAD83
International Feet
State of Oregon
Department of State Lands
775 Summer St NE, Suite 100
Salem, OR 97301
503-986-5200
www.oregon.gov/DSL
Date: 2/29/2024

