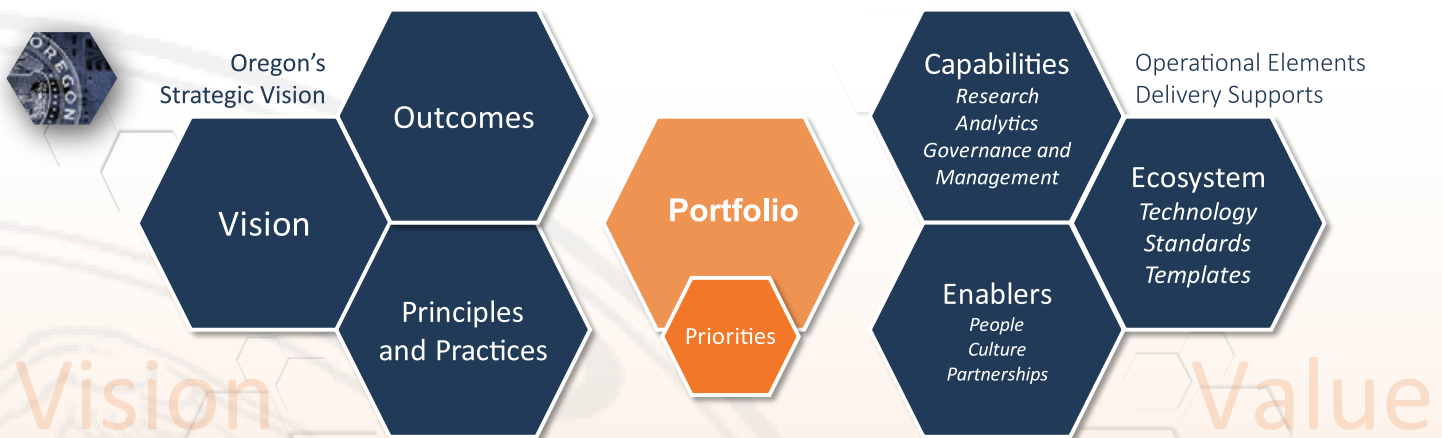




Mission: Empowering the state of Oregon to leverage data as a strategic asset and steward data effectively and ethically throughout its lifecycle to improve the lives of Oregonians.




Changing Our Approach: This biennium, the Oregon Data Strategy is shifting its focus to developing a data and analytics operating model that advances Oregon's maturity in utilizing data as a shared, strategic asset. This approach is centered around the development of a portfolio that allows us to collaborate within a Center of Excellence model and refine the capabilities, ecosystems, and enablers that are the basis for a data-informed culture.

Oregon's Data and Analytics Strategy and Operating Model: Oregon's model for success is focused on providing immediate value through work streams that are closely aligned to the Governor's strategic priorities for Oregon. These use cases will unite Oregon's strategic vision and outcomes for data with the operational tools that allow us to deliver new models for data integration, sharing, and analysis, both now and into the future.



A portfolio of work streams, projects, and initiatives that support priorities, mature our operational capacity, and deliver on our strategic vision.

PRIMARY OBJECTIVES

-  **Support Executive Priorities**
Elicit and prioritize use cases that support the Governor's Strategic Priorities and shared business outcomes.
-  **Build Data and Analytics Center of Excellence**
Establish structures that increase Oregon's capacity to deliver on data and analytics initiatives.
-  **Facilitate data sharing and access.**
Identify opportunities to improve data sharing and integration in a collaborative and strategic manner.
-  **Foster capabilities and enablers.**
Develop and nurture partnerships and people that are critical to successful and equitable delivery.
-  **Promote a data-informed culture.**
Promote activities and efforts that increase employee data literacy.

EXECUTIVE PRIORITIES

Housing & Houselessness
Behavioral Health
Education
Operational Excellence



DATA STRATEGY PILLARS

Ethical Use
Data Informed Culture
Governance and Effective Management



MEASURES OF SUCCESS

Percentage of actions started and completed within the biennium.

Number of work streams that yield or enable executive engagement or action, such as data informed policy, recommendations, or investments.



PORTFOLIO CRITERIA

Strategically Aligned - Enterprise Impacts - Advances Objectives

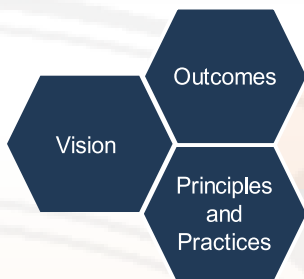




Building our Center of Excellence

Our strategy is focused on critical, shared priorities as established by Oregon's Governor. These shared priorities will be used to iteratively build out Oregon's Data and Analytics Center of Excellence, a hybrid model that is focused on refining skillsets and capabilities both through the Chief Data Officer and through agency located research, data and analytics teams.

This Center of Excellence will be established as use cases are developed to iteratively mature and explore new technologies, policies, and procedures that enable Oregon to deliver high quality data and analysis products that support our shared vision.



Utilizing a diverse portfolio to mature our data and analytics and address meaningful public sector challenges.

Vision

Portfolio

Priorities



Identify Potential Actions

Evaluate and Prioritize

Scope and Plan

Execute and Monitor

Value



Does this use case advance a strategic priority within the state?

Alignment

Housing



How can we integrate data to address housing and houselessness as a shared priority?

How do we improve demographic reporting to identify inequities in our educational systems?

Education



Enabler

Does this use case support our vision of a data-informed culture?

Does this use case mature our research, analytics, or governance?

Capability

Behavioral Health



How do we evaluate and address the core challenges impacting Oregon's behavioral health systems?

How do we evaluate our programs to ensure they are providing value to our constituents?

Operational Excellence



Ecosystem

Does this use case provide opportunities to pilot innovative technologies?



Building our Center of Excellence

The actions below represent the initial portfolio under consideration by the Chief Data Officer and the Chief Data Officer Advisory Council. As the biennium progresses, new work streams may be added and initial actions may be removed or modified depending on the identified needs and priorities of state agencies and partners.



CAPABILITIES

What we do

Analytics
Research
Governance
and Management

ENABLER

How we do it

People
Culture
Partnerships

ECOSYSTEM

The tools we use

Technology
Standards
Templates



Oregon's Initial Data Strategy Portfolio

- Advance data sharing as a program through a standardized memorandum of understanding (MOU) and data sharing process
- Build data equity and ethics capacity within agencies using a variety of means such as consultation, resources, guidance, and training.
- Develop a methodology for agencies to modernize their data infrastructure according to a replicable process for efficient integration and operational efficiency
- Evaluate opportunities to establish a statewide data trust
- Enable a “menu of services” for agencies to select data products that meet their needs while establishing interoperable standards
- Improve geospatial data sharing and coordination between public bodies
- Expand upon development of the Oregon Data Literacy Framework with further implementation guidance
- Assess current demographic reporting capabilities within State agencies and pursue recommendations for interoperable demographic reporting

