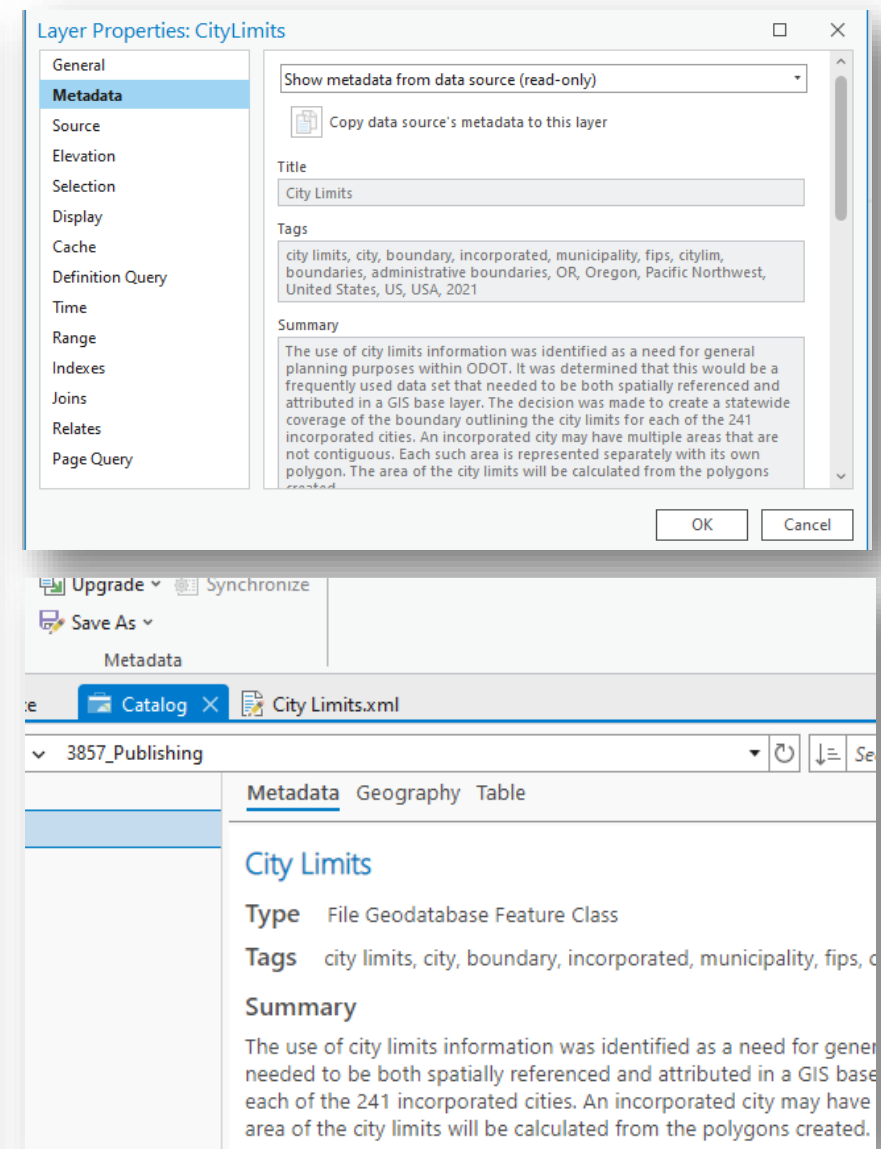
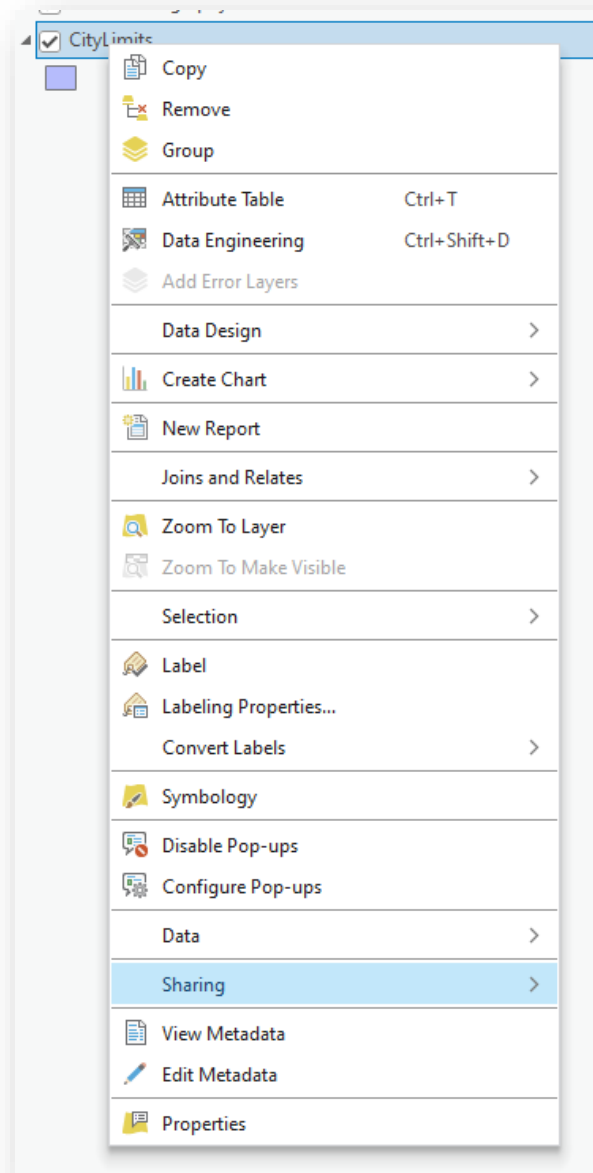
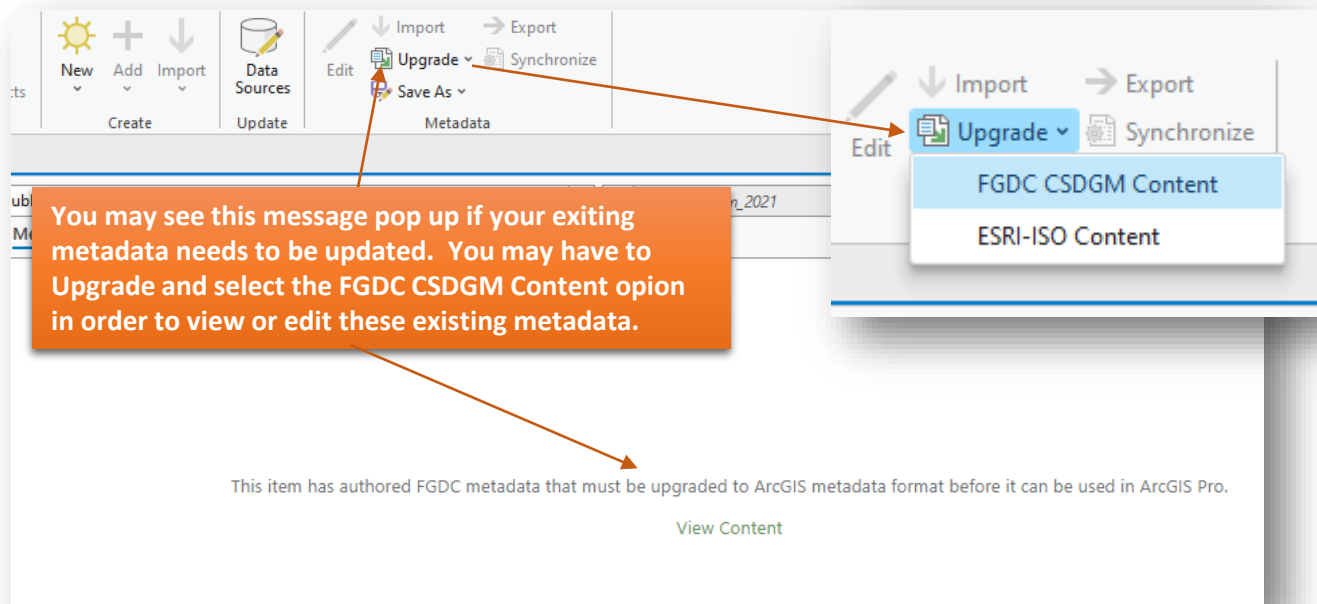


Metadata in ArcGIS Pro Resources

Many of the resources listed are how-to guides and walk the user through creating metadata from scratch, importing and editing.

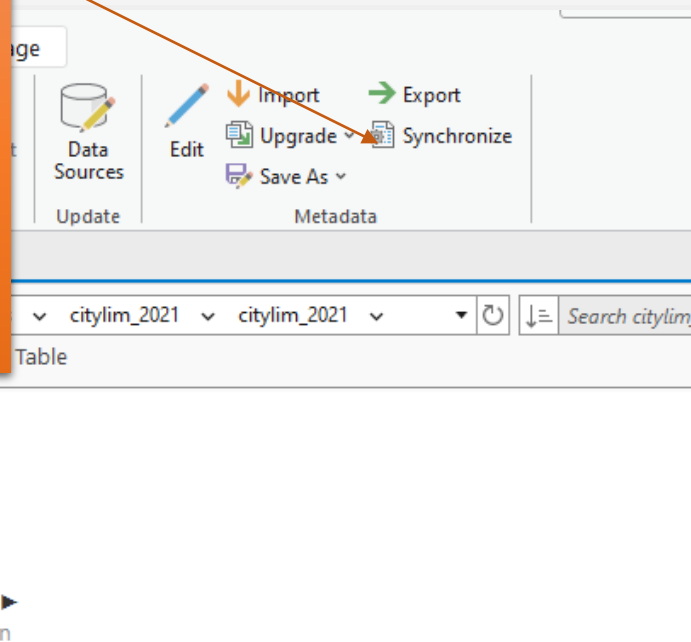
- [Creating FGDC CSDGM Metadata](#)
- [View and Edit Metadata](#)
- [Create and Manage Metadata in ArcGIS Pro](#)
- [Copy or Import Metadata to an Item](#)
- [Best Practices for Editing Metadata](#)
- [Video Exploring and Importing Metadata in ArcGIS Pro](#)
- [ArcGIS Pro Metadata for ArcGIS Online, FGDC Style, from Scratch](#)



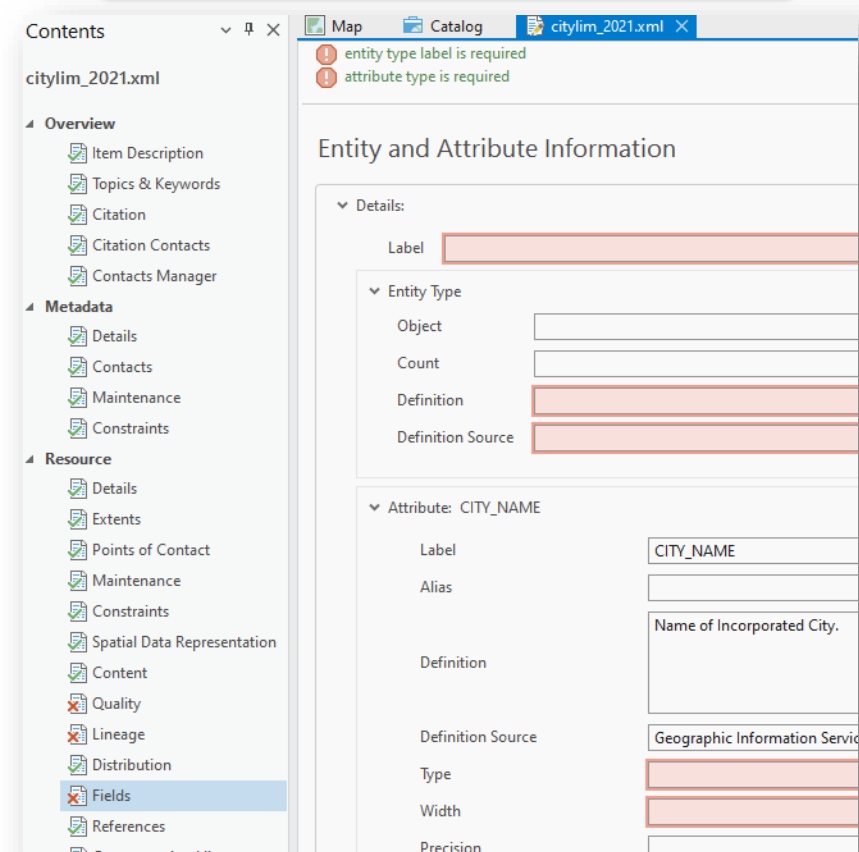


Clicking the “Synchronize” option from the Metadata menu will automatically update an ArcGIS item's metadata with the current properties of the item.

For example, if the metadata describes the item as having one projection but the item's projection has changed since the last automatic update, the old projection information in the metadata will be replaced with the new projection information.



After you Upgrade your metadata (if needed), Synchronize (if needed), you have the option to select the Edit option from the Metadata menu and this will open a new editing window where options to write directly to each section are available.



Overview

Section

Pages:

- **Item Description**
- Topics & Keywords
- Citation
- Citation Contacts
- Contacts Manager

Item Description

Title

City Limits

Field Name: Title

Element#: 8.4

XML Tag: <title>

Thumbnail

×

 Delete

📁

 Update...

Tags

city limits, city, boundary, incorporated, municipality, fips, citylim, boundaries, administrative boundaries, OR, Oregon, Pacific Northwest, United States, US, USA, 2022

Summary (Purpose)

Field Name: Purpose

Element#: 1.2.2

XML Tag: <purpose>

The use of city limits information was identified as a need for general planning purposes within ODOT. It was determined that this would be a frequently used data set that needed to be both spatially referenced and attributed in a GIS base layer. The decision was made to create a statewide coverage of the boundary outlining the city limits for each of the 241 incorporated cities. An incorporated city may have multiple areas that are not contiguous. Each such area is represented separately with its own polygon. The area of the city limits will be calculated from the polygons created.

Description (Abstract)

Field Name: Abstract

Element#: 1.2.1

XML Tag: <abstract>

This data represents the State of Oregon city limit boundaries. Each city limit is defined as a continuous area within the statutory boundary of an incorporated city, which is the smallest subdivision of an annexed area. It is represented as spatial data (polygon with label point).

Credits

Field Name: Contact Information

Element#: 10

XML Tag: <cntinfo>

Geographic Information Services Unit (GIS), Oregon Department of Transportation (ODOT)

Use Limitation

Field Name: Use Constraints

Element#: 1.8

XML Tag: <useconst>

For assessment and taxation purposes, the boundary change process has two key dates. One is the effective date of the boundary change. The other is the filing deadline with the Department of Revenue. While both of these dates relate to boundary changes, they operate independently. The two key dates are March 31 and July 1. These dates help determine the property affected by a boundary change. The district must file its boundary change documents in final approved form to the Department of Revenue Cadastral Information Systems Unit by March 31 and obtain a notice of approval. In order for a district to extend its tax rate to an annexed territory, the district's annexation must be effective on or before July 1. ORS 308.225 instructs the assessor to disregard any changes or proposed changes to the boundary lines of taxing districts for assessment and taxation purposes in the ensuing fiscal year if the change is not filed in final approved form by March 31. The March 31 date and the approval by the Department of Revenue only relates to the boundary change for assessment and taxation purposes. It does not effect or relate to filings for any other purpose. ORS 308.225 also details the level of description for the boundary change.

Overview

Section

Pages:

- Item Description
- Topics & Keywords
- Citation
- Citation Contacts
- Contacts Manager

Field Name: Place Keyword
Element#: 1.6.2.2
XML Tags: <placekey>

▼ Place Keywords

OR
Oregon
Pacific Northwest
United States
US
USA

> Thesaurus Citation

Topics and Keywords

Topic Categories

☐ Farming

☐ Biota

☒ Boundaries

☐ Atmospheric Sciences

☐ Economy

☐ Elevation

☐ Environment

☐ Geoscientific

☐ Health

☐ Imagery & Base

☐ Military & Intelligence

☐ Inland Waters

☐ Location

☐ Oceans

☐ Planning & Cadastral

☐ Society

☐ Structure

☐ Transportation

☐ Utilities & Communication


Content Type

Empty

▼ Theme Keywords

city limits
city
boundary
incorporated
municipality
fips
citylim
boundaries
administrative boundaries

Appropriate Scale Range



State
1:5,000,000

this is found at the bottom of the Item Description page in the Overview section

Field Name: W, E, N, S Bounding Coordinates
Element#: 1.5.1.1 – 1.5.1.4
XML Tags:
<westbc>
<easttbc>
<northbc>
<southbc>

Bounding Box

West

-124.807486

East

-116.419828

South

46.218776

North

41.920156

☐ Extent contains the resource

Overview Section

Pages:

- Item Description
- Topics & Keywords
- Citation
- Citation Contacts
- Contacts Manager

Field Name: Title
Element#: 8.4
XML Tags: <title>

Resource Citation

▼ Titles: City Limits

TitleCity Limits

Alternate Title

Collective Title

Presentation Form

Empty

FGDC Geospatial Data Presentation Form

Empty

+ New Identifier

ISBN

ISSN

▼ Dates

Created15

Published2022-01-011500:00:00

Revised15

▼ Edition

Edition2022

Date15

Field Name: Time Period Information
Element#: 9
XML Tags: <timeinfo>

Field Name: Publication Date
Element#: 8.2
XML Tags: <pubdate>

Field Name: Calendar Date
Element#: 9.1.1
XML Tags: <caldate>

Overview Section

Pages:

- Item Description
- Topics & Keywords
- Citation
- **Citation Contacts**
- Contacts Manager

Field Name: Originator
Element#: 8.1
XML Tags: <origin>



Field Name: Publisher
Element#: 8.8.2
XML Tags: <publish>



Resource Citation Contacts

▼ Contact: Geographic Information Services (GIS) Unit, Oregon Department of Transportation (ODOT) (Originator)

Name

Organization

Geographic Information Services (GIS) Unit, Oregon Department of Transportation (ODOT)

Position

Role

Originator

+ New Contact Information

▼ Contact: Geographic Information Services (GIS) Unit, Oregon Department of Transportation (ODOT) (Publisher)

Name

Organization

Geographic Information Services (GIS) Unit, Oregon Department of Transportation (ODOT)

Position

Role

Publisher

> Contact Information

Load a contact:

Geographic Information Services (GIS) Unit, Oregon Department of Transportation (ODOT)

+ New Contact

Metadata

Pages:

- Details
- Contacts
- Maintenance
- Constraints

Metadata Details

File Identifier

Parent Identifier

Dataset URI

Date Stamp

2022-10-12

15

Language

English

Character Set

utf8

Hierarchy Level

Dataset

+ New Hierarchy Level Name

Field Name: Metadata Date
Element#: 7.1
XML Tags: <metd>

Legal Constraints

+ New Use Limitation

Access Constraints

Empty

Use Constraints

Empty

+ New Other Constraints

Field Name: Access Constraints
Element#: 1.7
XML Tags: <acconst>

Resource

Pages:

- **Details**
- Extents
- Points of Contact
- Maintenance
- Constraints
- Spatial Data Representation
- Content
- Quality
- Lineage
- Distribution
- Fields
- References
- Geoprocessing History

Resource Details

Status

Credit

+ New Credit

Languages

Character Set

Spatial Representation Type

Scale Resolution

Distance Resolution

> Browse Graphic

+ New Browse Graphic

Processing environment

Supplemental Information

An area may be annexed into a city from an unincorporated area or from another incorporated city. Each annexation may have multiple parts, which are not necessarily contiguous. When an area is annexed from another city, this may create one or more fragments, which are subdivisions of one or more existing parts.

Field Name: Completeness Report
Element#: 2.3
XML Tags: <complete>

Resource

Pages:

- Details
- Extents
- **Points of Contact**
- Maintenance
- Constraints
- Spatial Data Representation
- Content
- Quality
- Lineage
- Distribution
- Fields
- References
- Geoprocessing History

Field Name: Contact
Information
Element#: 10
XML Tags: <cntinfo>

Field Name: Contact
Organization Primary
Element#: 10.2
XML Tags: <cntorgp>

Field Name: Point of Contact
Element#: 1.9
XML Tags: <ptcontac>

Field Name: Contact
Organization
Element#: 10.2.1
XML Tags: <cntorg>

Field Name: Contact Voice
Telephone
Element#: 10.5
XML Tags: <cntvoice>

Contacts

Contact: Geographic Information Services (GIS) Unit, Oregon Department of Transportation (ODOT) (Point of Contact)

Name	
Organization	Geographic Information Services (GIS) Unit, Oregon Department of Transportation (ODOT)
Position	
Role	Point of Contact

▼ Contact Information

Email	odotmaps@odot.oregon.gov
-------	--------------------------

+ New Online Resource

Address Type	Both
Address	555 13th St. NE, Suite #2
City	Salem
State	OR
Postal Code	97301-4178
Country	UNITED STATES

Phone	503.986.3154
Fax	503.986.4249

Instructions	Call, email, or write.
Hours	Monday through Friday, 8:00 AM to 5:00 PM.

Load a contact: Geographic Information Services (GIS) Unit, Oregon Department of Transportation (ODOT)

+ New Contact

Resource

- Pages:
- Details
 - Extents
 - Points of Contact
 - Maintenance
 - Constraints
 - Spatial Data Representation
 - Content
 - Quality
 - Lineage
 - Distribution
 - **Fields**
 - References
 - Geoprocessing History

Field Name: Attribute Label
Element#: 5.1.2.1
XML Tags: <attrlabl>

Field Name: Attribute Definition
Element#: 5.1.2.2
XML Tags: <attrdefl>

▼ Attribute: CITY_NAME

Label	CITY_NAME
Alias	
Definition	Name of Incorporated City.
Definition Source	Geographic Information Services (GIS) Unit, Oregon Department of Transportation (ODOT), Oregon Transportation Management

Field Name: Entity and Attribute Overview
Element#: 5.2.1
XML Tags: <eaover>

Entity and Attribute Information

> Details:

+ New Entity and Attributes Details

▼ Overview Description

Summary

citylim contains CITY_NAME, instName, unitID, descriptn, instCode, codeRef, effDate, unitOwner, cSteward, acres, EFFECTV_DT, GIS_PRC_DT, Shape

Citation

Resource

Pages:

- Details
- Extents
- Points of Contact
- Maintenance
- Constraints
- **Spatial Data Representation**
- Content
- Quality
- Lineage
- Distribution
- Fields
- References
- Geoprocessing History


Try to find the best fit for these elements in the Spatial Representation sections. They do not fit exactly, but adding relevant information would be best. Hitting the "Synchronize" button from the Metadata Editor will auto-populate.

Spatial Representation Information


- Grid Spatial Representation
- Georectified Representation
- Georeferenceable Representation
- Vector Representation
- Indirect Spatial Representation

2.4.1.1	Horizontal Positional Accuracy Report	free text	<horizpar>
4.1.1.3	Geographic Coordinate Units	Decimal degrees, "Decimal minutes", "Decimal seconds", "Degrees and decimal minutes", "Degrees_minutes_and decimal seconds", "Radians", "Grads"	<geogunit>
4.1.2.1.1	Map Projection Name	Albers Conical Equal Area, "Azimuthal Equidistant", "Equidistant Conic", "Equirectangular", "General Vertical Near-sided Projection", "Gnomonic", "Lambert Azimuthal Equal Area", "Lambert Conformal Conic", "Mercator", "Modified Stereographic for Alaska", "Miller Cylindrical", "Oblique Mercator", "Orthographic", "Polar Stereographic", "Polyconic", "Robinson", "Sinusoidal", "Space Oblique Mercator", "Stereographic", "Transverse Mercator", "van der Grinten", free text	<maprojn>
4.1.2.1.23.2	Longitude of Central Meridian	Neg. 180.0 <= Longitude of Central Meridian < 180.0	<longcm>
4.1.2.1.23.3	Latitude of Projection Origin	Neg. 90.0 <= Latitude of Projection Origin <= 90.0	<latprjo>
4.1.2.1.23.4	False Easting	free real	<feast>
4.1.2.1.23.5	False Northing	free real	<fnorth>
4.1.4.1	Horizontal Datum Name	free text, "North American Datum of 1927", "North American Datum of 1983"	<horizdn>
4.1.4.2	Ellipsoid Name	free text, "Clarke 1866", "Geodetic Reference System 80"	<ellips>
4.1.4.3	Semi-major Axis	Semi-major Axis > 0.0	<semiaxis>
4.1.4.4	Denominator of Flattening Ratio	Denominator of Flattening > 0.0	<denflat>

Working with Metadata in ArcGIS Online

City Limits 


OverviewDataVisualizationUsageSettings




Edit thumbnail


Add to Favorites


The use of city limits information was identified as a need for general planning purposes within ODOT. It was determined that this would be a frequently used data set that needed to be both spatially referenced and attributed in a GIS base layer. The decision was made to create a statewide coverage of the boundary outlining the city limits for each of the 241 incorporated cities. An incorporated city may have multiple areas that are not contiguous. Each such area is represented separately with its own polygon. The area of the city limits will be calculated from the polygons created.

 Feature layer from [State of Oregon](#)
Managed by [OR_FRAMEWORK](#)

Item created: Oct 3, 2023 Item updated: Oct 3, 2023


 Authoritative

 Edit


 Edit

Open in Map Viewer

Open in Scene Viewer

Open in ArcGIS Desktop 


Share

Metadata 


Description

This data represents the State of Oregon city limit boundaries. Each city limit is defined as a continuous area within the statutory boundary of an incorporated city, which is the smallest subdivision of an annexed area. It is represented as spatial data (polygon with label point).

Item Information



LowHigh

 Learn more

Click the "Metadata" button to open the Metadata Editor

Working with Metadata in ArcGIS Online

The screenshot shows the ArcGIS Online Metadata Editor interface. The main window is titled "Metadata Editor" and has two tabs: "Essential metadata" (selected) and "All metadata". The left sidebar contains an "About 'Essential metadata'" section and an "Errors: 6" section with a "Scroll to section" list. The main content area is titled "Essential metadata" and contains sections for "Item Description", "Summary (Purpose)*", "Thumbnail", and "Description (Abstract)*". The "Item Description" section has a "Title*" field with the value "City Limits" and a "Summary (Purpose)*" field with a text area containing "The use of city limits information was identified as a need for general planning purposes within ODOT. It was determined that this would be a frequently used data set that needed to be both spatially referenced". The "Thumbnail" section has a placeholder image and an "Edit thumbnail" button. The "Description (Abstract)*" section has a rich text editor with various formatting options. On the right side, there is a "Required elements" section with a progress bar and a list of required elements. A dropdown menu is open, showing options: "View XML", "View HTML", "Download", "Overwrite", and "Reset". An arrow points from the "More options" menu icon to the dropdown menu. Another arrow points from the "Overwrite" option to a text box.

Metadata Editor

Essential metadata All metadata

About "Essential metadata"

The metadata elements on this page are either required by the active metadata style or suggested by your organization.

Errors: 6

Scroll to section

- Published
- Instant Date
- Medium Name
- Publication Date
- Medium Name
- Value Measurement Frequency

Essential metadata

Item Description

Title*

City Limits

Required. A clear title conveys the topic, location, and date when relevant. 245 remaining characters left.

Summary (Purpose)*

The use of city limits information was identified as a need for general planning purposes within ODOT. It was determined that this would be a frequently used data set that needed to be both spatially referenced

Required. A short yet descriptive summary displays when content is shared. Include keywords different from those in your title to increase discoverability. 1459 remaining characters left.

Thumbnail

Edit thumbnail

Suggested. Show what your content is about. The standard thumbnail size is 600 x 400 px.

Description (Abstract)*

Required elements

Completed: 70

Scroll to section

- Title
- Item Description
- Summary (Purpose)
- Item Description
- Description (Abstract)
- Item Description
- Topic Category(s)
- Item Description
- Use Limitation
- Legal Constraints
- Use Limitation
- Legal Constraints
- Use Limitation
- Legal Constraints
- Bounding Box
- Geographic Extent
- Theme Keywords
- Theme Keywords
- Title
- Thesaurus Title
- Publication Date
- Thesaurus Dates

View XML

View HTML

Download

Overwrite

Reset

There are several options to edit, replace or download your metadata in the Editor window