

# Oregon Geographic Information Council

Meeting Date: **July 30, 2025**  
Time: **1:00pm to 3:00pm**  
Location: **Microsoft Teams Meeting**



OGIC Chair: Chris Wright  
OGIC Chair-Elect: Dan Brown

OGIC Members					
*House Rep. - vacant		Patti Sauers	x	Traci Naile	x
*Senate Rep. - vacant		Tom Rohlifing	x	Dan Brown	x
Margarite Becenti	x	Lisa Gaines	--	Madeline Steele	x
Brad Cross	x	Molly Gartrell Earle	x	Matt Oglesby	x
Josh Tanner	x	Shad Campbell	x	Shivon Van Allen	x
--	--	Brent Grimsrud	x		
Chris Wright	x	Ned Fairchild	x	Fed. Govt - vacant	
Jake Rosenbalm	x	Ed Flick	x	Non-profit – vacant	

\* denotes a non-voting member by statute. (ORS 276A.503)

Guests: Erik Brewster, Melissa Foltz, Lauren Saracene, Eric Ingbar, Ian Von Essen

*The OGIC meeting was recorded, and the audio/video is available on the [OGIC web page](#). Minutes document a summary of the agenda item; action items and decisions made at the meeting.*

## Agenda Items

### OGIC Roll Call

Chair Chris Wright called the meeting to order with the roll call. The attendance of OGIC members marked above for the record.

## Agenda Items

### Item 1: Consent Agenda and Agenda Approval

- TAC and GPL Reports
- Draft April Meeting Minutes

**Action: Motion to approve minutes and consent agenda made by Tom Rohlffing; seconded by Molly Gartrell Earle.**

**Motion passed.**

Vote on Minutes and Consent Agenda – mark Y, N, or O for each person present					
*House Rep. - vacant	--	Patti Sauers	Y	Traci Naile	Y
*Senate Rep. - vacant	--	Tom Rohlffing	Y	Dan Brown	Y
Margarite Becenti	Y	Lisa Gaines	--	Madeline Steele	Y
Brad Cross	Y	Molly Gartrell Earle	Y	Matt Oglesby	Y
Josh Tanner	Y	Shad Campbell	Y	Shivon Van Allen	Y
--	--	Brent Grimsrud	Y		
Chris Wright	Y	Ned Fairchild	Y	Fed. Govt - vacant	
Jake Rosenbalm	Y	Ed Flick	Y	Non-profit – vacant	

### Item 2: Enterprise Information Services Updates

- Update on Geographic Information Officer (GIO) recruitment
- Update on Chief Data Officer (CDO) recruitment
- Legislative Session Outcomes
  - Imagery Policy Option Package (POP)

Erik Brewster, EIS Data Governance and Transparency, Data and Operations Coordinator, provided updates on the GIO and CDO recruitments. The GIO recruitment is continuing to progress. Second round interviews were completed, JoLene Swint, EIS Chief Operating Officer and hiring manager for the GIO role, is working with human resources and expects a decision to move forward with the GIO role by August 1<sup>st</sup>, 2025.

The CDO recruitment has recently closed. The recruitment received over 40 applicants and EIS is in the beginning phases of review resumes. Erik estimated that it would likely be September or October as the earliest possibility for a new Oregon CDO.

Erik also shared that the imagery POP for 2025-2027 was successfully funded for \$1.7M. EIS expects to have more information on the budget in October. Erik also notes that discussions

## Agenda Items

regarding the Long-Term Funding Strategy are happening internally, and EIS plans to present the Long-Term Funding Strategy during Legislative Days fall of 2025.

### Item 3: Long-Term Funding Strategy for Oregon Statewide Imagery Program

- Presentation from Sanborn, slides attached.

Lauren Saracene, Sanborn Project Manager, Ian Von Essen, Sanborn Public Sector Lead Consultant, Eric Ingbar Sanborn Business Analyst, presented to OGIC on the Long-Term Funding strategy.

Shad Campbell inquired about state programs offering buy-up options; Sanborn consultants cited Indiana and Wyoming as examples. Chris Wright requested clarification on the distinction between settled and unsettled areas; Sanborn noted that Oregon Parks and Recreation provided a density map based on building footprints, but the final definitions will be determined by the state.

Chris also asked about the cost structure for current, improved, and optimal tiers; Sanborn stated that estimates were based on past flights and data from their Aerial Mapping Division. Dan Brown asked about shifting flight frequency from biennial to annual and the feasibility of a collective buy-up. Sanborn responded that while flight costs would be the primary driver of increased expense, hosting fees would rise incrementally. A collective funding model could be explored but presents logistical challenges.

Dan also asked about derivative products and the applicability of AI; Sanborn explained that the Optimal tier offers higher resolution, which enhances machine learning capabilities and supports better derivative products. Oblique imagery was noted as particularly beneficial for enhanced outputs.

Madeline Steele asked whether licensing fees were included; Sanborn confirmed Oregon's imagery would be publicly available. She also asked about other state imagery programs; Sanborn clarified that most states do have such programs, and the report included only a representative sample.

### Item 4: Outreach and Legislative Committee Updates

- Outreach and Communications Committee
- Legislative Committee

No notable updates were shared as the outreach and legislative committees have been in a holding pattern awaiting GIO recruitment.

### Item 5: Data Sharing Committee Update

- Update on Framework Consultation and Data Sharing Process

Melissa Foltz provided an update on the Data Sharing and Governance Committee. While the Data Sharing Committee has not convened since April, work has continued with the Public Body Data Sharing process. Three agencies (Oregon Department of Fish and Wildlife, Oregon

## Agenda Items

Department of Transportation, and Oregon State Fire Marshall's Office) have completed consultation. These agencies account for 18 data elements in the Framework Inventory.

Melissa asks OGIC for a motion to designate the 18 completed data elements for sharing.

Tom Rohlifing expressed the importance of OGIC focusing on a statewide tax lot layer and requested OGIC consider a subgroup dedicated to tax lots. Chris Wright suggested further conversations prior to establishing a subgroup. The decision was made to discuss the topic in a meeting including both the Executive and Data Sharing and Governance Committees.

**Action: Motion to designate all the data elements that have completed consultation for public body data sharing made by Shad Campbell; seconded by Tom Rohlifing.**

**Motion passed.**

Vote on Public Body Data Sharing – mark Y, N, or O for each person present					
*House Rep. - vacant	--	Patti Sauers	Y	Traci Naile	Y
*Senate Rep. - vacant	--	Tom Rohlifing	Y	Dan Brown	Y
Margarite Becenti	Y	Lisa Gaines	--	Madeline Steele	Y
Brad Cross	Y	Molly Gartrell Earle	Y	Matt Oglesby	Y
Josh Tanner	Y	Shad Campbell	Y	Shivon Van Allen	Y
--	--	Brent Grimsrud	Y		
Chris Wright	Y	Ned Fairchild	Y	Fed. Govt - vacant	
Jake Rosenbalm	Y	Ed Flick	Y	Non-profit – vacant	

## Item 6: Council Business

- Membership Updates
- Upcoming Membership Terms Ending

Melissa updated OGIC with the concern that nine (9) members' terms will be expiring at the end of the year. Four (4) members are currently serving their second term. Although the OGIC Charter allows for a third term, the Governors Boards and Commissions expectations for service limits council members to two terms. Members interested in serving another term were directed to fill out the board members' application to express interest. Final membership decisions will be made by the Governor's Office.

Chris Wright and Molly Earle asked that members assess their interest and capacity for serving another term. Josh Tanner inquired about specific eligibility requirements for representing

Agenda Items
<p>members. Melissa indicated she would follow up with the council via email if there are specific eligibility requirements.</p>
<p>Melissa shared that onboarding news members would need to become a priority at the start of 2026 and would also be a good time to refresh if existing members are interested.</p>
<p><b>Item 7: Public Comment</b></p> <p>No public comment.</p>
<p><b>Adjourn</b></p> <p>Meeting adjourned at 2:42.</p>

**Next Meeting Date: October 29, 2025 (In-Person Meeting, Location TBD)**

For more information contact [melissa.foltz@das.oregon.gov](mailto:melissa.foltz@das.oregon.gov) or 971-375-6986.



# Statewide Aerial Imagery Program Long-Term Funding Strategy

Oregon Geographic Information Council

Quarterly Meeting - July 30, 2025

# Project Team Introductions

MELISSA FOLTZ  
Geospatial Data  
Governance Coordinator  
Oregon EIS



LAUREN SARACENE  
Sr. Project Manager,  
Sanborn



Erik Brewster  
Data & Operations Coordinator Oregon Parks and Recreation  
Oregon GEO



BRADY CALLAHAN  
Imagery FIT Chair



ERIC INGBAR  
Business Analyst,  
Sanborn



IAN VON ESSEN  
Public Sector Lead,  
Sanborn Consultant



# Executive Summary Recap

---

- Outlined Oregon's history and success with a statewide program
  - 2017/2018 – Collaborative Funding (Oregon Contract)
  - 2020 – *no OSIP Project*
  - 2022 – Collaborative Funding (NAIP Contract)
  - 2024 – Legislative Funding (Oregon Contract)
- Financial obstacles with each acquisition cycle
- Research based on assessment of past programs and current user needs
  - Survey
  - Workshop
  - Interviews
  - State program comparisons



# Statewide Program Service Tiers

Item	Description	Optimal	Improved	Current
Settled Areas	Aerial imagery coverage within settled areas	3" GSD orthoimagery; 3" GSD oblique images	6" GSD orthoimagery; 6" GSD oblique images	12" GSD orthoimagery, no oblique images
Outside of Settled Areas	Aerial imagery coverage outside settled areas	6" GSD orthoimagery	12" GSD orthoimagery	12" GSD orthoimagery
Annual cost	Assumes a 2-year cycle	\$7,875,250	\$3,501,625	\$1,573,500

Optimal Service Tier = greatest benefit to taxpayers



## Why the 'Optimal Tier?'

---

Satisfies functional needs across Government and Industry

- Meets or exceeds known use cases

Includes Obliques Imagery and High Resolution Orthoimagery in settled areas

- Responds to Assessor user needs

Maximizes known spend on imagery throughout the state; minimizes duplicative data

- Achieves a greater quality and consistency throughout the state



# Why the 'Optimal Tier?'

## Known Uses

Functional need	Optimal Tier	Improved Tier	Current Tier
Air quality monitoring	✓	✓	✓
Assessing property value	✓	✓	✗
Disaster recovery	✓	✓	✗
Economic development	✓	✓	✗
Emergency management	✓	✓	✗
Forestry and forest management	✓	✓	✓
Law enforcement	✓	✓	✓
Long-term planning	✓	✓	✓
Near-term planning	✓	✓	✓
Public health	✓	✓	✓
Public safety (fire and police actions)	✓	✓	✗
Site selection	✓	✓	✗
Transportation infrastructure	✓	✗	✗
Utility infrastructure (power, water, sewer)	✓	✗	✗



# Why the 'Optimal Tier?'

## Known Uses

<i>Optimal Tier</i>	<i>Enhanced Tier</i>	<i>Current Tier</i>
<b>Functional need</b> <ul style="list-style-type: none"><li>• Air quality monitoring</li><li>• Property assessment (IAAO)</li><li>• Disaster recovery</li><li>• Economic development</li><li>• Emergency management</li><li>• Forestry and forest management</li><li>• Law enforcement</li><li>• Long-term planning</li><li>• Near-term planning</li><li>• Public health</li><li>• Public safety (fire and police actions)</li><li>• Site selection</li><li>• Transportation infrastructure</li><li>• Utility infrastructure (power, water, sewer)</li></ul>	<b>Functional need</b> <ul style="list-style-type: none"><li>• Air quality monitoring</li><li>• Property assessment (IAAO)</li><li>• Disaster recovery</li><li>• Economic development</li><li>• Emergency management</li><li>• Forestry and forest management</li><li>• Law enforcement</li><li>• Long-term planning</li><li>• Near-term planning</li><li>• Public health</li><li>• Public safety (fire and police actions)</li><li>• Site selection</li><li>• Transportation infrastructure</li><li>• Utility infrastructure (power, water, sewer)</li></ul>	<b>Functional need</b> <ul style="list-style-type: none"><li>• Air quality monitoring</li><li>• Property assessment</li><li>• Disaster recovery</li><li>• Economic development</li><li>• Emergency management</li><li>• Forestry and forest management</li><li>• Law enforcement</li><li>• Long-term planning</li><li>• Near-term planning</li><li>• Public health</li><li>• Public safety (fire and police actions)</li><li>• Site selection</li><li>• Transportation infrastructure</li><li>• Utility infrastructure (power, water, sewer)</li></ul>



# Why the 'Optimal Tier?'

*Confirmed\**  
Combined Annual  
Spend...

*\*Based on responses and accessible data - additional public dollars are likely unaccounted for and would increase this amount*

Organization Type	Organization Name	Annual Imagery Costs	Imagery Cycle	Oblique cost	
Cities	Astoria	\$20,000	Annual		
Cities	Eugene	\$15,000	Annual	Included	
Total City Spend					\$35,000
County	Douglas County	\$22,000	Annual	Included	
County	Clackamas County	\$283,000	Annual	Included	
County	Benton County	\$16,667	3 year		
County	Yamhill County	\$75,000	Annual	Included	
County	Wasco County	\$100,000	2 year	Included	
County	Deschutes County	\$10,000	3 year		
County	Jackson County	\$5,000	Annual	\$40,000	
County	Polk county	\$10,000	As Needed		
County	Lincoln County	\$30,000	2 year		
Total County Spend					\$591,667
COG	Lane Council of Governments	\$94,000	2 year	Included	
Regional	Metro + Regional Aerial Photo Consortium	\$150,000	Annual		
Metro	GIG 12-PDX Metro			\$46,667	
Total Regional Spend					\$290,667
State	Oregon Parks and Rec Dept	\$30,000	2 year	\$7,500	
State	Oregon Dept. of Geology and Mineral Industries	\$17,500	Annual		
Total State Spend					\$55,000
Federal	USDI Bureau of Land Management	\$150,000	2 year		
Private	Geology and Forestry	\$40,000	2 year	\$50,000	
Total Federal and Private Spend					\$240,000

**Total Known Annual Imagery Costs \$1,212,334**

# Tiers - Details

---

- A **multi-year contract** - created through the competitive bid process
- **2-year flight cycle** - consistent with OSIP's current acquisition cycle
- **Designated funding** included for:
  - An **Aerial Imagery Program Manager**
  - **IT support** to host and serve imagery
  - **Hosting cost** (hardware, software, data storage, and network needs)
  - Independent **QA/QC**
- **Buy-up Options** - contract specs include preset pricing for enhanced or out-of-cycle products

These tasks and responsibilities have been performed without financial support in the past



# Service Tiers - Details

---

Item	Description	Optimal	Improved	Current
Settled Areas	Aerial imagery coverage within settled areas	3" GSD orthoimagery; 3" GSD oblique images	6" GSD orthoimagery; 6" GSD oblique images	12" GSD orthoimagery, no oblique images
Outside of Settled Areas	Aerial imagery coverage outside settled areas	6" GSD orthoimagery	12" GSD orthoimagery	12" GSD orthoimagery
Annual cost	Assumes a 2-year cycle	\$7,875,250	\$3,501,625	\$1,573,500

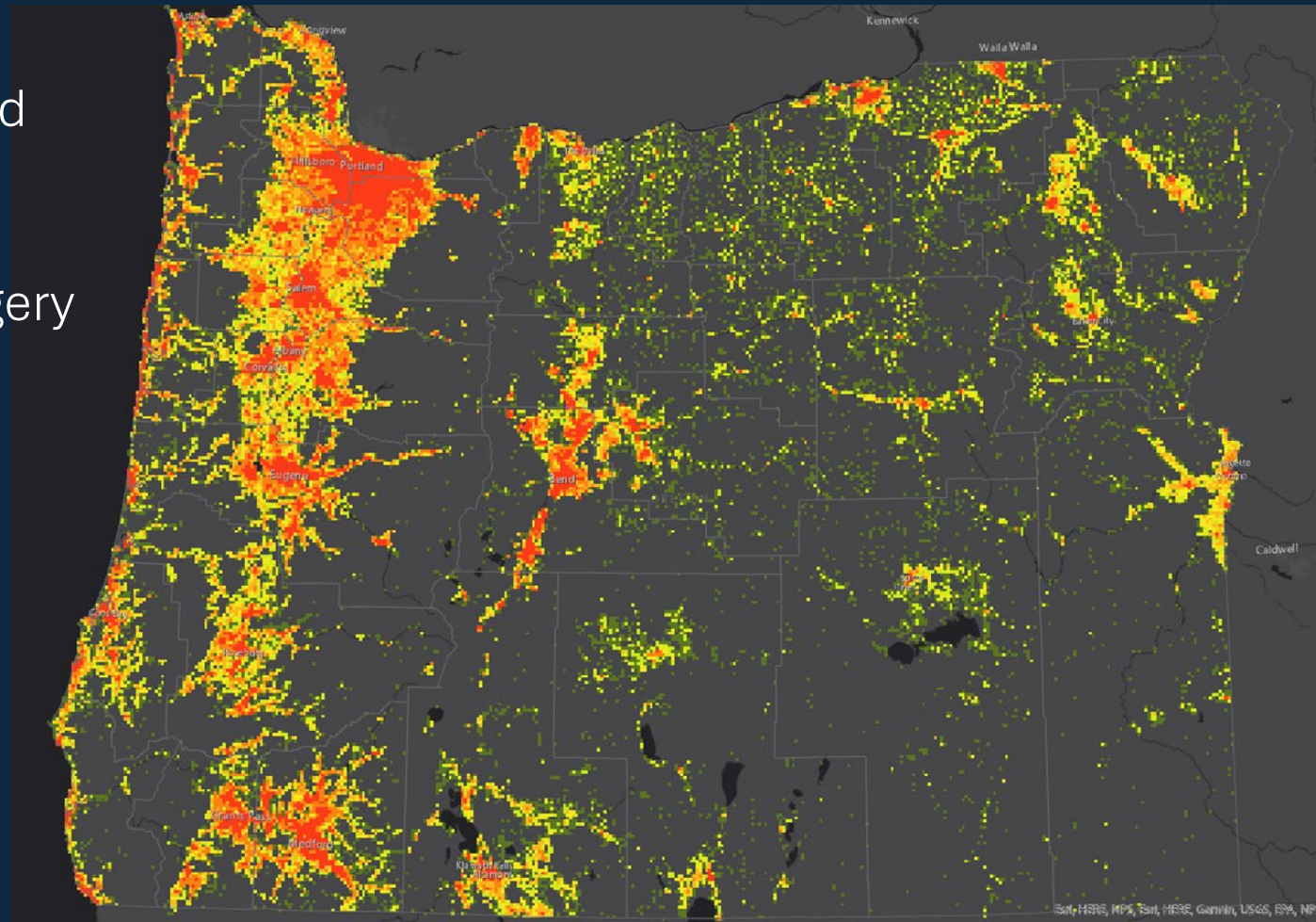


# Optimal Tier - Details

Acquisition approach considers density to determine imagery type:

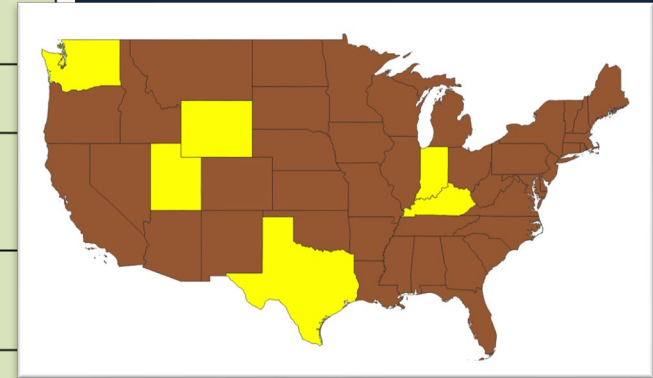
- **Settled** = high-resolution ortho and oblique imagery
- **Less densely settled** = lower-resolution ortho and oblique imagery
- **Rural areas** = lower-resolution orthoimagery (no oblique)

Structure Density Map –  
illustrates concept around  
imagery details, as related to  
population and development



# Other Statewide Programs

	Washington	Utah	Texas	Indiana	Wyoming	Kentucky
Ortho	6-inch (Streaming)	6-inch	6-inch	6-inch	2 Foot	3-inch
	12-inch (Archived)				6-inch & 2-inch (settled areas, ~12%)	
Oblique	No	No	No	No	6-inch & 2-inch (settled areas ~12%)	3-inch
Licensing	Licensed (Hexagon)	Licensed (Hexagon, older Google)	Licensed (Hexagon)	State-owned	Licensed (Eagleview subscription with affiliate access)	State-owned
Frequency	Every 2-years (Dependent on NAIP)	Every 3-years (Hexagon; Google archived)	Every 2-years	Every 4-years (1/3 each year, buy- up year)	Every 2-years	Every 2-years (proposed)
Annual Cost	~\$400,000	\$400,000 (seeking +\$150k due to cost increase for inflation)	\$1,450,000	\$666,666	\$1,000,000 Note: 12% of state by area	\$8,500,000
Cost Breakdown	~\$800,000	\$1,200,000	\$5,818,209.54	\$2,000,000	\$2,000,000	\$17,000,000
	Over a two-year contract Statewide 1ft imagery updated every 2 years	(over a three-year contract)	(Over a four- year contract period)	(Over a three-year period (FY21-FY24) (Fourth year is buy- up options)	(over a two-year cycle)	(over a two-year period)
Cost Sharing Approach	Subscription Based Coalition Funded	State-funded program (legislative funding)	Subscription Based (on usage, tracked monthly)	State-funded program (legislative funding)	State-funded program (legislative funding)	State-funded program (single 2-year cycle)
Major Funding Sources	WA State Departments, Tribal Governments, Cities & Counties	Legislature (100%)	DOT, 911, General Land Office, City/Local Government, University	Legislature (100%) (Excluding Buy-ups)	Legislature (100%) (via Dept. of Revenue) (Excluding Buy-ups)	Legislature (via specific appropriation)
Area (Square Miles)	71,362	84,896	268,596	36,419	97,914	40,407
Cost (per Square Miles)	\$11	\$12	\$22	\$55	\$218 (Includes obliques)	\$421 (Includes obliques)
Includes Administrative Costs	No	No	No	No	No	No



**Key Take-away:**  
Many states fund imagery consistently as part of the regular state budget



# Questions?



*thank you*

For additional questions or comments please contact:

**Lauren Saracene**

Sr. Project Manager | AppGeo Division

The Sanborn Map Company Inc.

[lsaracene@sanborn.com](mailto:lsaracene@sanborn.com)

Mobile: (435) 640-8869

