



Joint EIS/LFO Stage Gate Oversight – Functional Reference Model (v2.0)



Office of the Governor
 Direction & Oversight
 Chief Financial Office
 Budget Development & Oversight

Chief Operating Office
 Enterprise Direction
 Enterprise Leadership Team
 Unified Vision & Oversight

Legislature
 Direction & Oversight
 Chief Human Resource Office
 Resource Development & Oversight

Enterprise Information Services

Cyber Security Services

Data Center Services

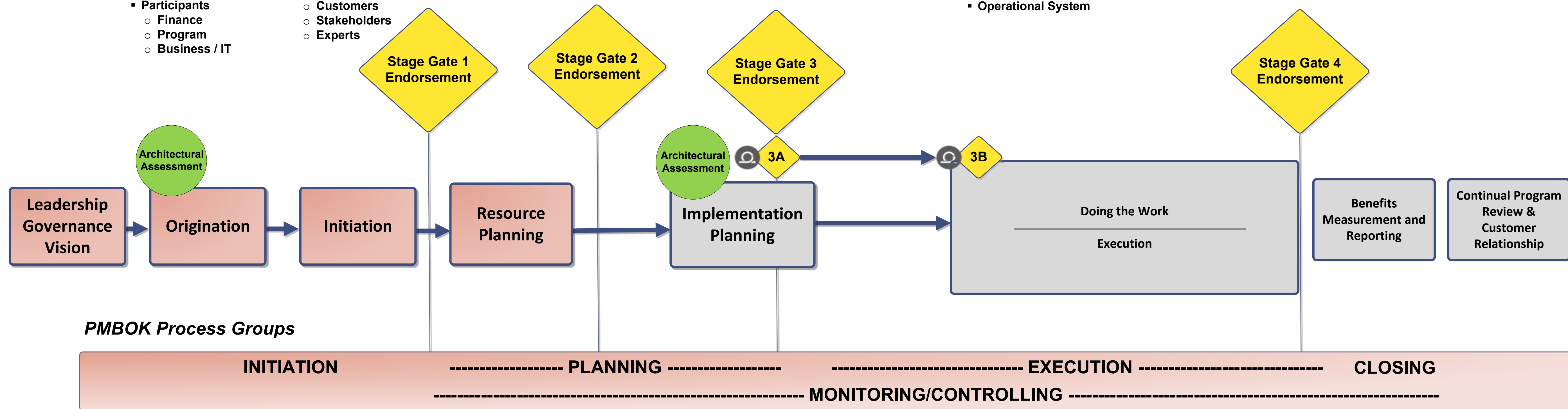
Data Governance & Transparency

Project Portfolio Performance

Shared Services

Strategy and Design

- ❑ **Idea**
 - Tied to Strategy
 - Problem/Criteria for Solution
 - Budget Concept
- ❑ **Core Team**
 - Executive Sponsor
 - Project Charter
 - High-level Scope
 - Goals & Objectives
 - Benefits Identification
 - Participants
 - Finance
 - Program
 - Business / IT
- ❑ **Plan**
 - Timeframe
 - Activities
 - Tech. Req.
 - Arch. Req.
 - Communicate
 - Customers
 - Stakeholders
 - Experts
- ❑ **EIS/LFO Review**
 - Conditions
 - \$ for Bus. Case
- ❑ **EIS/LFO Review**
 - Further Conditions
 - \$ for Detailed Plan
 - Quality Assurance
 - 50% Vision
- ❑ **EIS/LFO Review**
 - "Go" for Execution
 - Budget to Execute
 - Acceptable Risk
 - Acceptable Quality
 - 90% Vision
- ❑ **Specifications**
 - Hardware / Comm.
 - Executable Software
 - Developed & Tested
 - Outcomes to Req.
 - User Acceptance
 - Operational System
- ❑ **EIS/LFO Review**
 - Product Acceptance
 - Benefits Realization
- ❑ **Operations**
 - Operate, Maintain, & Enhance
 - System Performs as Designed
 - Periodically Assess Operations



🔄 Agile: Depending on an agency's agile maturity, agile or hybrid projects may receive incremental Stage Gate 3A endorsement to embark on initial delivery and then subsequent Stage Gate 3B endorsement to complete the remainder of the project

Artifacts expected for each Stage Gate are available on the EIS-P3 Guidance and Forms web page
<https://www.oregon.gov/eis/project-portfolio-performance/Pages/guidance-and-forms.aspx>

Enterprise Information Technology Governance

Project & Portfolio Management | Business Analysis | Oversight

Public Safety
Policy Area

Healthy People
Policy Area

Natural Resources
Policy Area

Education
Policy Area

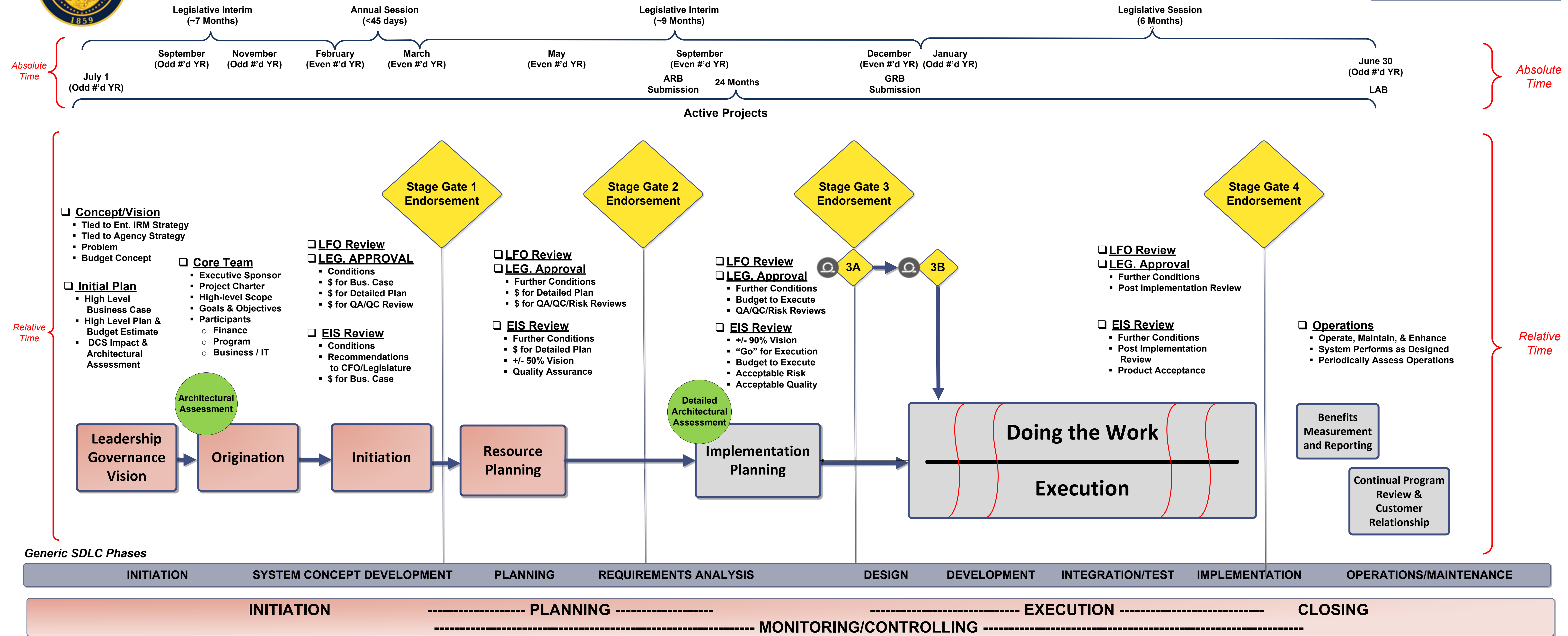
Transportation & Economic Development
Policy Area

Administration & Business Services
Policy Area



Joint EIS/LFO Stage Gate Review Process

Scenario 1 – Active Projects (v2.0)



PMBOK Process Groups

Agile: Depending on an agency's agile maturity, agile or hybrid projects may receive incremental Stage Gate 3A endorsement to embark on initial delivery and then subsequent Stage Gate 3B endorsement to complete the remainder of the project

Artifacts expected for each Stage Gate are available on the EIS-P3 Guidance and Forms web page

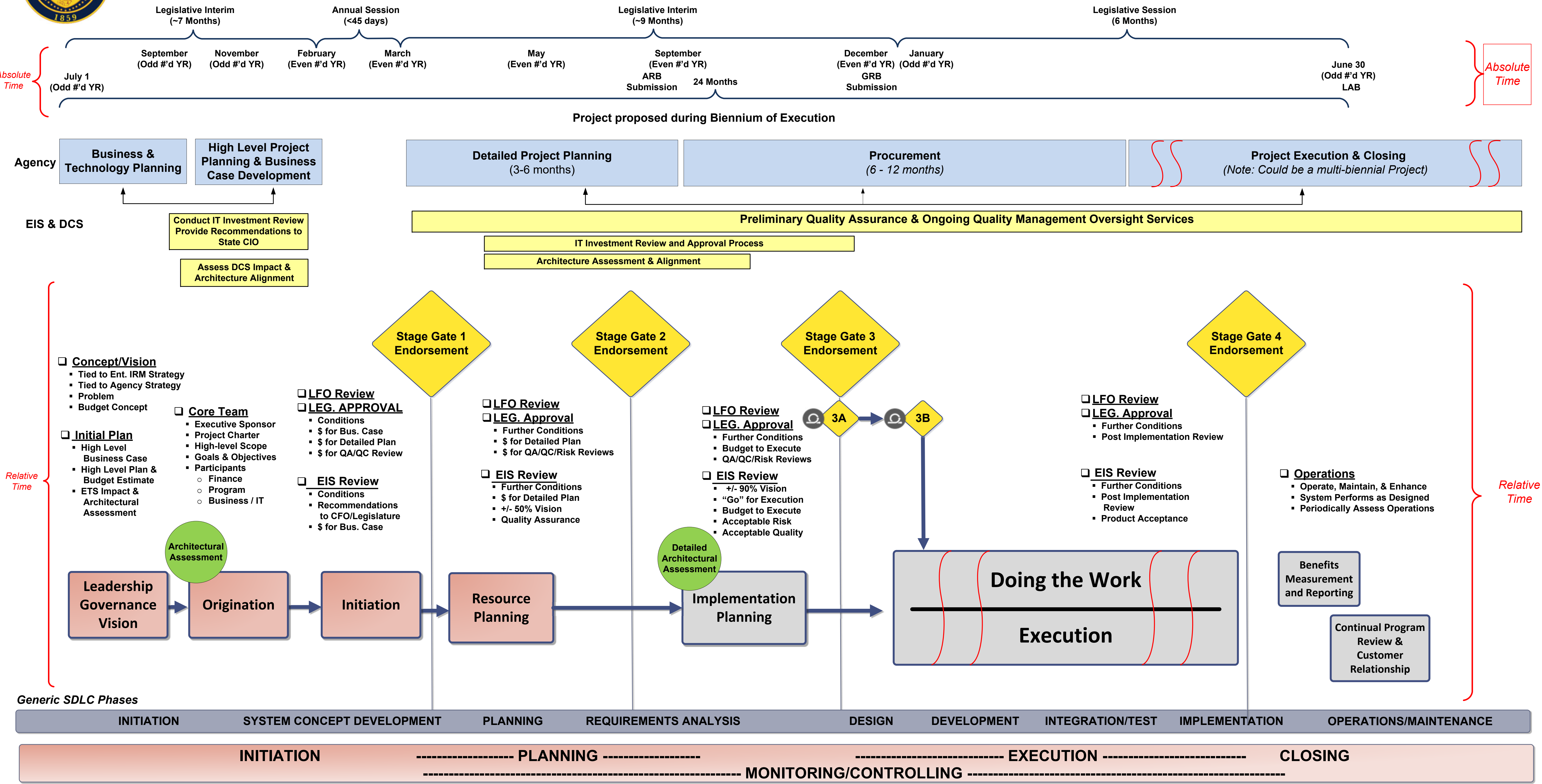
<https://www.oregon.gov/eis/project-portfolio-performance/Pages/guidance-and-forms.aspx>

- * EIS – Enterprise Information Services
- * DCS – EIS Data Center Services
- * CFO – DAS Chief Financial Office
- * LFO – Oregon Legislative Fiscal Office
- * ARB – Agency Request Budget
- * GRB - Governor's Recommended Budget
- * LAB – Legislatively Adopted Budget



Joint EIS/LFO Stage Gate Review Process

Scenario 2 – Concepts/Projects Proposed During Biennium of Execution (v2.0)



PMBOK Process Groups

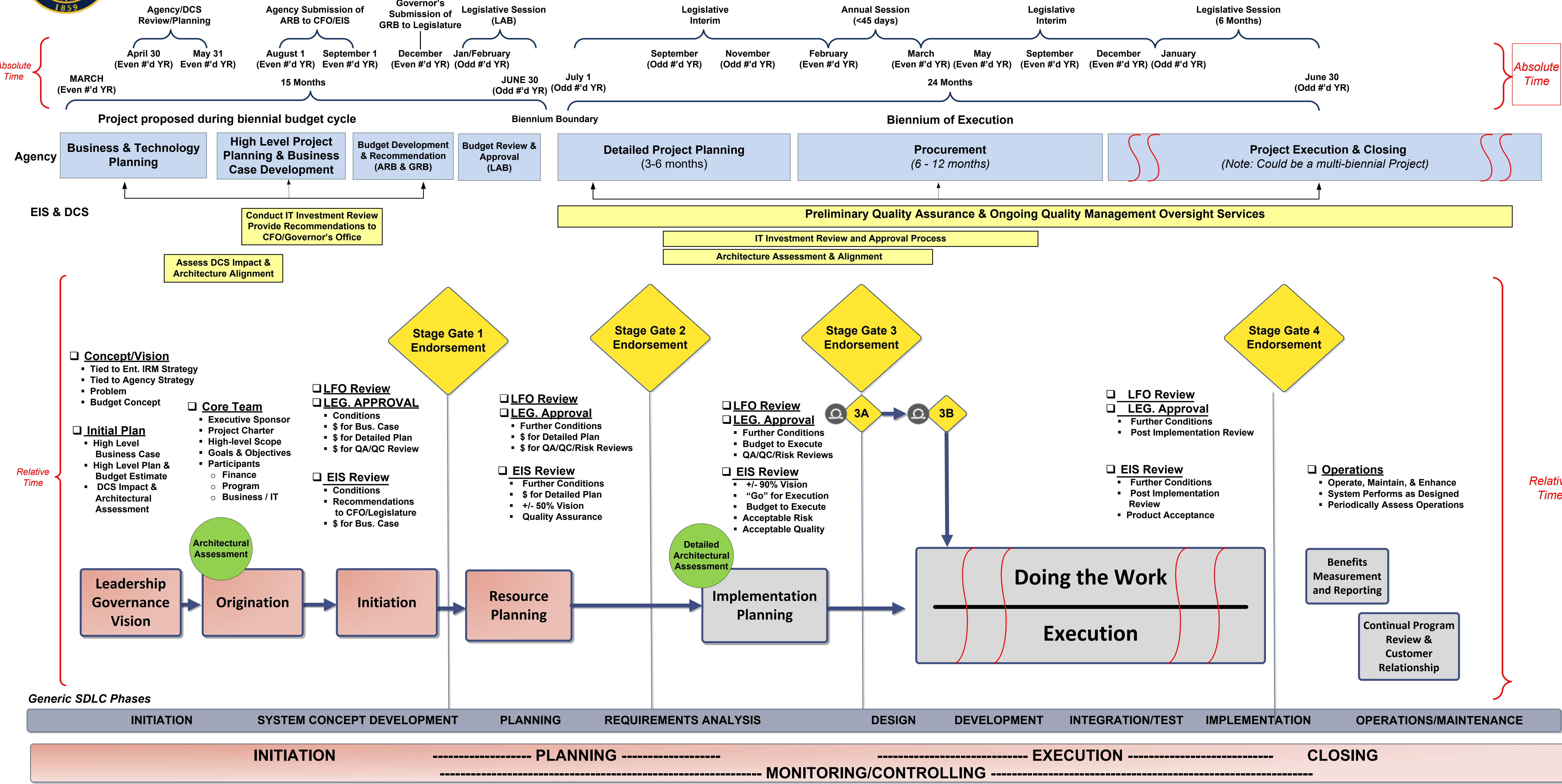
Agile: Depending on an agency's agile maturity, agile or hybrid projects may receive incremental Stage Gate 3A endorsement to embark on initial delivery and then subsequent Stage Gate 3B endorsement to complete the remainder of the project

Artifacts expected for each Stage Gate are available on the EIS-P3 Guidance and Forms web page (<https://www.oregon.gov/eis/project-portfolio-performance/Pages/guidance-and-forms.aspx>)



Joint EIS/LFO Stage Gate Review Process

Scenario 3 – Concepts/Projects Proposed During Biennial Budget Cycle (v2.0)



PMBOK Process Groups

Agile: Depending on an agency's agile maturity, agile or hybrid projects may receive incremental Stage Gate 3A endorsement to embark on initial delivery and then subsequent Stage Gate 3B endorsement to complete the remainder of the project

Artifacts expected for each Stage Gate are available on the EIS-P3 Guidance and Forms web page (<https://www.oregon.gov/eis/project-portfolio-performance/Pages/guidance-and-forms.aspx>)