

UNEMPLOYMENT INSURANCE WEEKLY STATISTICS

State of Oregon
EMPLOYMENT DEPARTMENT
 UI Programs

(503) 947-1350
 [www.WorkingInOregon.org](mailto:ui@oregon.gov)

LABOR FORCE DATA		Last Month	Prior Month	Last Year
		June 2014	May 2014	June 2013
Oregon Civilian Labor Force		1,944,384	1,925,933	1,938,773
Total Number Unemployed		130,058	126,288	152,947
UNEMPLOYMENT RATES (CIVILIAN) (%)		Labor Force & Rate Data: www.QualityInfo.org		
Total Unemployment:	Oregon	6.70%	6.60%	7.90%
	National	6.30%	6.10%	7.80%
Seasonally Adjusted:	Oregon	6.80%	6.80%	7.80%
	National	6.10%	6.30%	7.50%

Week # :	27	THIS WEEK		LAST WEEK		Last Month	Prior Month	Last Year
	Ending:	2014	2013	2014	2013	June 2014	May 2014	June 2013
UNEMPLOYMENT RATES (%)								
Insured Unemployment: Oregon	2.12	2.68	2.17	2.65	2.03	2.07	3.08	
EB Trigger ¹	2.28	2.82	2.31	2.92				
Adjusted Insured Unemployment	2.94	3.74	3.00	3.89				
National Average TUR ²	6.90	8.00	6.90	8.00				
REGULAR CLAIMS (UI, UCFE, UCX)								
Initial Claims (Excl. Liable) ³	5,584	6,062	5,892	7,318	21,632	17,548	25,415	
Oregon - New	3,056	2,501	3,353	3,819	11,774	8,844	12,351	
Additional	2,528	3,248	2,539	3,186	9,858	8,704	11,947	
Interstate - Agent	0	313	0	313	0	0	1,117	
Interstate - Liable	217	219	217	254	791	711	934	
Weeks Claimed (Excl. Liable) ³	33,391	43,269	34,238	42,571	145,723	154,406	176,632	
Oregon	33,391	40,951	34,238	40,074	136,978	144,792	166,493	
Interstate - Agent	0	2,318	0	2,497	8,745	9,614	10,139	
Interstate - Liable	1,669	2,036	1,727	2,039	6,842	7,086	8,222	
New Combined Wage Claims	118	117	105	95	454	457	546	
Non-monetary Determinations & Redeter.	1,679	1,756	1,860	1,901	7,189	5,446	8,145	
PAYMENTS: REGULAR BENEFITS								
First Payments	2,125	2,486	1,977	2,266	7,059	5,994	9,065	
Payments Issued	32,161	39,864	32,783	40,213	133,263	144,273	163,296	
Gross Amount of Payments (\$) ³	\$9,687,718	\$11,737,114	\$9,970,317	\$11,747,123	\$40,489,468	\$43,256,288	\$47,753,422	
Average Check Amount (\$) ³	\$301	294	\$304	292	\$304	\$300	292	
Number Exhausting Benefits	642	927	706	1,009	2,979	2,823	4,043	
TRUST FUND								
Balance (in Millions) (\$)	\$2,049.51	\$1,566.68	\$2,044.93	\$1,573.61	\$2,045.27	\$2,081.79	\$1,567.06	

¹ EB Trigger Graph: <http://www.oregon.gov/EMPLOY/BUDGET/UI/reports/102/TUR.pdf>

² NTUR: Unemployment Compensation Amendment Of 1992 specifies that a 2 month average NTUR be used to determine duration levels.

³ Excludes WORKSHARE program

For current and historic UI reports, visit:

<http://www.oregon.gov/EMPLOY/BUDGET/UI/Pages/index.aspx>

Week # :	27
Ending:	July 5, 2014

	This Week	Last Week	Cumulative YTD
EXTENDED BENEFITS (EB)			
Initial Claims (Excl. Liable)	0	0	4
Weeks Claimed (Excl. Liable)	0	5	44
Gross Amount of Payments (\$)	\$0	\$0	\$1,052
Number Exhausting Benefits	0	0	0

Oregon HEB Trigger "OFF" 04/07/2012.

http://www.workforcesecurity.doleta.gov/unemploy/claims_arch.asp

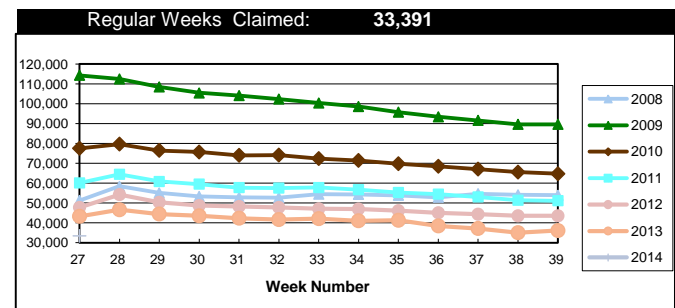
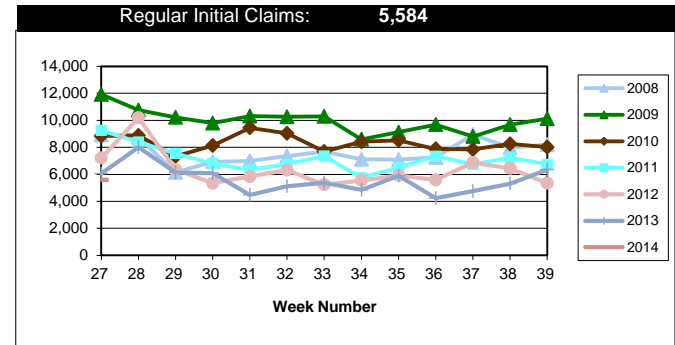
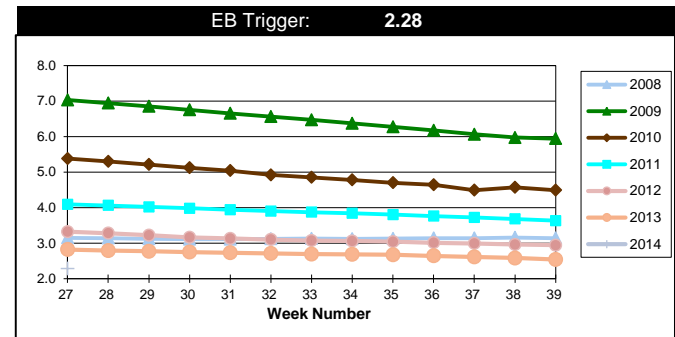
Misc Additional Benefits (AB)			
Initial Claims (Excl. Liable)	0	0	4
Weeks Claimed (Excl. Liable)	2	2	90
Gross Amount of Payments (\$)	0	0	\$0
Number Exhausting Benefits	0	0	0

TRADE ADJUSTMENT ACT (TRA)			
Training Plans	4	6	212
Initial Claims	3	3	290
Weeks Claimed	538	556	15,558
Gross Amount of TRA Payments (\$)	\$249,339	\$257,241	\$7,402,977
Certifications	0	0	7
Gross Amount of A/RTAA Payments (\$)	95,527	273,431	\$3,857,032

WORKSHARE PROGRAM (WS)			
Initial Claims	8	9	1,244
Weeks Claimed	217	357	9,766
Gross Amount of Payments (\$)	\$19,604	\$30,037	\$897,865
# of Workshare Plans	139	141	3,871

TRAINING UI (TUI)			
Applications Accepted	47	62	2,127
Approved	42	53	1,839
Weeks Claimed	1,779	1,915	67,769
Gross Amount of Payments (\$)	\$195,157	\$168,547	\$7,183,369

SUPPLEMENTAL UI for DISLOCATED WORKERS (SUD)			
Initial Claims	25	61	2,509
Weeks Claimed	1,149	1,225	44,335
Gross Amount of Payments (\$)	\$427,078	\$385,704	\$15,630,118



For current and historic UI reports, visit:



<http://www.oregon.gov/EMPLOY/BUDGET/UI/Pages/index.asp>



(503) 947-1350



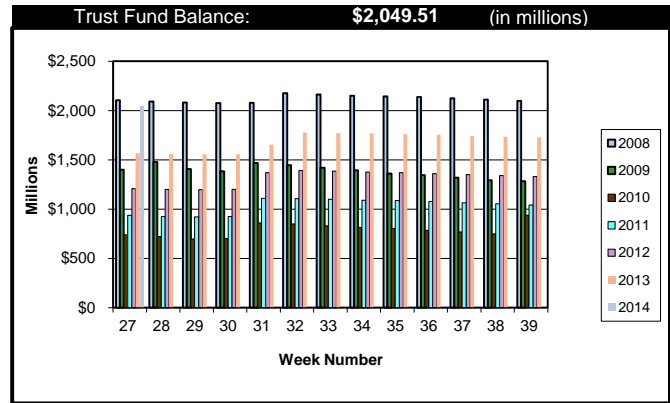
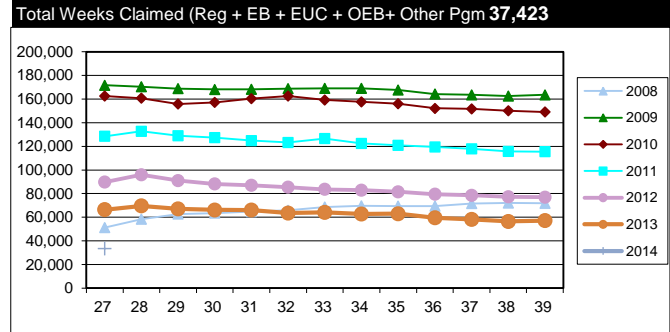
Week # :	27
Ending:	July 5, 2014

SELF EMPLOYMENT (SEA) MONTHLY		July 2014	Cumulative
Referred		72	465
Enrolled		72	465
Completed		37	323
Weeks Claimed	346	1,366	8,773
Gross Amount of Payments (\$)	144,589	\$584,092	\$3,825,665

These are MONTHLY counts; data in BOLD is weekly.

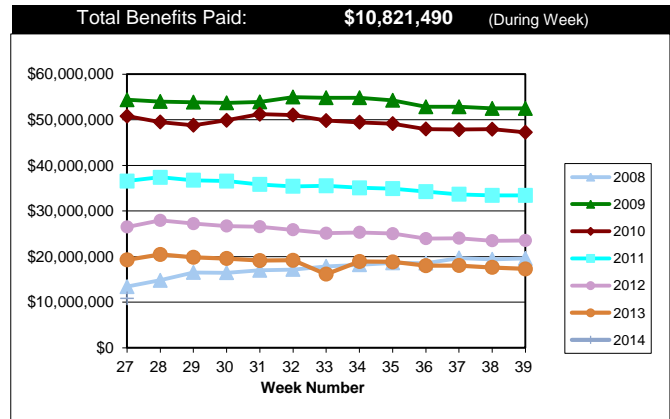
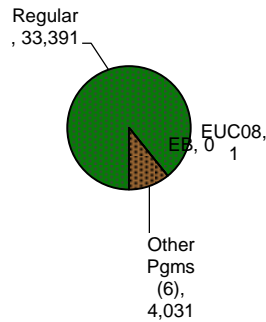
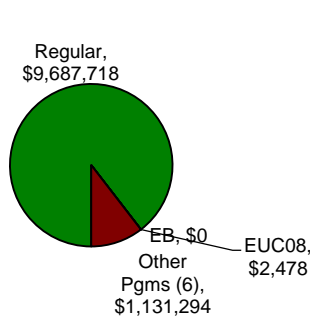
EMERGENCY UNEMPLOYMENT COMPENSATION 08 (EUC08)	This Week	Last Week	Cumulative
Initial Claims (Excl. Liable)	15	22	2,279
Weeks Claimed (Excl. Liable)	1	10	21,417
Gross Amount of Payments (\$)	\$2,478	\$9,608	\$8,029,707
Number Exhausting Tier 1 Benefits	2	3	387
Number Exhausting Tier 2 Benefits	0	0	470
Number Exhausting Tier Z Benefits (14th week of Tier 2)	0	0	493
Number Exhausting Tier 3 Benefits	0	0	567
Number Exhausting Tier 4 Benefits	0	0	78

EUC began 07/06/2008



Benefits Paid - By Program
Total: **\$10,821,490**

Weeks Claimed - By Program
Total: **37,423**



* Other Programs Include AB, TRA, TAA, WS, TUI, SUD, SEA

For current and historic UI reports, visit:



<http://www.oregon.gov/EMPLOY/BUDGET/UI/Pages/index.asp>



(503) 947-1350

