

UNEMPLOYMENT INSURANCE WEEKLY STATISTICS

State of Oregon
EMPLOYMENT DEPARTMENT
 UI Programs

(503) 947-1350



www.WorkingInOregon.org

LABOR FORCE DATA		Last Month	Prior Month	Last Year
		June 2014	May 2014	June 2013
Oregon Civilian Labor Force		1,944,384	1,925,933	1,938,773
Total Number Unemployed		130,058	126,288	152,947
UNEMPLOYMENT RATES (CIVILIAN) (%)		Labor Force & Rate Data: www.QualityInfo.org		
Total Unemployment:	Oregon	6.70%	6.60%	7.90%
	National	6.30%	6.10%	7.80%
Seasonally Adjusted:	Oregon	6.80%	6.80%	7.80%
	National	6.10%	6.30%	7.50%

Week # :	31		THIS WEEK		LAST WEEK		Last Month	Prior Month	Last Year
	Ending:	August 2, 2014	2014	2013	2014	2013	June 2014	May 2014	June 2013
UNEMPLOYMENT RATES (%)									
Insured Unemployment: Oregon		2.13	2.63	2.13	2.71	2.03	2.07	3.08	
EB Trigger ¹		2.19	2.73	2.21	2.75				
Adjusted Insured Unemployment		2.85	3.61	2.88	3.68				
National Average TUR ²		6.80	7.90	6.80	7.90				
REGULAR CLAIMS (UI, UCFE, UCX)									
Initial Claims (Excl. Liable) ³		3,521	4,478	4,454	6,092	21,632	17,548	25,415	
Oregon - New		1,760	1,834	2,523	3,509	11,774	8,844	12,351	
Additional		1,761	2,333	1,931	2,244	9,858	8,704	11,947	
Interstate - Agent		0	311	0	339	0	0	1,117	
Interstate - Liable		171	172	187	243	791	711	934	
Weeks Claimed (Excl. Liable) ³		33,410	42,367	33,341	43,601	145,723	154,406	176,632	
Oregon		33,410	39,788	33,341	41,157	136,978	144,792	166,493	
Interstate - Agent		0	2,579	0	2,444	8,745	9,614	10,139	
Interstate - Liable		1,740	2,045	1,758	2,165	6,842	7,086	8,222	
New Combined Wage Claims		97	115	132	142	454	457	546	
Non-monetary Determinations & Redeter.		1,930	2,105	2,163	2,207	7,189	5,446	8,145	
PAYMENTS: REGULAR BENEFITS									
First Payments		1,890	2,130	2,143	2,427	7,059	5,994	9,065	
Payments Issued		32,751	39,541	32,992	40,310	133,263	144,273	163,296	
Gross Amount of Payments (\$) ³		\$9,987,307	\$11,748,441	\$10,063,098	\$11,955,265	\$40,489,468	\$43,256,288	\$47,753,422	
Average Check Amount (\$) ³		\$305	297	\$305	297	\$304	\$300	292	
Number Exhausting Benefits		785	1,005	811	1,024	2,979	2,823	4,043	
TRUST FUND									
Balance (in Millions) (\$)		\$2,058.93	\$1,655.28	\$2,044.97	\$1,556.2	\$2,045.27	\$2,081.79	\$1,567.06	

¹ EB Trigger Graph: <http://www.oregon.gov/EMPLOY/BUDGET/UI/reports/102/TUR.pdf>

² NTUR: Unemployment Compensation Amendment Of 1992 specifies that a 2 month average NTUR be used to determine duration levels.

³ Excludes WORKSHARE program

For current and historic UI reports, visit:

<http://www.oregon.gov/EMPLOY/BUDGET/UI/Pages/index.aspx>

Week # :	31
Ending:	August 2, 2014

	This Week	Last Week	Cumulative YTD
EXTENDED BENEFITS (EB)			
Initial Claims (Excl. Liable)	0	0	4
Weeks Claimed (Excl. Liable)	0	0	44
Gross Amount of Payments (\$)	\$0	\$0	\$1,052
Number Exhausting Benefits	0	0	0

Oregon HEB Trigger "OFF" 04/07/2012.

http://www.workforcesecurity.doleta.gov/unemploy/claims_arch.asp

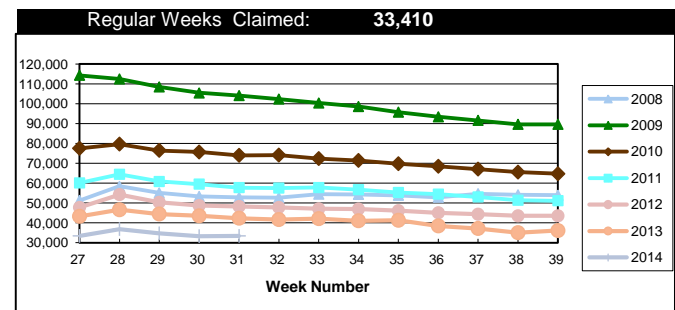
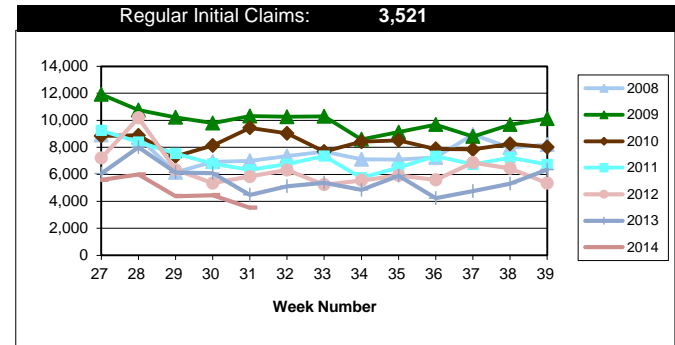
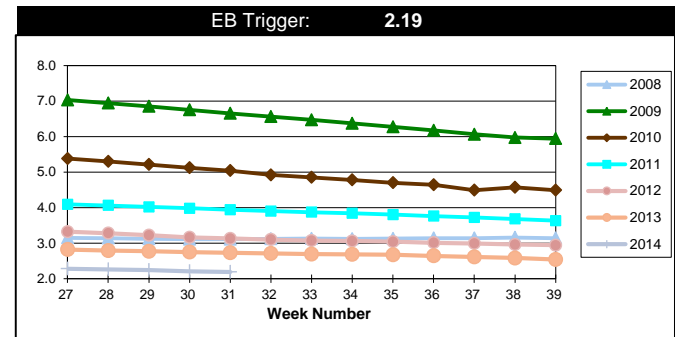
Misc Additional Benefits (AB)			
Initial Claims (Excl. Liable)	0	0	4
Weeks Claimed (Excl. Liable)	6	1	101
Gross Amount of Payments (\$)	0	0	\$0
Number Exhausting Benefits	0	0	0

TRADE ADJUSTMENT ACT (TRA)			
Training Plans	2	1	217
Initial Claims	8	4	314
Weeks Claimed	554	553	17,759
Gross Amount of TRA Payments (\$)	\$251,033	\$243,110	\$8,388,038
Certifications	0	0	8
Gross Amount of A/RTAA Payments (\$)	98,775	210,638	\$4,576,393

WORKSHARE PROGRAM (WS)			
Initial Claims	0	33	1,287
Weeks Claimed	201	243	10,669
Gross Amount of Payments (\$)	\$19,658	\$21,652	\$983,544
# of Workshare Plans	137	134	4,419

TRAINING UI (TUI)			
Applications Accepted	43	58	2,314
Approved	37	58	2,015
Weeks Claimed	1,234	1,262	72,889
Gross Amount of Payments (\$)	\$169,245	\$180,847	\$7,916,377

SUPPLEMENTAL UI for DISLOCATED WORKERS (SUD)			
Initial Claims	43	50	2,688
Weeks Claimed	730	1,183	47,693
Gross Amount of Payments (\$)	\$248,218	\$251,879	\$16,683,952



For current and historic UI reports, visit:



<http://www.oregon.gov/EMPLOY/BUDGET/UI/Pages/index.asp>



(503) 947-1350



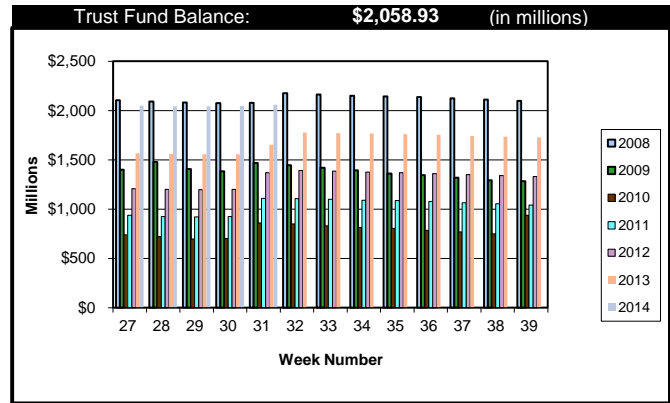
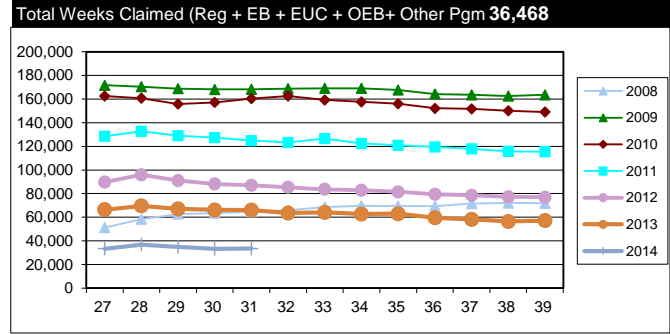
Week # :	31
Ending:	August 2, 2014

SELF EMPLOYMENT (SEA) MONTHLY		July 2014	Cumulative
Referred		72	533
Enrolled		72	533
Completed		37	377
Weeks Claimed	319	1,366	10,096
Gross Amount of Payments (\$)	141,087	\$584,092	\$4,414,290

These are MONTHLY counts; data in BOLD is weekly.

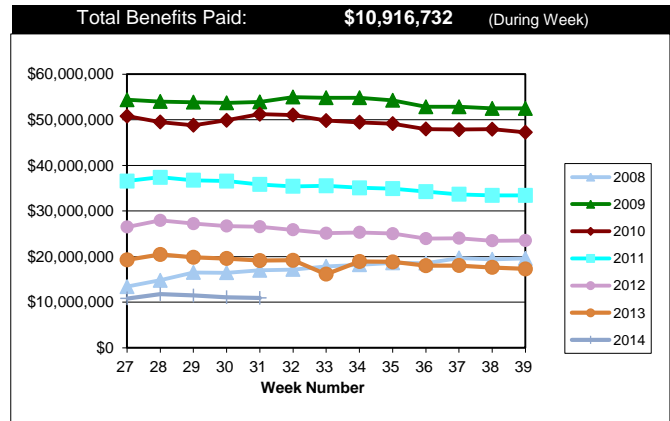
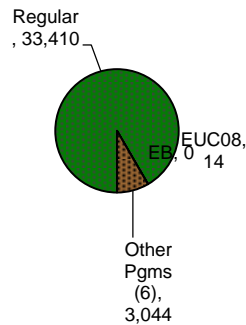
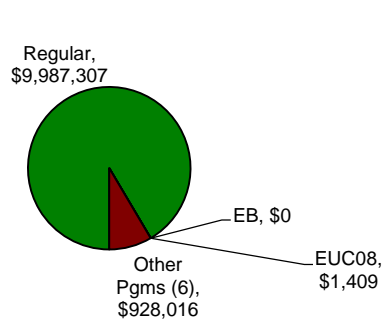
EMERGENCY UNEMPLOYMENT COMPENSATION 08 (EUC08)	This Week	Last Week	Cumulative
Initial Claims (Excl. Liable)	0	1	2,295
Weeks Claimed (Excl. Liable)	14	13	21,451
Gross Amount of Payments (\$)	\$1,409	\$938	\$8,036,601
Number Exhausting Tier 1 Benefits	0	0	388
Number Exhausting Tier 2 Benefits	0	0	470
Number Exhausting Tier Z Benefits (14th week of Tier 2)	0	0	493
Number Exhausting Tier 3 Benefits	0	0	567
Number Exhausting Tier 4 Benefits	0	0	78

EUC began 07/06/2008



Benefits Paid - By Program
Total: \$10,916,732

Weeks Claimed - By Program
Total: 36,468



* Other Programs Include AB, TRA, TAA, WS, TUI, SUD, SEA

For current and historic UI reports, visit:



<http://www.oregon.gov/EMPLOY/BUDGET/UI/Pages/index.asp>



(503) 947-1350

