

# UNEMPLOYMENT INSURANCE WEEKLY STATISTICS

State of Oregon  
EMPLOYMENT DEPARTMENT

UI Programs

(503) 947-1350



[www.WorkingInOregon.org](http://www.WorkingInOregon.org)

LABOR FORCE DATA		Last Month	Prior Month	Last Year
		July 2014	June 2014	July 2013
Oregon Civilian Labor Force		1,965,255	1,943,566	1,943,465
Total Number Unemployed		138,452	128,804	150,177
UNEMPLOYMENT RATES (CIVILIAN) (%)		Labor Force & Rate Data: <a href="http://www.QualityInfo.org">www.QualityInfo.org</a>		
Total Unemployment:	Oregon	7.00%	6.60%	7.70%
	National	6.50%	6.30%	7.70%
Seasonally Adjusted:	Oregon	6.90%	6.80%	7.80%
	National	6.20%	6.10%	7.50%

Week # :	33	THIS WEEK		LAST WEEK		Last Month	Prior Month	Last Year
Ending:	August 16, 2014	2014	2013	2014	2013	July 2014	June 2014	July 2013
<b>UNEMPLOYMENT RATES (%)</b>								
Insured Unemployment: Oregon	2.05	2.62	2.06	2.58		2.50	2.03	3.66
EB Trigger <sup>1</sup>	2.15	2.69	2.17	2.71				
Adjusted Insured Unemployment	2.80	3.58	2.82	3.59				
National Average TUR <sup>2</sup>	6.80	7.90	6.80	7.90				
<b>REGULAR CLAIMS (UI, UCFE, UCX)</b>								
Initial Claims (Excl. Liable) <sup>3</sup>	4,248	5,378	4,239	5,114		24,254	21,632	31,149
Oregon - New	2,513	2,684	2,494	2,368		13,371	11,774	15,835
Additional	1,735	2,401	1,745	2,446		10,883	9,858	13,682
Interstate - Agent	0	293	0	300		0	0	1,632
Interstate - Liable	204	227	232	226		1,000	791	1,091
Weeks Claimed (Excl. Liable) <sup>3</sup>	32,052	42,169	32,391	41,667		185,166	145,723	224,333
Oregon	32,052	39,593	32,391	39,249		174,849	136,978	212,053
Interstate - Agent	0	2,576	0	2,418		10,317	8,745	12,280
Interstate - Liable	1,731	2,021	1,682	2,025		8,797	6,842	10,423
New Combined Wage Claims	111	117	112	105		625	454	581
Non-monetary Determinations & Redeter.	1,858	1,961	1,940	1,994		10,193	7,189	10,428
<b>PAYMENTS: REGULAR BENEFITS</b>								
First Payments	1,708	1,976	1,819	2,057		11,027	7,059	12,571
Payments Issued	31,947	39,366	32,225	39,562		166,950	133,263	204,089
Gross Amount of Payments (\$) <sup>3</sup>	\$9,805,607	\$11,667,880	\$9,900,439	\$11,784,096		\$50,760,864	\$40,489,468	\$60,398,333
Average Check Amount (\$) <sup>3</sup>	\$307	296	\$307	298		\$304	\$304	296
Number Exhausting Benefits	746	1,015	663	894		4,124	2,979	5,354
<b>TRUST FUND</b>								
Balance (in Millions) (\$)	\$2,250.64	\$1,769.86	\$2,252.44	\$1,775.65		\$2,053.56	\$2,045.27	\$1,558.04

<sup>1</sup> EB Trigger Graph: <http://www.oregon.gov/EMPLOY/BUDGET/UI/reports/102/TUR.pdf>

<sup>2</sup> NTUR: Unemployment Compensation Amendment Of 1992 specifies that a 2 month average NTUR be used to determine duration levels.

<sup>3</sup> Excludes WORKSHARE program

For current and historic UI reports, visit:

<http://www.oregon.gov/EMPLOY/BUDGET/UI/Pages/index.aspx>

<b>Week # :</b>	33
<b>Ending:</b>	August 16, 2014

	This Week	Last Week	Cumulative YTD
<b>EXTENDED BENEFITS (EB)</b>			
Initial Claims (Excl. Liable)	0	0	4
Weeks Claimed (Excl. Liable)	0	1	45
Gross Amount of Payments (\$)	\$0	\$0	\$1,052
Number Exhausting Benefits	0	0	0

Oregon HEB Trigger "OFF" 04/07/2012.

[http://www.workforcesecurity.doleta.gov/unemploy/claims\\_arch.asp](http://www.workforcesecurity.doleta.gov/unemploy/claims_arch.asp)

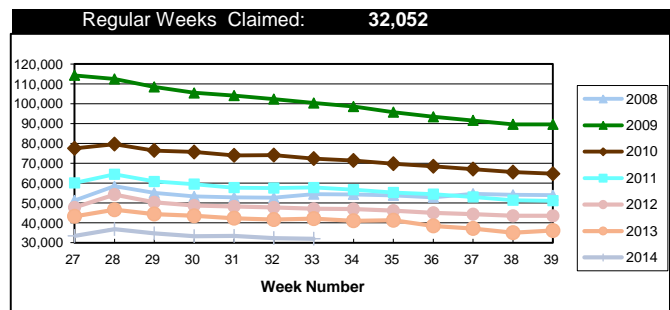
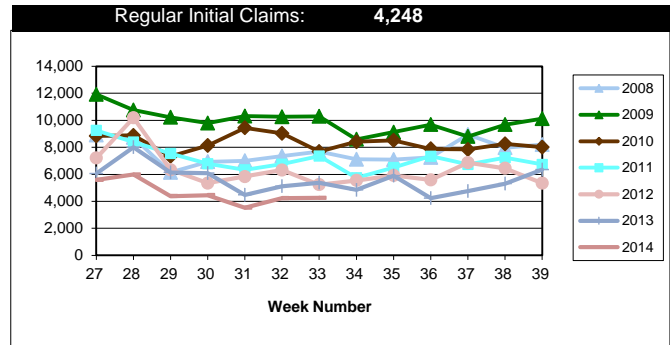
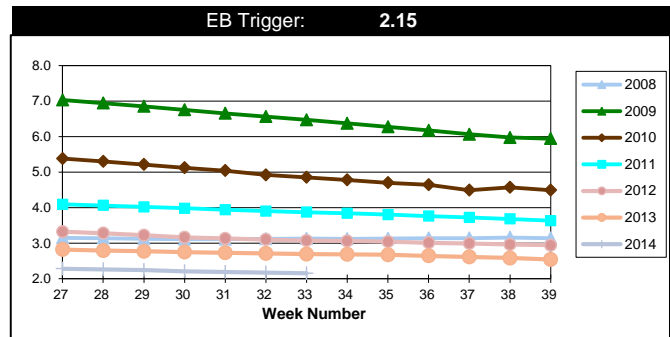
	This Week	Last Week	Cumulative YTD
<b>Misc Additional Benefits (AB)</b>			
Initial Claims (Excl. Liable)	0	0	4
Weeks Claimed (Excl. Liable)	2	1	104
Gross Amount of Payments (\$)	0	0	\$0
Number Exhausting Benefits	0	0	0

	This Week	Last Week	Cumulative YTD
<b>TRADE ADJUSTMENT ACT (TRA)</b>			
Training Plans	1	2	220
Initial Claims	20	5	339
Weeks Claimed	527	534	18,510
Gross Amount of TRA Payments (\$)	\$241,080	\$243,115	\$8,872,233
Certifications	0	0	8
Gross Amount of A/RTAA Payments (\$)	86,348	87,450	\$4,750,191

	This Week	Last Week	Cumulative YTD
<b>WORKSHARE PROGRAM (WS)</b>			
Initial Claims	25	25	1,337
Weeks Claimed	327	208	11,204
Gross Amount of Payments (\$)	\$27,280	\$19,775	\$1,030,599
# of Workshare Plans	139	138	4,696

	This Week	Last Week	Cumulative YTD
<b>TRAINING UI (TUI)</b>			
Applications Accepted	54	47	2,415
Approved	50	40	2,105
Weeks Claimed	1,143	1,176	75,208
Gross Amount of Payments (\$)	\$145,339	\$153,086	\$8,214,802

	This Week	Last Week	Cumulative YTD
<b>SUPPLEMENTAL UI for DISLOCATED WORKERS (SUD)</b>			
Initial Claims	33	26	2,747
Weeks Claimed	669	683	49,045
Gross Amount of Payments (\$)	\$250,000	\$255,068	\$17,189,020



For current and historic UI reports, visit:



<http://www.oregon.gov/EMPLOY/BUDGET/UI/Pages/index.asp>



(503) 947-1350



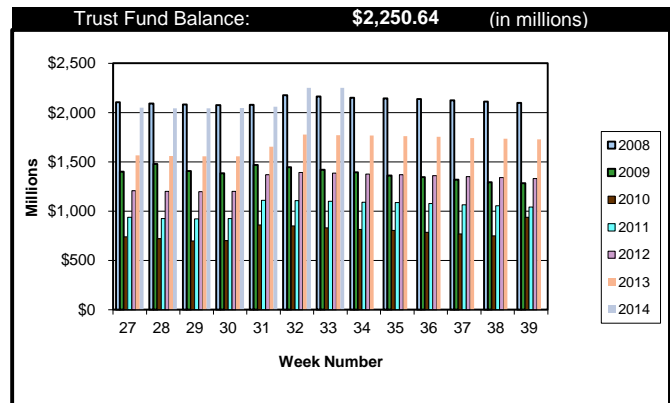
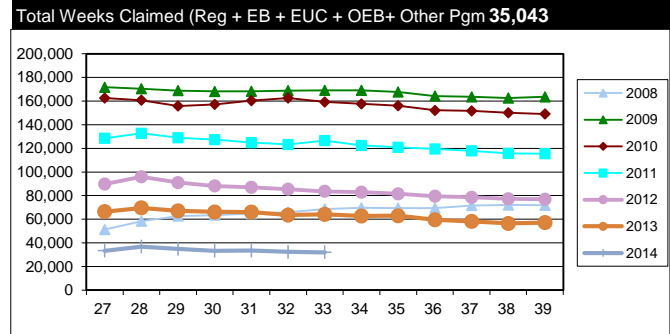
<b>Week # :</b>	<b>33</b>
<b>Ending:</b>	<b>August 16, 2014</b>

<b>SELF EMPLOYMENT (SEA) MONTHLY</b>			
		<b>July 2014</b>	<b>Cumulative</b>
Referred		68	533
Enrolled		68	533
Completed		54	377
<b>Weeks Claimed</b>	<b>321</b>	<b>1,669</b>	<b>10,743</b>
<b>Gross Amount of Payments (\$)</b>	<b>143,391</b>	<b>\$733,214</b>	<b>\$4,699,094</b>

These are MONTHLY counts; data in BOLD is weekly.

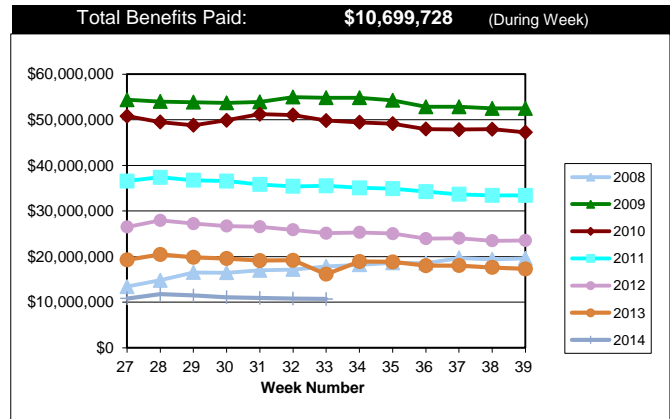
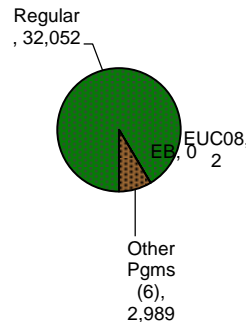
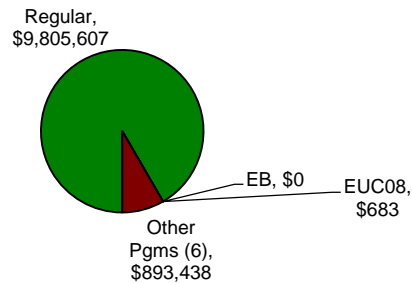
<b>EMERGENCY UNEMPLOYMENT COMPENSATION 08 (EUC08)</b>	<b>This Week</b>	<b>Last Week</b>	<b>Cumulative</b>
Initial Claims (Excl. Liable)	1	1	2,297
Weeks Claimed (Excl. Liable)	2	2	21,455
Gross Amount of Payments (\$)	\$683	\$1,366	\$8,038,650
Number Exhausting Tier 1 Benefits	2	0	390
Number Exhausting Tier 2 Benefits	0	0	470
Number Exhausting Tier Z Benefits (14th week of Tier 2)	0	0	493
Number Exhausting Tier 3 Benefits	0	0	567
Number Exhausting Tier 4 Benefits	0	0	78

EUC began 07/06/2008



**Benefits Paid - By Program**  
Total: **\$10,699,728**

**Weeks Claimed - By Program**  
Total: **35,043**



\* Other Programs Include AB, TRA, TAA, WS, TUI, SUD, SEA

For current and historic UI reports, visit:



<http://www.oregon.gov/EMPLOY/BUDGET/UI/Pages/index.asp>



(503) 947-1350

