

UNEMPLOYMENT INSURANCE WEEKLY STATISTICS

State of Oregon
EMPLOYMENT DEPARTMENT

UI Programs

(503) 947-1350



www.WorkingInOregon.org

LABOR FORCE DATA		Last Month	Prior Month	Last Year
		July 2014	June 2014	July 2013
Oregon Civilian Labor Force		1,965,255	1,943,566	1,943,465
Total Number Unemployed		138,452	128,804	150,177
UNEMPLOYMENT RATES (CIVILIAN) (%)		Labor Force & Rate Data: www.QualityInfo.org		
Total Unemployment:	Oregon	7.00%	6.60%	7.70%
	National	6.50%	6.30%	7.70%
Seasonally Adjusted:	Oregon	6.90%	6.80%	7.80%
	National	6.20%	6.10%	7.50%

Week # :	35	THIS WEEK		LAST WEEK		Last Month	Prior Month	Last Year
Ending:	August 30, 2014	2014	2013	2014	2013	July 2014	June 2014	July 2013
UNEMPLOYMENT RATES (%)								
Insured Unemployment: Oregon	1.99	2.56	2.01	2.55		2.50	2.03	3.66
EB Trigger ¹	2.12	2.67	2.13	2.68				
Adjusted Insured Unemployment	2.77	3.55	2.79	3.56				
National Average TUR ²	6.90	7.90	6.80	7.90				
REGULAR CLAIMS (UI, UCFE, UCX)								
Initial Claims (Excl. Liable) ³	4,298	5,903	4,185	4,847		24,254	21,632	31,149
Oregon - New	2,392	3,345	2,430	2,306		13,371	11,774	15,835
Additional	1,906	2,241	1,755	2,230		10,883	9,858	13,682
Interstate - Agent	0	317	0	311		0	0	1,632
Interstate - Liable	183	223	181	192		1,000	791	1,091
Weeks Claimed (Excl. Liable) ³	31,194	41,318	31,493	41,051		185,166	145,723	224,333
Oregon	31,194	38,872	31,493	38,697		174,849	136,978	212,053
Interstate - Agent	0	2,446	0	2,354		10,317	8,745	12,280
Interstate - Liable	1,708	2,076	1,729	2,044		8,797	6,842	10,423
New Combined Wage Claims	83	110	90	76		625	454	581
Non-monetary Determinations & Redeter.	2,010	2,035	1,864	2,049		10,193	7,189	10,428
PAYMENTS: REGULAR BENEFITS								
First Payments	1,522	1,868	1,557	1,911		11,027	7,059	12,571
Payments Issued	30,797	38,475	31,278	38,718		166,950	133,263	204,089
Gross Amount of Payments (\$) ³	\$9,476,608	\$11,491,719	\$9,600,506	\$11,571,263		\$50,760,864	\$40,489,468	\$60,398,333
Average Check Amount (\$) ³	\$308	299	\$307	299		\$304	\$304	296
Number Exhausting Benefits	688	958	614	880		4,124	2,979	5,354
TRUST FUND								
Balance (in Millions) (\$)	\$2,240.08	\$1,760.6	\$2,245.95	\$1,766.29		\$2,053.56	\$2,045.27	\$1,558.04

¹ EB Trigger Graph: <http://www.oregon.gov/EMPLOY/BUDGET/UI/reports/102/TUR.pdf>

² NTUR: Unemployment Compensation Amendment Of 1992 specifies that a 2 month average NTUR be used to determine duration levels.

³ Excludes WORKSHARE program

For current and historic UI reports, visit:

<http://www.oregon.gov/EMPLOY/BUDGET/UI/Pages/index.aspx>

Week # :	35
Ending:	August 30, 2014

	This Week	Last Week	Cumulative YTD
EXTENDED BENEFITS (EB)			
Initial Claims (Excl. Liable)	0	0	4
Weeks Claimed (Excl. Liable)	0	0	45
Gross Amount of Payments (\$)	\$0	\$0	\$1,052
Number Exhausting Benefits	0	0	0

Oregon HEB Trigger "OFF" 04/07/2012.

http://www.workforcesecurity.doleta.gov/unemploy/claims_arch.asp

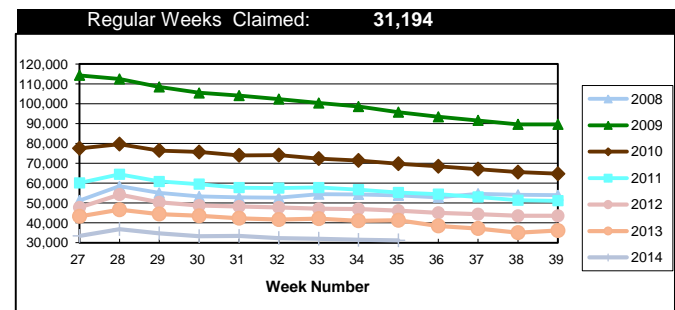
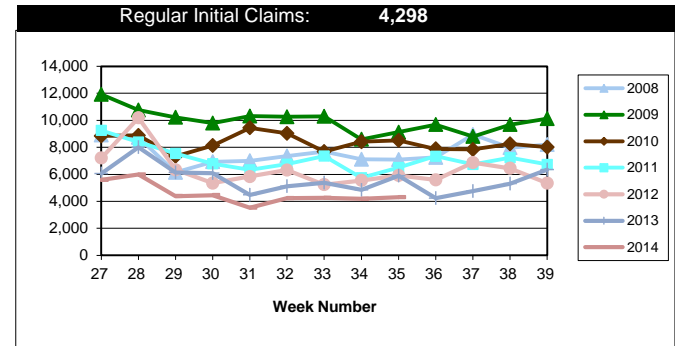
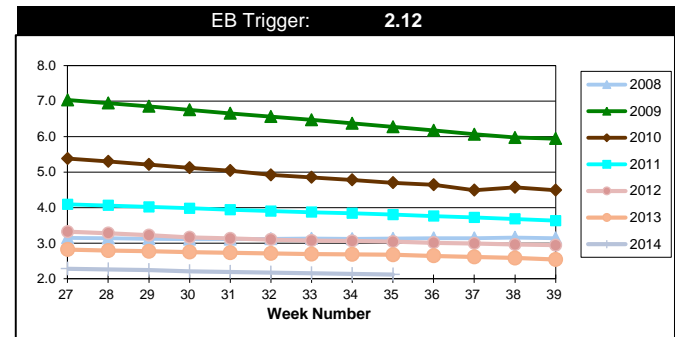
Misc Additional Benefits (AB)			
Initial Claims (Excl. Liable)	0	0	4
Weeks Claimed (Excl. Liable)	2	2	108
Gross Amount of Payments (\$)	0	0	\$0
Number Exhausting Benefits	0	0	0

TRADE ADJUSTMENT ACT (TRA)			
Training Plans	4	2	226
Initial Claims	3	20	346
Weeks Claimed	514	517	19,851
Gross Amount of TRA Payments (\$)	\$229,512	\$233,844	\$9,335,589
Certifications	0	0	8
Gross Amount of A/RTAA Payments (\$)	155,255	200,307	\$5,105,753

WORKSHARE PROGRAM (WS)			
Initial Claims	57	20	1,414
Weeks Claimed	354	257	11,815
Gross Amount of Payments (\$)	\$31,925	\$21,343	\$1,083,867
# of Workshare Plans	136	139	4,971

TRAINING UI (TUI)			
Applications Accepted	25	45	2,485
Approved	22	38	2,165
Weeks Claimed	1,061	1,096	77,365
Gross Amount of Payments (\$)	\$123,709	\$134,336	\$8,472,847

SUPPLEMENTAL UI for DISLOCATED WORKERS (SUD)			
Initial Claims	29	31	2,807
Weeks Claimed	695	665	50,405
Gross Amount of Payments (\$)	\$244,918	\$247,421	\$17,681,359



For current and historic UI reports, visit:



<http://www.oregon.gov/EMPLOY/BUDGET/UI/Pages/index.asp>



(503) 947-1350



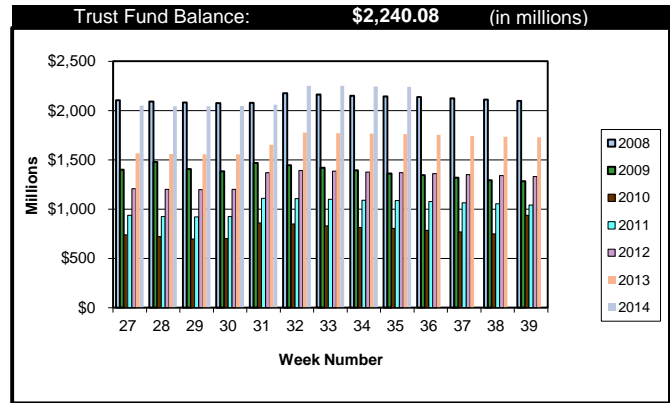
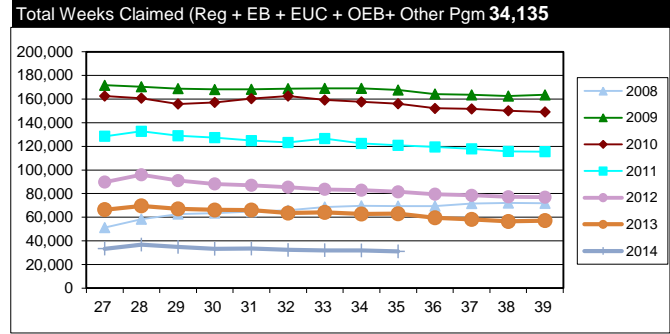
Week # :	35
Ending:	August 30, 2014

SELF EMPLOYMENT (SEA) MONTHLY			
		July 2014	Cumulative
Referred		68	592
Enrolled		68	592
Completed		54	422
Weeks Claimed	314	1,669	11,371
Gross Amount of Payments (\$)	135,631	\$733,214	\$4,967,827

These are MONTHLY counts; data in BOLD is weekly.

EMERGENCY UNEMPLOYMENT COMPENSATION 08 (EUC08)	This Week	Last Week	Cumulative
Initial Claims (Excl. Liable)	1	1	2,299
Weeks Claimed (Excl. Liable)	1	423	21,879
Gross Amount of Payments (\$)	\$0	\$0	\$8,038,650
Number Exhausting Tier 1 Benefits	0	0	390
Number Exhausting Tier 2 Benefits	0	0	470
Number Exhausting Tier Z Benefits (14th week of Tier 2)	0	0	493
Number Exhausting Tier 3 Benefits	0	0	567
Number Exhausting Tier 4 Benefits	0	0	78

EUC began 07/06/2008

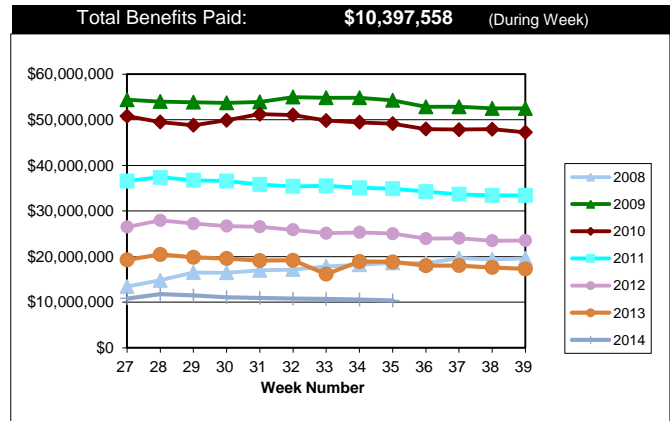


Benefits Paid - By Program
Total: \$10,397,558

Weeks Claimed - By Program
Total: 34,135



* Other Programs Include AB, TRA, TAA, WS, TUI, SUD, SEA



For current and historic UI reports, visit:



<http://www.oregon.gov/EMPLOY/BUDGET/UI/Pages/index.asp>



(503) 947-1350

