


UNEMPLOYMENT INSURANCE WEEKLY STATISTICS

State of Oregon
EMPLOYMENT DEPARTMENT
 UI Programs

 (503) 947-1350



 www.WorkingInOregon.org

LABOR FORCE DATA

Oregon Civilian Labor Force

Total Number Unemployed

UNEMPLOYMENT RATES (CIVILIAN) (%)

Total Unemployment: Oregon

National

Seasonally Adjusted: Oregon

National

	Last Month	Prior Month	Last Year
	September 2014	August 2014	September 2013
Oregon Civilian Labor Force	1,952,263	1,971,365	1,928,004
Total Number Unemployed	119,815	140,258	130,548
Labor Force & Rate Data: www.QualityInfo.org			
Total Unemployment: Oregon	6.10%	7.10%	6.80%
National	5.70%	6.30%	7.00%
Seasonally Adjusted: Oregon	7.10%	7.10%	7.60%
National	5.90%	6.10%	7.20%

Week # :	42
Ending:	October 18, 2014

	THIS WEEK		LAST WEEK		Last Month	Prior Month	Last Year
	2014	2013	2014	2013	September 2014	August 2014	September 2013
UNEMPLOYMENT RATES (%)							
Insured Unemployment: Oregon	1.84	2.34	1.84	2.32	1.78	1.86	2.80
EB Trigger ¹	1.94	2.42	1.96	2.45			
Adjusted Insured Unemployment	2.53	3.26	2.55	3.29			
National Average TUR ²	6.90	8.00	6.90	8.00			
REGULAR CLAIMS (UI, UCFE, UCX)							
Initial Claims (Excl. Liable) ³	4,542	5,536	4,587	5,600	17,824	17,151	20,890
Oregon - New	2,393	2,733	2,798	2,590	9,963	9,967	10,408
Additional	2,149	2,364	1,789	2,658	7,861	7,184	9,469
Interstate - Agent	0	439	0	352	0	0	1,013
Interstate - Liable	192	253	228	281	727	800	768
Weeks Claimed (Excl. Liable) ³	28,854	37,859	28,831	37,530	127,362	137,668	149,685
Oregon	28,854	35,191	28,831	35,142	119,533	129,543	140,799
Interstate - Agent	0	2,668	0	2,388	7,829	8,125	8,886
Interstate - Liable	1,722	1,992	1,688	1,999	6,786	6,850	7,631
New Combined Wage Claims	122	138	146	163	412	396	347
Non-monetary Determinations & Redeter.	1,823	1,677	1,967	1,934	7,272	7,762	7,238
PAYMENTS: REGULAR BENEFITS							
First Payments	2,002	3,316	1,635	1,892	6,556	6,606	6,733
Payments Issued	28,524	35,309	28,005	34,371	115,171	126,247	138,716
Gross Amount of Payments (\$) ³	\$9,041,117	11,208,555	\$8,922,369	10,596,155	\$36,466,905	\$38,783,160	42,263,217
Average Check Amount (\$) ³	\$317	317	\$319	308	\$317	\$307	305
Number Exhausting Benefits	644	922	696	1,057	2,804	2,711	3,600
TRUST FUND							
Balance (in Millions) (\$)	\$2,207.71	\$1,722.11	\$2,210.48	\$1,723.46	\$2,204.1	\$2,240.08	\$1,727.63

¹ EB Trigger Graph: <http://www.oregon.gov/EMPLOY/BUDGET/UI/reports/102/IUR.pdf>

² NTUR: Unemployment Compensation Amendment Of 1992 specifies that a 2 month average NTUR be used to determine duration levels.

³ Excludes WORKSHARE program

For current and historic UI reports, visit:

<http://www.oregon.gov/EMPLOY/BUDGET/UI/Pages/index.aspx>

Week # :	42
Ending:	October 18, 2014

	This Week	Last Week	Cumulative YTD
EXTENDED BENEFITS (EB)			
Initial Claims (Excl. Liable)	0	1	5
Weeks Claimed (Excl. Liable)	0	0	45
Gross Amount of Payments (\$)	\$0	\$0	\$1,052
Number Exhausting Benefits	0	0	0

Oregon HEB Trigger "OFF" 04/07/2012.
http://www.workforcsecurity.doleta.gov/unemploy/claims_arch.asp

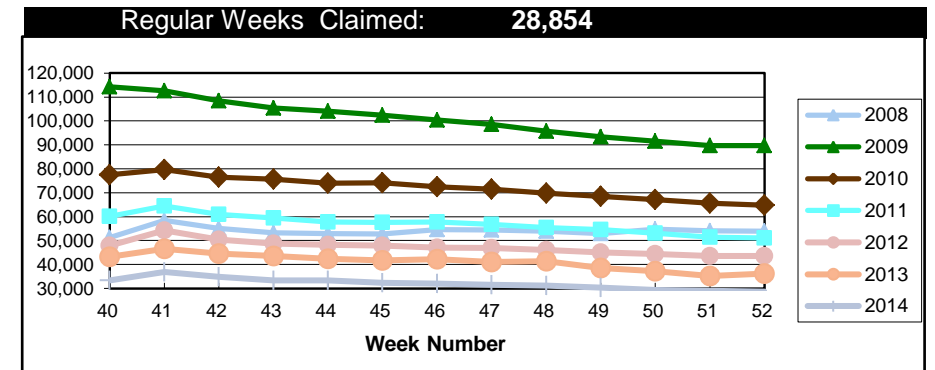
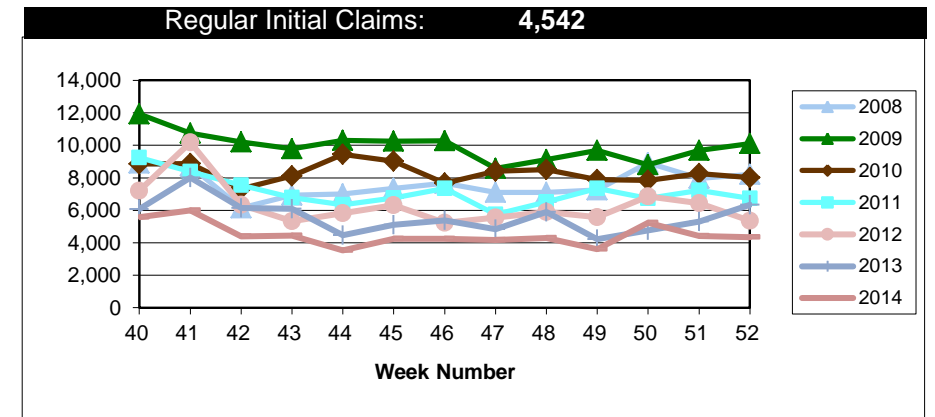
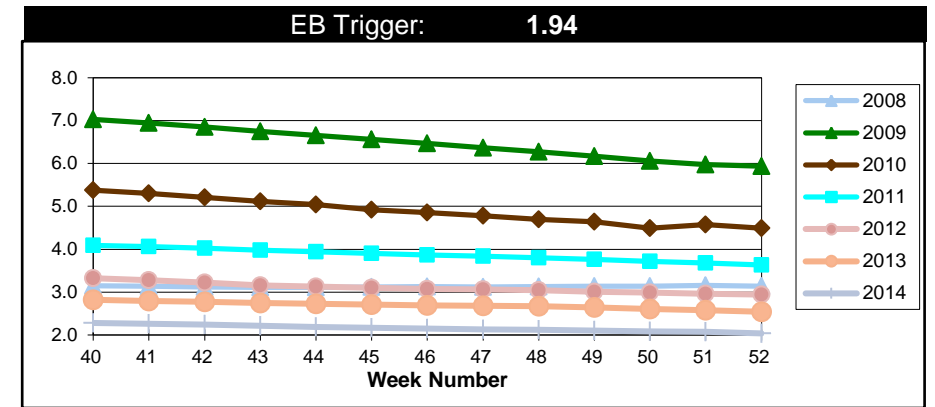
	This Week	Last Week	Cumulative YTD
Misc Additional Benefits (AB)			
Initial Claims (Excl. Liable)	0	0	4
Weeks Claimed (Excl. Liable)	1	1	118
Gross Amount of Payments (\$)	0	0	\$0
Number Exhausting Benefits	0	0	0

	This Week	Last Week	Cumulative YTD
TRADE ADJUSTMENT ACT (TRA)			
Training Plans	1	3	273
Initial Claims	3	8	405
Weeks Claimed	512	499	23,372
Gross Amount of TRA Payments (\$)	\$236,715	\$226,708	\$10,922,212
Certifications	0	0	8
Gross Amount of A/RTAA Payments (\$)	159,775	108,468	\$5,633,552

	This Week	Last Week	Cumulative YTD
WORKSHARE PROGRAM (WS)			
Initial Claims	22	0	1,671
Weeks Claimed	288	243	13,457
Gross Amount of Payments (\$)	\$21,659	\$19,433	\$1,214,605
# of Workshare Plans	125	127	5,883

	This Week	Last Week	Cumulative YTD
TRAINING UI (TUI)			
Applications Accepted	105	0	3,109
Approved	88	0	2,714
Weeks Claimed	1,284	1,258	84,922
Gross Amount of Payments (\$)	\$195,251	\$193,762	\$9,467,399

	This Week	Last Week	Cumulative YTD
SUPPLEMENTAL UI for DISLOCATED WORKERS (SUD)			
Initial Claims	41	51	3,100
Weeks Claimed	1,173	666	55,377
Gross Amount of Payments (\$)	\$267,965	\$256,856	\$19,381,208



For current and historic UI reports, visit:



<http://www.oregon.gov/EMPLOY/BUDGET/UI/Pages/index.aspx>



(503) 947-1350



Week # : 42
Ending: October 18, 2014

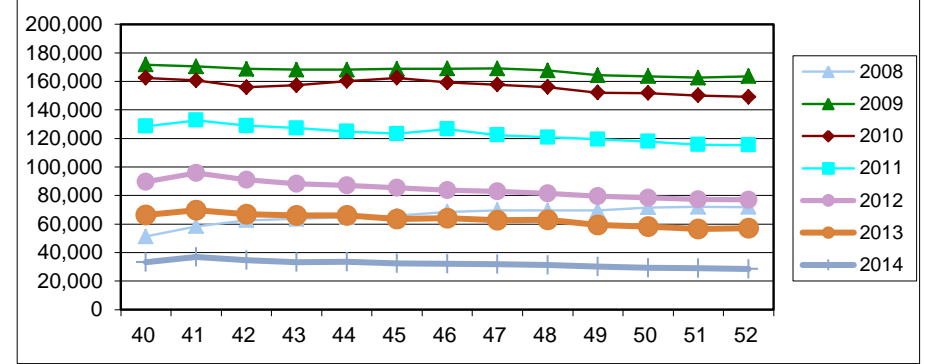
SELF EMPLOYMENT (SEA) MONTHLY		September 2014	Cumulative
Referred		59	723
Enrolled		59	722
Completed		59	570
Weeks Claimed	276	1,205	13,409
Gross Amount of Payments (\$)	121,087	\$524,266	\$5,859,340

These are MONTHLY counts; data in **BOLD** is weekly.

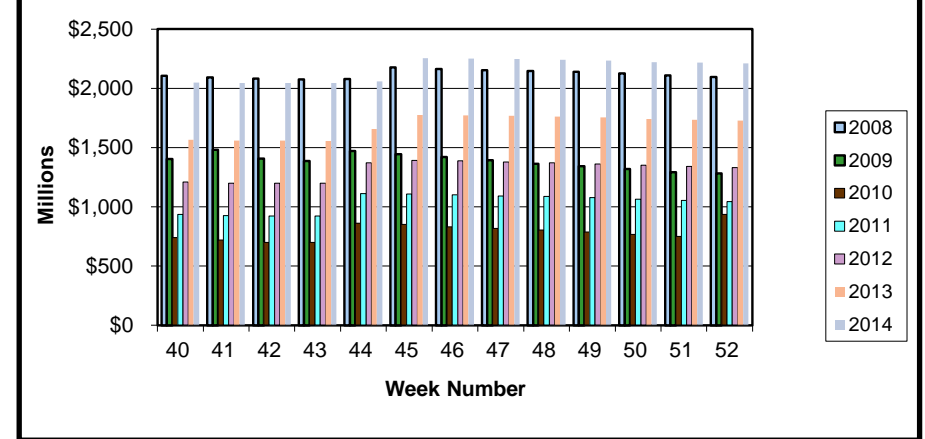
EMERGENCY UNEMPLOYMENT COMPENSATION 08 (EUC08)	This Week	Last Week	Cumulative
Initial Claims (Excl. Liable)	1	2	2,308
Weeks Claimed (Excl. Liable)	17	0	21,925
Gross Amount of Payments (\$)	\$0	\$50	\$8,044,299
Number Exhausting Tier 1 Benefits	0	0	390
Number Exhausting Tier 2 Benefits	0	0	470
Number Exhausting Tier Z Benefits (14th week of Tier 2)	0	0	493
Number Exhausting Tier 3 Benefits	0	0	567
Number Exhausting Tier 4 Benefits	0	0	78

EUC began 07/06/2008

Total Weeks Claimed (Reg + EB + EUC + OEB+ Other Pgm): 32,405

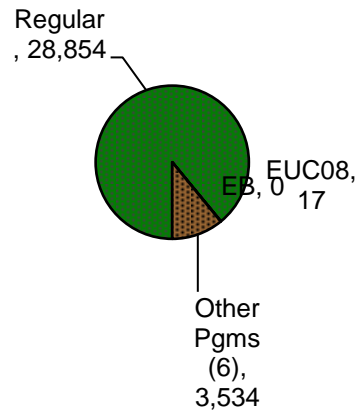
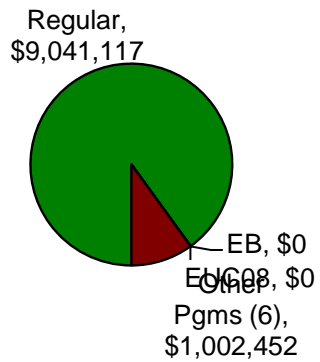


Trust Fund Balance: \$2,207.71 (in millions)

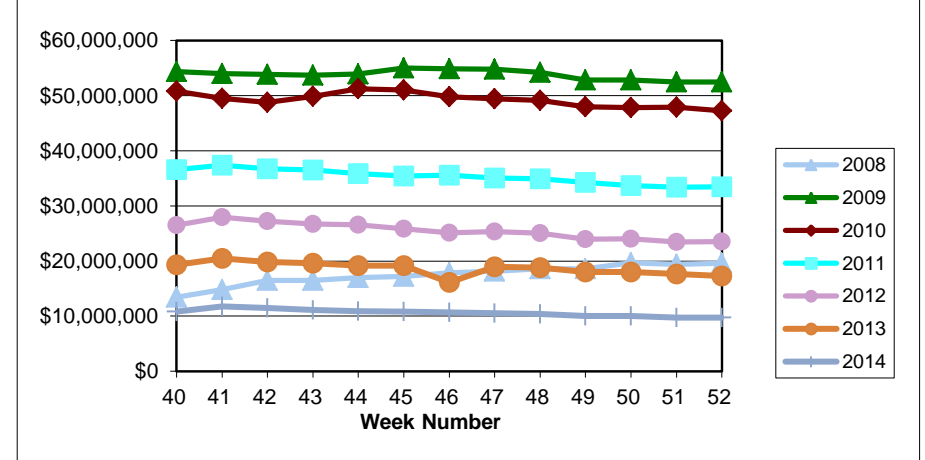


Benefits Paid - By Program
Total: \$10,043,569

Weeks Claimed - By Program
Total: 32,405



Total Benefits Paid: \$10,043,569 (During Week)



⁶ Other Programs Include AB, TRA, TAA, WS, TUI, SUD, SEA

For current and historic UI reports, visit:



<http://www.oregon.gov/EMPLOY/BUDGET/UI/Pages/index.aspx>



(503) 947-1350

