

# UNEMPLOYMENT INSURANCE WEEKLY STATISTICS

State of Oregon  
**EMPLOYMENT DEPARTMENT**  
 UI Operations and Program Support

☎ (503) 947-1360  
 ✉ [Stephni.K.Hutton@oregon.gov](mailto:Stephni.K.Hutton@oregon.gov)  
 🌐 [www.oregon.gov](http://www.oregon.gov)

LABOR FORCE DATA		Last Month	Prior Month	Last Year
		January 2015	December 2014	January 2014
Oregon Civilian Labor Force		1,942,700	1,951,265	1,899,924
Total Number Unemployed		128,106	124,532	149,299

UNEMPLOYMENT RATES (CIVILIAN) (%)		Labor Force & Rate Data: <a href="http://www.QualityInfo.org">www.QualityInfo.org</a>		
Total Unemployment:	Oregon	6.60%	6.40%	7.90%
	National	6.10%	5.40%	7.00%
Seasonally Adjusted:	Oregon	6.30%	6.70%	7.20%
	National	5.70%	5.60%	6.60%

Week # :	5		THIS WEEK		LAST WEEK		Last Month	Prior Month	Last Year
	Ending:	February 7, 2015	2015	2014	2015	2014	January 2015	December 2014	January 2014
<b>UNEMPLOYMENT RATES (%)</b>									
<b>Insured Unemployment: Oregon</b>		2.49	3.21	2.42	3.19	2.33	2.79	3.74	
EB Trigger <sup>1</sup>		2.38	2.93	2.35	2.87				
Adjusted Insured Unemployment		2.90	3.66	2.85	3.60				
National Average TUR <sup>2</sup>		6.90	7.30	6.90	7.60				
<b>REGULAR CLAIMS (UI, UCFE, UCX)</b>									
<b>Initial Claims (Excl. Liable) <sup>3</sup></b>		<b>6,241</b>	<b>6,051</b>	<b>6,645</b>	<b>7,138</b>	<b>28,812</b>	<b>36,121</b>	<b>42,250</b>	
Oregon - New		3,559	3,204	4,258	4,517	17,677	16,253	24,002	
Additional		2,682	2,847	2,387	2,621	9,973	19,868	17,932	
Interstate - Agent		0	0	0	0	1,162	0	316	
Interstate - Liable		179	210	219	368	935	1,135	1,419	
<b>Weeks Claimed (Excl. Liable) <sup>3</sup></b>		<b>39,080</b>	<b>50,058</b>	<b>39,412</b>	<b>49,677</b>	<b>179,335</b>	<b>209,740</b>	<b>267,417</b>	
Oregon		39,080	50,058	39,412	49,677	168,468	196,450	263,944	
Interstate - Agent		0	0	0	0	10,867	13,290	3,473	
Interstate - Liable		2,064	2,377	2,100	2,386	8,351	10,208	12,132	
<b>New Combined Wage Claims</b>		<b>179</b>	<b>255</b>	<b>215</b>	<b>226</b>	<b>688</b>	<b>781</b>	<b>973</b>	
<b>Non-monetary Determinations &amp; Redeter.</b>		<b>1,566</b>	<b>2,537</b>	<b>1,944</b>	<b>2,181</b>	<b>7,853</b>	<b>9,074</b>	<b>11,321</b>	
<b>PAYMENTS: REGULAR BENEFITS</b>									
First Payments		2,450	3,551	3,026	4,157	13,393	13,721	22,087	
Payments Issued		38,786	49,737	39,604	48,397	160,988	185,956	256,705	
Gross Amount of Payments (\$) <sup>3</sup>		\$12,005,632	14,320,514	\$12,230,285	13,957,525	\$50,191,503	\$57,981,450	74,961,137	
Average Check Amount (\$) <sup>3</sup>		\$310	288	\$309	288	<b>\$312</b>	<b>\$312</b>	<b>292</b>	
Number Exhausting Benefits		637	832	660	910	2,812	3,964	4,857	
<b>TRUST FUND</b>									
Balance (in Millions) (\$)		\$2,398.08	\$1,796.83	\$2,290.7	\$1,794.57	\$2,290.7	\$2,301.06	\$1,796.83	

<sup>1</sup> EB Trigger Graph: <http://www.oregon.gov/EMPLOY/Agency/Documents/Current%20Unemployment%20Insurance%20Reports/IUR.pdf>  
<sup>2</sup> NTUR: Unemployment Compensation Amendment Of 1992 specifies that a 2 month average NTUR be used to determine duration levels. <sup>3</sup> Excludes WORKSHARE program

For current and historic UI reports, visit: <http://www.oregon.gov/EMPLOY/Agency/Pages/UI-Reports.aspx>

<b>Week # :</b>	5
<b>Ending:</b>	February 7, 2015

	This Week	Last Week	Cumulative YTD
<b>EXTENDED BENEFITS (EB)</b>			
Initial Claims (Excl. Liable)	0	0	1
Weeks Claimed (Excl. Liable)	0	0	0
Gross Amount of Payments (\$)	\$0	\$0	\$0
Number Exhausting Benefits	0	0	0

Oregon HEB Trigger "OFF" 04/07/2012.

[http://www.workforcesecurity.doleta.gov/unemploy/claims\\_arch.asp](http://www.workforcesecurity.doleta.gov/unemploy/claims_arch.asp)

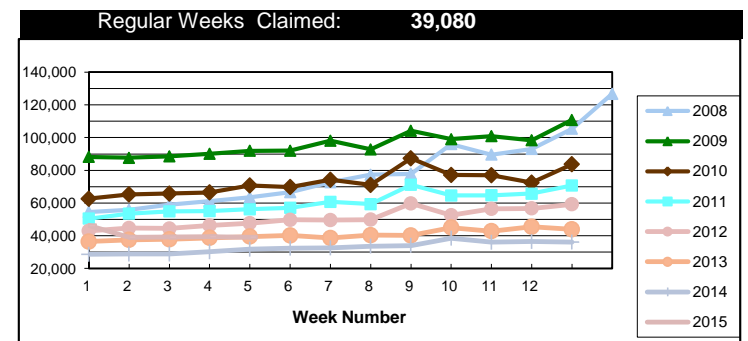
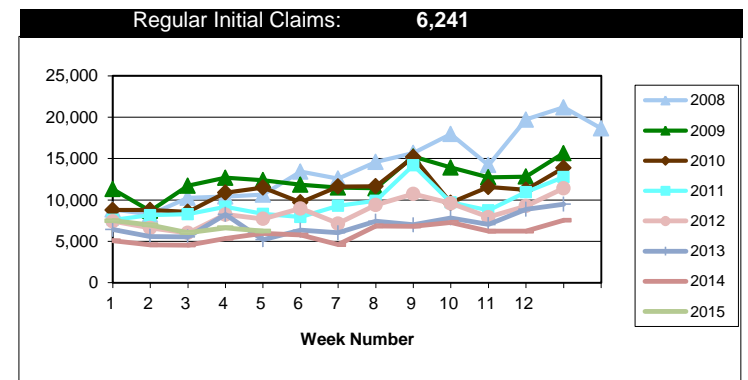
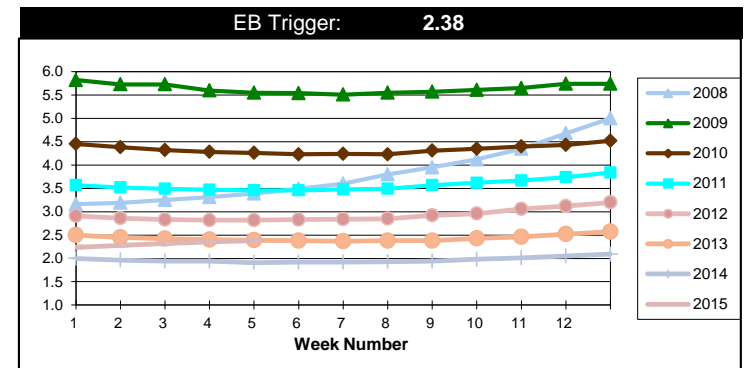
<b>Misc Additional Benefits (AB)</b>			
Initial Claims (Excl. Liable)	0	0	0
Weeks Claimed (Excl. Liable)	3	6	9
Gross Amount of Payments (\$)	0	0	\$0
Number Exhausting Benefits	0	0	0

<b>TRADE ADJUSTMENT ACT (TRA)</b>			
Training Plans	0	0	10
Initial Claims	21	9	39
Weeks Claimed	412	437	2,141
Gross Amount of TRA Payments (\$)	\$188,168	\$197,748	\$975,348
Certifications	0	0	0
Gross Amount of A/RTAA Payments (\$)	42,785	142,372	\$358,051

<b>WORKSHARE PROGRAM (WS)</b>			
Initial Claims	150	22	296
Weeks Claimed	346	338	1,898
Gross Amount of Payments (\$)	\$27,984	\$28,398	\$137,011
# of Workshare Plans	138	137	688

<b>TRAINING UI (TUI)</b>			
Applications Accepted	57	53	356
Approved	47	49	314
Weeks Claimed	0	0	0
Gross Amount of Payments (\$)	\$219,379	\$216,156	\$997,282

<b>SUPPLEMENTAL UI for DISLOCATED WORKERS (SUD)</b>			
Initial Claims	21	43	181
Weeks Claimed	582	597	2,958
Gross Amount of Payments (\$)	\$223,935	\$229,590	\$1,110,066



For current and historic UI reports, visit:



<http://www.oregon.gov/EMPLOY/Agency/Pages/UI-Reports.as>



(503) 947-1360



<b>Week # :</b>	<b>5</b>
<b>Ending:</b>	<b>February 7, 2015</b>

<b>SELF EMPLOYMENT (SEA) MONTHLY</b>		<b>January 2015</b>	<b>Cumulative</b>
Referred		69	409
Enrolled		69	409
Completed		45	243
<b>Weeks Claimed</b>	<b>284</b>	<b>1,082</b>	<b>1,366</b>
<b>Gross Amount of Payments (\$)</b>	<b>133,563</b>	<b>\$481,977</b>	<b>\$615,540</b>

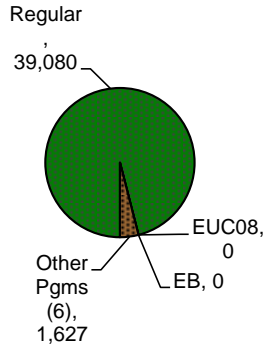
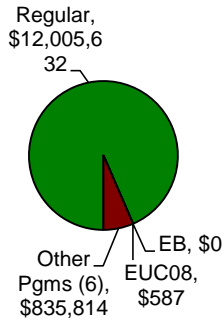
These are MONTHLY counts; data in BOLD is weekly.

<b>EMERGENCY UNEMPLOYMENT COMPENSATION 08 (EUC08)</b>	<b>This Week</b>	<b>Last Week</b>	<b>Cumulative</b>
Initial Claims (Excl. Liable)	0	0	1
Weeks Claimed (Excl. Liable)	0	0	23
Gross Amount of Payments (\$)	\$587	\$232	\$16,913
Number Exhausting Tier 1 Benefits	1	0	3
Number Exhausting Tier 2 Benefits	0	0	0
Number Exhausting Tier Z Benefits (14th week of Tier 2)	0	0	0
Number Exhausting Tier 3 Benefits	0	0	0
Number Exhausting Tier 4 Benefits	0	0	0

EUC began 07/06/2008

**Benefits Paid - By Program**  
**Total: \$12,842,033**

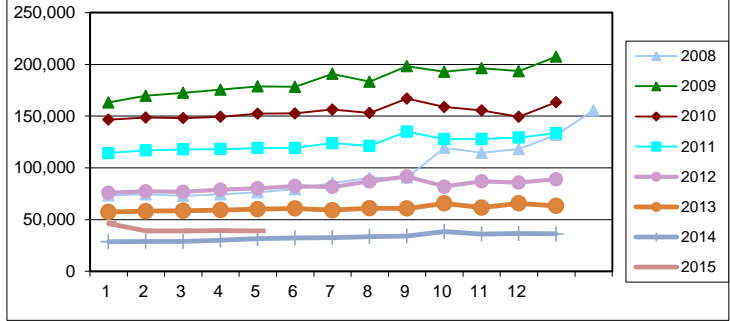
**Weeks Claimed - By Program**  
**Total: 40,707**



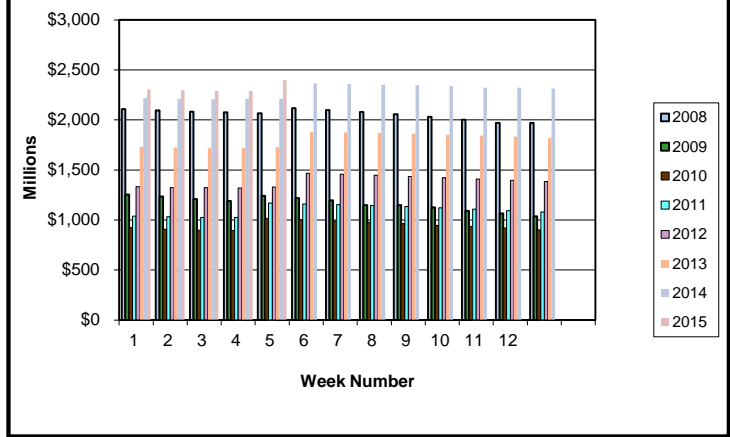
<sup>6</sup> Other Programs Include AB, TRA, TAA, WS, TUI, SUD, SEA  
 For current and historic UI reports, visit:

<http://www.oregon.gov/EMPLOY/Agency/Pages/UI-Reports.aspx>

**Total Weeks Claimed (Reg + EB + EUC + OEB+ Other Pgm: 40,707)**



**Trust Fund Balance: \$2,398.08 (in millions)**



**Total Benefits Paid: \$12,842,033 (During Week)**

