

UNEMPLOYMENT INSURANCE WEEKLY STATISTICS

State of Oregon
EMPLOYMENT DEPARTMENT
 UI Operations and Program Support

(503) 947-1360
Stephni.K.Hutton@oregon.gov
www.oregon.gov

LABOR FORCE DATA		Last Month	Prior Month	Last Year
		January 2015	December 2014	January 2014
Oregon Civilian Labor Force		1,942,700	1,951,265	1,899,924
Total Number Unemployed		128,106	124,532	149,299
UNEMPLOYMENT RATES (CIVILIAN) (%)		Labor Force & Rate Data: www.QualityInfo.org		
Total Unemployment:	Oregon	6.60%	6.40%	7.90%
	National	6.10%	5.40%	7.00%
Seasonally Adjusted:	Oregon	6.30%	6.70%	7.20%
	National	5.70%	5.60%	6.60%

Week # :	6		THIS WEEK		LAST WEEK		Last Month	Prior Month	Last Year
	Ending:	February 14, 2015	2015	2014	2015	2014	January 2015	December 2014	January 2014
UNEMPLOYMENT RATES (%)									
Insured Unemployment: Oregon		2.40	3.17	2.49	3.21	2.33	2.79	3.74	
EB Trigger ¹		2.41	2.98	2.38	2.93				
Adjusted Insured Unemployment		2.92	3.72	2.90	3.66				
National Average TUR ²		6.90	7.30	6.90	7.30				
REGULAR CLAIMS (UI, UCFE, UCX)									
Initial Claims (Excl. Liable) ³		5,748	6,144	6,241	6,051	28,812	36,121	42,250	
Oregon - New		2,870	3,097	3,559	3,204	17,677	16,253	24,002	
Additional		2,878	3,047	2,682	2,847	9,973	19,868	17,932	
Interstate - Agent		0	0	0	0	1,162	0	316	
Interstate - Liable		202	210	179	210	935	1,135	1,419	
Weeks Claimed (Excl. Liable) ³		40,116	49,482	39,080	50,058	179,335	209,740	267,417	
Oregon		40,116	49,482	39,080	50,058	168,468	196,450	263,944	
Interstate - Agent		0	0	0	0	10,867	13,290	3,473	
Interstate - Liable		2,032	2,326	2,064	2,377	8,351	10,208	12,132	
New Combined Wage Claims		145	191	179	255	688	781	973	
Non-monetary Determinations & Redeter.		1,725	1,970	1,566	2,537	7,853	9,074	11,321	
PAYMENTS: REGULAR BENEFITS									
First Payments		2,517	3,012	2,450	3,551	13,393	13,721	22,087	
Payments Issued		39,657	49,253	38,786	49,737	160,988	185,956	256,705	
Gross Amount of Payments (\$) ³		\$12,344,236	14,241,869	\$12,005,632	14,320,514	\$50,191,503	\$57,981,450	74,961,137	
Average Check Amount (\$) ³		\$311	289	\$310	288	\$312	\$312	292	
Number Exhausting Benefits		703	837	637	832	2,812	3,964	4,857	
TRUST FUND									
Balance (in Millions) (\$)		\$2,397.09	\$1,899.66	\$2,398.08	\$1,796.83	\$2,290.7	\$2,301.06	\$1,796.83	

¹ EB Trigger Graph: <http://www.oregon.gov/EMPLOY/Agency/Documents/Current%20Unemployment%20Insurance%20Reports/IUR.pdf>
² NTUR: Unemployment Compensation Amendment Of 1992 specifies that a 2 month average NTUR be used to determine duration levels. ³ Excludes WORKSHARE program

For current and historic UI reports, visit: <http://www.oregon.gov/EMPLOY/Agency/Pages/UI-Reports.aspx>

Week # :	6
Ending:	February 14, 2015

	This Week	Last Week	Cumulative YTD
EXTENDED BENEFITS (EB)			
Initial Claims (Excl. Liable)	0	0	1
Weeks Claimed (Excl. Liable)	0	0	0
Gross Amount of Payments (\$)	\$0	\$0	\$0
Number Exhausting Benefits	0	0	0

Oregon HEB Trigger "OFF" 04/07/2012.

http://www.workforcesecurity.doleta.gov/unemploy/claims_arch.asp

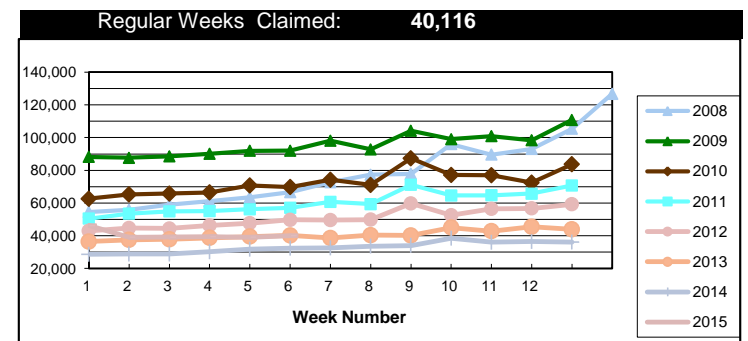
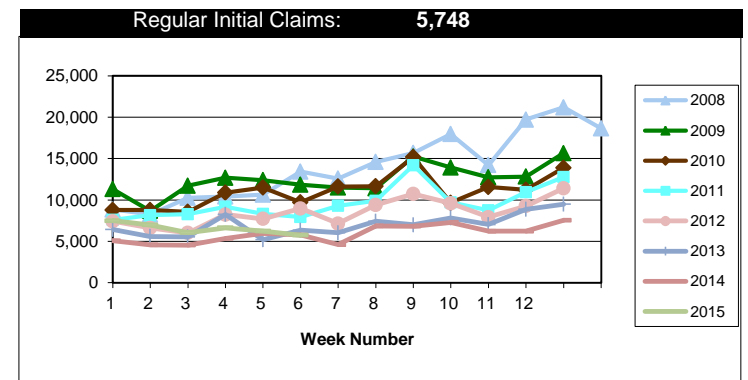
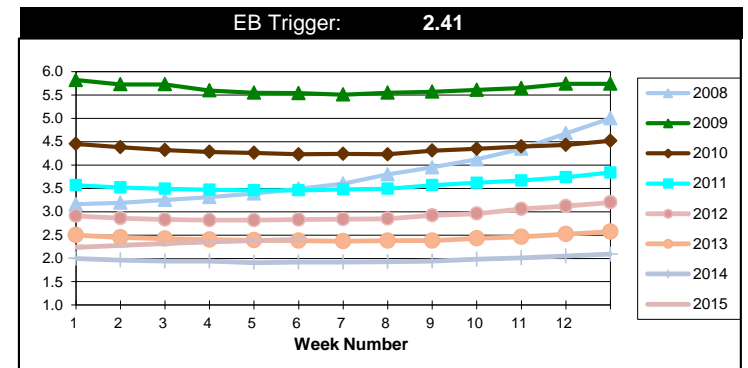
Misc Additional Benefits (AB)			
Initial Claims (Excl. Liable)	0	0	0
Weeks Claimed (Excl. Liable)	5	3	14
Gross Amount of Payments (\$)	0	0	\$0
Number Exhausting Benefits	0	0	0

TRADE ADJUSTMENT ACT (TRA)			
Training Plans	2	0	12
Initial Claims	2	21	41
Weeks Claimed	436	412	2,577
Gross Amount of TRA Payments (\$)	\$193,538	\$188,168	\$1,168,886
Certifications	0	0	0
Gross Amount of A/RTAA Payments (\$)	125,300	42,785	\$483,351

WORKSHARE PROGRAM (WS)			
Initial Claims	24	150	320
Weeks Claimed	324	346	2,222
Gross Amount of Payments (\$)	\$29,851	\$27,984	\$166,862
# of Workshare Plans	138	138	826

TRAINING UI (TUI)			
Applications Accepted	69	57	425
Approved	55	47	369
Weeks Claimed	0	0	0
Gross Amount of Payments (\$)	\$208,358	\$219,379	\$1,205,640

SUPPLEMENTAL UI for DISLOCATED WORKERS (SUD)			
Initial Claims	29	21	210
Weeks Claimed	583	582	3,541
Gross Amount of Payments (\$)	\$223,055	\$223,935	\$1,333,121



For current and historic UI reports, visit:



<http://www.oregon.gov/EMPLOY/Agency/Pages/UI-Reports.as>



(503) 947-1360



Week # :	6
Ending:	February 14, 2015

SELF EMPLOYMENT (SEA) MONTHLY		January 2015	Cumulative
Referred		69	409
Enrolled		69	409
Completed		45	243
Weeks Claimed	281	1,082	1,647
Gross Amount of Payments (\$)	119,431	\$481,977	\$734,971

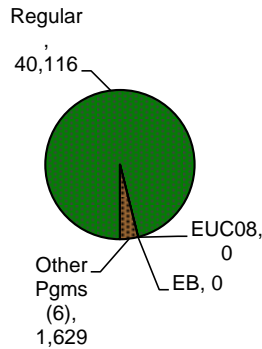
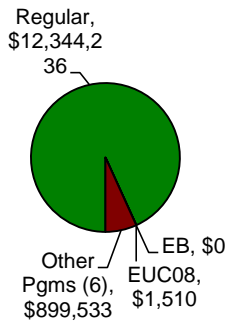
These are MONTHLY counts; data in BOLD is weekly.

EMERGENCY UNEMPLOYMENT COMPENSATION 08 (EUC08)	This Week	Last Week	Cumulative
Initial Claims (Excl. Liable)	0	0	1
Weeks Claimed (Excl. Liable)	0	0	23
Gross Amount of Payments (\$)	\$1,510	\$587	\$18,423
Number Exhausting Tier 1 Benefits	0	1	3
Number Exhausting Tier 2 Benefits	0	0	0
Number Exhausting Tier Z Benefits (14th week of Tier 2)	0	0	0
Number Exhausting Tier 3 Benefits	0	0	0
Number Exhausting Tier 4 Benefits	0	0	0

EUC began 07/06/2008

Benefits Paid - By Program
Total: \$13,245,279

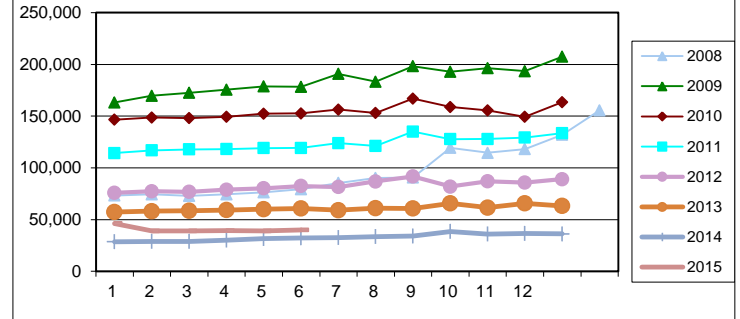
Weeks Claimed - By Program
Total: 41,745



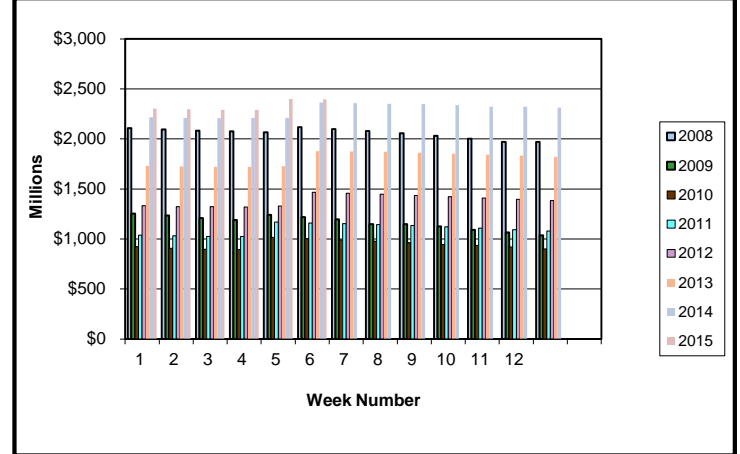
⁶ Other Programs Include AB, TRA, TAA, WS, TUI, SUD, SEA
 For current and historic UI reports, visit:

<http://www.oregon.gov/EMPLOY/Agency/Pages/UI-Reports.aspx>

Total Weeks Claimed (Reg + EB + EUC + OEB+ Other Pgm: 41,745)



Trust Fund Balance: \$2,397.09 (in millions)



Total Benefits Paid: \$13,245,279 (During Week)

