

# UNEMPLOYMENT INSURANCE WEEKLY STATISTICS

State of Oregon  
**EMPLOYMENT DEPARTMENT**  
 UI Operations and Program Support

☎ (503) 947-1360  
 ✉ [Stepheni.K.Hutton@oregon.gov](mailto:Stepheni.K.Hutton@oregon.gov)  
 🌐 [www.oregon.gov](http://www.oregon.gov)

LABOR FORCE DATA		Last Month	Prior Month	Last Year
		April 2015	March 2015	April 2014
Oregon Civilian Labor Force		1,920,287	1,932,861	1,919,526
Total Number Unemployed		100,188	112,606	132,308

UNEMPLOYMENT RATES (CIVILIAN) (%)		Labor Force & Rate Data: <a href="http://www.QualityInfo.org">www.QualityInfo.org</a>		
Total Unemployment:	Oregon	5.20%	5.80%	6.90%
	National	5.10%	5.60%	5.90%
Seasonally Adjusted:	Oregon	5.20%	5.40%	7.00%
	National	5.40%	5.50%	6.20%

Week # :	Ending:	THIS WEEK		LAST WEEK		Last Month	Prior Month	Last Year
		2015	2014	2015	2014	April 2015	March 2015	April 2014
21	May 30, 2015							
<b>UNEMPLOYMENT RATES (%)</b>								
<b>Insured Unemployment: Oregon</b>		1.80	2.22	1.80	2.28	2.44	2.04	3.02
EB Trigger <sup>1</sup>		1.98	2.58	2.01	2.65			
Adjusted Insured Unemployment		2.51	3.26	2.55	3.33			
National Average TUR <sup>2</sup>		5.50	6.90	5.80	6.90			
<b>REGULAR CLAIMS (UI, UCFE, UCX)</b>								
<b>Initial Claims (Excl. Liable) <sup>3</sup></b>		<b>3,488</b>	<b>4,311</b>	<b>4,430</b>	<b>4,941</b>	<b>24,841</b>	<b>19,932</b>	<b>27,429</b>
Oregon - New		1,394	2,244	2,136	2,772	12,134	9,570	13,247
Additional		2,094	2,067	2,294	2,169	11,508	9,395	14,182
Interstate - Agent		0	0	0	0	1,199	967	0
Interstate - Liable		139	189	385	180	920	696	1,079
<b>Weeks Claimed (Excl. Liable) <sup>3</sup></b>		<b>29,245</b>	<b>35,199</b>	<b>29,832</b>	<b>36,073</b>	<b>180,796</b>	<b>156,894</b>	<b>219,356</b>
Oregon		29,245	35,199	29,832	36,073	169,492	146,763	205,478
Interstate - Agent		0	0	0	0	11,304	10,131	13,878
Interstate - Liable		1,445	1,725	1,470	1,808	8,711	7,542	9,761
<b>New Combined Wage Claims</b>		<b>60</b>	<b>88</b>	<b>118</b>	<b>119</b>	<b>499</b>	<b>460</b>	<b>572</b>
<b>Non-monetary Determinations &amp; Redeter.</b>		<b>1,557</b>	<b>1,805</b>	<b>1,868</b>	<b>1,818</b>	<b>9,787</b>	<b>7,551</b>	<b>9,650</b>
<b>PAYMENTS: REGULAR BENEFITS</b>								
First Payments		1,503	878	1,763	1,738	7,359	8,544	10,001
Payments Issued		29,175	35,516	30,096	36,831	30,394	145,079	201,414
Gross Amount of Payments (\$) <sup>3</sup>		\$9,411,897	10,665,194	\$9,663,031	11,010,858	\$9,774,740	\$45,199,421	59,596,050
Average Check Amount (\$) <sup>3</sup>		\$323	300	\$321	299	<b>\$322</b>	<b>\$312</b>	<b>296</b>
Number Exhausting Benefits		722	191	662	958	3,015	3,357	4,517
<b>TRUST FUND</b>								
Balance (in Millions) (\$)		\$2,595.59	\$2,087.45	\$2,593.35	\$2,095.55	\$2,348.14	\$2,341.15	\$1,826.6

<sup>1</sup> EB Trigger Graph: <http://www.oregon.gov/EMPLOY/Agency/Documents/Current%20Unemployment%20Insurance%20Reports/IUR.pdf>  
<sup>2</sup> NTUR: Unemployment Compensation Amendment Of 1992 specifies that a 2 month average NTUR be used to determine duration levels. <sup>3</sup> Excludes WORKSHARE program

For current and historic UI reports, visit: <http://www.oregon.gov/EMPLOY/Agency/Pages/UI-Reports.aspx>

<b>Week # :</b>	21
<b>Ending:</b>	May 30, 2015

	This Week	Last Week	Cumulative YTD
<b>EXTENDED BENEFITS (EB)</b>			
Initial Claims (Excl. Liable)	0	0	1
Weeks Claimed (Excl. Liable)	0	0	0
Gross Amount of Payments (\$)	\$0	\$0	\$0
Number Exhausting Benefits	0	0	0

Oregon HEB Trigger "OFF" 04/07/2012.

[http://www.workforcesecurity.doleta.gov/unemploy/claims\\_arch.asp](http://www.workforcesecurity.doleta.gov/unemploy/claims_arch.asp)

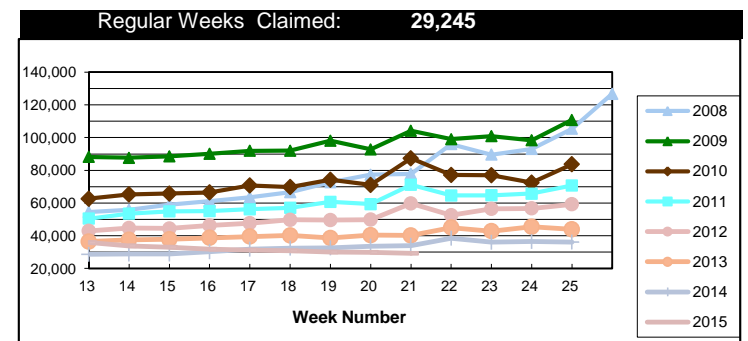
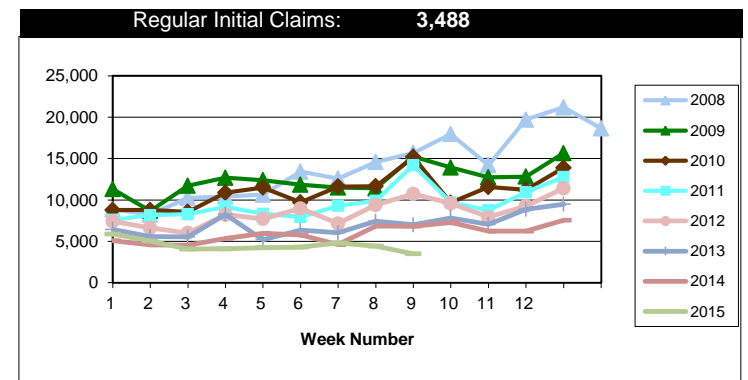
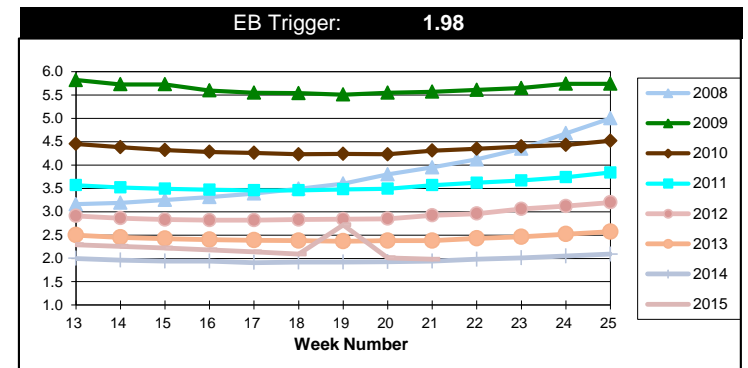
<b>Misc Additional Benefits (AB)</b>			
Initial Claims (Excl. Liable)	0	0	2
Weeks Claimed (Excl. Liable)	5	8	108
Gross Amount of Payments (\$)	0	0	\$0
Number Exhausting Benefits	0	0	0

<b>TRADE ADJUSTMENT ACT (TRA)</b>			
Training Plans	3	0	37
Initial Claims	3	1	161
Weeks Claimed	358	352	8,425
Gross Amount of TRA Payments (\$)	\$161,730	\$159,901	\$3,810,231
Certifications	0	0	2
Gross Amount of A/RTAA Payments (\$)	84,608	102,854	\$2,188,149

<b>WORKSHARE PROGRAM (WS)</b>			
Initial Claims	30	57	825
Weeks Claimed	239	200	5,873
Gross Amount of Payments (\$)	\$21,153	\$19,733	\$538,420
# of Workshare Plans	146	144	2,997

<b>TRAINING UI (TUI)</b>			
Applications Accepted	47	35	1,249
Approved	39	34	1,080
Weeks Claimed	1,028	1,060	9,850
Gross Amount of Payments (\$)	\$179,152	\$180,322	\$4,137,859

<b>SUPPLEMENTAL UI for DISLOCATED WORKERS (SUD)</b>			
Initial Claims	29	26	612
Weeks Claimed	482	954	11,831
Gross Amount of Payments (\$)	\$180,449	\$186,604	\$4,109,348



For current and historic UI reports, visit:



<http://www.oregon.gov/EMPLOY/Agency/Pages/UI-Reports.as>



(503) 947-1360



<b>Week # :</b>	21
<b>Ending:</b>	May 30, 2015

<b>SELF EMPLOYMENT (SEA) MONTHLY</b>		April 2015	Cumulative
Referred		109	409
Enrolled		109	409
Completed		52	243
<b>Weeks Claimed</b>	<b>378</b>	<b>1,662</b>	<b>6,609</b>
<b>Gross Amount of Payments (\$)</b>	<b>164,438</b>	<b>\$166,075</b>	<b>\$2,938,775</b>

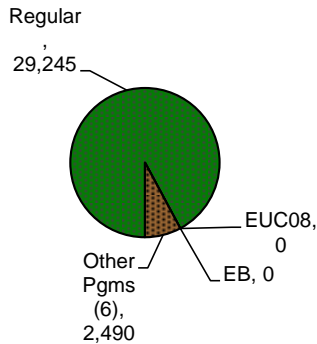
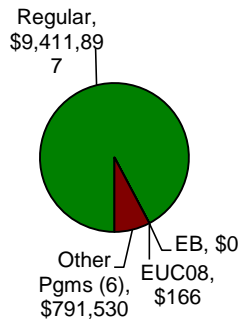
These are MONTHLY counts; data in BOLD is weekly.

<b>EMERGENCY UNEMPLOYMENT COMPENSATION 08 (EUC08)</b>	This Week	Last Week	Cumulative
Initial Claims (Excl. Liable)	0	1	5
Weeks Claimed (Excl. Liable)	0	0	25
Gross Amount of Payments (\$)	\$166	\$0	\$24,418
Number Exhausting Tier 1 Benefits	0	0	3
Number Exhausting Tier 2 Benefits	0	0	0
Number Exhausting Tier Z Benefits (14th week of Tier 2)	0	0	0
Number Exhausting Tier 3 Benefits	0	0	0
Number Exhausting Tier 4 Benefits	0	0	0

EUC began 07/06/2008

**Benefits Paid - By Program**  
Total: **\$10,203,593**

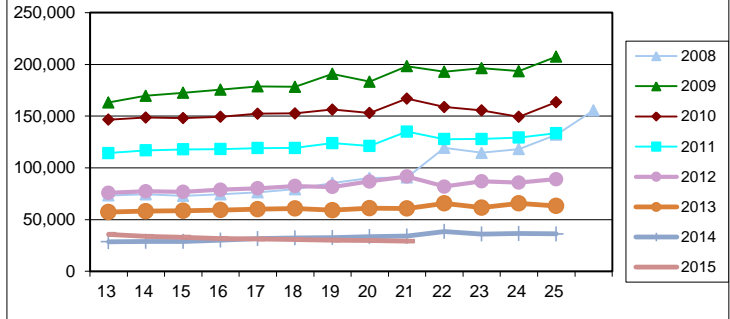
**Weeks Claimed - By Program**  
Total: **31,735**



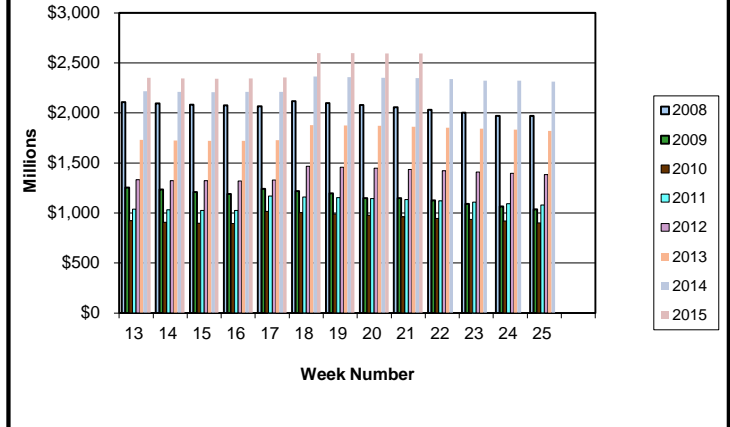
<sup>6</sup> Other Programs Include AB, TRA, TAA, WS, TUI, SUD, SEA  
For current and historic UI reports, visit:

<http://www.oregon.gov/EMPLOY/Agency/Pages/UI-Reports.aspx>

**Total Weeks Claimed (Reg + EB + EUC + OEB+ Other Pgm: 31,735)**



**Trust Fund Balance: \$2,595.59 (in millions)**



**Total Benefits Paid: \$10,203,593 (During Week)**

