

UNEMPLOYMENT INSURANCE WEEKLY STATISTICS

State of Oregon
EMPLOYMENT DEPARTMENT
 UI Operations and Program Support

☎ (503) 947-1360
 ✉ Stephni.K.Hutton@oregon.gov
 🌐 www.oregon.gov

LABOR FORCE DATA		Last Month	Prior Month	Last Year
		May 2015	April 2015	May 2014
Oregon Civilian Labor Force		1,922,951	1,920,218	1,926,409
Total Number Unemployed		101,888	100,522	127,259
UNEMPLOYMENT RATES (CIVILIAN) (%)		Labor Force & Rate Data: www.QualityInfo.org		
Total Unemployment:	Oregon	5.30%	5.20%	6.60%
	National	5.30%	5.10%	6.10%
Seasonally Adjusted:	Oregon	5.30%	5.20%	7.00%
	National	5.50%	5.40%	6.30%

Week # :	22		THIS WEEK		LAST WEEK		Last Month	Prior Month	Last Year
	Ending:	June 6, 2015	2015	2014	2015	2014	May 2015	April 2015	May 2014
UNEMPLOYMENT RATES (%)									
Insured Unemployment: Oregon		1.74	2.13	1.80	2.22	1.70	2.44	2.07	
EB Trigger ¹		1.94	2.51	1.98	2.58				
Adjusted Insured Unemployment		2.48	3.19	2.51	3.26				
National Average TUR ²		5.50	6.90	5.50	6.90				
REGULAR CLAIMS (UI, UCFE, UCX)									
Initial Claims (Excl. Liable) ³		5,489	3,834	3,488	4,311	18,081	24,841	17,548	
Oregon - New		3,340	1,601	1,394	2,244	8,793	12,134	8,844	
Additional		2,149	2,233	2,094	2,067	8,448	11,508	8,704	
Interstate - Agent		0	0	0	0	840	1,199	0	
Interstate - Liable		188	167	139	189	839	920	711	
Weeks Claimed (Excl. Liable) ³		29,027	33,575	29,245	35,199	130,680	180,796	154,406	
Oregon		29,027	33,575	29,245	35,199	122,361	169,492	144,792	
Interstate - Agent		0	0	0	0	8,319	11,304	9,614	
Interstate - Liable		1,400	1,725	1,445	1,725	6,073	8,711	7,086	
New Combined Wage Claims		96	128	60	88	403	499	457	
Non-monetary Determinations & Redeter.		1,700	1,398	1,557	1,805	6,735	9,787	6,914	
PAYMENTS: REGULAR BENEFITS									
First Payments		1,669	1,510	1,503	878	6,651	7,359	5,994	
Payments Issued		29,577	34,280	29,175	35,516	29,577	30,394	144,273	
Gross Amount of Payments (\$) ³		\$9,635,653	10,348,429	\$9,411,897	10,665,194	\$9,635,653	\$9,774,740	43,256,288	
Average Check Amount (\$) ³		\$326	302	\$323	300	\$326	\$322	300	
Number Exhausting Benefits		625	798	722	191	2,785	3,015	2,823	
TRUST FUND									
Balance (in Millions) (\$)		\$2,584.36	\$2,081.79	\$2,595.59	\$2,087.45	\$2,595.59	\$2,348.14	\$2,081.79	

¹ EB Trigger Graph: <http://www.oregon.gov/EMPLOY/Agency/Documents/Current%20Unemployment%20Insurance%20Reports/IUR.pdf>
² NTUR: Unemployment Compensation Amendment Of 1992 specifies that a 2 month average NTUR be used to determine duration levels. ³ Excludes WORKSHARE program

For current and historic UI reports, visit: <http://www.oregon.gov/EMPLOY/Agency/Pages/UI-Reports.aspx>

Week # :	22
Ending:	June 6, 2015

	This Week	Last Week	Cumulative YTD
EXTENDED BENEFITS (EB)			
Initial Claims (Excl. Liable)	0	0	1
Weeks Claimed (Excl. Liable)	0	0	0
Gross Amount of Payments (\$)	\$0	\$0	\$0
Number Exhausting Benefits	0	0	0

Oregon HEB Trigger "OFF" 04/07/2012.

http://www.workforcesecurity.doleta.gov/unemploy/claims_arch.asp

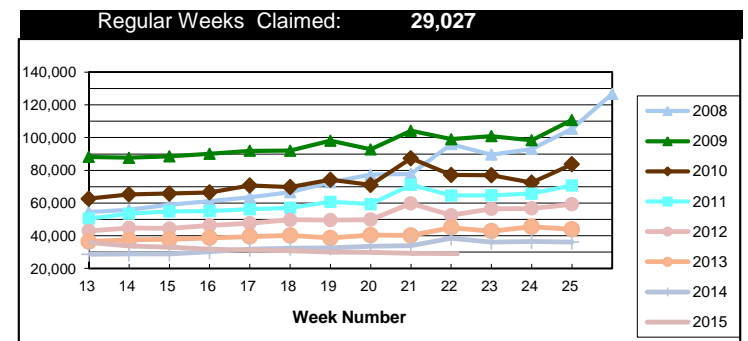
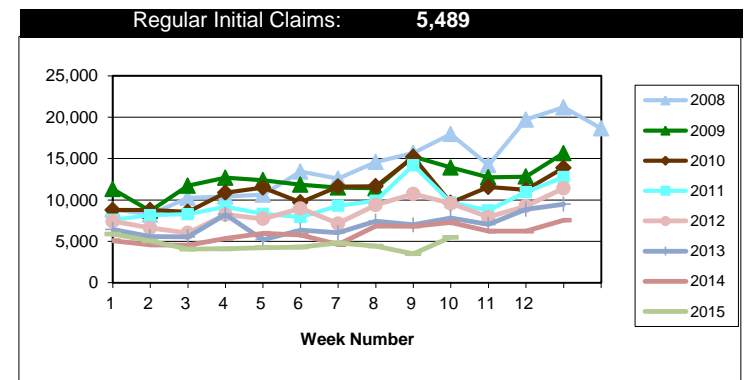
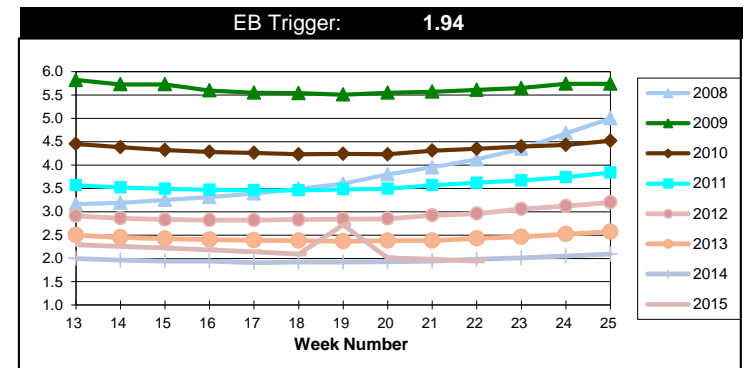
Misc Additional Benefits (AB)			
Initial Claims (Excl. Liable)	0	0	2
Weeks Claimed (Excl. Liable)	4	5	112
Gross Amount of Payments (\$)	0	0	\$0
Number Exhausting Benefits	0	0	0

TRADE ADJUSTMENT ACT (TRA)			
Training Plans	1	3	38
Initial Claims	16	3	177
Weeks Claimed	357	358	8,782
Gross Amount of TRA Payments (\$)	\$162,260	\$161,730	\$3,972,491
Certifications	0	0	2
Gross Amount of A/RTAA Payments (\$)	73,298	84,608	\$2,261,447

WORKSHARE PROGRAM (WS)			
Initial Claims	32	30	857
Weeks Claimed	150	239	6,023
Gross Amount of Payments (\$)	\$12,957	\$21,153	\$551,377
# of Workshare Plans	149	146	3,146

TRAINING UI (TUI)			
Applications Accepted	21	47	1,270
Approved	17	39	1,097
Weeks Claimed	1,021	1,028	10,871
Gross Amount of Payments (\$)	\$168,518	\$179,152	\$4,306,377

SUPPLEMENTAL UI for DISLOCATED WORKERS (SUD)			
Initial Claims	25	29	637
Weeks Claimed	492	482	12,323
Gross Amount of Payments (\$)	\$186,847	\$180,449	\$4,296,195



For current and historic UI reports, visit:



<http://www.oregon.gov/EMPLOY/Agency/Pages/UI-Reports.as>



(503) 947-1360



Week # :	22
Ending:	June 6, 2015

SELF EMPLOYMENT (SEA) MONTHLY		May 2015	Cumulative
Referred		73	409
Enrolled		73	409
Completed		51	243
Weeks Claimed	383	1,488	6,992
Gross Amount of Payments (\$)	167,094	\$167,094	\$3,105,869

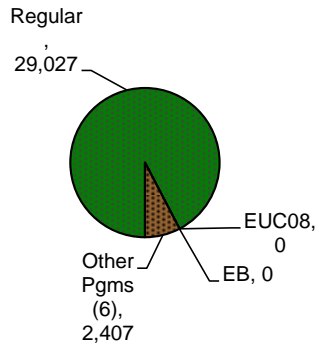
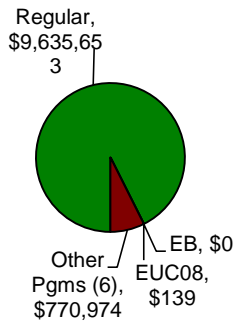
These are MONTHLY counts; data in BOLD is weekly.

EMERGENCY UNEMPLOYMENT COMPENSATION 08 (EUC08)	This Week	Last Week	Cumulative
Initial Claims (Excl. Liable)	0	0	5
Weeks Claimed (Excl. Liable)	0	0	25
Gross Amount of Payments (\$)	\$139	\$166	\$24,557
Number Exhausting Tier 1 Benefits	0	0	3
Number Exhausting Tier 2 Benefits	0	0	0
Number Exhausting Tier Z Benefits (14th week of Tier 2)	0	0	0
Number Exhausting Tier 3 Benefits	0	0	0
Number Exhausting Tier 4 Benefits	0	0	0

EUC began 07/06/2008

Benefits Paid - By Program
Total: \$10,406,766

Weeks Claimed - By Program
Total: 31,434



⁶ Other Programs Include AB, TRA, TAA, WS, TUI, SUD, SEA
 For current and historic UI reports, visit:

<http://www.oregon.gov/EMPLOY/Agency/Pages/UI-Reports.aspx>

