

# UNEMPLOYMENT INSURANCE WEEKLY STATISTICS

State of Oregon  
**EMPLOYMENT DEPARTMENT**  
 UI Operations and Program Support

 (503) 947-1360  
 [Stephni.K.Hutton@oregon.gov](mailto:Stephni.K.Hutton@oregon.gov)  
 [www.oregon.gov](http://www.oregon.gov)

LABOR FORCE DATA		Last Month	Prior Month	Last Year
		August 2015	July 2015	August 2014
Oregon Civilian Labor Force		1,961,353	1,957,689	1,968,689
Total Number Unemployed		116,156	122,998	135,770
UNEMPLOYMENT RATES (CIVILIAN) (%)		Labor Force & Rate Data: <a href="http://www.QualityInfo.org">www.QualityInfo.org</a>		
Total Unemployment:	Oregon	5.90%	6.30%	6.90%
	National	5.20%	5.60%	6.30%
Seasonally Adjusted:	Oregon	6.10%	5.90%	6.90%
	National	5.10%	5.30%	6.10%

Week # :	36	THIS WEEK		LAST WEEK		Last Month	Prior Month	Last Year
Ending:	September 12, 2015	2015	2014	2015	2014	August 2015	July 2015	August 2014
<b>UNEMPLOYMENT RATES (%)</b>								
Insured Unemployment: Oregon	1.60	1.94	1.64	1.99	1.64	2.11	1.86	
EB Trigger <sup>1</sup>	1.75	2.10	1.76	2.12				
Adjusted Insured Unemployment	2.24	2.71	2.25	2.77				
National Average TUR <sup>2</sup>	5.60	6.90	5.60	6.90				
<b>REGULAR CLAIMS (UI, UCFE, UCX)</b>								
Initial Claims (Excl. Liable) <sup>3</sup>	3,845	3,597	3,512	4,298	17,589	23,481	17,151	
Oregon - New	2,134	1,577	1,719	2,392	9,349	12,407	9,967	
Additional	1,711	2,020	1,793	1,906	7,444	10,039	7,184	
Interstate - Agent	0	0	0	0	796	1,035	0	
Interstate - Liable	146	155	141	183	573	810	800	
Weeks Claimed (Excl. Liable) <sup>3</sup>	26,572	30,287	28,200	31,194	125,161	160,752	137,668	
Oregon	26,572	30,287	28,200	31,194	117,490	151,361	129,543	
Interstate - Agent	0	0	0	0	7,671	9,391	8,125	
Interstate - Liable	1,247	1,690	1,310	1,708	5,383	7,000	6,850	
New Combined Wage Claims	67	81	97	83	361	433	396	
Non-monetary Determinations & Redeter.	1,404	1,561	2,126	2,010	7,780	8,426	7,762	
<b>PAYMENTS: REGULAR BENEFITS</b>								
First Payments	1,390	1,491	1,794	1,522	7,867	7,963	6,606	
Payments Issued	25,627	29,765	28,397	30,797	28,397	28,898	126,247	
Gross Amount of Payments (\$) <sup>3</sup>	\$8,570,941	9,261,725	\$9,270,533	9,476,608	\$9,270,533	\$9,428,736	38,783,160	
Average Check Amount (\$) <sup>3</sup>	\$334	311	\$326	308	\$326	\$326	307	
Number Exhausting Benefits	599	676	555	688	2,907	2,578	2,711	
<b>TRUST FUND</b>								
Balance (in Millions) (\$)	\$2,742.38	\$2,233.52	\$2,749.13	\$2,240.08	\$2,756.06	\$2,583.18	\$2,240.08	

<sup>1</sup> EB Trigger Graph:

<http://www.oregon.gov/EMPLOY/Agency/Documents/Current%20Unemployment%20Insurance%20Reports/IUR.pdf>

<sup>2</sup> NTUR: Unemployment Compensation Amendment Of 1992 specifies that a 2 month average NTUR be used to determine duration levels.

<sup>3</sup> Excludes WORKSHARE program

For current and historic UI reports, visit:

<http://www.oregon.gov/EMPLOY/Agency/Pages/UI-Reports.aspx>

<b>Week # :</b>	36
<b>Ending:</b>	September 12, 2015

	This Week	Last Week	Cumulative YTD
<b>EXTENDED BENEFITS (EB)</b>			
Initial Claims (Excl. Liable)	0	0	3
Weeks Claimed (Excl. Liable)	0	0	0
Gross Amount of Payments (\$)	\$0	\$0	\$0
Number Exhausting Benefits	0	0	0

Oregon HEB Trigger "OFF" 04/07/2012.

[http://www.workforcesecurity.doleta.gov/unemploy/claims\\_arch.asp](http://www.workforcesecurity.doleta.gov/unemploy/claims_arch.asp)

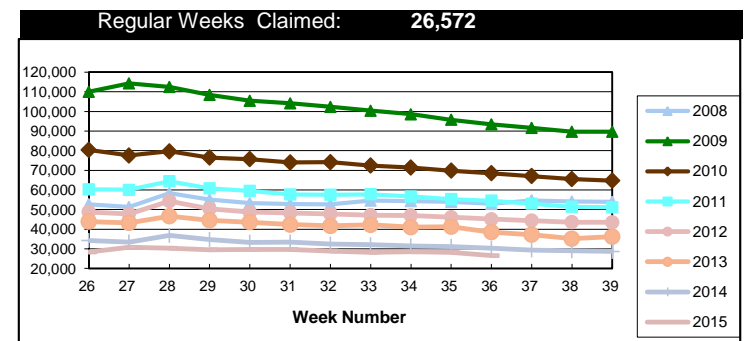
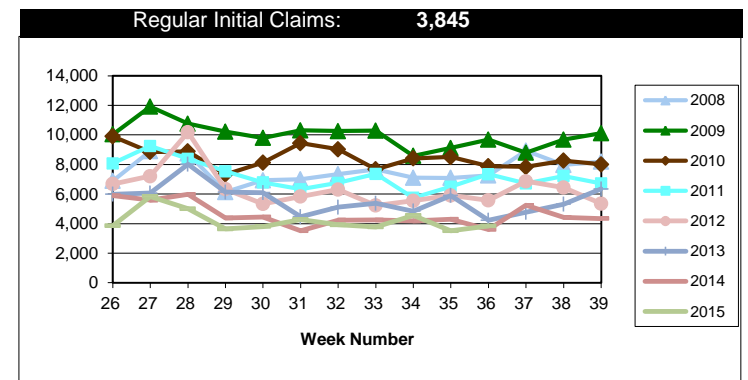
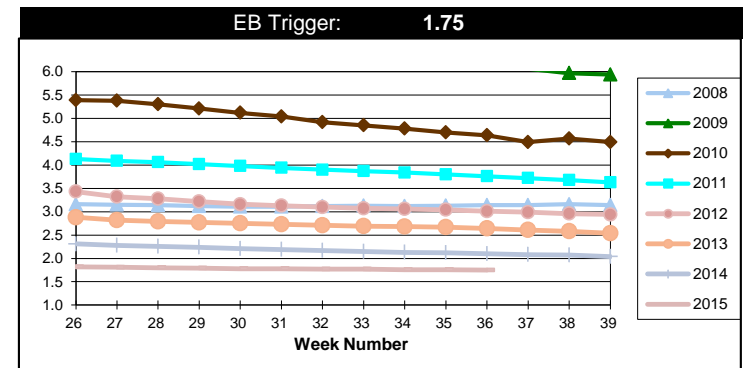
<b>Misc Additional Benefits (AB)</b>			
Initial Claims (Excl. Liable)	0	0	3
Weeks Claimed (Excl. Liable)	3	4	168
Gross Amount of Payments (\$)	0	0	\$0
Number Exhausting Benefits	0	0	0

<b>TRADE ADJUSTMENT ACT (TRA)</b>			
Training Plans	2	11	93
Initial Claims	3	8	321
Weeks Claimed	213	234	12,554
Gross Amount of TRA Payments (\$)	\$96,236	\$105,188	\$5,672,625
Certifications	0	0	3
Gross Amount of A/RTAA Payments (\$)	38,538	18,398	\$3,201,650

<b>WORKSHARE PROGRAM (WS)</b>			
Initial Claims	22	26	1,957
Weeks Claimed	527	661	12,379
Gross Amount of Payments (\$)	\$46,009	\$62,536	\$1,123,512
# of Workshare Plans	158	157	5,289

<b>TRAINING UI (TUI)</b>			
Applications Accepted	56	0	1,856
Approved	53	0	1,616
Weeks Claimed	651	678	21,846
Gross Amount of Payments (\$)	\$108,566	\$115,112	\$6,203,926

<b>SUPPLEMENTAL UI for DISLOCATED WORKERS (SUD)</b>			
Initial Claims	8	26	915
Weeks Claimed	345	356	17,787
Gross Amount of Payments (\$)	\$132,713	\$138,823	\$6,377,369



For current and historic UI reports, visit:



<http://www.oregon.gov/EMPLOY/Agency/Pages/UI-Reports.as>



(503) 947-1360



<b>Week # :</b>	<b>36</b>
<b>Ending:</b>	<b>September 12, 2015</b>

**SELF EMPLOYMENT (SEA) MONTHLY**

		August 2015	Cumulative
Referred		69	636
Enrolled		69	636
Completed		79	449
<b>Weeks Claimed</b>	<b>322</b>	<b>1,408</b>	<b>12,059</b>
<b>Gross Amount of Payments (\$)</b>	<b>142,817</b>	<b>\$635,399</b>	<b>\$5,372,086</b>

These are MONTHLY counts; data in BOLD is weekly.

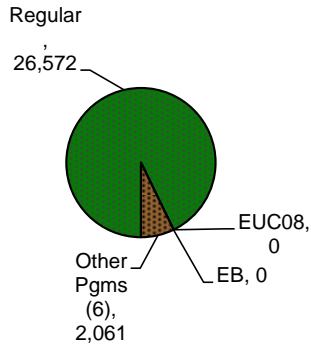
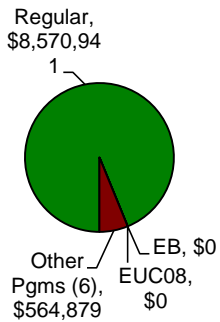
**EMERGENCY UNEMPLOYMENT COMPENSATION 08 (EUC08)**

	This Week	Last Week	Cumulative
Initial Claims (Excl. Liable)	0	0	11
Weeks Claimed (Excl. Liable)	0	0	30
Gross Amount of Payments (\$)	\$0	\$0	\$27,263
Number Exhausting Tier 1 Benefits	0	0	4
Number Exhausting Tier 2 Benefits	0	0	0
Number Exhausting Tier Z Benefits (14th week of Tier 2)	0	0	0
Number Exhausting Tier 3 Benefits	0	0	0
Number Exhausting Tier 4 Benefits	0	0	0

EUC began 07/06/2008

**Benefits Paid - By Program**  
**Total: \$9,135,820**

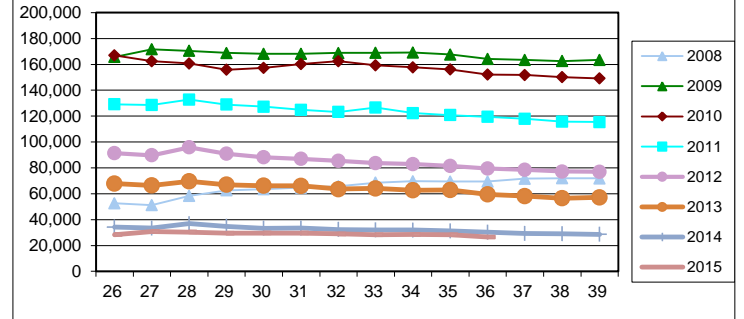
**Weeks Claimed - By Program**  
**Total: 28,633**



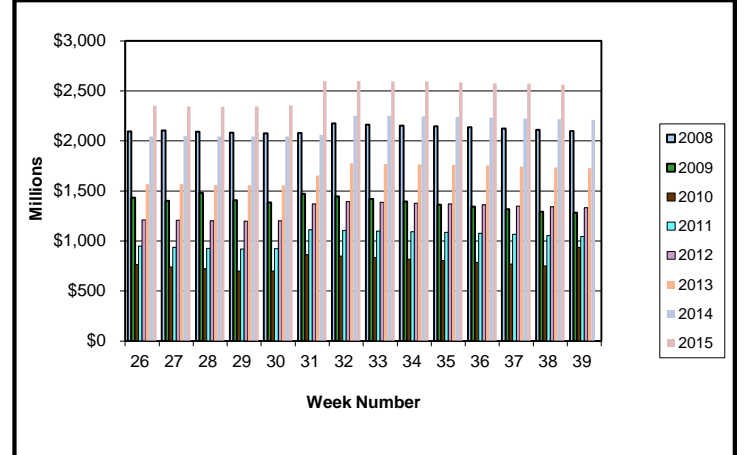
<sup>6</sup> Other Programs Include AB, TRA, TAA, WS, TUI, SUD, SEA  
 For current and historic UI reports, visit:

<http://www.oregon.gov/EMPLOY/Agency/Pages/UI-Reports.aspx>

**Total Weeks Claimed (Reg + EB + EUC + OEB+ Other Pgm: 28,633)**



**Trust Fund Balance: \$2,742.38 (in millions)**



**Total Benefits Paid: \$9,135,820 (During Week)**

