

UNEMPLOYMENT INSURANCE WEEKLY STATISTICS

State of Oregon
EMPLOYMENT DEPARTMENT
 UI Operations and Program Support

 (503) 947-1360
 Stepheni.K.Hutton@oregon.gov
 www.oregon.gov

LABOR FORCE DATA		Last Month	Prior Month	Last Year
		August 2015	July 2015	August 2014
Oregon Civilian Labor Force		1,961,353	1,957,689	1,968,689
Total Number Unemployed		116,156	122,998	135,770

UNEMPLOYMENT RATES (CIVILIAN) (%)		Labor Force & Rate Data: www.QualityInfo.org		
Total Unemployment:	Oregon	5.90%	6.30%	6.90%
	National	5.20%	5.60%	6.30%
Seasonally Adjusted:	Oregon	6.10%	5.90%	6.90%
	National	5.10%	5.30%	6.10%

Week # :	37	THIS WEEK		LAST WEEK		Last Month	Prior Month	Last Year
Ending:	September 19, 2015	2015	2014	2015	2014	August 2015	July 2015	August 2014
UNEMPLOYMENT RATES (%)								
Insured Unemployment: Oregon		1.58	1.88	1.60	1.94	1.64	2.11	1.86
EB Trigger ¹		1.73	2.08	1.75	2.10			
Adjusted Insured Unemployment		2.22	2.69	2.24	2.71			
National Average TUR ²		5.60	6.90	5.60	6.90			
REGULAR CLAIMS (UI, UCFE, UCX)								
Initial Claims (Excl. Liable) ³		4,821	5,238	3,845	3,597	17,589	23,481	17,151
Oregon - New		3,003	3,218	2,134	1,577	9,349	12,407	9,967
Additional		1,818	2,020	1,711	2,020	7,444	10,039	7,184
Interstate - Agent		0	0	0	0	796	1,035	0
Interstate - Liable		200	211	146	155	573	810	800
Weeks Claimed (Excl. Liable) ³		25,910	29,353	26,572	30,287	125,161	160,752	137,668
Oregon		25,910	29,353	26,572	30,287	117,490	151,361	129,543
Interstate - Agent		0	0	0	0	7,671	9,391	8,125
Interstate - Liable		1,300	1,706	1,247	1,690	5,383	7,000	6,850
New Combined Wage Claims		109	121	67	81	361	433	396
Non-monetary Determinations & Redeter.		2,022	2,148	1,404	1,561	7,780	8,426	7,762
PAYMENTS: REGULAR BENEFITS								
First Payments		1,661	1,639	1,390	1,491	7,867	7,963	6,606
Payments Issued		25,335	29,118	25,627	29,765	28,397	28,898	126,247
Gross Amount of Payments (\$) ³		\$8,692,161	9,232,428	\$8,570,941	9,261,725	\$9,270,533	\$9,428,736	38,783,160
Average Check Amount (\$) ³		\$343	317	\$334	311	\$326	\$326	307
Number Exhausting Benefits		522	778	599	676	2,907	2,578	2,711
TRUST FUND								
Balance (in Millions) (\$)		\$2,735.6	\$2,221.7	\$2,742.38	\$2,233.52	\$2,756.06	\$2,583.18	\$2,240.08

¹ EB Trigger Graph:

<http://www.oregon.gov/EMPLOY/Agency/Documents/Current%20Unemployment%20Insurance%20Reports/IUR.pdf>

² NTUR: Unemployment Compensation Amendment Of 1992 specifies that a 2 month average NTUR be used to determine duration levels.

³ Excludes WORKSHARE program

For current and historic UI reports, visit:

<http://www.oregon.gov/EMPLOY/Agency/Pages/UI-Reports.aspx>

Week # :	37
Ending:	September 19, 2015

	This Week	Last Week	Cumulative YTD
EXTENDED BENEFITS (EB)			
Initial Claims (Excl. Liable)	0	0	3
Weeks Claimed (Excl. Liable)	0	0	0
Gross Amount of Payments (\$)	\$0	\$0	\$0
Number Exhausting Benefits	0	0	0

Oregon HEB Trigger "OFF" 04/07/2012.

http://www.workforcesecurity.doleta.gov/unemploy/claims_arch.asp

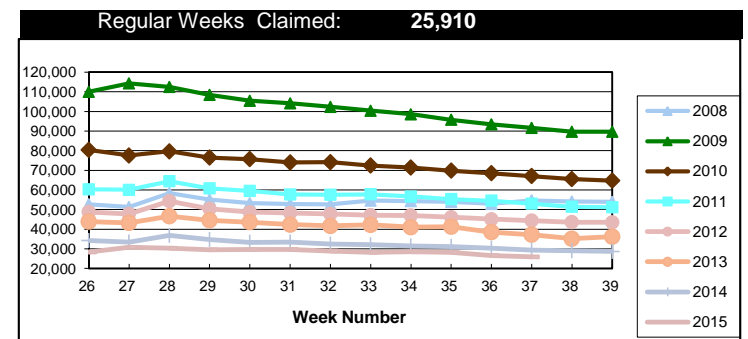
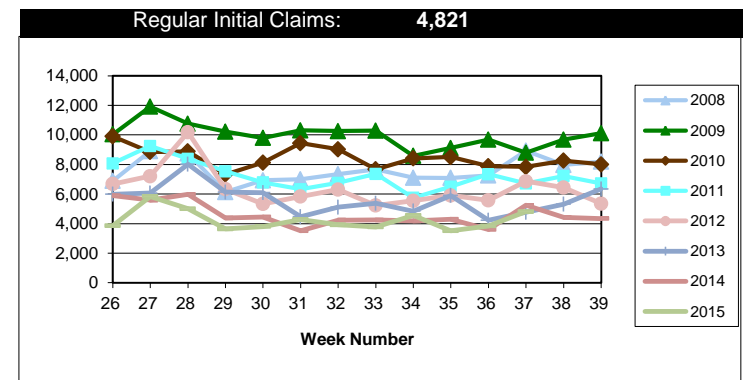
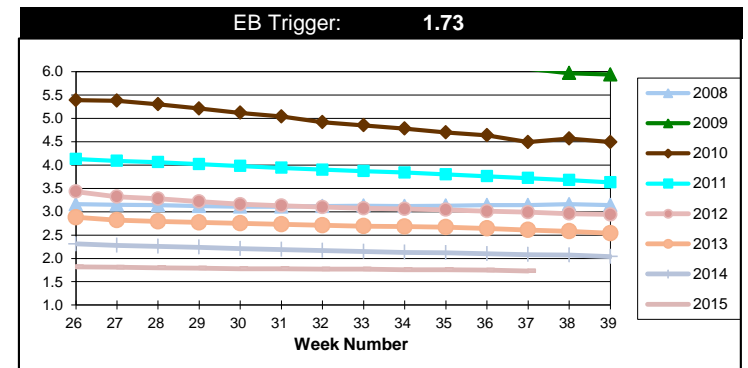
Misc Additional Benefits (AB)			
Initial Claims (Excl. Liable)	1	0	4
Weeks Claimed (Excl. Liable)	4	3	172
Gross Amount of Payments (\$)	0	0	\$0
Number Exhausting Benefits	0	0	0

TRADE ADJUSTMENT ACT (TRA)			
Training Plans	9	2	102
Initial Claims	9	3	330
Weeks Claimed	225	213	12,779
Gross Amount of TRA Payments (\$)	\$101,282	\$96,236	\$5,773,907
Certifications	0	0	3
Gross Amount of A/RTAA Payments (\$)	33,806	38,538	\$3,235,456

WORKSHARE PROGRAM (WS)			
Initial Claims	48	22	2,005
Weeks Claimed	643	527	13,022
Gross Amount of Payments (\$)	\$63,518	\$46,009	\$1,187,030
# of Workshare Plans	158	158	5,447

TRAINING UI (TUI)			
Applications Accepted	58	56	1,914
Approved	57	53	1,673
Weeks Claimed	641	651	22,487
Gross Amount of Payments (\$)	\$110,408	\$108,566	\$6,314,334

SUPPLEMENTAL UI for DISLOCATED WORKERS (SUD)			
Initial Claims	20	8	935
Weeks Claimed	331	345	18,118
Gross Amount of Payments (\$)	\$128,767	\$132,713	\$6,506,136



For current and historic UI reports, visit:



<http://www.oregon.gov/EMPLOY/Agency/Pages/UI-Reports.as>



(503) 947-1360



Week # :	37
Ending:	September 19, 2015

SELF EMPLOYMENT (SEA) MONTHLY

		August 2015	Cumulative
Referred		69	672
Enrolled		69	672
Completed		79	511
Weeks Claimed	321	1,408	12,380
Gross Amount of Payments (\$)	151,076	\$635,399	\$5,523,162

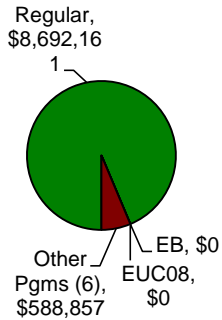
These are MONTHLY counts; data in BOLD is weekly.

EMERGENCY UNEMPLOYMENT COMPENSATION 08 (EUC08)

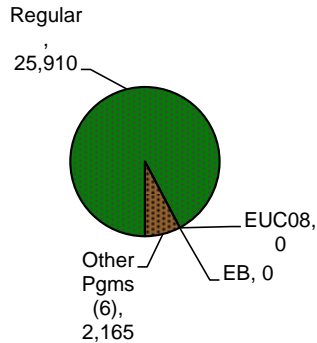
	This Week	Last Week	Cumulative
Initial Claims (Excl. Liable)	0	0	11
Weeks Claimed (Excl. Liable)	0	0	30
Gross Amount of Payments (\$)	\$0	\$0	\$27,263
Number Exhausting Tier 1 Benefits	0	0	4
Number Exhausting Tier 2 Benefits	0	0	0
Number Exhausting Tier Z Benefits (14th week of Tier 2)	0	0	0
Number Exhausting Tier 3 Benefits	0	0	0
Number Exhausting Tier 4 Benefits	0	0	0

EUC began 07/06/2008

Benefits Paid - By Program
Total: \$9,281,018



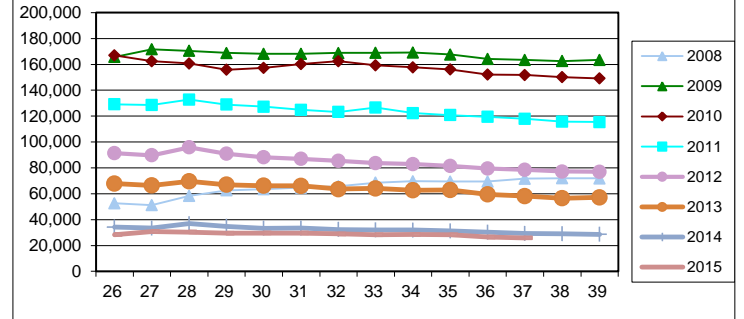
Weeks Claimed - By Program
Total: 28,075



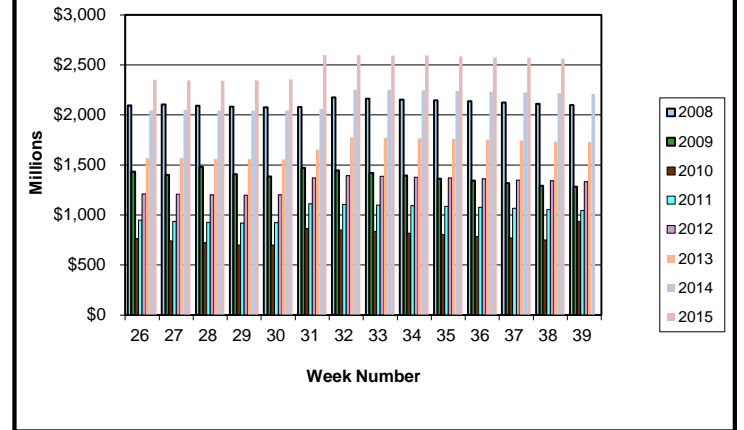
⁶ Other Programs Include AB, TRA, TAA, WS, TUI, SUD, SEA
 For current and historic UI reports, visit:

<http://www.oregon.gov/EMPLOY/Agency/Pages/UI-Reports.aspx>

Total Weeks Claimed (Reg + EB + EUC + OEB+ Other Pgm: 28,075)



Trust Fund Balance: \$2,735.6 (in millions)



Total Benefits Paid: \$9,281,018 (During Week)

