

UNEMPLOYMENT INSURANCE WEEKLY STATISTICS

State of Oregon
EMPLOYMENT DEPARTMENT
 UI Operations and Program Support

 (503) 947-1360
 Stepheni.K.Hutton@oregon.gov
 www.oregon.gov

LABOR FORCE DATA		Last Month	Prior Month	Last Year
		August 2015	July 2015	August 2014
Oregon Civilian Labor Force		1,961,353	1,957,689	1,968,689
Total Number Unemployed		116,156	122,998	135,770

UNEMPLOYMENT RATES (CIVILIAN) (%)		Labor Force & Rate Data: www.QualityInfo.org		
Total Unemployment:	Oregon	5.90%	6.30%	6.90%
	National	5.20%	5.60%	6.30%
Seasonally Adjusted:	Oregon	6.10%	5.90%	6.90%
	National	5.10%	5.30%	6.10%

Week # :	39	THIS WEEK		LAST WEEK		Last Month	Prior Month	Last Year
Ending:	October 3, 2015	2015	2014	2015	2014	August 2015	July 2015	August 2014
UNEMPLOYMENT RATES (%)								
Insured Unemployment: Oregon		1.55	1.84	1.56	1.86	1.64	2.11	1.86
EB Trigger ¹		1.68	2.04	1.72	2.07			
Adjusted Insured Unemployment		2.12	2.64	2.21	2.67			
National Average TUR ²		5.60	6.90	5.60	6.90			
REGULAR CLAIMS (UI, UCFE, UCX)								
Initial Claims (Excl. Liable) ³		3,722	4,346	3,874	4,417	17,589	23,481	17,151
Oregon - New		2,038	2,443	2,226	2,558	9,349	12,407	9,967
Additional		1,684	1,903	1,648	1,859	7,444	10,039	7,184
Interstate - Agent		0	0	0	0	796	1,035	0
Interstate - Liable		155	164	166	197	573	810	800
Weeks Claimed (Excl. Liable) ³		25,455	28,633	25,675	28,992	125,161	160,752	137,668
Oregon		25,455	28,633	25,675	28,992	117,490	151,361	129,543
Interstate - Agent		0	0	0	0	7,671	9,391	8,125
Interstate - Liable		1,308	1,680	1,292	1,710	5,383	7,000	6,850
New Combined Wage Claims		84	91	101	119	361	433	396
Non-monetary Determinations & Redeter.		1,730	1,727	1,934	1,836	7,780	8,426	7,762
PAYMENTS: REGULAR BENEFITS								
First Payments		1,482	1,654	1,596	1,772	7,867	7,963	6,606
Payments Issued		25,266	27,935	25,241	28,353	28,397	28,898	126,247
Gross Amount of Payments (\$) ³		\$8,632,440	8,954,212	\$8,614,760	9,018,540	\$9,270,533	\$9,428,736	38,783,160
Average Check Amount (\$) ³		\$342	321	\$341	318	\$326	\$326	307
Number Exhausting Benefits		458	672	527	678	2,907	2,578	2,711
TRUST FUND								
Balance (in Millions) (\$)		\$2,736.93	\$2,210.31	\$2,728.77	\$2,215.92	\$2,756.06	\$2,583.18	\$2,240.08

¹ EB Trigger Graph: <http://www.oregon.gov/EMPLOY/Agency/Documents/Current%20Unemployment%20Insurance%20Reports/IUR.pdf>
² NTUR: Unemployment Compensation Amendment Of 1992 specifies that a 2 month average NTUR be used to determine duration levels. ³ Excludes WORKSHARE program

For current and historic UI reports, visit: <http://www.oregon.gov/EMPLOY/Agency/Pages/UI-Reports.aspx>

Week # :	39
Ending:	October 3, 2015

	This Week	Last Week	Cumulative YTD
EXTENDED BENEFITS (EB)			
Initial Claims (Excl. Liable)	0	0	3
Weeks Claimed (Excl. Liable)	0	0	0
Gross Amount of Payments (\$)	\$0	\$0	\$0
Number Exhausting Benefits	0	0	0

Oregon HEB Trigger "OFF" 04/07/2012.

http://www.workforcesecurity.doleta.gov/unemploy/claims_arch.asp

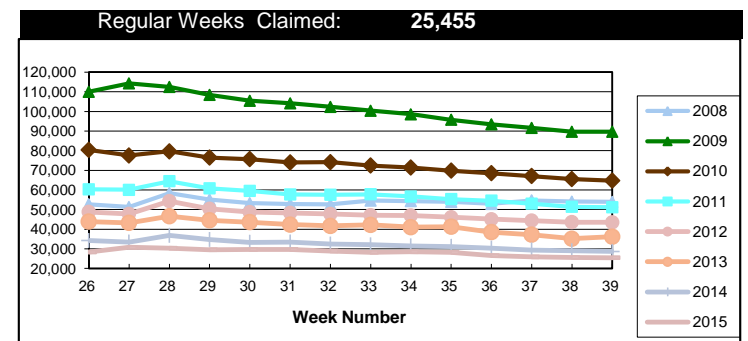
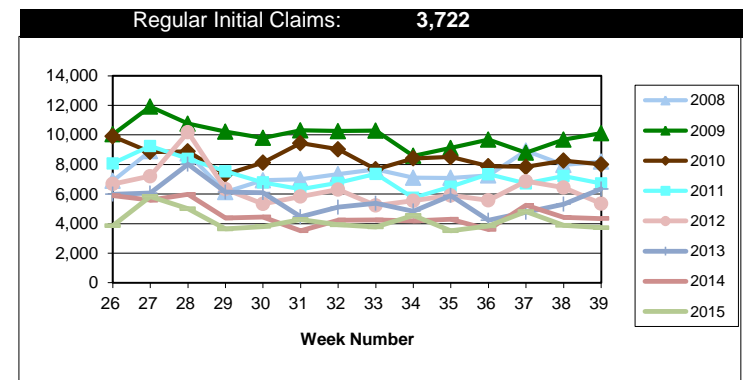
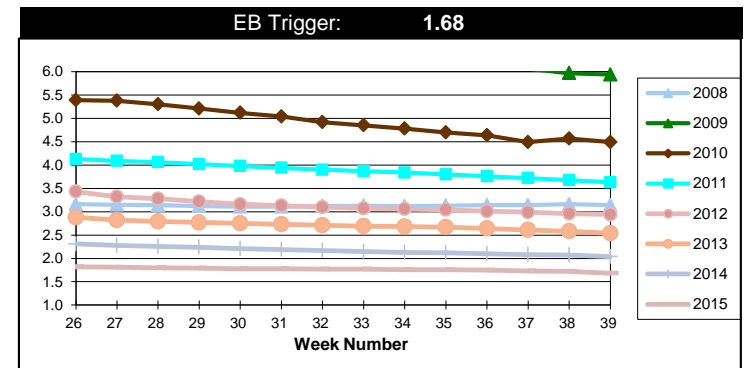
Misc Additional Benefits (AB)			
Initial Claims (Excl. Liable)	0	0	4
Weeks Claimed (Excl. Liable)	5	5	182
Gross Amount of Payments (\$)	0	0	\$0
Number Exhausting Benefits	0	0	0

TRADE ADJUSTMENT ACT (TRA)			
Training Plans	10	16	128
Initial Claims	33	15	378
Weeks Claimed	249	222	13,250
Gross Amount of TRA Payments (\$)	\$108,962	\$100,461	\$5,983,330
Certifications	0	0	3
Gross Amount of A/RTAA Payments (\$)	60,841	56,562	\$3,352,859

WORKSHARE PROGRAM (WS)			
Initial Claims	20	41	2,066
Weeks Claimed	320	442	13,784
Gross Amount of Payments (\$)	\$38,186	\$48,701	\$1,273,917
# of Workshare Plans	154	156	5,757

TRAINING UI (TUI)			
Applications Accepted	82	97	2,093
Approved	62	88	1,823
Weeks Claimed	706	623	23,816
Gross Amount of Payments (\$)	\$132,526	\$111,213	\$6,558,073

SUPPLEMENTAL UI for DISLOCATED WORKERS (SUD)			
Initial Claims	48	20	1,003
Weeks Claimed	348	326	18,792
Gross Amount of Payments (\$)	\$138,375	\$127,924	\$6,772,435



For current and historic UI reports, visit:



<http://www.oregon.gov/EMPLOY/Agency/Pages/UI-Reports.as>



(503) 947-1360



Week # :	39
Ending:	October 3, 2015

SELF EMPLOYMENT (SEA) MONTHLY

		August 2015	Cumulative
Referred		69	672
Enrolled		69	672
Completed		79	511
Weeks Claimed	283	1,408	12,979
Gross Amount of Payments (\$)	134,981	\$635,399	\$5,798,365

These are MONTHLY counts; data in BOLD is weekly.

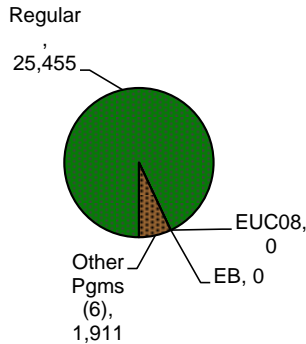
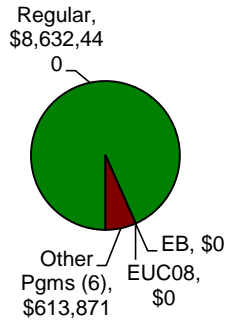
EMERGENCY UNEMPLOYMENT COMPENSATION 08 (EUC08)

	This Week	Last Week	Cumulative
Initial Claims (Excl. Liable)	0	0	11
Weeks Claimed (Excl. Liable)	0	0	30
Gross Amount of Payments (\$)	\$0	\$0	\$27,263
Number Exhausting Tier 1 Benefits	0	0	4
Number Exhausting Tier 2 Benefits	0	0	0
Number Exhausting Tier Z Benefits (14th week of Tier 2)	0	0	0
Number Exhausting Tier 3 Benefits	0	0	0
Number Exhausting Tier 4 Benefits	0	0	0

EUC began 07/06/2008

Benefits Paid - By Program
Total: \$9,246,311

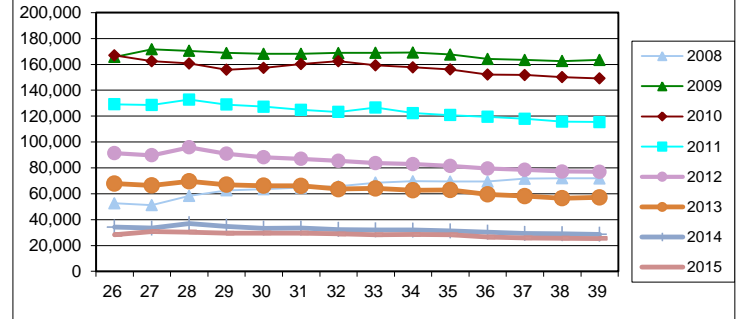
Weeks Claimed - By Program
Total: 27,366



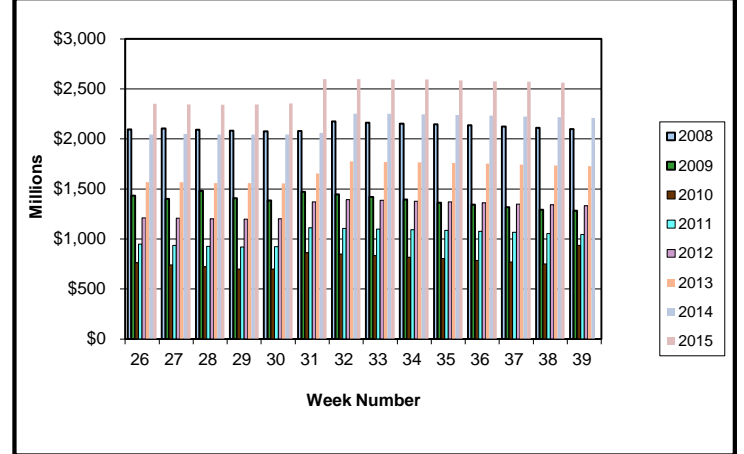
⁶ Other Programs Include AB, TRA, TAA, WS, TUI, SUD, SEA
 For current and historic UI reports, visit:

<http://www.oregon.gov/EMPLOY/Agency/Pages/UI-Reports.aspx>

Total Weeks Claimed (Reg + EB + EUC + OEB+ Other Pgm: 27,366)



Trust Fund Balance: \$2,736.93 (in millions)



Total Benefits Paid: \$9,246,311 (During Week)

