

UNEMPLOYMENT INSURANCE WEEKLY STATISTICS

State of Oregon
EMPLOYMENT DEPARTMENT

UI Operations and Program Support

(503) 947-1360

Stepheni.K.Hutton@oregon.gov

www.oregon.gov

LABOR FORCE DATA		Last Month	Prior Month	Last Year
		September 2015	August 2015	September 2014
Oregon Civilian Labor Force		1,966,331	1,960,868	1,957,455
Total Number Unemployed		110,776	116,234	122,778
UNEMPLOYMENT RATES (CIVILIAN) (%)		Labor Force & Rate Data: www.QualityInfo.org		
Total Unemployment:	Oregon	5.60%	5.90%	6.30%
	National	4.90%	5.20%	5.70%
Seasonally Adjusted:	Oregon	6.20%	6.10%	6.90%
	National	5.10%	5.10%	5.90%

Week # :	42	THIS WEEK		LAST WEEK		Last Month	Prior Month	Last Year
Ending:	October 24, 2015	2015	2014	2015	2014	September 2015	August 2015	September 2014
UNEMPLOYMENT RATES (%)								
Insured Unemployment: Oregon	1.63	1.84	1.60	1.84	1.94	1.64	1.78	
EB Trigger ¹	1.63	1.94	1.64	1.96				
Adjusted Insured Unemployment	2.08	2.53	2.09	2.55				
National Average TUR ²	6.10	6.90	5.60	6.90				
REGULAR CLAIMS (UI, UCFE, UCX)								
Initial Claims (Excl. Liable) ³	3,949	4,542	4,629	4,526	21,210	17,589	17,824	
Oregon - New	2,258	2,393	2,884	2,737	11,350	9,349	9,963	
Additional	1,691	2,149	1,745	1,789	8,725	7,444	7,861	
Interstate - Agent	0	0	0	0	1,135	796	0	
Interstate - Liable	190	192	218	228	808	573	727	
Weeks Claimed (Excl. Liable) ³	26,417	28,854	26,261	28,831	144,106	125,161	127,362	
Oregon	26,417	28,854	26,261	28,831	134,387	117,490	119,533	
Interstate - Agent	0	0	0	0	9,719	7,671	7,829	
Interstate - Liable	1,393	1,722	1,360	1,688	6,457	5,383	6,786	
New Combined Wage Claims	103	122	114	146	388	361	412	
Non-monetary Determinations & Redeter.	1,604	1,823	1,759	1,967	9,216	7,780	7,272	
PAYMENTS: REGULAR BENEFITS								
First Payments	1,907	2,002	1,397	1,635	6,664	7,867	6,556	
Payments Issued	25,551	28,524	25,017	28,005	129,866	28,397	115,171	
Gross Amount of Payments (\$) ³	\$8,679,686	9,041,117	\$8,561,108	8,922,369	\$43,780,835	\$9,270,533	36,466,905	
Average Check Amount (\$) ³	\$340	317	\$342	319	\$337	\$326	317	
Number Exhausting Benefits	517	644	575	696	2,196	2,907	2,804	
TRUST FUND								
Balance (in Millions) (\$)	\$2,731.4	\$2,207.71	\$2,729.8	\$2,210.48	\$2,722.6	\$2,756.06	\$2,204.1	

¹ EB Trigger Graph:

<http://www.oregon.gov/EMPLOY/Agency/Documents/Current%20Unemployment%20Insurance%20Reports/IUR.pdf>

² NTUR: Unemployment Compensation Amendment Of 1992 specifies that a 2 month average NTUR be used to determine duration levels.

³ Excludes WORKSHARE program

For current and historic UI reports, visit:

<http://www.oregon.gov/EMPLOY/Agency/Pages/UI-Reports.aspx>

Week # :	42
Ending:	October 24, 2015

	This Week	Last Week	Cumulative YTD
EXTENDED BENEFITS (EB)			
Initial Claims (Excl. Liable)	0	0	3
Weeks Claimed (Excl. Liable)	0	0	0
Gross Amount of Payments (\$)	\$0	\$0	\$0
Number Exhausting Benefits	0	0	0

Oregon HEB Trigger "OFF" 04/07/2012.

http://www.workforcesecurity.doleta.gov/unemploy/claims_arch.asp

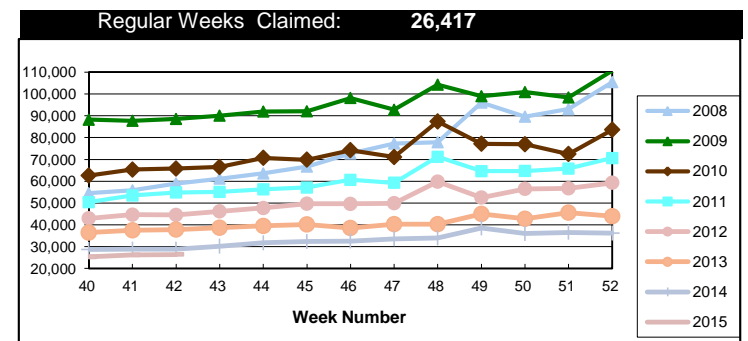
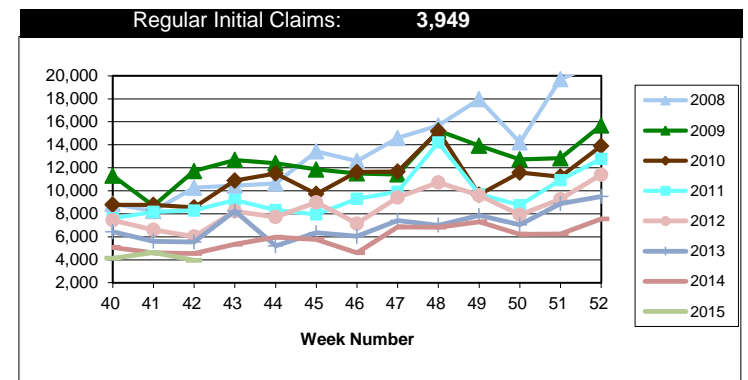
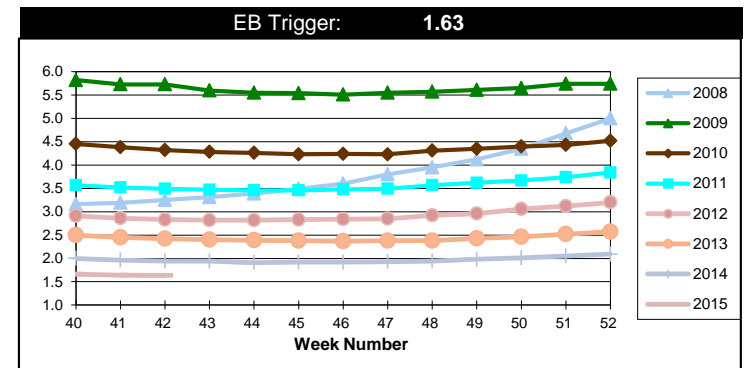
Misc Additional Benefits (AB)			
Initial Claims (Excl. Liable)	0	0	4
Weeks Claimed (Excl. Liable)	6	4	196
Gross Amount of Payments (\$)	0	0	\$0
Number Exhausting Benefits	0	0	0

TRADE ADJUSTMENT ACT (TRA)			
Training Plans	1	1	132
Initial Claims	5	4	391
Weeks Claimed	219	225	13,923
Gross Amount of TRA Payments (\$)	\$98,831	\$100,074	\$6,285,718
Certifications	0	0	3
Gross Amount of A/RTAA Payments (\$)	136,662	56,178	\$3,604,356

WORKSHARE PROGRAM (WS)			
Initial Claims	142	38	2,330
Weeks Claimed	345	407	14,963
Gross Amount of Payments (\$)	\$34,386	\$40,416	\$1,398,596
# of Workshare Plans	164	161	6,241

TRAINING UI (TUI)			
Applications Accepted	52	89	2,325
Approved	43	74	2,017
Weeks Claimed	906	874	26,454
Gross Amount of Payments (\$)	\$186,895	\$179,362	\$7,088,912

SUPPLEMENTAL UI for DISLOCATED WORKERS (SUD)			
Initial Claims	29	33	1,100
Weeks Claimed	398	383	19,951
Gross Amount of Payments (\$)	\$158,513	\$150,100	\$7,224,665



For current and historic UI reports, visit:



<http://www.oregon.gov/EMPLOY/Agency/Pages/UI-Reports.as>



(503) 947-1360



Week # :	42
Ending:	October 24, 2015

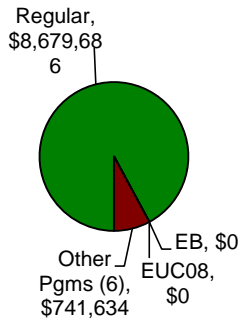
SELF EMPLOYMENT (SEA) MONTHLY		September 2015	Cumulative
Referred		36	748
Enrolled		36	747
Completed		62	613
Weeks Claimed	273	1,585	13,804
Gross Amount of Payments (\$)	126,347	\$720,178	\$6,169,944

These are MONTHLY counts; data in BOLD is weekly.

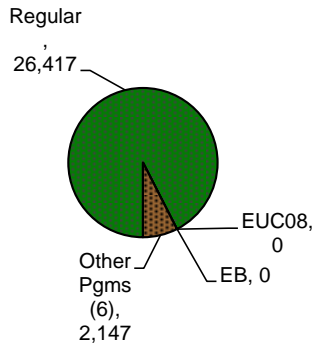
EMERGENCY UNEMPLOYMENT COMPENSATION 08 (EUC08)	This Week	Last Week	Cumulative
Initial Claims (Excl. Liable)	0	0	11
Weeks Claimed (Excl. Liable)	0	0	30
Gross Amount of Payments (\$)	\$0	\$106	\$27,369
Number Exhausting Tier 1 Benefits	0	0	4
Number Exhausting Tier 2 Benefits	0	0	0
Number Exhausting Tier Z Benefits (14th week of Tier 2)	0	0	0
Number Exhausting Tier 3 Benefits	0	0	0
Number Exhausting Tier 4 Benefits	0	0	0

EUC began 07/06/2008

Benefits Paid - By Program
Total: **\$9,421,320**



Weeks Claimed - By Program
Total: **28,564**



Other Programs Include AB, TRA, TAA, WS, TUI, SUD, SEA
For current and historic UI reports, visit:

<http://www.oregon.gov/EMPLOY/Agency/Pages/UI-Reports.aspx>

