

UNEMPLOYMENT INSURANCE WEEKLY STATISTICS

State of Oregon
EMPLOYMENT DEPARTMENT
 UI Operations and Program Support

 (503) 947-1360
 Stephni.K.Hutton@oregon.gov
 www.oregon.gov

LABOR FORCE DATA		Last Month	Prior Month	Last Year
		September 2015	August 2015	September 2014
Oregon Civilian Labor Force		1,966,331	1,960,868	1,957,455
Total Number Unemployed		110,776	116,234	122,778
UNEMPLOYMENT RATES (CIVILIAN) (%)		Labor Force & Rate Data: www.QualityInfo.org		
Total Unemployment:	Oregon	5.60%	5.90%	6.30%
	National	4.90%	5.20%	5.70%
Seasonally Adjusted:	Oregon	6.20%	6.10%	6.90%
	National	5.10%	5.10%	5.90%

Week # :	43		THIS WEEK		LAST WEEK		Last Month	Prior Month	Last Year
	Ending:	October 31, 2015	2015	2014	2015	2014	September 2015	August 2015	September 2014
UNEMPLOYMENT RATES (%)									
Insured Unemployment: Oregon	1.68	1.92	1.63	1.84	1.94	1.64	1.78		
EB Trigger ¹	1.62	1.92	1.63	1.94					
Adjusted Insured Unemployment	2.07	2.51	2.08	2.53					
National Average TUR ²	6.10	7.00	6.10	6.90					
REGULAR CLAIMS (UI, UCFE, UCX)									
Initial Claims (Excl. Liable) ³	4,169	5,351	3,949	4,542	21,210	17,589	17,824		
Oregon - New	2,293	2,786	2,258	2,393	11,350	9,349	9,963		
Additional	1,876	2,565	1,691	2,149	8,725	7,444	7,861		
Interstate - Agent	0	0	0	0	1,135	796	0		
Interstate - Liable	184	228	190	192	808	573	727		
Weeks Claimed (Excl. Liable) ³	26,881	30,213	26,417	28,854	144,106	125,161	127,362		
Oregon	26,881	30,213	26,417	28,854	134,387	117,490	119,533		
Interstate - Agent	0	0	0	0	9,719	7,671	7,829		
Interstate - Liable	1,449	1,757	1,393	1,722	6,457	5,383	6,786		
New Combined Wage Claims	117	137	103	122	388	361	412		
Non-monetary Determinations & Redeter.	1,813	1,708	1,604	1,823	9,216	7,780	7,272		
PAYMENTS: REGULAR BENEFITS									
First Payments	1,719	1,938	1,907	2,002	6,664	7,867	6,556		
Payments Issued	26,454	29,325	25,551	28,524	129,866	28,397	115,171		
Gross Amount of Payments (\$) ³	\$8,852,554	9,317,691	\$8,679,686	9,041,117	\$43,780,835	\$9,270,533	36,466,905		
Average Check Amount (\$) ³	\$335	318	\$340	317	\$337	\$326	317		
Number Exhausting Benefits	551	659	517	644	2,196	2,907	2,804		
TRUST FUND									
Balance (in Millions) (\$)	\$2,739.66	\$2,210.58	\$2,731.4	\$2,207.71	\$2,722.6	\$2,756.06	\$2,204.1		

¹ EB Trigger Graph: <http://www.oregon.gov/EMPLOY/Agency/Documents/Current%20Unemployment%20Insurance%20Reports/IUR.pdf>
² NTUR: Unemployment Compensation Amendment Of 1992 specifies that a 2 month average NTUR be used to determine duration levels. ³ Excludes WORKSHARE program

For current and historic UI reports, visit: <http://www.oregon.gov/EMPLOY/Agency/Pages/UI-Reports.aspx>

Week # :	43
Ending:	October 31, 2015

	This Week	Last Week	Cumulative YTD
EXTENDED BENEFITS (EB)			
Initial Claims (Excl. Liable)	0	0	3
Weeks Claimed (Excl. Liable)	0	0	0
Gross Amount of Payments (\$)	\$0	\$0	\$0
Number Exhausting Benefits	0	0	0

Oregon HEB Trigger "OFF" 04/07/2012.

http://www.workforcesecurity.doleta.gov/unemploy/claims_arch.asp

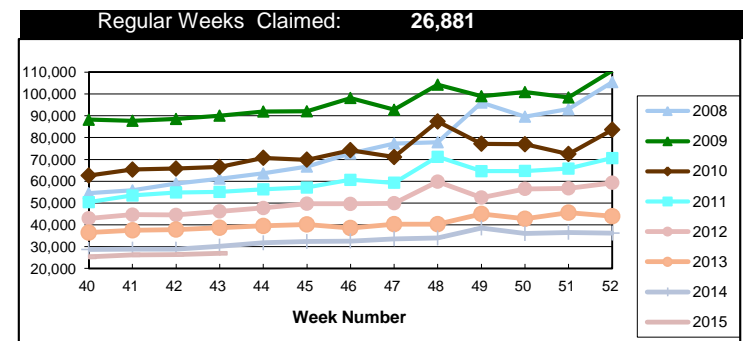
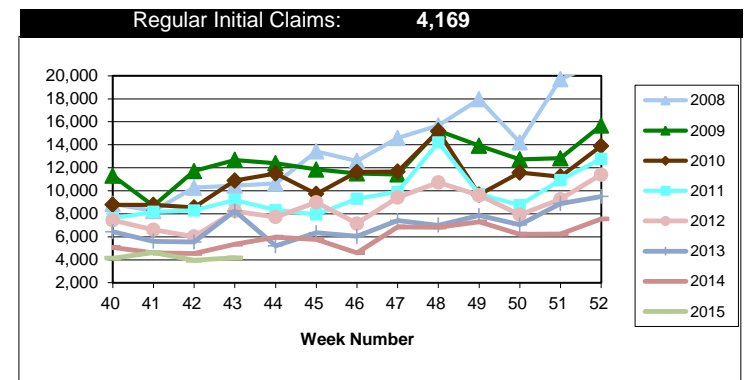
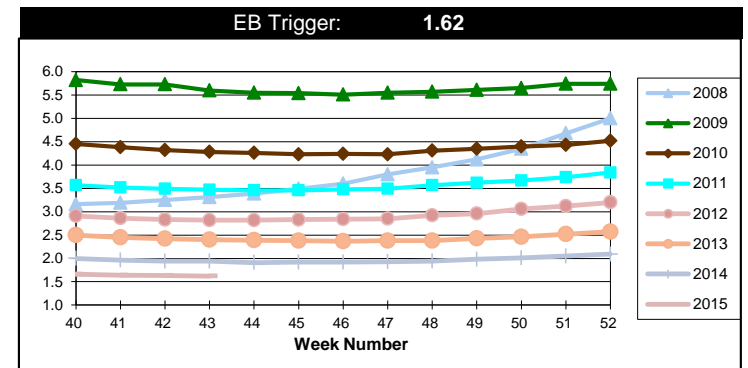
Misc Additional Benefits (AB)			
Initial Claims (Excl. Liable)	0	0	4
Weeks Claimed (Excl. Liable)	3	6	199
Gross Amount of Payments (\$)	0	0	\$0
Number Exhausting Benefits	0	0	0

TRADE ADJUSTMENT ACT (TRA)			
Training Plans	1	1	133
Initial Claims	3	5	394
Weeks Claimed	219	219	14,142
Gross Amount of TRA Payments (\$)	\$98,017	\$98,831	\$6,383,735
Certifications	0	0	3
Gross Amount of A/RTAA Payments (\$)	48,594	136,662	\$3,652,950

WORKSHARE PROGRAM (WS)			
Initial Claims	130	142	2,460
Weeks Claimed	462	345	15,425
Gross Amount of Payments (\$)	\$38,574	\$34,386	\$1,437,170
# of Workshare Plans	165	164	6,406

TRAINING UI (TUI)			
Applications Accepted	60	52	2,385
Approved	47	43	2,064
Weeks Claimed	914	906	27,368
Gross Amount of Payments (\$)	\$183,180	\$186,895	\$7,272,092

SUPPLEMENTAL UI for DISLOCATED WORKERS (SUD)			
Initial Claims	21	29	1,121
Weeks Claimed	423	398	20,374
Gross Amount of Payments (\$)	\$151,499	\$158,513	\$7,376,164



For current and historic UI reports, visit:



<http://www.oregon.gov/EMPLOY/Agency/Pages/UI-Reports.as>



(503) 947-1360



Week # :	43
Ending:	October 31, 2015

SELF EMPLOYMENT (SEA) MONTHLY		September 2015	Cumulative
Referred		36	748
Enrolled		36	747
Completed		62	613
Weeks Claimed	272	1,585	14,076
Gross Amount of Payments (\$)	121,238	\$720,178	\$6,291,182

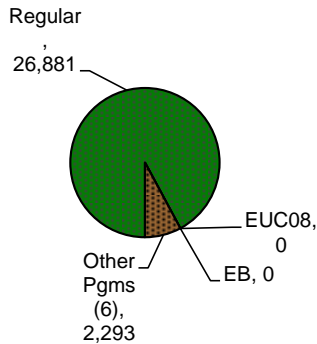
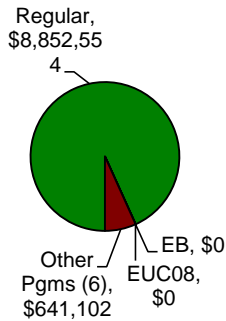
These are MONTHLY counts; data in BOLD is weekly.

EMERGENCY UNEMPLOYMENT COMPENSATION 08 (EUC08)	This Week	Last Week	Cumulative
Initial Claims (Excl. Liable)	0	0	11
Weeks Claimed (Excl. Liable)	0	0	30
Gross Amount of Payments (\$)	\$0	\$0	\$27,369
Number Exhausting Tier 1 Benefits	0	0	4
Number Exhausting Tier 2 Benefits	0	0	0
Number Exhausting Tier Z Benefits (14th week of Tier 2)	0	0	0
Number Exhausting Tier 3 Benefits	0	0	0
Number Exhausting Tier 4 Benefits	0	0	0

EUC began 07/06/2008

Benefits Paid - By Program
Total: \$9,493,656

Weeks Claimed - By Program
Total: 29,174



Other Programs Include AB, TRA, TAA, WS, TUI, SUD, SEA
 For current and historic UI reports, visit:

<http://www.oregon.gov/EMPLOY/Agency/Pages/UI-Reports.aspx>

