

UNEMPLOYMENT INSURANCE WEEKLY STATISTICS

State of Oregon
EMPLOYMENT DEPARTMENT
 UI Operations and Program Support

☎ (503) 947-1360
 ✉ Stephni.K.Hutton@oregon.gov
 🌐 www.oregon.gov

LABOR FORCE DATA		Last Month	Prior Month	Last Year
		October 2015	September 2015	October 2014
Oregon Civilian Labor Force		1,981,638	1,968,134	1,967,556
Total Number Unemployed		106,111	111,016	126,283
UNEMPLOYMENT RATES (CIVILIAN) (%)		Labor Force & Rate Data: www.QualityInfo.org		
Total Unemployment:	Oregon	5.40%	5.60%	6.40%
	National	4.80%	4.90%	5.50%
Seasonally Adjusted:	Oregon	6.00%	6.20%	6.80%
	National	5.00%	5.10%	5.70%

Week # :	44		THIS WEEK		LAST WEEK		Last Month	Prior Month	Last Year
	Ending:	November 7, 2015	2015	2014	2015	2014	October 2015	September 2015	October 2014
UNEMPLOYMENT RATES (%)									
Insured Unemployment: Oregon		1.72	2.02	1.68	1.92	1.50	1.94	2.18	
EB Trigger ¹		1.62	1.91	1.62	1.92				
Adjusted Insured Unemployment		2.05	2.50	2.07	2.51				
National Average TUR ²		6.10	7.00	6.10	7.00				
REGULAR CLAIMS (UI, UCFE, UCX)									
Initial Claims (Excl. Liable) ³		4,638	5,969	4,169	5,351	18,331	21,210	25,895	
Oregon - New		2,473	3,387	2,293	2,786	10,117	11,350	14,550	
Additional		2,165	2,582	1,876	2,565	7,116	8,725	11,345	
Interstate - Agent		0	0	0	0	1,098	1,135	0	
Interstate - Liable		209	347	184	228	819	808	1,176	
Weeks Claimed (Excl. Liable) ³		27,656	31,764	26,881	30,213	115,422	144,106	161,558	
Oregon		27,656	31,764	26,881	30,213	107,333	134,387	151,438	
Interstate - Agent		0	0	0	0	8,089	9,719	10,120	
Interstate - Liable		1,455	1,837	1,449	1,757	5,539	6,457	8,644	
New Combined Wage Claims		95	114	117	137	472	388	644	
Non-monetary Determinations & Redeter.		1,733	1,743	1,813	1,708	6,864	9,216	9,040	
PAYMENTS: REGULAR BENEFITS									
First Payments		1,792	2,076	1,719	1,938	6,631	6,664	9,262	
Payments Issued		27,206	30,801	26,454	29,325	101,907	129,866	144,757	
Gross Amount of Payments (\$) ³		\$9,147,563	9,799,164	\$8,852,554	9,317,691	\$34,616,281	\$43,780,835	46,078,138	
Average Check Amount (\$) ³		\$336	318	\$335	318	\$340	\$337	318	
Number Exhausting Benefits		525	616	551	659	2,299	2,196	3,240	
TRUST FUND									
Balance (in Millions) (\$)		\$2,878.04	\$2,208.85	\$2,739.66	\$2,210.58	\$2,739.66	\$2,722.6	\$2,208.85	

¹ EB Trigger Graph:

<http://www.oregon.gov/EMPLOY/Agency/Documents/Current%20Unemployment%20Insurance%20Reports/IUR.pdf>

² NTUR: Unemployment Compensation Amendment Of 1992 specifies that a 2 month average NTUR be used to determine duration levels.

³ Excludes WORKSHARE program

For current and historic UI reports, visit:

<http://www.oregon.gov/EMPLOY/Agency/Pages/UI-Reports.aspx>

Week # :	44
Ending:	November 7, 2015

	This Week	Last Week	Cumulative YTD
EXTENDED BENEFITS (EB)			
Initial Claims (Excl. Liable)	0	0	3
Weeks Claimed (Excl. Liable)	0	0	0
Gross Amount of Payments (\$)	\$0	\$0	\$0
Number Exhausting Benefits	0	0	0

Oregon HEB Trigger "OFF" 04/07/2012.

http://www.workforcesecurity.doleta.gov/unemploy/claims_arch.asp

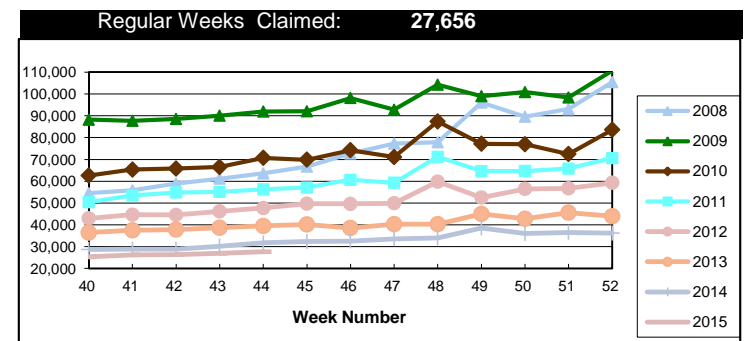
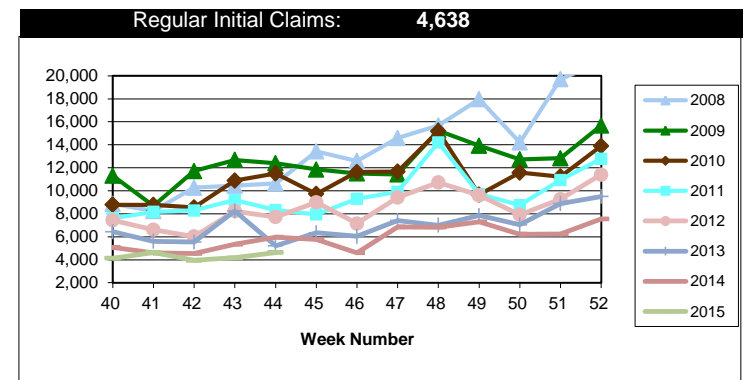
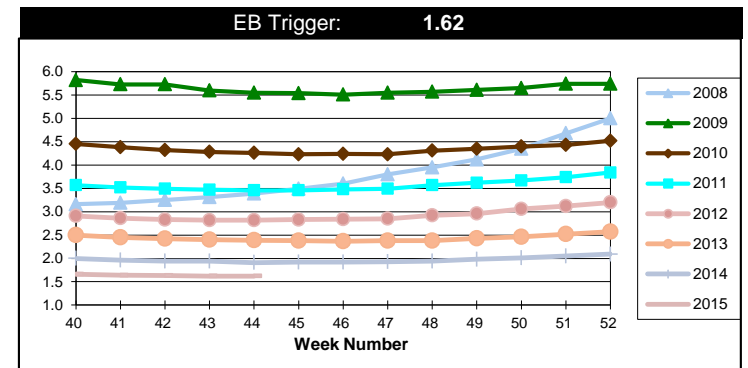
Misc Additional Benefits (AB)			
Initial Claims (Excl. Liable)	0	0	4
Weeks Claimed (Excl. Liable)	3	3	202
Gross Amount of Payments (\$)	0	0	\$0
Number Exhausting Benefits	0	0	0

TRADE ADJUSTMENT ACT (TRA)			
Training Plans	0	1	133
Initial Claims	23	3	417
Weeks Claimed	223	219	14,365
Gross Amount of TRA Payments (\$)	\$100,888	\$98,017	\$6,484,623
Certifications	0	0	3
Gross Amount of A/RTAA Payments (\$)	99,486	48,594	\$3,752,436

WORKSHARE PROGRAM (WS)			
Initial Claims	112	130	2,572
Weeks Claimed	383	462	15,808
Gross Amount of Payments (\$)	\$35,922	\$38,574	\$1,473,092
# of Workshare Plans	163	165	6,569

TRAINING UI (TUI)			
Applications Accepted	45	60	2,430
Approved	37	47	2,101
Weeks Claimed	910	914	28,278
Gross Amount of Payments (\$)	\$189,815	\$183,180	\$7,461,907

SUPPLEMENTAL UI for DISLOCATED WORKERS (SUD)			
Initial Claims	20	21	1,141
Weeks Claimed	396	423	20,770
Gross Amount of Payments (\$)	\$156,223	\$151,499	\$7,532,387



For current and historic UI reports, visit:



<http://www.oregon.gov/EMPLOY/Agency/Pages/UI-Reports.as>



(503) 947-1360



Week # :	44
Ending:	November 7, 2015

SELF EMPLOYMENT (SEA) MONTHLY		October 2015	Cumulative
Referred		56	748
Enrolled		56	747
Completed		53	613
Weeks Claimed	274	1,097	14,350
Gross Amount of Payments (\$)	125,043	\$492,817	\$6,416,225

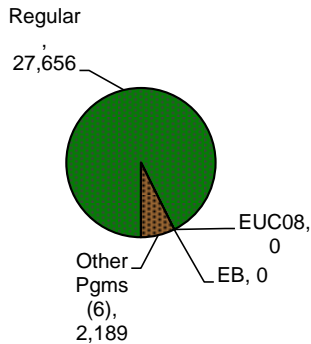
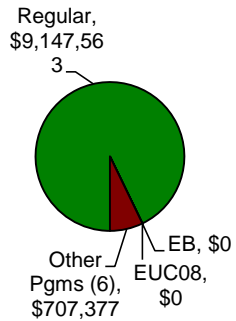
These are MONTHLY counts; data in BOLD is weekly.

EMERGENCY UNEMPLOYMENT COMPENSATION 08 (EUC08)	This Week	Last Week	Cumulative
Initial Claims (Excl. Liable)	0	0	11
Weeks Claimed (Excl. Liable)	0	0	30
Gross Amount of Payments (\$)	\$0	\$0	\$27,369
Number Exhausting Tier 1 Benefits	0	0	4
Number Exhausting Tier 2 Benefits	0	0	0
Number Exhausting Tier Z Benefits (14th week of Tier 2)	0	0	0
Number Exhausting Tier 3 Benefits	0	0	0
Number Exhausting Tier 4 Benefits	0	0	0

EUC began 07/06/2008

Benefits Paid - By Program
Total: \$9,854,940

Weeks Claimed - By Program
Total: 29,845



Other Programs Include AB, TRA, TAA, WS, TUI, SUD, SEA
 For current and historic UI reports, visit:

<http://www.oregon.gov/EMPLOY/Agency/Pages/UI-Reports.aspx>

