

UNEMPLOYMENT INSURANCE WEEKLY STATISTICS

State of Oregon
EMPLOYMENT DEPARTMENT
 UI Operations and Program Support

 (503) 947-1360
 Stepheni.K.Hutton@oregon.gov
 www.oregon.gov

LABOR FORCE DATA		Last Month	Prior Month	Last Year
		October 2015	September 2015	October 2014
Oregon Civilian Labor Force		1,981,638	1,968,134	1,967,556
Total Number Unemployed		106,111	111,016	126,283

UNEMPLOYMENT RATES (CIVILIAN) (%)		Labor Force & Rate Data: www.QualityInfo.org		
		October 2015	September 2015	October 2014
Total Unemployment:	Oregon	5.40%	5.60%	6.40%
	National	4.80%	4.90%	5.50%
Seasonally Adjusted:	Oregon	6.00%	6.20%	6.80%
	National	5.00%	5.10%	5.70%

Week # :	45		THIS WEEK		LAST WEEK		Last Month	Prior Month	Last Year
	Ending:	November 14, 2015	2015	2014	2015	2014	October 2015	September 2015	October 2014
UNEMPLOYMENT RATES (%)									
Insured Unemployment: Oregon		1.82	2.06	1.72	2.02	1.50	1.94	2.18	
EB Trigger ¹		1.63	1.92	1.62	1.91				
Adjusted Insured Unemployment		2.06	2.45	2.05	2.50				
National Average TUR ²		6.10	7.00	6.10	7.00				
REGULAR CLAIMS (UI, UCFE, UCX)									
Initial Claims (Excl. Liable) ³		4,319	5,763	4,638	5,969	18,331	21,210	25,895	
Oregon - New		2,348	3,314	2,473	3,387	10,117	11,350	14,550	
Additional		1,971	2,449	2,165	2,582	7,116	8,725	11,345	
Interstate - Agent		0	0	0	0	1,098	1,135	0	
Interstate - Liable		194	247	209	347	819	808	1,176	
Weeks Claimed (Excl. Liable) ³		28,302	32,382	27,656	31,764	115,422	144,106	161,558	
Oregon		28,302	32,382	27,656	31,764	107,333	134,387	151,438	
Interstate - Agent		0	0	0	0	8,089	9,719	10,120	
Interstate - Liable		1,481	1,857	1,455	1,837	5,539	6,457	8,644	
New Combined Wage Claims		110	147	95	114	472	388	644	
Non-monetary Determinations & Redeter.		1,391	1,643	1,733	1,743	6,864	9,216	9,040	
PAYMENTS: REGULAR BENEFITS									
First Payments		1,716	2,130	1,792	2,076	6,631	6,664	9,262	
Payments Issued		27,251	31,484	27,206	30,801	101,907	129,866	144,757	
Gross Amount of Payments (\$) ³		\$9,123,707	9,944,330	\$9,147,563	9,799,164	\$34,616,281	\$43,780,835	46,078,138	
Average Check Amount (\$) ³		\$335	316	\$336	318	\$340	\$337	318	
Number Exhausting Benefits		515	683	525	616	2,299	2,196	3,240	
TRUST FUND									
Balance (in Millions) (\$)		\$2,878.78	\$2,364.	\$2,878.04	\$2,208.85	\$2,739.66	\$2,722.6	\$2,208.85	

¹ EB Trigger Graph:

<http://www.oregon.gov/EMPLOY/Agency/Documents/Current%20Unemployment%20Insurance%20Reports/IUR.pdf>

² NTUR: Unemployment Compensation Amendment Of 1992 specifies that a 2 month average NTUR be used to determine duration levels.

³ Excludes WORKSHARE program

For current and historic UI reports, visit:

<http://www.oregon.gov/EMPLOY/Agency/Pages/UI-Reports.aspx>

Week # :	45
Ending:	November 14, 2015

	This Week	Last Week	Cumulative YTD
EXTENDED BENEFITS (EB)			
Initial Claims (Excl. Liable)	0	0	3
Weeks Claimed (Excl. Liable)	0	0	0
Gross Amount of Payments (\$)	\$0	\$0	\$0
Number Exhausting Benefits	0	0	0

Oregon HEB Trigger "OFF" 04/07/2012.

http://www.workforcesecurity.doleta.gov/unemploy/claims_arch.asp

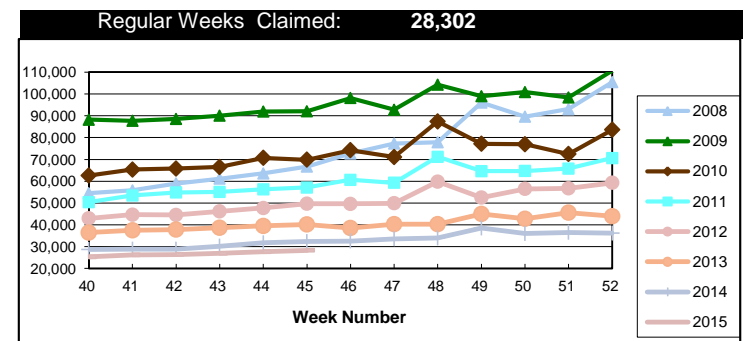
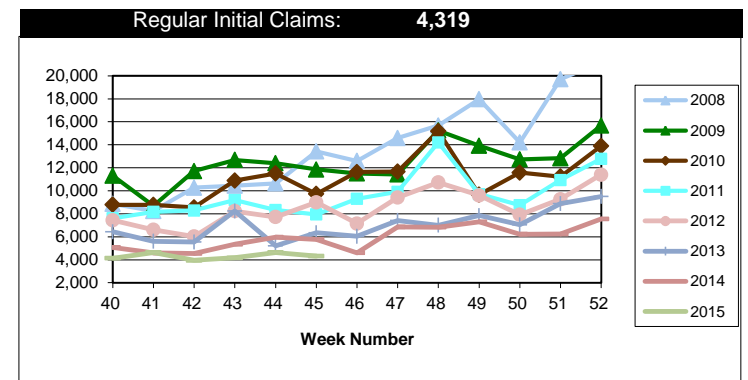
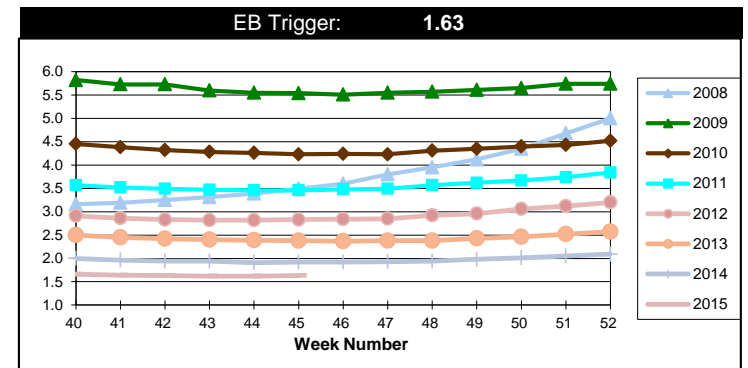
Misc Additional Benefits (AB)			
Initial Claims (Excl. Liable)	0	0	4
Weeks Claimed (Excl. Liable)	3	3	205
Gross Amount of Payments (\$)	0	0	\$0
Number Exhausting Benefits	0	0	0

TRADE ADJUSTMENT ACT (TRA)			
Training Plans	3	0	136
Initial Claims	3	23	420
Weeks Claimed	216	223	14,581
Gross Amount of TRA Payments (\$)	\$97,977	\$100,888	\$6,582,600
Certifications	0	0	3
Gross Amount of A/RTAA Payments (\$)	102,084	99,486	\$3,854,520

WORKSHARE PROGRAM (WS)			
Initial Claims	83	112	2,655
Weeks Claimed	459	383	16,267
Gross Amount of Payments (\$)	\$43,798	\$35,922	\$1,516,890
# of Workshare Plans	158	163	6,727

TRAINING UI (TUI)			
Applications Accepted	37	45	2,467
Approved	35	37	2,136
Weeks Claimed	912	910	29,190
Gross Amount of Payments (\$)	\$175,288	\$189,815	\$7,637,195

SUPPLEMENTAL UI for DISLOCATED WORKERS (SUD)			
Initial Claims	24	20	1,165
Weeks Claimed	404	396	21,174
Gross Amount of Payments (\$)	\$151,862	\$156,223	\$7,684,249



For current and historic UI reports, visit:



<http://www.oregon.gov/EMPLOY/Agency/Pages/UI-Reports.as>



(503) 947-1360



Week # :	45
Ending:	November 14, 2015

SELF EMPLOYMENT (SEA) MONTHLY		October 2015	Cumulative
Referred		56	748
Enrolled		56	747
Completed		53	613
Weeks Claimed	259	1,097	14,609
Gross Amount of Payments (\$)	116,591	\$492,817	\$6,532,816

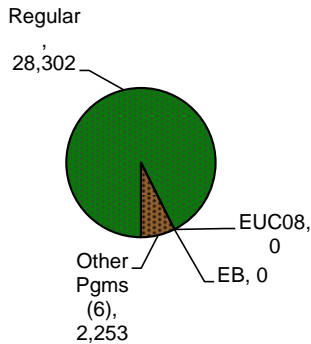
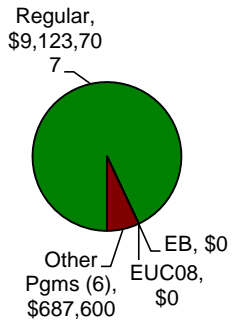
These are MONTHLY counts; data in BOLD is weekly.

EMERGENCY UNEMPLOYMENT COMPENSATION 08 (EUC08)	This Week	Last Week	Cumulative
Initial Claims (Excl. Liable)	0	0	11
Weeks Claimed (Excl. Liable)	0	0	30
Gross Amount of Payments (\$)	\$0	\$0	\$27,369
Number Exhausting Tier 1 Benefits	0	0	4
Number Exhausting Tier 2 Benefits	0	0	0
Number Exhausting Tier Z Benefits (14th week of Tier 2)	0	0	0
Number Exhausting Tier 3 Benefits	0	0	0
Number Exhausting Tier 4 Benefits	0	0	0

EUC began 07/06/2008

Benefits Paid - By Program
Total: \$9,811,307

Weeks Claimed - By Program
Total: 30,555



Other Programs Include AB, TRA, TAA, WS, TUI, SUD, SEA
 For current and historic UI reports, visit:

<http://www.oregon.gov/EMPLOY/Agency/Pages/UI-Reports.aspx>

