

UNEMPLOYMENT INSURANCE WEEKLY STATISTICS

State of Oregon
EMPLOYMENT DEPARTMENT
 UI Operations and Program Support

(503) 947-1360
Stepheni.K.Hutton@oregon.gov
www.oregon.gov

LABOR FORCE DATA		Last Month	Prior Month	Last Year
		November 2015	October 2015	November 2014
Oregon Civilian Labor Force		1,991,474	1,982,847	1,967,265
Total Number Unemployed		104,787	106,437	127,807
UNEMPLOYMENT RATES (CIVILIAN) (%)		Labor Force & Rate Data: www.QualityInfo.org		
Total Unemployment:	Oregon	5.30%	5.40%	6.50%
	National	4.80%	4.80%	5.50%
Seasonally Adjusted:	Oregon	5.70%	6.00%	6.80%
	National	5.00%	5.00%	5.80%

Week # :	52		THIS WEEK		LAST WEEK		Last Month	Prior Month	Last Year
	Ending:	January 2, 2016	2015	2014	2015	2014	November 2015	October 2015	November 2014
UNEMPLOYMENT RATES (%)									
Insured Unemployment: Oregon		2.36	2.29	2.36	2.31	1.70	1.50	2.01	
EB Trigger ¹		1.81	2.09	1.81	2.05				
Adjusted Insured Unemployment		2.23	2.61	2.23	2.57				
National Average TUR ²		6.00	7.00	6.00	7.10				
REGULAR CLAIMS (UI, UCFE, UCX)									
Initial Claims (Excl. Liable) ³		7,736	7,537	6,915	6,235	21,308	18,331	24,529	
Oregon - New		2,954	3,268	3,527	3,386	11,074	10,117	13,342	
Additional		4,782	4,269	3,388	2,849	9,092	7,116	11,187	
Interstate - Agent		0	0	0	0	1,142	1,098	0	
Interstate - Liable		176	179	179	222	817	819	957	
Weeks Claimed (Excl. Liable) ³		38,831	36,172	32,272	36,515	127,009	115,422	144,904	
Oregon		38,831	36,172	32,272	36,515	118,156	107,333	135,931	
Interstate - Agent		0	0	0	0	8,853	8,089	8,973	
Interstate - Liable		1,759	1,982	1,669	2,004	6,102	5,539	7,559	
New Combined Wage Claims		120	142	109	172	577	472	557	
Non-monetary Determinations & Redeter.		1,402	1,665	1,545	2,191	6,315	6,864	5,812	
PAYMENTS: REGULAR BENEFITS									
First Payments		3,121	2,475	2,246	2,743	9,067	6,631	8,463	
Payments Issued		36,672	35,303	31,876	36,340	112,544	101,907	128,431	
Gross Amount of Payments (\$) ³		\$12,167,124	11,047,479	\$10,518,276	11,244,643	\$37,545,234	\$34,616,281	40,230,275	
Average Check Amount (\$) ³		\$332	313	\$330	309	\$334	\$340	313	
Number Exhausting Benefits		586	1,306	594	635	2,624	2,299	2,572	
TRUST FUND									
Balance (in Millions) (\$)		\$2,823.42	\$2,312.09	\$2,833.65	\$2,321.98	\$2,868.96	\$2,739.66	\$2,347.62	

¹ EB Trigger Graph: <http://www.oregon.gov/EMPLOY/Agency/Documents/Current%20Unemployment%20Insurance%20Reports/IUR.pdf>
² NTUR: Unemployment Compensation Amendment Of 1992 specifies that a 2 month average NTUR be used to determine duration levels. ³ Excludes WORKSHARE program

For current and historic UI reports, visit: <http://www.oregon.gov/EMPLOY/Agency/Pages/UI-Reports.aspx>

Week # :	52
Ending:	January 2, 2016

	This Week	Last Week	Cumulative YTD
EXTENDED BENEFITS (EB)			
Initial Claims (Excl. Liable)	0	0	3
Weeks Claimed (Excl. Liable)	0	0	0
Gross Amount of Payments (\$)	\$0	\$0	\$0
Number Exhausting Benefits	0	0	0

Oregon HEB Trigger "OFF" 04/07/2012.

http://www.workforcesecurity.doleta.gov/unemploy/claims_arch.asp

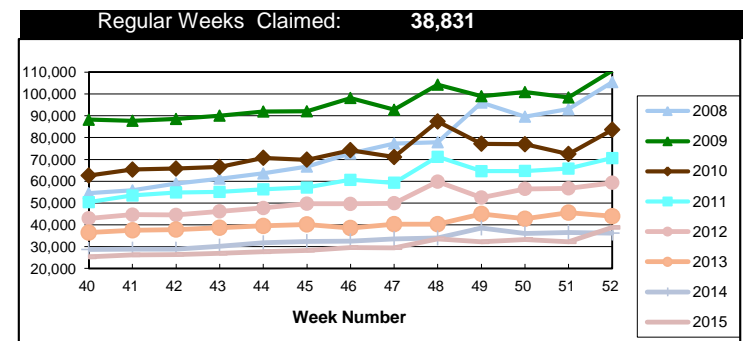
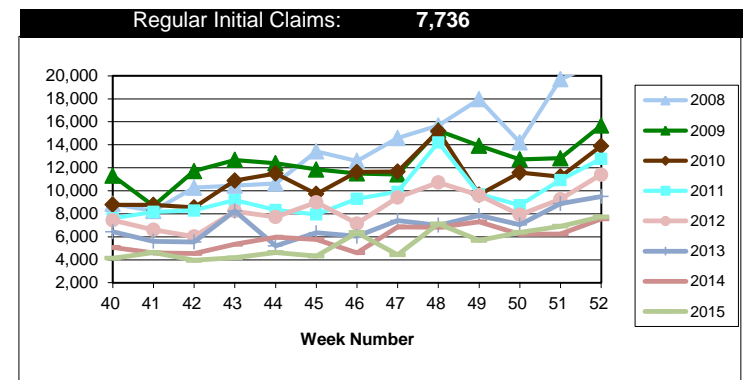
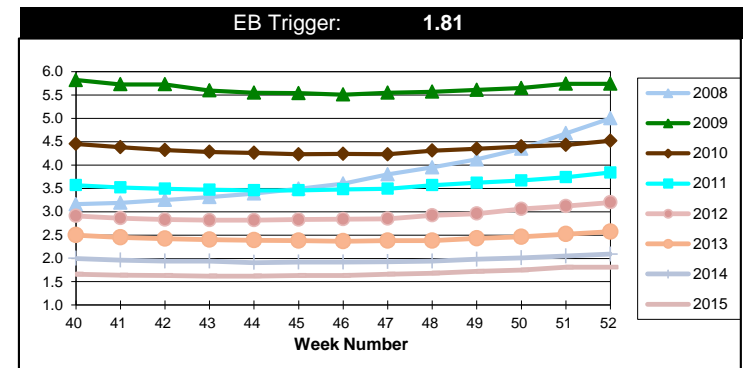
Misc Additional Benefits (AB)			
Initial Claims (Excl. Liable)	0	0	4
Weeks Claimed (Excl. Liable)	3	3	234
Gross Amount of Payments (\$)	0	0	\$0
Number Exhausting Benefits	0	0	0

TRADE ADJUSTMENT ACT (TRA)			
Training Plans	20	16	192
Initial Claims	121	75	692
Weeks Claimed	193	180	16,039
Gross Amount of TRA Payments (\$)	\$90,792	\$82,174	\$7,339,128
Certifications	0	0	9
Gross Amount of A/RTAA Payments (\$)	5,946	48,543	\$4,264,061

WORKSHARE PROGRAM (WS)			
Initial Claims	39	16	3,092
Weeks Claimed	361	398	19,549
Gross Amount of Payments (\$)	\$38,511	\$35,821	\$1,805,641
# of Workshare Plans	156	160	7,820

TRAINING UI (TUI)			
Applications Accepted	22	41	2,768
Approved	20	37	2,395
Weeks Claimed	777	822	35,254
Gross Amount of Payments (\$)	\$143,834	\$148,597	\$8,788,109

SUPPLEMENTAL UI for DISLOCATED WORKERS (SUD)			
Initial Claims	17	16	1,296
Weeks Claimed	371	386	23,945
Gross Amount of Payments (\$)	\$141,806	\$148,982	\$8,756,558



For current and historic UI reports, visit:



<http://www.oregon.gov/EMPLOY/Agency/Pages/UI-Reports.as>



(503) 947-1360



Week # :	52
Ending:	January 2, 2016

SELF EMPLOYMENT (SEA) MONTHLY

		November 2015	Cumulative
Referred		20	785
Enrolled		19	784
Completed		49	671
Weeks Claimed	177	997	16,084
Gross Amount of Payments (\$)	79,419	\$446,349	\$7,193,072

These are MONTHLY counts; data in BOLD is weekly.

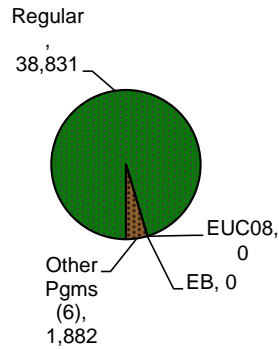
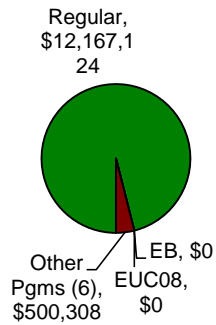
EMERGENCY UNEMPLOYMENT COMPENSATION 08 (EUC08)

	This Week	Last Week	Cumulative
Initial Claims (Excl. Liable)	0	0	14
Weeks Claimed (Excl. Liable)	0	0	30
Gross Amount of Payments (\$)	\$0	\$0	\$27,919
Number Exhausting Tier 1 Benefits	0	0	4
Number Exhausting Tier 2 Benefits	0	0	0
Number Exhausting Tier Z Benefits (14th week of Tier 2)	0	0	0
Number Exhausting Tier 3 Benefits	0	0	0
Number Exhausting Tier 4 Benefits	0	0	0

EUC began 07/06/2008

Benefits Paid - By Program
Total: \$12,667,432

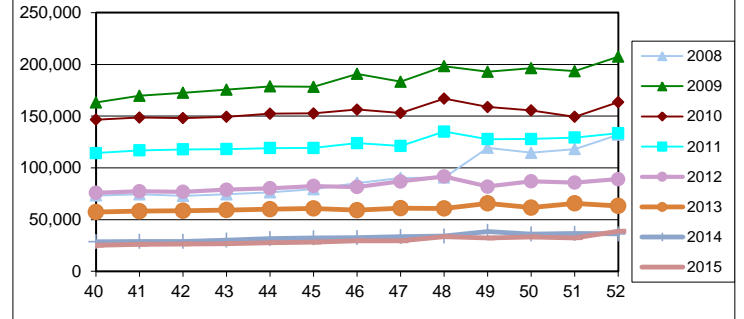
Weeks Claimed - By Program
Total: 40,713



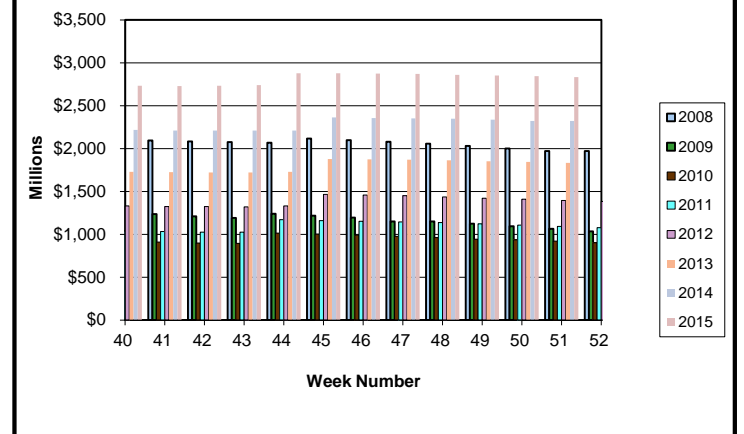
⁶ Other Programs Include AB, TRA, TAA, WS, TUI, SUD, SEA
 For current and historic UI reports, visit:

<http://www.oregon.gov/EMPLOY/Agency/Pages/UI-Reports.aspx>

Total Weeks Claimed (Reg + EB + EUC + OEB+ Other Pgm: 40,713)



Trust Fund Balance: \$2,823.42 (in millions)



Total Benefits Paid: \$12,667,432 (During Week)

