



OR Building Performance Standard (BPS) Support from Energy Trust of Oregon



Agenda



Introductions and Overview



Oregon Building Performance Standard (BPS)



Strategic Energy Management (SEM)



BPS Pathway



Q&A Session

About us

Independent
nonprofit

Serving 2.4 million customers of
Portland General Electric,
Pacific Power, NW Natural,
Cascade Natural Gas and Avista

Providing
access to
energy

Generating
homegrown,
renewable
power

Building a
stronger Oregon
and SW
Washington

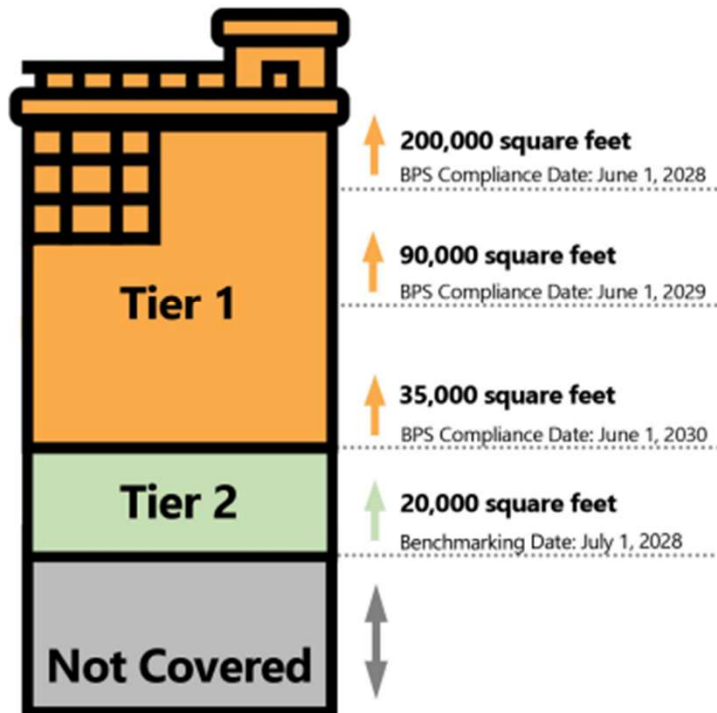


Oregon Building Performance Standard (BPS)

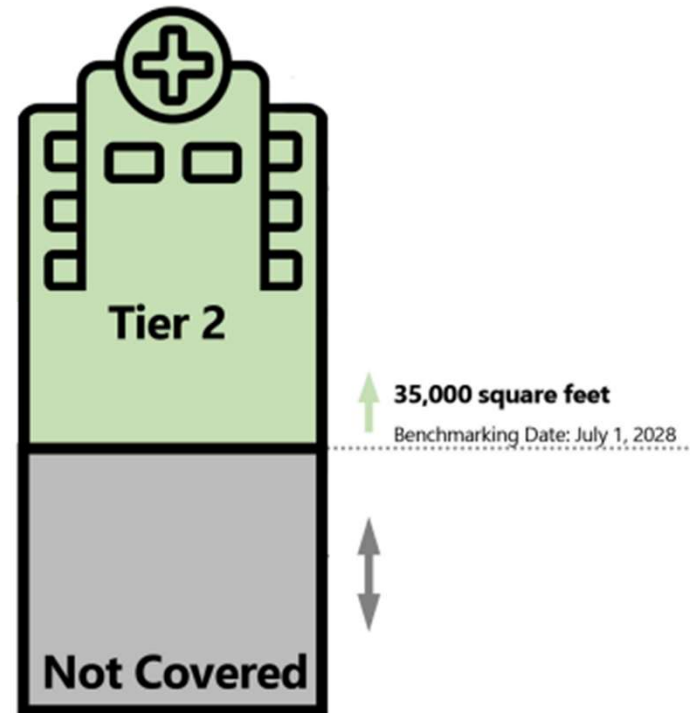
- HB 3409 passed July 2023; rules into effect Jan 2025
- Tier 1 (more to do) and Tier 2 (less to do)
- Three compliance dates for Tier 1
- Requires qualified individuals
- Early compliance incentive window is open
- Energy projects incentive window opens soon

Tier 1 and Tier 2 Buildings

**NON-RESIDENTIAL,
HOTELS, AND MOTELS**

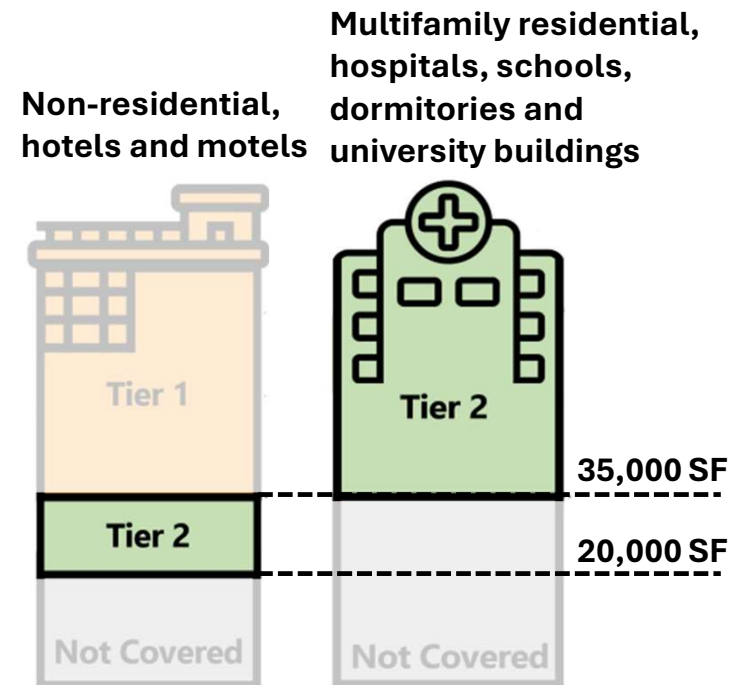


**MULTIFAMILY RESIDENTIAL,
HOSPITALS, SCHOOLS, DORMITORIES,
AND UNIVERSITIES BUILDINGS**



Requirements for Tier 2 buildings - Benchmarking

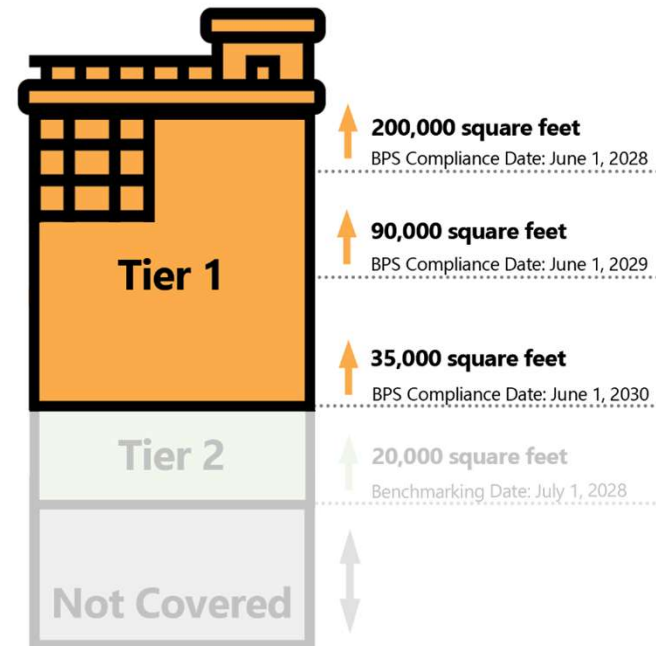
1. Identify Qualified Energy Manager (QEM)
2. Report EUI via Energy Star Portfolio Manager (ESPM)
3. Calculate EUI target (EUI_t)
4. Submit forms



Requirements for Tier 1 Buildings – Building Performance

Non-Residential, Hotels, and Motels

1. Identify Qualified Person (QP)
2. Report EUI via Energy Star Portfolio Manager (ESPM)
3. Calculate EUI target (EUI_t)
4. Document O&M Program
5. Develop Energy & Emissions Management Plan
6. Meet EUI_t, or Perform Energy Audit & execute EEM's
7. Submit forms





Upcoming Events



On Demand Learning



Extended Courses



Training Submittal Form



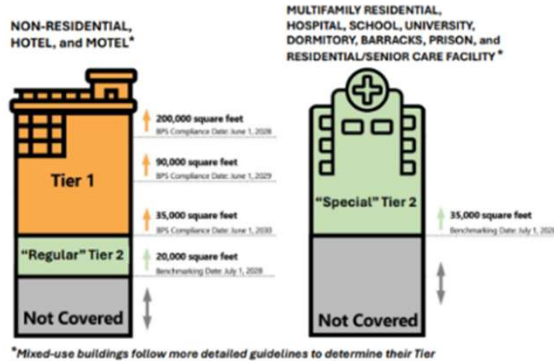
BPS LIVE VIRTUAL EVENTS

Event

There are no webinars scheduled at this time.
Please find below the recording and slide decks from previous sessions.

SEM BPS RECORDINGS & DECKS

- [Short 5m Video on Calculating EUI](#)
- [SEM BPS Overview from Webinar #1](#)
- [SEM BPS Webinar #1 Slide Deck \(Overview of BPS\)](#)
- [SEM BPS Webinar #2 Slide Deck \(Key Roles\)](#)
- [SEM BPS Webinar #3 Slide Deck](#)
- [SEM BPS Webinar #4 Slide Deck](#)



ODOE BPS LINKS

- [ODOE BPS Website](#)
- [Oregon BPS Rules \(OR rev to ASHRAE std 100\)](#)
- [Subscribe to Email Updates from ODOE](#)
- [ODOE BPS Incentives Webpage](#)
- [ODOE BPS EUI Target Tool](#)

SEM BPS TOOLS

- [SEM BPS Building Inventory](#)
- [SEM BPS Early Compliance Incentive Tool](#)
- [Oregon BPS Acronyms](#)

ENERGY STAR PORTFOLIO MANAGER (ESPM)

- [Energy Star Portfolio Manager Login Page](#)
- [ESPM 13m Video on Benchmarking Ordinances](#)
- [ESPM Trainings](#)
- [ESPM Quick Start Guide \(pdf\)](#)



Testimonial by a SEM Participant

Michael Anderson

Operations Planner & Fleet Manager
Dept of Public Safety Standards & Training

Strategic Energy Management (SEM) Overview



SEM with Energy Trust

More holistic than just an equipment upgrade

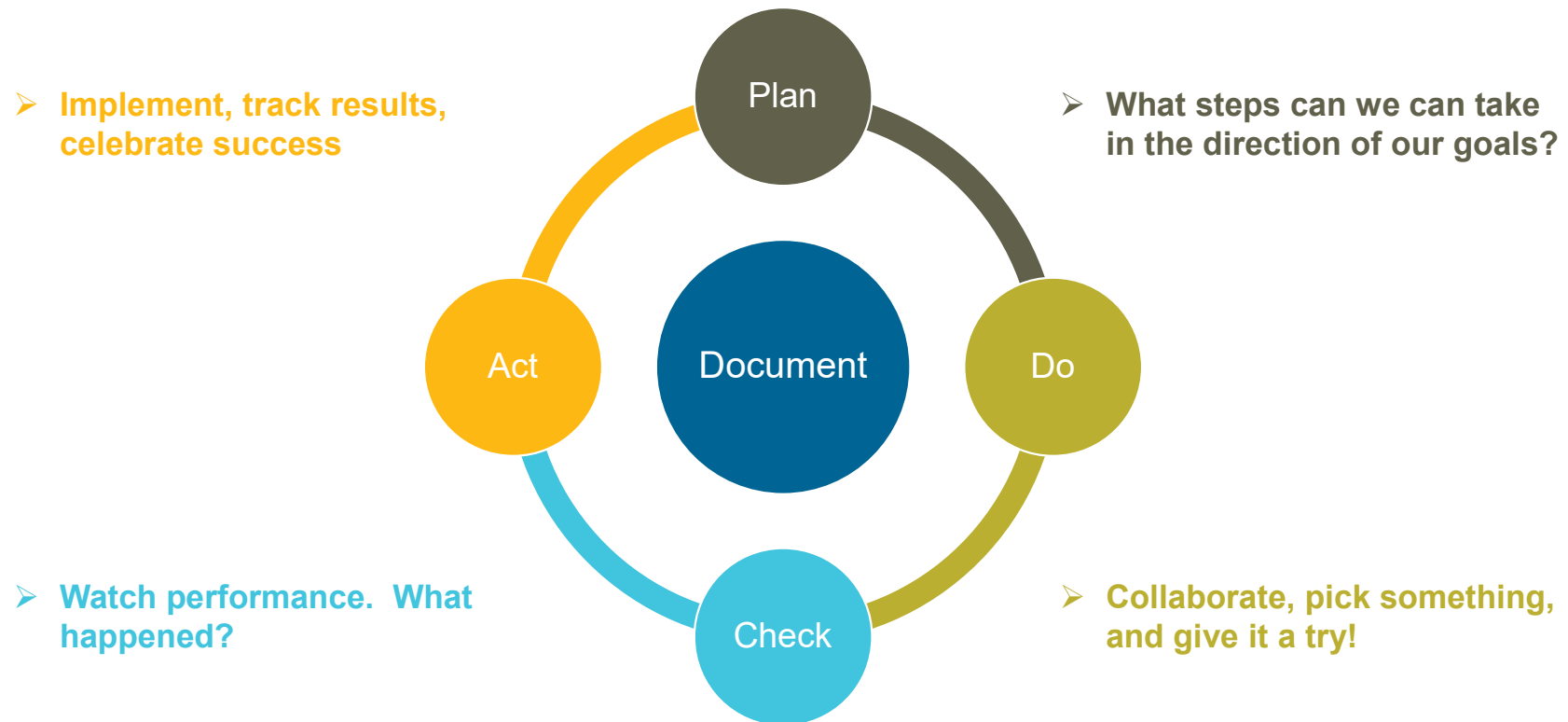
Examines the procedures and behaviors of energy use

Primary focus on no- or low-cost operations and maintenance improvements

Trains staff to develop and implement strategic energy management strategies

Works with other energy-saving or sustainability initiatives to create an integrated approach to energy management

Continuous Improvement





Incentives

Milestones

- Up to five annual milestones @ \$1,000 each

Interns

- Up to \$10,000 for work focused on SEM activities

Education

- Up to \$1,800 for Building Operator Certification
- Up to \$1,000 for Fundamentals of Energy Efficient Operations
- No Cost EnergyWise Custodial Training
- Fully re-imbursed Building Automation System Training

Energy Savings

- \$0.02 / kWh
- \$0.20 / Therm



SEM Benefits

- Improve operations
- Lower costs and emissions
- Enhance occupant engagement
- Empower and train staff
- Receive financial Incentives



Build your Energy Team

Executive Sponsor

Provides management level support

Energy Champion

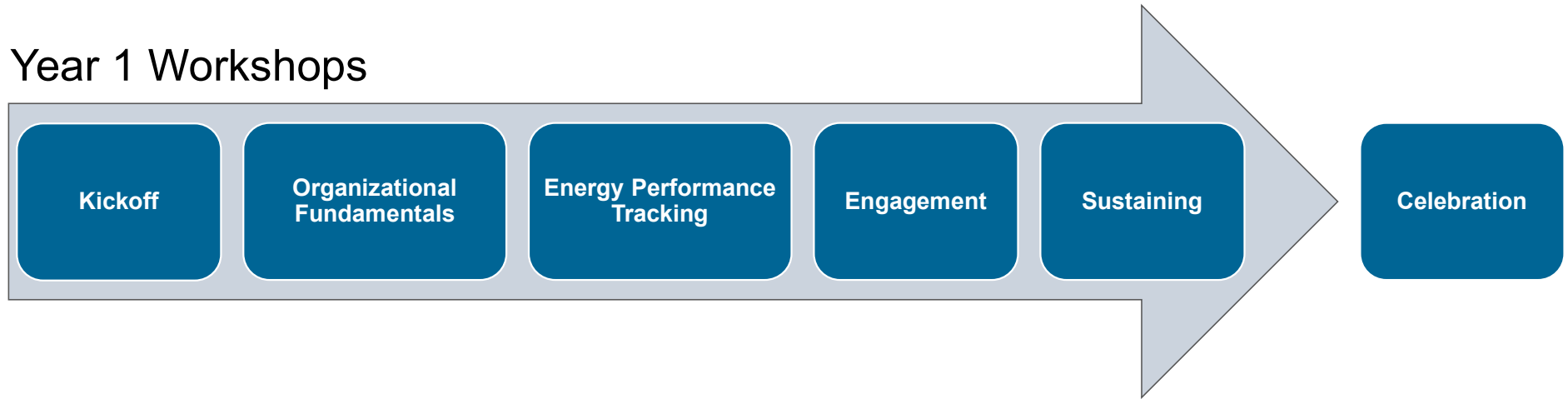
Main point of contact

Backup Energy Champion

Additional Members

The CSEM Participant Journey

Year 1 Workshops



Supporting Activities



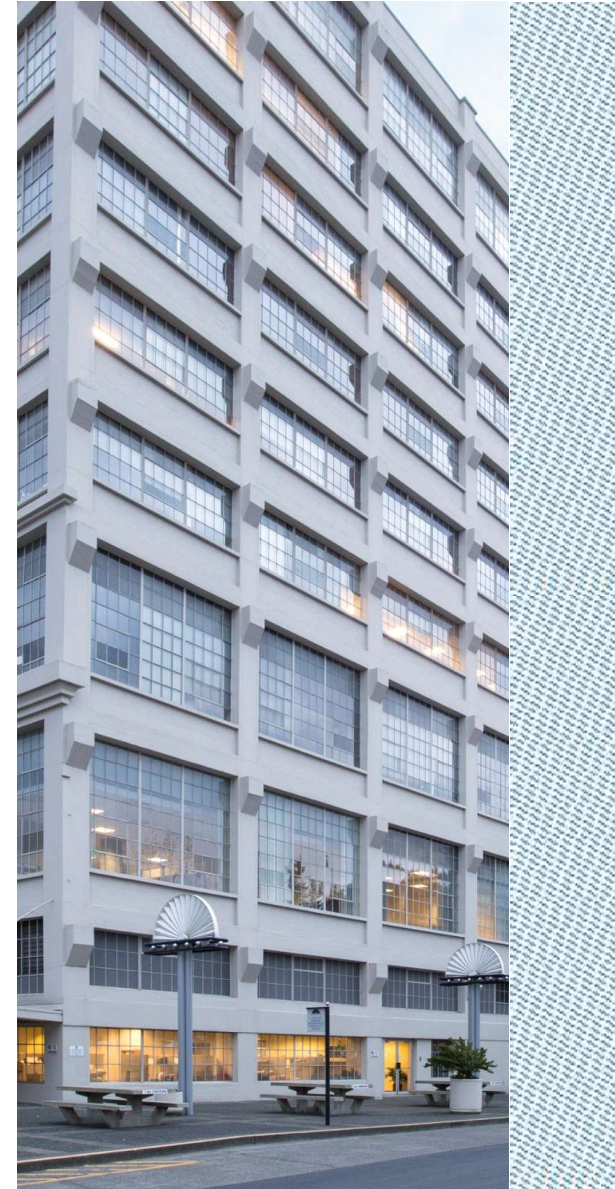
Other Opportunities



BPS Pathway Overview

BPS Pathway

- New Energy Trust program launching March 2026
- Supports EUI reduction through condensed SEM curriculum
- No-cost program with up to \$3,000 in participation incentives
- 12-month engagement period
- Designed for building owners who are not a good fit for SEM



How it Works





Supported Outcomes

BPS Pathway will support your efforts to....

- ✓ Reduce your building's EUI
- ✓ Benchmark buildings in ESPM
- ✓ Develop a draft Energy Management Plan*
- ✓ Develop a draft O&M Program*
- ✓ Leverage Energy Trust incentive opportunities
- ✓ Define a path to compliance

**BPS Pathway will provide tools & training on O&M Program and EMP but will not review drafts or confirm compliance*

Comparison and Next Steps

Strategic Energy Management and BPS Pathway

- **Both**

- Help participants navigate BPS
- Available to buildings served by PGE, Pacific Power, NW Natural, Cascade, Avista
- Enrolling now for cohorts starting early 2026 (limited space available)

- **SEM**

- Deeper, ongoing coaching
- Higher incentives
- Commercial and Multi-family cohort options
- For orgs using $\geq 500,000$ kWh/yr or 20,000 therms/yr (limited # of buildings/meters)

- **BPS Pathway**

- Lighter touch, shorter offering, solely on BPS
- Focuses on Tier 1 buildings that are not a good fit for SEM

How to Connect, Learn More, Enroll

- SEM

- Jon Peterson, jdpeterson@trccompanies.com
- Informational Sessions
 - Tuesday 12/16/25, 2:00 to 2:45, [Join the meeting](#)
 - Thursday 12/18/25, 10:00 to 10:45 am, [Join the meeting](#)

- BPS Pathway

- Grace Callahan, gcallahan@aesc-inc.com
- Informational session
 - Thursday 12/11/25, 11:00 to 11:30, [Register here](#)
 - Additional sessions to be scheduled



Thanks for joining. We're here to help!

