



# Data Centers in the City of Hillsboro

Oregon Data Center Advisory Committee

March 27, 2026

# Introduction



**Niki Iverson**  
Water Department Director  
JWC General Manager



**Dan Dias**  
Economic & Community  
Development Director



# Presentation Overview

- Data Centers & Their Differences
- Target Industry and Economic Development Objectives
- Hillsboro as a Prime Location
- Industrial Area Overview
- Joint Water Commission (JWC)
- JWC & Hillsboro Water Service Areas
- Hillsboro's Water System Capacity
- Water Quality in Hillsboro
- Long-term Water Supply Planning
- Hillsboro's Additional Source



# Data Centers & Their Differences



## Data Center Format Types

### **Colocation Data Centers**

Facilities that provide space, power, cooling, and networking for multiple businesses to house their IT infrastructure. Organizations share the facility but maintain control over their own hardware.

### **Enterprise Data Centers**

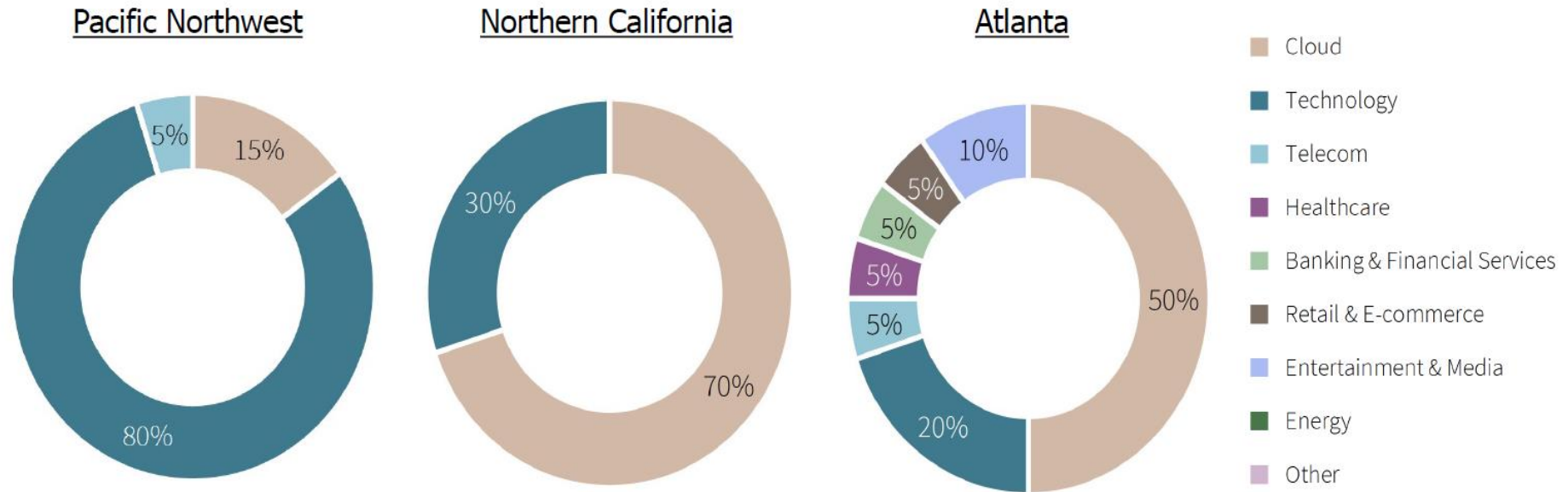
Private data centers owned and operated by a single organization, typically used to support its internal IT needs.

### **Hyperscale Data Centers**

Massive facilities designed to support scalable and high-performance computing needs, typically owned by cloud service providers like Amazon.

# Use of Data Centers

## User Demand by Industry Across Various Markets



Source: JLL, North America Data Center Report, H2 2023, <https://www.us.jll.com/content/dam/jll-com/documents/pdf/research/americas/us/jll-north-america-data-center-report-h2-2023.pdf>

# Competitiveness Considerations



## Primary Considerations

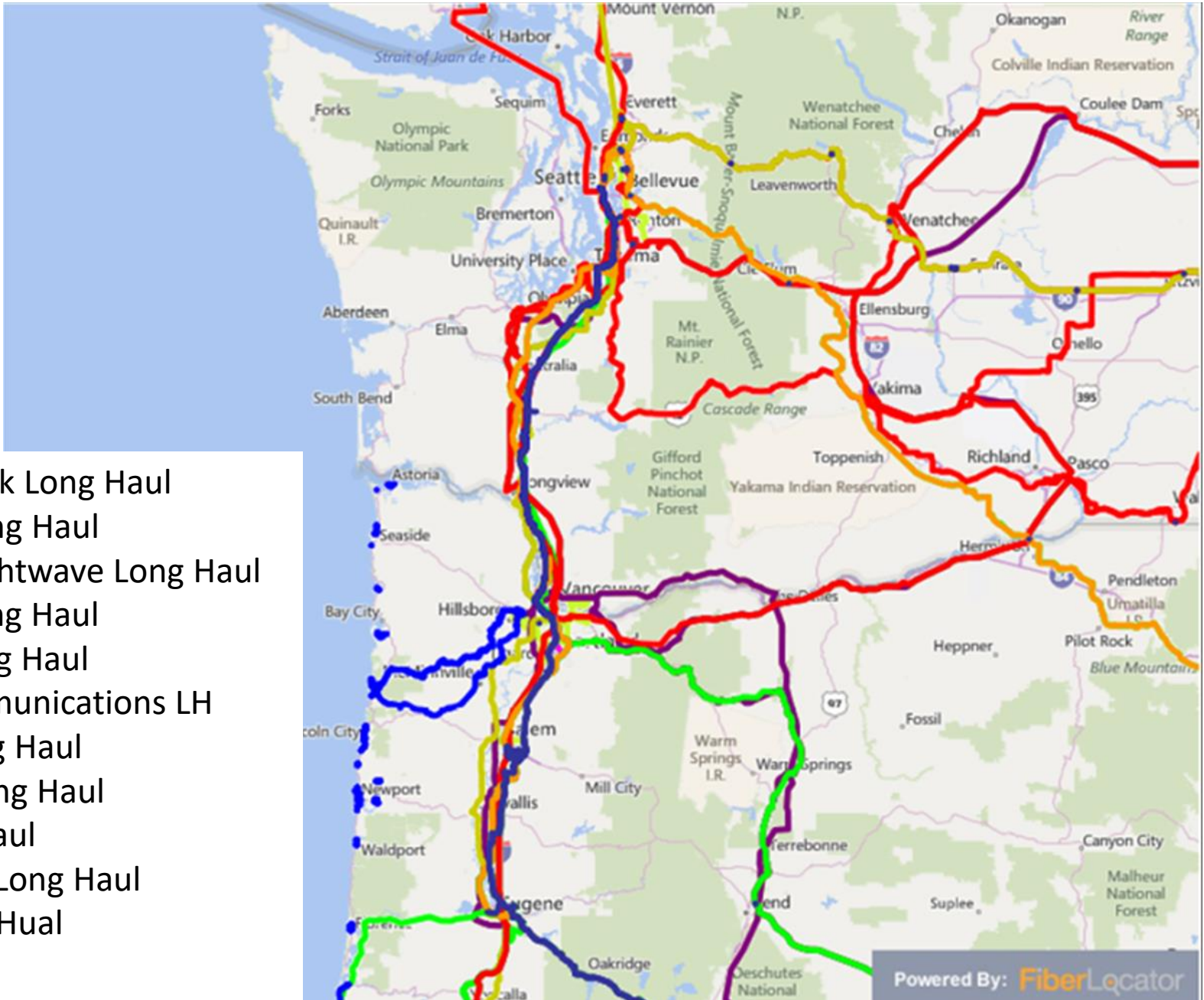
- Time to market
- Ownership/operational costs
- Access to fiber connectivity
- Access to clean/reliable/affordable energy
- Land availability and costs
- Tax/regulatory/incentive structures
- Access to skilled construction and technology workforce

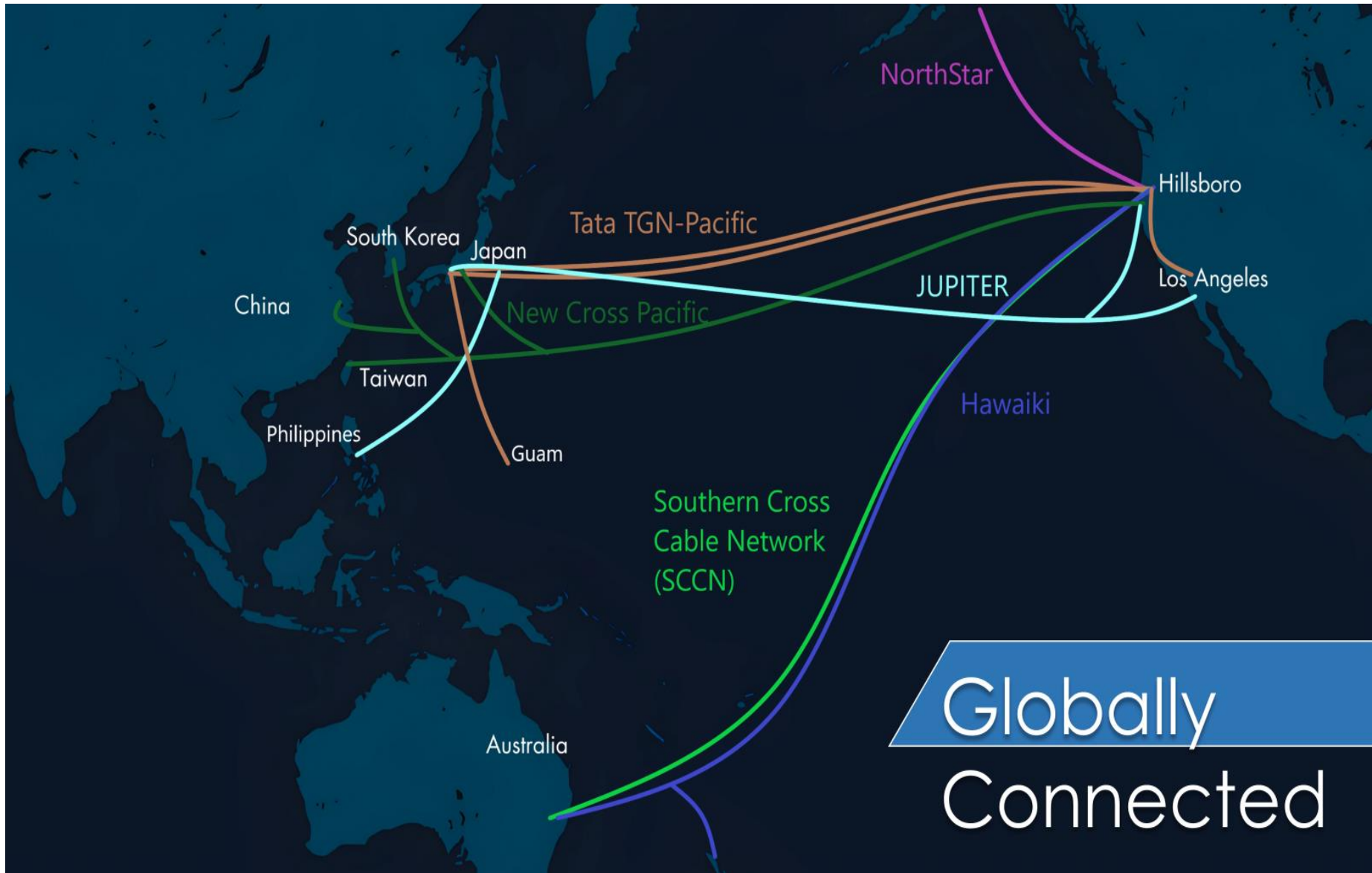
## Other Considerations

- Proximity to certain industries/customers
- Climate/natural disaster risks



- CenturyLink Long Haul
- Cogent Long Haul
- Electric Lightwave Long Haul
- Integra Long Haul
- Level3 Long Haul
- Noel Communications LH
- Sprint Long Haul
- Verizon Long Haul
- XO Long Haul
- Zayo Dark Long Haul
- Zayo Long Hual
- CoastCom





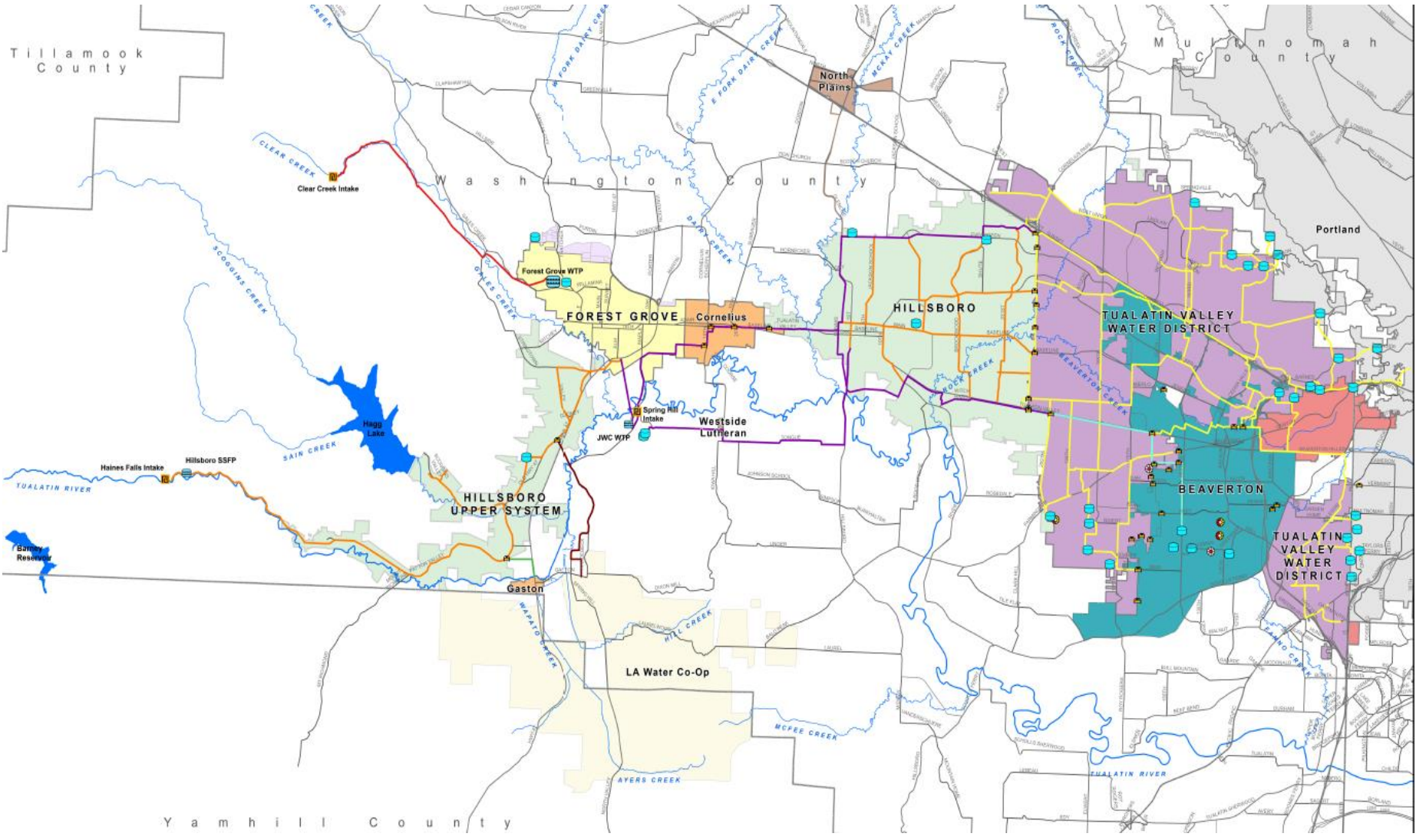
Globally

Connected



## Joint Water Commission

- Primary drinking water supplier in Washington County.
- Four agencies share ownership in the JWC, Hillsboro, Forest Grove, Beaverton, and the Tualatin Valley Water District.
- Hillsboro is the managing agency of the JWC and staffs the JWC Water Treatment Plant.
- The capacity of the JWC Water Treatment Plant 85 million gallons per day (MGD).



Tillamook County

Multnomah County

Washington County

Portland

FOREST GROVE

Cornelius

HILLSBORO

TUALATIN VALLEY WATER DISTRICT

HILLSBORO UPPER SYSTEM

Westside Lutheran

BEAVERTON

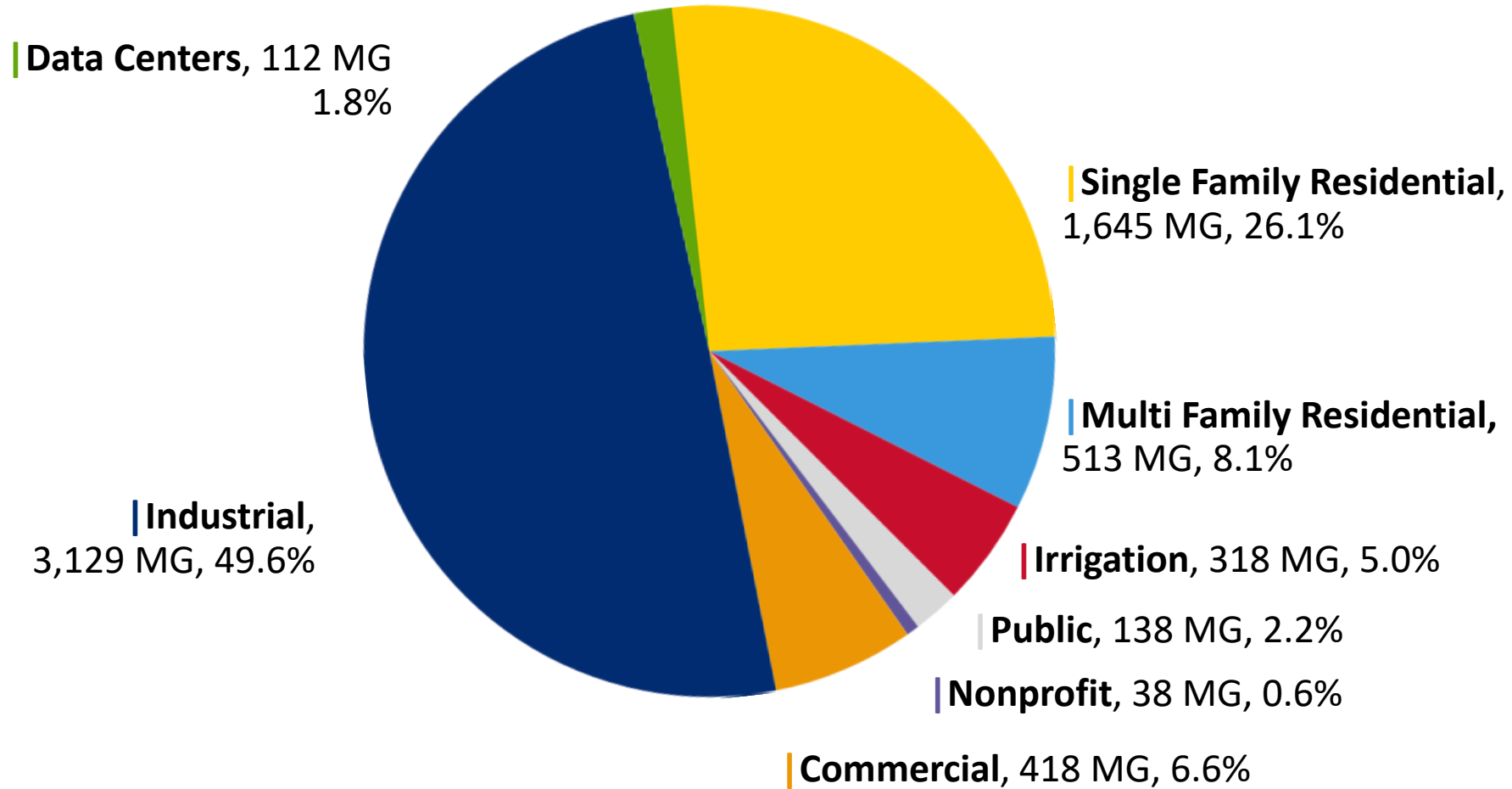
TUALATIN VALLEY WATER DISTRICT

LA Water Co-Op

Yamhill County



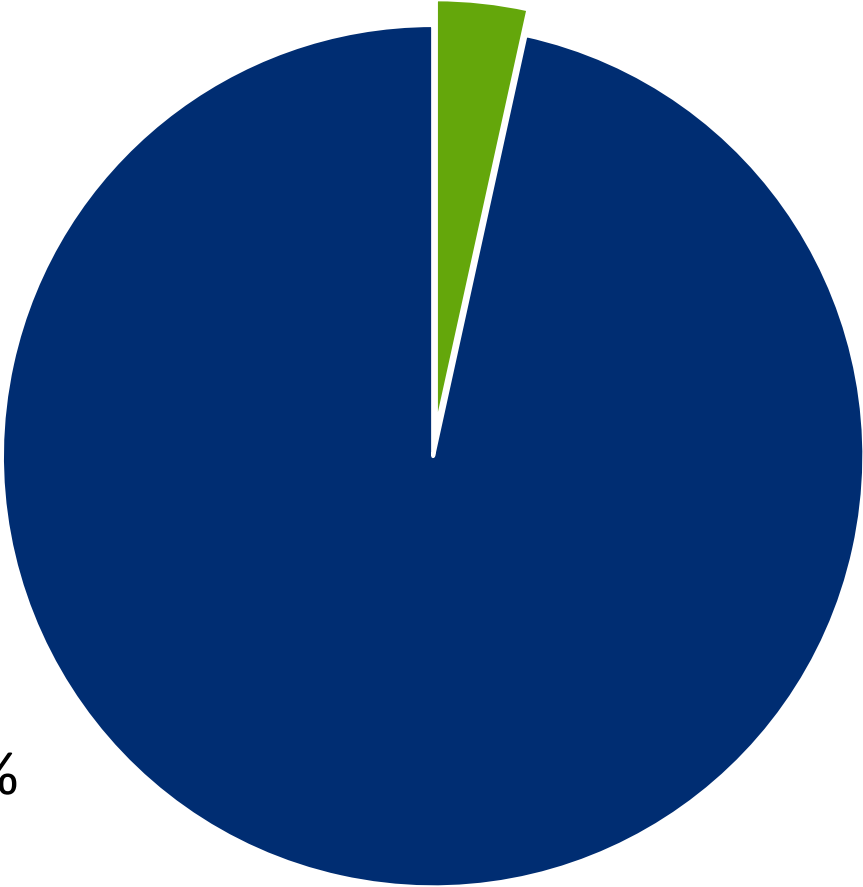
# 2025 Consumption by Customer Class



# 2025 Industrial Usage



**| Industrial,**  
3,129 MG, 97%

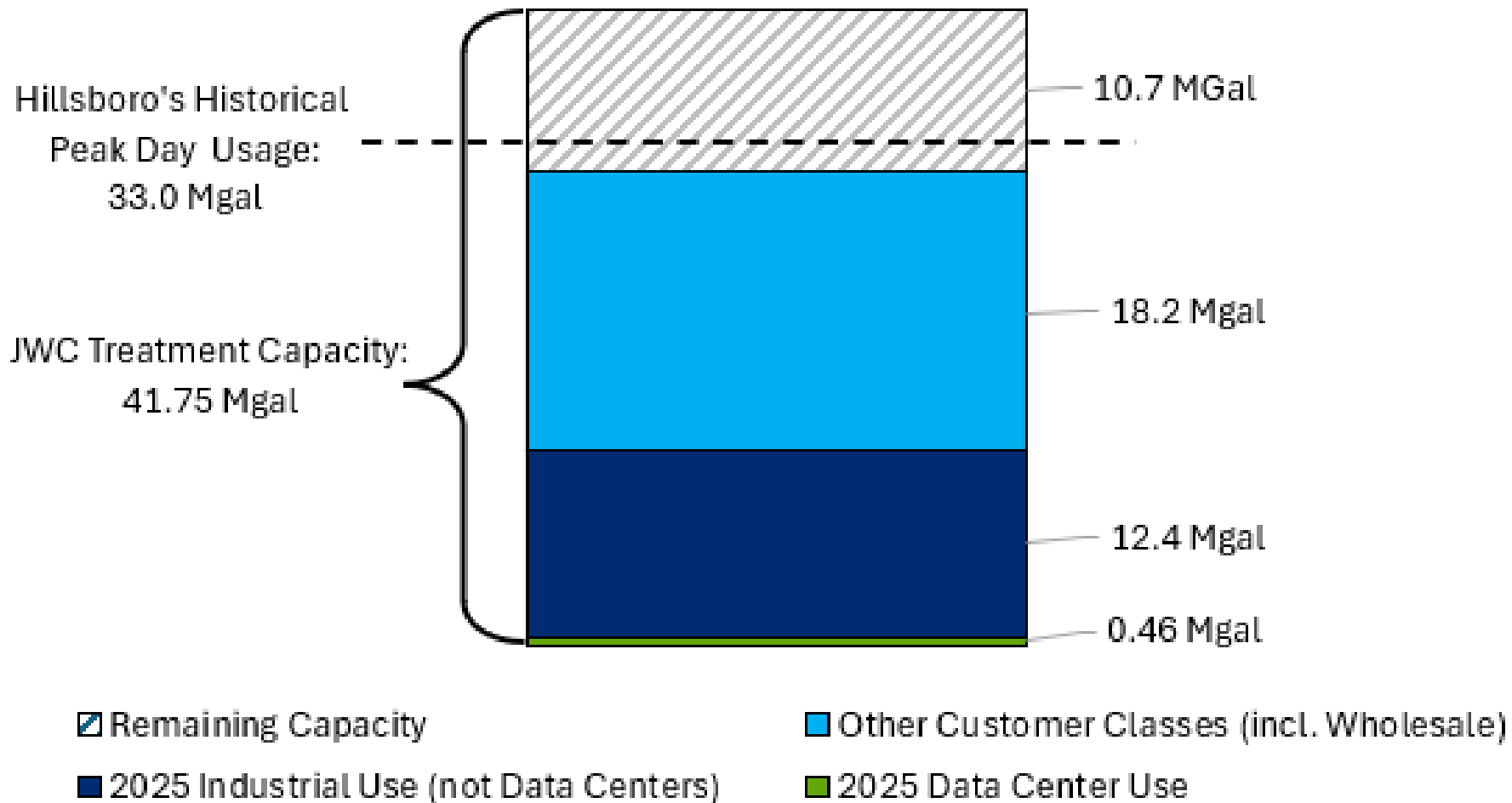


**| Data Centers,**  
112 MG, 3%



# Hillsboro Water System Capacity— Current

*Data Based on Peak Day Demands*



# Water Quality in Hillsboro

- Data Centers use high-quality potable water in Hillsboro that meets all Safe Water Drinking Act (SWDW) requirements.
- All industrial discharge goes to the sewer system, where it is treated by Clean Water Services.
- Hillsboro does not discharge to groundwater.
- Hillsboro is committed to environmental compliance and stewardship of our natural resources



# Long-term Water Supply Planning in Hillsboro



**1940** Hillsboro purchases water system and forms Utilities Commission



**1970** Original Barney Reservoir Completed



**1974** Scoggins Reservoir Completed



**1976** JWC Water Treatment Plant Completed



**1993** Cherry Grove Slow Sand Filter Plant Completed



**1996** Barney Reservoir Expansion Completed



**2013** Mid-Willamette River Selected as Hillsboro's Future Additional Source



## Hillsboro's Additional Water Source

- The Willamette Water Supply System (WWSS) is a regional partnership to design and construct a new seismically resilient drinking water supply system.
- Initial Water Treatment Plant capacity is 60 MGD, with an ability to expand up to 120 MGD in the future.
- Hillsboro's share is 15 MGD of the initial capacity and 36.2 MGD of buildout capacity.

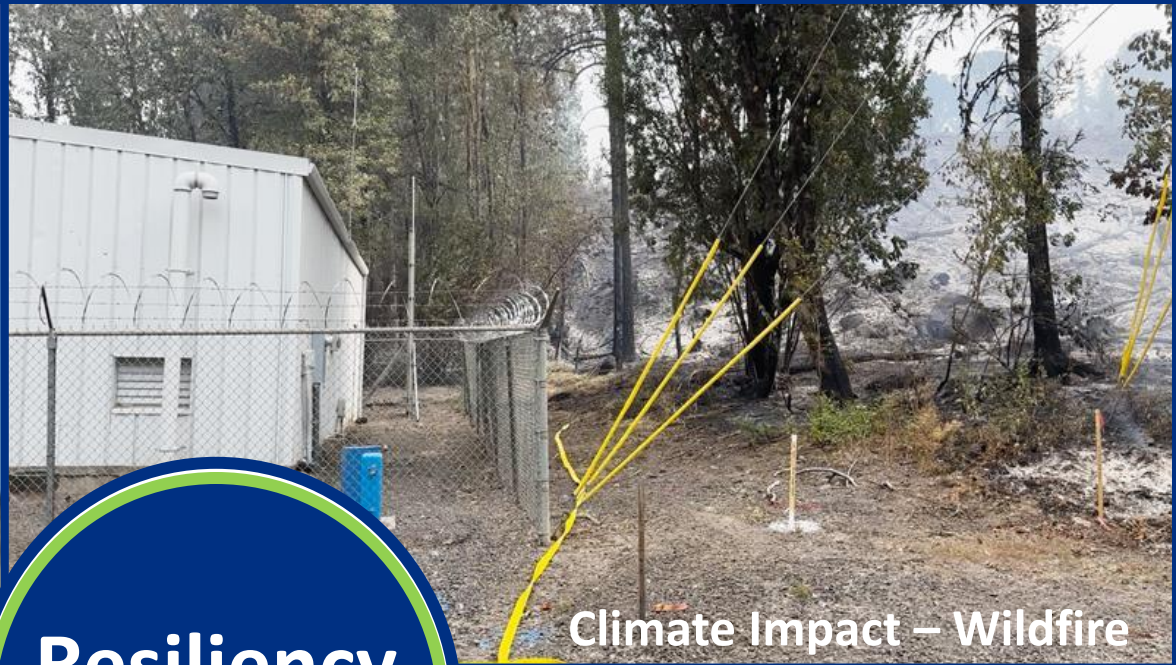
# Willamette Water Supply System



Willamette River



**Emergency Repairs**

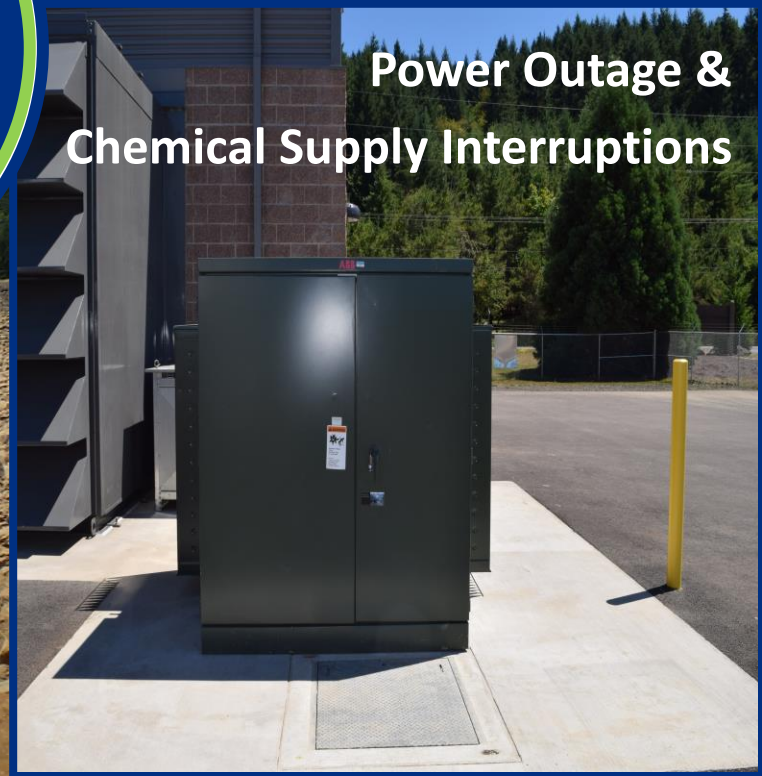


**Climate Impact – Wildfire**



**Climate Impact – Drought & Summer Water Shortage**

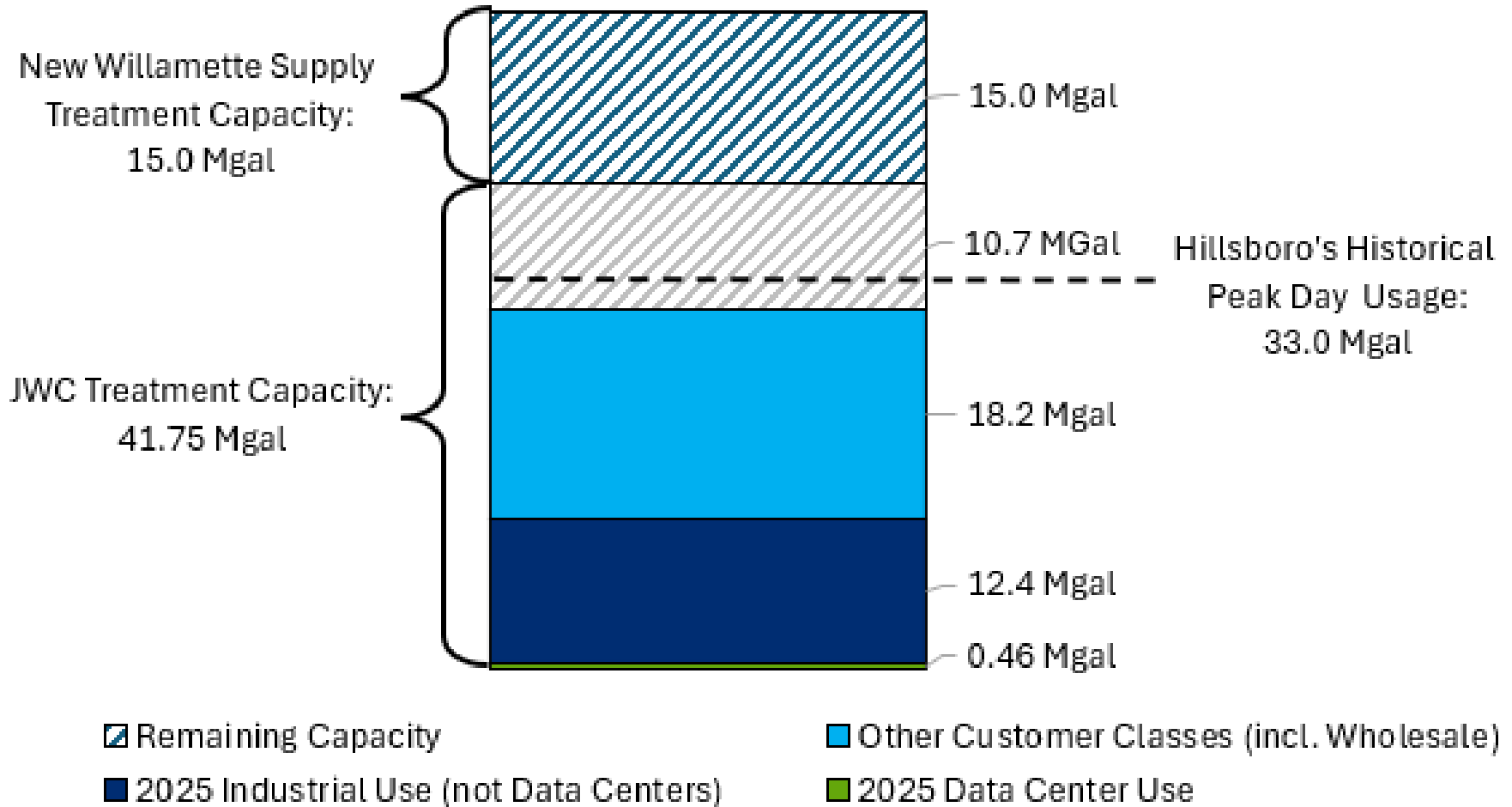
**Resiliency Planning**



**Power Outage & Chemical Supply Interruptions**

# Hillsboro Water System Capacity— Future

*Data Based on Peak Day Demands*





# Final Takeaways

- Hillsboro has a long history of water supply planning, looking 50 years ahead to meet the needs of our community.
- Hillsboro has built our infrastructure to accommodate development for all customer classes, including industrial and commercial businesses.
- Data centers are not considered large water users in the City of Hillsboro, and we do not see a significant impact on our water supply from their development.