



Oregon Renewable Energy Siting Assessment (ORESAs)

November 2021



OREGON
DEPARTMENT OF
ENERGY



OREGON

Department of
Land Conservation
& Development



INSTITUTE
FOR
NATURAL
RESOURCES



NAS WHIDBEY ISLAND

Project Overview

ORESA Project

The ORESA project is funded through a \$1.1 million grant through U.S. Department of Defense Office of Local Defense Community Cooperation (DOD-OLDCC). The grant team includes **Oregon Department of Energy**, working with the **Department of Land Conservation & Development** and **Oregon State University's Institute for Natural Resources**.

The team is also incorporating the expertise of **state, local, and tribal governments** through interagency agreements, along with input from **industry and technical advisors**, and **cross-sectoral stakeholder and community engagement**.

ORESA: Goals and Objectives

DOD Goals

Support **military compatibility through coordination** with local, regional, and state agencies and raise awareness about the military.

Project Goals

Create **relevant educational tools** for stakeholders, agencies, local governments, and policy makers about renewable energy development, military training and operational areas, economic/community benefits, land use considerations, natural, cultural, and environmental resources, and other regulatory requirements. Users can explore these resources to inform discussions related to renewable energy in a way that **minimizes conflict and supports development opportunities**.

Project Objectives

Baseline data, information, and perspectives to create **a transparent, consistent collection of trusted, accurate information** in Oregon, without recommendations or endorsements, and note where information may be imprecise or uncertain. **Project Closes March 2022.**

Renewable Energy Market & Industry Assessment (ODOE / E3)

- Model future opportunity for renewables
- Perspectives of challenges and opportunities RE development community
- **COMPLETED**

Natural Resources, Environment, & Development: Opportunities & Constraints Assessment (DLCD / CBI)

- Gather information on natural, cultural, & env. resources
- Identify opportunities and constraints for RE development
- **COMPLETED**

Mapping & Reporting Tool (INR)

- Develop interactive mapping and reporting tool
- Engage with stakeholders to inform and test functionality and reporting features
- **Status: Convening Focus Groups Meetings; Beta process in winter**

Military Needs & Interests Assessment (ODOE / DLCD / ESS)

- Assess interaction of current and future military activity and RE development
- **COMPLETED**

Siting Procedures Review (ODOE / DLCD)

- Review and analysis of siting regulations, permitting, and project review processes
- **FINAL REPORT DRAFTING**

Project Deliverables

ORESA Report &
ORESA Mapping &
Reporting Tool

Spring 2022

ORESA Project: 5 Components

1

Renewable Energy Market & Industry Assessment (Led by ODOE and supported by Consulting Firm – E3: Energy and Environmental Economics)

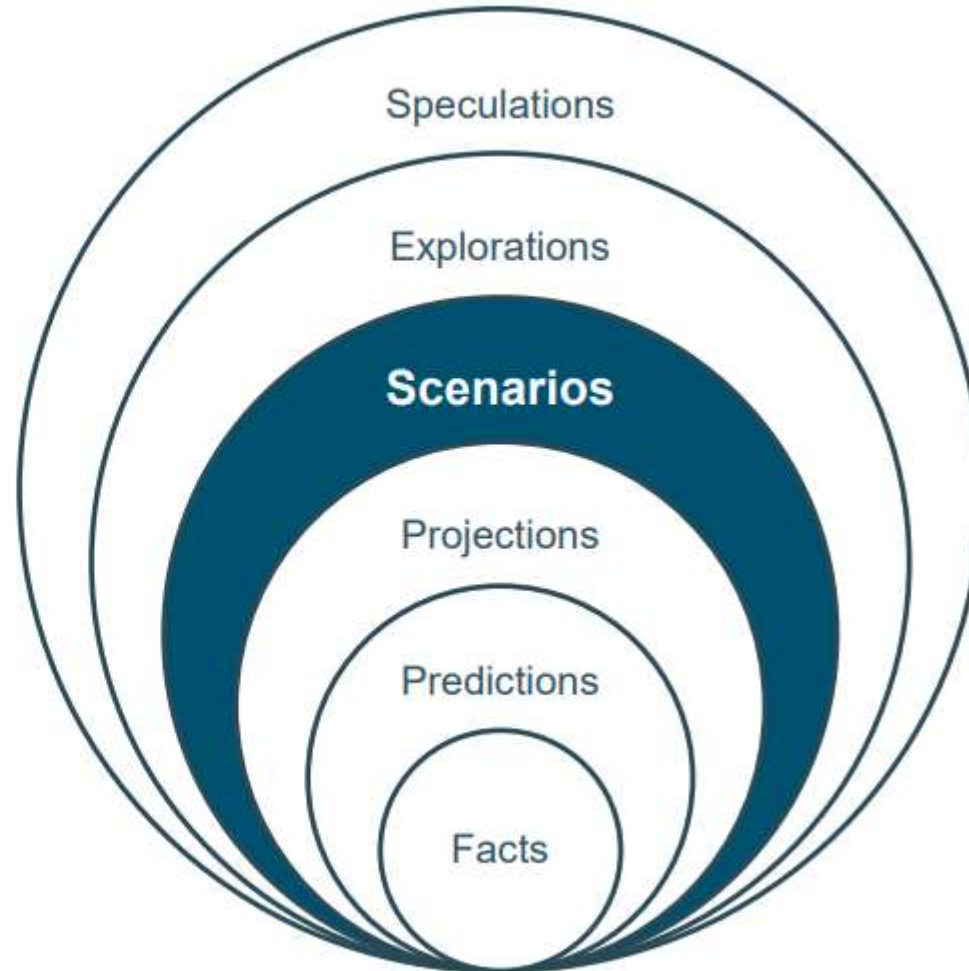
- Collect data and model the future opportunity for development of renewable energy generation and transmission infrastructure in Oregon.
- Develop build-out scenarios for Oregon over the next 15 years.
- Explore the challenges and opportunities that exist in the renewable development community in Oregon and identify gaps that could be addressed for Oregon to meet its long-term energy goals.

STATUS

- E3 webinar recordings available on [ORESA website](#)
- Final report completed, ORESA synthesizing findings

ORESA Project: 5 Components

- + This study uses scenario analysis to identify and analyze plausible outcomes for renewable development within the state of Oregon over the next fifteen years
- + Goal of scenario analysis is not to predict an outcome—but to highlight key drivers of and differences between scenarios to inform future decision making



ORESA Project: 5 Components

2

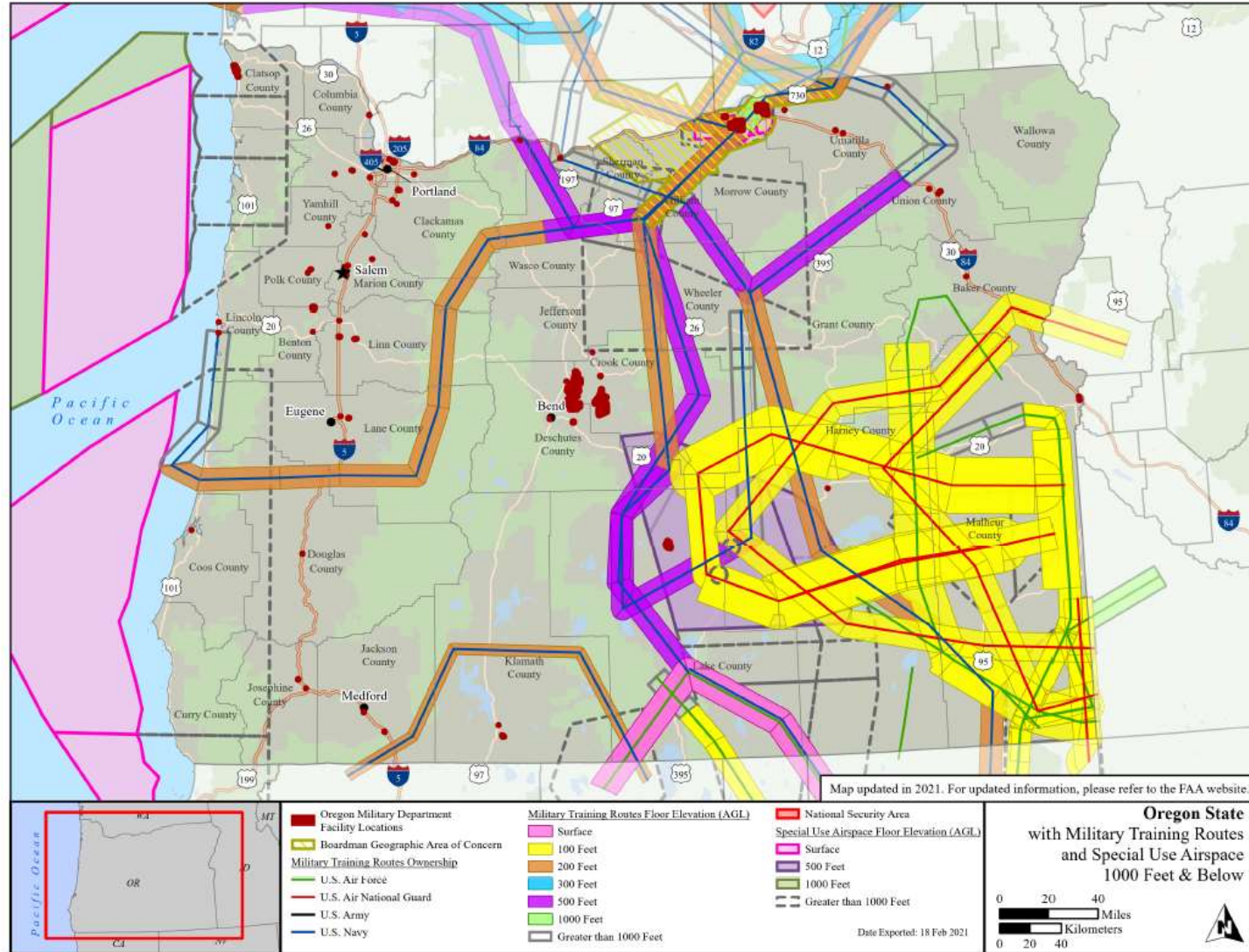
Military Needs & Interests Assessment (Co-led by ODOE and DLCD and supported by Consulting Firm – Epsilon System Solutions (ESS))

- Collect data and information about current and future military assets, uses, needs, and lessons learned regarding coordination.
- Analyze data, protocols, and policies regarding military training and operating areas.
- Note any constraints and opportunities between renewable energy development and military uses.

STATUS

- ESS research and feedback from Military entities complete
- Final report completed, ORESA synthesizing findings

ORESA Project: 5 Components



ORESA Project: 5 Components

3

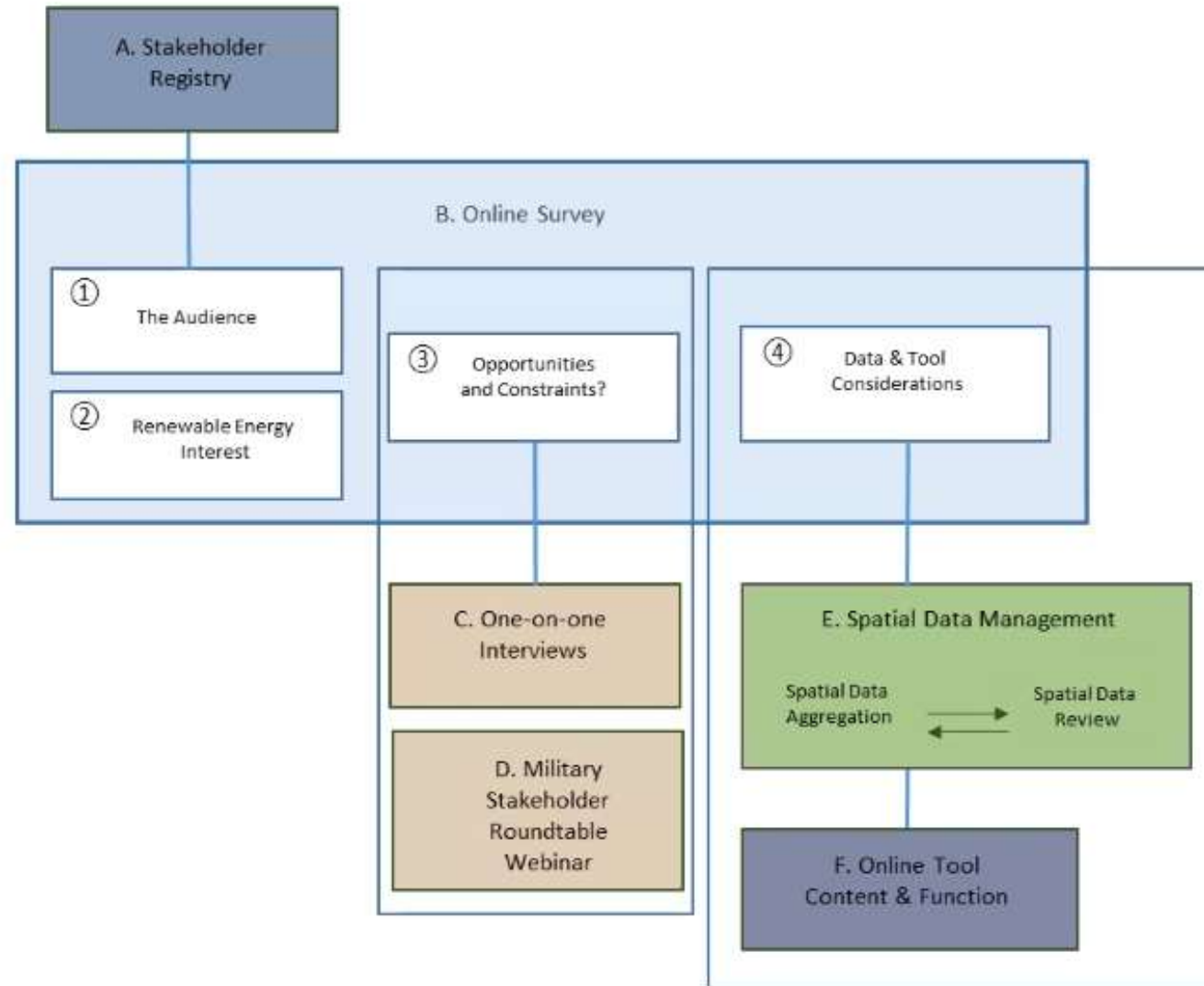
Natural Resources, Environment, and Development: Opportunities & Constraints Assessment (Led by DLCD and supported by Consulting Firm Conservation Biology Institute (CBI))

- Assess renewable energy development as relevant to natural resources, jurisdictional review and protections, community and economic development, and interests in the natural and built environment.
- Assess opportunities and constraints across sectors, including regulatory structures, industry needs and best practices, and community interests

STATUS

- CBI hosted [webinar series](#) and recordings available [online](#)
- Final report completed, ORESA synthesizing findings

ORESA Project: 5 Components



ORESA Project: 5 Components

4

Siting Procedures Review (co-led by ODOE and DLCD)

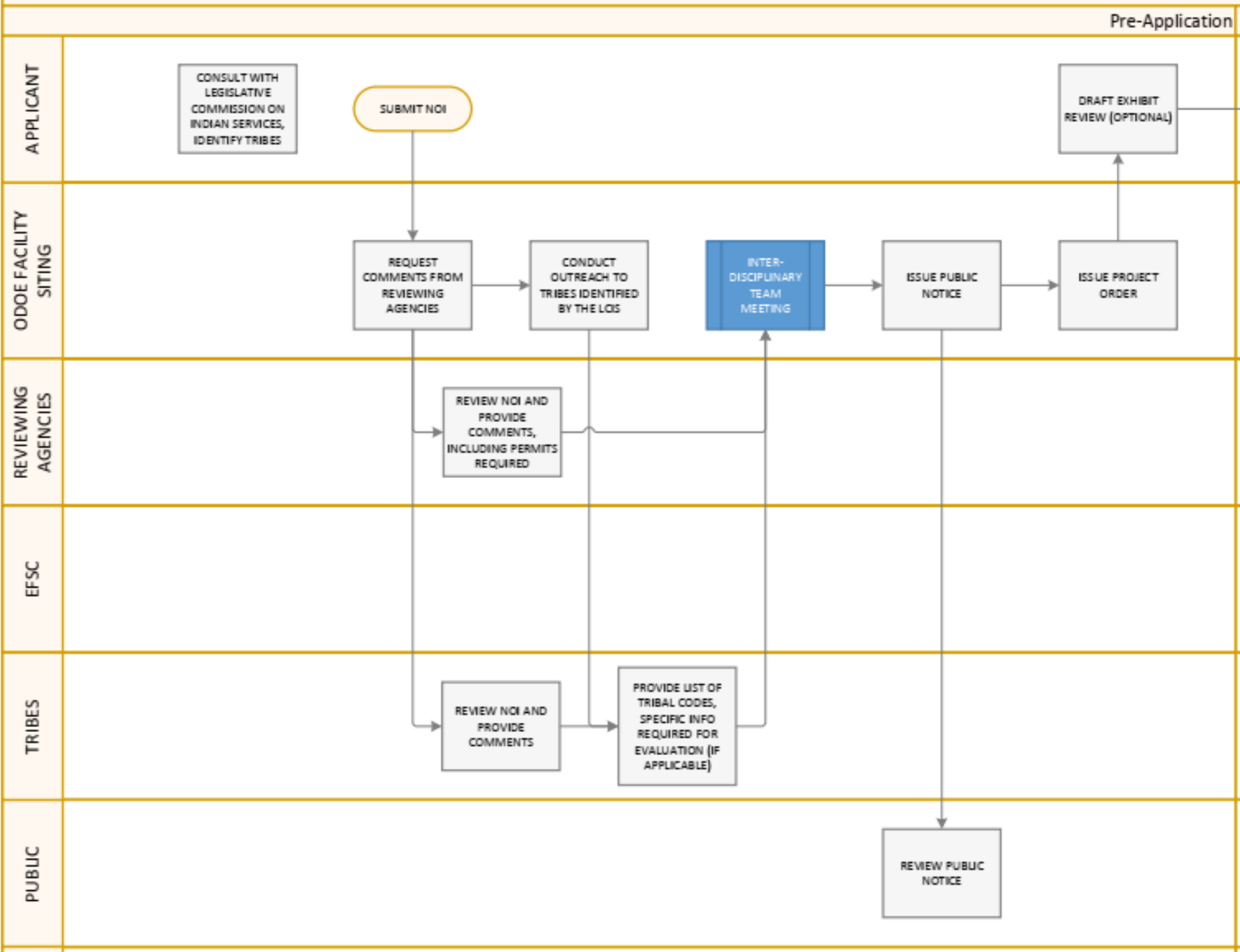
- Review and analysis of siting regulations, permitting, and project review processes as they relate to notification, identification, and evaluation of potential impacts.
- Develop summary of siting regulations and process review with feedback from stakeholders.
- Identify best practices in tools and strategies for engagement and improved coordination.

STATUS

- Research and external feedback received for accuracy check
- Report and diagrams in final editing stages

4

Siting Procedures Review (co- led by ODOE and DLCD)



ORESA Project: 5 Components

5

Mapping and Reporting Tool (led by Institute for Natural Resources)

- Housed on [Oregon Explorer](#) with data related to renewable energy; military; economic development; land use considerations; natural resources; and other regulatory or process considerations.
- Development involving stakeholders to help define use cases, data exploration needs and reporting functionality.
- The tool should build a more comprehensive understanding of renewable energy and support proactive coordination in the state.

STATUS

- INR coordinated data transfer across the three assessments and procedures report
- Convening focus and user groups to inform tool development and beta testing

5

Mapping and Reporting Tool (led by INR)

Summary of mapping and reporting tool

Oregon Renewable Energy Siting Assessment
ORESA Mapping and Reporting Tool



Potential Use Cases
 A **developer** is looking for possible sites for renewable energy development in Oregon that will be economically viable and have a high likelihood of success for approval. The ability to quickly assess many data layers and receive a simple summary of the anticipated environmental, cultural and military considerations at the specified site(s) will assist their planning activities. If a developer decides to proceed with a specific site, the Tool will enable notification and coordination with the appropriate Military contacts, as well as contact information for other interested parties.


Primary users of the tool include renewable energy developers, land use authorities, planners and policy makers at all levels (local, state, tribal and federal)

ORESA Tool Objectives

- Facilitate easy access to data and information to support new renewable energy developments in Oregon with consideration given to military training and operational area compatibilities, economic and community benefits, current land use policies and plans, cultural and environmental resource assets, and state and local regulatory requirements.
- Promote and establish a framework for early notification and ongoing coordination and communications on potential development projects with the Military and other agencies.
- Make accessible a transparent, consistent collection of trusted, accurate data and information, without recommendations or endorsements, and note where information may be imprecise or uncertain.

A county planning department receives an application for a large utility scale renewable energy facility filed under the provisions of ORS 215.446 (HB 2329). Access to the Tool assists the planners to let them know with whom to communicate and coordinate and prepare a thorough staff report that better answer questions that might come from the planning commission or elected officials during the public hearing process.

Project Contacts and Information
 ORESA Project Coordinator: Kaci Radcliffe, ODOE (kaci.radcliffe@oregon.gov)
 Oregon Explorer Contacts: Janine Salwasser, INR (janine.salwasser@oregonstate.edu) or Myrica McCune, INR (myrica.mccune@oregonstate.edu)
 Revised April 13, 2021



The tool will be housed on the [Oregon Explorer](#), and maintained by the Institute for Natural Resources (INR) and the Oregon State University Libraries & Press

ORESA Mapping & Reporting Tool Functionality
 Users will be involved in the development of the ORESA tool. Anticipated functionality includes, but is not limited to:


- Ability to filter and query data layers, measure areas and distances, view metadata, download data, add external map services, upload local data, and create maps
- Identification of restricted areas as well as sites with additional considerations and trade-offs
- Inclusion of military contact information for notification and coordination in applicable locations
- Creation of a Renewable Energy Site Report for an area of interest with additional context and maps in pdf format

Tool Timeline

- Fall 2019 Project Begins**
 Scoping, Cross Assessment Coordination, Stakeholder Engagement & Data Gathering
- Spring 2021 Data Collection Complete**
 Tool Development & User Group Meetings
- Summer 2021 Beta Tool Ready for Testing**
 Beta Testing with Users & Tool Improvements
- Winter 2021 Tool Launch on the Oregon Explorer**

www.oregonexplorer.info

Oregon Renewable Energy Siting Assessment (ORESA) Project Partners



Funded by a grant from the Department of Defense Office of Economic Adjustment (OEA)

Mapping & Reporting Tool

Watch recorded demo of the tool at the ORESA project website: <https://www.oregon.gov/energy/energy-oregon/Pages/ORESAspx>

Resources

- Mapping and Reporting Tool, Summary and Use Cases: <https://www.oregon.gov/energy/energy-oregon/Documents/2021-04-ORESA-Mapping-Tool-Two-Pager.pdf>
- Project Update, August 2021: <https://www.oregon.gov/energy/energy-oregon/Documents/2021-ORESA-Project-Summer-Update.pdf>
- Stakeholder Engagement recordings and presentations: <https://www.oregon.gov/energy/energy-oregon/Pages/ORESA.aspx#Stakeholders>

Stay in touch!

Learn more about the ORESA project:

<https://www.oregon.gov/energy/energy-oregon/Pages/ORESAspx>

Sign up for email updates:

<http://web.energy.oregon.gov/cn/a6n53/subscribe>



OREGON
DEPARTMENT OF
ENERGY



INSTITUTE
FOR
NATURAL
RESOURCES



NAS WHIDBEY ISLAND



OREGON

Department of
Land Conservation
& Development