



PUBLIC PURPOSE CHARGE (SB 1149) SCHOOLS PROGRAM

SCHOOL PROJECTS MAP USER GUIDE



by the
**OREGON
DEPARTMENT OF
ENERGY**

April 2025

SB 1149 in Action: HVAC and Heat Pump at Ladd Acres Elementary in Hillsboro, OR



FOR MORE INFORMATION

Please contact Oregon Department of Energy Schools Program Staff with any questions:

The Oregon Department of Energy

550 NE Capitol Street NE

Salem, OR 97301

503-378-4040 | 800-221-8035

Program email: Sb1149.sch@energy.oregon.gov

General email: askenergy@oregon.gov

www.oregon.gov/energy



Cover images -

Top: Heat pump at W.L. Henry Elementary in the Hillsboro School District and bottom: Upgraded football field lighting at Estacada High School.

BACKGROUND AND PURPOSE

Senate Bill 1149

Senate Bill 1149 directed Oregon's two largest utilities, Portland General Electric and Pacific Power, to collect a "public purpose charge" from their customers.

The charge collected is equal to 1.5 percent of the total revenues from electricity services. Twenty percent of those funds collected go to school districts with public schools in PGE and Pacific Power service areas. Eligible schools can complete energy or fleet audits and implement eligible energy efficient measures. Energy efficiency measures can include new windows, upgraded heating and cooling systems, upgraded controls for heating and cooling systems, building envelope improvements, energy efficient lighting, domestic hot water systems, and more. Districts are also eligible to purchase zero emissions vehicles or electric vehicle chargers.

Interactive Map

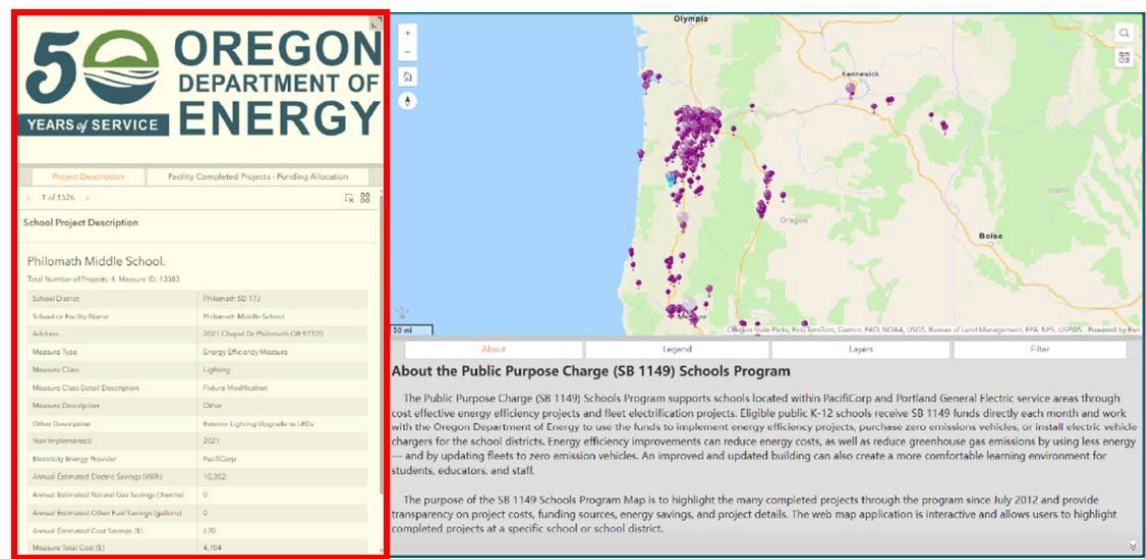
The interactive map shows completed school projects funded with Public Purpose Charge funds from July 2012 through June 2023. The map provides transparency on project costs, funding sources, energy savings, and project details. The web map application is interactive and allows users to highlight completed projects based on a number of filtering options such as projects at a specific school or school district.

In this document, readers will learn how to navigate the interactive map using screenshots and wayfinding instructions.

SB 1149 in Action: Heat pump at Farmington View Elementary School in the Hillsboro School District

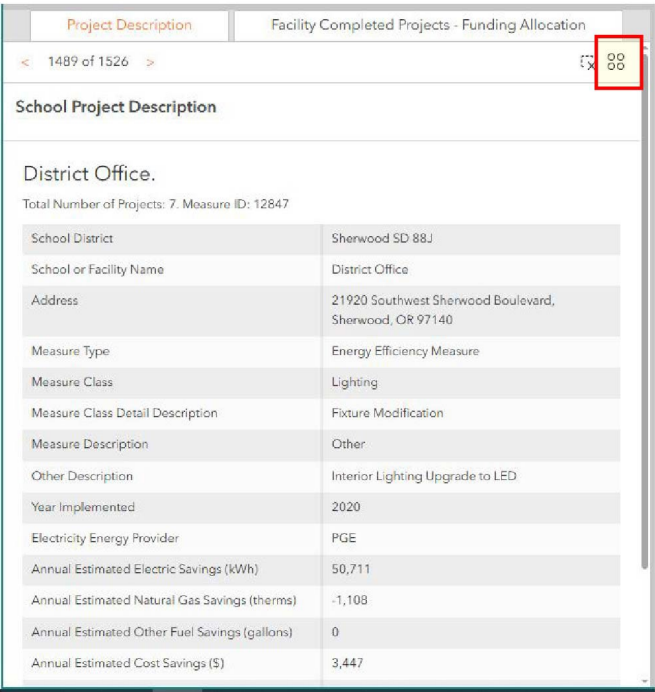


LEFT PROJECT PANE

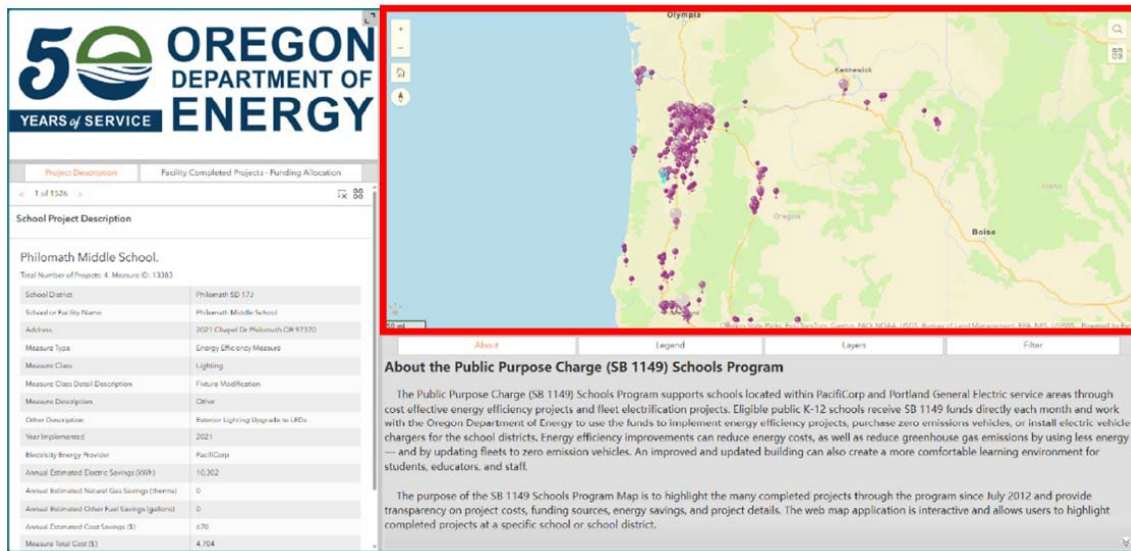


Located on the left, the project pane provides information on completed projects and funding allocations for schools. This pane will change based on the user's map selections or filters.

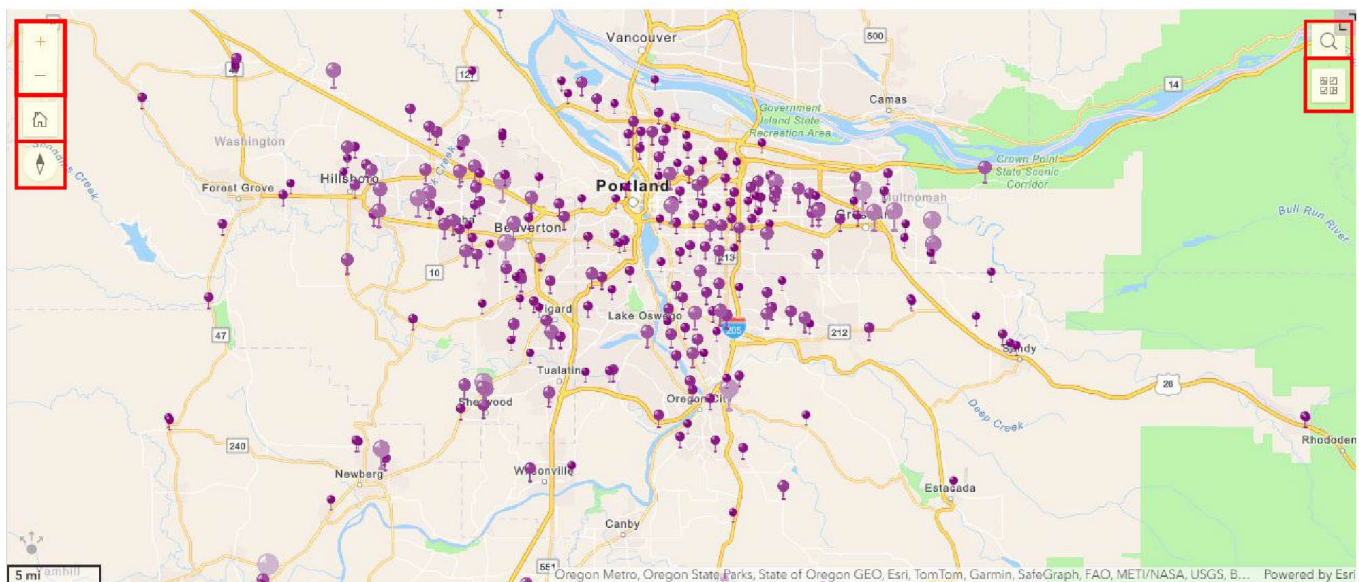
💡 To export data, click the icon with four circles on the right side of the project pane. This will export the current project data reflected in the “School Project Description” page or the filtered dataset.



MAP PANE



Located on the top right, the map is interactive and allows the user to pan and zoom to an area of choice. To select a school, simply click the location on the map.



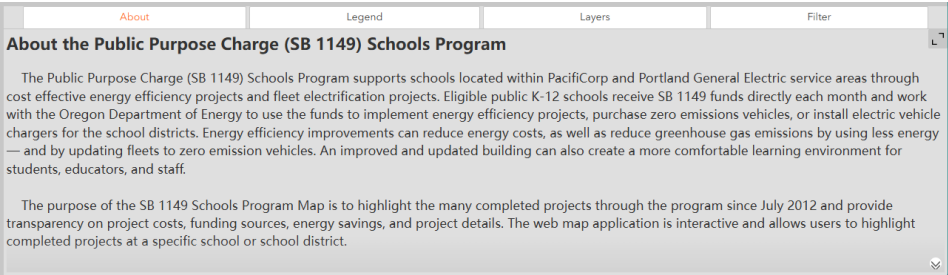
- To zoom in, use your mouse or trackpad or click the plus sign in the top left corner of the map.
- To reset the map, click the house icon in the top left corner of the map.
- To reorient your map northward (if you pan in a different direction) click the north arrow in the top left corner of the map.
- To search for an address or location, click the magnifying glass icon in the top right corner of the map.
- To change your basemap to topographic, satellite imagery, etc., click the icon made of four squares in the top right corner of the map.

BOTTOM INFORMATION PANE

Located under the map pane, the bottom pane contains four tabs: About, Legend, Layer, and Filter.

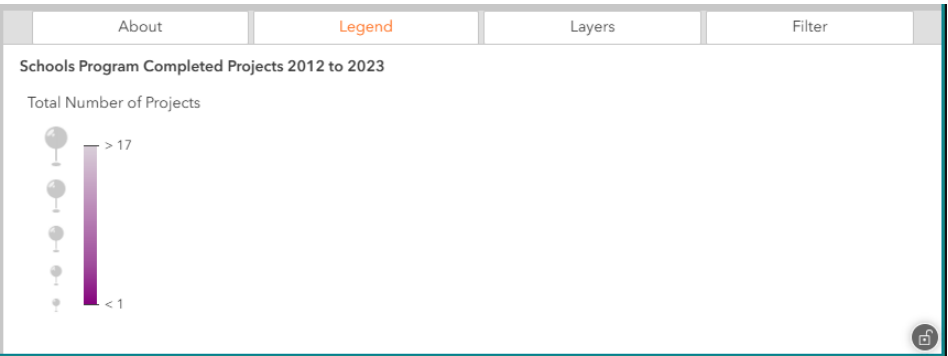
About

The About tab contains general information about the Public Purpose Charge (SB 1149) Schools Program, an application overview, data sources, contact information, and disclaimer. It is the default tab.



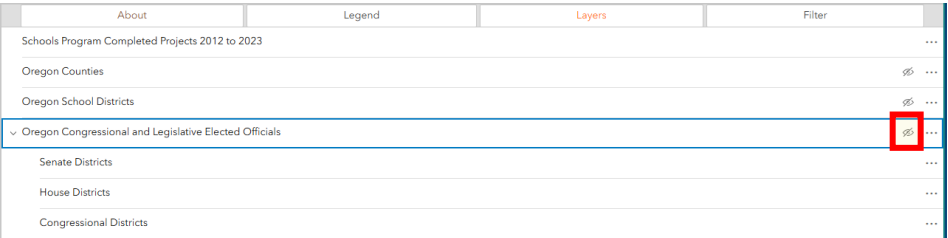
Legend

The Legend tab offers a key to interpret the active layers on the map. Schools are shown by the number of completed projects. A large pin icon in a lighter color indicates a high number of completed projects. A small point with a darker shade indicates a lower number of completed projects.



Layer

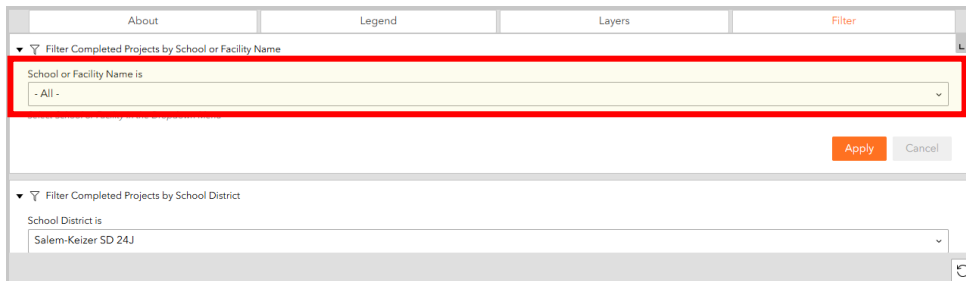
The Layers tab allows you to add or remove different boundaries such as Oregon Counties, Oregon School Districts, or Oregon political boundaries (State House, State Senate, and Congressional districts).



💡 Use the eye icon on the right side of the row to turn on or off each layer.

Filter

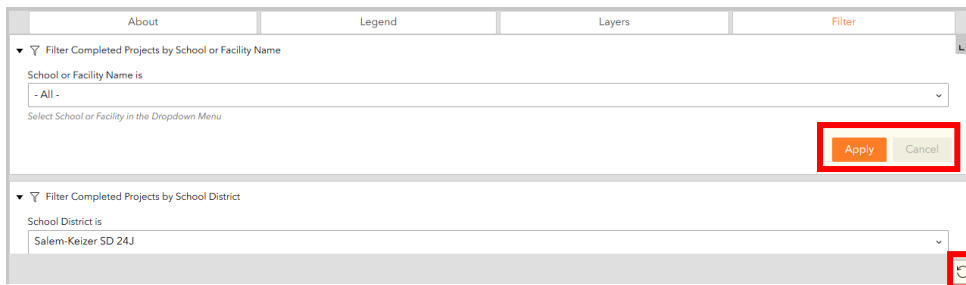
The Filter tab allows you to manipulate which Schools Program Completed Projects are included in the map. You can use one or many filters for a given project depending on what you want to see.



💡 Each filter has a dropdown menu. Use the dropdown menus to select filters. Then, hit apply.

Filter Examples:

- Projects at a school or school district.
- Projects based on the measure type (Energy Efficiency Measure, Fleet Measure or Operations and Maintenance Measure) or the measure class (Building Envelope, Controls, Heating, Lighting and more)
- Projects by political boundaries.



- 💡 Click the “Cancel” button to remove a filter.
- 💡 To reset the filters, click the “Reset” button in the bottom right of the Filter tab.
- 💡 The filter settings will update the Map Pane and Left Project Pane to reflect the changes.

SB 1149 in Action: Classroom lighting upgrades at Oliver Middle School in the Centennial School District

