

Oregon Department of **ENERGY**

Sunrise Solar and Battery
Storage Projects

Notice of Intent
Informational Meeting

April 24, 2025
Port of Morrow
Riverfront Room
Boardman, OR



5:30 PM - Meet and Greet and
1:1 conversations with ODOE
and Applicant

6:00 PM – Presentations then
Q&A/Comment

AGENDA

- Introductions (ODOE)
- Public Meeting Overview (ODOE)
- EFSC Siting Process Overview (ODOE)
- Proposed Facility Overview (Applicant)
- Q&A Session – Comment (Public)

Notice of Intent to Apply for a Site Certificate

**Sunrise Solar and Storage Projects
February 2025**

**Submitted to
Oregon Energy Facility Siting Council**

**by
PacifiCorp**

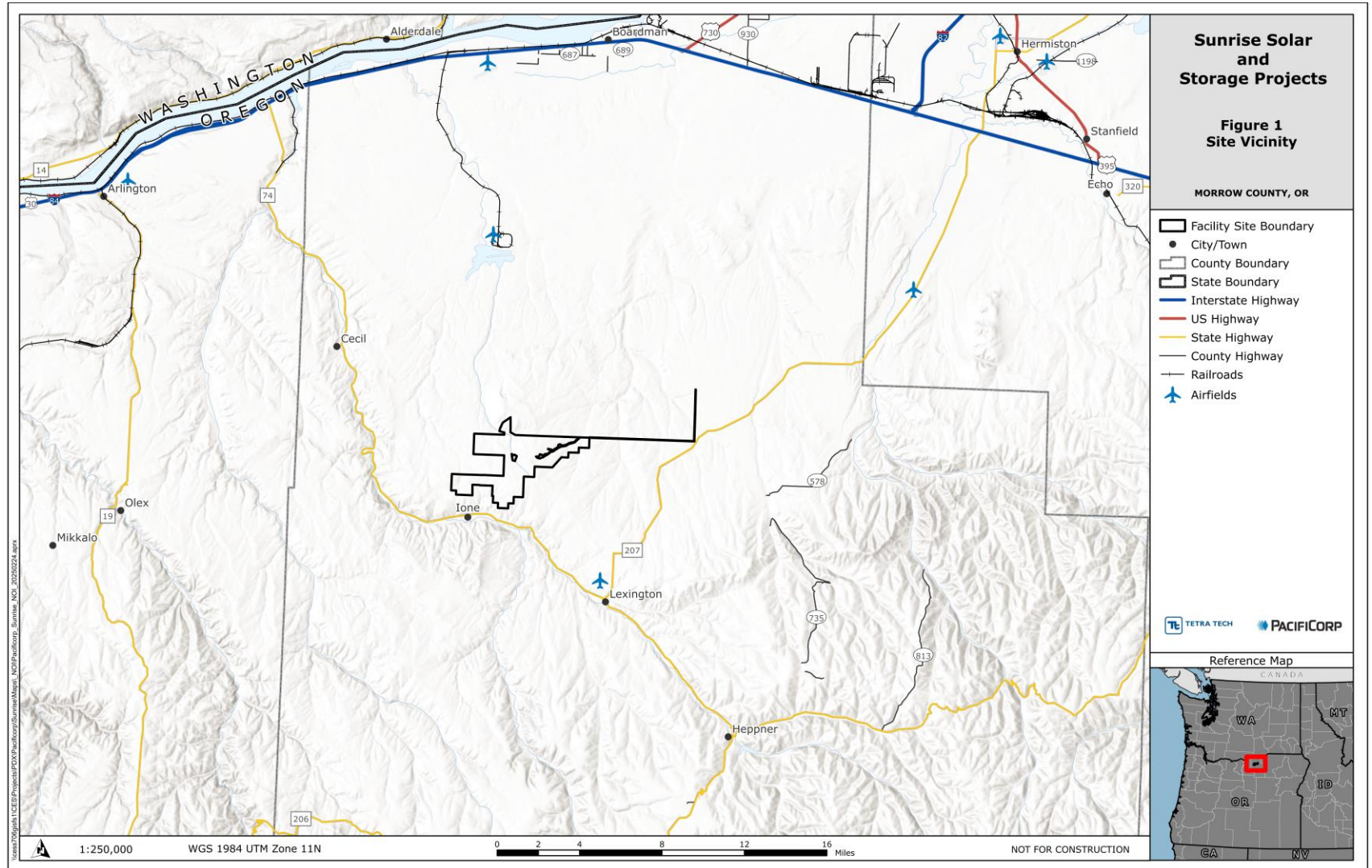


Prepared by



Proposed Facility

Site boundary of 6,981-acre (10.9 square miles) of privately owned Exclusive Farm Use zoned land entirely within Morrow County. Approximately 1 mile northeast of Ione.



Proposed Facility

Energy Facility

- Solar Modules/arrays (800 MW capacity)
- Posts and Trackers
- 34.5 kilovolt (kV) Collector System
- Inverters/Transformers

Related or Supporting Facilities

- Battery Energy Storage System – up to 800 MW capacity
- 34.5 to 230 kV Step-Up Collector Substation
- 230 kV-500 kV generation-tie line(s)
- Operations and Maintenance Building
- Access and service roads
- Perimeter fencing and gates
- Temporary construction areas

Meeting Overview

This informational meeting:

- Is intended to give members of the public an opportunity to learn about the proposal and provide comment on the NOI.
- Is **not** a contested case hearing, and participation in the meeting is not required to preserve issues or standing for the contested case.

Please hold all questions and comments until the Q&A session at end of the presentations. Commenters will be subject to time limits in order to allow all who want to comment, to make comments tonight.

Any person engaging disruptive behavior may be asked or required to leave the meeting.

Oregon's Energy Facility Siting Program

Who We Are

Oversees review, decision-making, and compliance for most large-scale energy-generating facilities and infrastructure in Oregon.

- Energy Facility Siting Council (EFSC) is decision-making authority.
- Oregon Department of Energy (ODOE), Siting Division serves as staff to EFSC.

What We Do

Consolidated process between state agencies and local government:

- Eliminates duplication, consolidates timelines, decisions, and judicial review
- Reviews proposal for compliance with applicable standards, laws, and rules.
- Provides opportunities for public participation and comment.
- Coordinates review and solicits input from reviewing agencies, local governments, and tribal governments.

State Jurisdictional “Energy Facilities” ORS 469.300(11)(a)(D)

A solar photovoltaic power generation facility using more than:

- (i) 240 acres located on high-value farmland as defined in ORS 195.300;
- (ii) 2,560 acres located on land that is predominantly cultivated or that, if not cultivated, is predominantly composed of soils that are in capability classes I to IV, as specified by the National Cooperative Soil Survey operated by the National Resources Conservation Service of the United States Department of Agriculture; or
- (iii) 3,840 acres located on any other land.



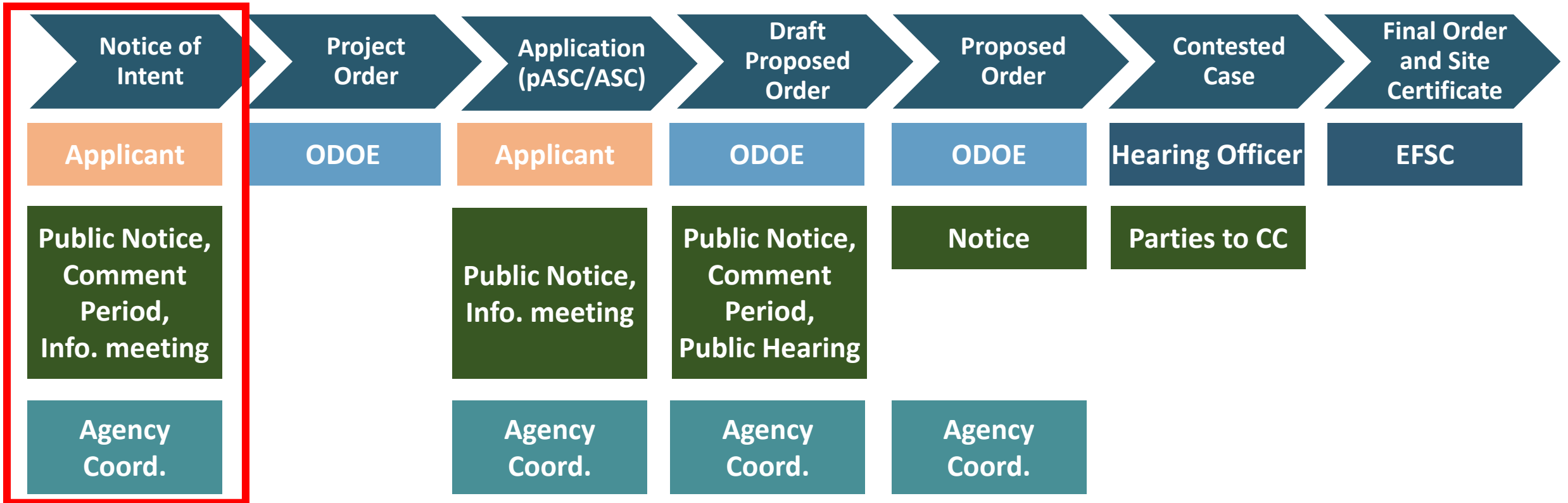
Energy Facility Siting Process

Applicable EFSC Siting Standards:

- **General Standard of Review**
- **Organizational Expertise**
- **Structural Standard**
- **Soil Protection**
- **Land Use**
- **Protected Areas**
- **Retirement and Financial Assurance**
- **Fish and Wildlife Habitat**
- **Threatened and Endangered Species**
- **Scenic Resources**
- **Historic, Cultural and Archaeological Resources**
- **Recreation**
- **Public Services**
- **Waste Minimization**
- **Wildfire Prevention and Risk Mitigation**
- **Noise**
- **Siting Standards for Transmission Lines**

ENERGY FACILITY SITING PROCESS

Application for Site Certificate Process

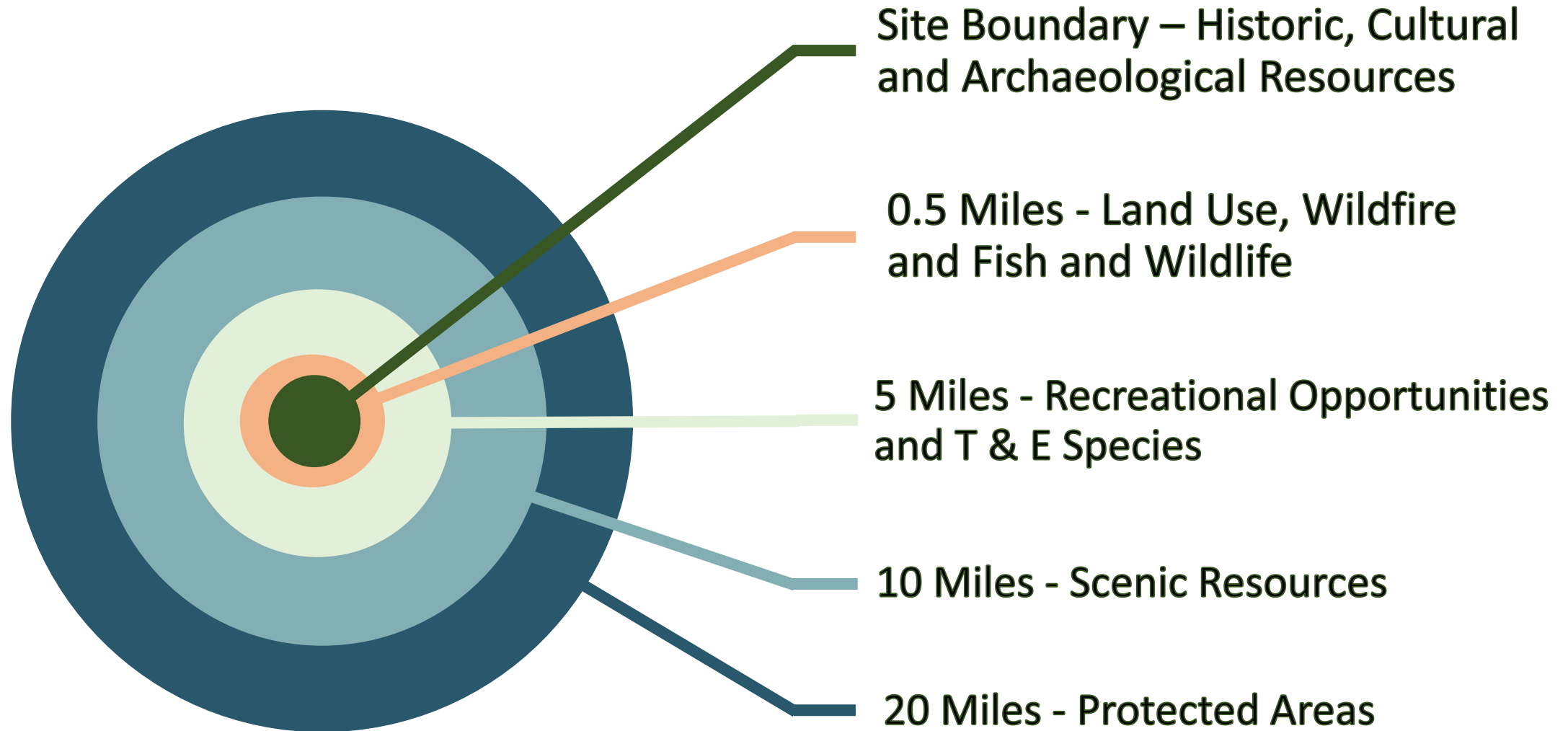


WE ARE HERE

Proposed Facility

- The proposed facility qualifies as an “energy facility” under ORS 469.300(11)(a)(D), and the applicant must obtain a Site Certificate from the Oregon Energy Facility Siting Council (EFSC or Council) before it may construct or operate of the proposed facility.
- To obtain a site certificate the applicant must demonstrate that the proposed facility meets the standards established by the Council in OAR chapter 345, other applicable Oregon statutes, rules and standards, and Oregon’s land use planning goals.
- ODOE serves as staff to the Council and conducts much of the application review process. Submitting the NOI is the first step in the process of obtaining a site certificate.

NOI Study Area Distances



Reviewing Agency Coordination

Reviewing Agencies and Special Advisory Groups:

- Provide comments on the proposed facility within the jurisdiction or expertise of the agency
- Make recommendations regarding the size and location of analysis area(s)
- Identify:
 - Studies that should be conducted to identify potential impacts
 - Statutes, administrative rules, applicable substantive criteria, and local government ordinances administered by the agency
 - Permits administered by the agency that might apply to construction or operation of the proposed facility

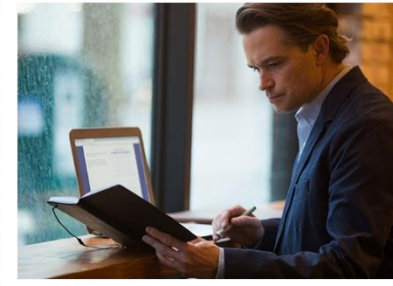
Land Use

- The applicant may choose to obtain land use approval from EFSC or from the affected local governments.
- NOI indicates applicant intends to seek land use determination from EFSC
- If election changes, interested persons should participate in the local land use process.

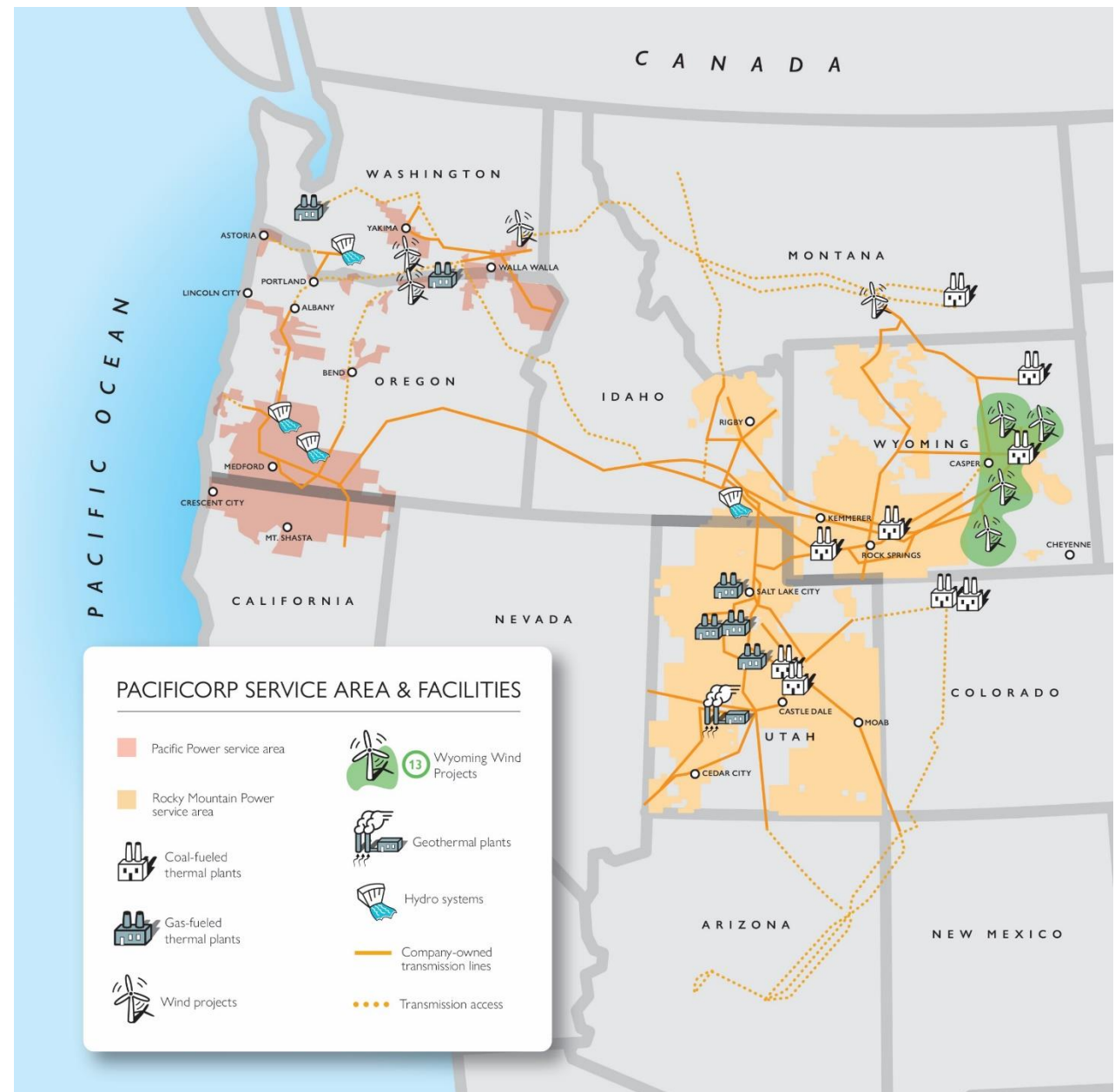
Examples of Common Issues Related to Council Standards

- **Impacts to Agriculture and Goal 3 Exception Required for Approval**
 - Relates to Land Use Standard
- **Wildlife Habitat Impacts and Mitigation Measures/Habitat Mitigation Areas**
 - Relates to Fish and Wildlife Habitat Standard
- **T&E Species and Avoidance Measures**
 - Relates to Threatened and Endangered Species Standard
- **Wildfire Risk and Prevention – Battery Storage Systems**
 - Relates to Wildfire Standard, Land Use Standard, Public Services Standard
- **Visual Noise or or Access Impacts to important places**
 - Relates to Protected Area Standard, Scenic Resources Standard and Recreational Standard

Sunrise Solar + Storage Projects



- Largest grid operator in the Western U.S.
- Six-state service territory:
 - Oregon
 - Washington
 - California
 - Utah
 - Idaho
 - Wyoming





2 million customers



5,300 employees



141,503 territory sq miles



17,500 miles transmission lines
65,000 miles distribution lines



11,000 MW owned generation
capacity



PacifiCorp owns and operates 3,300 MW of renewable and noncarbon capacity. Example wind and solar projects throughout the West:

Oregon

- Solar – Black Cap Solar
- Wind – Leaning Juniper

Wyoming

- Wind – Cedar Springs II; Dunlap Ranch; Ekola Flats; Foote Creek I, II, IV; Glenrock; High Plains; McFadden Ridge; Rolling Hills; Seven Mile Hill; TB Flats

Washington

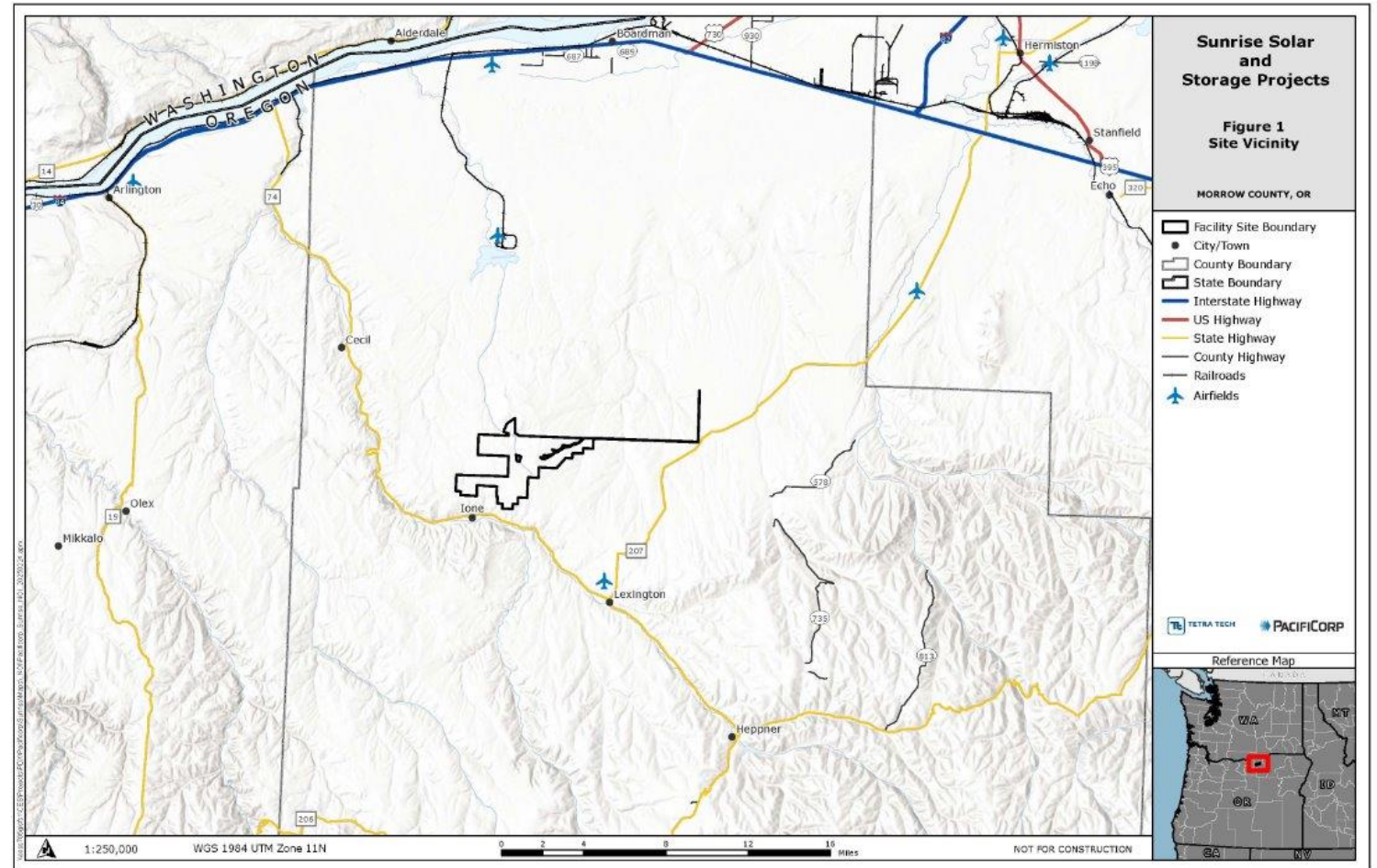
- Wind – Goodnoe Hills, Marengo I & II

Montana

- Wind – Pryor Mountain

Sunrise Solar + Energy Storage

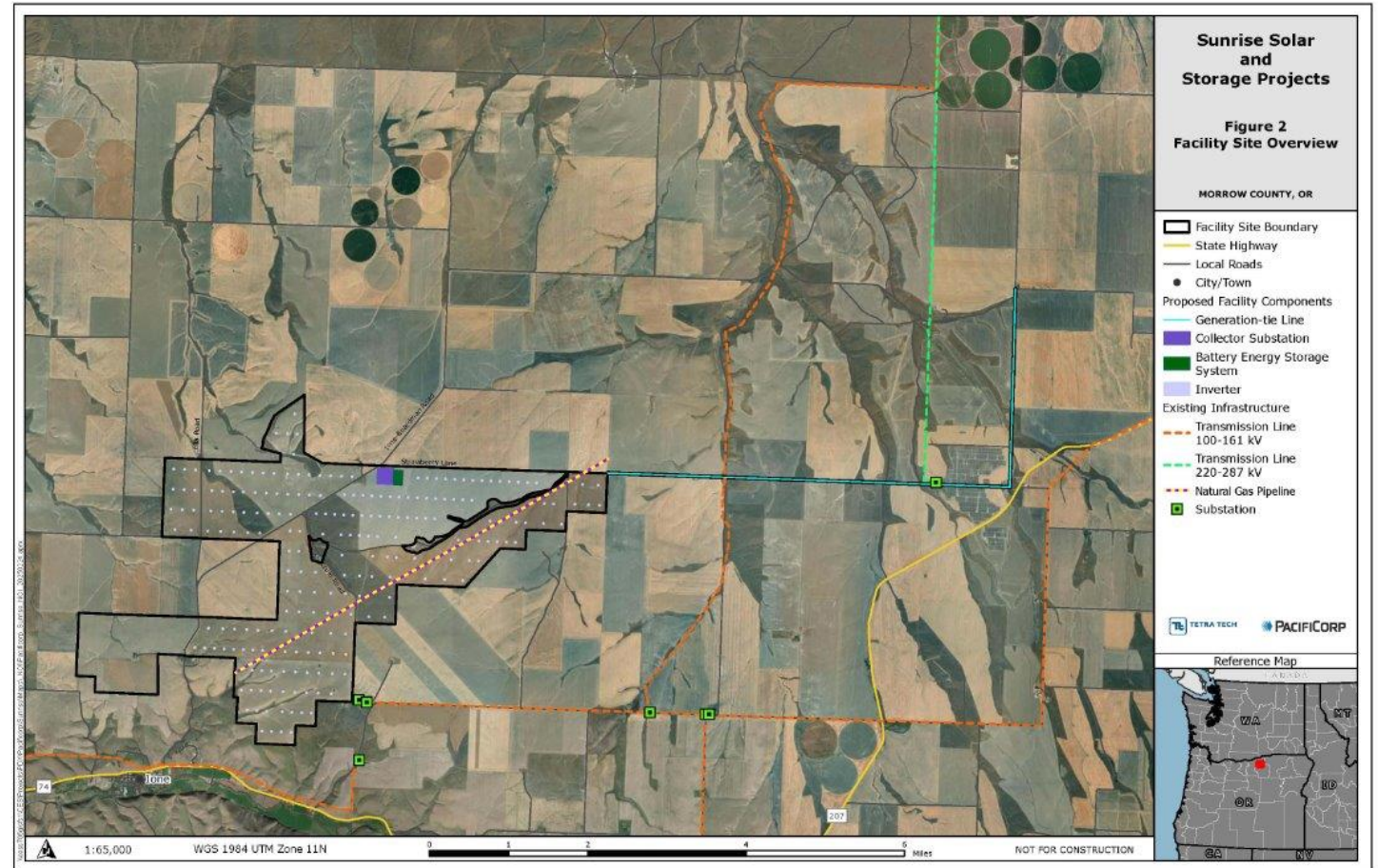
- Approximately 7,000 contiguous acres
- Privately owned land northeast of Ione, OR
- Preliminary layout: 800 MW of solar paired with energy storage
- Interconnection to future area transmission
- Dryland crop use for decades
- Employs an average of 200 people for construction and 10 to 20 people during operation



Sunrise Solar + Energy Storage

Related or supporting facilities will consist of:

- Battery energy storage system
- Collector substation
- Operations and maintenance building
- Generation-tie transmission line
- Site access and service roads
- Perimeter fencing and gates
- Temporary construction areas



Future Surveys and Studies Overview

- Cultural resources
- Agricultural sector and socioeconomic impacts
- Scenic resources; glint / glare analysis
- Emergency services coordination plan
- General wildlife and habitat, rare plants, raptor nests
- Noxious and invasive weeds and mitigation
- Traffic impact
- Soils and geotechnical investigations
- Wetlands and waters

* Informed by input from various agencies including CTUIR, Morrow County, ODFW, DOD, OR Dept of Ag

Ongoing and Future Engagement

- Tribes
- Morrow County
- Federal
 - U.S. Fish and Wildlife Service (USFWS)
 - U.S. Army Corps of Engineers (USACE)
 - U.S. Department of Defense (USDOD)
- State
 - Department of Energy (ODOE)
 - Energy Facility Siting Council (EFSC)
 - Department of Fish & Wildlife (ODFW)
 - Department of State Lands (ODSL)
 - Department of Agriculture (ODA)
 - Department of Aviation
 - Oregon Land Conservation and Development Commission (LCDC)
 - State Historic Preservation Office (SHPO)
 - Department of Environmental Quality (ODEQ)
 - Department of Geology and Mineral Industries (DOGAMI)

Important Topics

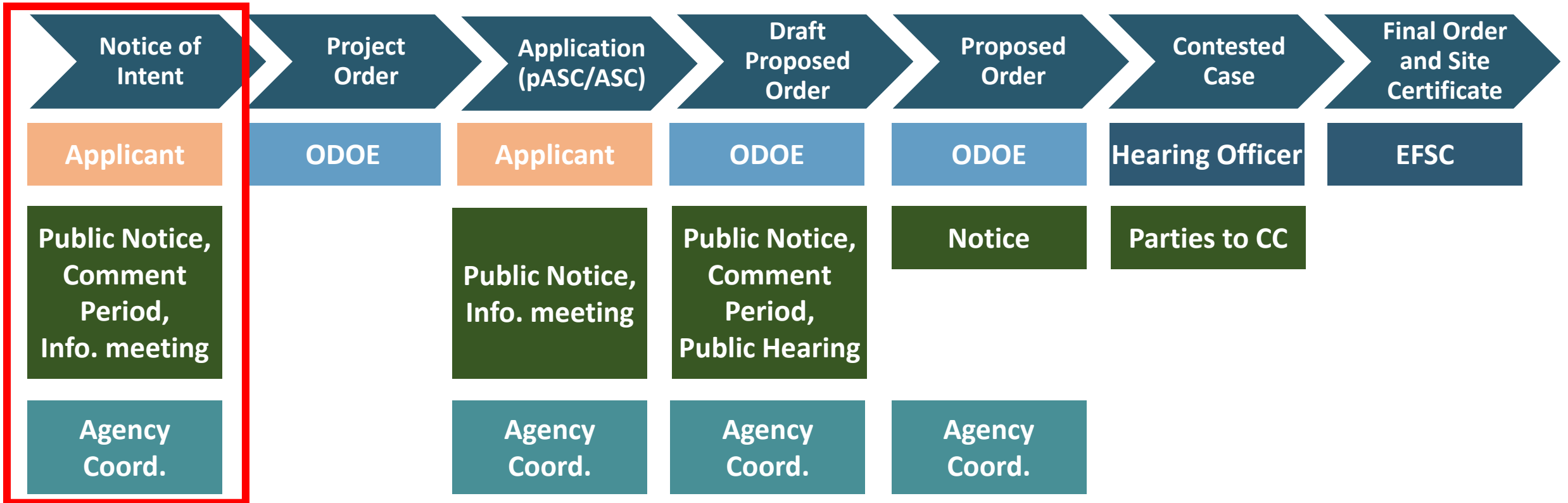
- Coordination with Morrow County, Cities of Ione, Heppner, Boardman, Town of Lexington
- Stakeholder engagement
- Socioeconomic impacts
- Agricultural sector impacts
- Economic support, development and employment
- Ongoing maintenance
- Fire and emergency response
- Weed control and erosion
- Environmental considerations

Preliminary Milestones

- Completion of field surveys and reporting
- Conceptual design(s) taking into account
 - Constraints identified in the surveys, neighbor discussions and EFSC process
 - Soils, drainage, erosion
 - Optimized access
 - Optimized design for operations and production
- Submit Application for Site Certificate (ASC) - submittal timing determined by factors including
 - PacifiCorp resource addition and interconnection timeframes
 - Completion of area transmission upgrades
- Construction of the project may occur in phases; for example, 800 MW divided into 4 x 200 MW

ENERGY FACILITY SITING PROCESS

Application for Site Certificate Process

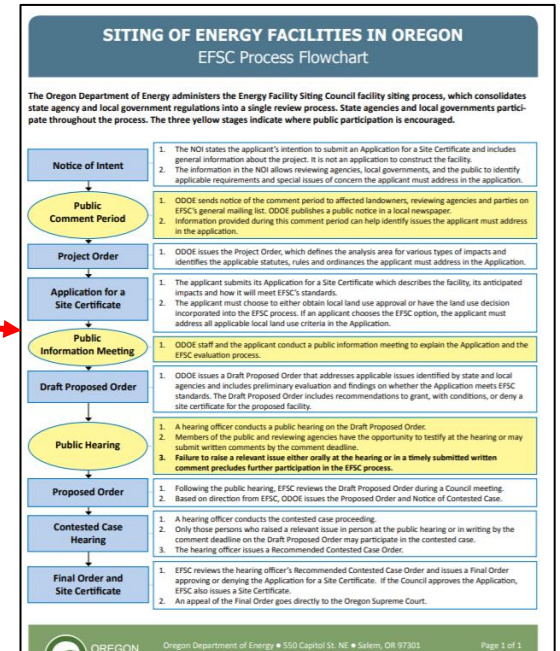
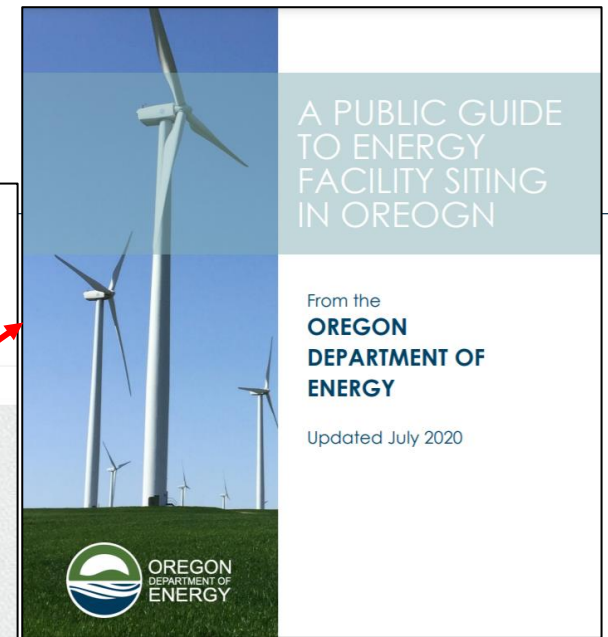


WE ARE HERE

Helpful Resources

Oregon Department of Energy / Energy Facilities & Safety / Facilities

Energy Facility Siting



Home > Siting Public Comment

Siting Public Comment

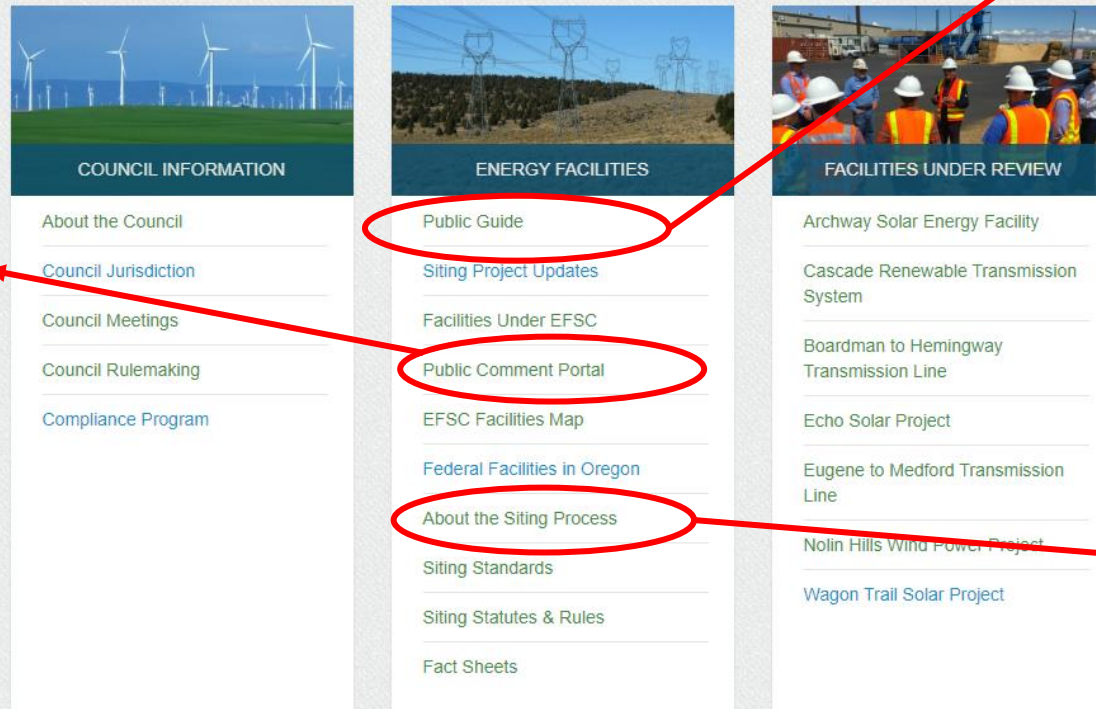
* Required Field

Project Selection

Project *

Please select the project that you are interested in commenting on

Next



<https://www.oregon.gov/energy/facilities-safety/Pages/default.aspx>

<https://www.oregon.gov/energy/facilities-safety/facilities/Pages/SSS.aspx>

<https://odoe.powerappsportals.us/en-US/SitingPublicComment/>

ODOE Comment Portal

Go to: <https://odoe.powerappsportals.us/en-US/SitingPublicComment/>

Select: “**Sunrise Solar and Storage Projects**” from dropdown menu

Follow: Prompts to create a comment

Create: Enter your comments – 25 MB limit on attachments

Submit: Your comments

You will receive an email confirmation of your submittal

Reminder: Public Comment Closes on **May 23, 2025** at 5:00 PM Pacific Time

ODOE Contact

Kathleen Sloan, Senior Siting Analyst
Oregon Department of Energy
550 Capitol St. NE
Salem, OR 97301
(971) 701-4913
kathleen.sloan@energy.oregon.gov

Facility Webpage:

<https://www.oregon.gov/energy/facilities-safety/facilities/Pages/SSS.aspx>

Subscribe for Email Notifications on this or other EFSC Facilities:

<http://web.energy.oregon.gov/cn/a6n53/subscribe>

Q&A Session/Comments

We will call on you

In Person: Please complete a comment card with your name and contact information and hand it to Nancy.

Webinar Participants: The bottom right of the main window is a set of icons.

Click on “Participants”

Click on the hand icon in bottom right of the participant window

Clicking on it again will lower your hand.

Phone Participants: We will call on you

Press *3 on your telephone keypad to raise your hand.

Press *3 again on your telephone keypad to lower your hand.

