

PUBLIC NOTICE



Carty Generating Station – Carty Solar Farm Request for Amendment of Site Certificate

Summary

Date Notice Issued: March 5, 2018

Proposal: The proposed amendment to the Site Certificate is for an approximately 50 MW photovoltaic solar farm and associated related or supporting facilities on approximately 300 acres.

Location: Northern Morrow County

Comment Deadline: April 6, 2018 (5 p.m.)

Amendment Request History

On February 20, 2018, the Oregon Department of Energy (the Department) received a revised amendment request from Portland General Electric, seeking approval from the Energy Facility Siting Council for a 50 MW solar PV facility. In August 2016, PGE submitted a request to amend the site certificate to extend the construction deadline for the previously-approved Unit 2 natural gas power generating facility, add a Unit 3 natural gas power facility, and add an approximately 50 MW solar PV facility. In May 2017, prior to an EFSC decision on that amendment request, PGE requested a suspension of the review. The revised amendment request only seeks approval of the 50 MW solar PV component.

Description of the Facility

In the revised amendment request, PGE is seeking EFSC approval to construct and operate an approximately 50 MW solar PV facility, together with related or supporting facilities. No other components are included in the current amendment request. The Carty Generating Station is a 450 MW combined-cycle natural gas-fueled electric generating power plant. The facility was previously approved by EFSC to consist of up to two 450-megawatt, combined-cycle electric generating turbines (Unit 1 and Unit 2). Unit 1 was constructed and placed in service in July 2016. The construction deadline for Unit 2 has passed and therefore, Unit 2 and all related or supporting facilities that were previously approved but not

built are no longer authorized, including the 18-mile 500 kV transmission line to the Slatt Substation in Gilliam County.

Location of Facility

The Carty Generating Station is located approximately 13 miles southwest of Boardman in Morrow County. The facility is adjacent to the Boardman Coal Plant. The proposed solar farm would be south of the Carty reservoir. Please note that the 500 kV transmission line approved in the original site certificate as a related or supporting facility to the energy facility would have extended across the western portion of Morrow County and into eastern Gilliam County to connect to the existing BPA Slatt Substation; however, because that transmission line was not built prior to the construction deadline, it is no longer part of the approved facility. As such, the entirety of the Carty facility, including the proposed solar farm, is located in Morrow County. A map of the facility is included at the end of this Public Notice. Additional maps and information can be found in Exhibits B and C of the RFA, available here:

<http://www.oregon.gov/energy/facilities-safety/facilities/Pages/CGS.aspx>

The Siting Council's Review Process

After reviewing the RFA and any comments received, the Department will prepare a Proposed Order that will recommend to the Council the approval, modification, or denial of the amendment request. Upon the release of the Proposed Order, the Department will issue a public notice for a 30-day period for comments or requests for a contested case hearing. The notice will explain the right to request a contested case hearing on the Proposed Order. Because the original amendment request was submitted in 2016, the Department and EFSC will review the request based on the EFSC amendment procedure rules that were in place at that time.

Receipt of this Notice

Please note that you may be receiving this notice for multiple reasons:

1. You own property within or adjacent to (within 500 feet) the site boundary. You will automatically receive all future notices on this facility.
2. You own property within or adjacent to (within 500 feet) the previously-approved 500 kV transmission line site boundary. As described above, the 500 kV transmission line is no longer part of the facility. You are receiving this notice as a courtesy; however, you will not automatically receive future notices. If you would like to receive future notices, you must sign-up via GovDelivery. Instructions are below.
3. You previously submitted a comment on the first iteration of the RFA. You are receiving this notice as a courtesy; however, you will not automatically receive future notices. If you would like to receive future notices, you must sign-up via GovDelivery. Instructions are below.
4. You have previously signed up via GovDelivery to receive notices related to the Carty Generating Station or all EFSC project-related notices. You will automatically receive all future notices per your GovDelivery choices, unless you unsubscribe via GovDelivery.

Comment Period

Public comments on the RFA must be received by the Department by **April 6, 2018, at 5 p.m.**

Comments must be submitted *in writing* by mail, email, hand-delivery or fax. Please send comments to:

Maxwell Woods, Senior Policy Advisor
Oregon Department of Energy
550 Capitol St. N.E.
Salem, OR 97301
Email: maxwell.woods@oregon.gov
Fax: 503-373-7806

Please Note:

- This is only the first opportunity to comment on the amendment request. The

Department will also solicit comments after issuing the Proposed Order.

- Comment submission does not automatically register your contact information to receive notices. If you would like to receive notices for this proposed facility or any other EFSC project, and have not already done so, please follow the information in the next section to subscribe to the GovDelivery email notification list.

More Information

Please contact the listed Department representative if you have questions. The public can also receive more information about the facility and updates on the review process by using the options below:

1) Oregon Department of Energy's webpage

More details on the Carty Generating Station, including the certificate holder's Request for Amendment, are available at:

<https://www.oregon.gov/energy/Siting/Pages/CGS.aspx>

2) Updates by Email/Mail

Subscribe to GovDelivery, a self-managed, automated email system that sends notices and updates on the Carty Generating Station as well as any or all other energy projects and events under Council jurisdiction. For more information, please visit:

<http://tinyurl.com/EFSC-email>.

To receive mail notices, please contact Maxwell Woods.

3) In Hardcopy

Copies of the amendment request are available for public review at:

Oregon Department of Energy
550 Capitol St. N.E.
Salem, OR 97301

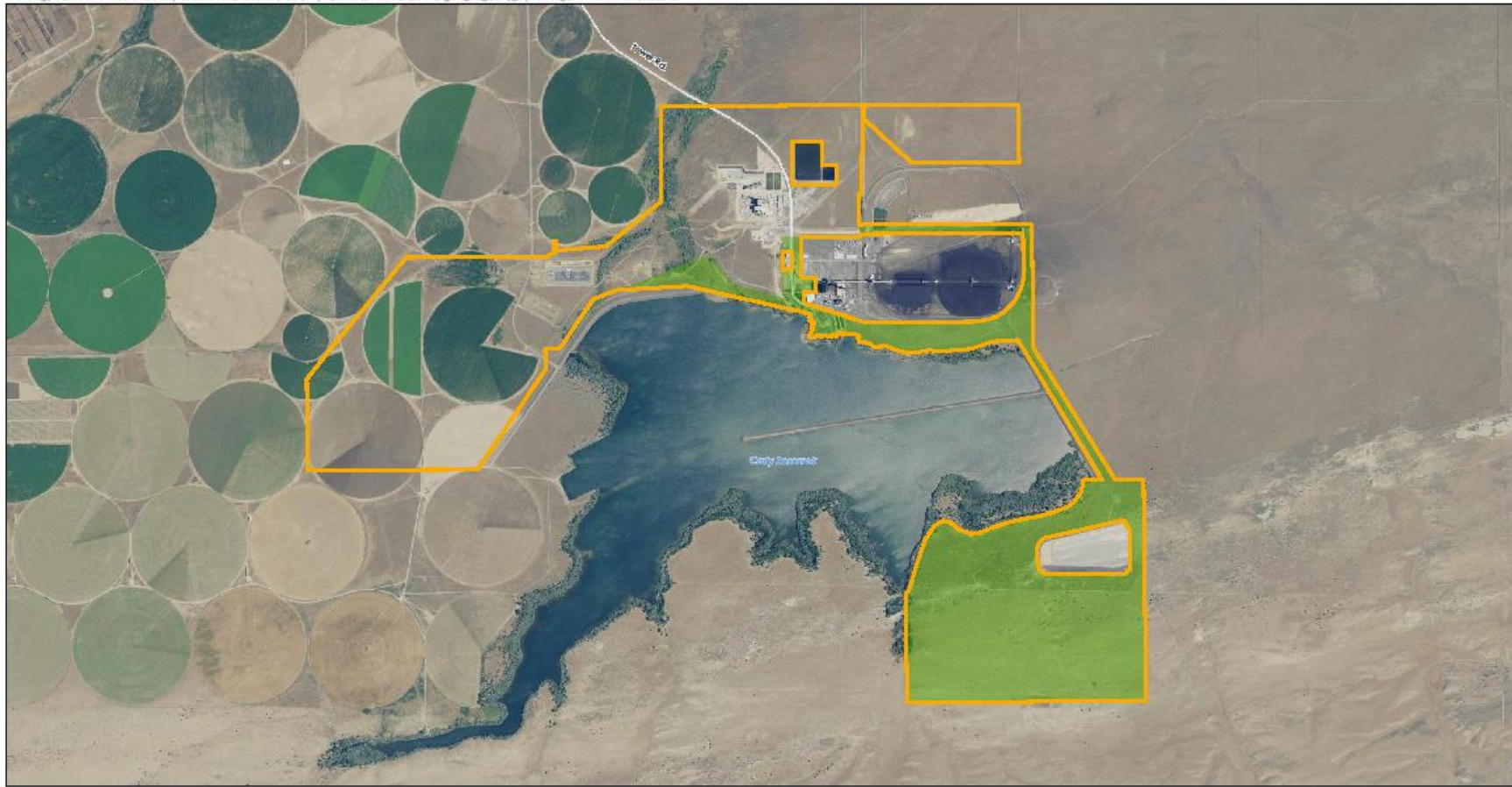
Accessibility Information

The Oregon Department of Energy is committed to accommodating people with disabilities. If you require any special physical or language

accommodations, or need information in an alternate format, please contact Esther Kooistra at 503-378-3895, toll-free in Oregon at 800-221-8035, or email to esther.kooistra@oregon.gov.

This page intentionally blank

© Ecology & Environment, Inc. GIS Department M:\Portland\FGE\Map\MXD\Exhibit\B\2017\Figure_B-2_Carty_Expansion_Overview.mxd 1/28/2018



- Amended Site Boundary
- Carty Site Boundary Expansion Areas

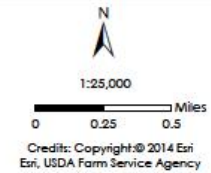


Figure B-2
Site Overview and
Amended Site Boundary

Request for Amendment No. 1
Carty Generating Station Site Certificate
Portland General Electric Company
February 2018