

# PUBLIC NOTICE

## Carty Generation Station

### Preliminary Request for Amendment 2

**Summary:**

Date Notice Issued: March 13, 2020

Request: Request for Amendment 2 (RFA2) of the Carty Generating Station site certificate requests the incorporation of shared infrastructure and existing facilities (shared by the Boardman Coal Plant and Carty Generating Station) into the Carty Generating Station site certificate; modification to the Site Boundary of the Carty Generating Station; and the construction of new infrastructure including but not limited to a new sewer line, a new backup water pipeline, new potable water line, and a new office and warehouse space. RFA2 would increase the facility site boundary from 1,581 acres to 4,611 acres (an increase of approximately 3,030 acres) by almost entirely incorporating existing areas within the existing site boundary of the Boardman Coal Facility. The amendment is related to the pending shutdown of the Boardman Coal Facility, which is scheduled to occur by end of 2020. The Boardman Coal facility and the Carty Generating Station are located adjacent to each other.

Facility Location: Gilliam and Morrow Counties

*Information Only: Please note, this notice is to provide early notification of this request for amendment. There is no comment period associated with this phase of the review.*

Review Process: Type B amendment review has been requested and staff is currently reviewing that request.

**Introduction:**

On February 28, 2020, the Oregon Department of Energy (ODOE), staff to the Energy Facility Siting Council (EFSC), received a preliminary Request for Amendment 2 (pRFA2) to the Carty Generating Station Site Certificate.

**Description of Facility (Operational):**

Carty Generating Station is an operational natural gas-fueled combined-cycle unit capable of generating

450 megawatts, and includes a not-yet-constructed 50 megawatt solar PV electric power generating unit. The facility is located within a site boundary of approximately 1,581 acres in Morrow County. The certificate holder is Portland General Electric.

**Facility Location:**

The existing Carty Generating Station and most related or supporting facility components of RFA2, are located in Morrow County, south of Interstate 84 and south of Boardman. The existing 230 kV transmission line is located in both Morrow and Gilliam counties. A map of the facility site boundary is included in this notice. For detailed maps, please see Figures 1 through 3 of the preliminary Request for Amendment 2 available on the [Department's website](#), or visit our online mapping tool at <https://tinyurl.com/EFSCmap>.

**Current and Next Review Phase:**

The current preliminary request for amendment phase consists of staff reviewing the request to ensure there is information adequate for EFSC to make findings or impose conditions on all applicable Council standards. Once the application has been determined to be complete and staff has issued its Draft Proposed Order (initial staff recommendation) another notice will be sent with a comment period. If staff determines Type A review process is justified there will be a public hearing in front of EFSC in the vicinity of the project and the comment period will conclude at the close of the hearing. If staff determines Type B review process is justified, the comment period will be a written comment period only and conclude on the date indicated in the notice.

**Receipt of this Notice:**

Please note that you may be receiving this notice for multiple reasons:

1. You own property within or adjacent to (within 500 feet) the property on which the project is located. You will automatically receive all future notices on this facility.
2. You have requested to receive paper notices on the Carty Generating Station. If you wish

to be removed from this mailing lists, please contact Chase McVeigh-Walker.

3. You have previously signed up via GovDelivery/ClickDimensions or by contacting ODOE to receive notices related to Carty Generating Station or all EFSC project-related notices. You will automatically receive all future notices per your request, unless you unsubscribe via ClickDimensions or by contacting ODOE.

**More Information:**

Please contact Chase McVeigh-Walker, Senior Siting Analyst, at the phone, email address or mailing address listed in this notice.

Chase McVeigh-Walker, Senior Siting Analyst  
Oregon Department of Energy  
550 Capitol Street NE, 1<sup>st</sup> Floor  
Salem, OR 97301  
Email: [chase.mcveigh-walker@oregon.gov](mailto:chase.mcveigh-walker@oregon.gov)  
Phone: 503-934-1582

More information about the facility and updates on the review process is available using any of the following options.

**1) Oregon Department of Energy’s webpage:**

More details on Carty Generating Station, including the certificate holder’s Request for Amendment 2 and Amendment Determination Request, are available online at:

<https://www.oregon.gov/energy/facilities-safety/facilities/Pages/CGSaspx>

Additional resources to help you participate in the state siting process can be found at:

<http://www.oregon.gov/energy/facilities-safety/facilities/pages/default.aspx>

**2) Updates by email/mail:**

Subscribe to ClickDimensions, a self-managed, automated email system that sends notices and updates on Carty Generating Station as well as any or all other energy facilities and events under EFSC jurisdiction. For more information, please visit:

<https://tinyurl.com/ODOE-EFSC>.

To receive notices by U.S. Mail, please contact Chase McVeigh-Walker.

**3) In hardcopy:**

Hard copies of the Amendment Determination Request and Request for Amendment 2 are available for public inspection at:

Oregon Department of Energy  
550 Capitol Street NE  
Salem, OR 97301

**Accessibility information:**

The Oregon Department of Energy is committed to accommodating people with disabilities. If you require any special physical or language accommodations, or need information in an alternate format, please contact Michiko Mata at 503-378-3895, toll-free in Oregon at 800-221-8035, or email to [michiko.mata@oregon.gov](mailto:michiko.mata@oregon.gov).

Figure 1: Proposed Facility Location

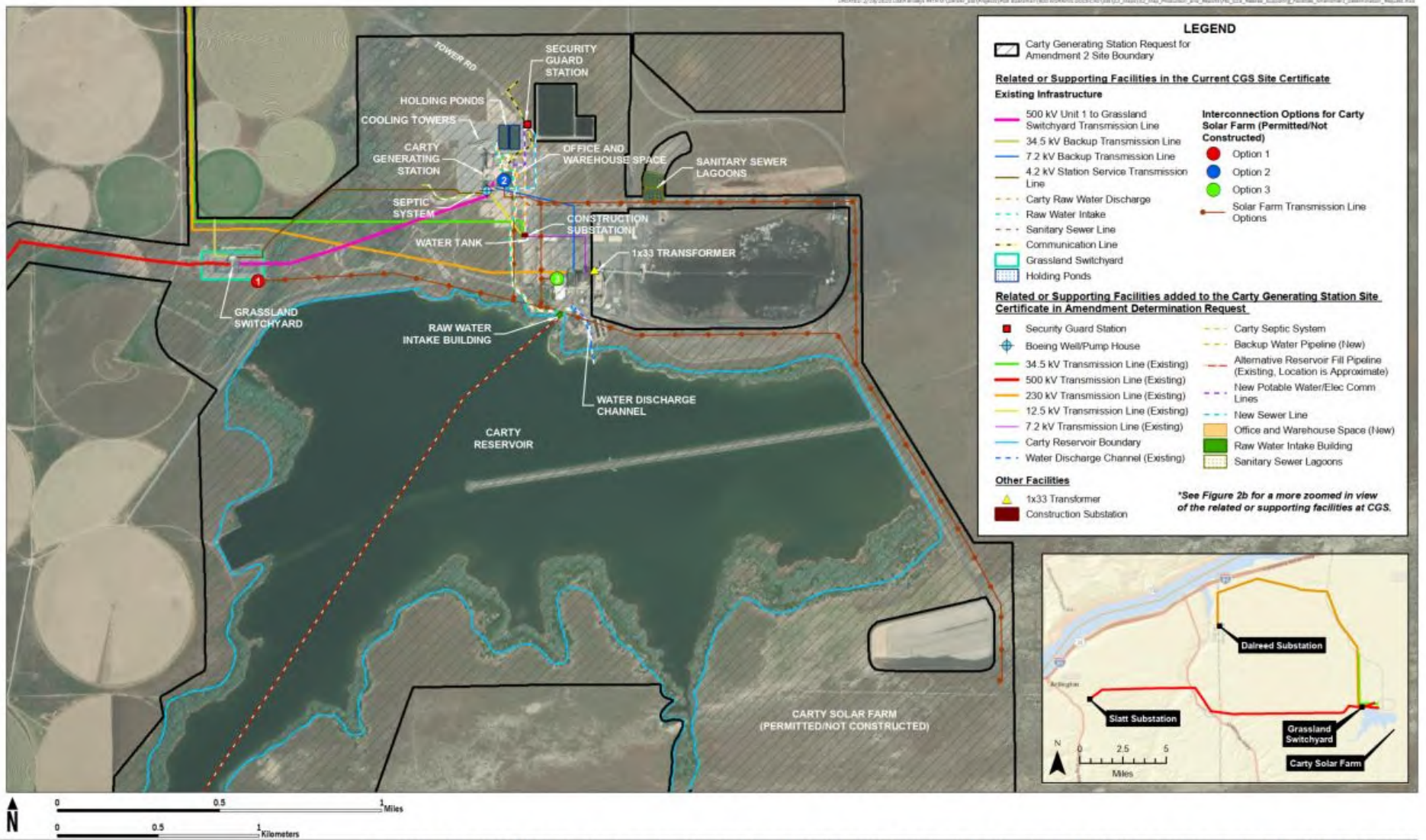


FIGURE 2A - CARTY GENERATING STATION - RELATED OR SUPPORTING FACILITIES - AMENDMENT DETERMINATION REQUEST

PORTLAND GENERAL ELECTRIC COMPANY

**AECOM**  
 Portland General Electric Company  
 Project No: 00004868 Date: February 2020