

# Oregon Department of **ENERGY**

Deschutes Solar and  
Battery Energy Storage  
System Facility

Notice of Intent  
Informational Meeting

March 27, 2025  
Maupin Civic Center  
Maupin, OR.



5:30 PM - Meet and Greet and  
1:1 conversations with ODOE  
and Applicant

6:00 PM – Presentations then  
Q&A/Comment

# AGENDA

- Public Meeting Overview
- Siting Process Overview (ODOE)
- Proposed Facility Overview (Applicant)
- Q&A Session - Comment

## Notice of Intent to Apply for a Site Certificate

Deschutes Solar and Battery Energy  
Storage System Facility

SUBMITTED TO  
Oregon Energy Facility Siting  
Council

PREPARED FOR



DATE  
21 February 2025



# Meeting Overview

---

This informational meeting:

- Is intended to give members of the public an opportunity to learn about the proposal and provide comment on the NOI.
- Is **not** a contested case hearing, and participation in the meeting is not required to preserve issues or standing for the contested case.

Please hold all questions and comments until the Q&A session at end of the presentations. Commenters will be subject to time limits in order to allow all who may want to comment, to make comments tonight.

Any person engaging disruptive behavior may be asked or required to leave the meeting.

# Oregon's Energy Facility Siting Program

---

## Who We Are

Oversees review, decision-making, and compliance for most large-scale energy-generating facilities and infrastructure in Oregon.

- Energy Facility Siting Council (EFSC) is decision-making authority.
- Oregon Department of Energy (ODOE), Siting Division serves as staff to EFSC.

## What We Do

Consolidated process between state agencies and local government:

- Eliminates duplication, consolidates timelines, decisions, and judicial review
- Reviews proposal for compliance with applicable standards, laws, and rules.
- Provides opportunities for public participation and comment.
- Coordinates review and solicits input from reviewing agencies, local governments, and tribal governments.



# State Jurisdictional “Energy Facilities” ORS 469.300(11)(a)(D)

A solar photovoltaic power generation facility using more than:

- (i) 240 acres located on high-value farmland as defined in ORS 195.300;
- (ii) 2,560 acres located on land that is predominantly cultivated or that, if not cultivated, is predominantly composed of soils that are in capability classes I to IV, as specified by the National Cooperative Soil Survey operated by the National Resources Conservation Service of the United States Department of Agriculture; or
- (iii) 3,840 acres located on any other land.**



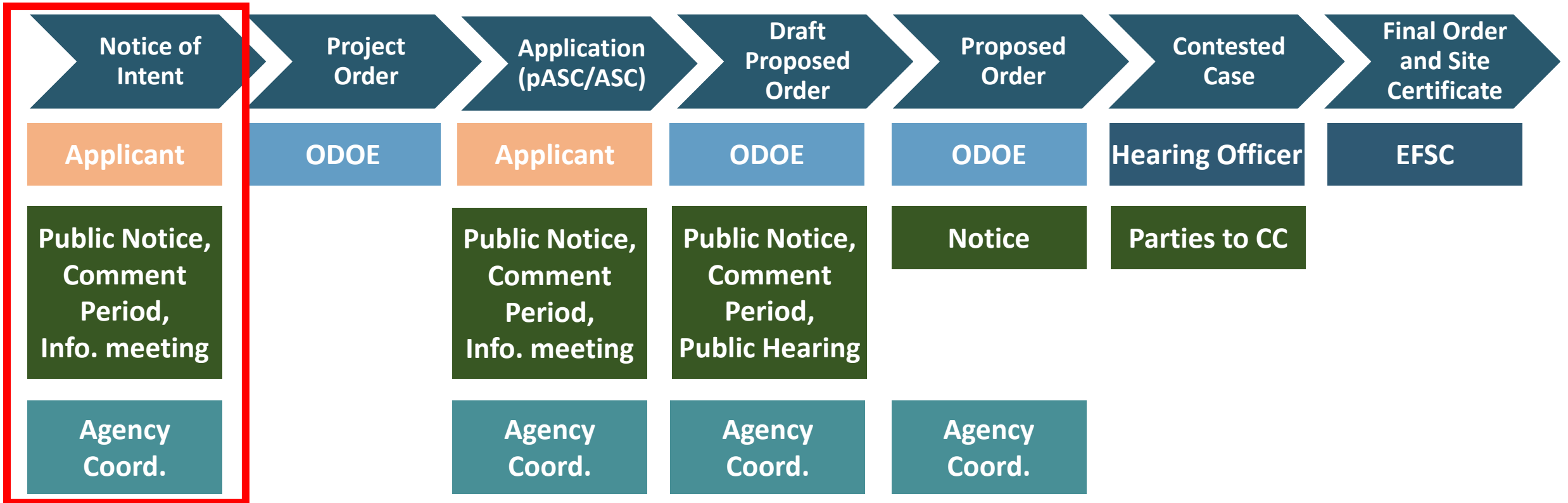
# Proposed Facility

---

- The proposed facility qualifies as an “energy facility” under ORS 469.300(11)(a)(D), and the applicant must obtain a Site Certificate from the Oregon Energy Facility Siting Council (EFSC or Council) before it may construct or operate of the proposed facility.
- To obtain a site certificate the applicant must demonstrate that the proposed facility meets the standards established by the Council in OAR chapter 345, other applicable Oregon statutes, rules and standards, and Oregon’s land use planning goals.
- ODOE serves as staff to the Council and conducts much of the application review process. Submitting the NOI is the first step in the process of obtaining a site certificate.

# ENERGY FACILITY SITING PROCESS

## Application for Site Certificate Process



**WE ARE HERE**

# Reviewing Agency Coordination

---

## **Reviewing Agencies, Tribal Governments, and Special Advisory Groups:**

- Provide comments on the proposed facility within the jurisdiction or expertise of the agency
- Make recommendations regarding the size and location of analysis area(s)
- Identify:
  - Studies that should be conducted to identify potential impacts
  - Statutes, administrative rules, applicable substantive criteria, and local government ordinances administered by the agency
  - Permits administered by the agency that might apply to construction or operation of the proposed facility

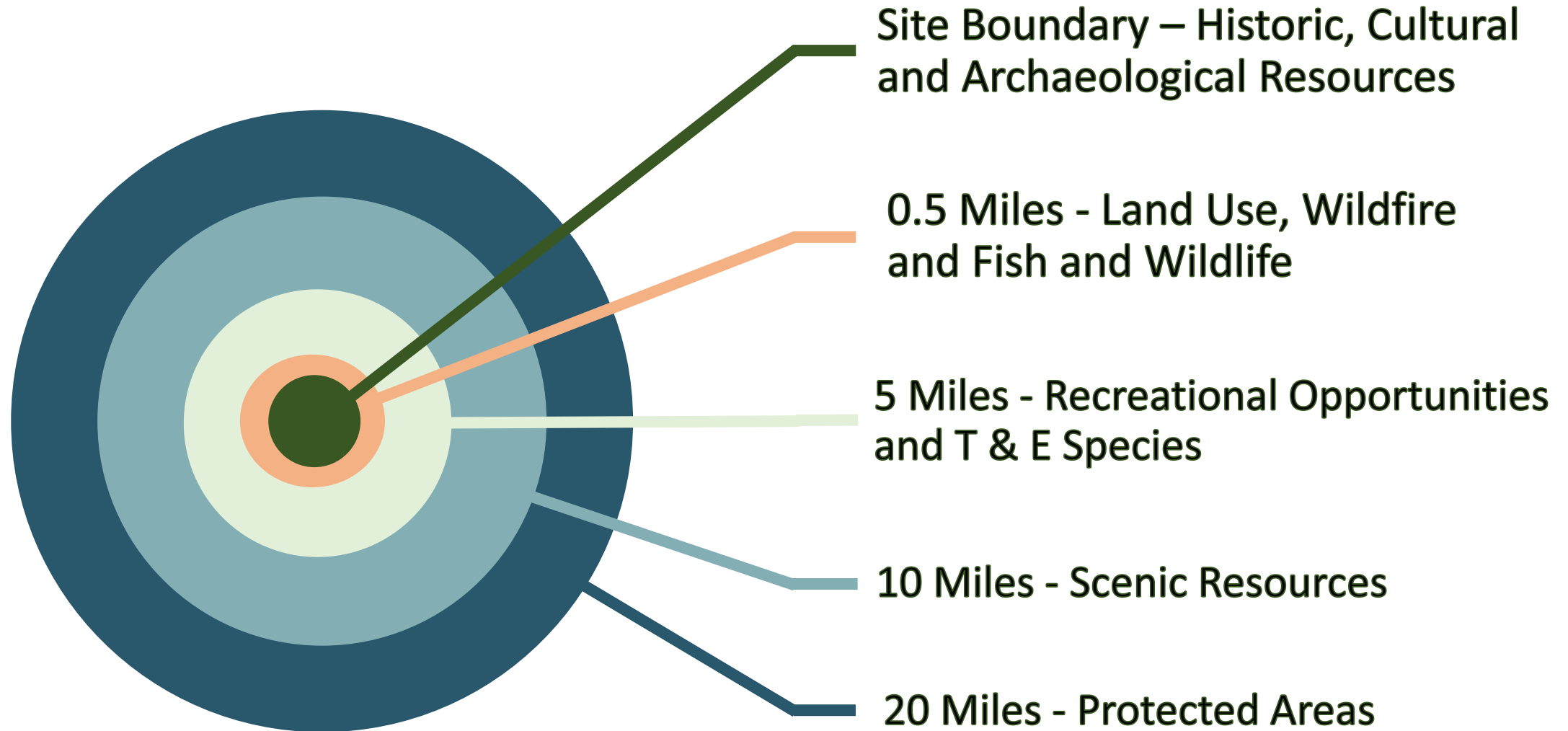


# Energy Facility Siting Process

## EFSC Siting Standards:

- **General Standard of Review**
- **Organizational Expertise**
- **Structural Standard**
- **Soil Protection**
- **Land Use**
- **Protected Areas**
- **Retirement and Financial Assurance**
- **Fish and Wildlife Habitat**
- **Threatened and Endangered Species**
- **Scenic Resources**
- **Historic, Cultural and Archaeological Resources**
- **Recreation**
- **Public Services**
- **Waste Minimization**
- **Wildfire Prevention and Risk Mitigation**
- **Noise**
- **Siting Standards for Transmission Lines**
- **Need Standard**

# NOI Study Area Distances

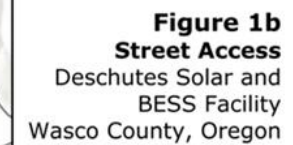


# Land Use

---

- The applicant may choose to obtain land use approval from EFSC or from the affected local governments.
- NOI indicates applicant intends to seek land use determination from EFSC
- If election changes, interested persons should participate in the local land use process.

Approximately  
13,626 acres  
(21.3 sq. mile) of  
private land  
in Wasco County,  
approximately  
10 miles  
southwest of  
Maupin.



# Deschutes Solar and BESS Proposed Facility

---

## **Energy Facility**

- Solar Modules/arrays (1,000 MW capacity)
- Posts and Trackers
- 34.5 kilovolt (kV) Collector System
- Inverters/Transformers

## **Related or Supporting Facilities**

- Battery Energy Storage System – up to 1,000 MW (4,000 MW hours) capacity.
- 34.kV Collector substation
- 0.5 mile 500 kV generation-tie line
- 500 kV switchyard
- Operations and Maintenance Building
- Access Roads
- Perimeter Fencing and gates
- Construction staging areas





# DESCHUTES SOLAR

2025

## Portfolio Overview

- BrightNight designs, develops, and operates safe, reliable, large-scale renewable power projects.
- 2.7 GW of projects with PPAs or under negotiation
- 300 MW Box Canyon solar project in Arizona to start construction in early 2024
- 1 GW in construction by 2025

**20 GW**  
Project portfolio



U.S.

**6.3 GW**  
PNW is BN's Priority Market



## Differentiated customer solutions for renewable power

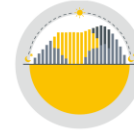
*Operating under an integrated development & IPP model*



Integrated  
Solar & Storage



Hybrid Projects  
(Complementary  
Resources)



Dispatchable  
Solutions



### PowerAlpha™

#### Hybrid Design & Dispatch

Our proprietary software provides a **tailored analysis for customers** to uncover the highest value project and to optimize asset management



#### Customer-centric

We learn about your goals and challenges to design a **renewable solution** not just a project



World-class team led  
by **Martin Hermann**



**Deep Experience and Depth** across  
renewables, software, finance, and  
operations



**152 Employees with deep expertise**  
in utilities and power markets

## Experienced team members:

- VP of Permitting (15+ yrs in power. Previous: Terra-Gen)
- VP of Development (15+ yrs in power, Calpine)
- VP of Asset Management and O&M (20+ yrs, Fluence)
- VP Procurement (15+ yrs in power, Clenera)
- VP Development (16 yrs in power at NextEra)
- VP Development (20+ yrs in power at Terra-Gen)

With \$1B in committed capital, BrightNight is fully funded to expand its power plant portfolio.





## Proposed Location

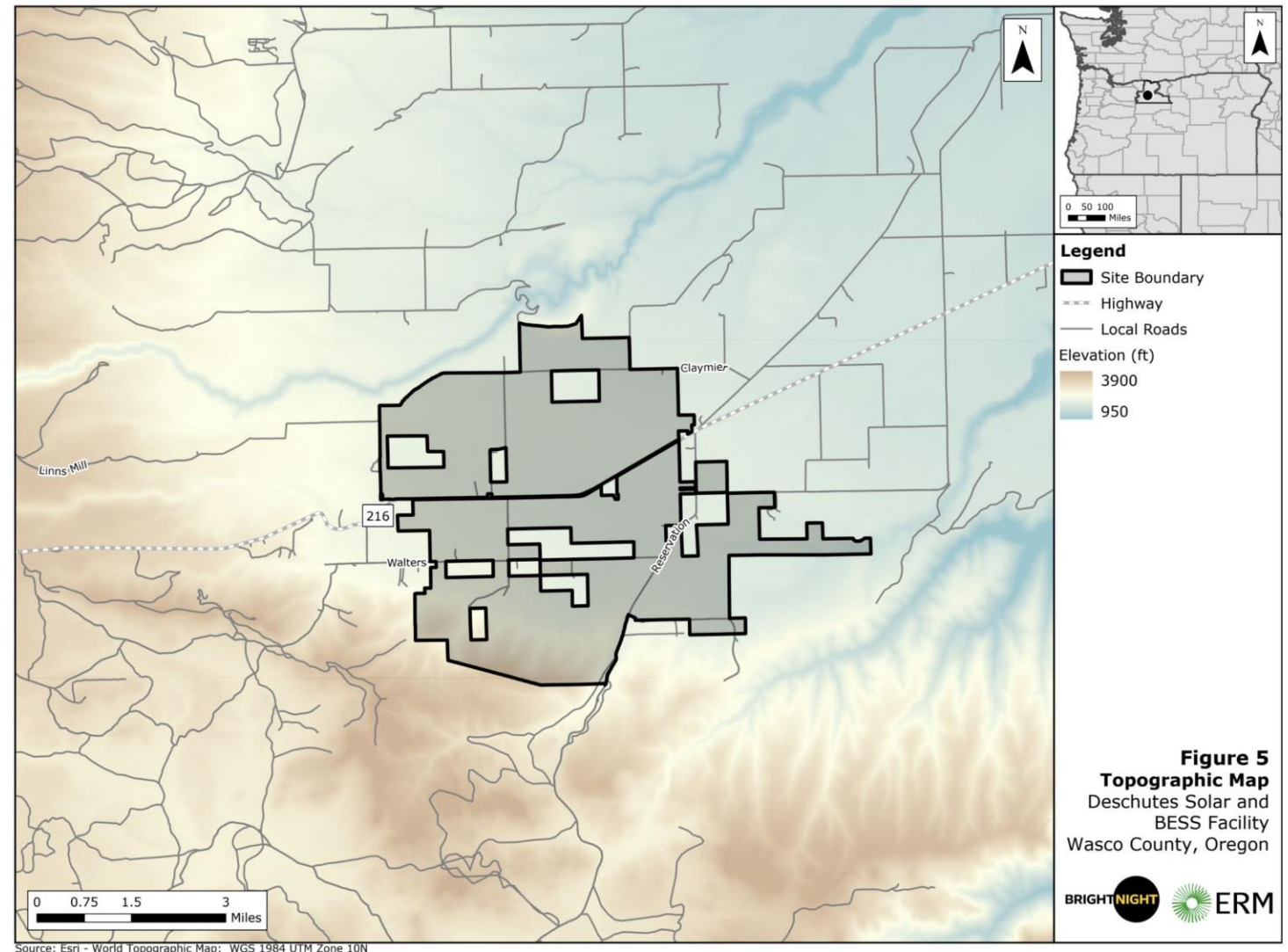
- Wasco County, Oregon
  - Wapinitia
  - Pine Grove
- Maupin, Oregon – 6 miles Northeast
- Deschutes River – 3 miles East
- White River – Borders project to the North
- Confederated Tribes of the Warm Springs Indian Reservation – Borders project to the South
- Mt. Hood National Forest – 3 miles West
- State Highway 216 – Bisects project area





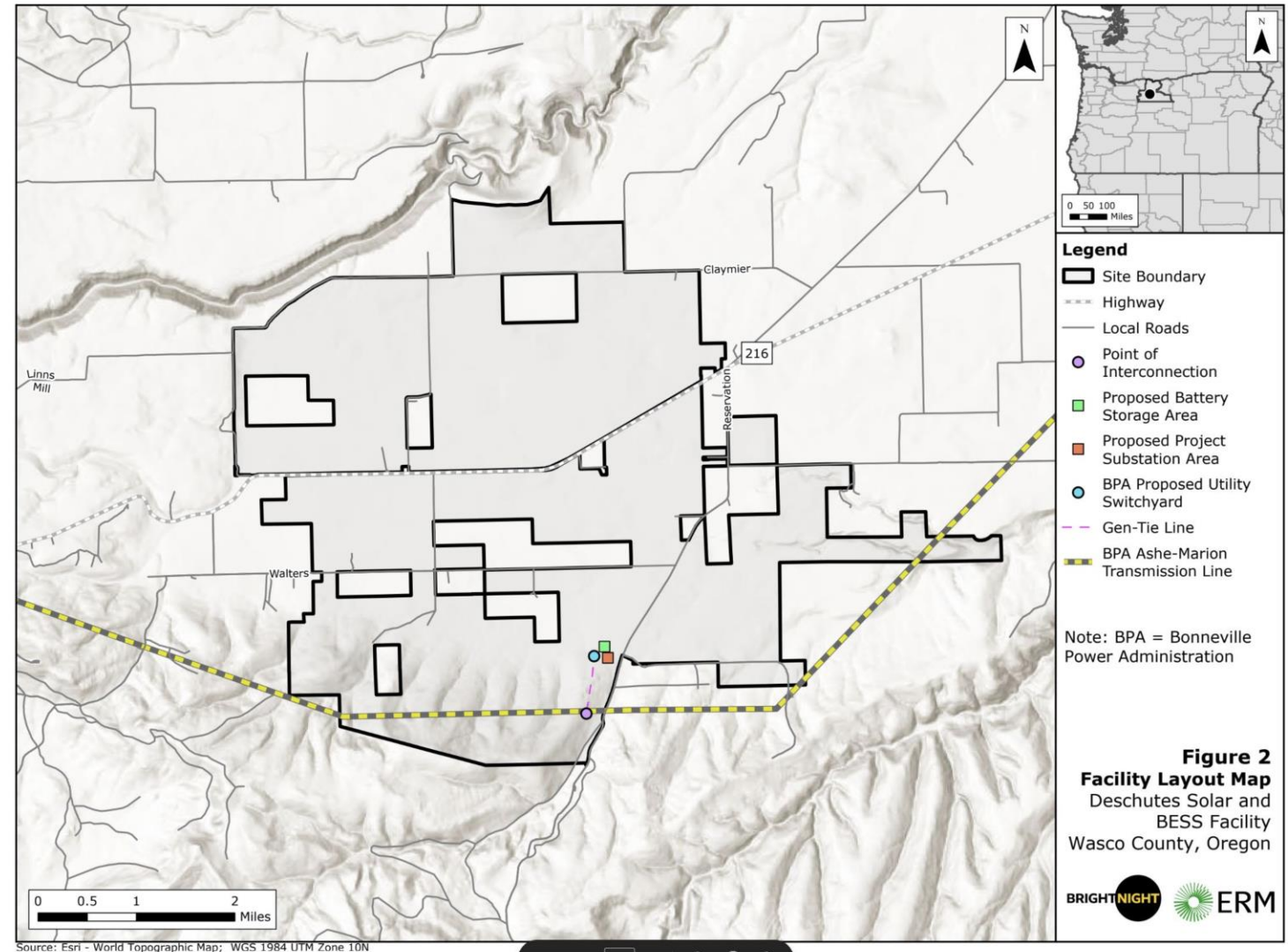
## Site Characteristics

- Sited to minimize impacts
  - 97% of soils mapped are Class 3 or lower quality
  - Minimal conflict to surrounding properties
  - Existing roads
- Sited entirely on private land
  - Actual project area will be approximately 7,500 acres
  - Land Zoned Exclusive Farm Use
  - Land is difficult to yield crops due to intermittent irrigation system
  - Landowner support is high



## General Information

Name	Deschutes Solar
Capacity	1 GW AC Solar + up to 1 GW Battery Energy Storage System (BESS)
Grid Operator	Bonneville Power Administration
POI	Buckley - Marion 500kV BPA Line
Interconnect Agreement	Agreement in process
Site Control	98%





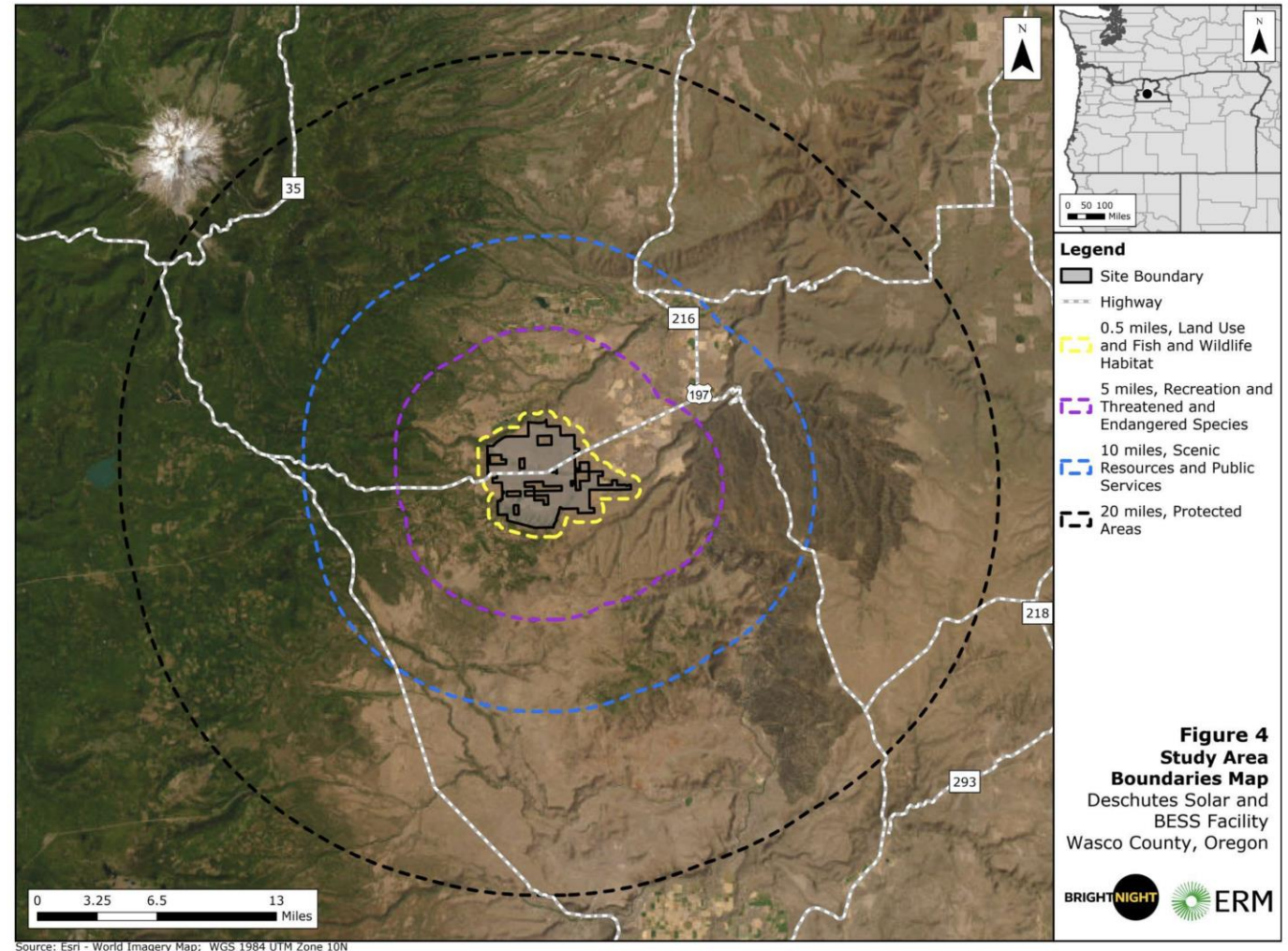
## Site Surveys – Completed

Avian	Q2 2024 ✓
Rare plants / habitat classifications	Q3 2024 ✓
MET Station deployment	Q3 2024 ✓
Wetlands / waters delineation	Q4 2024 ✓
Geotech investigation	Q4 2024 ✓
ODFW site walk	Q4 2024 ✓
Lidar flight / Topography	Q4 2024 ✓

## Site Surveys – Ongoing

ALTA	Q2 2024 –
Cultural	Q2 2024 –

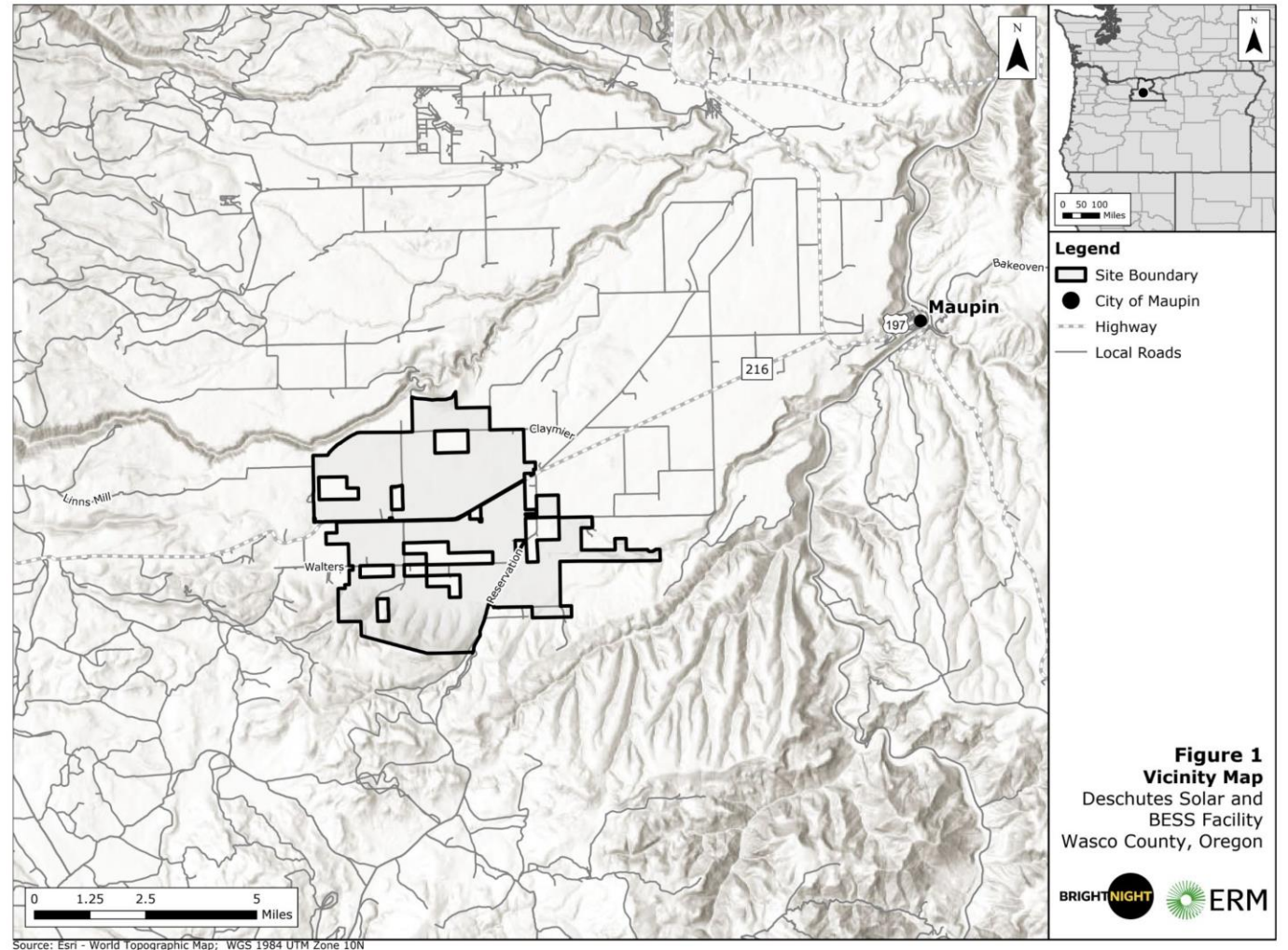
- Map depicts EFSC required survey areas





## Project Status

EFSC Notice of Intent (NOI)	Q1 2025 ✓
Project Open House	Q1 2025 ✓
ODOE Public Information Meeting	Q1 2025 ✓
File EFSC - Application for Site Certificate (ASC)	Q3 2025
Draft Proposed Order	Q3 2026
DPO Public Hearing	Q4 2026
Final Notice to Proceed (FNTF)	Estimated Q2 - Q3 2027
Commercial Operations Date (COD)	Estimated Q4 2028 - Q2 2029





## Phase 1: Civil & Site Prep

## Phase 2: Racking & Infrastructure

## Phase 3: Panel Installation

## Phase 4: Electrical

## Phase 5: Testing & Revegetation

### Key Developments

- |   |   |   |  |   |
|---|---|---|--|---|
| <ul style="list-style-type: none"><li>▪ Laydown areas</li><li>▪ Implement soil erosion measures</li><li>▪ Limited grading</li><li>▪ Install/upgrade project access roads and internal circulation</li><li>▪ Perimeter fencing</li><li>▪ Trenching</li></ul> | <ul style="list-style-type: none"><li>▪ Posts placed in ground over project area</li><li>▪ Install pivot tracker to rotate solar panels</li><li>▪ Begin electrical equipment install</li><li>▪ Substation, Gen-tie, O&amp;M Facility &amp; Switchyard</li></ul> | <ul style="list-style-type: none"><li>▪ Panels are installed on racks</li></ul> | <ul style="list-style-type: none"><li>▪ DC wiring</li><li>▪ AC wiring</li><li>▪ Inverter installation</li><li>▪ Transformer installation</li><li>▪ Instrumentation and controls installation</li><li>▪ Substation completion</li></ul> | <ul style="list-style-type: none"><li>▪ Inspections and testing of installed equipment</li><li>▪ Site safety testing and training</li><li>▪ Revegetation implementation of habitat mitigation</li></ul> |
|---|---|---|--|---|

### What to Expect

- |  |   |  |  |   |
|--|---|--|--|---|
| <ul style="list-style-type: none"><li>▪ Temporary traffic</li><li>▪ Use of machinery limited to daytime hours</li><li>▪ Equipment delivery</li></ul> | <ul style="list-style-type: none"><li>▪ Equipment delivery vehicles</li><li>▪ Crews onsite for installation</li><li>▪ Minimal machine noise while posts are installed</li><li>▪ De-mobilization of large construction equipment</li></ul> | <ul style="list-style-type: none"><li>▪ Panel delivery trucks</li><li>▪ Project outline will begin to take shape</li><li>▪ Low noise during panel install</li><li>▪ Peak of construction</li></ul> | <ul style="list-style-type: none"><li>▪ Low noise during electrical installation</li></ul> | <ul style="list-style-type: none"><li>▪ Inspection crews</li><li>▪ Plant begins operation</li></ul> |
|--|---|--|--|---|



**Panels and posts are safe for the environment.** Their placement on land does not result in soil or water contamination

Agricultural land at rest during the life of a solar project **provides regenerative soil benefits**

At the end of a project's life, the project is removed; and **the majority of project materials will be recycled**

Solar panels

8-10 ft panel height

Mechanism that slowly tilts panels to follow the sun

Solar panel surface area does not cause rainwater pooling

Traditional ground mount installation

No concrete

GROUND LEVEL

10 ft into the ground

Leased site selected for the project. Provides valuable income to local landowners



Quiet operation



No odor or emissions



Monitored remotely with only occasional site visits



Panels are designed to absorb the sun, not reflect it. A glare study is conducted to ensure minimal impact

SIMULATION | PICTURED ON FLAT TERRAIN

[BrightNightPower.com](https://BrightNightPower.com)



## BESS projects are safe for the environment.

There are no emissions or contamination from BESS facilities to the air, water, or soil.

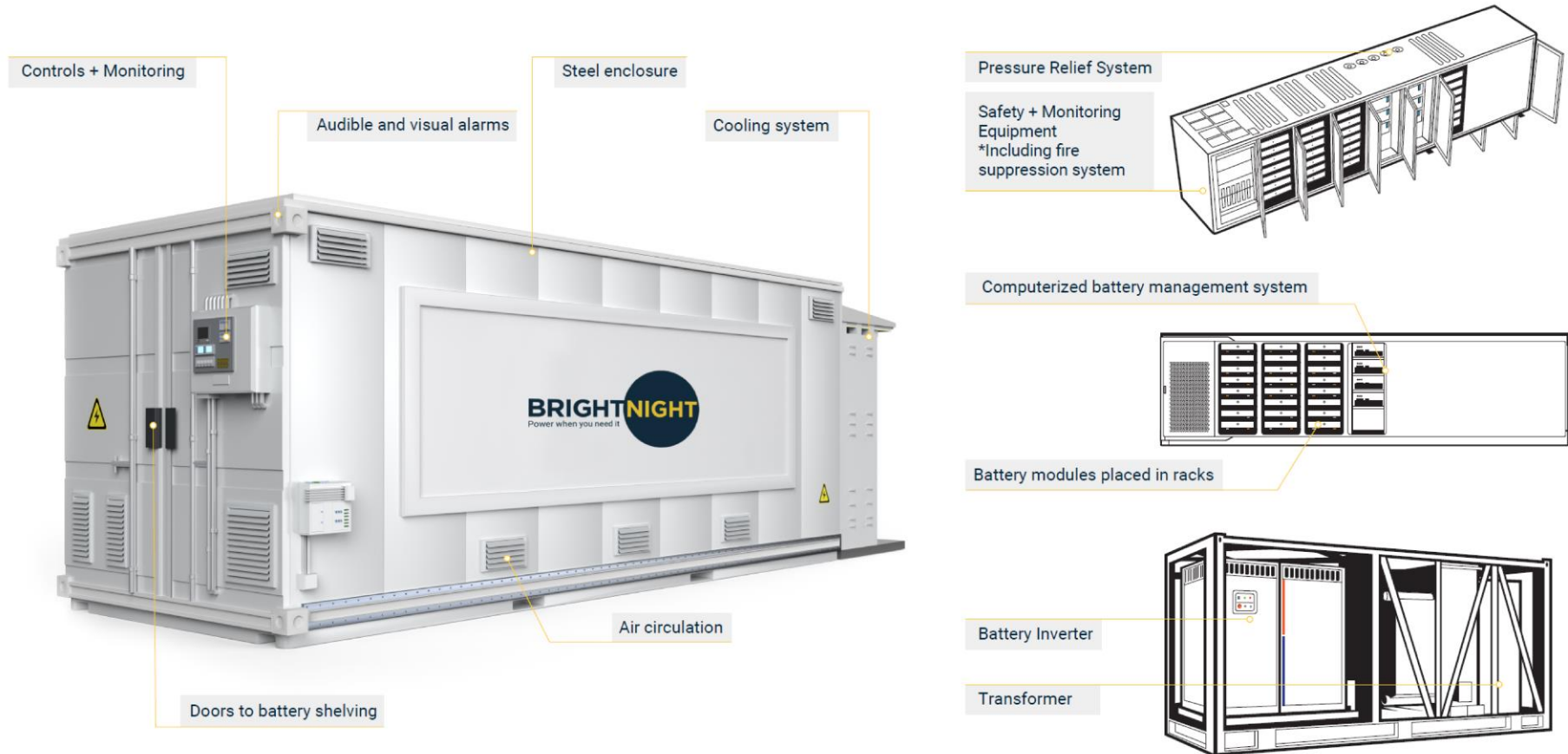
At the end of the system's lifetime, BrightNight will safely remove the battery enclosures and recycle the majority of the project's components.

No water-use or emissions.

Cost-effective and energy dense option for space-constrained area

Quick response time; less than 200 milliseconds

## Internal Components of Battery Enclosure





For every project community to enjoy the direct impact of our work, we prioritize local support alongside the development and ongoing operations of our project.

## Benefits to Wasco County



- Tax revenue over the life of the project
- Jobs created
- Local economic infusion during construction
- Philanthropic impact
- Economic impact assessment under way

## Local support considered



- **Josh Thompson Memorial Marquee**  
(donation made)
- **Nick Laflin Memorial Scholarship Fund**  
(donation made)
- **Silent Auction for the Rodeo Queens Benefit**  
(donation made)
- **Fire Department / EMS Services**

What is most important to Maupin & Wasco County?



# Public Comment Period

---

- Opportunity for the public to comment on the Notice of Intent is Open. All written comments submitted to ODOE are included in the public record and provided to the applicant.
- Comment period closes on **April 25, 2025 at 5:00 PM Pacific Time.**
- Comments can be submitted in writing: here at this meeting, via mail, via email to Kathleen Sloan at: [kathleen.sloan@energy.oregon.gov](mailto:kathleen.sloan@energy.oregon.gov) or through our comment portal available at:

<https://odoe.powerappsportals.us/en-US/SitingPublicComment/>

- Details on how to comment are in the Public Notice on the facility webpage:  
<https://www.oregon.gov/energy/facilities-safety/facilities/Pages/DSB.aspx>

This meeting is not a public hearing, and participation is not required to establish standing to participate in the contested case during the review of the Application for Site Certificate.

# Q&A Session/Comments

## We will call on you

**In Person:** Please complete a comment card with your name and contact information and hand it to Nancy.

**Webinar Participants:** The bottom right of the main window is a set of icons.

Click on “Participants”

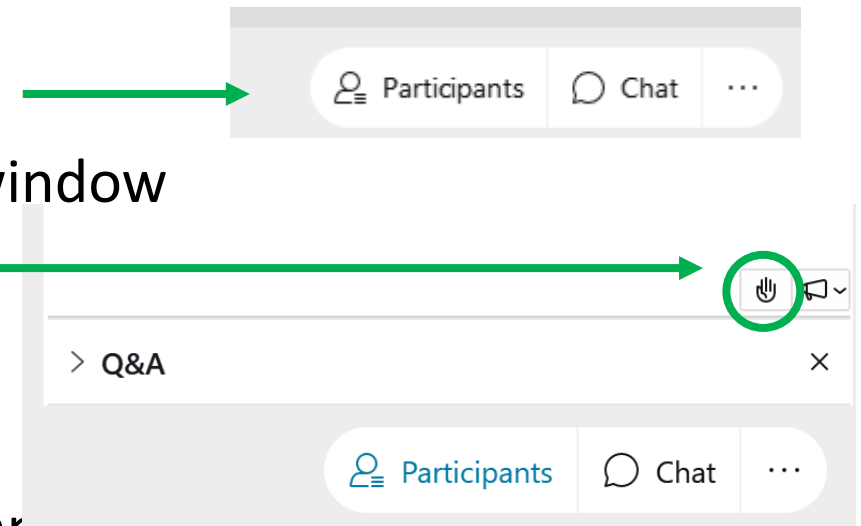
Click on the hand icon in bottom right of the participant window

Clicking on it again will lower your hand.

**Phone Participants:** We will call on you

Press \*3 on your telephone keypad to raise your hand.

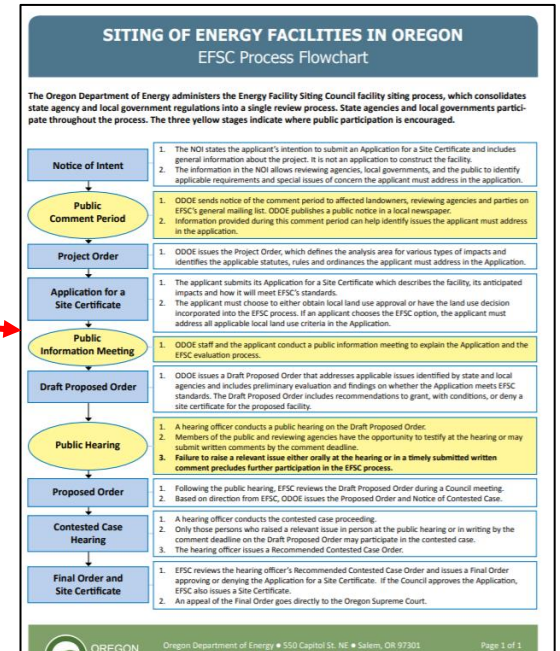
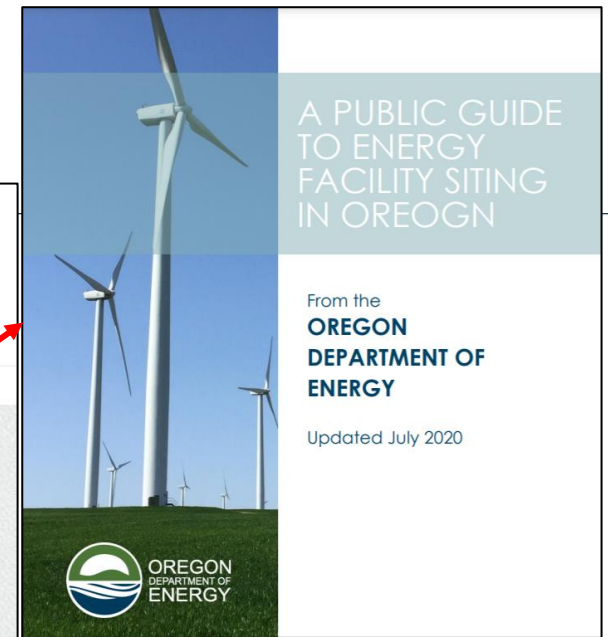
Press \*3 again on your telephone keypad to lower your hand.



# Helpful Resources

Oregon Department of Energy / Energy Facilities & Safety / Facilities

## Energy Facility Siting



Home > Siting Public Comment

## Siting Public Comment

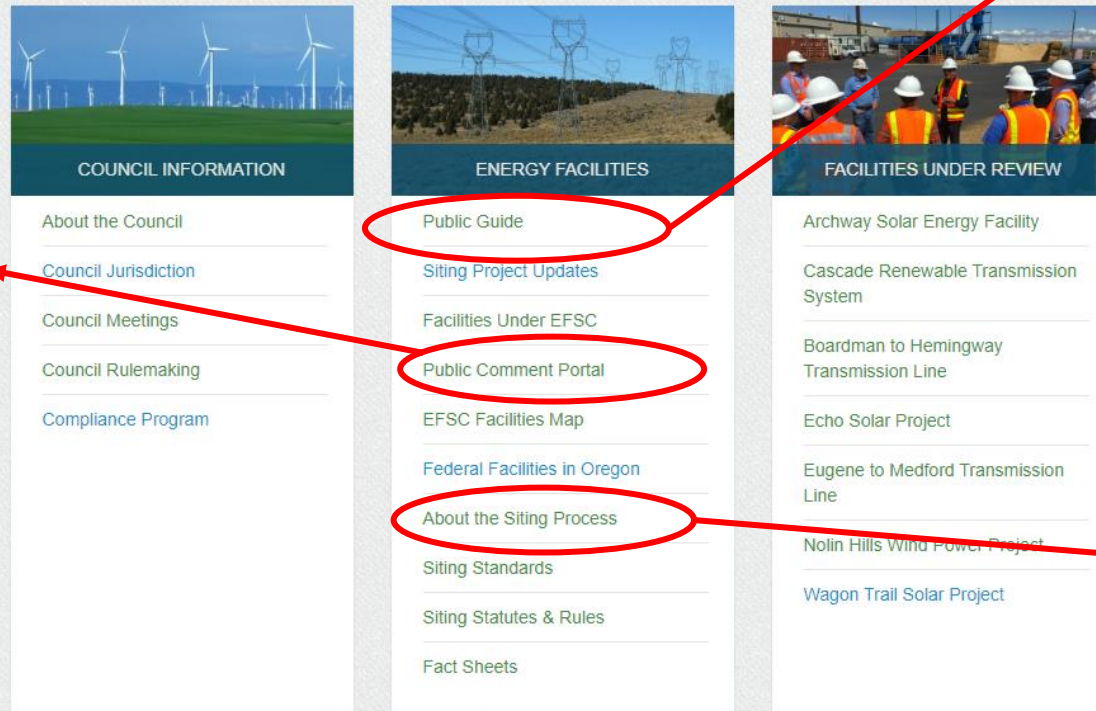
\* Required Field

### Project Selection

Project \*

Please select the project that you are interested in commenting on

Next



<https://www.oregon.gov/energy/facilities-safety/Pages/default.aspx>

<https://www.oregon.gov/energy/facilities-safety/facilities/Pages/DSB.aspx>

<https://odoe.powerappsportals.us/en-US/SitingPublicComment/>



# ODOE Comment Portal

---

Go to: <https://odoe.powerappsportals.us/en-US/SitingPublicComment/>

Select: “**Deschutes Solar and BESS**” from dropdown menu

Follow: Prompts to create a comment

Create: Enter your comments – 25 MB limit on attachments

Submit: Your comments

You will receive an email confirmation of your submittal

Reminder: Public Comment Closes on **April 25, 2025** at 5:00 PM Pacific Time

# ODOE Contact

---

Kathleen Sloan, Senior Siting Analyst  
Oregon Department of Energy  
550 Capitol St. NE  
Salem, OR 97301  
(971) 701-4913  
[kathleen.sloan@energy.oregon.gov](mailto:kathleen.sloan@energy.oregon.gov)

Facility Webpage:

<https://www.oregon.gov/energy/facilities-safety/facilities/Pages/DSB.aspx>