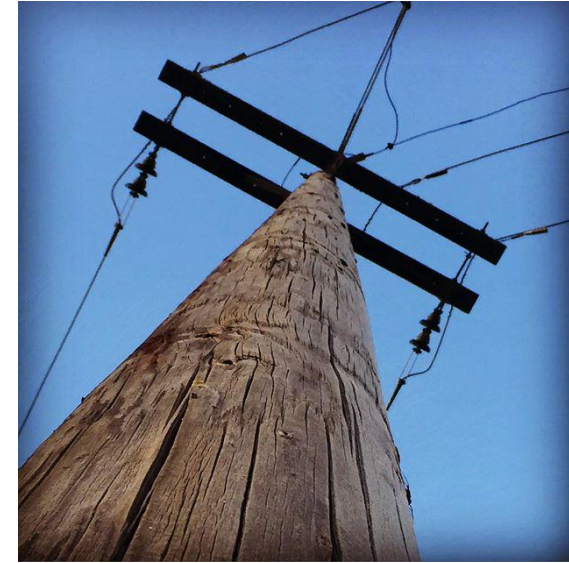


# Oregon Department of **ENERGY**

Heppner Wind Project  
Notice of Intent  
Informational Meeting

August 12, 2025  
Willow Street  
Innovation Hub  
Heppner, OR



5:30 PM - Meet and Greet and  
1:1 conversations with ODOE  
and Applicant

6:00 PM – Presentations then  
Q&A/Comment

# AGENDA

---

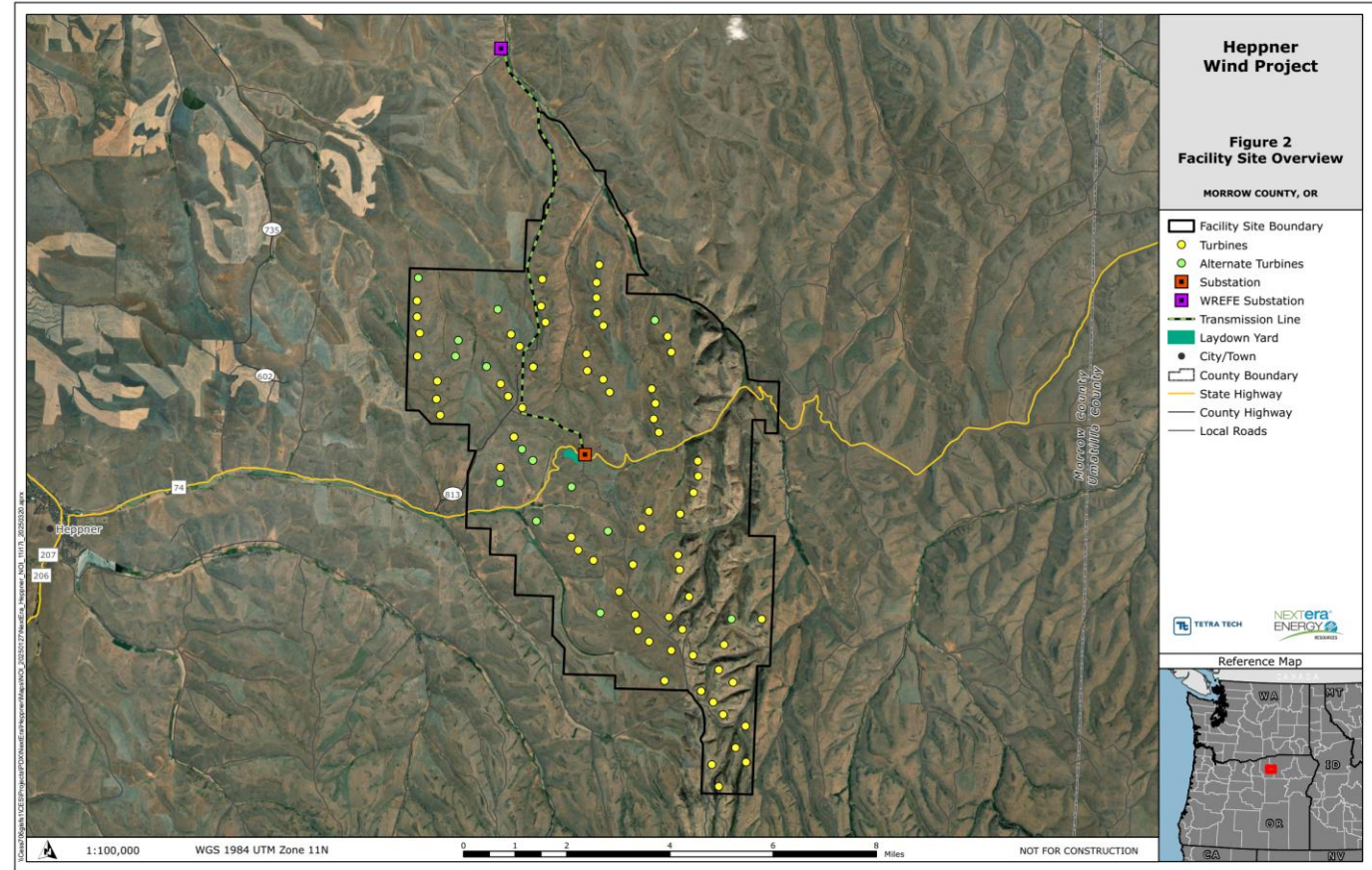
- Meeting Overview
- Siting Process Overview (ODOE)
- Proposed Facility Overview (Applicant)
- Questions and Comments

# Meeting Overview

The Heppner Wind Project is a proposed 190 MW wind power generation facility that would include:

- Up to 67 wind turbines with a maximum blade-tip height of 640 feet
- 11 miles of overhead 230kV transmission line, and
- Other related or supporting facilities.

The proposed site includes approximately 31,477 acres of private land in Morrow County.





# Meeting Overview

---

This informational meeting:

- Is intended to give members of the public an opportunity to learn about the proposal and provide comment on the NOI.
- Is **not** a contested case hearing, and participation in the meeting is not required to preserve issues or standing for the contested case.

Please hold all questions and comments until the Q&A session at end of the presentations. Commenters will be subject to time limits in order to allow all who may want to comment, to make comments tonight.

Any person engaging disruptive behavior may be asked or required to leave the meeting.

# Oregon's Energy Facility Siting Program

## Who We Are

Oversees review, decision-making, and compliance for most large-scale energy-generating facilities and infrastructure in Oregon.

- Energy Facility Siting Council (EFSC) is decision-making authority.
- Oregon Department of Energy (ODOE), Siting Division serves as staff to EFSC.

## What We Do

Consolidated process between state agencies and local government:

- Eliminates duplication, consolidates timelines, decisions, and judicial review
- Reviews proposal for compliance with applicable standards, laws, and rules.
- Provides opportunities for public participation and comment.
- Coordinates review and solicits input from reviewing agencies, local governments, and tribal governments.

# State Jurisdictional “Energy Facilities” ORS 469.300(11)(a)

Under ORS 469.300(11)(a) and 469.320 a site certificate is generally required for:

- Electric power generating plants with a nominal generating capacity of:
  - 25 MW or more, for thermal or combustion turbine power plants
  - 55.5 MW or more for geothermal plants
  - **150 MW or more for wind power generating facilities\***
- Solar photovoltaic power generation facilities using more than:
  - 240 acres of high-value farmland
  - 2,560 acres of cultivated or arable land; or
  - 3,840 acres of any other land.
- High voltage transmission lines more than 10 miles in length and located in more than one city or county
- Certain fuel and geothermal pipelines, LNG storage facilities, and surface facilities related to underground gas storage reservoirs
- High capacity synthetic and biofuel production plants



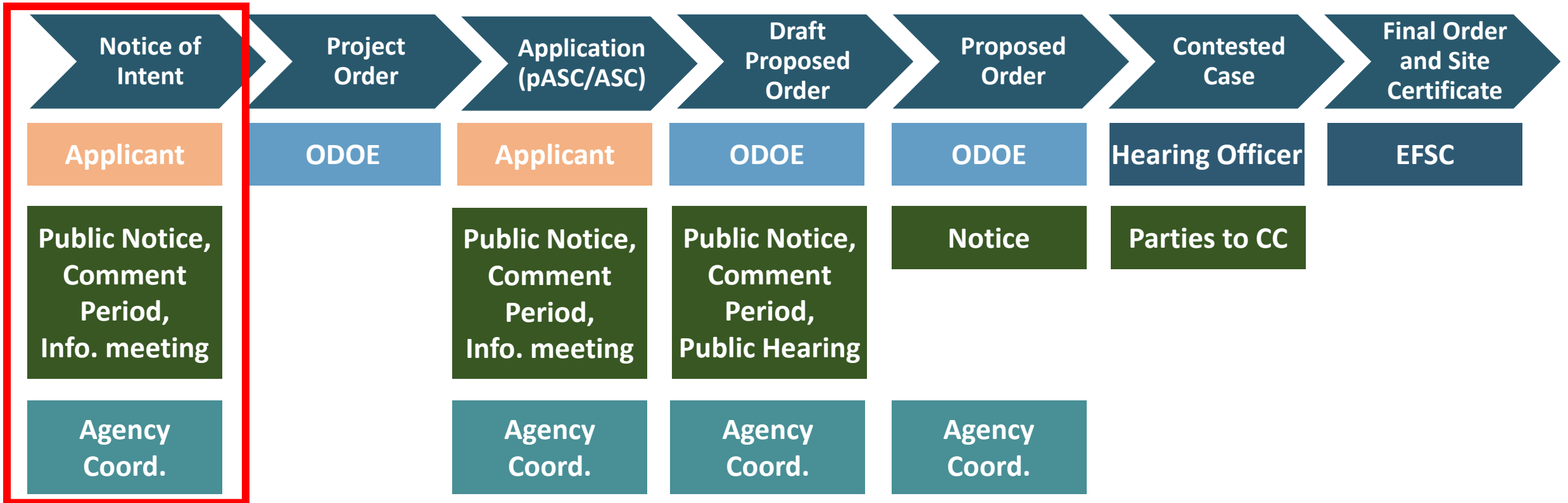
# Proposed Facility

---

- The proposed 190 MW wind facility would be an “energy facility” under ORS 469.300. As such, the applicant must obtain a Site Certificate before it may construct or operate of the proposed facility.
- To obtain a site certificate the applicant must demonstrate that the proposed facility meets the standards established by the Council in OAR chapter 345, other applicable Oregon statutes, rules and standards, and Oregon’s land use planning goals.
- Submitting the NOI is the first step in the process of obtaining a site certificate.
- ODOE serves as staff to the Council and conducts much of the application review process.

# ENERGY FACILITY SITING PROCESS

## Application for Site Certificate Process



**WE ARE HERE**



# Reviewing Agency Coordination

---

## **Reviewing Agencies, Tribal Governments, and Special Advisory Groups:**

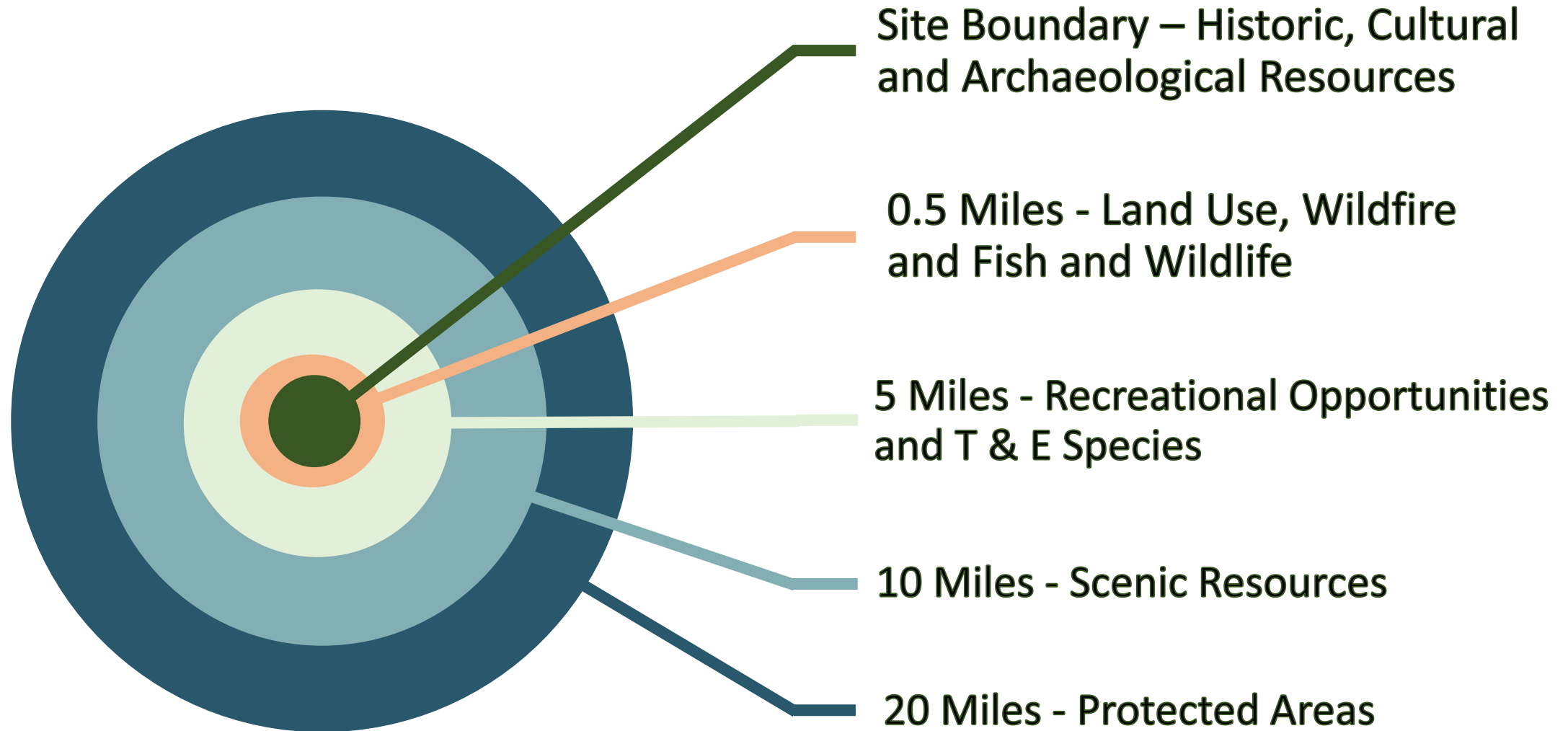
- Provide comments on the proposed facility within the jurisdiction or expertise of the agency
- Make recommendations regarding the size and location of analysis area(s)
- Identify:
  - Studies that should be conducted to identify potential impacts
  - Statutes, administrative rules, applicable substantive criteria, and local government ordinances administered by the agency
  - Permits administered by the agency that might apply to construction or operation of the proposed facility

# Energy Facility Siting Process

## EFSC Siting Standards:

- **General Standard of Review**
- **Organizational Expertise**
- **Structural Standard**
- **Soil Protection**
- **Land Use**
- **Protected Areas**
- **Retirement and Financial Assurance**
- **Fish and Wildlife Habitat**
- **Threatened and Endangered Species**
- **Scenic Resources**
- **Historic, Cultural and Archaeological Resources**
- **Recreation**
- **Public Services**
- **Waste Minimization**
- **Wildfire Prevention and Risk Mitigation**
- **Noise**
- **Siting Standards for Transmission Lines**
- **Need Standard**

# NOI Study Area Distances



# Land Use

---

- The applicant may choose to obtain land use approval from EFSC or from the affected local governments.
- NOI indicates applicant intends to seek land use determination from EFSC
- If election changes, interested persons should participate in the local land use process.

# Public Comment Period

---

- Opportunity for the public to comment on the Notice of Intent is Open. All written comments submitted to ODOE are included in the public record and provided to the applicant.
- Comment period closes on **August 22, 2025, at 5:00 PM Pacific Time.**
- Comments can be submitted in writing at this meeting, via mail to [christopher.clark@energy.oregon.gov](mailto:christopher.clark@energy.oregon.gov), or through our comment portal available at:  
<https://odoe.powerappsportals.us/en-US/SitingPublicComment/>
- Details on how to comment are in the Public Notice on the facility webpage:  
<https://www.oregon.gov/energy/facilities-safety/facilities/Pages/HWPP.aspx>
- **Note:** This meeting is not a public hearing, and participation is not required to establish standing to participate during the review of the Application for Site Certificate. in the contested case







# Heppner Wind Project

Public Informational Meeting on the Notice of Intent to Apply  
for a Site Certificate

August 12, 2025

**Heppner Lena Wind, LLC**

**Local Investment. Jobs. Clean Energy.**

# NextEra Energy is powered by two industry-leading companies, strengthened by a common platform

~\$238 B Enterprise Value<sup>1</sup>



~74 GW in Operations<sup>2</sup>



Largest electric utility  
in the U.S.



A leading North American  
energy company

 Renewables and Storage

 Fossil Generation

 Supply Chain

 Power Delivery & Transmission

 Nuclear Operations

 Engineering & Construction

 Market Knowledge

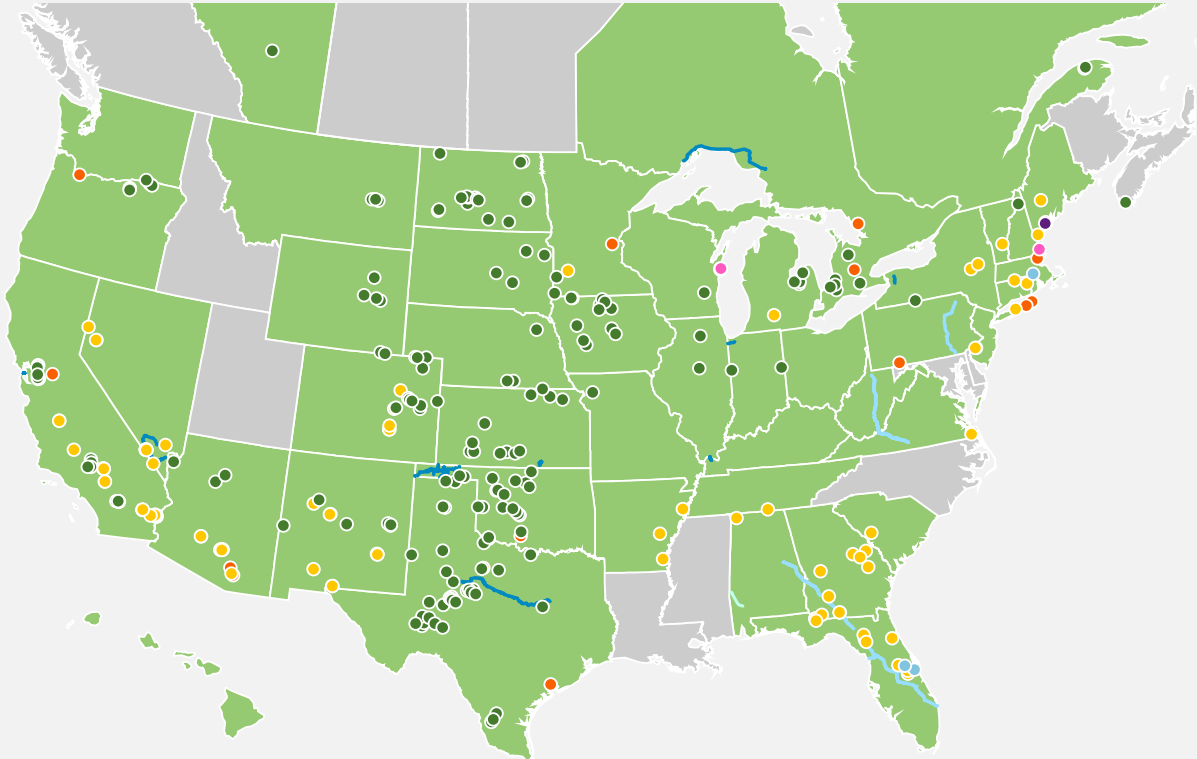
 Data, Analytics & Innovation

 Balance Sheet

1. As of March 31, 2025

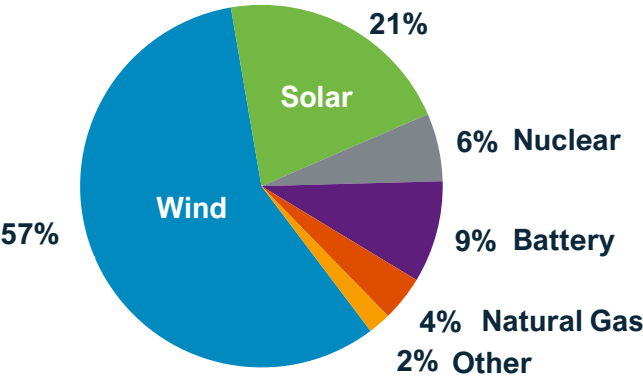
2. FPL and NextEra Energy Resources portfolio as of March 31, 2025; includes XPLR Infrastructure's portfolio reflected at NextEra Energy's ownership share

# NextEra Energy Resources is the leading North American clean energy company



- Battery Storage
- Universal Solar
- Natural Gas
- Pipeline
- State with Project in Operation
- Wind
- Nuclear
- Transmission
- Other

~38 GW<sup>1</sup> of generation and storage in operation



World leader in wind, solar and storage



~28 GW<sup>2</sup> backlog and ~300 GW<sup>2</sup> pipeline of renewables and storage



NextEra Energy Transmission is a leading competitive transmission company

Note: Totals may not foot due to rounding  
1. Energy Resources' portfolio as of March 31, 2025; includes XPLR Infrastructure's portfolio reflected at NextEra Energy's ownership share  
2. Backlog as of April 23, 2025, pipeline as of March 18, 2025

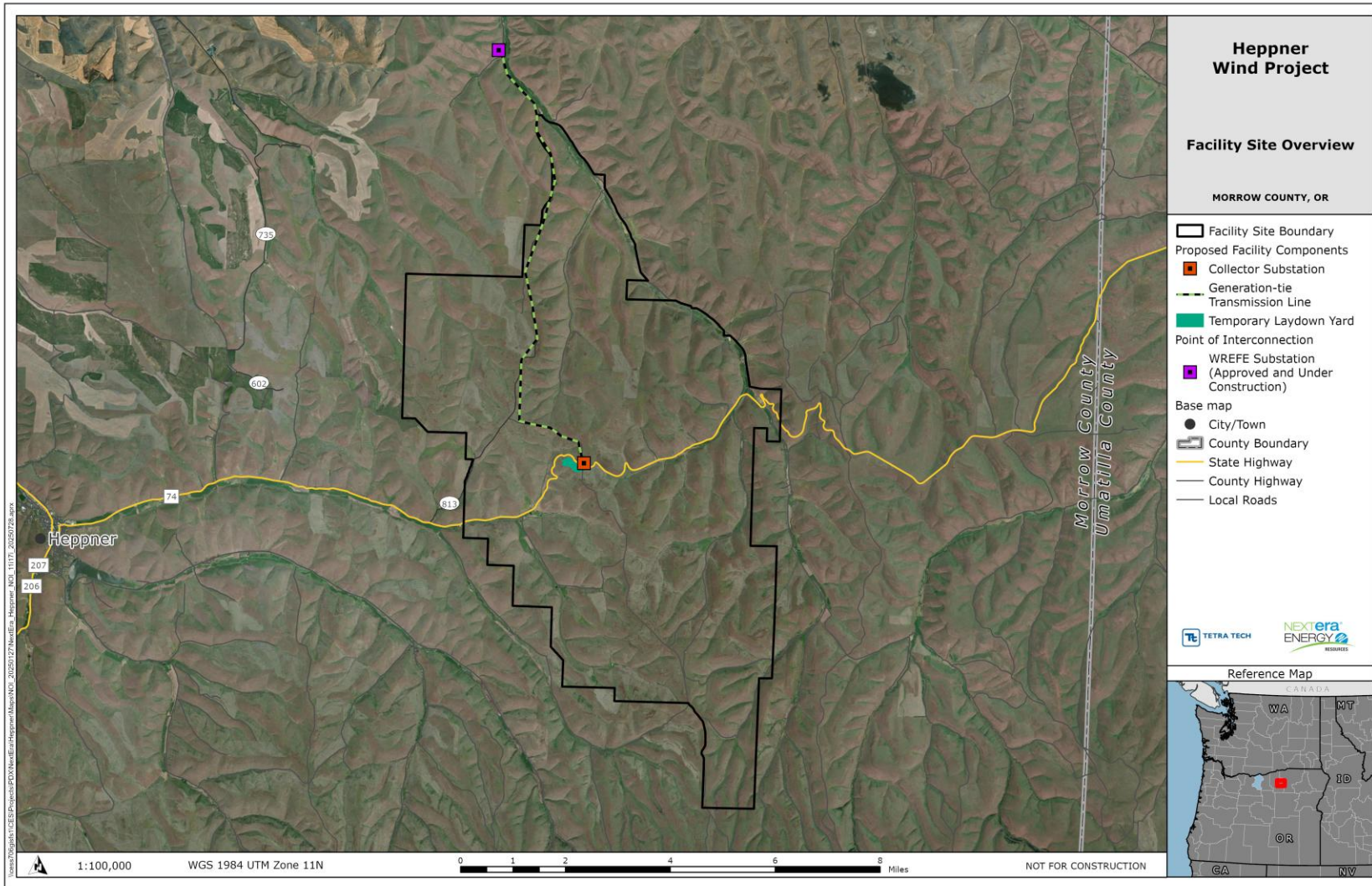
# Project Team

## ► NextEra Team

- » Ryan Hill - Project Director, Development
  - › [Ryan.Hill@NextEraEnergy.com](mailto:Ryan.Hill@NextEraEnergy.com)
- » Sarah Jaberl – Senior Project Manager, Development
- » Sara Twitchell - Environmental Services Permitting Manager
- » Cameron Curtis - Senior Environmental Specialist



# Project Location



- ▶ The Facility will be owned and operated by a subsidiary of NextEra Energy Resources, LLC
- ▶ Located in Morrow County, 6 miles east of Heppner, Oregon
- ▶ Sited on private property to minimize impacts to cultivated land and sensitive environmental resources
- ▶ Point of interconnection with the Wheatridge Renewable Energy Facility East Substation



# Supporting Facilities

- ▶ Collection system
- ▶ Collector substation
- ▶ O&M building
- ▶ Generation-tie transmission line
- ▶ Meteorological towers
- ▶ Communication and SCADA system
- ▶ Site access and service roads
- ▶ Perimeter fencing and gates
- ▶ Temporary laydown yard

» **NOTE:** Project layout and design is under development

# Project Development Timeline Overview

## ► Resource Studies

- » Raptor Nest Surveys
- » Wetlands and Waters Surveys
- » Habitat Categorization Surveys
- » WAGS and General Wildlife Surveys
- » Botanical Surveys
- » Bat Acoustic Monitoring
- » Avian Use Surveys
- » Eagle Use Surveys
- » Cultural Resources Surveys

## ► Permitting – 2026

- » Oregon Department of Energy (ODOE), Energy Facility Siting Council (EFSC)

## ► Construction start – TBD

# Agency and Stakeholder Outreach

- ▶ Community Feedback
- ▶ Tribal Outreach
- ▶ ODFW
- ▶ ODOE
- ▶ City of Heppner
- ▶ Morrow County Planning Department // Public Works
- ▶ Socioeconomic Impacts
- ▶ Economic Support and Development
- ▶ Fire and Emergency Response
- ▶ Weed Control and Erosion

# ► Questions

# ► Appendix











# Q&A Session/Comments

## We will call on you

**In Person**: Please complete a comment card with your name and contact information and hand it to Nancy.

**Webinar Participants**: The bottom right of the main window is a set of icons.

Click on “Participants”

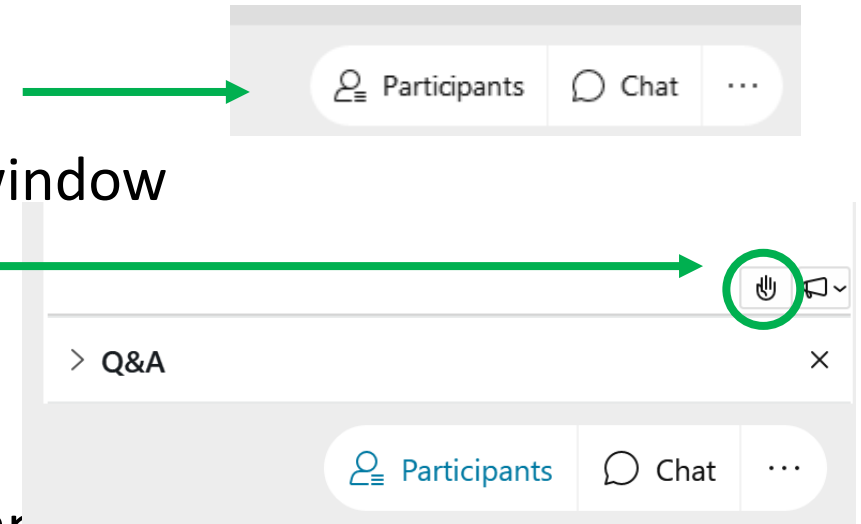
Click on the hand icon in bottom right of the participant window

Clicking on it again will lower your hand.

**Phone Participants**: We will call on you

Press \*3 on your telephone keypad to raise your hand.

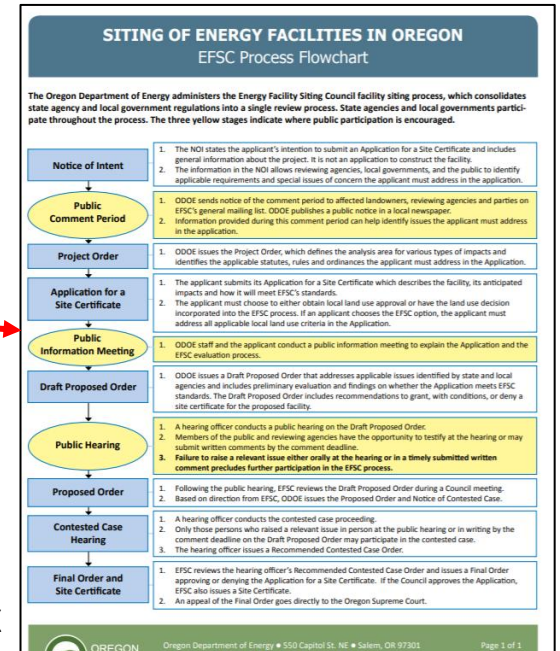
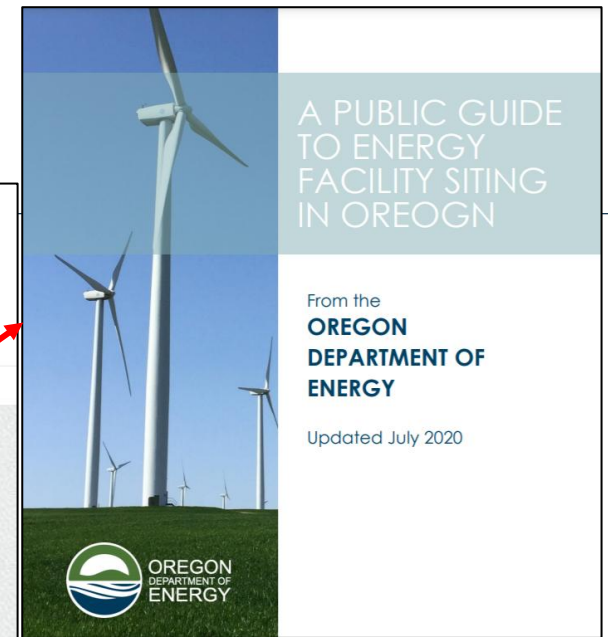
Press \*3 again on your telephone keypad to lower your hand.



# Helpful Resources

Oregon Department of Energy / Energy Facilities & Safety / Facilities

## Energy Facility Siting



Home > Siting Public Comment

## Siting Public Comment

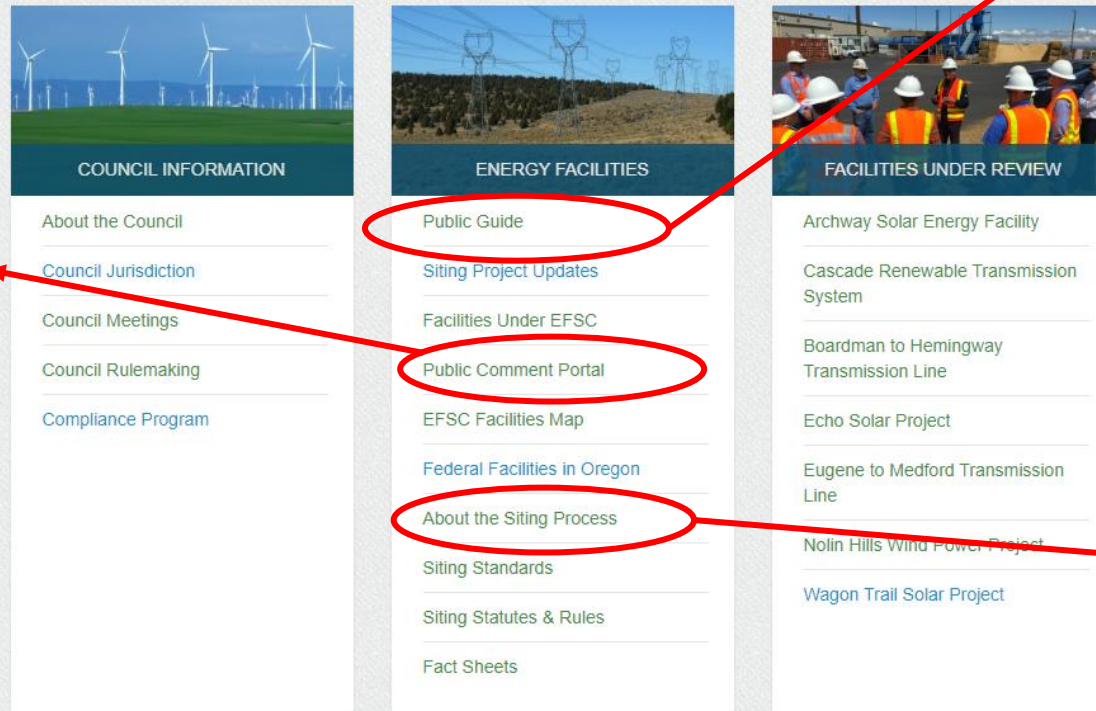
\* Required Field

### Project Selection

Project \*

Please select the project that you are interested in commenting on

Next



<https://www.oregon.gov/energy/facilities-safety/Pages/default.aspx>

<https://www.oregon.gov/energy/facilities-safety/facilities/Pages/HWPP.aspx>

<https://odoe.powerappsportals.us/en-US/SitingPublicComment/>



# ODOE Comment Portal

---

Go to: <https://odoe.powerappsportals.us/en-US/SitingPublicComment/>

Select: “**Heppner Wind Project NOI**” from dropdown menu

Follow: Prompts to create a comment

Create: Enter your comments – 25 MB limit on attachments

Submit: Your comments

You will receive an email confirmation of your submittal

Reminder: Public Comment Closes on **August 22, 2025** at 5:00 PM Pacific Time



# ODOE Contact

---

Chris Clark, Senior Siting Analyst  
Oregon Department of Energy  
550 Capitol St. NE  
Salem, OR 97301  
(503) 871-7254

[christopher.clark@energy.oregon.gov](mailto:christopher.clark@energy.oregon.gov)

Facility Webpage:

<https://www.oregon.gov/energy/facilities-safety/facilities/Pages/HWPP.asp>