

Oregon Department of **ENERGY**

Energy Facility Siting

Saddle Butte Energy Facility Notice of Intent Informational Meeting

January 13, 2026

Veteran's Memorial Hall

Condon, OR

5:30 p.m. - Meet and Greet with ODOE and Applicant

6:00 p.m. - Presentations followed by Q&A/Comments



Agenda

TIME	TOPIC	PRESENTER
5:30 pm	Meet and Greet with ODOE & Applicant	All
6:00 pm	Proposed Saddle Butte Energy Facility Information	Applicant
6:15 pm	Oregon's Energy Facility Siting Program	Chase McVeigh-Walker, Senior Siting Analyst
6:30 pm	Q&A, and Comments	All

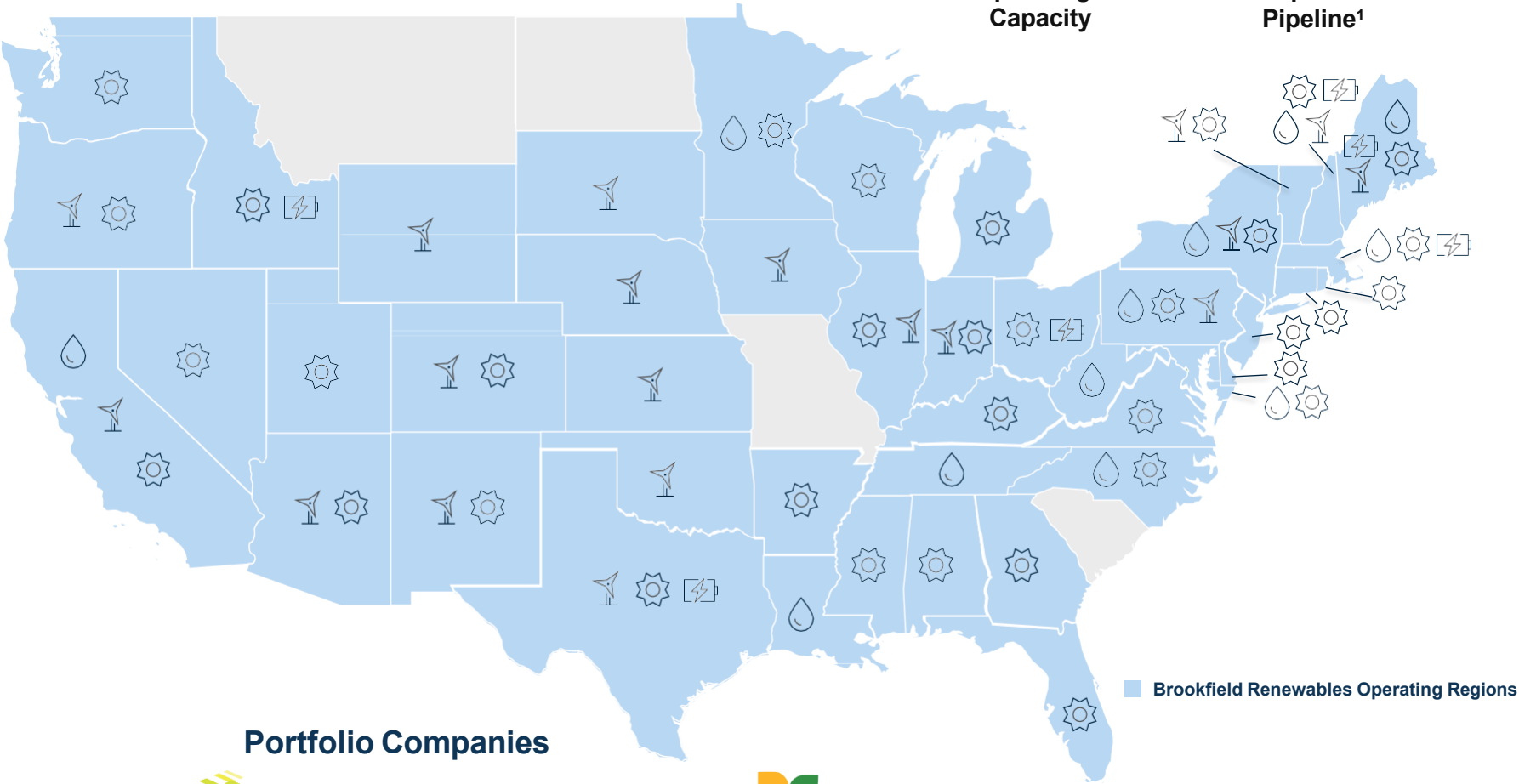
Saddle Butte Energy Facility
Gilliam County, Oregon

JANUARY 13, 2026

**LEADING RENEWABLE ENERGY
PROVIDER IN THE U.S.**

>18_{GW}
Operating
Capacity

>100_{GW}
Development
Pipeline¹

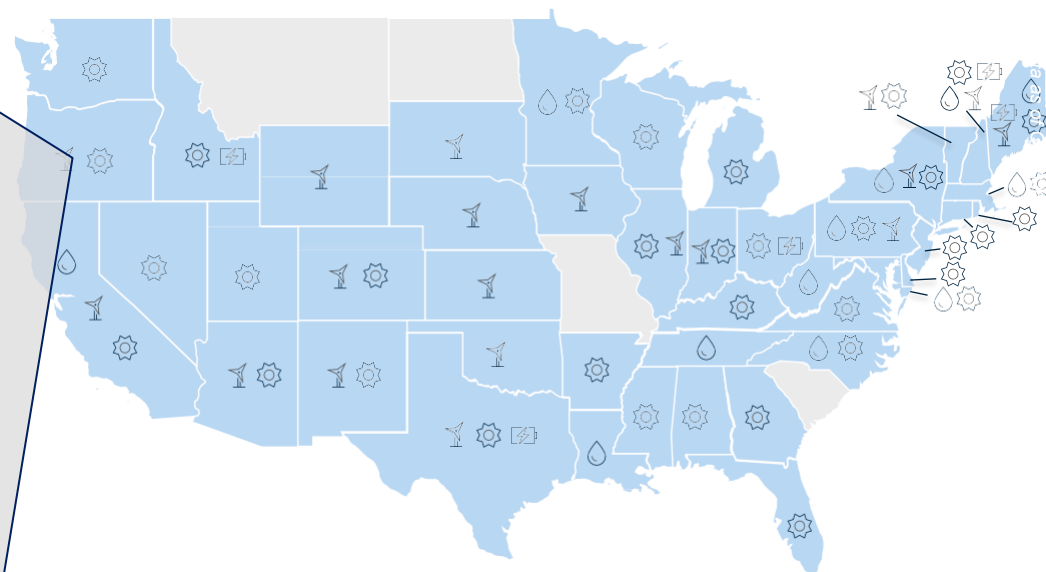


Portfolio Companies

Brookfield
Renewable N.A.



A COMMITTED PARTNER FOR RESPONSIBLE GROWTH IN OREGON



PNW Operational & Development Capacity 3,561 MW

SADDLE BUTTE ENERGY FACILITY: PROJECT SUMMARY

Project Size & Location

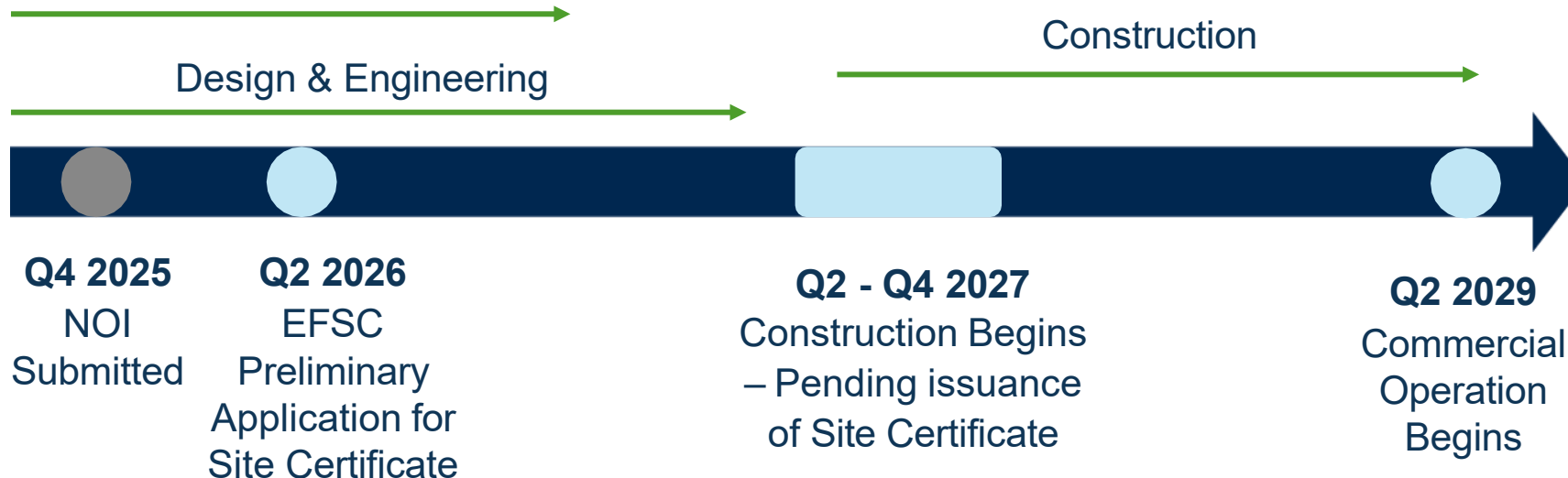
- Located in Gilliam County, OR approximately 7 miles SW of Arlington
- Sited across ~11,500 acres of privately owned land
- Up to 70 wind turbines and 488 MW
- Battery Energy Storage System (BESS) option for up to 488 MW & 4-hr

Interconnection

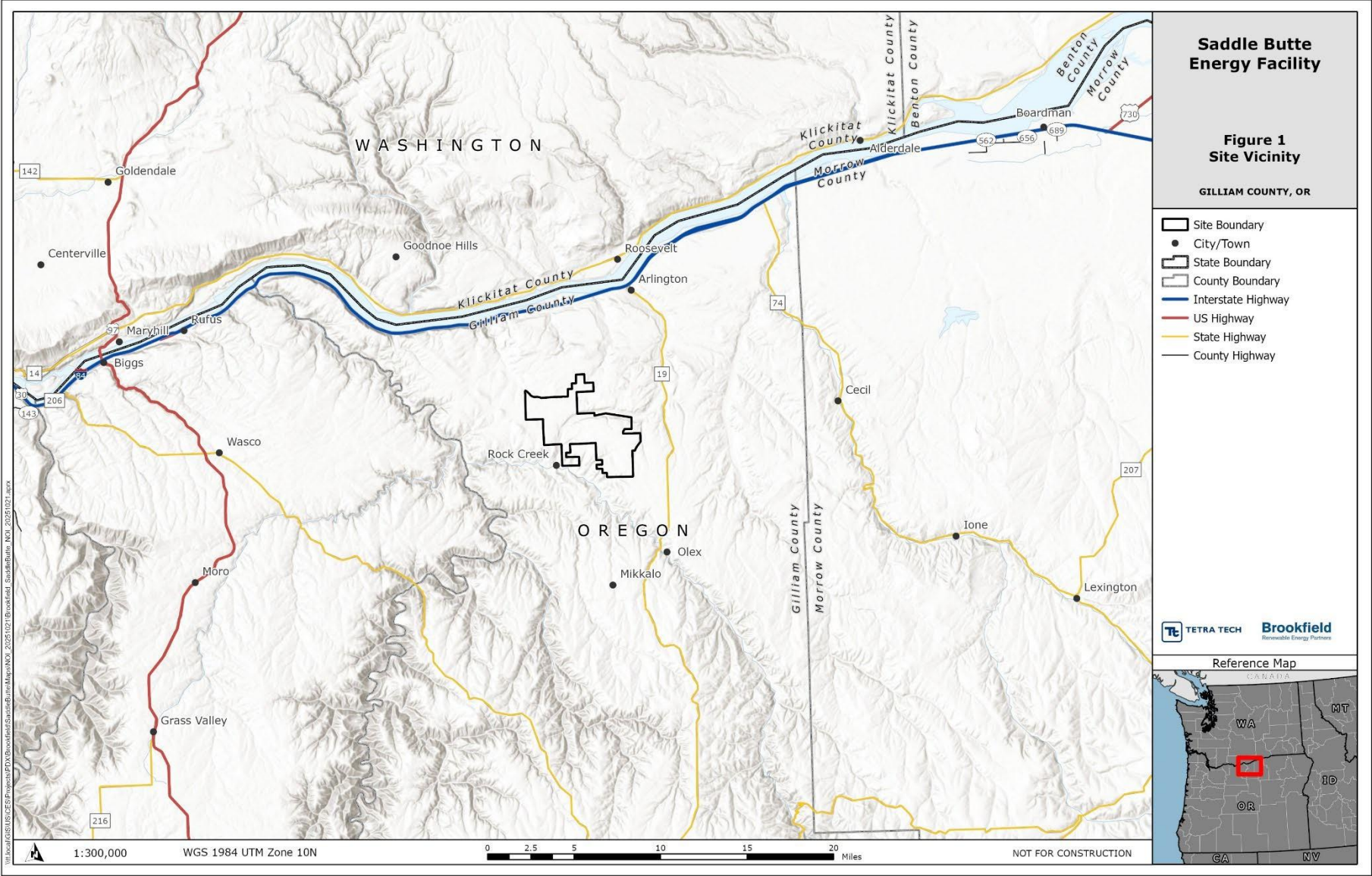
- Connecting to existing BPA 500kV transmission line within the project area via new BPA switchyard
- Project not impacted by queue reform. Executed Engineering and Procurement Agreement with BPA to begin switchyard design and procurement of long-lead equipment

Anticipated Schedule:

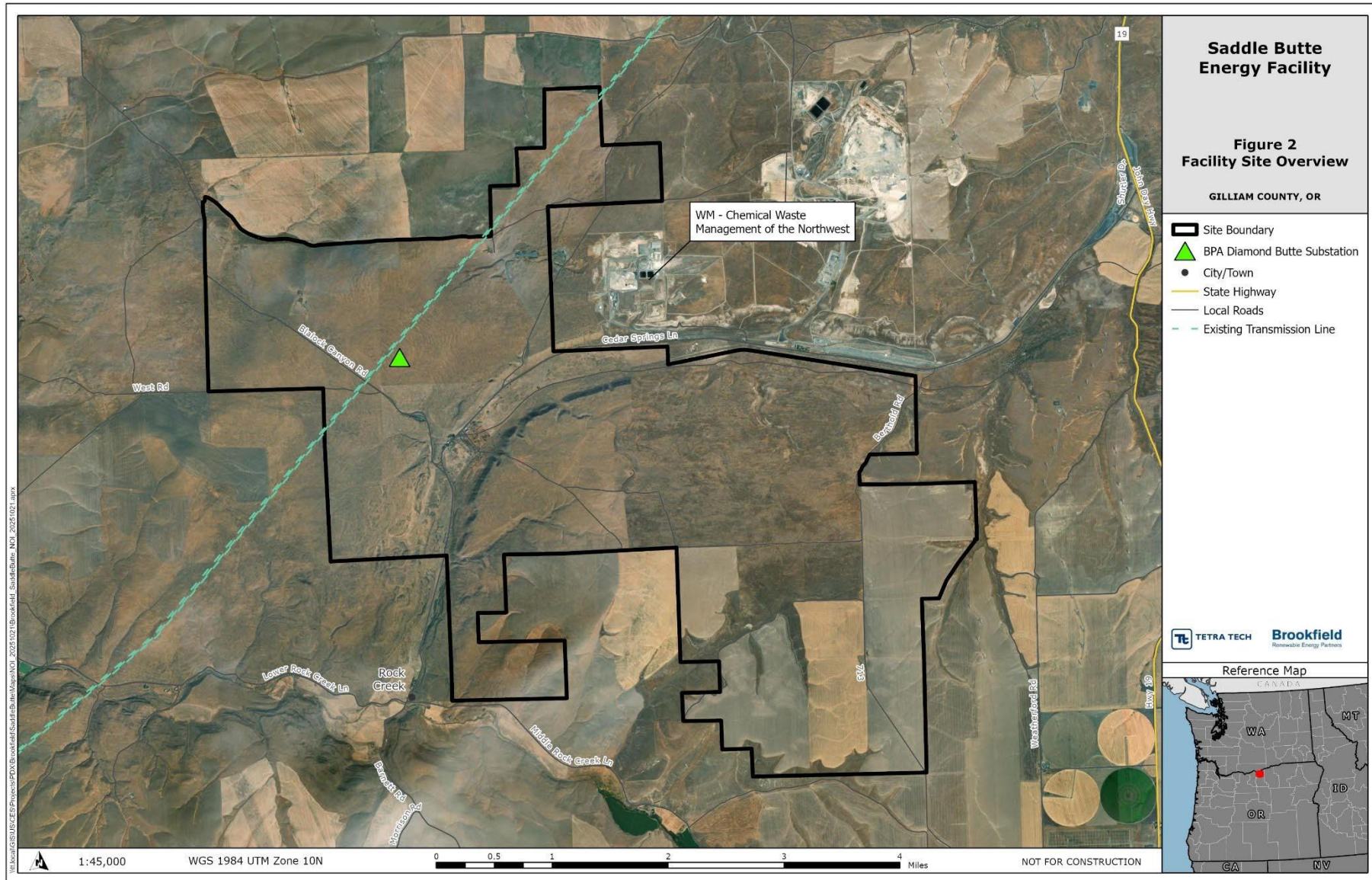
Stakeholder Engagement &
Environmental Studies



REGIONAL MAP



SADDLE BUTTE PROJECT AREA



PROPOSED FACILITY

- Wind Turbines – Up to 70
- Battery Energy Storage System (BESS) – Up to 488 MW x 4-hr
- 2 x collector substations
- 34.5 kV collector cables and fiberoptic cables (mostly underground)
- 230 kV transmission line connecting collector substations (~2.5-mile interior to project area)
- Access & service roads
- Operations & maintenance building
- Temporary construction areas
- Perimeter fencing & gates (for collector substations and BESS)

AGENCY & STAKEHOLDER OUTREACH

- Oregon Department of Fish and Wildlife:
 - Held multiple meetings, study plan review/concurrence and on-site visit
- Gilliam County:
 - Held Pre-NOI meetings with Judge and Commissioners
 - Held in-person meetings with Planning Director and North Gilliam Fire
 - Working with Gilliam County and Business Oregon towards Strategic Investment Program (SIP) agreement
- Cultural:
 - Started early engagement and outreach with state identified tribes, conducted in person meetings, and had tribal participation in cultural surveys

SURVEYS & STUDIES

- Several surveys were completed during 2025 to inform engineering and design; allowing for avoidance and minimization of impact on sensitive resources
- Completed surveys (pending final reports):
 - Raptor Nest Surveys
 - Eagle / Avian Use
 - Bat Acoustic Surveys
 - Washington Ground Squirrel Surveys
 - General Wildlife and Habitat Surveys
 - Wetlands and Waters Delineation
 - Rare Plant Surveys
 - Cultural Resources/Built Environment
- Studies that are ongoing or will be completed following advanced design include geotechnical, sound, visual, economic impact, traffic impact, and emergency service coordination

SADDLE BUTTE ENERGY FACILITY: BESS EXAMPLE



Black Springs BESS (120 MW x 2hrs) – Palo Pinto, TX

Questions/Discussion

Brookfield Renewable N.A.

Berk Gursoy

Vice President, Development

Berk.Gursoy@brookfieldrenewable.com

Ben Mallernee

Sr. Manager, Development

Ben.Mallernee@brookfieldrenewable.com



TETRA TECH

Aaftab Jain

Senior Project Manager

Aaftab.Jain@tetrattech.com

Troy Rahmig

Senior Project Manager

Troy.Rahmig@tetrattech.com



Stoel Rives LLP

Sarah Curtiss

Partner

Sarah.Curtiss@stoel.com

Emily Schimelpfenig

Associate

Emily.Schimelpfenig@stoel.com

Oregon's Energy Facility Siting Program

Who We Are

Oversees review, decision-making, and compliance for most large-scale energy-generating facilities and infrastructure in Oregon.

- Energy Facility Siting Council (EFSC) is the decision-making authority.
- Oregon Department of Energy's (ODOE) Siting Division serves as staff to EFSC.

What We Do

Consolidated process between state agencies and local government:

- Eliminates duplication, consolidates timelines, decisions, and judicial review
- Reviews proposal for compliance with applicable standards, laws, and rules.
- Provides opportunities for public participation and comment.
- Coordinates review and solicits input from reviewing agencies, local governments, and tribal governments.

Application Process for Site Certificate

WE ARE HERE

Notice of
Intent

Project
Order

Application
(pASC/ASC)

Draft
Proposed
Order

Proposed
Order

Contested
Case

Final Order
& Site
Certificate

Applicant

ODOE Siting
Team

Applicant

ODOE Siting
Team

ODOE Siting
Team

Hearing
Officer

EFSC
Decision

Public Notice
Comment
Period
Info. Meeting

Public Notice
Info Meeting

Public Notice
Comment
Period
Public Hearing

Notice

Parties to
Contested Case

Agency
Coordination

Agency
Coordination

Agency
Coordination

Agency
Coordination

Commenting on a Notice of Intent

When: December 30, 2025 – January 30, 2026, at 5 p.m. Pacific Time (deadline)

What: Provide detailed/specific comments related to the proposed facility and risks or impacts to resources protected by an EFSC standard.

Why: Issues and impacts identified in comments provide information for consideration in establishing studies and applicable requirements, and can result in inclusion of important information, evaluation and mitigation in a preliminary Application for Site Certificate/Application for Site Certificate

How: See next slide

How to Submit Comments

Comments can be submitted in writing:

- At this meeting
- Via mail to ODOE's Salem office
- Via email to Siting Analyst Chase McVeigh-Walker at: chase.mcveigh-walker@energy.Oregon.gov
- Through our comment portal available at: <https://odoe.powerappsportals.us/en-US/SitingPublicComment/>

Additional details on how to comment can be found in the Public Notice and on the facility webpage:

<https://www.oregon.gov/energy/facilities-safety/facilities/Pages/SBEF.aspx>

How to Use ODOE Comment Portal

- Go To: <https://odoe.powerappsportals.us/en-US/SitingPublicComment/>
- From the drop-down menu select “Saddle Butte Energy Facility NOI”
- Follow the prompts to create a comment
- Submit your comments

You will receive an email confirmation of your submittal.

Reminder: Public Comment Period Closes on January 30, 2026, at 5 p.m. Pacific Time

What happens to your comments?

- Provided to applicant for review/consideration
- Evaluated by the ODOE; discussed with reviewing agencies, tribal governments and special advisory group (local government), as applicable, to establish requirements
- If comments identify issues or resources within EFSC jurisdiction, provide sufficient detail, and are not already existing requirements, the Project Order may require an evaluation or study related to the comment.

Q&A Session & Comments

We will call on you

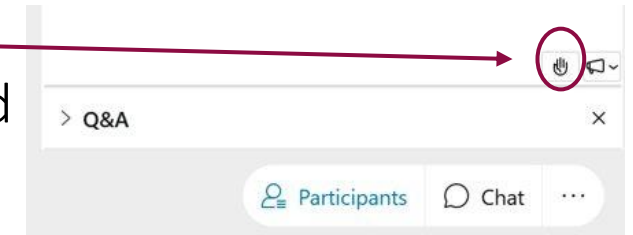
In Person: Please complete a comment card with your name and contact information and hand it in to ODOE staff

Webinar Participants: At the bottom right of the main window is a set of icons.

Click on “Participants”



Click on the hand icon in bottom right of the participant window



Clicking on it again will lower your hand

Phone Participants: We will call on you

Press *3 on your telephone keypad to raise your hand

Press *3 again on your telephone keypad to lower your hand

Helpful Resource Links

Energy Facility Siting Website: <https://www.oregon.gov/energy/facilities-safety/facilities/Pages/default.aspx>

EFSC Public Guide: <https://www.oregon.gov/energy/facilities-safety/facilities/Documents/Fact-Sheets/EFSC-Public-Guide.pdf>

EFSC Siting Standards: <https://www.oregon.gov/energy/facilities-safety/facilities/Pages/Siting-Standards.aspx>

ORESA Mapping Tool: <https://www.oregon.gov/energy/energy-oregon/Pages/ORESA.aspx>

Facilities Under EFSC: <https://www.oregon.gov/energy/facilities-safety/facilities/Pages/Facilities-Under-EFSC.aspx>

EFSC Comment Portal: <https://odoe.powerappsportals.us/en-US/SitingPublicComment/>



OREGON
DEPARTMENT OF
ENERGY



Thank you

Email questions to: chase.mcveigh-walker@energy.oregon.gov