

# Oregon Department of **ENERGY**

## Energy Facility Siting

### Speedway Energy Facility Notice of Intent Informational Meeting

January 14, 2026  
Grass Valley Pavillion  
Grass Valley, OR

5:30 p.m. - Meet and Greet with ODOE and Applicant  
6:00 p.m. - Presentations followed by Q&A/Comments



# Agenda

TIME	TOPIC	PRESENTER
5:30pm	Meet and Greet with ODOE & Applicant	All
6:00pm	Proposed Saddle Butte Energy Facility Information	Developer
6:20pm	Oregon's Energy Facility Siting Program	Chase McVeigh-Walker, Senior Siting Analyst
6:40pm	Q&A, and Comments	All



---

## Speedway Energy Facility Sherman County, Oregon

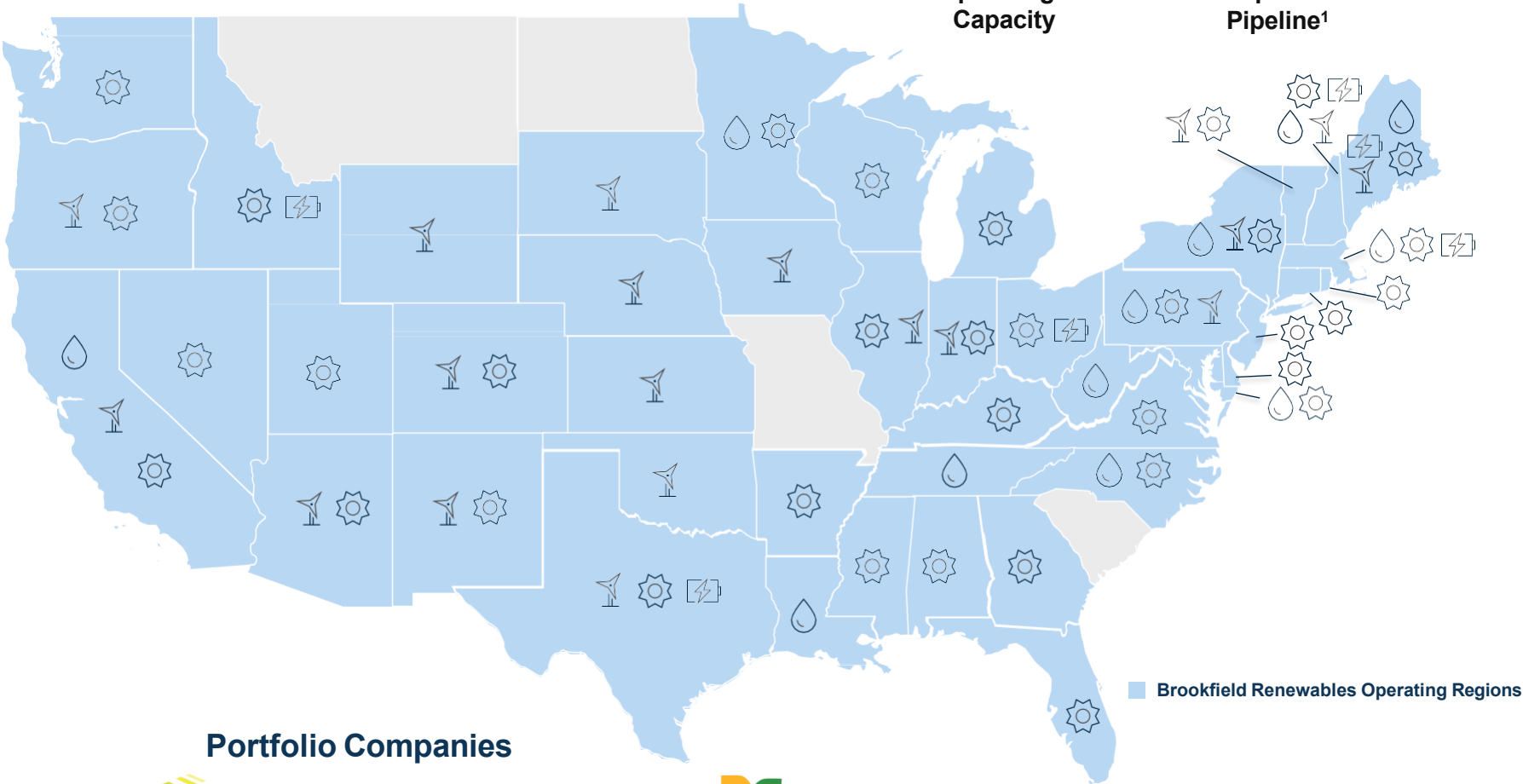
---

JANUARY 14, 2026

**LEADING RENEWABLE ENERGY PROVIDER IN  
THE U.S.**

**>18<sub>GW</sub>**  
Operating  
Capacity

**>100<sub>GW</sub>**  
Development  
Pipeline<sup>1</sup>



**Portfolio Companies**

**Brookfield**  
Renewable N.A.

**URBAN GRID**  
A Brookfield Renewable Company

**Luminance**  
By Brookfield Renewable

**STANDARD SOLAR**

**TerraFORM**  
POWER  
a Sun-Edison company

**geronimo**  
power

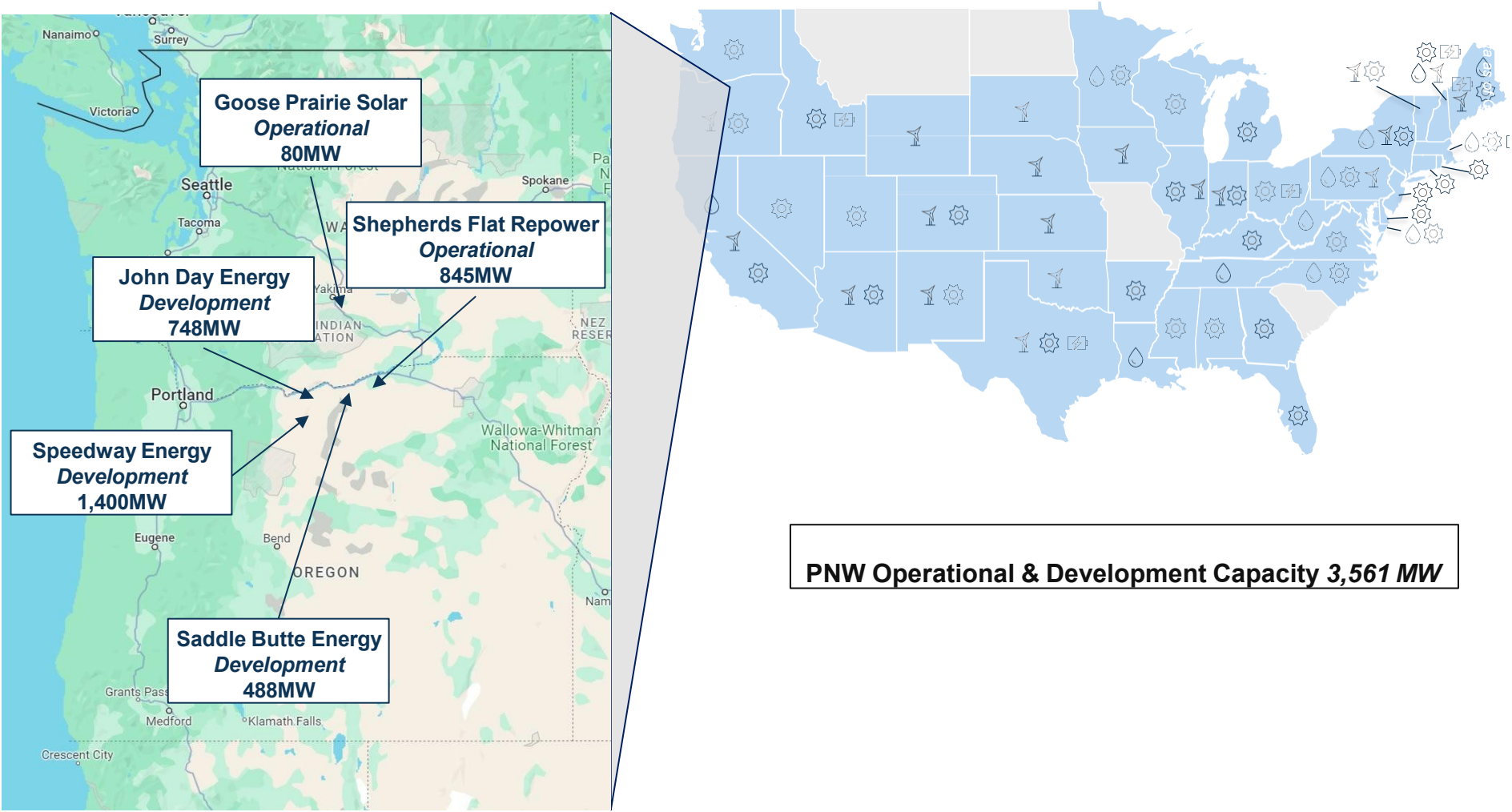
**X-ELI+**

**SCOUT**  
CLEAN ENERGY

**Deriva**  
Energy



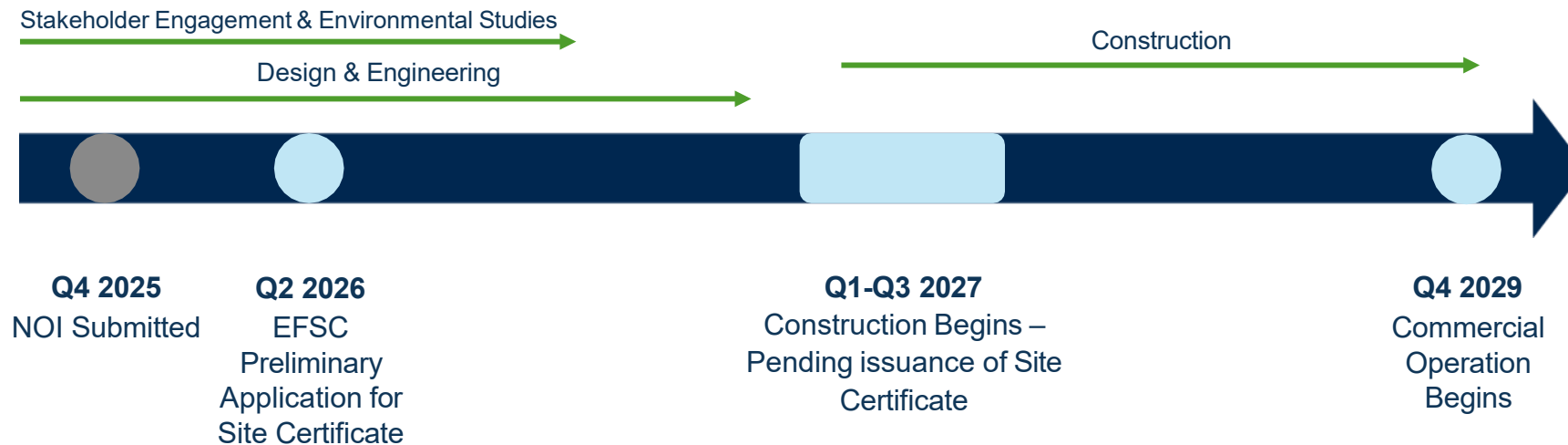
# A COMMITTED PARTNER FOR RESPONSIBLE GROWTH IN OREGON



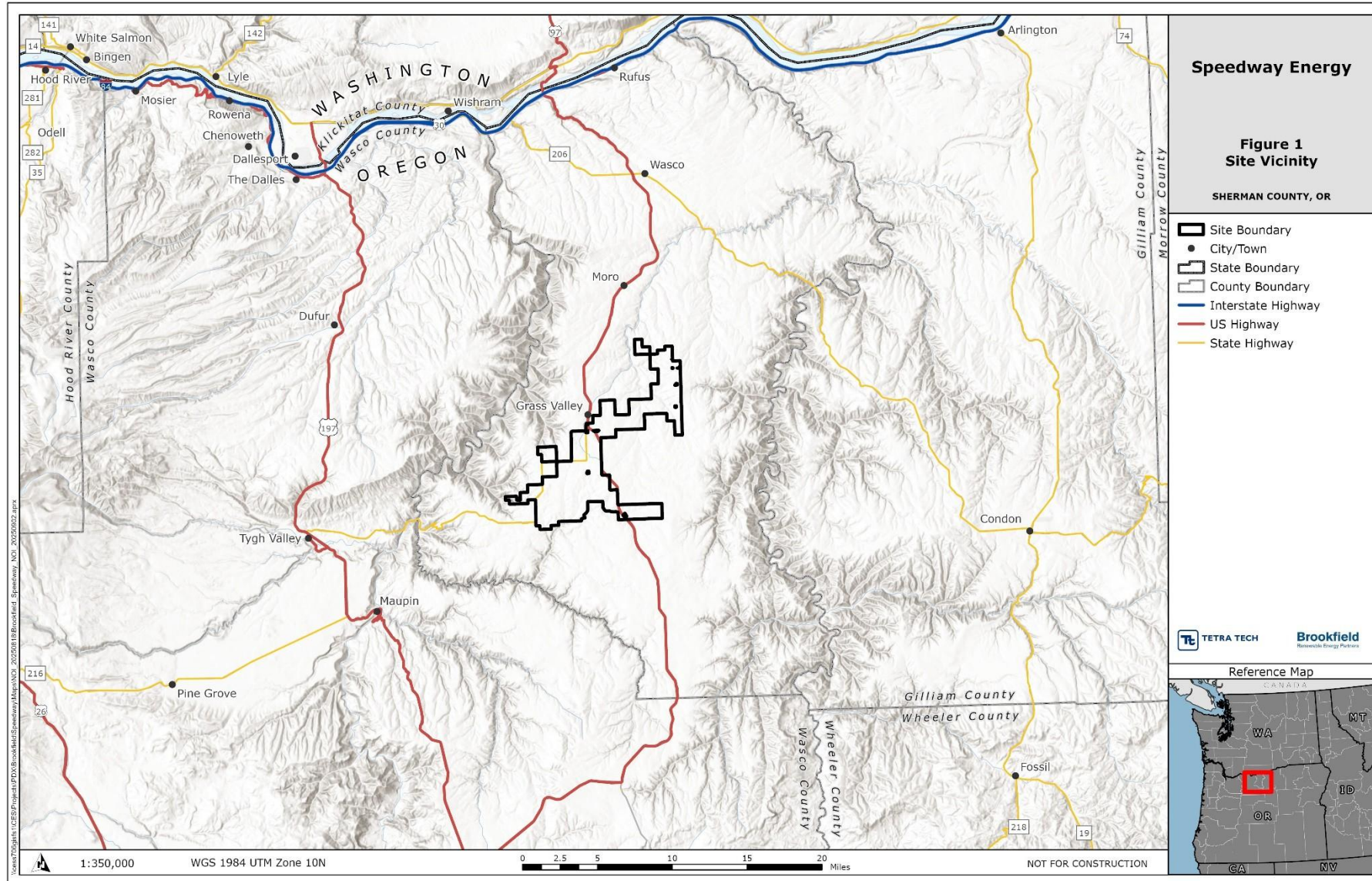
# SPEEDWAY ENERGY FACILITY: PROJECT SUMMARY

Project Size & Location	Interconnection
<ul style="list-style-type: none"><li>• Located in Sherman County, OR directly Northeast and Southwest of Grass Valley</li><li>• Sited across ~25,000 acres of privately owned land</li><li>• Up to 1400MW of solar and up to 100 wind turbines</li><li>• Battery Energy Storage System (BESS) option for up to 500 MW &amp; 4-hr</li></ul>	<ul style="list-style-type: none"><li>• Connecting to existing BPA 500kV transmission line within the project area via new BPA switchyard</li><li>• Project not impacted by queue reform. Executed Engineering and Procurement Agreement with BPA to begin switchyard design and procurement of long-lead equipment</li></ul>

## Anticipated Schedule:

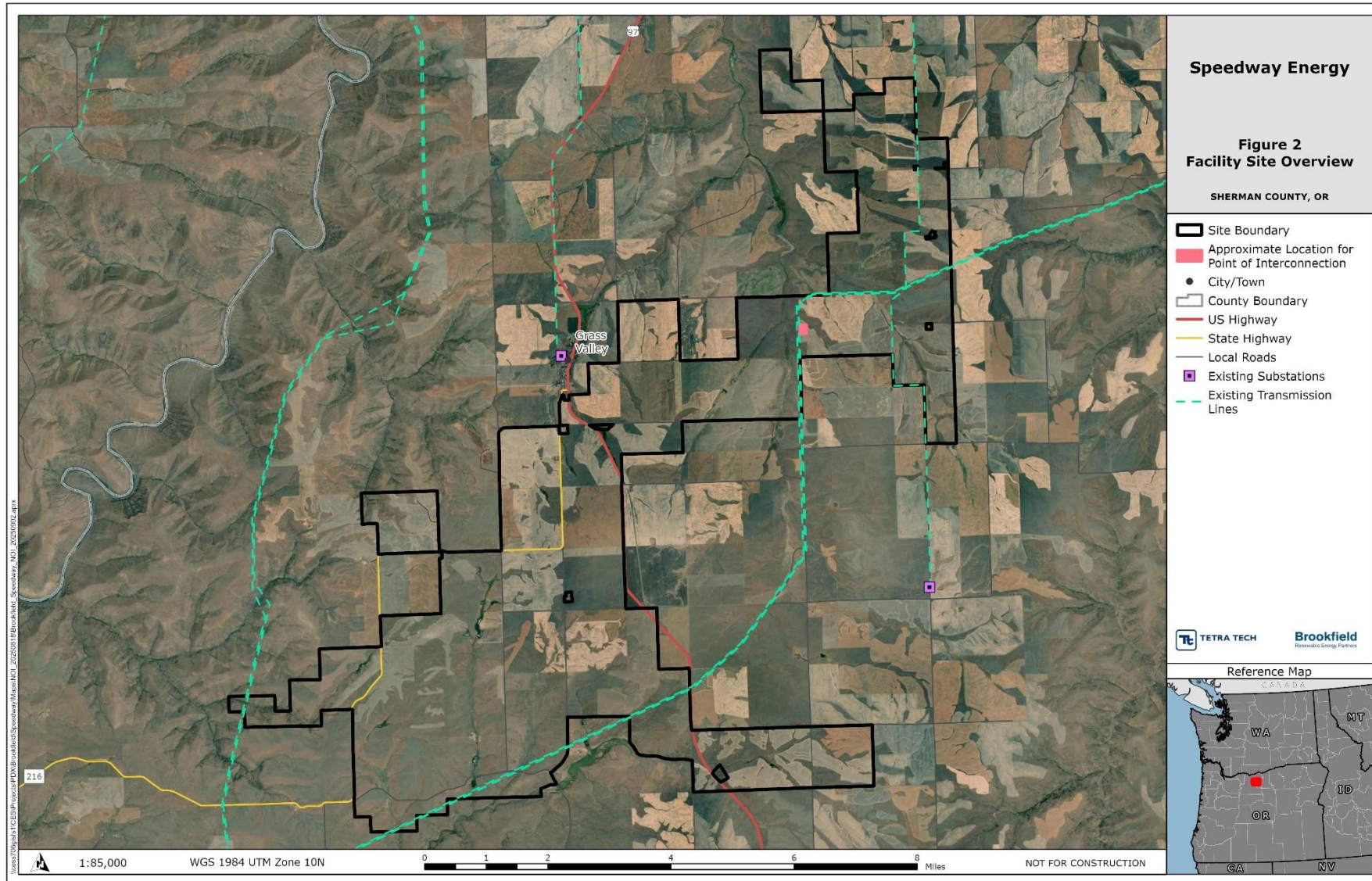


# SPFFDWAY ENERGY FACILITY





# SPEEDWAY ENERGY FACILITY : OVERVIEW MAP





# PROPOSED FACILITY

---

- Solar – Up to 1400MWac
- Wind Turbines – Up to 100
- Battery Energy Storage System (BESS) – Up to 500 MW x 4-hr
- Continuing to refine the exact composition of wind and solar generation and battery storage
- 6 x collector substations
- 34.5 kV collector cables and fiberoptic cables (mostly underground)
- 230 kV transmission line connecting collector substations
- Access & service roads
- Operations & maintenance building
- Temporary construction areas
- Perimeter fencing & gates (for collector substations and BESS)

## Cultural

- Project notifications sent to Confederated Tribes of the Umatilla Indian Reservation, Confederated Tribes of the Warm Springs Reservation of Oregon (CTWSRO), the Nez Perce, the Yakama Nation, and the Burns Paiute Tribe.
- Contracted with Geo Visions (a CTWSRO Tribal enterprise) to complete surveys and ethnographic studies for identification of Historic Properties of Religious or Cultural Significance to Indian Tribes (HPRCSIT)

## Agency Outreach

- ODFW –
  - Met to discuss required biological surveys and proposed survey methods
  - Scheduling follow-up in Q1 to review survey results and habitat mitigation
- ODOT –
  - Met to discuss project overview, construction timelines, road crossing needs, and transportation planning
- BPA –
  - Ongoing meetings for planning, design, and funding of interconnection switchyard

## Stakeholder Engagement

- Hubbell Communication supporting Speedway team with stakeholder engagement planning and community outreach
- Recent County meetings – Soil and Water Conservation District, South Sherman Fire Dept, Emergency Services, County Judge, Assessor's office, Planning Office, Road Master

## SPEEDWAY ENERGY FACILITY: COMPLETED SURVEYS

---

- Raptor Nest Surveys – April/May 2023 and 2025
- Eagle/Avian Use – 2024 thru March 2027
- Bats – April 2025 thru November 2025
- General Wildlife and Habitat Surveys – May-July 2024 and July 2025
- Wetlands and Waters Delineation – May/June 2024, June 2025
- Submitted results to Oregon Department of State Lands in Dec '25
- Rare Plant Surveys – July 2024 and 2025
- Cultural Resources/Built Environment – Spring/Summer 2024 and 2025



## SPEEDWAY ENERGY FACILITY: FIRE PREVENTION AND PLANNING

- Collaborating with local fire authorities and energy industry experts to identify fire risks and integrate mitigation strategies into project design, construction, and operations
  - Coordinating with local fire districts on wildfire risk assessment, emergency response planning, and project-specific requirements.
  - Designing project layout to include fire breaks and on-site water storage to support firefighting and emergency response needs.
  - A comprehensive Emergency Response Plan, including wildfire scenarios and coordination protocols with local agencies, will be developed ahead of construction commencement.
  - Engaging nationwide fire and Battery Energy Storage System (BESS) consultants to assess wildfire risks, advise on design, and support emergency training and planning efforts.
  - Design will consider full compliance with all applicable fire safety codes and standards, including the Oregon Fire Code, Oregon Administrative Rules, National Fire Protection Association (NFPA) standards, and the National Electrical Code (NEC).

## SPEEDWAY ENERGY FACILITY: SOLAR EXAMPLE



Goose Prairie Solar Project – Yakima, WA



## SPEEDWAY ENERGY FACILITY: WIND EXAMPLE



Shepards Flat Wind Farm – Arlington, OR



## SPEEDWAY ENERGY FACILITY: BESS EXAMPLE



Black Springs BESS (121MW) – Palo Pinto, TX

## SPEEDWAY ENERGY FACILITY: CONTACTS

**Brookfield**  
Renewable U.S.



**John Soininen**  
Vice President, Solar  
[John.Soininen@brookfieldrenewable.com](mailto:John.Soininen@brookfieldrenewable.com)

**Berk Gursoy**  
Vice President, Wind & BESS  
[Berk.Gursoy@brookfieldrenewable.com](mailto:Berk.Gursoy@brookfieldrenewable.com)

**Vince Esposito**  
Sr. Manager, Asset Development  
[Vincent.Esposito@brookfieldrenewable.com](mailto:Vincent.Esposito@brookfieldrenewable.com)



**Paul Seilo**  
Senior Project Manager  
[Paul.Seilo@tetratech.com](mailto:Paul.Seilo@tetratech.com)

**Troy Rahmig**  
Senior Project Manager  
[Troy.Rahmig@tetratech.com](mailto:Troy.Rahmig@tetratech.com)



**Tim McMahan**  
Partner  
[Tim.Mcmahan@stoel.com](mailto:Tim.Mcmahan@stoel.com)

**Emily Schimelpfenig**  
Associate  
[Emily.Schimelpfenig@stoel.com](mailto:Emily.Schimelpfenig@stoel.com)

# Oregon's Energy Facility Siting Program

---

## Who We Are

Oversees review, decision-making, and compliance for most large-scale energy-generating facilities and infrastructure in Oregon.

- Energy Facility Siting Council (EFSC) is the decision-making authority.
- Oregon Department of Energy's (ODOE) Siting Division serves as staff to EFSC.

## What We Do

**Consolidated process between state agencies and local government:**

- Eliminates duplication, consolidates timelines, decisions, and judicial review
- Reviews proposal for compliance with applicable standards, laws, and rules.
- Provides opportunities for public participation and comment.
- Coordinates review and solicits input from reviewing agencies, local governments, and tribal governments.



# Application Process for Site Certificate

WE ARE HERE

Notice of  
Intent

Project  
Order

Application  
(pASC/ASC)

Draft  
Proposed  
Order

Proposed  
Order

Contested  
Case

Final Order  
& Site  
Certificate

Applicant

ODOE Siting  
Team

Applicant

ODOE Siting  
Team

ODOE Siting  
Team

Hearing  
Officer

EFSC  
Decision

Public Notice  
Comment  
Period  
Info. Meeting

Public Notice  
Info Meeting

Public Notice  
Comment  
Period  
Public Hearing

Notice

Parties to  
Contested Case

Agency  
Coordination

Agency  
Coordination

Agency  
Coordination

Agency  
Coordination

# Commenting on a Notice of Intent

---

**When:** December 16, 2025 – January 23, 2026, at 5 p.m. Pacific Time (deadline)

**What:** Provide detailed/specific comments related to the proposed facility and risks or impacts to resources protected by an EFSC standard.

**Why:** Issues and impacts identified in comments provide information for consideration in establishing studies and applicable requirements, and can result in inclusion of important information, evaluation and mitigation in a preliminary Application for Site Certificate/Application for Site Certificate

**How:** See next slide

# How to Submit Comments

---

Comments can be submitted in writing:

- At this meeting
- Via mail to ODOE's Salem office
- Via email to Siting Analyst Kathleen Sloan at:  
[kathleen.sloan@energy.Oregon.gov](mailto:kathleen.sloan@energy.Oregon.gov)
- Through our comment portal available at:  
<https://odoe.powerappsportals.us/en-US/SitingPublicComment/>

Additional details on how to comment can be found in the Public Notice and on the facility webpage:

<https://www.oregon.gov/energy/facilities-safety/facilities/Pages/SBEF.aspx>



# How to Use ODOE Comment Portal

---

- Go To: <https://odoe.powerappsportals.us/en-US/SitingPublicComment/>
- From the drop-down menu select “Speedway Energy Facility NOI”
- Follow the prompts to create a comment
- Submit your comments

You will receive an email confirmation of your submittal.

**Reminder: Public Comment Period Closes on January 23, 2026, at 5 p.m. Pacific Time**

# What happens to your comments?

---

- Provided to applicant for review/consideration
- Evaluated by the ODOE; discussed with reviewing agencies, tribal governments and special advisory group (local government), as applicable, to establish requirements
- If comments identify issues or resources within EFSC jurisdiction, provide sufficient detail, and are not already existing requirements, the Project Order may require an evaluation or study related to the comment.

# Q&A Session & Comments

## We will call on you

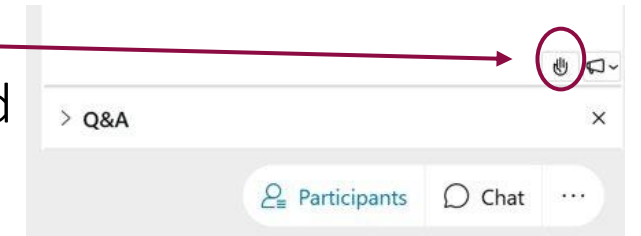
**In Person:** Please complete a comment card with your name and contact information and hand it in to ODOE staff

**Webinar Participants:** At the bottom right of the main window is a set of icons.

Click on “Participants”



Click on the hand icon in bottom right of the participant window



Clicking on it again will lower your hand

**Phone Participants:** We will call on you

Press \*3 on your telephone keypad to raise your hand

Press \*3 again on your telephone keypad to lower your hand

# Helpful Resource Links

---

Energy Facility Siting Website: <https://www.oregon.gov/energy/facilities-safety/facilities/Pages/default.aspx>

EFSC Public Guide: <https://www.oregon.gov/energy/facilities-safety/facilities/Documents/Fact-Sheets/EFSC-Public-Guide.pdf>

EFSC Siting Standards: <https://www.oregon.gov/energy/facilities-safety/facilities/Pages/Siting-Standards.aspx>

ORESA Mapping Tool: <https://oregon-explorer.apps.geocortex.com/webviewer/?app=7501a78d26844019892269bc295ea36b&viewer=renewable>

Facilities Under EFSC: <https://www.oregon.gov/energy/facilities-safety/facilities/Pages/Facilities-Under-EFSC.aspx>

EFSC Comment Portal: <https://odoe.powerappsportals.us/en-US/SitingPublicComment/>





OREGON  
DEPARTMENT OF  
ENERGY



# Thank you

Email questions to: [kathleen.sloan@energy.oregon.gov](mailto:kathleen.sloan@energy.oregon.gov)