

AMENDMENT DETERMINATION REQUEST (ADR-B2H-006)
ACCESS ROAD ADDITIONS AND A PT SITE SHIFT BETWEEN STRUCTURES
63/1–79/4
Boardman to Hemingway Transmission Line

Prepared for:

Oregon Energy Facility Siting Council
Oregon Department of Energy

Attention:

Sarah Esterson, Senior Policy Advisor
550 Capitol Street Northeast, 1st Floor
Salem, Oregon 87301

From:

Idaho Power Company
1221 West Idaho Street
Boise, Idaho 83702

Prepared by:

Eocene Environmental Group, Inc.
1120 South Rackham Way
Suite 300
Office #73
Meridian, Idaho 83642

April 2026

TABLE OF CONTENTS

| | |
|--|----|
| Introduction and Request | 2 |
| 1.0 Description of Proposed Changes | 2 |
| 2.0 Amendment Determination Evaluation..... | 7 |
| 3.0 Evaluation of Council Standards and Applicable Site Certificate Conditions | 7 |
| Conclusion | 20 |
| References | 21 |

LIST OF TABLES

| | |
|--|---|
| Table 1. Proposed Change Disturbance Calculations..... | 4 |
| Table 2. Standards, Laws, and Site Certificate Evaluation..... | 9 |

LIST OF APPENDICES

| | |
|--------------------------|--|
| Appendix A Facility Maps | |
|--------------------------|--|

INTRODUCTION AND REQUEST

Idaho Power Company (the Certificate Holder) is submitting this Amendment Determination Request (ADR) for the Boardman to Hemingway (B2H) Transmission Line (Facility). Construction of the Facility began in June 2025 as approved under the Second Amended Site Certificate (ASC). The Certificate Holder determined the need to submit this ADR to add 16 access roads, shift a pulling and tension (PT) site, and make the corresponding micro-siting corridor adjustments to match the Facility alignment between Structures 63/1 through 79/4 (Proposed Changes).

The Proposed Changes described in this ADR (ADR-B2H-006) occur on private land (Tax Lots 1S34000001700, 1S34000001900, 2S32000001200, 2S32000001100, 2S32000000700U4, 2S32000000602, 2S32000000601, and 2S32000000500) located within the Facility Site Boundary, as shown in the attached Facility Maps (**Appendix A**). This ADR supports continued compliance with Council classifications and construction standards and is submitted under the requirements of conditions PRE-PS-02(b)(ii)(1) and GEN-GS-007, which mandates an ADR for modifications to existing roads that require substantial modification and coordination with landowners for activities outside of established micro-siting corridors.

This ADR proposes to add 4.26 miles of access roads and shift one PT site that combined requires a 67.33-acre expansion of the existing micro-siting corridor (Table 1: Approved Facility Routes, Component, Site Boundary Dimensions and Disturbance Area in the Second Amended Site Certificate, EFSC, 2024). The Facility components and locations described in these Proposed Changes were included in the final Facility design in the BLM Plan of Development (POD) and therefore do not require a BLM variance request.

The Certificate Holder is requesting a written determination under Oregon Administrative Rule (OAR) 345-027-0357(1)(b) for concurrence from the Oregon Department of Energy (ODOE) that the Proposed Changes (**Section 1.0**) does not require an amendment to the Site Certificate because the Facility is being constructed substantially as described in the Second Amended Site Certificate and the Proposed Changes are within the Site Boundary. The Certificate Holder is providing an amendment determination evaluation (**Section 2.0**) and demonstrates that the Proposed Changes complies with the requirements of all applicable standards and existing Site Certificate Conditions (**Section 3.0**).

1.0 Description of Proposed Changes

This ADR includes the following three Proposed Changes (A, B, C) to the previously approved Facility components. This ADR also includes the corresponding adjustments to the micro-siting corridor to encompass these three Proposed Changes. These Proposed Changes were made to minimize disruptions to landowners and provide safe conditions for construction, as summarized in the additional details sections below.

Proposed Change A: Addition of UM-387 as *Existing Road, Substantial Modification, 71-100% Improvements*; Addition of UM-396, UM-397, and 385 as *New Road, Bladed*.

Additional details specific to Proposed Change A: The Certificate Holder worked with the landowners in the immediate vicinity to develop this mutually agreeable road network that minimizes disturbances to their properties and operations. The access road network to access these structures approved in the Site Certificate resulted in a greater disturbance footprint than the proposed roads. This change was agreed to by the landowners affected by the change. A copy of the easement and an overlay on the project features is available as a confidential attachment.

Proposed Change B: Addition of UM-427 as *Existing Road, Substantial Modification, 21-70% Improvements*; Addition of UM-428 as *New Road, Bladed*; Shift of PT site 64/3 approximately 160 feet to the south.

Additional details specific to Proposed Change B: An all-season access road network is required to operate the communication station located near structure 64/5. The Certificate Holder's operations team and the construction contractor determined the alternate route from the west would not allow for reliable winter access to the site. This change was agreed to by the landowner affected by the change. A copy of the easement and an overlay on the project features is available as confidential attachment.

The proposed shift of the PT site at Structure 64/3 resulted from a realignment of the Facility right-of-way (ROW). The original location for PT site 64/3 was approved under the ASC (See Figure 4-1 Map 20 of the Final Order).

Proposed Change C: Addition of UM-426X as *Existing Road, Substantial Modification, 21-70% Improvements*; Addition of UM-426, UM-422, UM-425, UM-423, UM-424, UM-392, UM-421, UM-430 as *New Road, Bladed*.

Additional details specific to Proposed Change C: The Certificate Holder worked with the landowner at this location to determine a mutually agreeable road network that allows for safe access to structures while minimizing impacts to their property and operations. A copy of the easement and an overlay on the project features is available as confidential attachment.

Facility Components and Disturbance Estimates

The Proposed Changes are located in Umatilla County, Oregon. The Proposed Changes are in Sections 5, 8, 9, and 10 of Township 2 South, Range 32 East, approximately 5.5 miles south of Pilot Rock, Oregon; and Sections 9 and 16 of Township 1 South, Range 34 East, approximately 13 miles east of Pilot Rock, Oregon. The Proposed Changes are all located entirely within the Facility Site Boundary.

The Proposed Changes consist of changes to access roads and the shift of a PT site. As outlined in Table 5: Summary of Access Road Classifications in the Second ASC, roads classified as *New Road, Bladed* require cut and fill to create a smooth travel surface and manage stormwater runoff, and require a 30- or 45-foot construction disturbance width (due to slopes less than 8 percent or between 8 and 15 percent) and a 14-foot operational disturbance width post-construction (EFSC, 2024). Roads classified as *Existing Road, Substantial Modification, 21-70% or 71-100% Improvement* apply to existing road prisms that require reconstruction to support safe passage for construction vehicles, including earthwork activities such as cutting, filling, and material placement to adjust the road prism and profile. These proposed access roads would have a maximum allowable construction disturbance width of 25 feet (due to 0–15 percent slopes) and a 14-foot operational disturbance width post-construction.

The proposed PT site would shift a planned, approved PT site 160-foot to the south. The PT site at 64/3 would result in a new temporary work area outside of the micro-siting corridor, however, there is no net change to the temporary disturbance associated with this PT site from the disturbance area already approved in the ASC.

Disturbance calculations associated with the Proposed Changes are outlined in **Table 1** below.

**TABLE 1
PROPOSED CHANGE DISTURBANCE CALCULATIONS**

| Proposed Access Road | Length (Miles) | Estimated Disturbance (Acres) | | |
|--|----------------|-------------------------------|--------------|---------------|
| | | Temporary | Permanent | Total |
| ADDITIONS | | | | |
| <i>Existing Road, Substantial Modification 21-70% Improvement</i> | | | | |
| Access Road UM-426X | 0.08 | 0.11 | 0.00 | 0.11 |
| Access Road UM-427 | 0.33 | 0.45 | 0.00 | 0.45 |
| <i>Existing Road, Substantial Modification 71-100% Improvement</i> | | | | |
| Access Road UM-387 | 0.18 | 0.24 | 0.09 | 0.35 |
| <i>New Road, Bladed</i> | | | | |
| Access Road UM-385 | 0.53 | 1.27 | 0.90 | 2.17 |
| Access Road UM-392 | 0.14 | 0.27 | 0.24 | 0.51 |
| Access Road UM-396 | 0.60 | 1.49 | 1.02 | 2.51 |
| Access Road UM-397 | 0.37 | 1.18 | 0.63 | 1.81 |
| Access Road UM-421 | 0.17 | 0.33 | 0.29 | 0.62 |
| Access Road UM-422 | 0.46 | 0.89 | 0.78 | 1.67 |
| Access Road UM-423 | 0.25 | 0.48 | 0.42 | 0.90 |
| Access Road UM-424 | 0.10 | 0.19 | 0.17 | 0.36 |
| Access Road UM-425 | 0.08 | 0.16 | 0.14 | 0.30 |
| Access Road UM-426 | 0.63 | 1.22 | 1.07 | 2.29 |
| Access Road UM-428 | 0.23 | 1.70 | 0.39 | 2.09 |
| Access Road UM-430 | 0.11 | 0.21 | 0.19 | 0.40 |
| Total Additions | +4.26 | +10.19 | +6.33 | +16.54 |
| REMOVALS | | | | |
| <i>Existing Road, Substantial Modification 21-70% Improvement</i> | | | | |
| Access Road UM-033 | 0.19 | 0.25 | 0.00 | 0.25 |
| Access Road UM-016 | 0.54 | 0.72 | 0.00 | 0.72 |
| Access Road UM-323 | 0.23 | 0.31 | 0.00 | 0.31 |
| Access Road UM-323X | 0.08 | 0.11 | 0.00 | 0.11 |
| Access Road UM-273 | 0.25 | 0.33 | 0.00 | 0.33 |
| <i>Existing Road, Substantial Modification 71-100% Improvement</i> | | | | |
| Access Road UM-139 | 1.37 | 1.83 | 0.89 | 2.72 |
| Access Road UM-279 | 0.58 | 0.77 | 0.28 | 1.05 |
| <i>New Road, Primitive</i> | | | | |
| Access Road UM-014 | 0.10 | 0.19 | 0.00 | 0.19 |
| Access Road UM-041 | 0.45 | 0.83 | 0.00 | 0.83 |
| Access Road UM-233 | 0.38 | 0.74 | 0.00 | 0.74 |
| Access Road UM-269 | 0.85 | 1.65 | 0.00 | 1.65 |
| Access Road UM-274 | 1.15 | 2.23 | 0.00 | 2.23 |
| Access Road UM-219 | 0.60 | 1.16 | 0.00 | 1.16 |
| Access Road UM-272 | 0.21 | 0.41 | 0.00 | 0.41 |
| Access Road UM-035 | 0.17 | 0.10 | 0.00 | 0.10 |
| Access Road UM-268 | 0.12 | 0.23 | 0.00 | 0.23 |
| <i>New Road, Bladed</i> | | | | |
| Access Road UM-028 | 0.05 | 0.10 | 0.08 | 0.18 |
| Access Road UM-267 | 0.16 | 0.31 | 0.27 | 0.58 |
| Total Removals | -7.48 | -12.27 | -1.52 | -13.79 |
| Total Change | | -2.08 | +4.81 | +2.73 |

Geology & Soils

The Proposed Changes are in a geological unit mapped as Columbia River Basalt Group bedrock, with Grande Ronde Basalt and Wanapum Basalt (Shannon & Wilson, Inc., 2024). Subsurface conditions in the vicinity were informed by three geotechnical borings (boreholes BH-63/2, BH-64/4, and BH-78/5) all located within approximately 1,000 feet from the Proposed Changes. The terrain in the Proposed Changes is characterized by generally flat to moderate steep slopes (2-25 percent). Geotechnical investigations did not indicate an active landslide risk in the location of the Proposed Changes.

Borehole BH-63/2 encountered approximately 0.6 feet of topsoil overlying a dense residual soil unit from 0.6 to 2.9 feet below ground surface (bgs), described as gray to brown clayey gravel with sand containing angular to subangular gravel, fine to coarse sand, medium-plasticity fines, and minor iron-oxide staining. Below 2.9 feet bgs, the boring advanced into Grande Ronde Basalt of the Columbia River Basalt Group, which continued to the termination depth of 18.5 feet bgs. The basalt was gray, fine-grained, and classified as medium strong to strong (R3–R4) with very closely spaced joints exhibiting rough to smooth, undulating to planar surfaces at variable orientations, thin mineral and sediment infill, localized iron-oxide staining, and occasional incipient fractures; the unit ranged from fresh to slightly weathered (Shannon & Wilson, Inc., 2024, Fig A14).

Boring BH-64/4 encountered residual soil from the surface to approximately 2.1 feet bgs, described as gray, brown, and white gravel with silt and sand (GP-GM) containing fine to coarse, subangular to subrounded gravel, fine to coarse sand, nonplastic to low-plasticity fines, and trace to moderate iron-oxide staining. Below this depth, the boring advanced into Grande Ronde Basalt of the Columbia River Basalt Group, which extended to the termination depth of 17 feet bgs. The basalt was gray, fine-grained, and slightly vesicular, classified as medium strong to strong (R3–R4), with extremely to very closely spaced joints exhibiting smooth to rough, planar to undulating surfaces of variable orientation (0°–90°), containing 0 mm to over 1 cm of sediment and mineral infill and iron-oxide staining; the unit was fresh to slightly weathered (Shannon & Wilson, Inc., 2024, Fig A17).

Boring BH-78/5 encountered very dense residual soil from the surface to approximately 2.7 feet bgs, described as gray silty gravel (GM) containing fine to coarse, subangular to subrounded gravel, fine to coarse sand, and nonplastic fines. Below this depth, the boring advanced into Wanapum Basalt of the Columbia River Basalt Group, with medium strong to strong (R3–R4), gray, fine-grained, moderately vesicular basalt extending from 2.7 to 14.5 feet bgs. This interval exhibited extremely close to closely spaced joints with rough, undulating surfaces of variable orientation (0°–90°), containing 0 to 3 mm of clay and mineral infill, iron-oxide staining, and frequent fracture and rubble zones; the unit was slightly weathered. From 14.5 to 18 feet bgs, the basalt remained medium strong to strong (R3–R4), gray, and fine-grained, with very close to closely spaced joints characterized by smooth to rough, undulating to planar surfaces at low to high angles (5°–90°), containing thin mineral infill and fracture zones; this deeper interval ranged from fresh to slightly weathered (Shannon & Wilson, Inc., 2024, Fig A36).

Plant and Wildlife Habitat

The Proposed Changes are located within a variety of habitat types as defined by the Oregon Department of Fish and Wildlife (ODFW):

- Construction of Access Road UM-385 would result in 2.17 acres of disturbance in ODFW Category 6 Agriculture habitat.

- Construction of Access Roads UM-396 and UM-397 would result in 4.32 acres of disturbance in ODFW Category 2 Introduced Upland Vegetation habitat (Annual Grassland ecological system).
- Construction of Access Roads UM-387, UM-392, UM-421, UM-422, UM-423, UM-424, UM-425, UM-426 (partial), UM-426X, UM-428, UM-430, and PT site 64/3 would result in a combined 10.68 acres of disturbance in ODFW Category 2 Native Grasslands habitat (Columbia Basin Foothill and Canyon Dry Grassland ecological system).
- Construction of Access Road UM-426 (partial) would result in 0.55 acres of disturbance in Category 2 Douglas Fir/Mixed Grand Fir habitat (Northern Rocky Mountain Dry-Mesic Montane Mixed Conifer Forest ecological system)
- Construction of Access Road UM-427 would result in 1 acre of disturbance in Category 2 Riparian Woodland and Shrubland habitat (Columbia Basin Foothill Riparian Woodland and Shrubland ecological system).

The Proposed Changes include several work areas within big game winter range habitat. Access Roads UM-385, UM-387, UM-396, UM-397, UM-421, UM-427, UM-428, UM-430, and PT site 64/3 are within ODFW designated mule deer (*Odocoileus hemionus*) winter range habitat. Access Roads UM-392, UM-421, UM-422, UM-423, UM-424, UM-425, UM-426, UM-426X, UM-427, UM-428, UM-430, and PT Site 64/3 are within ODFW designated elk (*Cervus canadensis*) winter range habitat (**Appendix A, Figure 4**). Timing restrictions in winter range habitats (CON-FW-01) do not allow ground-disturbing activities between December 1-March 31, unless an exception is approved.

Noxious weed surveys were conducted in 2022 and 2023 in the vicinity of the Proposed Changes. None of the Proposed Changes disturbance areas were fully surveyed for noxious weeds in the field. Surveys in the surrounding areas identified several noxious weed species including dog rose (*Rosa canina*), Medusahead rye (*Taeniatherum caput-medusae*), Ventenata (*Ventenata dubia*), jointed goat grass (*Aegilops cylindrica*), Scotch thistle (*Onopordum acanthium*), sulfur cinquefoil (*Potentilla recta*), and St. Johnswort: Klamathweed (*Hypericum perforatum*) (Tetra Tech, 2023a; see Umatilla County Maps 24 and 31). Although 3.58-miles of access roads and 1.22 acres of PT Site 64/3 of the Proposed Changes were not directly surveyed for noxious weeds, it is assumed that similar noxious weeds are present throughout. The spread of noxious weeds will be mitigated by weed wash stations and treatment procedures established by the Noxious Weed Plan.

Wetlands, Waters, and Fish Passage Plans

Two separate fish passage crossings are present in the vicinity of the Proposed Changes along Access Roads UM-396 and UM-397, respectively, at delineated aquatic features UM-SW-STR-010 and UM-W-1806. Access Road UM-396 received an ODFW Fish Passage authorization PA-09-0076 in July 2025 and Access Road UM-397 received a Fish Passage authorization PA-09-0059 in December 2023. The work requires the installation of temporary timber matting (Type 4 crossing). In-water work would be restricted to July 1 – September 30, per the ODFW authorizations. The feature (UM-SW-STR-010) along UM-396 was delineated as an intermittent stream, and the feature (UM-W-1806) along UM-397 was delineated as a wetland. Both features feed into Dry Hollow. Removal fill activities at both locations are authorized under DSL permit 61621RF Modification.

Supplemental Special-Status Species Surveys

The Proposed Changes are not within the range of the Washington ground squirrel (WAGS), therefore no supplemental WAGS surveys are required and no impacts to the species or their habitat are anticipated.

Proposed Change A and B are located within suitable habitat for of the Oregon Department of Agriculture- (ODA) listed threatened plant species, *Astragalus collinus* var. *laurentii* (Lawrence's milkvetch). Supplemental surveys were performed in 2024 and 2025 within the proposed micrositeing corridor addition associated with the Proposed Change by the Certificate Holder. Small populations of Lawrence's milkvetch were observed approximately 50 feet from Access Road UM-387. These populations will be flagged and avoided by 33-feet per CON-TE-02. No impacts to ODA-list plant species are anticipated from Proposed Changes A and B.

Proposed Change C is outside the range of any ODA listed threatened or endangered plant species. While some portions of the Proposed Change C were initially surveyed in 2023, the lack of threatened and endangered species' range overlap precluded the area from any further supplemental surveys. No impacts to ODA listed threatened or endangered species are anticipated at Proposed Change C.

Additional discussion of results and surveys for which no resources were found is in **Section 3.0**.

2.0 Amendment Determination Evaluation

Pursuant to OAR 345-027-0357(1)(b), the purpose of this ADR is to obtain ODOE determination that the proposed changes do not require a Site Certificate Amendment.

OAR 345-027-0350 identifies changes that would require the Certificate Holder to amend its Site Certificate. Except for exempted changes allowed under OAR 345-027-0353, none of which apply, an amendment to a Site Certificate is required to do the following:

Design, construct or operate a facility in a manner different from the description in the site certificate, if the proposed change:

- (a) Could result in a significant adverse impact that the Council has not addressed in an earlier order and the impact affects a resource or interest protected by a Council standard;*
- (b) Could impair the certificate holder's ability to comply with a site certificate condition;*
or
- (c) Could require a new condition or a change to a condition in the site certificate*

Section 3.0 demonstrates that the proposed changes would result in neither significant adverse impact the EFSC has not addressed in an earlier order nor an adverse impact to any resource or interest protected by EFSC standards, as described under OAR 345-027-0050(4)(a). Additionally, the section describes how the proposed changes would not impair the Certificate Holder's ability to comply with any Site Certificate conditions nor require a new condition or change of condition in the Site Certificate.

3.0 Evaluation of Council Standards and Applicable Site Certificate Conditions

This section (**Table 2**) provides a review of the Proposed Changes as it relates to each Division 22 Standard, potentially applicable Division 24 Standards, and other standards with related Site Certificate Conditions. The table includes a written evaluation with justification that the Proposed Changes would not result in any significant adverse impacts that the Council has not addressed

in an earlier order, and that the Proposed Changes would not change the Certificate Holder's ability to comply with the existing Site Certificate Conditions as listed.

**TABLE 2.
STANDARDS, LAWS, AND SITE CERTIFICATE EVALUATION**

| Standard | Evaluation | Related Site Certificate Conditions |
|--|---|---|
| <p>OAR 345-022-0000 General Standard of Review</p> | <p>The Council previously found that the Facility complies with the General Standard of Review. The Proposed Changes would not affect this finding and would not result in any significant impacts not previously evaluated by the Council.</p> <p>The Proposed Changes to the Facility (as approved in the Site Certificate) were included in the final Facility design within the BLM POD. As part of the POD, the proposed components have been previously coordinated with the landowner through the contractor's lands liaison (Tax Lots 1S34000001700, 1S34000001900, 2S32000001200, 2S32000001100, 2S32000000700U4, 2S32000000602, 2S32000000601, and 2S32000000500). The Proposed Changes increase overall construction disturbance by 2.73 acres and increases the micro siting corridor by 67.33 acres. The Site Boundary would remain unchanged.</p> <p>The Proposed Changes were all developed in conjunction with and approved by the affected landowners. A confidential attachment has been submitted with this ADR depicting the Certificate Holder's easements overlain the Proposed Changes satisfying CON-GS-02.</p> <p>The Facility will continue to be designed, constructed, operated, and decommissioned substantially in accordance with the Site Certificate and in compliance with Oregon Revised Statutes (ORS) Chapter 469, applicable Council rules, and all relevant state and local laws, rules, and ordinances. The Proposed Changes would not alter the Certificate Holder's ability to comply with the Site Certificate Conditions.</p> | <p>GEN-GS-01: Commencement and completion of construction GEN-GS-02: Pre-construction requirements GEN-GS-03: Compliance during all phases GEN-GS-04: Notification of environmental impacts GEN-GS-05: Notification of new owners GEN-GS-06: Approved transmission line corridors GEN-GS-07: Evidence of landowner consent CON-GS-01: Semiannual construction progress report CON-GS-02: Construction rights</p> <p>Not Applicable: OPR-GS-01: Annual reporting OPR-GS-02: Site legal description OPR-GS-03: Vegetation restoration</p> |
| <p>OAR 345-022-0010 Organizational Expertise</p> | <p>The Proposed Changes were identified as necessary during design development in this portion of the Facility, are based on on-site conditions, and were requested by the affected landowners. The requested additional access roads and micro siting corridor expansion allows access to the Facility work areas.</p> <p>The Proposed Changes would not alter the basis for the Council's earlier findings that the Organizational Expertise Standard is satisfied, nor would it alter the Certificate Holder's ability to comply with the Site Certificate Conditions.</p> | <p>GEN-OE-01: Notification of contractors GEN-OE-02: Responsibility of non-compliance GEN-OE-03: Report of Site Certificate violations PRE-OE-01: Notification of construction managers PRE-OE-02: Construction contractor compliance PRE-OE-03: Proof of third-party permits</p> <p>Not Applicable: OPR-OE-01: Proof of inspection</p> |

**TABLE 2.
STANDARDS, LAWS, AND SITE CERTIFICATE EVALUATION**

| Standard | Evaluation | Related Site Certificate Conditions |
|---|---|---|
| OAR 345-022-0020 Structural Standard | <p>The Certificate Holder complied with all preconstruction Site Certificate Conditions related to the Structural Standard, including those addressing human safety and geological observations.</p> <p>The terrain in the area of the Proposed Changes is characterized as generally flat to moderate steep slopes (2-25 percent) supporting stable construction conditions. Geotechnical investigations did not indicate any active landslide risks in the location of the Proposed Changes (Shannon & Wilson, Inc., 2024, pp.18-19).</p> <p>The Certificate Holder would continue to design and construct road prisms in accordance with geotechnical recommendations to avoid risks to human safety and the environment. The Proposed Changes would not alter the basis for the Council's earlier findings that the Structural Standard is satisfied, nor would it alter the Certificate Holder's ability to comply with the Site Certificate Conditions related to geologic hazards or standards related to human safety.</p> | <p>GEN-SS-01: Compliance with building codes GEN-SS-02: Construct to prioritize human safety GEN-SS-03: Notification of foundation differences GEN-SS-04: Notification of geological observations PRE-SS-01: Pre-construction geological reports</p> |
| OAR 345-022-0022 Soil Protection | <p>The Proposed Changes would result in a net total of 2.73 acres of ground disturbance within the previously approved Facility Site Boundary. Although the terrain is generally flat with moderate sloped segments, erosion and sediment control best management practices would be implemented to ensure effective stormwater management and minimize sediment delivery from disturbed areas.</p> <p>Erosion and sediment control measures would be consistent with those identified in the 1200-C Construction Stormwater General Permit for the Project (ODEQ, 2025). All ground-disturbing activities would comply with the approved Erosion and Sediment Control Plan (ESCP).</p> <p>Topsoil within the work areas would be stockpiled for application during site restoration. All ground-disturbing activities would comply with the approved Erosion and Sediment Control Plan (ESCP), Hazardous Waste Management and Spill Response Plan (HWMSRP), and Spill Prevention Control and Countermeasures (SPCC) Plan. No blasting would be required for this work.</p> <p>The Proposed Changes would not alter the Certificate Holder's ability to comply with Site Certificate Conditions, nor would it affect the basis for the Council's earlier findings that the Soil Protection Standard is satisfied.</p> | <p>GEN-SP-01: General Construction Permit and ESCP submission and compliance GEN-SP-02: HWMSRP submission and compliance GEN-SP-03: SPCC Plan submission and compliance</p> <p>Not Applicable: GEN-SP-04: Blasting Plan finalization OPR-SP-01: Soil erosion impacts inspections</p> |
| OAR 345-022-0030 Land Use | <p>The Proposed Changes would not result in any significant land-use impacts not previously</p> | <p>GEN-LU-03: Umatilla County permitting GEN-LU-04: Umatilla County setback</p> |

**TABLE 2.
STANDARDS, LAWS, AND SITE CERTIFICATE EVALUATION**

| Standard | Evaluation | Related Site Certificate Conditions |
|----------|---|---|
| | <p>addressed by the Council. All work would occur within the Facility Site Boundary.</p> <p>The Proposed Changes are located primarily within Umatilla County’s Exclusive Farm Use (EFU) zone and complies with Umatilla County Development Code (UCDC) § 152.059(C) and ORS 215.275, which allow utility facilities necessary for public service in EFU via land-use decision applying § 152.617 criteria, which the County and Council have already applied to this facility. A small portion of the UM-423 and its associated micro-siting corridor also clips the County’s Grazing/Farm (GF) zone; however, utility facilities necessary for public service are likewise allowed in GF through the same § 152.617 review pathway, and the County and Council have previously applied these criteria to the certified Facility. The area of overlap is also subject to the Critical Winter Range (CWR) Overlay Zone, which functions as an overlay under UCDC § 152.041 and does not alter the underlying allowance for utility facilities, but requires that development continues to comply with existing Site Certificate conditions and associated mitigation, discussed under the justification for OAR 345-022-0060 Fish and Wildlife Habitat. To qualify, such facilities must demonstrate locational dependency, technical necessity, and serve public health and safety. The Proposed Changes support a modification involving the addition of 16 access roads and an expansion of the previously approved micro-siting corridor to accommodate refined construction needs for authorized transmission line components. Because the Proposed Changes are integral to facility construction, it is considered part of the utility infrastructure and eligible under both EFU and GF provisions.</p> <p>The Proposed Changes involve 8 separate parcels (5 different landowners) that require Umatilla County Zoning permit review and approval. Zoning permits were approved in October 2025 for tax lots 1S34000001700 and 1S34000001900. The zoning permit applications for the remaining tax lots (2S32000001200, 2S32000001100, 2S32000000700U4, 2S32000000602, 2S32000000601, and 2S32000000500) have been submitted to Umatilla County for review and approval. Communication from the Umatilla County Planning Department indicates that the remaining zoning permits are expected to be approved on or around April 17, 2026.</p> <p>Construction of the Facility would comply with the 2023 Agricultural Lands Assessment and Mitigation Plan (IPC, 2023a). Mitigation actions employed by the Certificate Holder pursuant to this mitigation plan, unless otherwise specified in this mitigation plan or other agreement negotiated with an individual landowner, would be implemented within 45 days following completion of final cleanup on an affected property, or as conditions allow. Temporary repairs</p> | <p>distances GEN-LU-11: Agricultural Mitigation Plan GEN-LU-13: ROW Clearing Assessment PRE-LU-01: Umatilla County road construction</p> <p>Not Applicable: GEN-LU-01: Morrow County permitting GEN-LU-02: Morrow County setback distances GEN-LU-05: Union County permitting GEN-LU-06: Union County setback distances GEN-LU-07: Baker County permitting GEN-LU-08: Malheur County permitting GEN-LU-09: Malheur County setback distances GEN-LU-10: City of North Powder setback distances GEN-LU-12: Transmission line ROW in Goal 4 forest lands PRE-LU-02: Baker County aggregate suppliers CON-LU-01: Baker County setback distances CON-LU-02: Morgan Lake notification</p> |

**TABLE 2.
STANDARDS, LAWS, AND SITE CERTIFICATE EVALUATION**

| Standard | Evaluation | Related Site Certificate Conditions |
|------------------------------------|--|---|
| | <p>would be made by Certificate Holder during construction or operation, as needed, to minimize the risk of additional property damage or interference with access to or use of the property. Umatilla County zoning and underlying agricultural use information are shown in the Land Use map in Appendix A.</p> <p>The Proposed Changes would result in a reduction of 2.08 acres of temporary disturbance and an addition of 4.81 acres of permanent disturbance within lands designated as either rangeland, agricultural, or developed lands within the Agricultural Mitigation Plan under GEN-LU-11. The changes would minimally reduce amount of forage available to grazing animals in rangeland areas during construction but are not expected to have a direct impact on any other ongoing agricultural practices. Following the completion of construction activities, temporary disturbance areas would be restored and reseeded per GEN-FW-01.</p> <p>The proposed road improvements would comply with all applicable Umatilla County permitting requirements (GEN-LU-03) and mitigation outlined in GEN-LU-11. Therefore, the Proposed Changes would not alter the basis for the Council's earlier findings that the Land Use Standards are satisfied, nor would it affect the Certificate Holder's ability to comply with Site Certificate conditions.</p> | |
| OAR 345-022-0040 Protected Area | The Proposed Changes are within the existing analysis area for the Protected Areas Standard and within the Site Boundary. The Proposed Changes would not impact Protected Areas and would not alter the basis for the Council's earlier findings that the Protected Areas Standard is satisfied. | <p>Not Applicable: GEN-PA-01: Wildlife agency coordination GEN-PA-02: Ladd Marsh Wildlife Area avoidance</p> |

**TABLE 2.
STANDARDS, LAWS, AND SITE CERTIFICATE EVALUATION**

| Standard | Evaluation | Related Site Certificate Conditions |
|--|---|--|
| <p>OAR 345-022-0050 Retirement and Financial Assurance</p> | <p>The Proposed Changes would not alter the Certificate Holder’s ability to restore the site to a useful, non-hazardous condition following the completion of construction.</p> <p>The Proposed Changes would add approximately 4.26 miles of access road to the Facility, resulting in an additional 4.81 acres of permanent disturbance and a reduction of 2.08 acres of temporary disturbance. Changes to the retirement costs would be tracked and the Certificate Holder will adjust the amount of bond as needed, pursuant to PRE-RT-01.</p> <p>The Certificate Holder would maintain the financial assurance mechanisms required by the Site Certificate, including a bond or letter of credit sufficient to cover site restoration. The Proposed Change would not affect the Council’s earlier findings that the Retirement and Financial Assurance Standard is satisfied, nor would it alter the Certificate Holder’s ability to comply with Site Certificate Conditions.</p> | <p>GEN-RT-01: Prevention of non-restorable site PRE-RT-01: Pre-construction letter of credit naming State as payee OPR-RT-01: In-service letter of credit naming State as payee RET-RT-01: Retirement plan compliance RET-RT-02: Retirement of facility upon cessation of activities</p> |
| <p>OAR 345-022-0060 Fish and Wildlife Habitat</p> | <p>Access Roads UM-387, UM-392, UM-421, UM-422, UM-423, UM-424, UM-425, UM-426 (partial), UM-426X, UM-428, UM-430, and PT site 64/3 of the Proposed Changes are within habitat designated as Category 2 Native Grassland by ODFW. The areas would be reclaimed following construction per the Category 2 Native Grasslands Reclamation, Revegetation, and Monitoring Plan (IPC, 2025).</p> <p>Noxious weed surveys conducted in 2022 and 2023 in the surrounding areas identified several noxious weed species in the vicinity of the Proposed Changes, including dog rose (<i>Rosa canina</i>), Medusahead rye (<i>Taeniatherum caput-medusae</i>), Ventenata (<i>Ventenata dubia</i>), jointed goat grass (<i>Aegilops cylindrica</i>), Scotch thistle (<i>Onopordum acanthium</i>), sulfur cinquefoil (<i>Potentilla recta</i>), and Klamathweed (<i>Hypericum perforatum</i>) (Tetra Tech, 2023a; see Umatilla County Maps 24 and 31). Although 3.58-miles of access roads and 1.22 acres of PT Site 64/3 of the Proposed Changes were not surveyed for noxious weeds, it is assumed noxious weeds are present throughout. The spread of noxious weeds will be mitigated by weed wash stations on UM-123, UM-263, and UMN-377 and treatment procedures established by the Noxious Weed Plan.</p> <p>Per GEN-FW-04, the Proposed Changes include multiple disturbance areas in different ODFW fish and wildlife habitats. Multiple access road disturbance areas are in ODFW Category 2 Native Grassland habitat which requires a 1:1/2 ratio of temporary impacts acres to compensatory habitat mitigation acres, and a 1:2 ratio of permanent impact acres to compensatory habitat mitigation acres (IPC, 2024). Access Road UM-385 is in Category 6</p> | <p>GEN-FW-01: Category 2 Native Grasslands Reclamation, Revegetation, and Monitoring Plan GEN-FW-02: Vegetation Management Plan compliance GEN-FW-03: Noxious Weed Plan finalization GEN-FW-04: Fish and Wildlife Habitat Mitigation Plan GEN-FW-05: Construction personnel training GEN-FW-06: Environmentally sensitive area flagging and mapping GEN-FW-07: Private facility access road speed limit PRE-FW-02: Biological surveys CON-FW-01: Elk or mule deer winter range CON-FW-03: Migratory bird nesting season surveys CON-FW-04: Raptor nest buffers</p> |

**TABLE 2.
STANDARDS, LAWS, AND SITE CERTIFICATE EVALUATION**

| Standard | Evaluation | Related Site Certificate Conditions |
|----------|--|--|
| | <p>Agriculture habitat. Category 6 Agriculture habitat does not require any compensatory mitigation for temporary or permanent impacts. Access Roads UM-396 and UM-397 are within Category 2 Introduced Upland Vegetation habitat. Temporary impacts in Category 2 Introduced Upland Vegetation habitat do not require additional compensatory mitigation; permanent impacts will be mitigated at 1:2 ratio. The portions of the Proposed Changes found in the other ODFW Category 2 habitat types (Douglas Fir/Mixed Grand Fir and Riparian Woodland and Shrubland habitats) would require a 1:2 ratio for both permanent and temporary impacts to compensatory habitat mitigation acres (IPC, 2024).</p> <p>Per OPR-FW-01, during the third year of operation, the Certificate Holder will provide the Council with a report demonstrating that fish and wildlife habitat mitigation is commensurate with the final compensatory mitigation calculations. As a part of this documentation, total disturbance associated with construction of the Facility will be rectified using as-built data collected following site reclamation. Final permanent disturbance will include all Facility components that will be used for Operations and Maintenance of the transmission line. Final temporary disturbance calculations will utilize staking data for the limits-of-disturbance, the final permanent disturbance, and any areas of unauthorized temporary disturbance that may have occurred as a part of discharges or other potential compliance items observed during construction.</p> <p>The Proposed Changes are within designated ODFW winter range habitat for either mule deer, elk, or both (Appendix A, Figure 4). Timing restrictions in winter range habitats (CON-FW-01) do not allow ground-disturbing activities between December 1-March 31, unless an exception is approved.</p> <p>During the avian breeding season, protocol ground surveys for non-raptorial migratory bird nests will occur within 7 days prior to ground disturbance at construction locations. Aerial raptor nest surveys will be conducted each year during the breeding season to identify occupied nests requiring protection within 1 mile of the Facility. Agency guidelines for migratory bird and raptor protection would be followed, which include spatial and temporal nest avoidance.</p> <p>The Proposed Changes would not alter the Certificate Holder's ability to comply with the Site Certificate Conditions, nor the basis for the Council's prior findings that the Fish and Wildlife Standard is satisfied.</p> | <p>OPR-FW-01: Compensatory mitigation calculations report</p> <p>Not Applicable: GEN-FW-08: Avian Protection Plan compliance PRE-FW-01: Biological surveys on unsurveyed land PRE-FW-03: Sage-Grouse Habitat Mitigation Plan finalization PRE-FW-04: Elk and sage-grouse habitat traffic study (preconstruction) CON-FW-02: Pygmy rabbit colony or bat roost observation CON-FW-05: Sage-Grouse Habitat Mitigation Plan compliance CON-FW-06: Sage-grouse areas construction restrictions OPR-FW-02: Access control on roads in elk and sage-grouse habitat OPR-FW-03: Sage-grouse indirect impact calculation and mitigation OPR-FW-04: Elk and sage-grouse habitat traffic study (during operation)</p> |

**TABLE 2.
STANDARDS, LAWS, AND SITE CERTIFICATE EVALUATION**

| Standard | Evaluation | Related Site Certificate Conditions |
|--|--|---|
| <p>OAR 345-022-0070 Threatened and Endangered Species</p> | <p>The Proposed Changes are located outside the range of the Washington ground squirrel (<i>Urocitellus washingtoni</i>, WAGS), and therefore no surveys are required.</p> <p>Vegetation surveys were conducted in 2023, 2024, and 2025 (Appendix A, Figure 5) to evaluate the presence of threatened and endangered plant species. The survey in 2023 and 2024 identified Lawrence’s milkvetch, an ODA-listed threatened plant species within 50 feet of the Access Road UM-387 (Tetra Tech, 2023b; see Umatilla County Maps 24 and 31; Eocene, 2024; see panels 7, 8, and 12). The populations of Lawrence’s milkvetch will be flagged and have a 33-foot buffer placed around them in accordance with Site Certificate Condition CON-TE-02. No impacts to Lawrence’s milkvetch are anticipated.</p> <p>Vegetation surveys shown on the Resource Survey Map in Appendix A depict the survey area. The Proposed Changes would not affect the Council’s earlier findings that the Threatened and Endangered Species Standard is satisfied nor alter the Certificate Holder’s ability to comply with the Site Certificate conditions.</p> | <p>CON-TE-02: Threatened or endangered plant species buffer</p> <p>Not Applicable: CON-TE-01: WAGS habitat restrictions</p> |
| <p>OAR 345-022-0080 Scenic Resources</p> | <p>The Proposed Changes would not alter any approved tower types or locations approved in the Second Amended Site Certificate and would not affect the basis for the Council’s earlier findings that the Scenic Resources Standard is satisfied.</p> | <p>Not Applicable: GEN-SR-01: Dull-galvanized steel GEN-SR-02: Ladd Marsh Wildlife Management Area modifications GEN-SR-03: National Historic Oregon Trail Interpretive Center modifications GEN-SR-04: Birch Creek Area modifications</p> |
| <p>OAR 345-022-0090 Historic, Cultural, and Archaeological Resources</p> | <p>Cultural resource surveys along the affected segments of the additional micrositing corridor and associated access routes have been completed through a series of Oregon Preconstruction Class III and Initial Class III surveys conducted between 2011 and 2025. The Certificate Holder’s cultural consultant conducted Oregon Preconstruction Class III surveys in 2022 and 2023, which included UM-387, UM-421, and UM-430 (Eocene 2025, Appendix A; Map Panels 34 and 46). An additional 2025 Oregon Preconstruction Class III Intensive Survey (Addendum I) expanded coverage to UM-385, UM-392, UM-422, UM-423, UM-424, UM-425, UM-427, and UM-428 (Eocene 2026, Appendix A; Map Panels 35 and 46). Portions of UM-426, UM-426X, and UM-428 were previously surveyed through Initial Class III surveys completed in 2011, 2016, and 2023 (Tetra Tech and Eocene 2024, Appendix A; Map Panels 19 and 23). Cultural resource survey areas are indicated in the</p> | <p>GEN-HC-02: Historic Properties Management Plan</p> <p>Not Applicable: GEN-HC-01: Trail resource avoidance OPS-HC-01: Cultural Resources Technical Report</p> |

**TABLE 2.
STANDARDS, LAWS, AND SITE CERTIFICATE EVALUATION**

| Standard | Evaluation | Related Site Certificate Conditions |
|-------------------------------------|--|---|
| | <p>Cultural Resource Map in Appendix A.</p> <p>Portions of Access Roads UM-396, UM-397 and PT site 64/3 could not be surveyed for cultural resources due to the landowner denying right of entry for cultural resource surveys at the time of inclusion in the Facility. To mitigate the lack of survey information along the Proposed Changes, full-time cultural resources monitoring is prescribed in this area during ground-disturbance activities by Appendix G of the Historic Properties Management Plan and approved by BLM.</p> <p>Access Road UM-426X is located within a cultural avoidance area identified during the 2025 Oregon Preconstruction Addendum. The prescribed mitigation for this segment involves gravel cap installation to avoid impacts to the underlying cultural resource. This method of avoidance is required by the BLM and prescribed by Appendix G of the HPMP.</p> <p>The Proposed Changes would not alter the Certificate Holder's ability to comply with the Site Certificate Conditions and does not alter the basis for the Council's earlier findings that the Historic, Cultural, and Archaeological Resources Standard is satisfied.</p> | |
| OAR 345-022-0100 Recreation | The Proposed Changes would not alter any approved tower types or locations approved in the Second Amended Site Certificate and would not affect the basis for the Council's earlier findings that the Recreation Standard is satisfied. | Not Applicable: GEN-RC-01: Morgan Lake construction criteria |
| OAR 345-022-0110 Public Services | The Proposed Changes are within the existing analysis area for Public Services. There would be no alteration in limiting public services due to the Proposed Changes. The Proposed Changes would not alter the basis for the Council's earlier findings that the Public Services Standard is satisfied, nor would it alter the Certificate Holder's ability to comply with the Site Certificate Conditions. | GEN-PS-02: Fire Prevention and Suppression Plan submission PRE-PS-02: Traffic impacts and transportation coordination PRE-PS-04: Environmental and Safety Training Plan submission Not Applicable: PRE-PS-01: Owyhee Irrigation District consultation and mitigation PRE-PS-03: FAA and Oregon Department |

**TABLE 2.
STANDARDS, LAWS, AND SITE CERTIFICATE EVALUATION**

| Standard | Evaluation | Related Site Certificate Conditions |
|---|---|--|
| | | of Aviation hazard determinations GEN-PS-01: Helicopter Use Plan submission GEN-PS-03: DELETED |
| OAR 345-022-0115 Wildfire Prevention and Risk Mitigation | All construction and operation activities associated with the Proposed Changes would comply with the Fire Prevention and Suppression Plan. The Proposed Changes would not alter the basis for the Council's earlier findings that the Wildfire Prevention and Risk Mitigation Standard is satisfied, nor alter the Certificate Holder's ability to comply with the Site Certificate Conditions. | GEN-PS-02: Fire Prevention and Suppression Plan submission GEN-WMP-01: Wildfire Mitigation Plan (WMP) Not Applicable: OPR-WMP-01: Annual WMP Report submittal |
| OAR 345-022-0120 Waste Minimization | The Certificate Holder's Construction Waste Management Plan applies to both the Certificate Holder and contractors associated with these Proposed Changes. The Proposed Changes would not alter the basis for the Council's earlier findings that the Waste Minimization Standard is satisfied, nor alter the Certificate Holder's ability to comply with Site Certificate Conditions. | GEN-WM-01: Construction Waste Management Plan submission |
| OAR 345-024-0090 Siting Standards for Transmission Lines | The Proposed Changes would not change the basis for the Council's prior findings that the Siting Standards for Transmission Lines are satisfied and would not alter the Certificate Holder's ability to comply with the Conditions of the Site Certificate. | Not Applicable: GEN-TL-01: Reducing human exposure to electromagnetic fields GEN-TL-02: National Electric Safety Code compliance PRE-TL-01: Pre-construction Public Utility Commission briefing OPR-TL-01: Shock risk reduction OPR-TL-02: Annual Public Utility Commission safety updates |
| OAR 635-412-0035 Fish Passage | Two fish passage crossing locations are associated with Proposed Change A along roads UM-396 and UM-397. The fish passage plans at these locations were approved by ODFW in July 2025 and March 2024, respectively (Fish Passage Approval PA-09-0076 and PA-09- | GEN-FP-01: Fish Passage Plan finalization |

**TABLE 2.
STANDARDS, LAWS, AND SITE CERTIFICATE EVALUATION**

| Standard | Evaluation | Related Site Certificate Conditions |
|---|---|--|
| | <p>059; ODFW (2025); ODFW (2024)).</p> <p>The authorizations prescribe the installation of temporary timber matting (Type 4 crossing) (Tetra Tech, 2025). Work would be limited to the in-water work window designated by ODFW (July 1–September 30). The Proposed Changes would not affect the basis for the Council’s prior findings that the Fish Passage Standard is satisfied and does not alter the Certificate Holder’s ability to comply with the Site Certificate conditions.</p> | |
| <p>OAR 340-035-0035 Noise Control Regulations</p> | <p>The Proposed Changes would not result in any exceedance of Oregon Department of Environmental Quality (ODEQ) noise control standards. The Proposed Changes would not impact transmission line corona noise.</p> <p>Pursuant to OAR 340-035-0035(5)(c) and (g), sounds originating from construction activities and those generated by tires or motors used to propel road vehicles are expressly exempt from regulation under ODEQ’s noise control rules. As such, the temporary construction noise associated with the Proposed Changes are not subject to enforcement under this rule.</p> <p>The Proposed Changes would not affect the Council’s earlier findings that the Noise Control Regulations Standard is satisfied, nor would it alter the Certificate Holder’s ability to comply with Site Certificate Conditions.</p> | <p>Not Applicable: GEN-NC-01: Site-specific Noise Exceedance Mitigation Plans GEN-NC-02: Attachment X-7 update and notification GEN-NC-03: Corona noise minimization OPR-NC-01: Foul weather ambient antidegradation standards exception OPR-NC-02: Foul weather ambient antidegradation standards variation</p> |
| <p>ORS 196.795-990 Removal Fill Law</p> | <p>The Certificate Holder submitted a Site Rehabilitation Plan in March 2023 (IPC, 2023b) that established criteria and procedure for the reclamation process of wetland vegetation and a Compensatory Wetland and Non-Wetland Mitigation Plan (CWNWMP) in July 2024.</p> <p>The Proposed Changes require the installation of timber matting with seasonal restrictions (Type 4 crossing) at two locations: (1) intermittent stream (UM-SW-STR-010) and (2) wetland (UM-W-1806). (Tetra Tech, 2025).</p> <p>Impacts to both aquatic features were submitted as a part of a revised Joint Permit Application (JPA) and approved by DSL on February 7, 2025, under removal-fill permit # 61621RF Modified. All work performed will be subject to all stipulations, terms, and conditions of the DSL removal-fill permit. Impacts to the intermittent stream and wetland resulting from the Proposed Changes will be mitigated by the 2023 Site Rehabilitation plan and 2024 CWNWMP.</p> | <p>GEN-RF-01: Site Rehabilitation Plan submission GEN-RF-02: CWNWMP submission GEN-RF-04: Removal-fill permit compliance PRE-RF-01: Wetland delineation reports submission PRE-RF-02: JPA update</p> <p>Not Applicable: GEN-RF-03: DELETED With RFA1</p> |

**TABLE 2.
STANDARDS, LAWS, AND SITE CERTIFICATE EVALUATION**

| Standard | Evaluation | Related Site Certificate Conditions |
|----------|--|-------------------------------------|
| | The Proposed Changes would not affect the Council's earlier findings that the Removal Fill Law Standard is satisfied and does not alter the Certificate Holder's ability to comply with the Site Certificate Conditions. | |

CONCLUSION

The Certificate Holder provides this ADR to demonstrate that the Proposed Changes do not fall under factors outlined in OAR 345-027-0350 that would require an amendment to the Site Certificate. The Proposed Changes are located entirely within the existing Site Boundary and would not impair the Certificate Holder's ability to comply with the Site Certificate conditions or create the need for other conditions. Therefore, the Certificate Holder requests that ODOE provide a written determination that no amendment to the Site Certificate is required for the Proposed Changes.

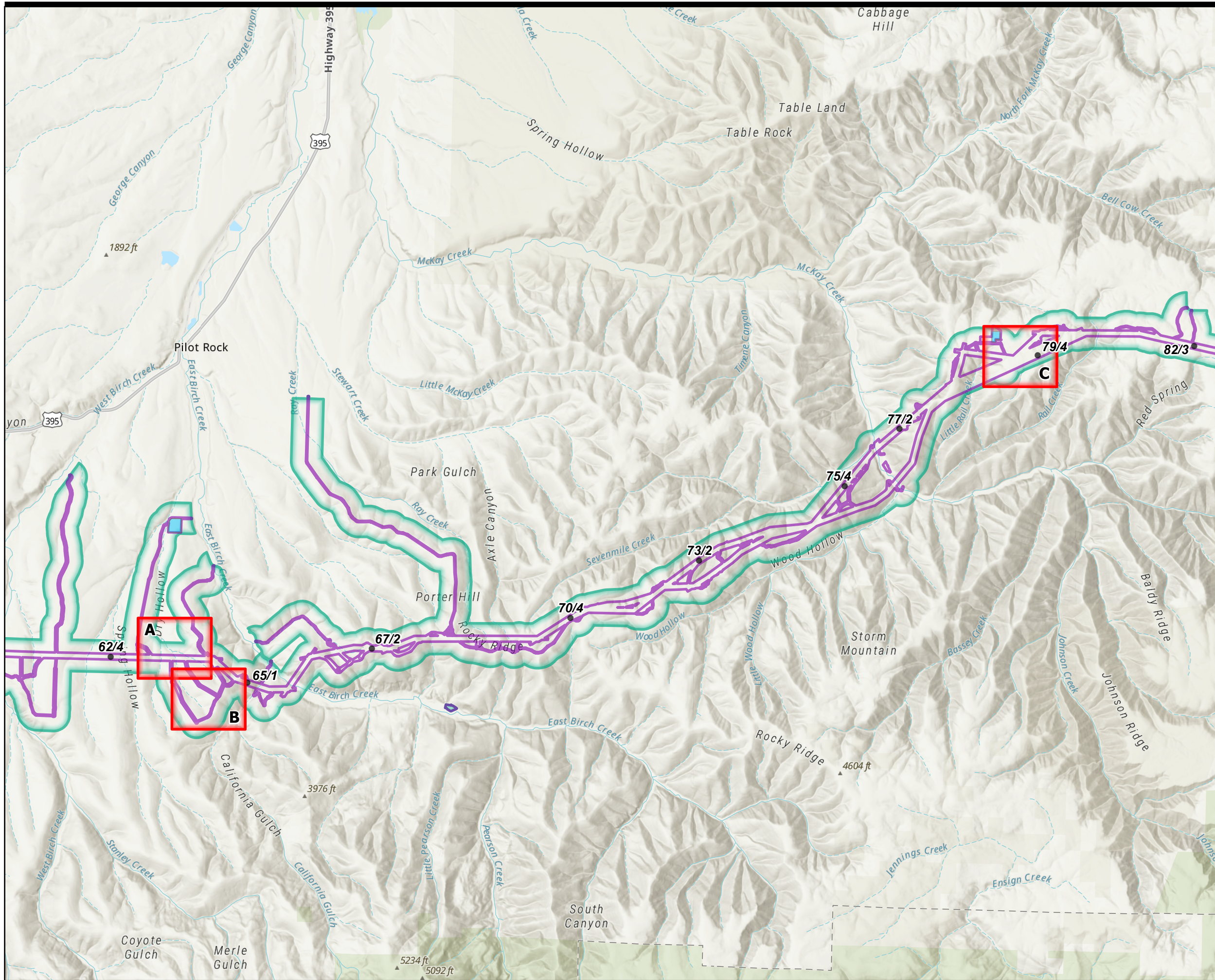
REFERENCES

- Energy Facility Siting Council of the State of Oregon (EFSC). (2024). Second Amended Site Certificate for Boardman to Hemingway Transmission Line. Retrieved October 6, 2025, from <https://www.oregon.gov/energy/facilities-safety/facilities/Facilities%20library/2024-08-23-B2HAMD2-Final-Order-Attachments.pdf>
- Eocene Environmental Group. (2024). 2024 Rare Plant Survey Report: Boardman to Hemingway Transmission Line Project.
- Eocene Environmental Group. (2025). Boardman to Hemingway Transmission Line Project – Pre-Construction Class III Intensive Level Cultural Resources Survey. BLM Report VD-24- 08. SHPO Project #08-2232. Submitted to BLM May 2025. Revised June 2025
- Eocene Environmental. (2026). Boardman to Hemingway Transmission Line Project—Pre-Construction Class III Intensive Level Cultural Resources Survey – Addendum I, Morrow, Umatilla, Union, Baker, and Malheur Counties, Oregon. BLM Report V025-15. SHPO Project #08-2232. Submitted to BLM January 2026.
- Idaho Power Company. (2023a). B2H OPS GEN-LU-11 Agricultural Lands Assessment and Mitigation Plan.
- Idaho Power Company. (2023b) B2H OPS GEN-RF-01 Site Rehabilitation Plan
- Idaho Power Company. (2024). B2H OPS GEN-FW-04 Fish and Wildlife Habitat Mitigation Plan.
- Idaho Power Company. (2025). B2H OPS GEN-FW-01 Category 2 Native Grasslands Reclamation, Revegetation, and Mitigation Plan.
- Oregon Department of Environmental Quality (ODEQ). (2025) National Pollutant Discharge Elimination System Construction Stormwater Discharge Permit.
- Oregon Department of Fish and Wildlife (ODFW). (2024). Boardman to Hemingway Transmission Line Project - ODFW Fish Passage Authorizations. Salem: Oregon Department of Fish and Wildlife (ODFW).
- Oregon Department of Fish and Wildlife (ODFW). (2025). Boardman to Hemingway Transmission Line Project - ODFW Fish Passage Authorizations. Salem: Oregon Department of Fish and Wildlife (ODFW).
- Shannon & Wilson, Inc. (2024). Geotechnical Engineering Report - Umatilla County Boardman to Hemingway Transmission Line Project: Umatilla County, Oregon. Lake Oswego, Oregon.
- Tetra Tech and Eocene Environmental. (2024). Boardman to Hemingway Transmission Line Project—Initial Class III Intensive Level Cultural Resources Survey. BLM Report VD-22-01. SHPO Project #08-2232. Submitted to BLM August 2024.
- Tetra Tech. (2023a). Boardman to Hemingway Transmission Line Project 2023 Noxious Weed Survey.
- Tetra Tech. (2023b). Boardman to Hemingway Transmission Line Project 2022 Special Status Plants Survey.

Tetra Tech. (2025). Boardman to Hemingway Transmission Line Project Fish Passage Plans and Designs.

APPENDIX A

FACILITY MAPS



Legend

- ▬ Proposed Change
- Facility Features**
- Structures
- Multi Use Areas
- ▭ EFSC Micrositing Corridor
- ▭ EFSC Site Boundary

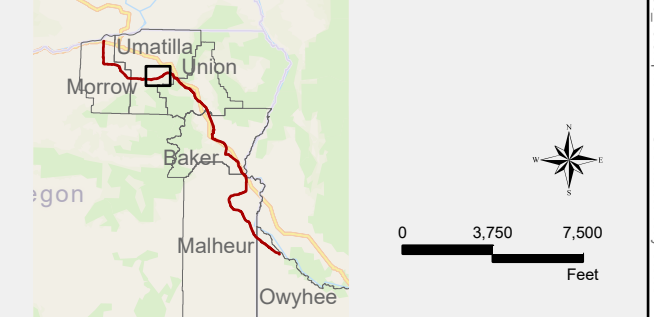
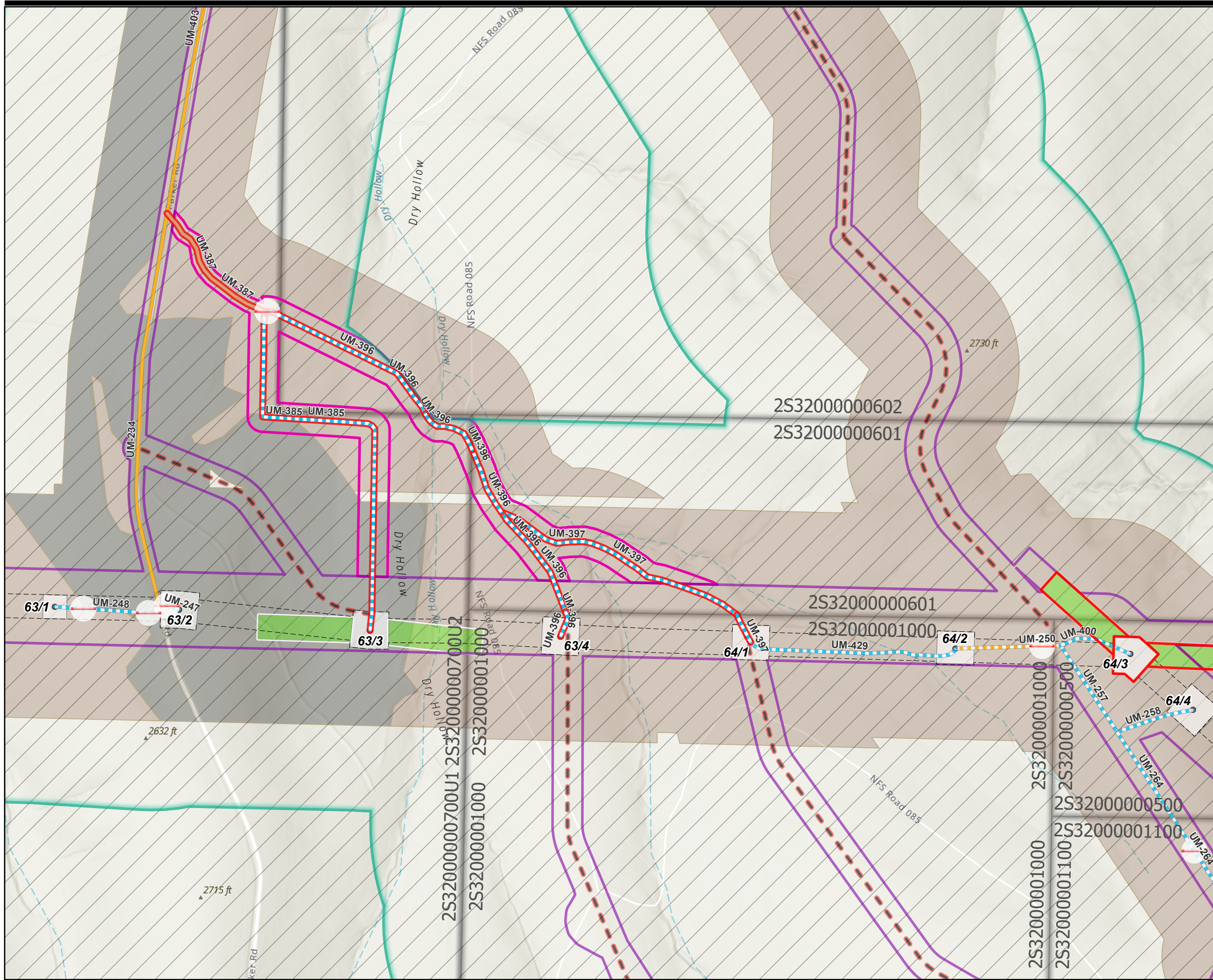


Figure 1. Facility Overview Map
Boardman to Hemingway 500kV Transmission Line (B2H)
 Addition of 16 Access Roads and PT Site Shift Between Structures 63/1-79/4
 Amendment Determination Request

NAD 1983 UTM Zone 11N 4/2/2026
 Project Features IFC Rev2d, 20251013





Legend

Proposed Change

- Access Road Addition (New, Bladed)
- Access Road Addition (Existing, 70-100% Modification)
- PT Site Shift
- Micrositing Corridor Expansion

Facility Features

- Structures
- Right-of-way (ROW)
- EFSC Micrositing Corridor
- EFSC Site Boundary
- Fence Crossing - Gated

Access Roads

- Existing Road, Substantial Modification, 21-70% Improvements
- Existing Road, Substantial Modification, 71-100% Improvements
- New Road, Bladed
- New Road, Primitive
- Access Roads (Retired)

Structural Work Areas

- Pulling and Tensioning
- Structure Work Area

Agricultural Use

- Rangeland
- Road/Transport
- Unknown Crop

Land Use Zoning

- Exclusive Farm Use

Land Ownership

- Parcels

Proposed Change

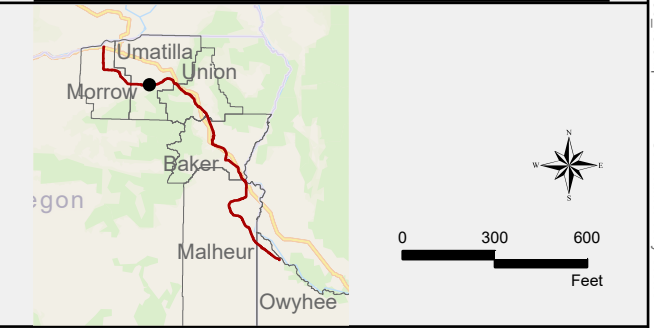
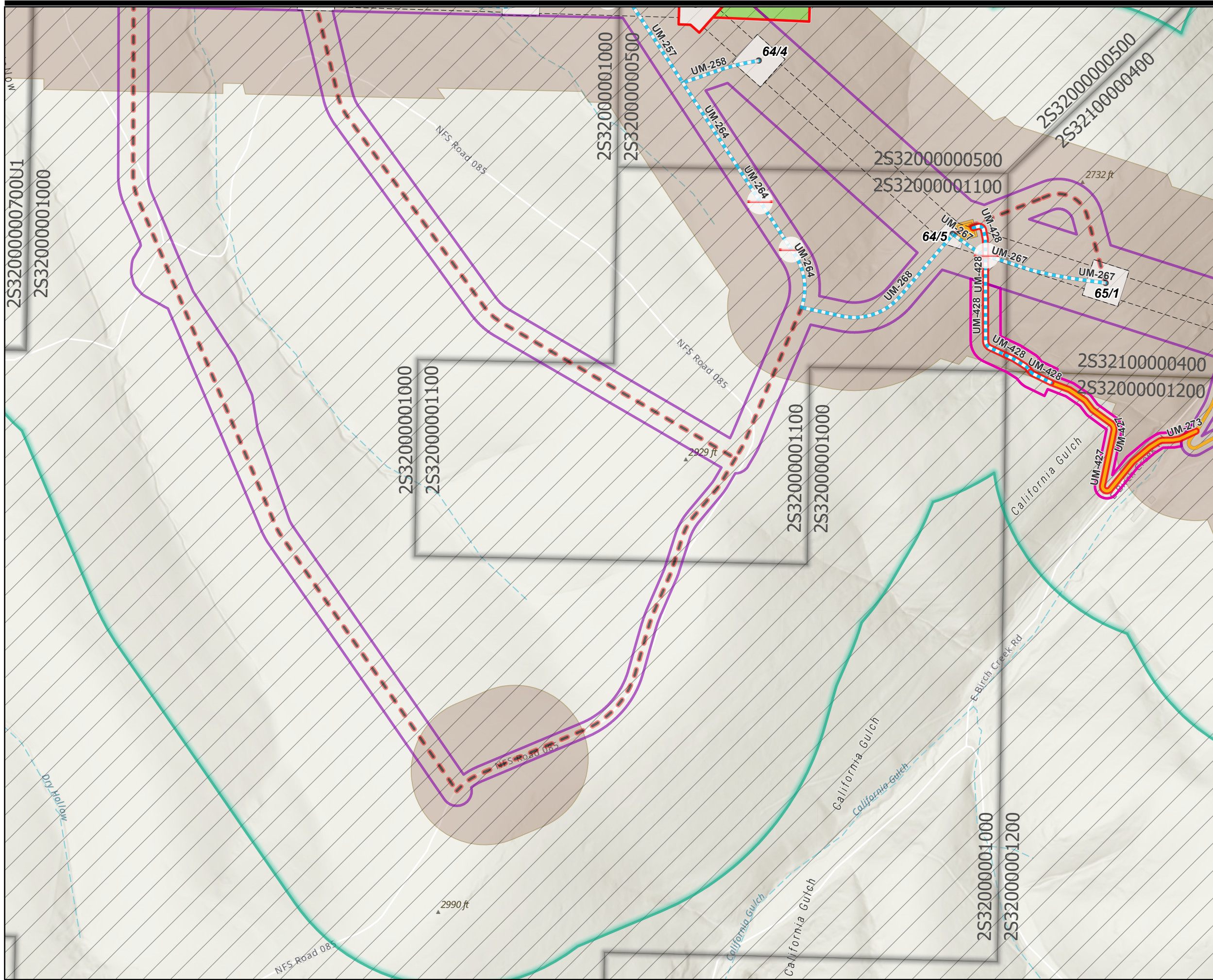


Figure 2A. Land Use Map

Boardman to Hemingway 500kV Transmission Line (B2H)
 Addition of 16 Access Roads and PT Site Shift Between Structures 63/1-79/4
 Amendment Determination Request

NAD 1983 UTM Zone 11N 4/2/2026

Project Features IFC Rev2d, 20251013



Legend

Proposed Change

- Access Road Addition (New, Bladed)
- Access Road Addition (Existing, 21-70% Modification)
- PT Site Shift
- Micrositing Corridor Expansion

Facility Features

- Structures
- Right-of-way (ROW)
- EFSC Micrositing Corridor
- EFSC Site Boundary
- Fence Crossing - Gated

Access Roads

- Existing Road, Substantial Modification, 21-70% Improvements
- New Road, Bladed
- Access Roads (Retired)

Structural Work Areas

- Communication Station
- Pulling and Tensioning
- Structure Work Area

Agricultural Use

- Rangeland
- Road/Transport

Land Use Zoning

- Exclusive Farm Use

Land Ownership

- Parcels
- Proposed Change

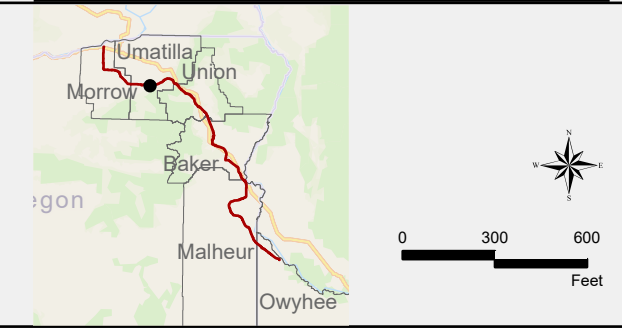


Figure 2B. Land Use Map

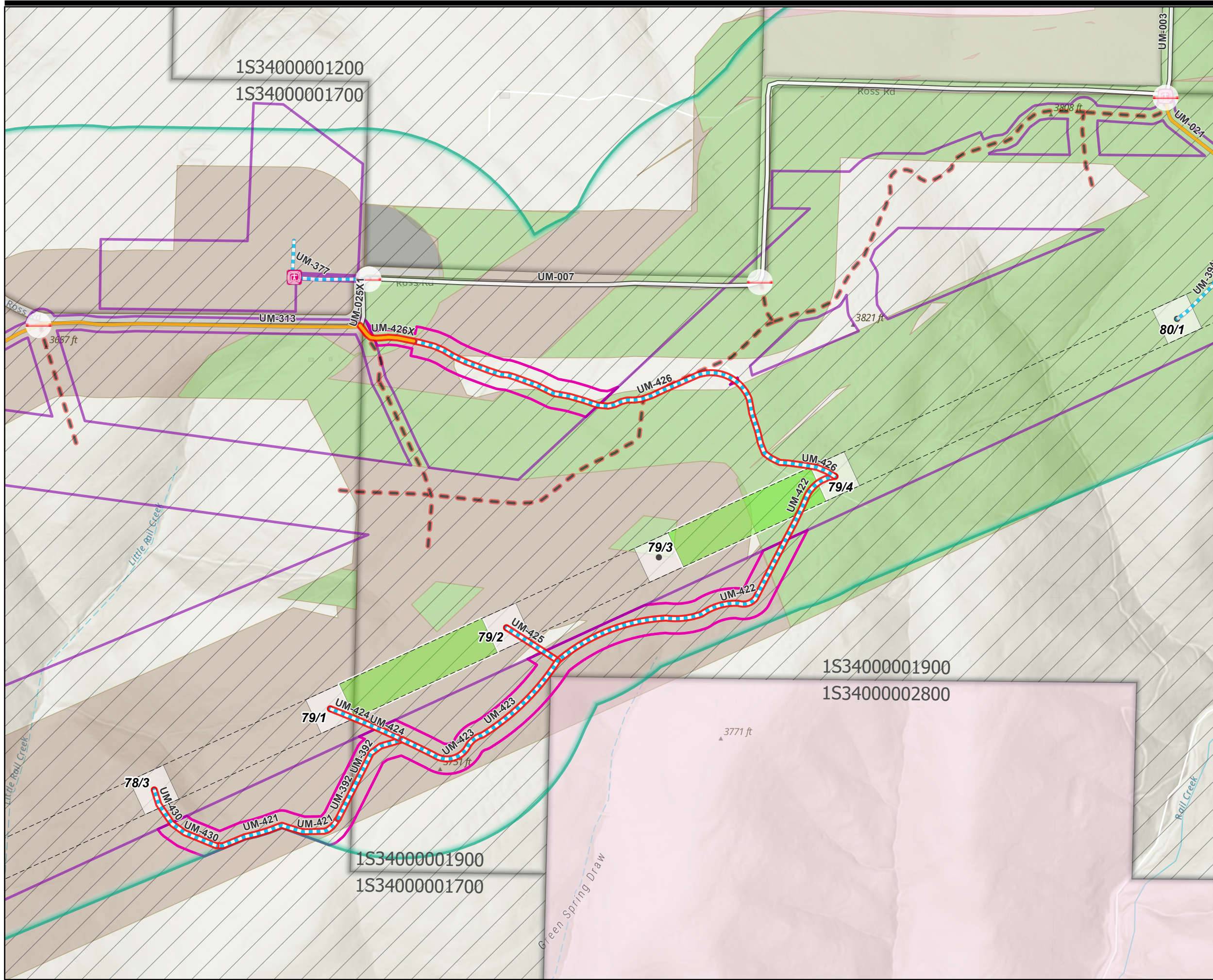
Boardman to Hemingway 500kV Transmission Line (B2H)

Addition of 16 Access Roads and PT Site Shift Between Structures 63/1-79/4
Amendment Determination Request

NAD 1983 UTM Zone 11N 4/2/2026

Project Features IFC Rev2d, 20251013





Legend

Proposed Change

- Access Road Addition (New, Bladed)
- Access Road Addition (Existing, 21-70% Modification)
- Micrositing Corridor Expansion

Facility Features

- Structures
- Weed Wash Stations
- Right-of-way (ROW)
- EFSC Micrositing Corridor
- EFSC Site Boundary
- Fence Crossing - Gated

Access Roads

- Existing Road, No Substantial Modification, 0-20% Improvements
- Existing Road, Substantial Modification, 21-70% Improvements
- New Road, Bladed
- Access Roads (Retired)

Structural Work Areas

- Pulling and Tensioning
- Structure Work Area

Agricultural Use

- Rangeland
- Rangeland/timber
- Road/Transport
- Unknown Crop

Land Use Zoning

- Exclusive Farm Use
- Grazing/Farm (GF)

Land Ownership

- Parcels
- Proposed Change

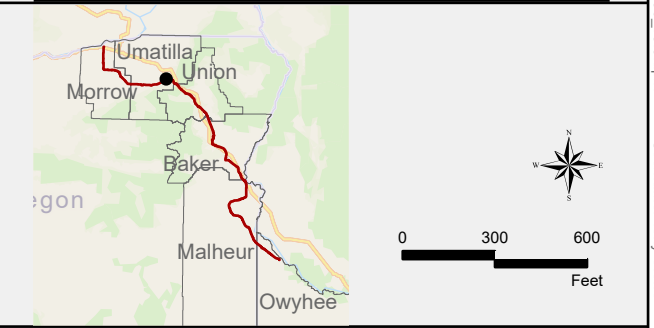
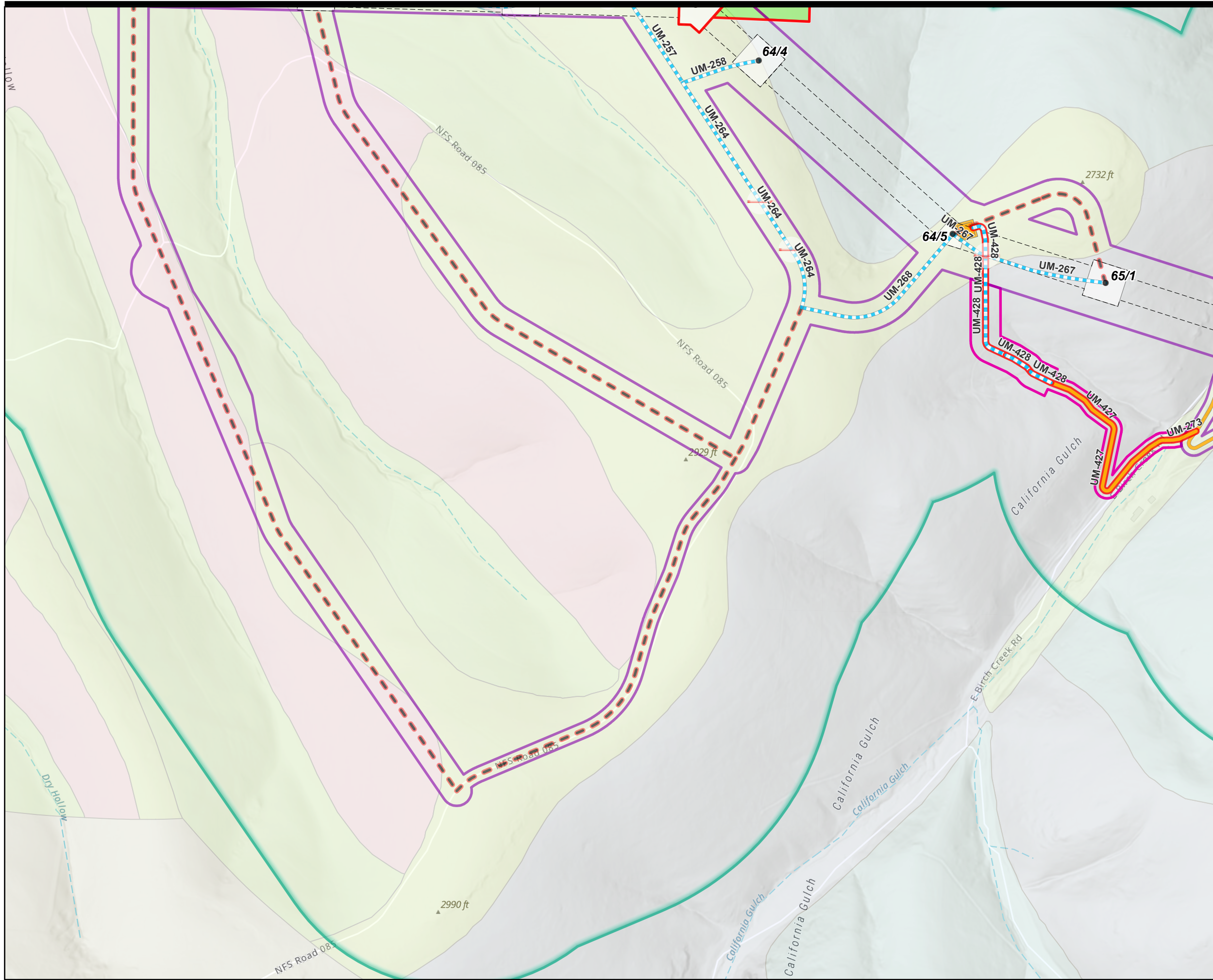


Figure 2C. Land Use Map

Boardman to Hemingway 500kV Transmission Line (B2H)
 Addition of 16 Access Roads and PT Site Shift Between Structures 63/1-79/4
 Amendment Determination Request

NAD 1983 UTM Zone 11N 4/2/2026

Project Features IFC Rev2d, 20251013



Legend

Proposed Change

- Access Road Addition (New, Bladed)
- Access Road Addition (Existing, 21-70% Modification)
- PT Site Shift
- Micrositing Corridor Expansion

Facility Features

- Structures
- Right-of-way (ROW)
- EFSC Micrositing Corridor
- EFSC Site Boundary
- Fence Crossing - Gated

Access Roads

- Existing Road, Substantial Modification, 21-70% Improvements
- New Road, Bladed
- Access Roads (Retired)

Structural Work Areas

- Communication Station
- Pulling and Tensioning
- Structure Work Area

Soil Data

- Buckcreek-Gwin association, 45 to 70 percent slopes
- Gurdane silty clay loam, 25 to 45 percent slopes
- Gurdane-Rockly complex, 2 to 20 percent slopes
- Gwin-Rock outcrop complex, 40 to 70 percent slopes
- Gwinly very cobbly silt loam, 7 to 40 percent slopes
- Xerofluvents, 0 to 3 percent slopes

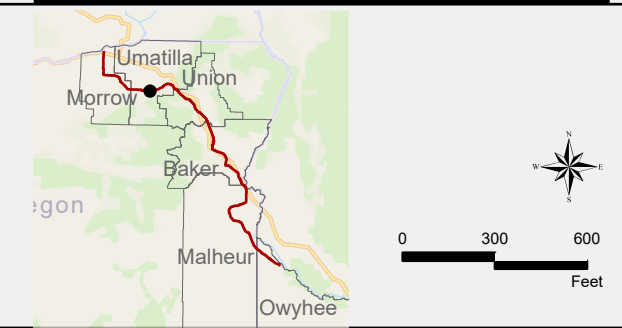
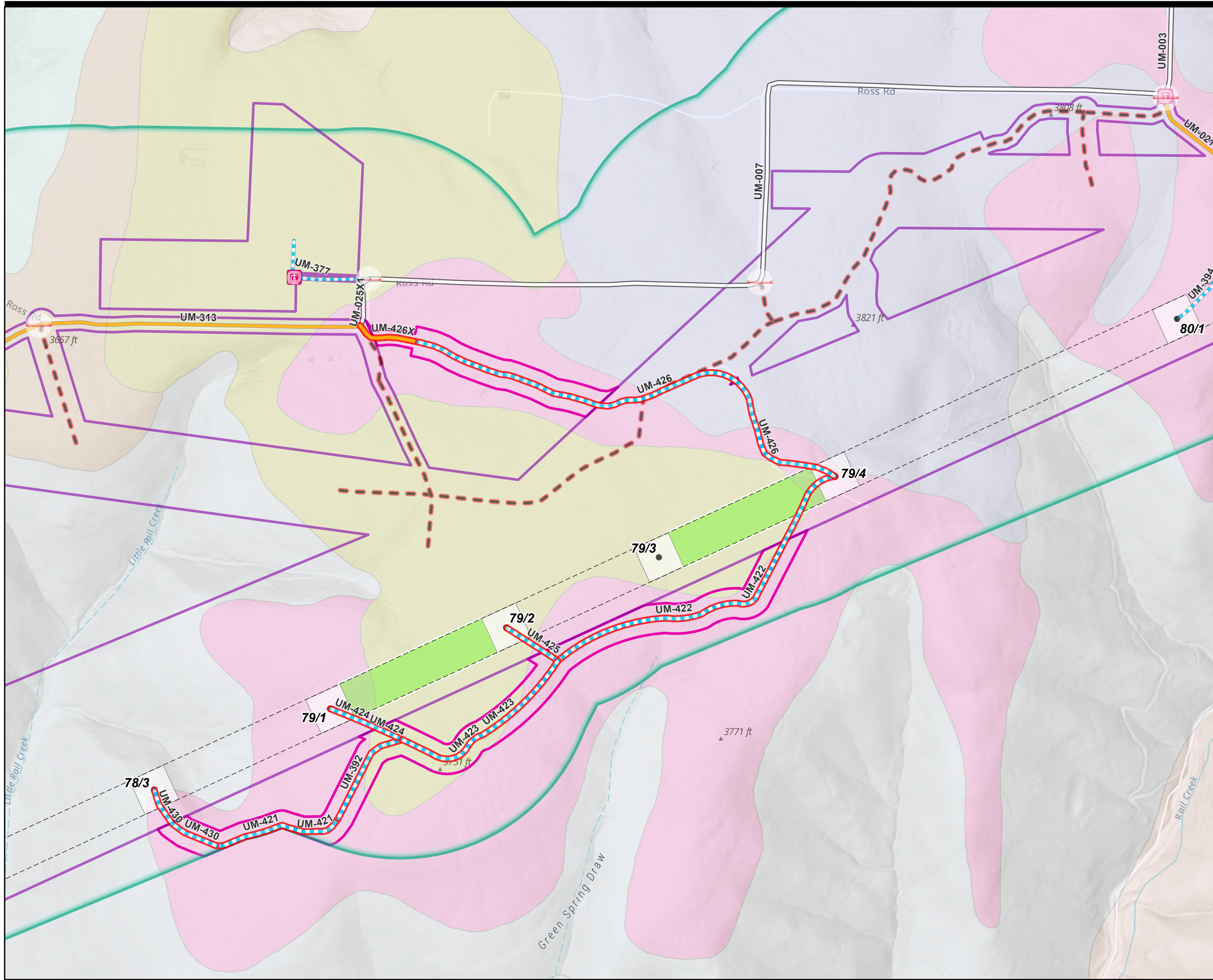


Figure 3B. Soil Data Map
Boardman to Hemingway 500kV Transmission Line (B2H)
 Addition of 16 Access Roads And Micrositing Corridor Expansion Between Structures 63/1-79/4
 Amendment Determination Request

NAD 1983 UTM Zone 11N 4/2/2026

Project Features IFC Rev2d, 20251013





Legend

Proposed Change

- Access Road Addition (New, Bladed)
- Access Road Addition (Existing, 21-70% Modification)
- Micrositing Corridor Expansion

Facility Features

- Structures
- Weed Wash Stations
- Right-of-way (ROW)
- EFSC Micrositing Corridor
- EFSC Site Boundary
- Fence Crossing - Gated

Access Roads

- Existing Road, No Substantial Modification, 0-20% Improvements
- Existing Road, Substantial Modification, 21-70% Improvements
- New Road, Bladed
- Access Roads (Retired)

Structural Work Areas

- Pulling and Tensioning
- Structure Work Area

Soil Data

- Albee-Bocker-Anatone complex, 2 to 15 percent slopes
- Buckcreek-Gwin association, 45 to 70 percent slopes
- Gwin-Rock outcrop complex, 40 to 70 percent slopes
- Klicker ashy silt loam, 2 to 20 percent slopes
- Umatilla-Kahler-Gwin association, 35 to 70 percent slopes
- Waha silty clay loam, 1 to 12 percent slopes
- Waha-Rockly complex, 2 to 20 percent slopes

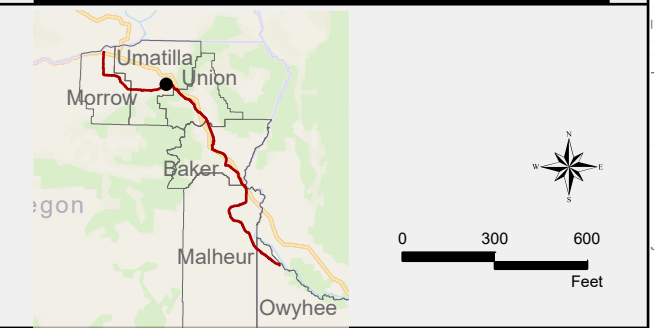
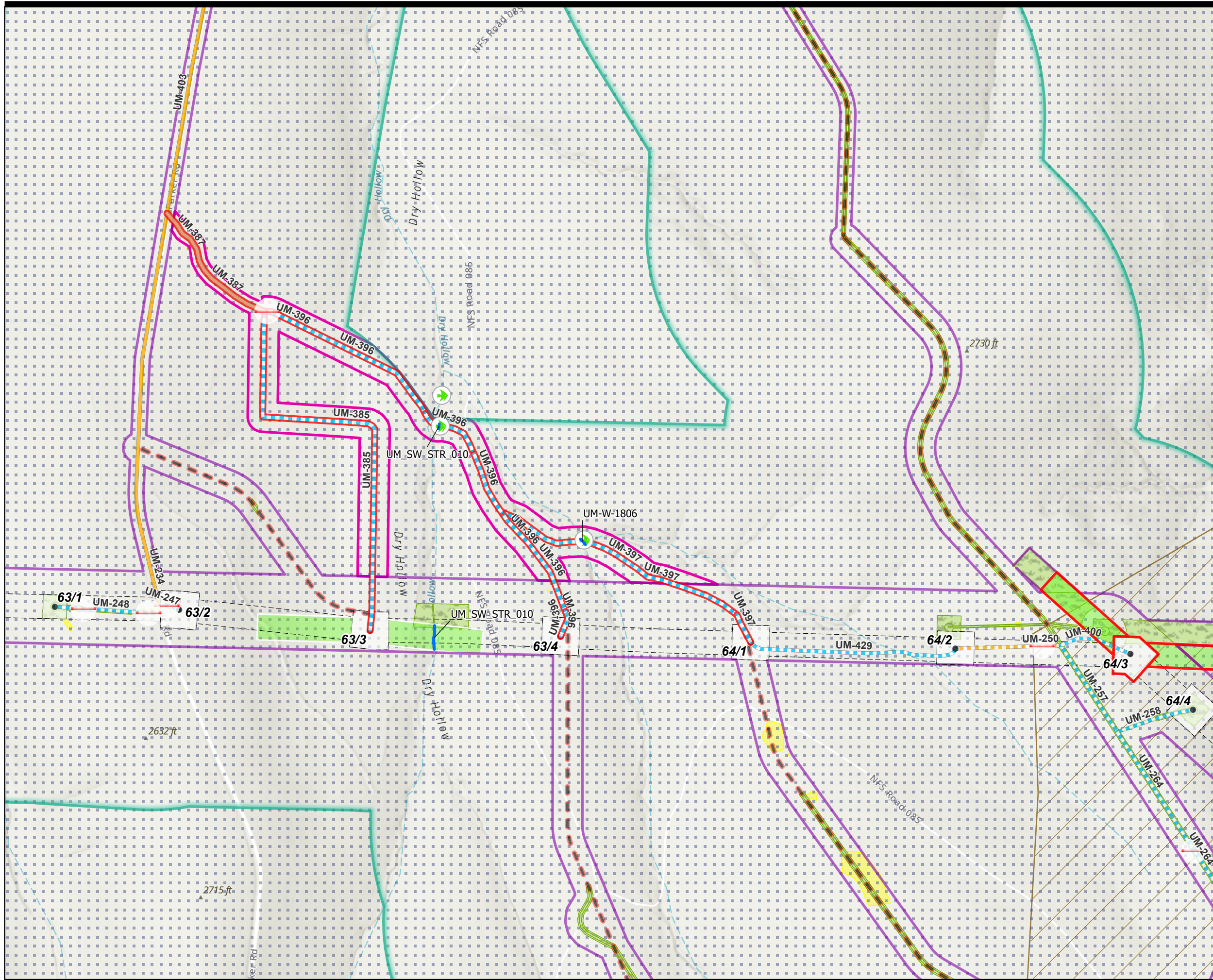


Figure 3C. Soil Data Map
Boardman to Hemingway 500kV Transmission Line (B2H)
 Addition of 16 Access Roads And Micrositing Corridor Expansion Between Structures 63/1-79/4
 Amendment Determination Request

NAD 1983 UTM Zone 11N 4/2/2026

Project Features IFC Rev2d, 20251013





Legend

Proposed Change

- Access Road Addition (New, Bladed)
- Access Road Addition (Existing 71-100% Modification)
- PT Site Shift
- Micrositing Corridor Expansion

Facility Features

- Structures
- Right-of-way (ROW)
- EFSC Micrositing Corridor
- EFSC Site Boundary
- Fence Crossing - Gated

Access Roads

- Existing Road, Substantial Modification, 21-70% Improvements
- Existing Road, Substantial Modification, 71-100% Improvements
- New Road, Bladed
- New Road, Primitive
- Access Roads (Retired)

Structural Work Areas

- Pulling and Tensioning
- Structure Work Area

Resources

- Fish Passage Approved
- Permitted Wetland/Stream Impacts
- Elk Winter Range
- Mule Deer Winter Range
- Lawrence's milkvetch
- Native Grasslands

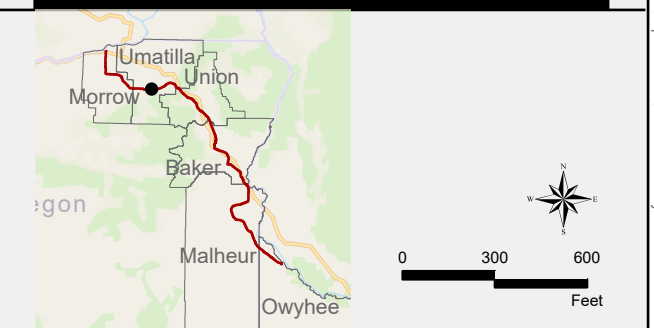
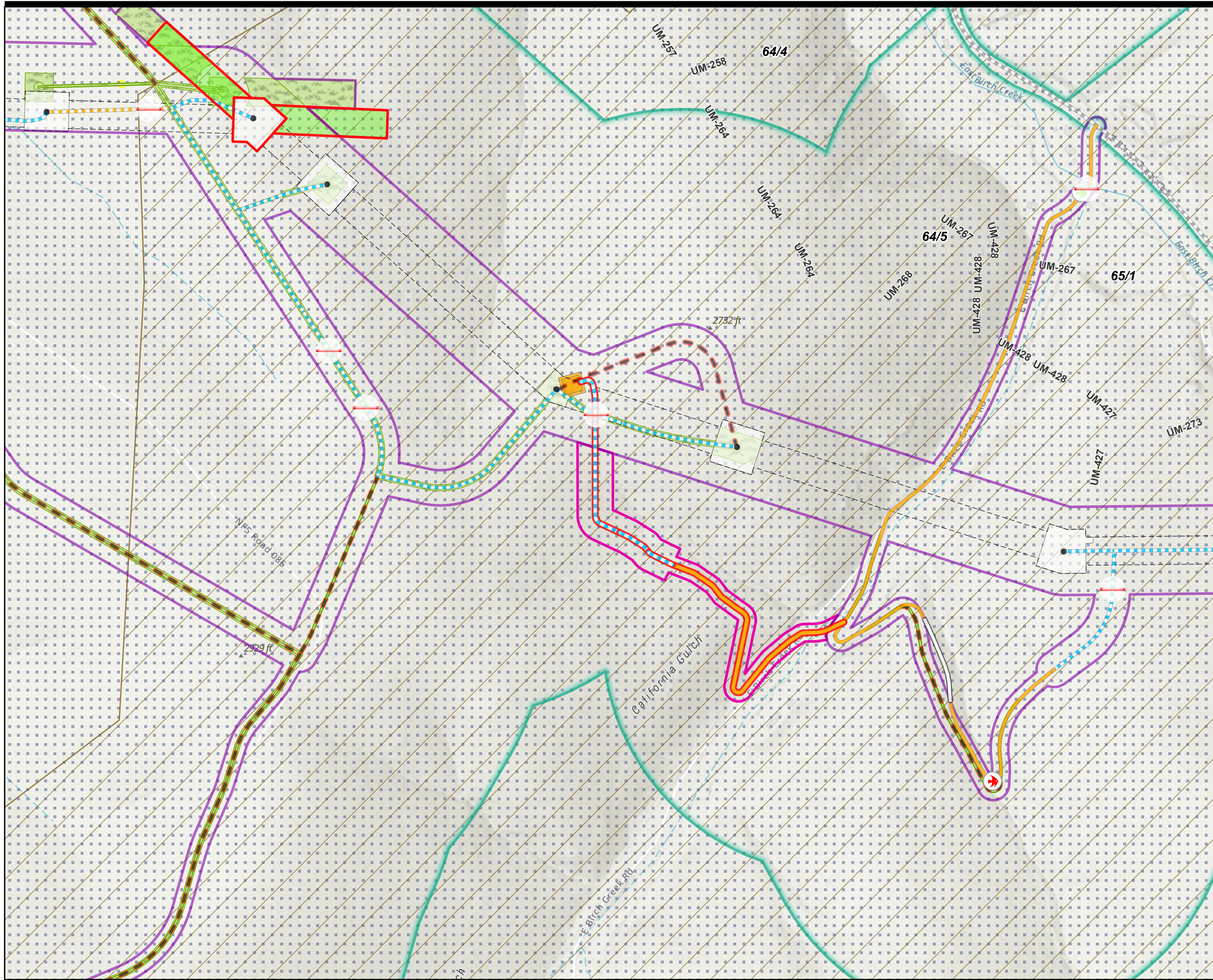


Figure 4A. Biological Resource Map
Boardman to Hemingway 500kV Transmission Line (B2H)
 Addition of 16 Access Roads And Micrositing Corridor Expansion Between Structures 63/1-79/4
 Amendment Determination Request

NAD 1983 UTM Zone 11N 4/2/2026

Project Features IFC Rev2d, 20251013





Legend

Proposed Change

- Access Road Addition (New, Bladed)
- Access Road Addition (Existing, 21-70% Modification)
- PT Site Shift
- Micrositing Corridor Expansion

Facility Features

- Structures
- Right-of-way (ROW)
- EFSC Micrositing Corridor
- EFSC Site Boundary
- Fence Crossing - Gated

Access Roads

- Existing Road, Substantial Modification, 21-70% Improvements
- New Road, Bladed
- Access Roads (Retired)

Structural Work Areas

- Communication Station
- Pulling and Tensioning
- Structure Work Area

Resources

- Fish Bearing Streams
- Elk Winter Range
- Mule Deer Winter Range
- Lawrence's milkvetch
- Native Grasslands

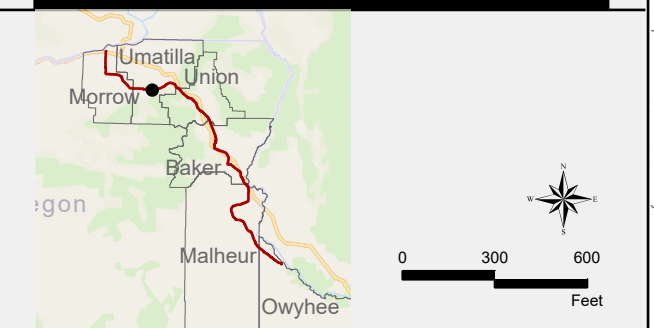
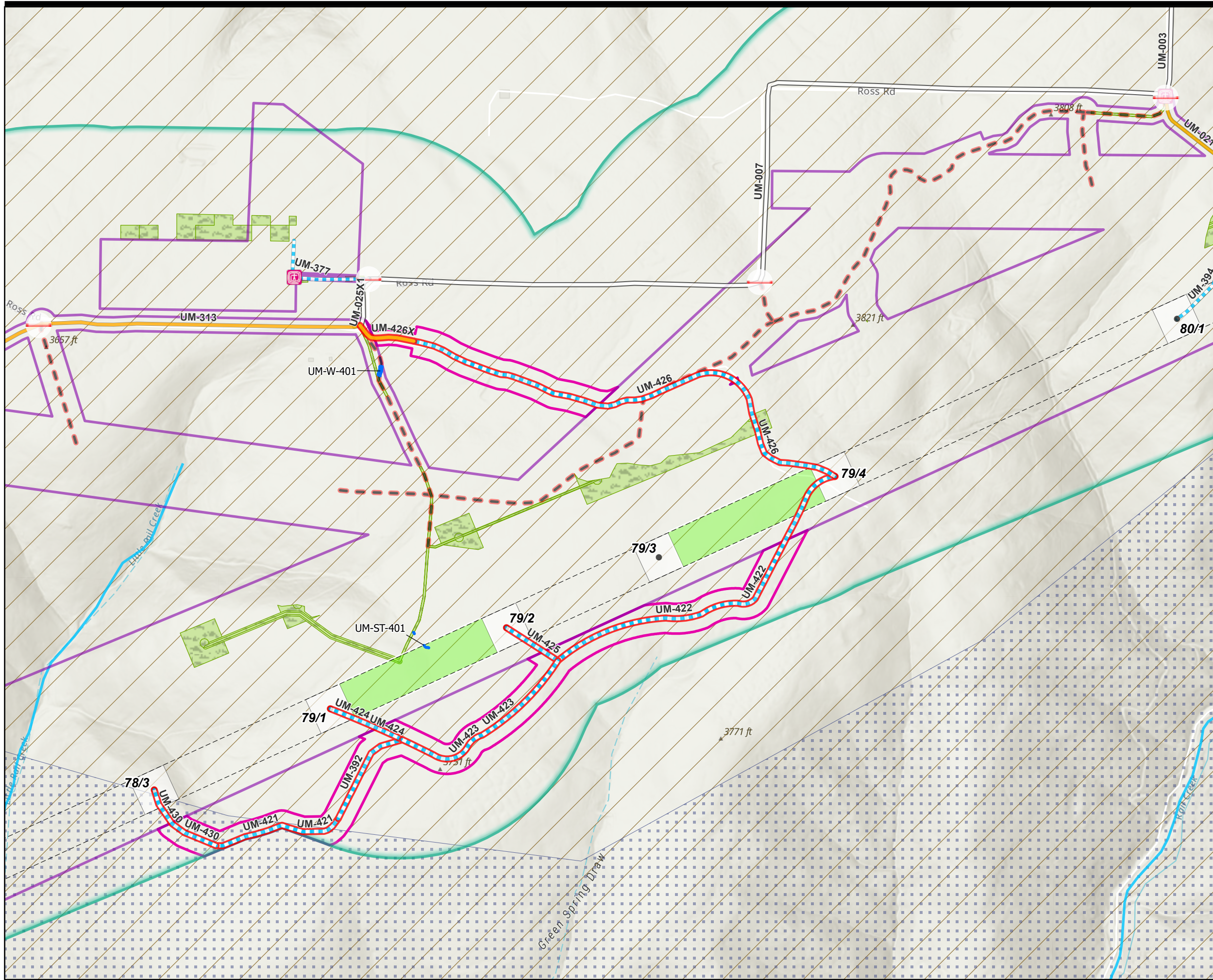


Figure 4B. Biological Resource Map
Boardman to Hemingway 500kV Transmission Line (B2H)
 Addition of 16 Access Roads And Micrositing Corridor Expansion Between Structures 63/1-79/4
 Amendment Determination Request

NAD 1983 UTM Zone 11N 4/2/2026

Project Features IFC Rev2d, 20251013





Legend

Proposed Change

- Access Road Addition (New, Bladed)
- Access Road Addition (Existing, 21-70% Modification)
- Micrositing Corridor Expansion

Facility Features

- Structures
- Weed Wash Stations
- Right-of-way (ROW)
- EFSC Micrositing Corridor
- EFSC Site Boundary
- Fence Crossing - Gated

Access Roads

- Existing Road, No Substantial Modification, 0-20% Improvements
- Existing Road, Substantial Modification, 21-70% Improvements
- New Road, Bladed
- Access Roads (Retired)

Structural Work Areas

- Pulling and Tensioning
- Structure Work Area

Resources

- Fish Bearing Streams
- Permitted Wetland/Stream Impacts
- Elk Winter Range
- Mule Deer Winter Range
- Native Grasslands

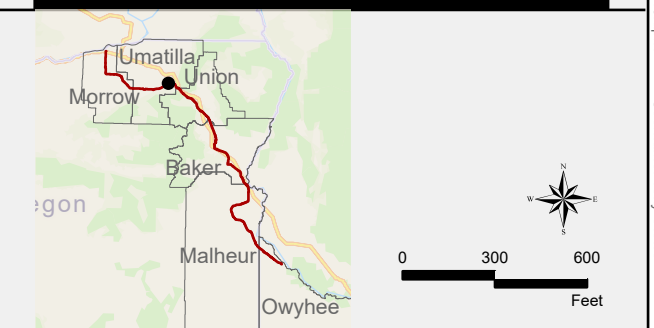
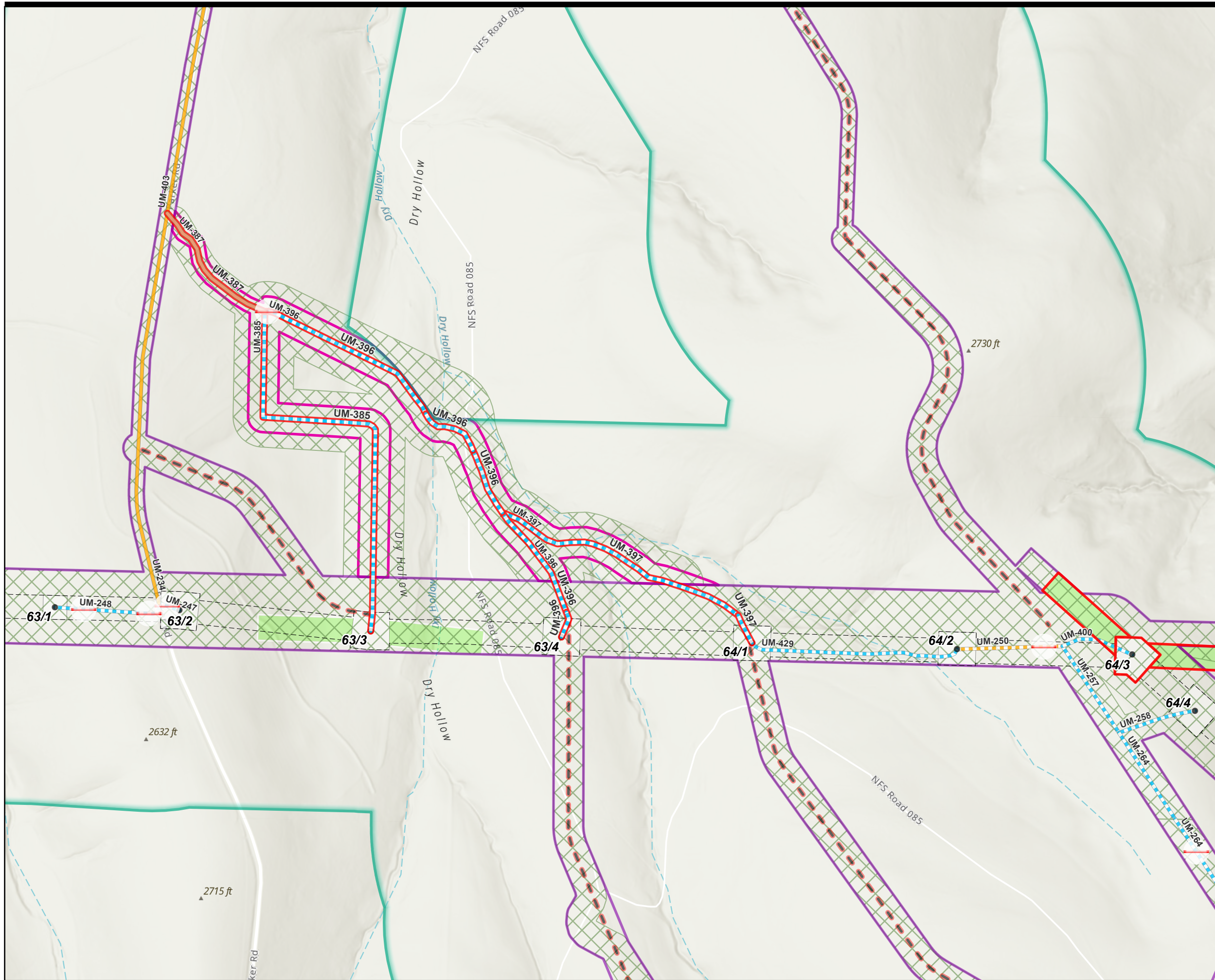


Figure 4C. Biological Resource Map
Boardman to Hemingway 500kV Transmission Line (B2H)
 Addition of 16 Access Roads And Micrositing Corridor Expansion Between Structures 63/1-79/4
 Amendment Determination Request

NAD 1983 UTM Zone 11N 4/2/2026

Project Features IFC Rev2d, 20251013





Legend

Proposed Change

- Access Road Addition (New, Bladed)
- Access Road Addition (Existing 71-100% Modification)
- PT Site Shift
- Micrositing Corridor Expansion

Facility Features

- Structures
- Right-of-way (ROW)
- EFSC Micrositing Corridor
- EFSC Site Boundary
- Fence Crossing - Gated

Access Roads

- Existing Road, Substantial Modification, 21-70% Improvements
- Existing Road, Substantial Modification, 71-100% Improvements
- New Road, Bladed
- New Road, Primitive
- Access Roads (Retired)

Structural Work Areas

- Pulling and Tensioning
- Structure Work Area

Survey Sections

- SSP and Noxious Weeds

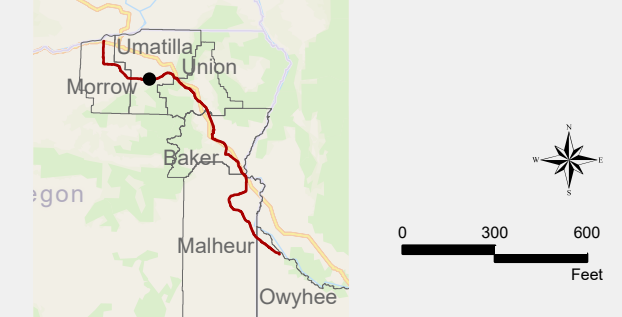
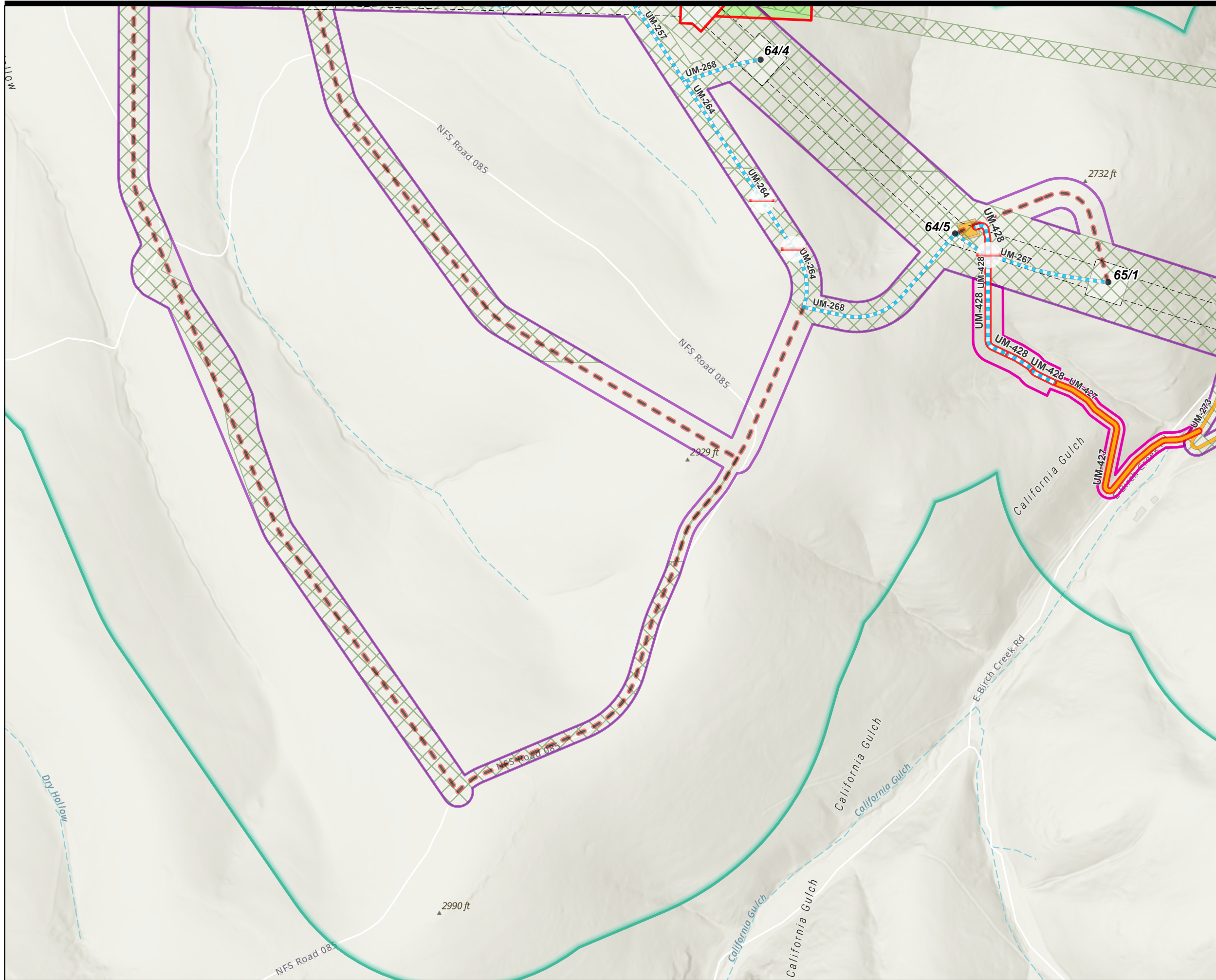


Figure 5A. Survey Sections
Boardman to Hemingway 500kV Transmission Line (B2H)
 Addition of 16 Access Roads and PT Site Shift Between Structures 63/1-79/4
 Amendment Determination Request

NAD 1983 UTM Zone 11N 4/2/2026

Project Features IFC Rev2d, 20251013





Legend

Proposed Change

- Access Road Addition (New, Bladed)
- Access Road Addition (Existing, 21-70% Modification)
- PT Site Shift
- Micrositing Corridor Expansion

Facility Features

- Structures
- Right-of-way (ROW)
- EFSC Micrositing Corridor
- EFSC Site Boundary
- Fence Crossing - Gated

Access Roads

- Existing Road, Substantial Modification, 21-70% Improvements
- New Road, Bladed
- Access Roads (Retired)

Structural Work Areas

- Communication Station
- Pulling and Tensioning
- Structure Work Area

Survey Sections

- SSP and Noxious Weeds

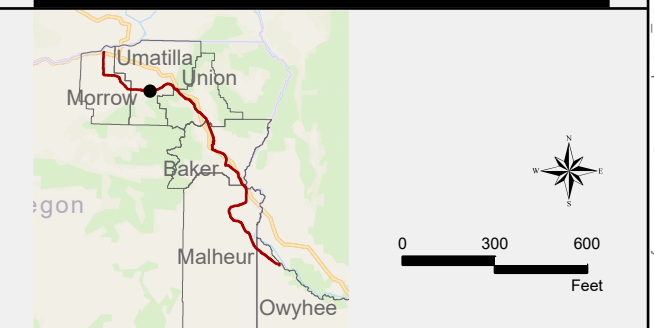
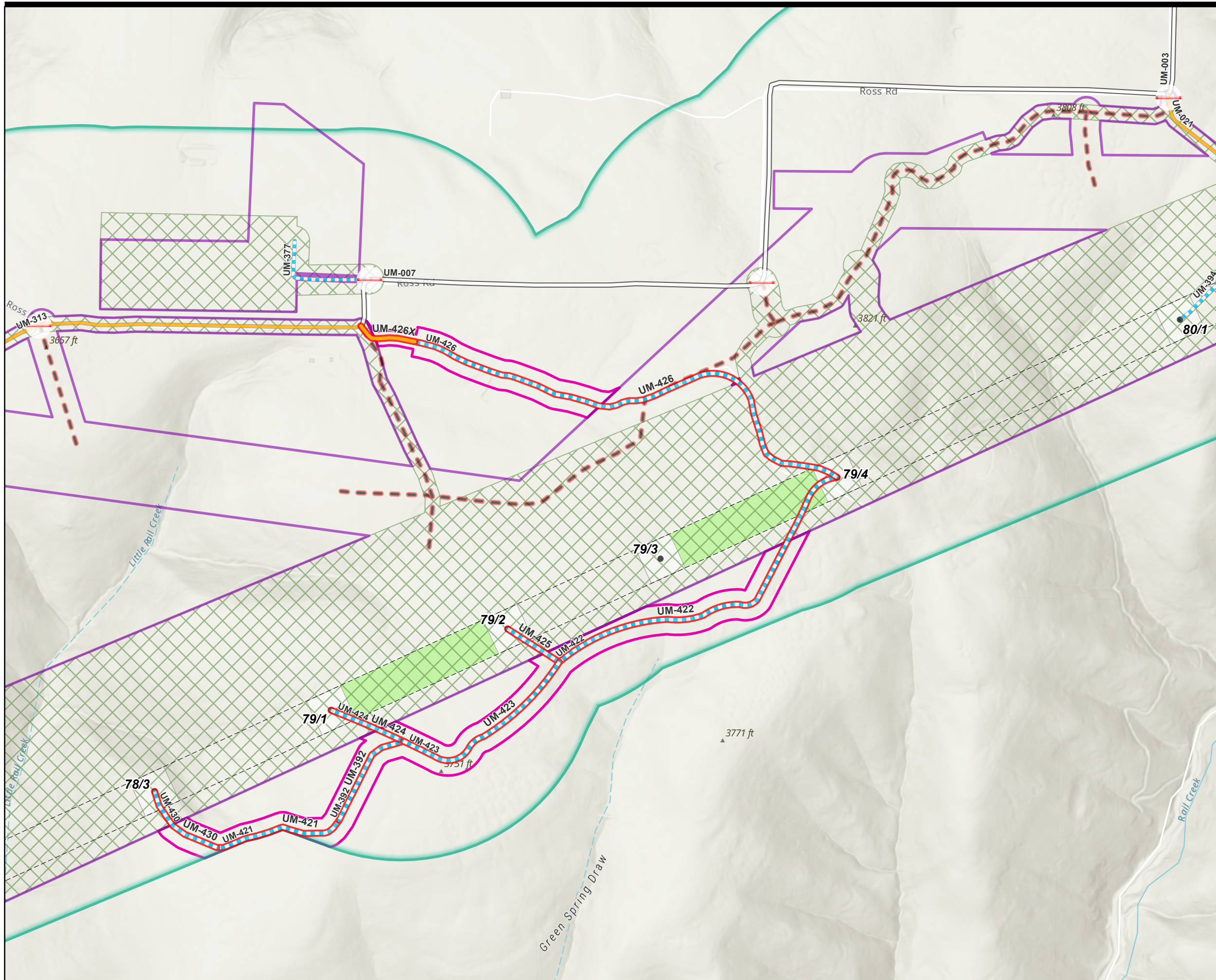


Figure 5B. Survey Sections
Boardman to Hemingway 500kV Transmission Line (B2H)
 Addition of 16 Access Roads and PT Site Shift Between Structures 63/1-79/4
 Amendment Determination Request

NAD 1983 UTM Zone 11N 4/2/2026

Project Features IFC Rev2d, 20251013





Legend

Proposed Change

- Access Road Addition (New, Bladed)
- Access Road Addition (Existing, 21-70% Modification)
- PT Site Shift
- Micrositing Corridor Expansion

Facility Features

- Structures
- Right-of-way (ROW)
- EFSC Micrositing Corridor
- EFSC Site Boundary
- Fence Crossing - Gated

Access Roads

- Existing Road, No Substantial Modification, 0-20% Improvements
- Existing Road, Substantial Modification, 21-70% Improvements
- New Road, Bladed
- Access Roads (Retired)

Structural Work Areas

- Pulling and Tensioning
- Structure Work Area

Survey Sections

- SSP and Noxious Weeds

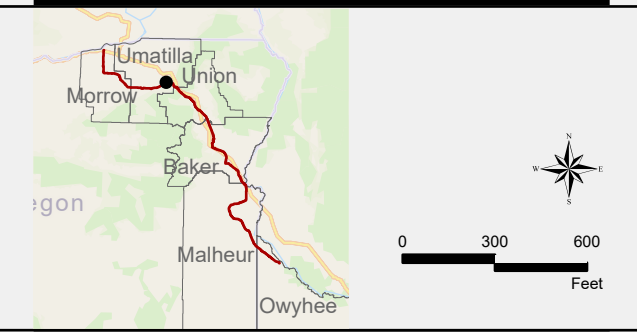
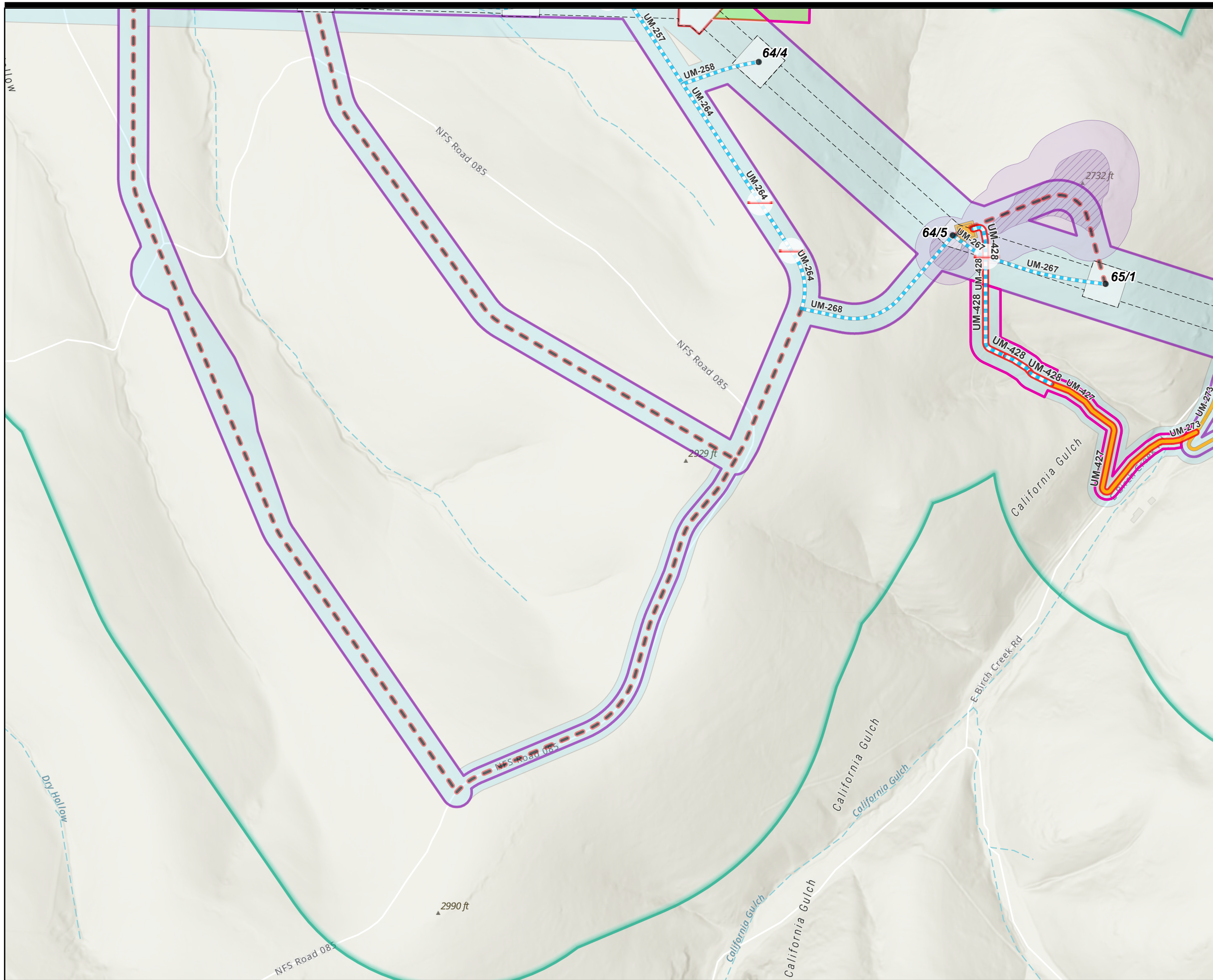


Figure 5C. Survey Sections
Boardman to Hemingway 500kV Transmission Line (B2H)
 Addition of 16 Access Roads and PT Site Shift Between Structures 63/1-79/4
 Amendment Determination Request

NAD 1983 UTM Zone 11N 4/2/2026
 Project Features IFC Rev2d, 20251013





Legend

Proposed Change

- Access Road Addition (New, Bladed)
- Access Road Addition (Existing, 21-70% Modification)
- PT Site Shift

Proposed Change

- Micrositing Corridor Expansion

Facility Features

- Structures
- Right-of-way (ROW)
- EFSC Micrositing Corridor
- EFSC Site Boundary
- Fence Crossing - Gated

Access Roads

- Existing Road, Substantial Modification, 21-70% Improvements
- New Road, Bladed
- Access Roads (Retired)

Structural Work Areas

- Communication Station
- Pulling and Tensioning
- Structure Work Area

Resources

- Cultural Resource Avoidance
- Cultural Resource Monitoring
- Cultural Resource Survey Area

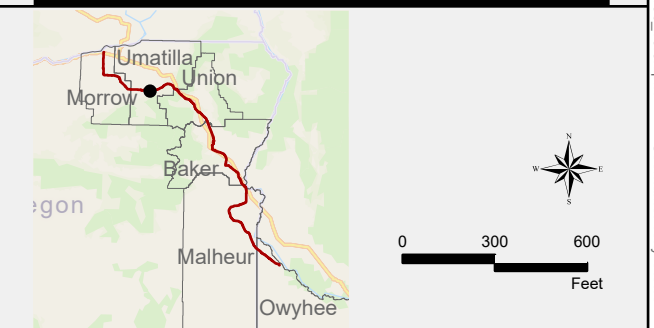


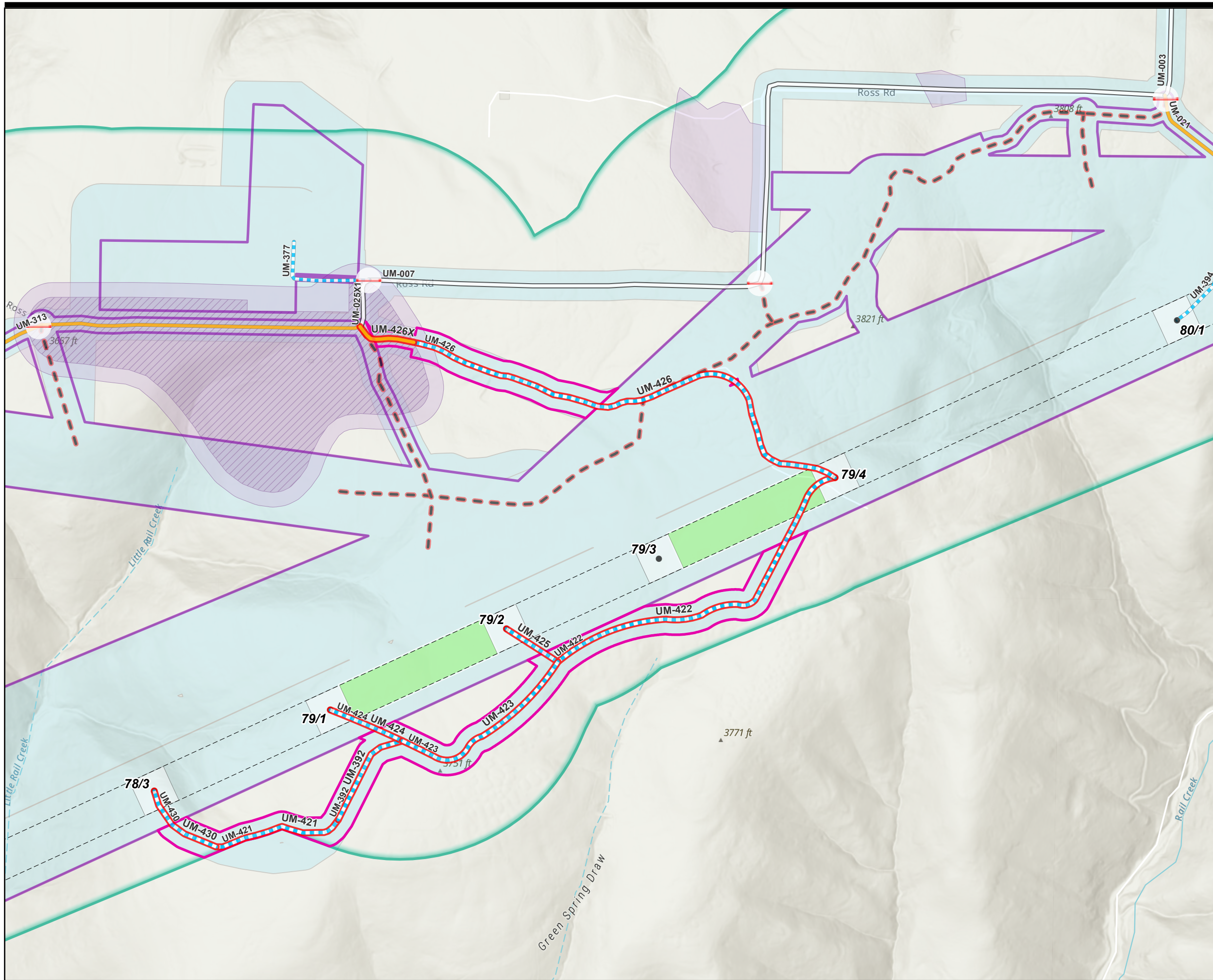
Figure 6B. Cultural Resource Map

Boardman to Hemingway 500kV Transmission Line (B2H)

Addition of 16 Access Roads and PT Site Shift Between Structures 63/1-79/4
Amendment Determination Request

NAD 1983 UTM Zone 11N 4/2/2026

Project Features IFC Rev2d, 20251013



Legend

Proposed Change

- Access Road Addition (New, Bladed)
- Access Road Addition (Existing, 21-70% Modification)
- Micrositing Corridor Expansion

Facility Features

- Structures
- Right-of-way (ROW)
- EFSC Micrositing Corridor
- EFSC Site Boundary
- Fence Crossing - Gated

Access Roads

- Existing Road, No Substantial Modification, 0-20% Improvements
- Existing Road, Substantial Modification, 21-70% Improvements
- New Road, Bladed
- Access Roads (Retired)

Structural Work Areas

- Pulling and Tensioning
- Structure Work Area

Resources

- Cultural Resource Avoidance
- Cultural Resource Monitoring
- Cultural Resource Survey Area

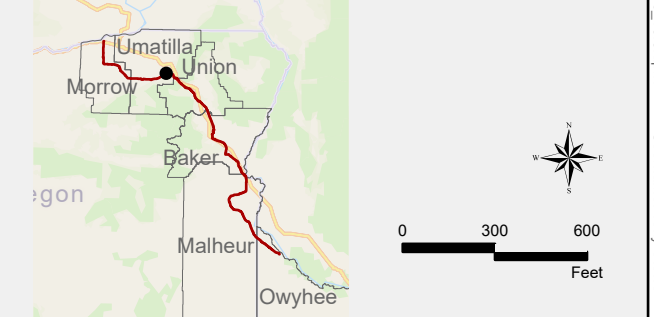


Figure 6C. Cultural Resource Map

Boardman to Hemingway 500kV Transmission Line (B2H)

Addition of 16 Access Roads and PT Site Shift Between Structures 63/1-79/4
Amendment Determination Request

NAD 1983 UTM Zone 11N 4/2/2026

Project Features IFC Rev2d, 20251013