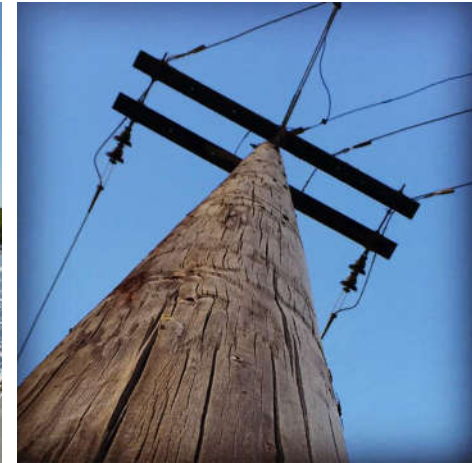


Oregon Department of ENERGY

Energy Facility Siting
Process Overview for the
Bonanza Energy Facility
Informational Meeting

Virtual Meeting –
Teleconference and
Online via WebEx

October 13, 2020
Begins at 5:30 pm



Oregon's Energy Facility Siting Program

- Primary Purpose
- Energy Facility Siting Council (EFSC)
- Oregon Department of Energy (ODOE)
- Consolidated Review
- Standards-based
- Public participation
- Application Submittal



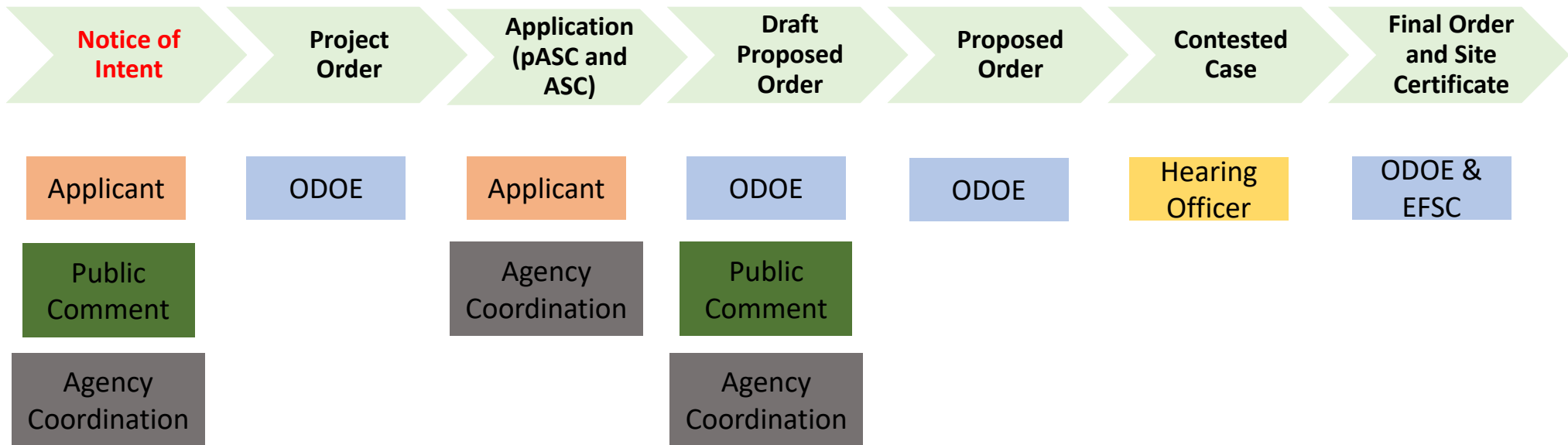
Energy Facility Siting Process

EFSC Standards:

- General Standard of Review
- Organizational Expertise
- Structural Standard
- Soil Protection
- Land Use
- Protected Areas
- Retirement and Financial Assurance
- Fish and Wildlife Habitat
- Threatened and Endangered Species
- Scenic Resources
- Historic, Cultural and Archaeological Resources
- Recreation
- Public Services
- Waste Minimization
- Plus specific standards depending on facility type

Energy Facility Siting Process

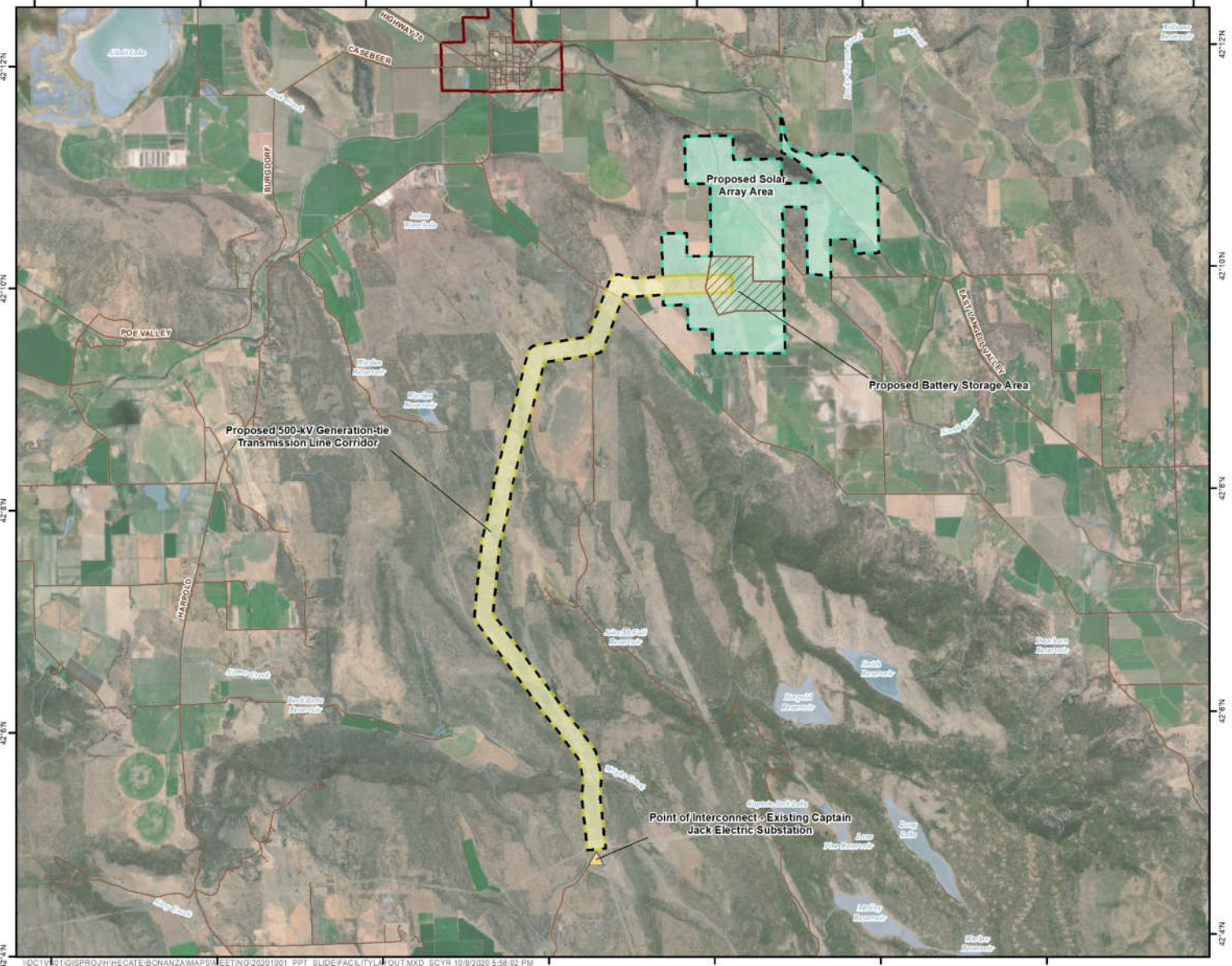
Application for Site Certificate process



Energy Facility Siting Process

Bonanza Energy Facility

- Applicant: Hecate Energy Bonanza LLC (a wholly owned subsidiary of Hecate Energy NAF LLC)
- Proposed Facility: Solar PV generating between 150 MW and 300 MW and related or supporting facilities
- Site Boundary: Located on up to 2,733 acres in Klamath County, approximately 1 mile southeast of Bonanza and 26 miles east of Klamath Falls



Permitting Thresholds for Solar PV Facilities

Large Solar PV Facilities are under EFSC's Jurisdiction

A solar photovoltaic power generation facility using more than:

- i. 160 acres located on high-value farmland;
- ii. 1,280 acres located on land that is predominantly cultivated or predominantly composed of soils in NRSC capability classes I to IV;
or
- iii. 1,920 acres located on any other land

Land Use

EFSC will make the land use determination

- Applicant seeks a Council land use determination under ORS 469.504(1)(b)
- Klamath County Board of Commissioners is Special Advisory Group
- Facility will be evaluated against:
 - local applicable substantive criteria determined by the Special Advisory Group
 - directly applicable state statutes and administrative rules
- Facility will require an exception to Statewide Planning Goal 3

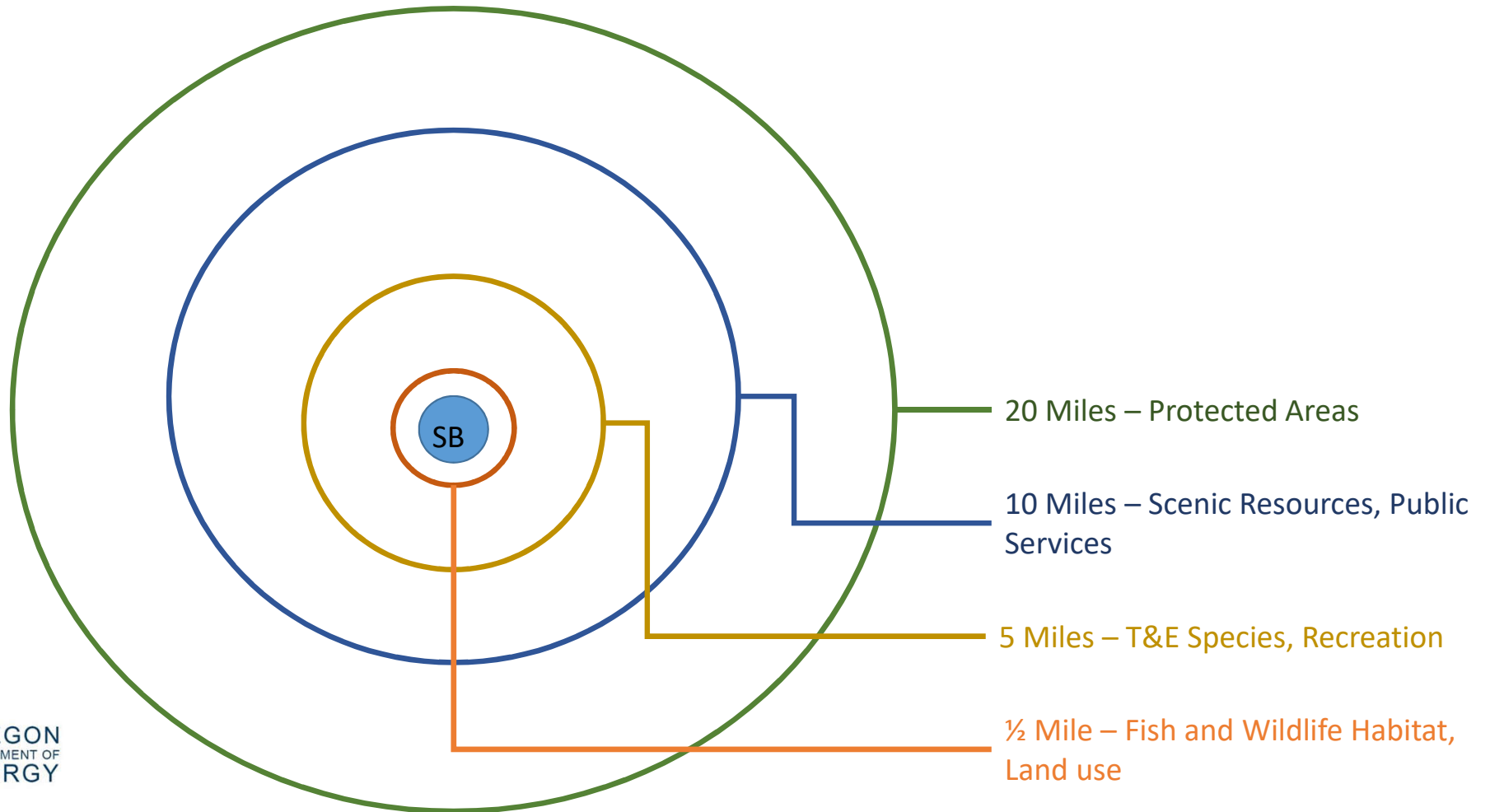
Energy Facility Siting Process

Agency Review Request and Notice of Intent (NOI) Phase

- **Reviewing Agencies and Special Advisory Groups:**
 - Provide comments on the proposed facility within the jurisdiction or expertise of the agency
 - Recommendations regarding the size and location of analysis area(s)
 - A list of studies that should be conducted to identify potential impacts
 - A list of statutes, administrative rules, applicable substantive criteria, and local government ordinances administered by the agency
 - A list of any permits administered by the agency that might apply to construction or operation of the proposed facility



Study Area



EFSC Facilities Webmap

Facilities Under EFSC

- ENERGY FACILITY SITING COUNCIL
- ENERGY FACILITIES
 - ▶ FACILITIES UNDER EFSC
 - EFSC FACILITIES MAP
 - FEDERAL FACILITIES IN OREGON
- FACILITIES UNDER REVIEW
- FACILITY SITING IN OREGON

Before a large energy facility is built in Oregon, a developer must [apply for a site certificate](#) from the Energy Facility Siting Council. The types of energy facilities subject to council jurisdiction are defined in [Oregon Revised Statute 469.300](#) and explained on this page: [Types of Facilities Under Council Jurisdiction](#).

Some types of energy facilities that would otherwise need a site certificate are exempt from council jurisdiction.

If a developer receives a site certificate from EFSC, it can begin constructing and operating the facility. Occasionally a developer with a site certificate will apply for an amendment to the site certificate. That amendment process, like the site certificate process, must go through EFSC for approval.

Listed below are projects/facilities that are either approved for construction, under review for a site certificate or amendment, exempt, or terminated. You may also view a map of all EFSC-jurisdiction facilities [in Oregon](#).

RESOURCE

- [Siting Process](#)
- [Siting Rules & Statutes](#)
- [Siting Standards](#)

Oregon Energy Facilities



Contact the Facility Siting Team:

- 503-378-4040
- 800-221-8035
- energy.siting@oregon.gov

Sign up to receive EFSC announcements or project updates by email.

Facilities

Sort by Facility, Facility Type or Status by clicking on the column labels
Click on the info icon to see more information

Info	Facility	Description	Status	Capacity	County(s)
	Blue Marmot Solar Energy Facility	Solar	Proposed	80 MW	Lake
	Boardman Solar Energy Facility	Solar	Proposed	75 MW	Morrow, Gilliam
	Boardman to Hemingway Transmission Line	Transmission Line	Proposed	300-mile, 500 kV	Morrow, Umatilla, Union, Baker, Malheur, Owyhee (Idaho)
	Nolin Hills Wind Power Project	Wind	Proposed	350 MW	Umatilla
	Obisidian Solar Center	Solar	Proposed	800 MW	Lake



<http://geo.maps.arcgis.com/apps/MapSeries/index.html?appid=64e4d4f78c0c42e99d05e46754122ad3>

EFSC Bonanza Project Page

The screenshot shows a web browser window with the URL <https://www.oregon.gov/energy/facilities-safety/facilities/Pages/BEF.aspx>. The page title is "Bonanza Energy Facility".

ENERGY FACILITY SITING COUNCIL
ENERGY FACILITIES
FACILITIES UNDER REVIEW

- ARCHWAY SOLAR ENERGY FACILITY
- BLUE MARMOT SOLAR ENERGY FACILITY
- BOARDMAN TO HEMINGWAY TRANSMISSION LINE
- BONANZA ENERGY FACILITY**
- CARTY GENERATING STATION
- EUGENE TO MEDFORD TRANSMISSION LINE
- MADRAS SOLAR ENERGY FACILITY
- MONTAGUE WIND POWER FACILITY
- NOLIN HILLS WIND POWER PROJECT
- OBSIDIAN SOLAR CENTER
- SUMMIT RIDGE WIND FARM
- WHEATRIDGE RENEWABLE ENERGY FACILITY I
- WHEATRIDGE RENEWABLE ENERGY FACILITY II

ENERGY FACILITY SITING IN OREGON

Site Description: The Bonanza Energy Facility is a proposed solar photovoltaic energy generation facility with a generating capacity ranging between 150 megawatts (MW) and 300 MW (depending on the solar module technology selected at final design). Related or supporting facilities include collector lines, power conversion stations (inverters and transformers), an onsite facility substation, 500-kV generation-tie transmission line, point of interconnection, operations and maintenance building, service roads and gated access points, access roads, and construction areas, as well as an up to 1,100 MW battery storage system. The facility would be located on approximately 2,733 acres.

Status:
Proposed. The Department received a Notice of Intent to apply for a Site Certificate on August 7, 2020. On September 29, 2020, the Department issued public notice pursuant to OAR 345-015-0110, initiating a comment period on the Notice of Intent extending from September 29 through October 29, 2020. The Department anticipates receipt of the preliminary application for site certificate in early 2021.

As detailed in the Public Notice on Notice of Intent, the Department and applicant will host a public informational meeting (online and over the phone) on October 13, 2020.

The informational meeting will be held on October 13, 2020 at 5:30 pm via WebEx. To participate, you may use one of the options below:

WebEx Link: <https://odoe.webex.com/odoe/onstage/g.php?MTID=ea1d74ea5185c111d90afdef86d73e131>

By phone:
[1-408-418-9398](tel:14084189398)

Access Code: 173 675 5135

This web page will be updated with information from the meeting (including a PDF of the PowerPoint slides).

Location:
Klamath County, near Bonanza. [PDF Map](#) | [Online Map](#)

EXHIBIT FILES REFERENCE

- Exhibit A: Applicant Information
- Exhibit B: Project Description
- Exhibit C: Property Location and Maps
- Exhibit D: Organizational Information
- Exhibit E: Permits Required
- Exhibit F: Property Ownership
- Exhibit G: Materials Analysis
- Exhibit H: Geology and Soil Stability
- Exhibit I: Soils
- Exhibit J: Wetlands
- Exhibit K: Land Use
- Exhibit L: Protected Areas
- Exhibit M: Financial Analysis
- Exhibit N: Non-generating Facility Information
- Exhibit O: Water Requirements
- Exhibit P: Fish Wildlife Habitat
- Exhibit Q: Threatened and Endangered Plants and Animals
- Exhibit R: Scenic Aesthetic Values
- Exhibit S: Cultural Resources
- Exhibit T: Recreational Facilities
- Exhibit U: Public Services
- Exhibit V: Waste Minimization
- Exhibit W: Site Restoration
- Exhibit X: Noise
- Exhibit Y: Carbon Dioxide Emissions
- Exhibit Z: Cooling Towers

[About the Site Certificate Process](#)
[Site Certificate Process Flowchart](#)
[Expedited Review Process Flowchart](#)



Helpful Links

Webpages to help understand the State Energy Siting process

- **Public Guide**
- **Siting Project Updates**
- **About the Siting Process**
- **Siting Standards**
- **Siting Statutes & Rules**
- **Fact Sheets**

<https://www.oregon.gov/energy/facilities-safety/facilities/Pages/default.aspx>

Email Notices

Click Dimensions Email System

- **Bonanza Energy Facility**
- **All projects**
- **Council meetings**
- **Rulemakings**
- **Any combination of the above**

<http://web.energy.oregon.gov/cn/a6n53/subscribe>

Energy Facility Siting Process

Public Comment Period and Notice of Intent (NOI) Phase

- **Public Comment Period:**

- Opportunity for the public to comment on the proposed facility. All written comments submitted to ODOE are on-the-record and provided to the applicant.
- Comment period closes on Thursday, October 29, 2020.



Energy Facility Siting Process

Katie Clifford, Senior Siting Analyst

Oregon Department of Energy

550 Capitol St. NE

Salem, OR 97301

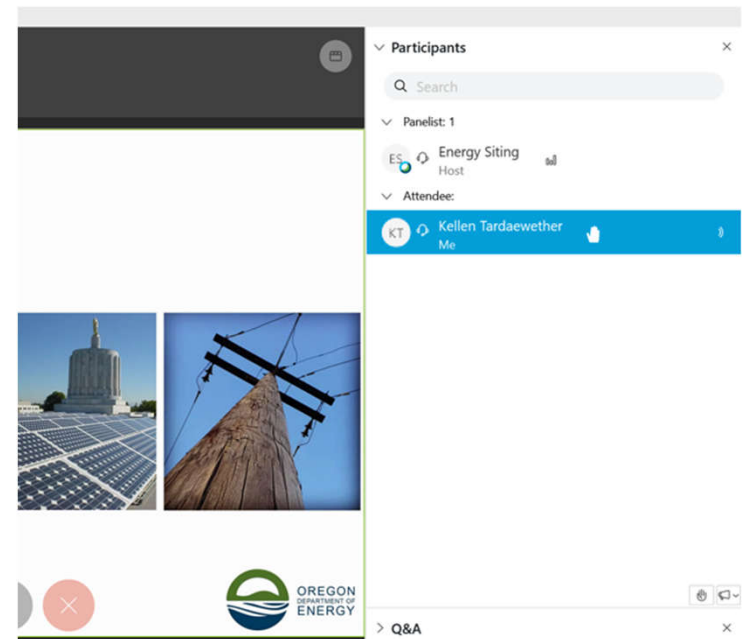
503-302-0267

Katie.Clifford@Oregon.gov



Q&A and Comments

- On WebEx Webinar – based on those who used the hand raising feature.
- On the Phone (Last Name Beginning With):
 - A - F
 - G - L
 - M - R
 - S - Z



The Department will Establish Time Limits, if Necessary.

Thank You for Your Patience While We Work on This.

