

OREGON GOVERNOR'S DATA CENTER ADVISORY COMMITTEE

# Place, People, Power and Responsibility

*A Rural Community's Story at the Forefront of Oregon's Energy Future*

RELIABILITY

AFFORDABILITY

STEWARDSHIP

ACCOUNTABILITY

*Humaira Falkenberg, Chief Energy Resource Officer  
May 29, 2026*



## I — PLACE

# Acknowledgment of Place

The Columbia River Gorge—The Dalles, A Place of Extraordinary Consequence

---

*Infrastructure decisions are never purely technical. They reshape communities, ecosystems, economies, and identity across generations.*



A place of deep Indigenous heritage, a trading hub, renewable energy like hydro, wind and solar, and modern infrastructure transitions



# Rural. Resilient. Innovative. Deeply Rooted in Place.

### S Post-Dam Era 1957–1980s

Aluminum plants arrive 1958 - 1984— 500-600 jobs, family wages, economic anchor built on cheap hydropower. The Dalles thrives on industrial energy. 350 acres—Harvey Aluminum –Martin Marietta Corp. EPA added superfund site 1987.

1986—passage of the Columbia Gorge National Scenic Area Act

Sources: [Austin Schulz, Capitalism in the American West: The Dalles, OR Surviving the Boom and Bust Cycle](#)

### Industrial Loss 1990s–2000s

Aluminum industry collapses. The Dalles absorbs the loss quietly, stubbornly, without much help from the outside world.

Sources: [Western Mining History USA EPA Superfund Site Profile](#)

### Reinvention 2000s–2010s

Community identity in landscape — orchards, gorge tourism, wind energy. Rural resilience, not dependence.

Google arrives. Largest private investment in regional history. First Data Center in Oregon.

Source: “Destination: The Dalles. This Former One-Industry Town Where Eastern Oregon Bumps Up Against The Rainy West Finds That Business Goes On After Aluminum.” The Oregonian, August 5, 2001—Archive Discovery Center

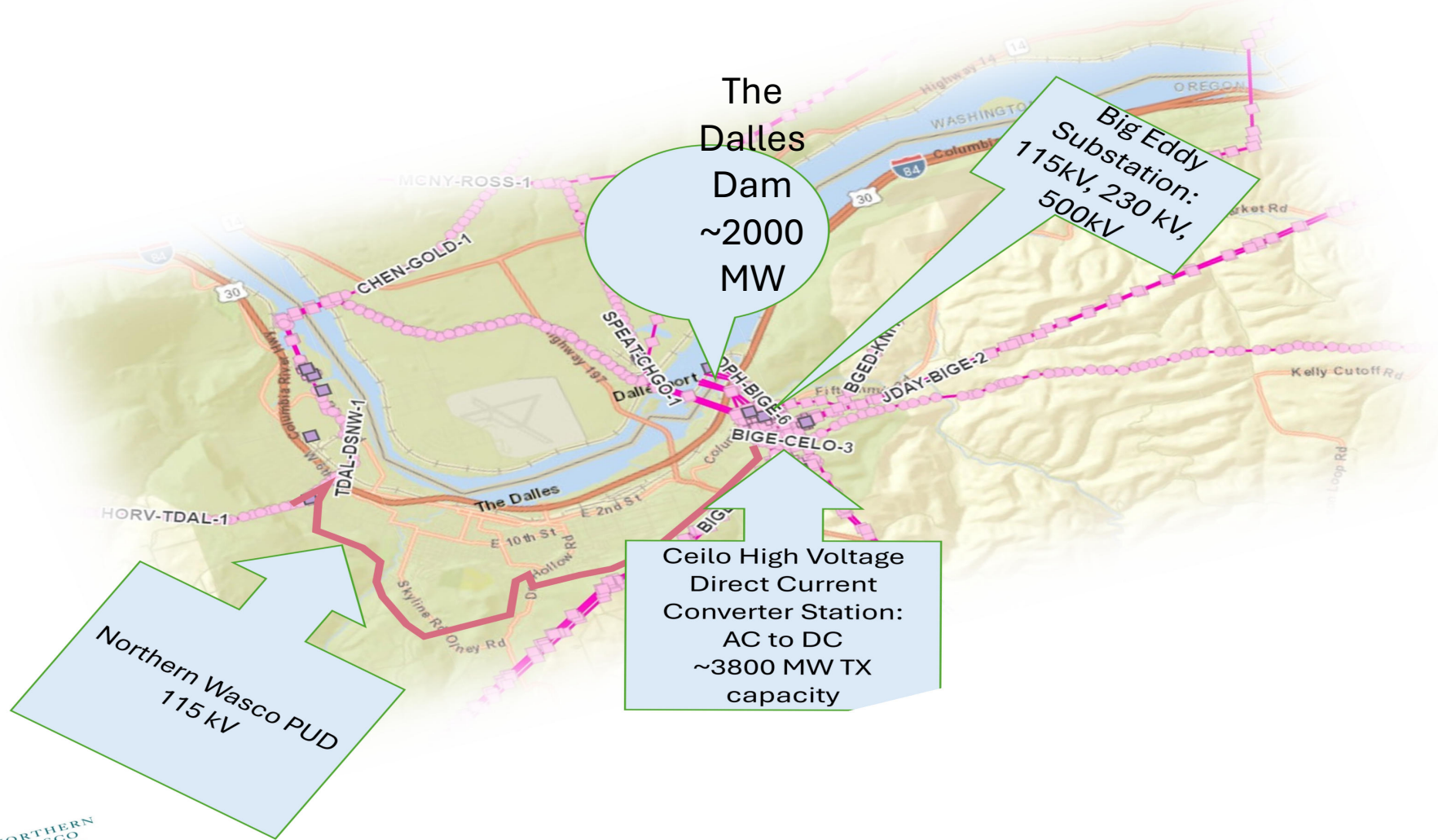
### Digital Era 2010s–Now

New chapter — but written on the community's terms.

Source: [Faster than they can Google it, newcomers find The Dalles. 2006, The Oregonian.](#)

*“My community does not wait for someone else to decide its future.”*

# Location Matters--The Dalles: Robust Power, Transmission, & Fiber Optic Nexus (Noanet & UPRR)

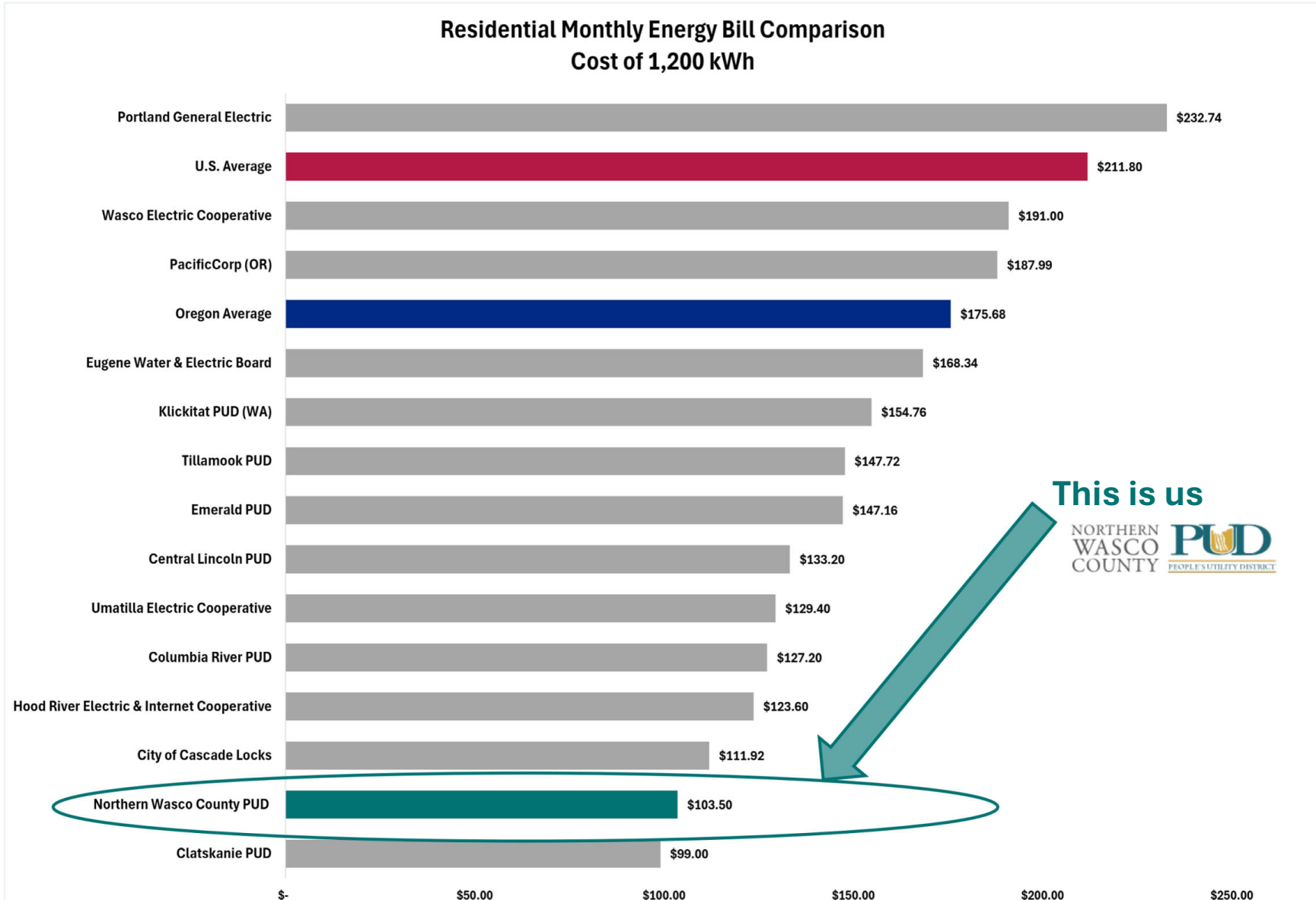


# Northern Wasco County People's Utility District

- ORS Chapter 261-Monopoly with specific geographic service territory
- Exclusive Franchise
- Locally governed with an elected Board of Directors



# Affordability is an Element of Energy Justice



This is us



Source: All utility rates from published utility tariffs, May 2026. U.S. and Oregon averages from U.S. Energy Information Administration (EIA) and reflect per-kWh costs only; they do not include basic or facilities charges.

## RESPONSIBILITY

# Local Control & Community Owned

---

*When a large load wants to locate in our service territory, we have an obligation to serve but NOT at any cost to the utility.*

Step 1: Facility Site Evaluation Request  
application-voltages >480 V & expected peak  
loads >1MW

Step 2: Pay Fee & Abide by Districts Terms and  
Conditions for Service \*

Step 3: Feasibility Analysis & Coordination with  
BPA

Step 4: Conceptual Plan of Service

Step 5: Task Authorization(s)

Step 6: Loads >5 MW Electric Service Agreement &  
Service Deposit Agreement

*"Data centers are not inherently good or bad. They are a choice.  
Choices about place, people, and power are — ultimately — choices about responsibility.  
In The Dalles, that responsibility belongs to the people who live here."*

# Electric Service Agreement

## Key terms and Structures



### Calculation of the Power Charge

The District uses a Formula Rate that is effectively a monthly Cost-of-Service-based Rate that reflects all out-of-pocket costs and a contribution to financial reserves.



### Metering

The District uses interchange class, revenue quality meters on the transmission circuits that serve the customer. We meter 115 kV and 230 kV circuits.



Wholesale Power Contracts: all power purchase agreements are fully disclosed to the customer in each monthly bill – full transparency

# Power Supply



Matching contract lengths and quantities to load certainty

And considering Potential Future Exposure to forward prices



Term contracts: 1 month to multi-year  
Credit Support Annex with counterparties,  
Service Deposits, Performance Assurance

Firm Around-the-Clock obligations with flat hourly profile  
Periodic balancing transactions



Buy from Sellers who transact throughout the Western Interconnection

Sellers must provide e-Tags as proof of delivery  
Failure to tag is a Seller default with Liquidated Damages

# Rate Structure and Myths

Common myth: “Residential Customers are subsidizing the Data Center load”

Fact: Northern Wasco County PUD--No Cross Subsidization

We carefully manage several key risks to protect NWCPUD’s existing customer-owners:

- Stranded asset risk: Infrastructure built for projects that fail or scale down could leave costs with existing customers.
- Financial concentration risk: When one customer represents a disproportionate share of utility revenue, it creates financial vulnerability for the utility. We have separate customer classes.

And FSER process does not guarantee service under existing rate schedules

JAMES C. BONBRIGHT

PRINCIPLES OF PUBLIC  
UTILITY RATES



COLUMBIA UNIVERSITY PRESS / NEW YORK



# Infrastructure Built (and Still Needed)



Under our Facility Site Evaluation Request (FSER) process and Line Extension cost recovery principles, the District and BPA have constructed 115 kV and 230 kV transmission lines, substations and switchyards to provide service to the centers.



The District's Power Resources Division and Engineering staff hold regular meetings to discuss current operations and system planning with data center representatives.



We expect that joint power resource and infrastructure planning will continue for many years into the future.



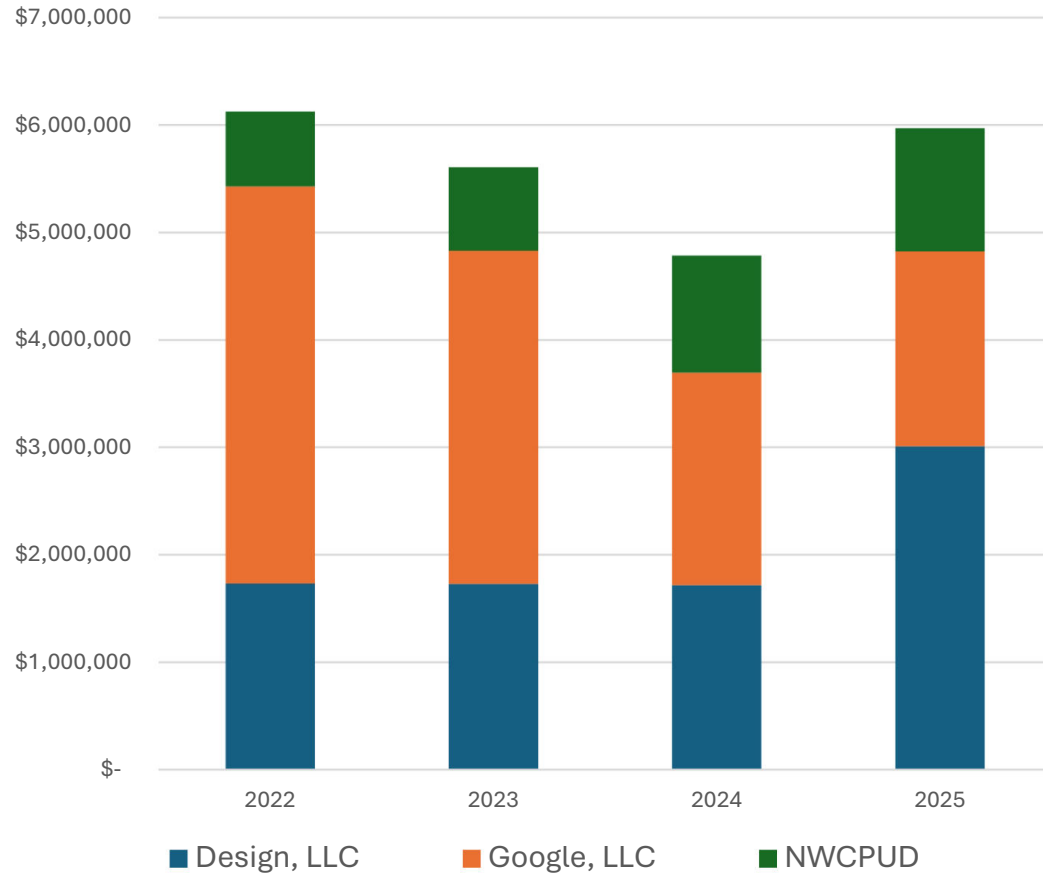
# WASCO COUNTY

## Top Taxpayers for Tax Year 2025

Ranked by Assessed Taxes; Value Type(s): 'AVR'

Rank			Account Taxes Billed	Account Assessed Value
1	<b>Party Number:</b> 130136	<b>Name:</b> DESIGN LLC		
		<b>Total(s):</b>	\$3,009,750.40	\$2,300,544,270
2	<b>Party Number:</b> 155421	<b>Name:</b> GOOGLE LLC		
		<b>Total(s):</b>	\$1,813,378.61	\$1,119,239,550
3	<b>Party Number:</b> 113969	<b>Name:</b> NORTHERN WASCO COUNTY PUD		
		<b>Total(s):</b>	\$1,148,736.36	\$80,365,807
4	<b>Party Number:</b> 102608	<b>Name:</b> UNION PACIFIC RAILROAD CO		
		<b>Total(s):</b>	\$874,569.33	\$58,873,836
5	<b>Party Number:</b> 157922	<b>Name:</b> HYDRO EXTRUSION USA LLC		
		<b>Total(s):</b>	\$594,459.09	\$38,207,260
6	<b>Party Number:</b> 130711	<b>Name:</b> BNSF RAILWAY CO		

# Data Centers and NWCPUD: Top 3 Wasco County Taxes Collected



	Design, LLC	Google, LLC	NWCPUD*
2022 \$	1,733,252	\$ 3,696,581	\$ 695,689
2023 \$	1,729,539	\$ 3,100,433	\$ 778,328
2024 \$	1,716,154	\$ 1,980,648	\$ 1,087,622
2025 \$	3,009,750	\$ 1,813,378	\$ 1,148,736
<b>Total \$</b>	<b>8,188,695</b>	<b>\$ 10,591,040</b>	<b>\$ 3,710,375</b>

**\*NWCPUD pays City of The Dalles 3% on all kwh sales**

Data Source: [https://www.wascocountyor.gov/departments/assessment\\_and\\_taxation/reports.php](https://www.wascocountyor.gov/departments/assessment_and_taxation/reports.php)

# Generic Power Portfolio Management in PNW

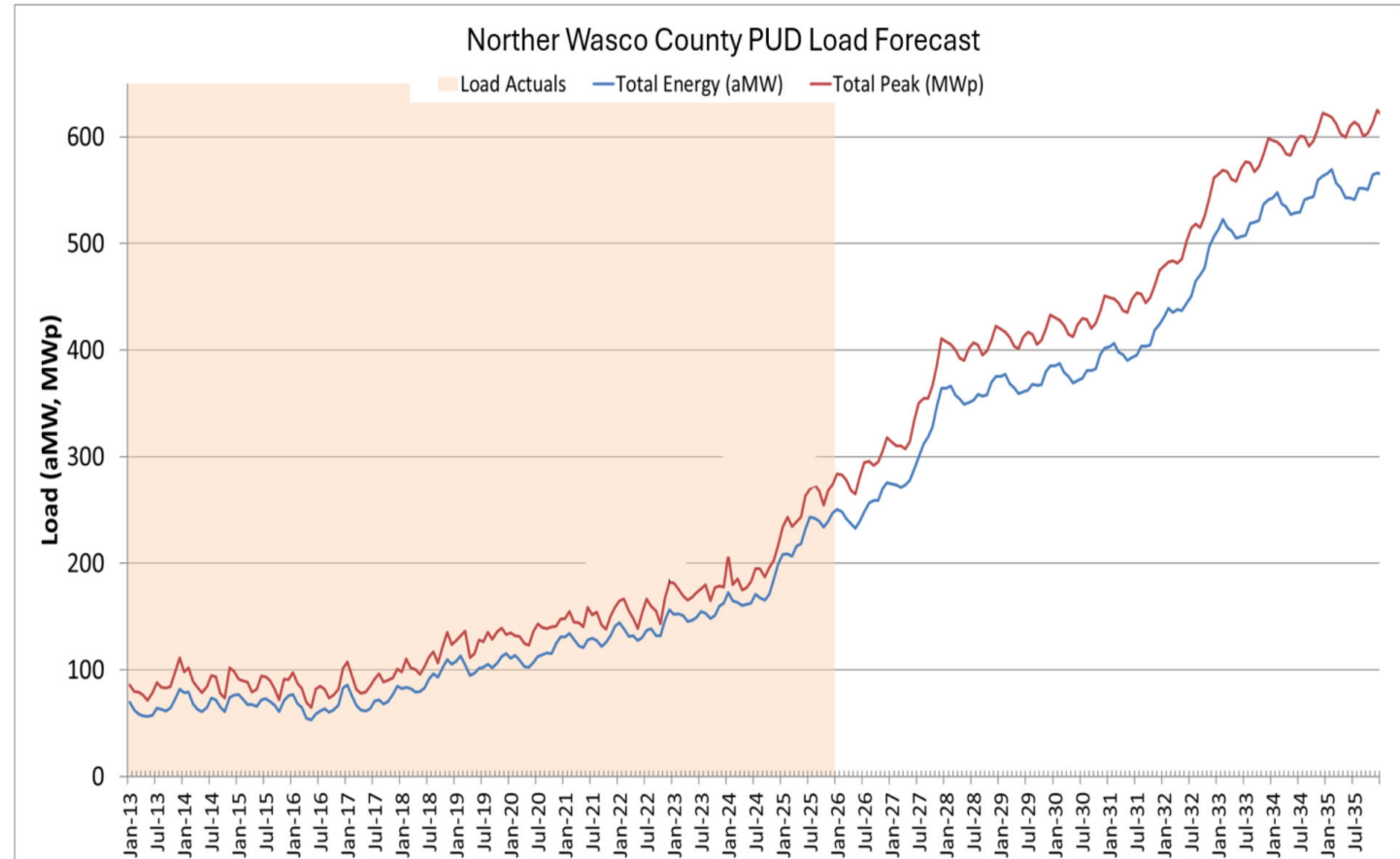
Strategic partnerships with BPA and power marketers

Wholesale Power Contracts- Failure to deliver and liquidated damages provisions

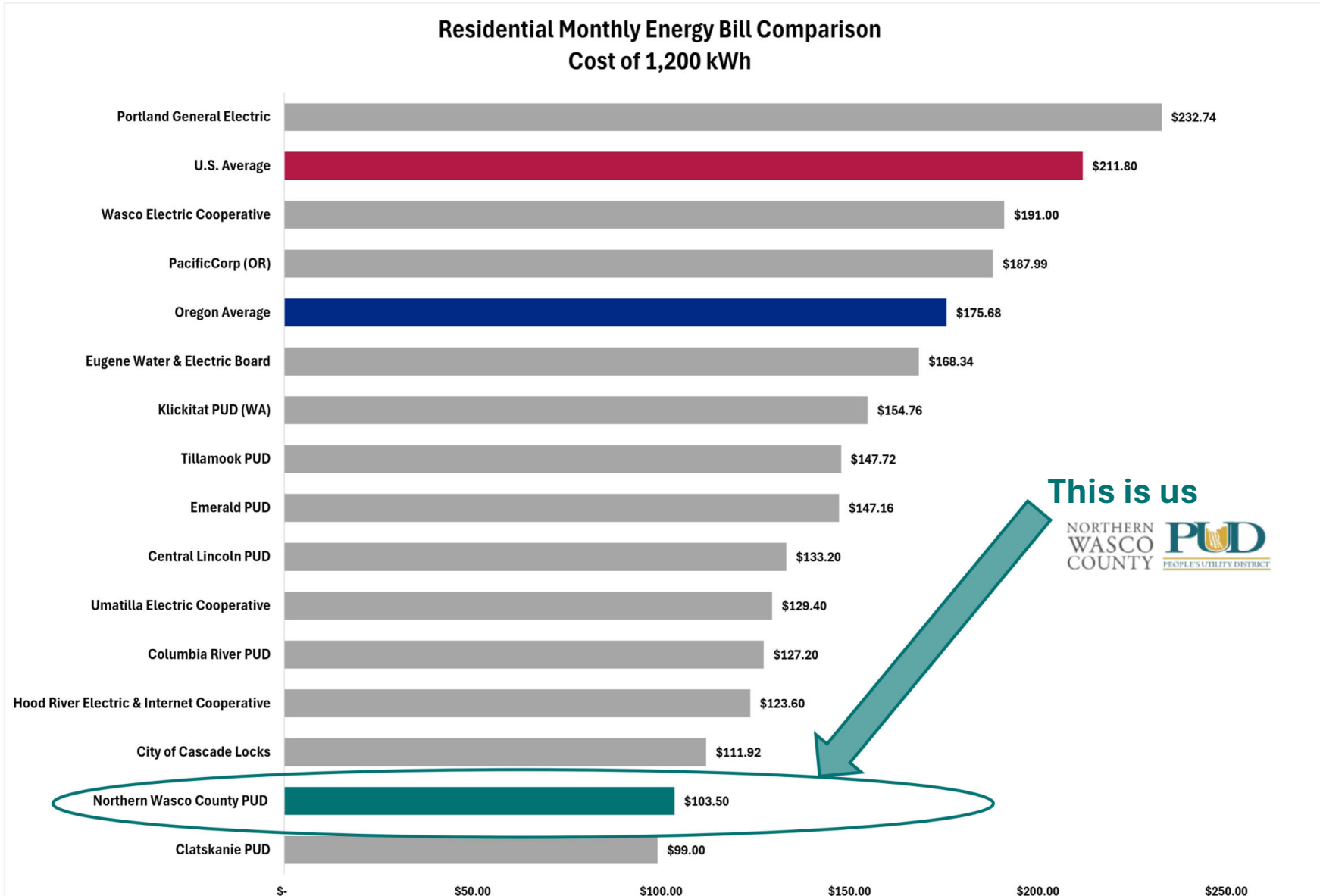
Credit Risk with Counterparties and Customer

Service Deposits, Performance Assurance & Collateral

Balanced resource planning



# Affordability is an Element of Energy Justice



This is us

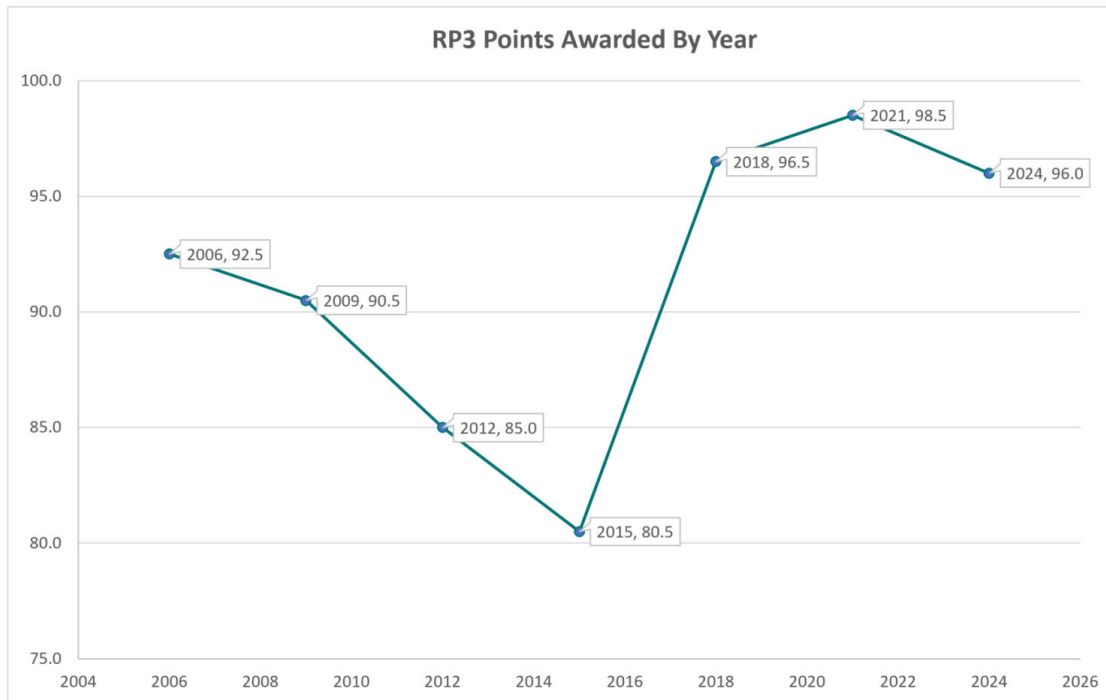


Source: All utility rates from published utility tariffs, May 2026. U.S. and Oregon averages from U.S. Energy Information Administration (EIA) and reflect per-kWh costs only; they do not include basic or facilities charges.

## RESPONSIBILITY

# Organizational Excellence

Award Year	Points Awarded	Award	Ranges
2006	92.5	Platinum	Diamond 98-100
2009	90.5	Platinum	Platinum 90-97
2012	85.0	Gold	Gold 80-89
2015	80.5	Gold	
2018	96.5	Platinum	
2021	98.5	Diamond	
2024	96.0	Platinum	



# Local Strong—Thank you!



Special thanks to NWCPUD Board of Directors, Roger Kline, General Manager, Irene Scruggs, Chief Legal Officer, Kurt Conger, Assistant General Manager, Jeff Teel, Chief Operating Officer, Lana Egbert, Chief Financial Officer, Mark Freeman Customer Solutions, Director, Cyndi Gentry, Director of Corporate Services, Karen Heim, Community Relations Program Manager, Kathy McBride, Executive Assistant, and PRD team.