

# Interactions Between Energy Infrastructure and Oregon's Land Use System

Data Center Advisory Committee  
April 24, 2026

Diane Brandt  
Policy & Legislative Affairs Director



RENEWABLE  
NORTHWEST

# Renewable Northwest

RNW is a **501(c)(3)** with a membership including renewable energy and storage developers and industry, other non-profits, industry supporting organizations

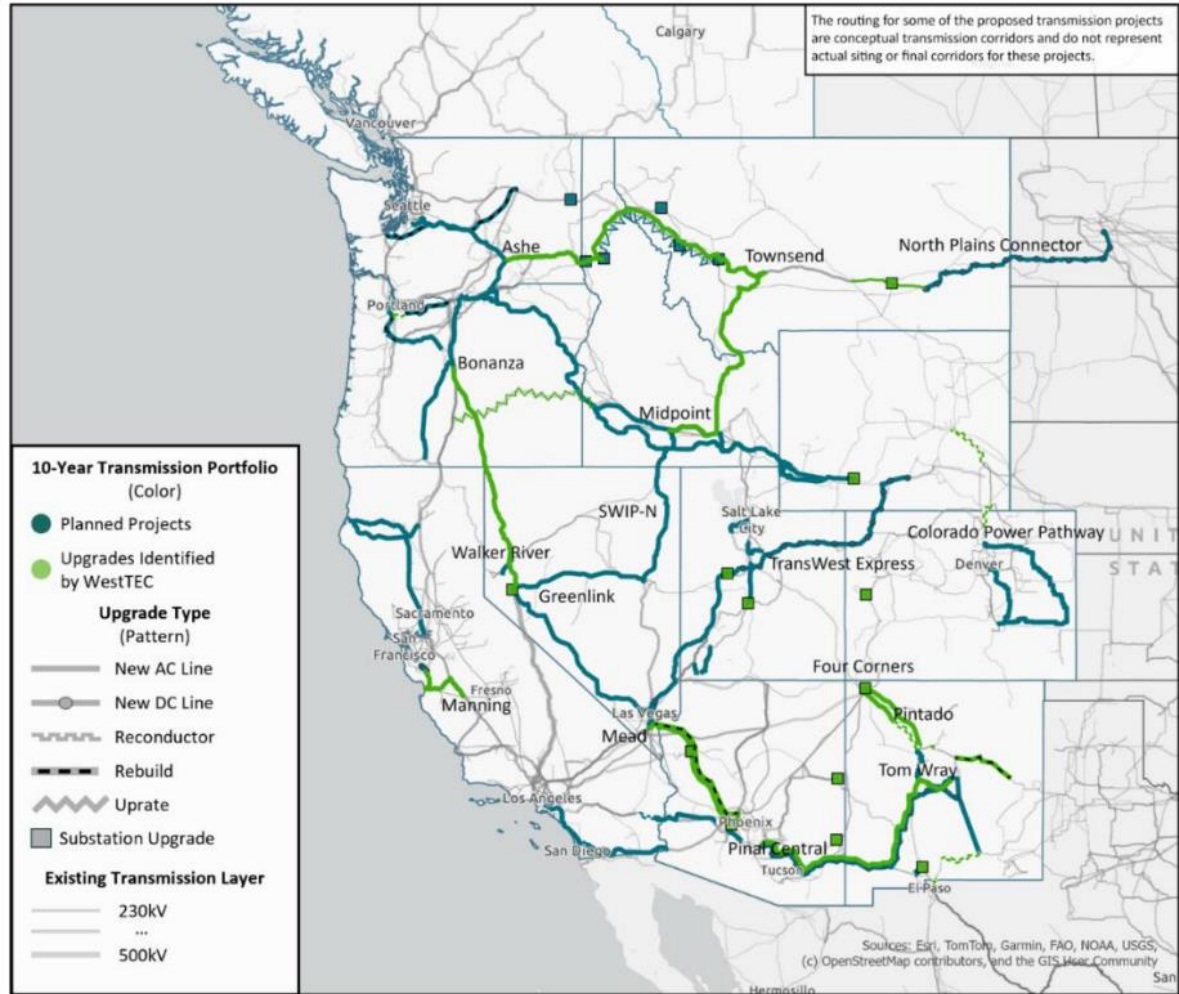
We advocate for the **expansion of renewable energy and storage resources** in the Northwest (OR, WA, MT, ID) through collaboration with **government, industry, utilities, customers, and advocacy groups.**

## RNW's Program Pillars:

- Policy
- Regulatory
- Markets
- Transmission
- Siting & Permitting



# Context: Energy Infrastructure (Transmission)



Transmission System Upgrades & Expansion Needed

=> Reliability

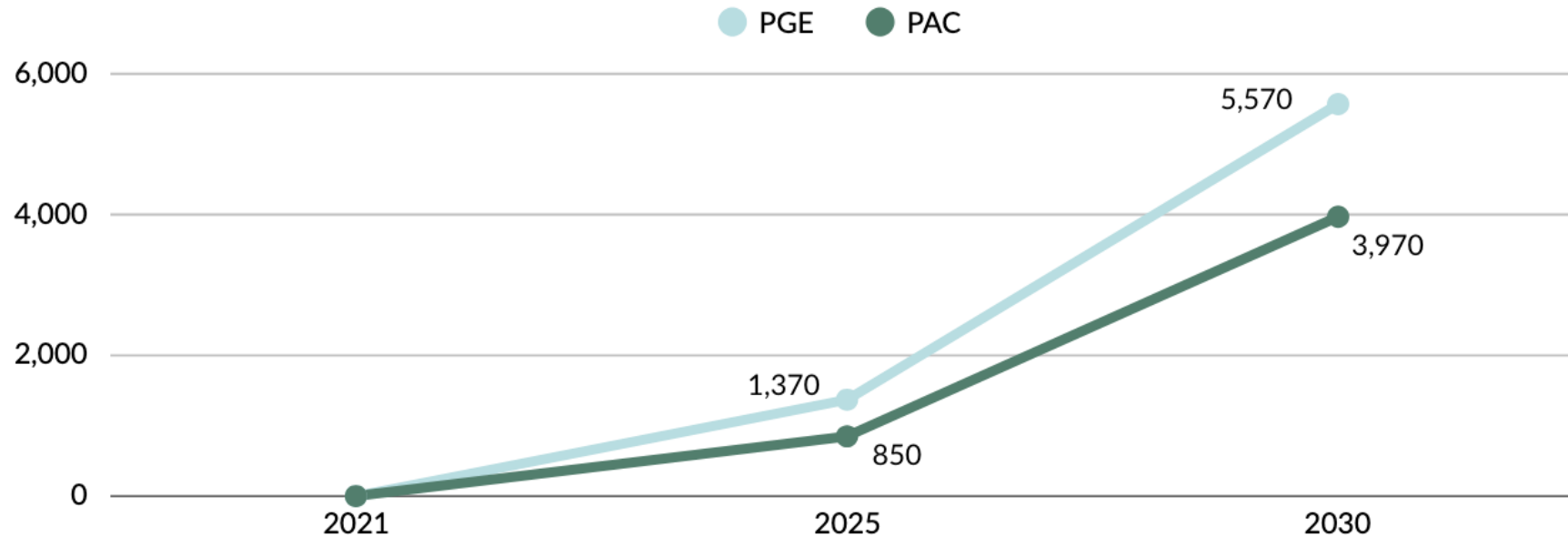
=> Increasing Demand in all Sectors

Figure Source: WestTEC, [West-Wide Transmission Study: 10-Year Horizon Report, February 2026.](#)

**FIGURE E-2. WESTTEC 10-YEAR HORIZON TRANSMISSION PORTFOLIO**

# Context: Energy Infrastructure (Generation & Storage)

Procurement Progress to Date vs Projected Need to 2030:  
Wind, Solar, and Storage Additions (Megawatts)



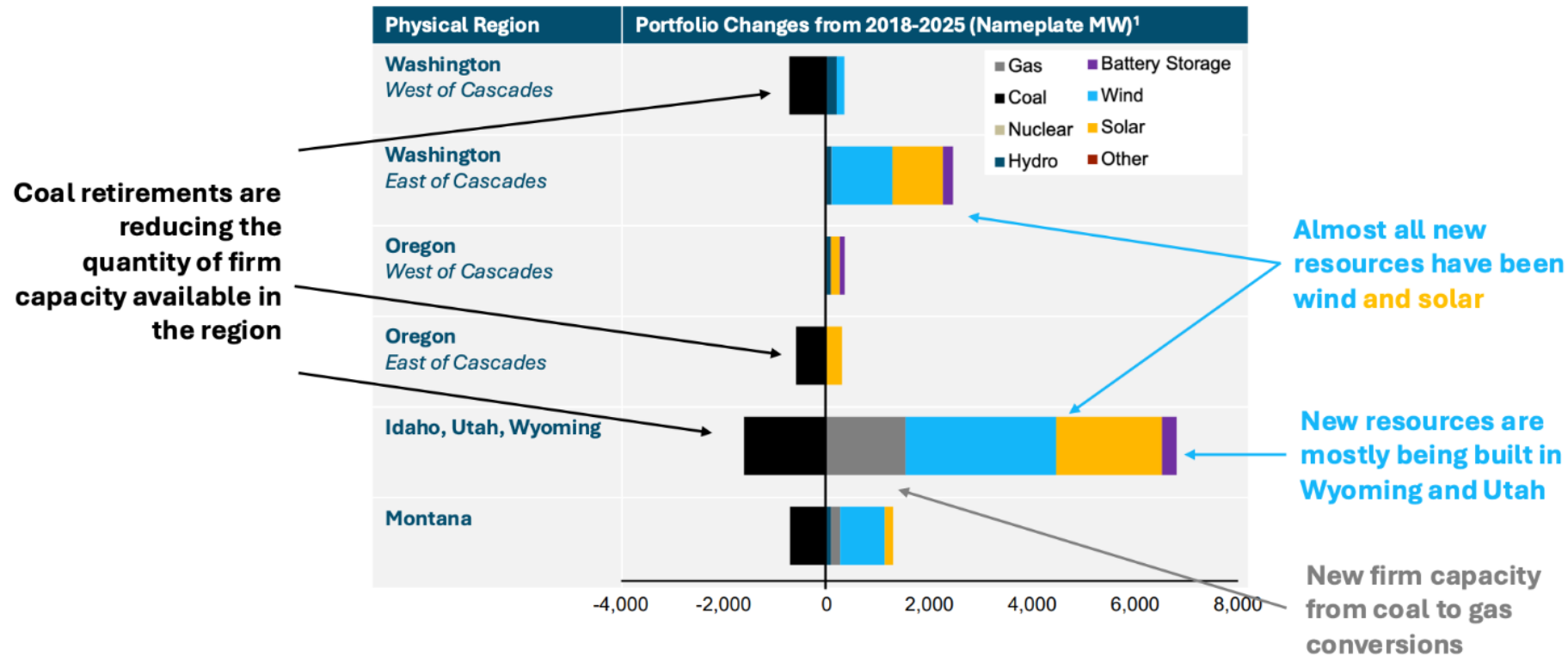
Estimates based on RNW analysis of the latest Utility Integrated Resource Plans filed at the OPUC. The PAC IRP (2024) includes no data center load growth. The PGE IRP (Updated 2023) estimates 20-year average annual load growth as: 5.2% industrial, 2.2% residential, and 1.1% commercial, inclusive of electrification.

# Land Use Interactions with Energy Infrastructure: Siting & Permitting

- Permitting - EFSC and County / Local Jurisdictions
    - => Depends on project type and size
  - Both pathways have land use element/review
    - => What this means: Determination of compatibility/compliance with land use goals
    - *Land Use Goals most often needing compliance or exception\* determination =>*
      - Goal 3 (Agricultural Lands)*
      - Goal 4 (Forest Lands)*
- \* These are lengthy, very detailed, can open up further review*
- Only Energy related Goal is Goal 13: Energy Conservation
    - *Adopted in 1974, never updated*

What we've seen on getting projects built...

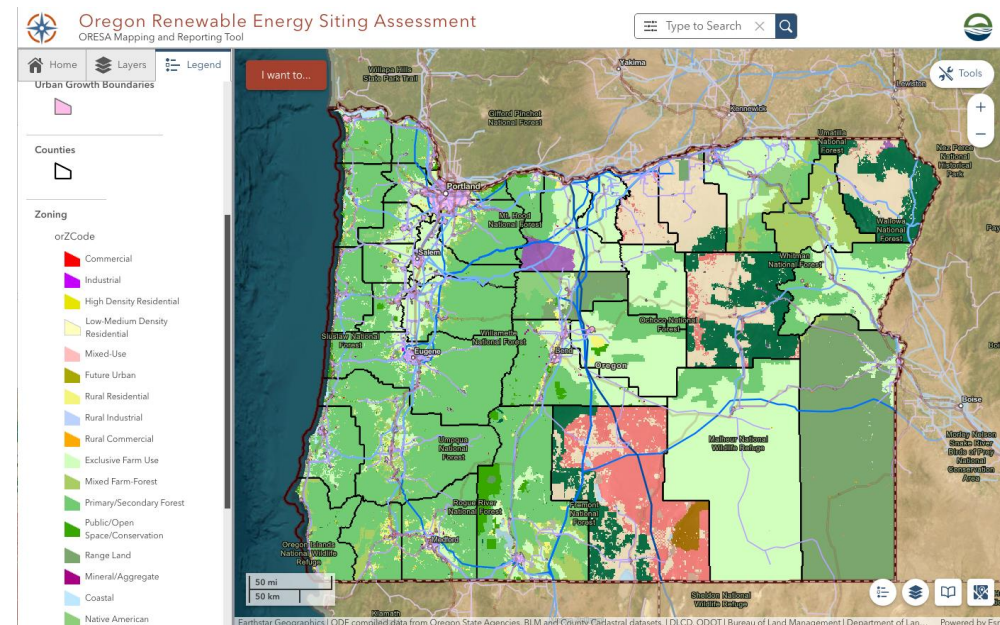
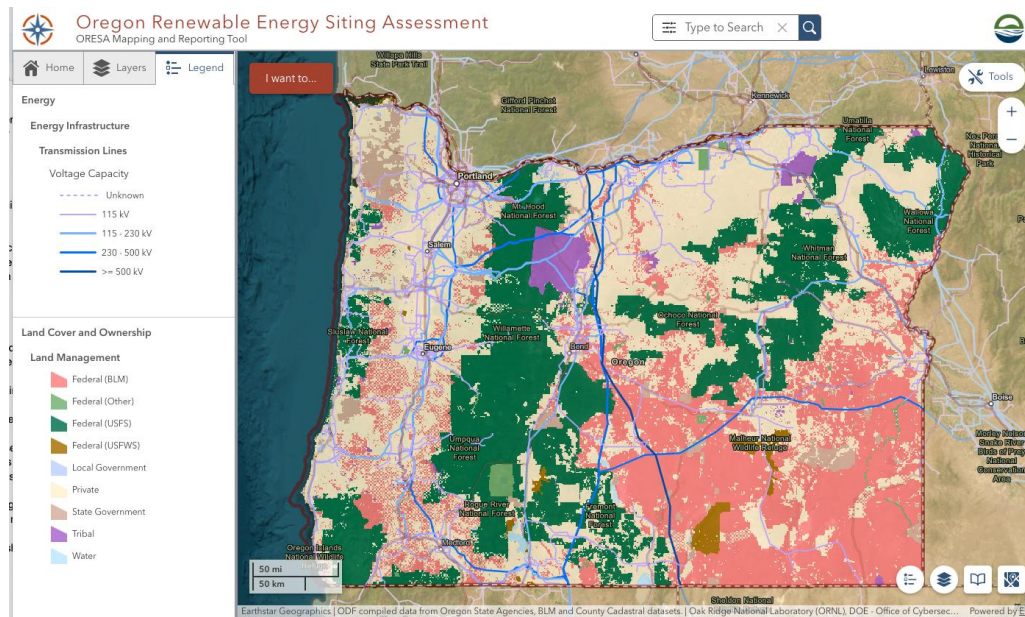
# Most new resource additions since 2018 have been solar and wind, and most have been outside of Washington and Oregon



# Inability to Site Energy Infrastructure - Land Use Overlay

Many of Oregon's lands are public. Majority of private lands are zoned as EFU.

- *Even renewable energy projects sited on federal lands would require EFSC review, as well.*



# Solutions

## What we've tried & what's been done:

- Optionality for permitting pathways
  - Expanding County permitting
  - Maintaining Optionality for EFSC or County pathways
- Siting Table of 2022-2023 =>
  - DLCDC's Eastern OR Solar Siting RAC - Identifying areas of lower conflict
- Executive Orders 25-25, 25-29

## Ways to keep making progress:

- How does the Land Use System reflect Oregon and meet the needs of Oregonians today and in the future?
  - Does it balance Oregon's resources?
- Expand on the work already done?
  - Oregon State Energy Strategy and EOs 25-25 & 25-29 work
  - Lower Conflict conversations