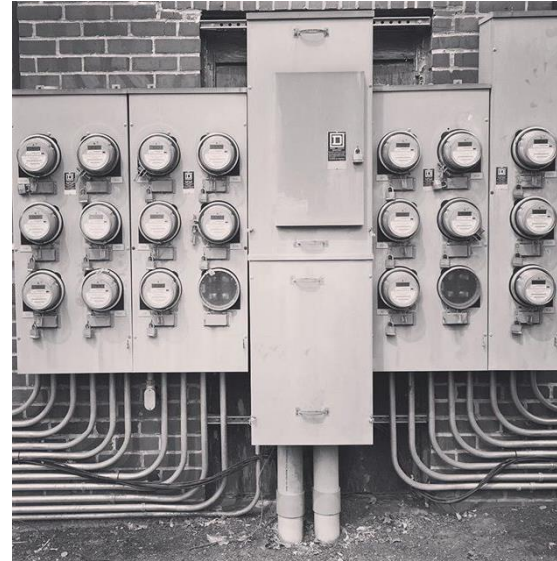


Oregon Department of **ENERGY**

County Energy Resilience Grant Program

Hannah Satein &
Maxwell Woods
June 25, 2024





OREGON DEPARTMENT OF ENERGY

Leading Oregon to a safe, equitable, clean, and sustainable energy future.

Our Mission

The Oregon Department of Energy helps Oregonians make informed decisions and maintain a resilient and affordable energy system. We advance solutions to shape an equitable clean energy transition, protect the environment and public health, and responsibly balance energy needs and impacts for current and future generations.

What We Do

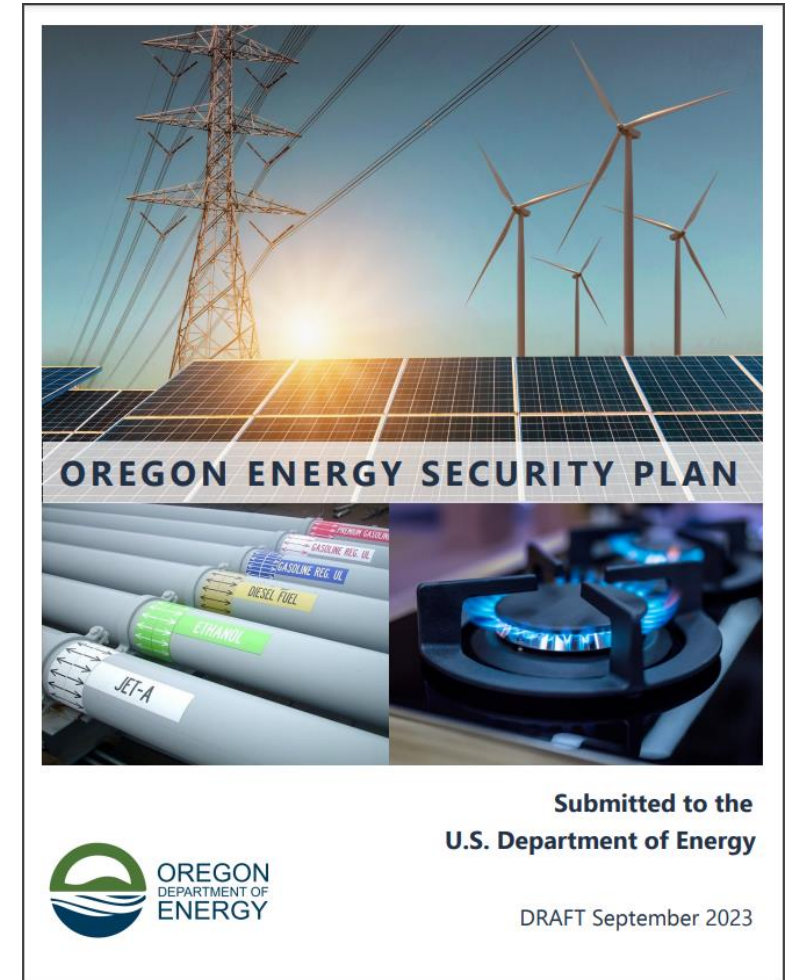
On behalf of Oregonians across the state, the Oregon Department of Energy achieves its mission by providing:

- A Central Repository of Energy Data, Information, and Analysis
- A Venue for Problem-Solving Oregon's Energy Challenges
- Energy Education and Technical Assistance
- Regulation and Oversight
- Energy Programs and Activities

SETTING THE STAGE

Energy Resilience in Oregon

- **Energy Resilience:** The ability of **energy systems**, from production through delivery to end-users, **to withstand and rapidly restore** energy delivery following **non-routine disruptions** of severe impact or duration.



SETTING THE STAGE

Community Energy Resilience

- The ability of **a specific community** to maintain the availability of energy needed to support the provision of **energy-dependent critical public services** to the community following nonroutine disruptions of severe impact or duration to the **state's broader energy systems**.

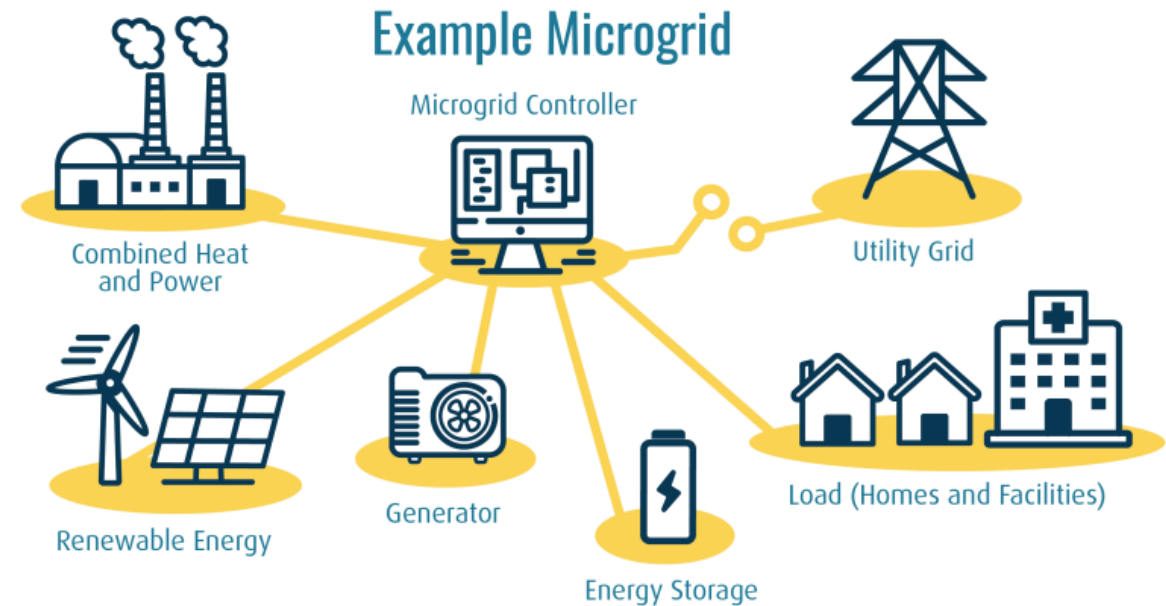


Image courtesy of NASEO

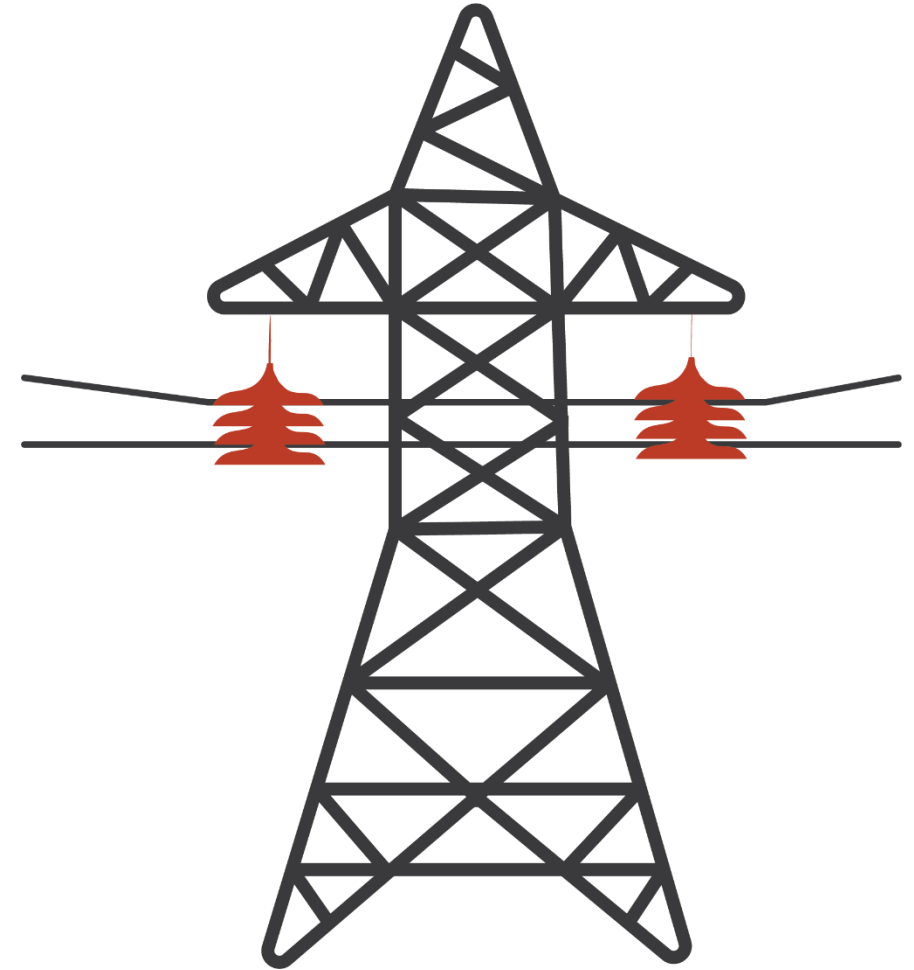
PROGRAM ESSENTIALS

- **Program:** Up to \$50,000 per Oregon County to develop energy resilience plan
- **Eligibility:**
 - Oregon County
 - No existing plan meeting requirements of HB 3630
- **Application window:** May 22, 2024-February 28, 2025
- **Program deadline:** August 1, 2025



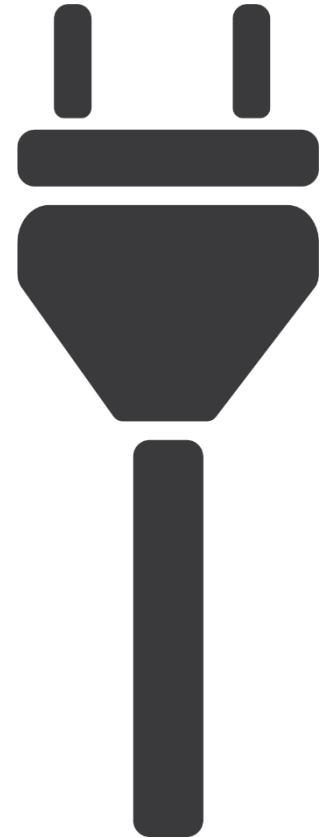
PLAN REQUIREMENTS

- Be based on and plan for **short-term, medium-term, and long-term power outages**
- Identify and map:
 - **Existing energy infrastructure** in the county including transmission lines, distribution lines, substations, and energy storage systems
 - **Natural hazard risks**
 - Communities that experience **social vulnerability**



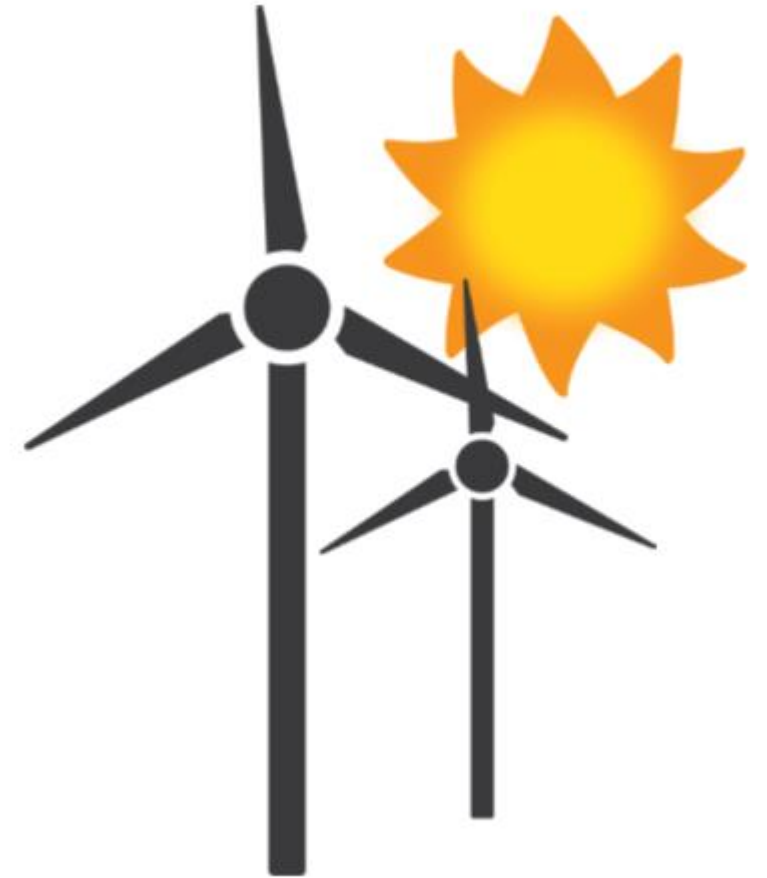
PLAN REQUIREMENTS

- Consult with representatives from **environmental justice communities** to **identify and map socially vulnerable communities**
- Identify potential locations for **community resilience centers** and **communication zones** that the public can access during a power outage
 - Must use locations of communities that experience social vulnerabilities to prioritize potential community resilience locations



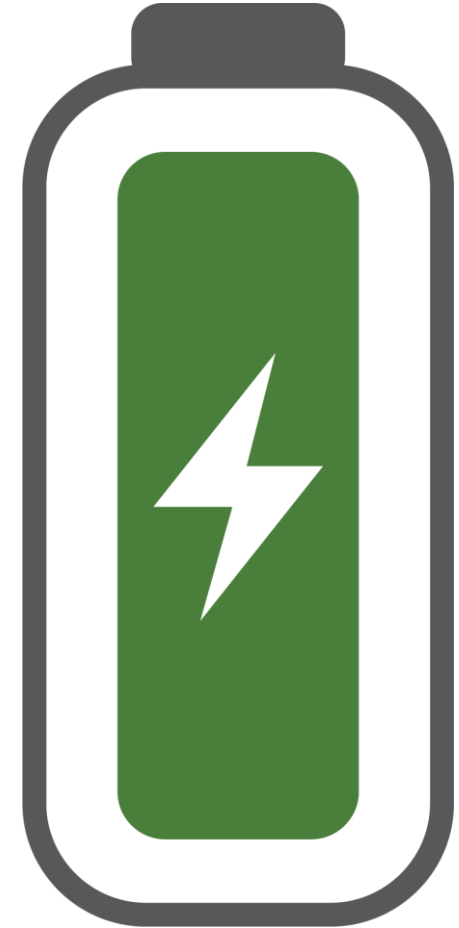
PLAN REQUIREMENTS

- Inventory the **energy consumption needs** of critical public services facilities
 - A facility related to law enforcement, fire protection, health and medical services, sanitation services, fuel and fueling, public works and engineering, public information and communications and emergency response.
- Identify critical public services facilities where the **development of alternate energy generation and storage resources** will meet local energy resilience needs



PLAN REQUIREMENTS

- Identify opportunities to coordinate and locate **energy infrastructure development to align with and support** critical public services facilities
- Identify **time schedules, priorities, and potential funding sources** for developing energy resilience
- Identify **other actions and resources needed to implement** the energy resilience plan

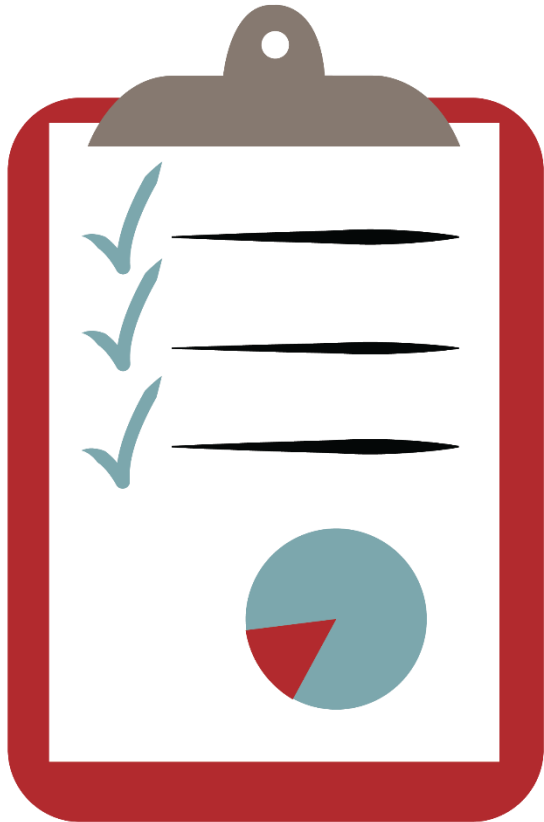


APPLICATION PROCESS

- **Access:** Available on program website
- **Review:** Completeness and eligibility
- **Submission:**
county.resilience@energy.oregon.gov



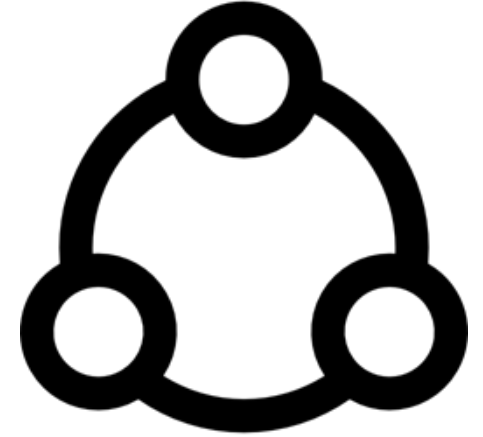
OTHER PROGRAM REQUIREMENTS



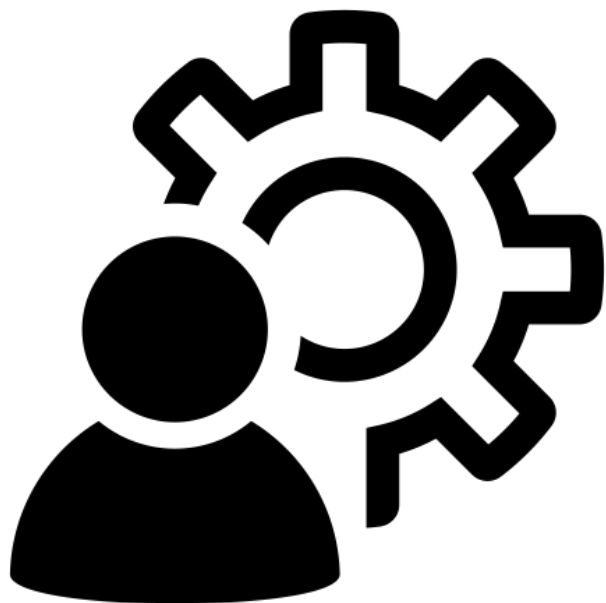
- **Funds disbursement:** One time funds disbursement following performance agreement
- **Eligible uses of funds:**
 - County staff time, hiring technical assistance provider, outreach, travel, other
- **Interim reporting:** October 2024, March 2025
- **Deliverables:** Copy of plan and program completion form due by August 1, 2025
- **Adoption and incorporation:**
 - Plan should be formally adopted by the county and be incorporated into county's natural hazard mitigation plan, per HB 3630 Section 5, 2 (a) and (b)

COHORT OPTION

- **Size:** No minimum or maximum
- **Lead county:**
 - Responsible for program processes and paperwork
 - Receives funds distribution on behalf of cohort
 - Responsible for upholding program requirements on behalf of cohort
- **Application:** Cohort-specific application
- **Content:** Plan must provide required content for each county in cohort
- **Adoption and incorporation:** All counties must adopt plan and incorporate it into their natural hazard mitigation plans



RESOURCES



- **Plan Development Resources List:**

- Technical assistance provider list, mapping, example plans, project funding and technical assistance opportunities, additional resources

- **Website:**

- Program overview, opportunity announcement, applications, FAQs, resources list, webinar recordings
- <https://www.oregon.gov/energy/safety-resiliency/Pages/County-Resilience.aspx>

- **Utilities**

- **Program coordinator**

QUESTIONS?



OREGON
DEPARTMENT OF
ENERGY

Thank you!

county.resilience@energy.oregon.gov

Phone: 971-240-3577

www.oregon.gov/energy/safety-resiliency/Pages/County-Resilience.aspx