



U.S. DEPARTMENT *of* ENERGY

Office of Environmental Management

Hanford Field Office

Hanford TRU Program – Progress Towards TRU Waste Shipments to WIPP

Presented by: Kelly Ebert, Projects and Facilities Division Director
U.S. Department of Energy, Hanford Field Office

March 17, 2026



U.S. DEPARTMENT
of **ENERGY** | Office of Environmental
Management

Hanford Field Office

Current TRU Waste Inventory

- Approximately 11,000 TRU containers in above ground storage
 - Approximately 6,300 containers are certifiable
- Approximately 13,000 containers of stored TRU waste to be retrieved



November 2010

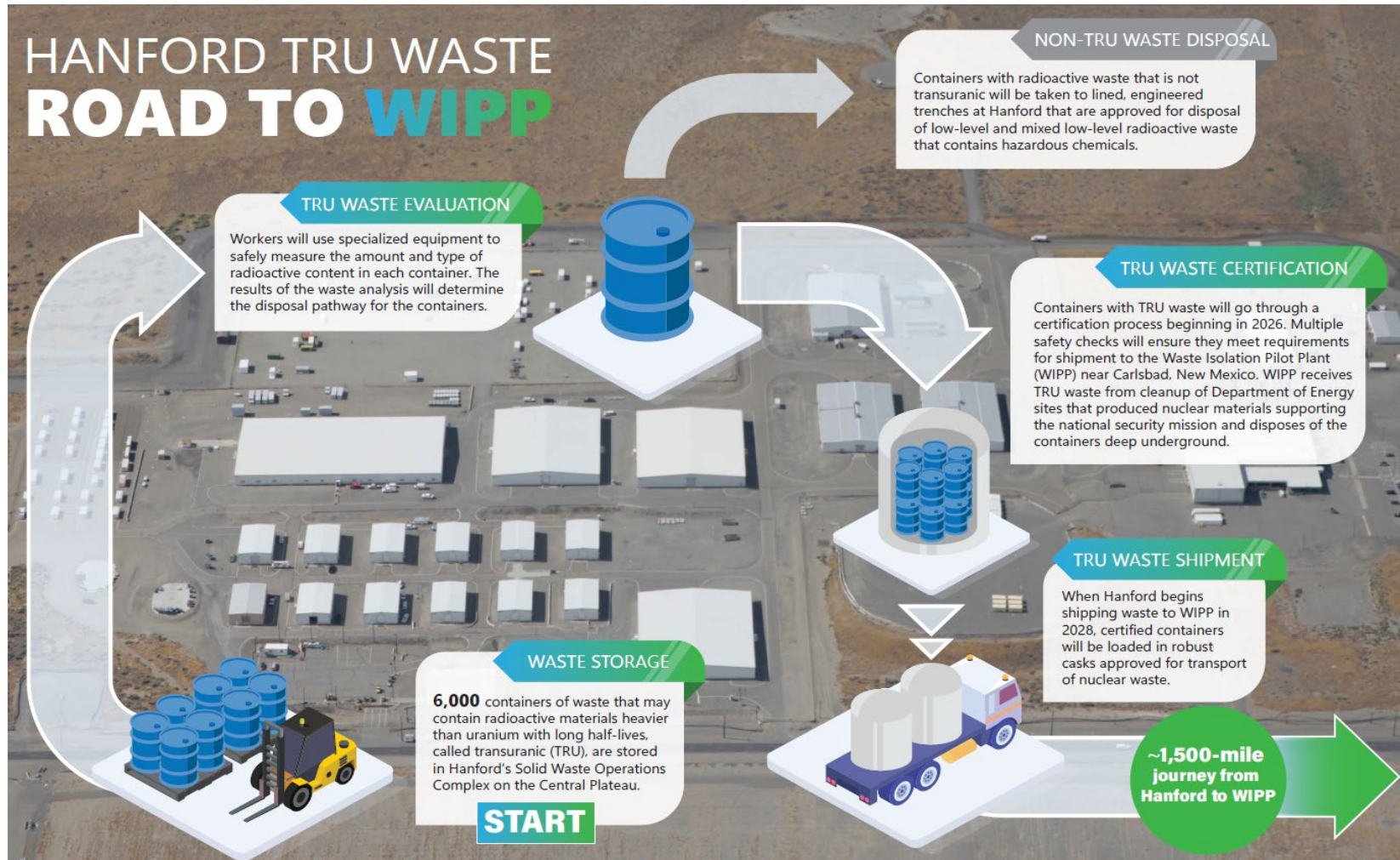
Retrievable TRU Waste at Burial Grounds



December 2025

Above Ground TRU Waste

TRU Certification Overview



Establishing WIPP-Certified Program

- Current TRU Certification Activities:
 - Central Characterization Program (CCP) equipment, personnel and procedures established onsite
 - Supporting CCP's development of required Acceptable Knowledge (AK) documentation for TRU waste streams
 - Scheduled to complete CPCCo and CCP project start-up reviews and start certification of waste in September 2026
- EPA will approve Hanford's waste characterization program before shipping to WIPP:
 - Completed Generator Site Technical Review – January 2026
 - New Mexico Environment Department certification audit - July 2026
 - EPA baseline inspection - August 2026
 - Anticipate EPA's compliance determination mid-2027



Characterization/Certification Infrastructure



February 2026

Mobile NDA Equipment



February 2026

High Energy RTR



February 2026

SuperHENC NDA



February 2026

Flame Gas Assay

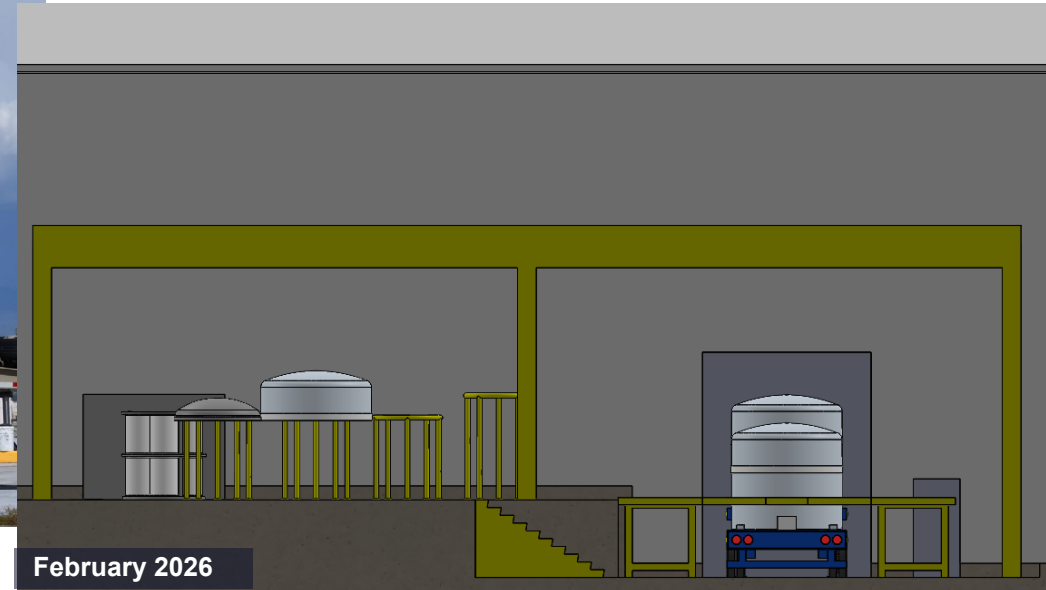
Establish Shipping Capabilities

- Schedule to begin shipments in FY28 (Potentially could start in FY27)



March 2011

Mobile Loading Setup



February 2026

Design and Construct Shipping Structure

CBFO Resuming Shipments

- The Hanford Shipping Corridor has been maintained by the Carlsbad Field Office (CBFO)
 - Continued to provide training for inspection and emergency response for WIPP transportation activities
 - Continued to maintain equipment provided to responders
- Prior to restarting shipment from Hanford, CBFO will:
 - Ensure level of readiness is adequate for inspectors and responders and conduct WIPP transportation exercises
 - Conduct Public Outreach and Education – Road Show, Public Education and Intergovernmental Affairs
- CBFO is planning to begin coordinating these activities with Tribes and States in August 2026



Questions

Questions?

The Hanford Reach
White Bluffs Overlooking the Columbia River

