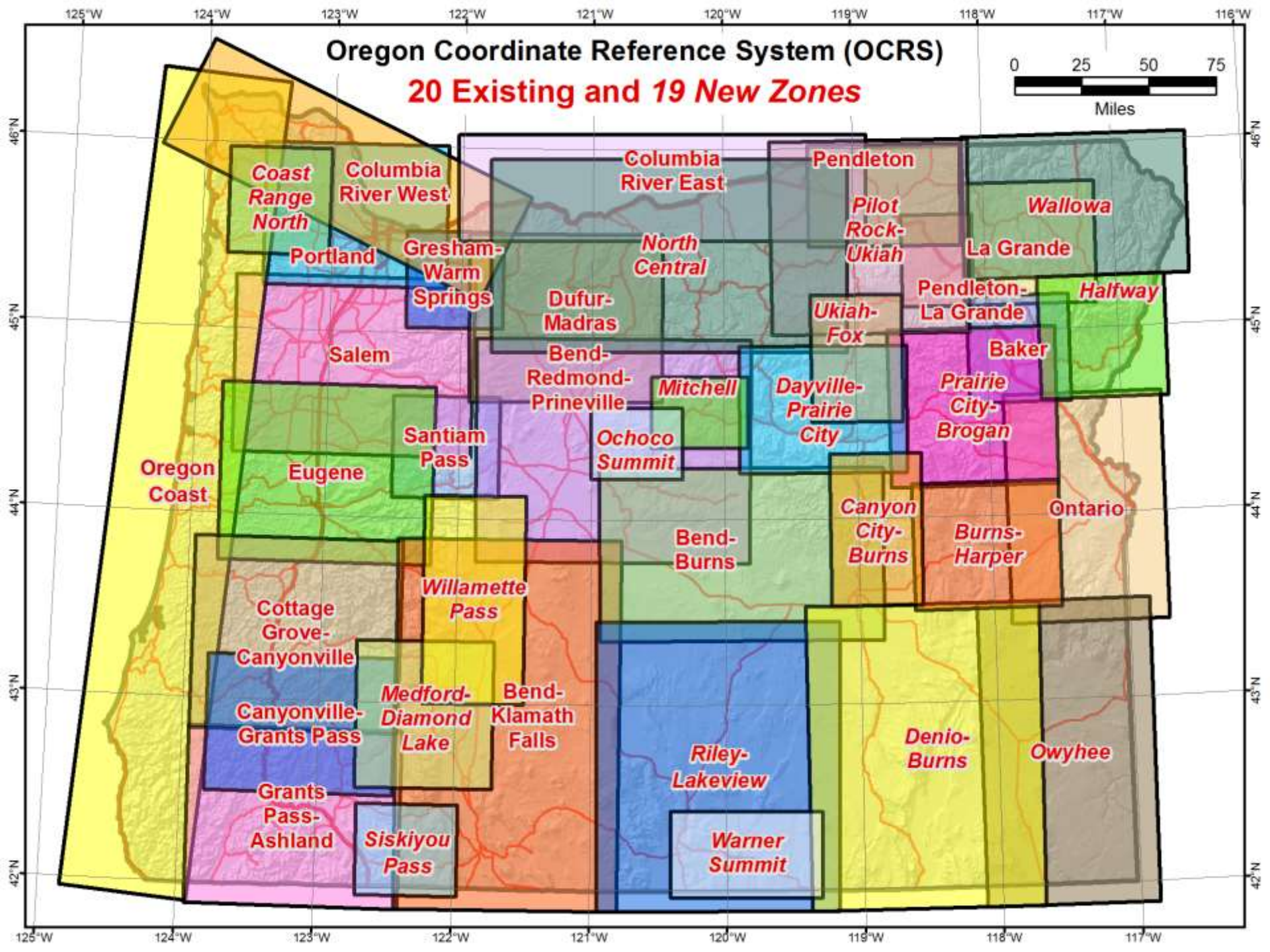
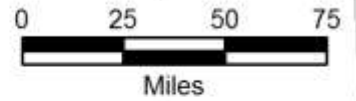
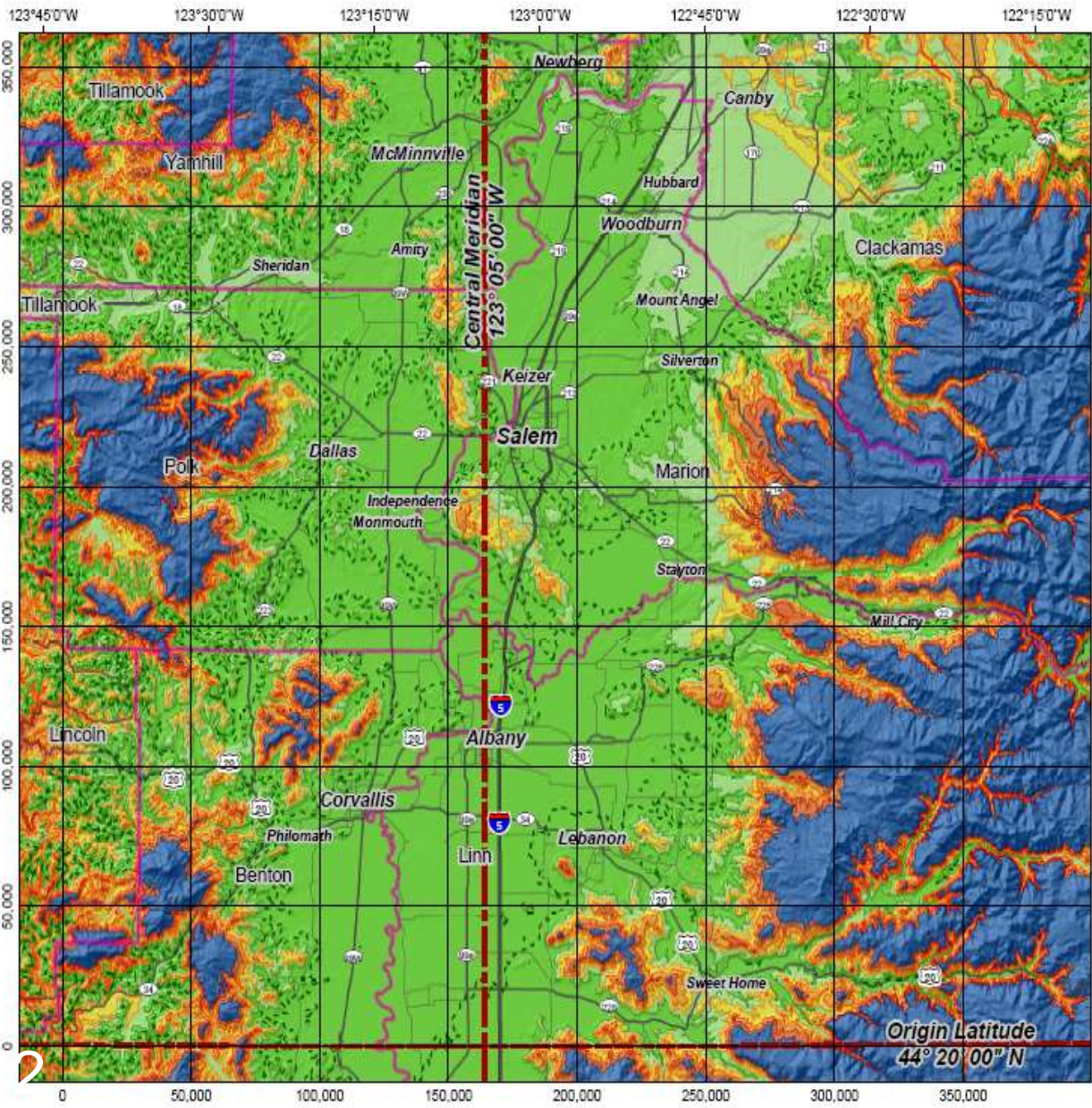


Oregon Coordinate Reference System (OCRS)

20 Existing and 19 New Zones





Oregon Coordinate Reference System Salem Zone

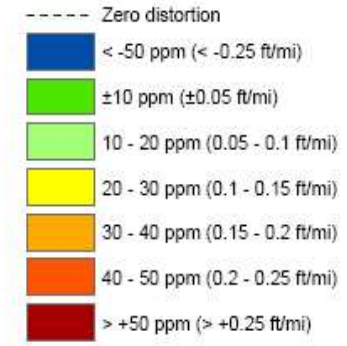
**Transverse Mercator projection
North American Datum of 1983**

Latitude of grid origin: 44° 20' 00" N
 Central meridian: 123° 05' 00" W
 False northing: 0.000 m
 False easting: 50 000.000 m
 Central meridian scale: 1.000 010 (exact)



NOTE: Map grid is shown in units of international feet.

Linear distortion



Prepared by:
 Michael L. Dennis, RLS, PE
 Geodetic Analysis, LLC
 8775 S Cluff Ranch Road
 Pima, AZ 85543
 mld@geodeticanalysis.com



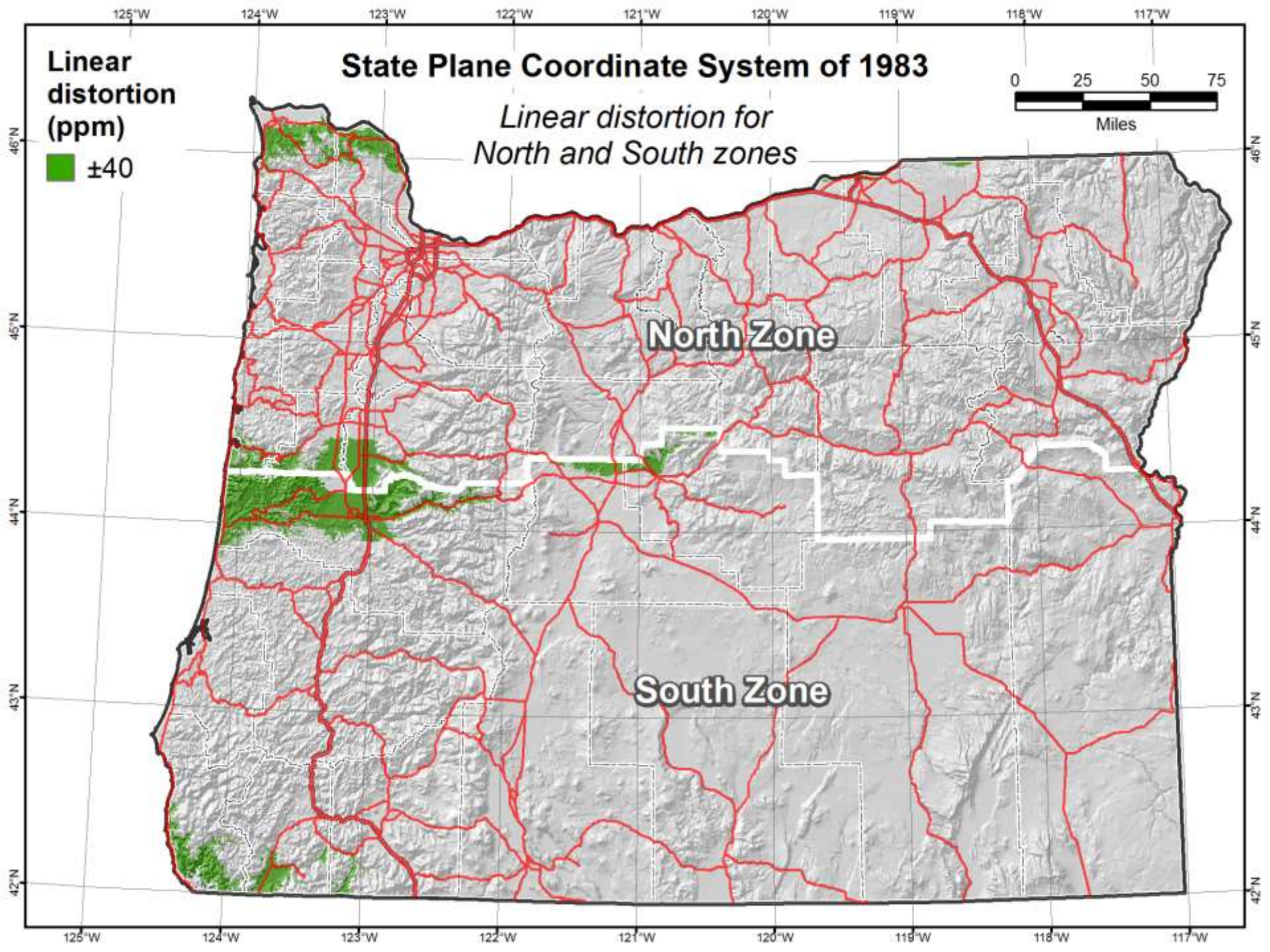
Origin Latitude
44° 20' 00" N

Linear distortion (ppm)

±40

State Plane Coordinate System of 1983

Linear distortion for North and South zones

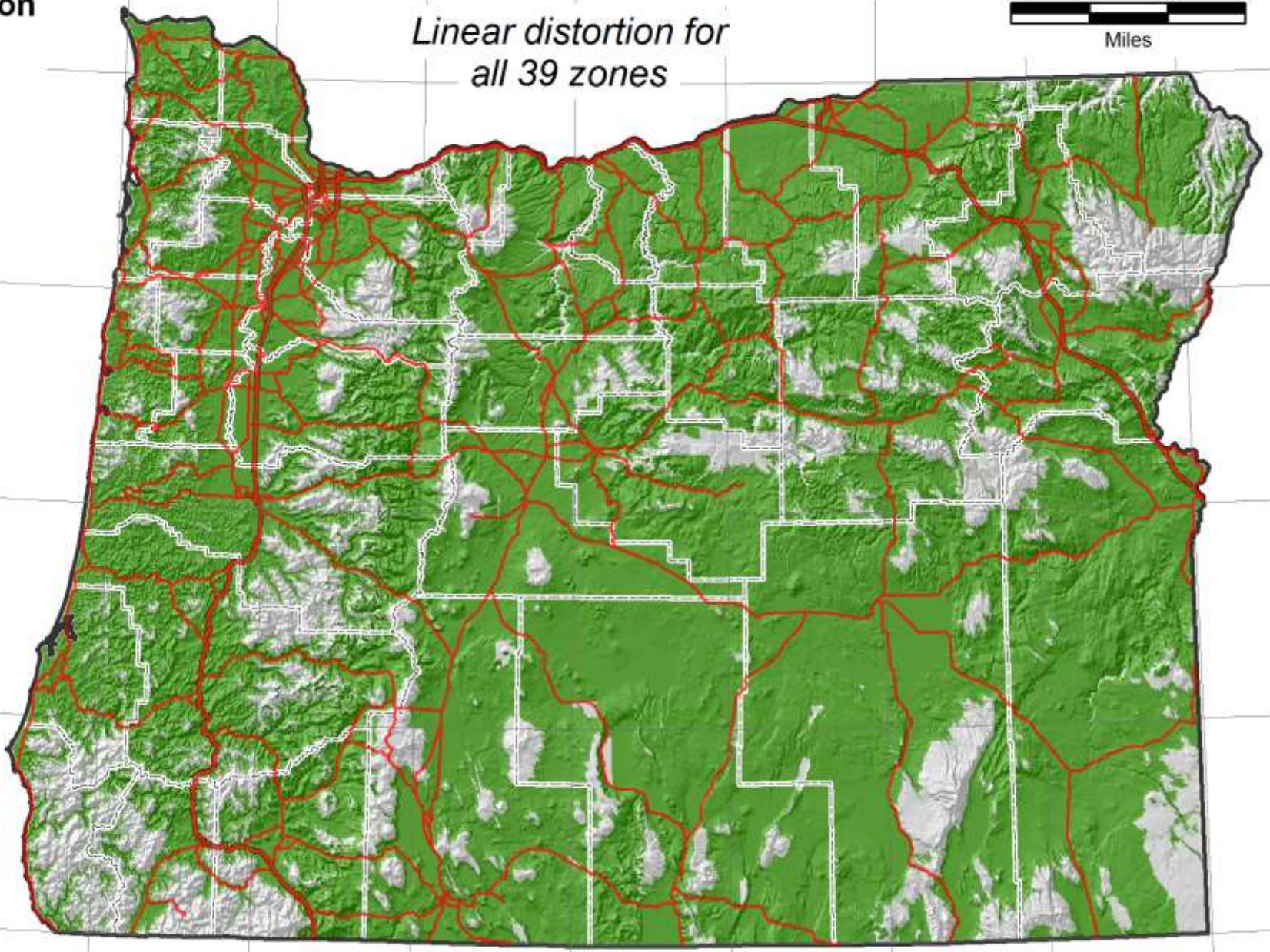
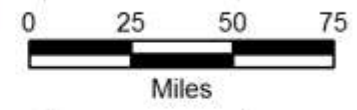


Oregon Coordinate Reference System (OCRS)

*Linear distortion for
all 39 zones*

**Linear
distortion
(ppm)**

 ±40



125°W 124°W 123°W 122°W 121°W 120°W 119°W 118°W 117°W

46°N
45°N
44°N
43°N
42°N

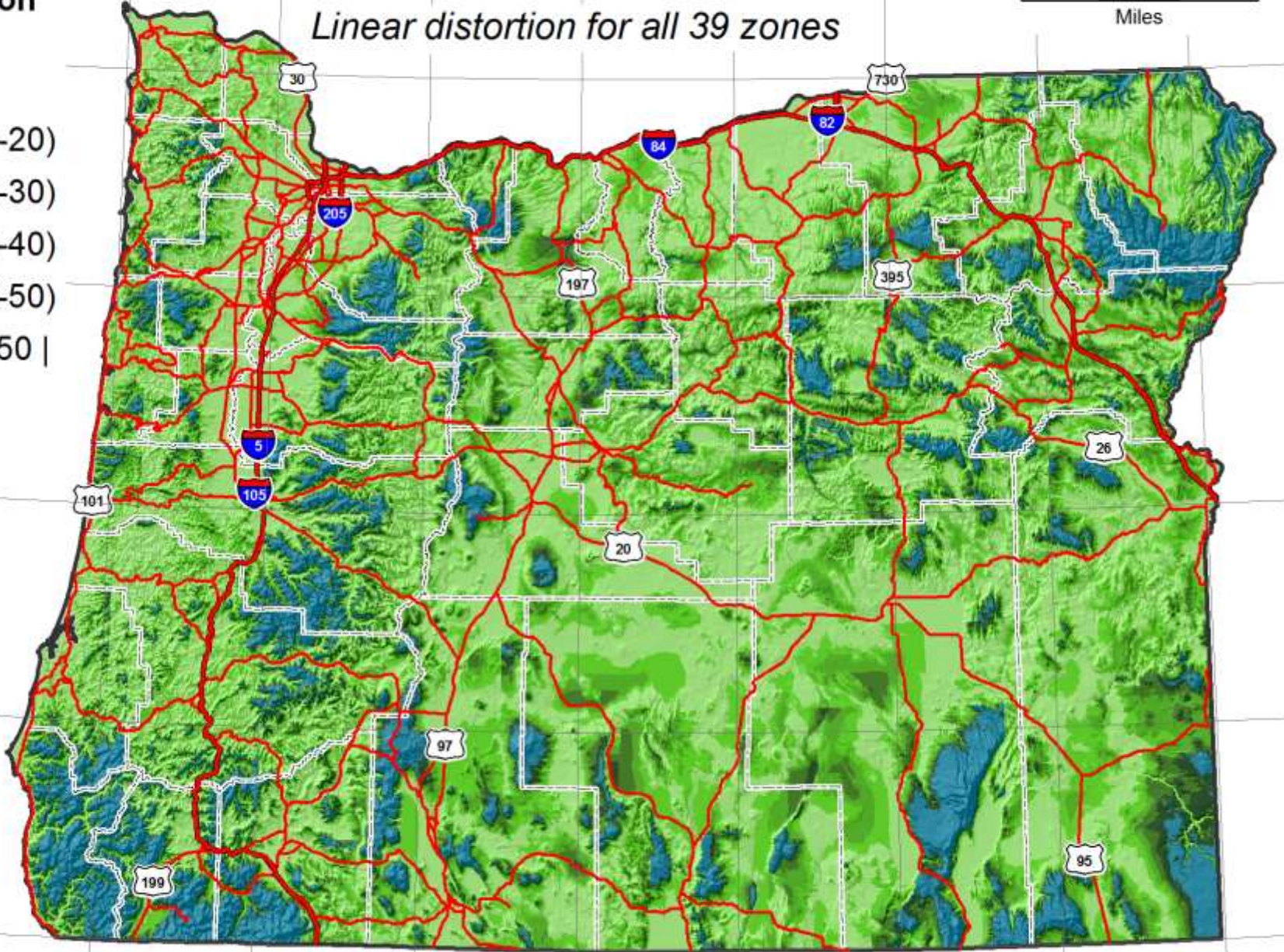
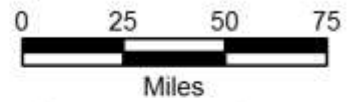
46°N
45°N
44°N
43°N
42°N

Linear distortion (ppm)

- ±10
- ±(10-20)
- ±(20-30)
- ±(30-40)
- ±(40-50)
- > | ±50 |

Oregon Coordinate Reference System (OCRS)

Linear distortion for all 39 zones



125°W 124°W 123°W 122°W 121°W 120°W 119°W 118°W 117°W

46°N
45°N
44°N
43°N
42°N

46°N
45°N
44°N
43°N
42°N